




# **FAST-TRACK**

## PERFORMANCE SEATING



**HOOD SEATING ARE  
PASSIONATE ABOUT  
YOUR HEALTH  
AND WELL-BEING.  
WE BRING YOU OUR  
FAST-TRACK ERGONOMIC  
TASK SEATING RANGE.**



**ALL OUR FAST-TRACK CHAIRS  
ARE BS 5459 ACCREDITED**



**NEXT DAY DELIVERY**

**FAST-TRACK**  
PERFORMANCE  
SEATING





HOOD PHILOSOPHY

**WE HAD A VISION...**  
**TO CREATE SIMPLE-TO-USE**  
**ERGONOMIC CHAIRS**  
**THAT WOULD FIT EVERYBODY,**  
**EVERYWHERE. RESOURCES ARE**  
**PRECIOUS, SO A SUSTAINABLE,**  
**LONG-LIFE DESIGN WAS**  
**ESSENTIAL WHILST OFFERING**  
**AFFORDABILITY FOR ALL.**  
**AT HOOD, WE DELIVER OUR**  
**RANGE OF UNIQUE CHAIRS**  
**QUICKLY TO OUR RESPECTED**  
**DEALER NETWORK WITH**  
**A PERSONAL SERVICE AND**  
**COMMITMENT TO LONG-TERM**  
**RELATIONSHIPS.**



**We all deserve to have our bodies supported correctly. Hood Seating encourages dynamic movement to improve our blood flow so we feel great and are focused to work. Hood delivers healthy, affordable seating for everyone.**

---

Where once ergonomics was about preventing or mitigating harm, it is now about helping people be more healthy, productive and active.

High-end seating manufacturers recognise the importance of muscle movement and engineer chairs to encourage people to shift position whilst seated. This movement stimulates the muscles; increases blood flow, relieves pressure points, and helps with concentration.

The mechanisms that enable this movement are no longer the exclusive domain of expensive chairs and can now be found throughout the Hood range. Healthy seating is no longer the luxury for the few but an affordable solution for everyone.

Comfortable employees typically work better; are happier and reduce the sick days an organisation can suffer. Hygiene, too, is improved by using modern materials such as mesh which offers ventilation and is easy to clean.

Our unique patented chairs have been designed so that every component can be removed and replaced to deliver extreme product longevity. Replacing damaged parts is good for our environment too.

**You can be confident your Hood chair will always deliver at peak performance and outstanding return on investment.**



## **i29'S ERGONOMIC ENGINEERING DELIVERS SUPERB SUPPORT AND DYNAMIC MOVEMENT.**

**The i29's patented floating lumbar/pelvic support system and intuitive controls make it a favourite for people with back pain and trauma. Users from 5'2" to 6'6" get support and dynamic movement from the moment they sit in the i29.**



The i29 boasts one of the most intuitive mechanisms on the market. With three easy-to-use pictorial controls on the right-hand side operating seat height, seat depth and advanced dynamic movement, the back can also be locked at any angle from 90° to 145°. This knee tilt mechanism has the first articulation at the underside of the thighs and the second point under your sitting bones (ischial tuberosities), delivering constant support in active mode and reducing pressure on the underside of the thighs.

The extendable direct tension control adjusts the resistance of the chair to balance users weighing from 8 to 23.5 stone.

Our patented floating lumbar support automatically moves with you when in dynamic mode, giving continuous lumbar support. The chair's split back is designed to deliver independent upper back support as well as ensuring the patented lumbar system protects the lower regions – keeping the user's pelvis rotated.

The back can easily be height adjusted for each user's anthropometric measurements by releasing two buttons on the back of the chair.

The i29 is fitted with an aluminium five-star base as standard. The chair can be also be enhanced with optional features. Two different styles of optional headrests are available and may be retro-fitted – the Executive headrest is ideal for 24/7 use and managerial areas, and the Ergonomic headrest provides more adjustment.

The 4D multi-functional arms incorporate three buttons to adjust the length, width and height. The soft yet durable armpads can also be angled to suit. If customers prefer their chair without arms, they can be removed easily leaving the design uncompromised and safe for users. Another useful option is a coat hanger which can be attached to the back of the chair keeping jackets and coats uncrumpled and safely off the floor.



“ I am pain free  
for the first time  
in years. ”



## FEATURES

The i29 has been designed to continuously support the human body and encourage dynamic movement without compromising style.

i29 provides superb ergonomic support and delivers ultimate comfort to a range of anthropometric body sizes in a wide range of positions, making it the ideal sitting solution for a variety of tasks and environments and for people with back issues.

**10 year warranty.**

## AT A GLANCE

Thoracic Support (upper back & shoulders)

Floating lumbar and pelvic support for lower back comfort

Locking height-adjustable aluminium back

Pictorial buttons – simple and easy to adjust

Direct tension control

Dual-pivot mechanism

Waterfall seat for behind the knee comfort

Fully adjustable 4D arms



---

**WITHOUT HEADREST**  
Shown with mesh seat



---

**WITH ERGONOMIC HEADREST**  
Shown with fabric seat



---

**WITH EXECUTIVE HEADREST**  
Shown with mesh seat

# THE i29'S DUAL SPRING MECH DELIVERS INFINITE TILT-LOCK POSITIONS AND ITS **FLOATING LUMBAR** PROVIDES SUPERB LOWER-BACK SUPPORT.

- A** Optional headrests with height and angle adjustment (can be retro-fitted). Ergonomic headrest shown.
- B** Upper back designed for great thoracic support.
- C** Aluminium height-adjustable backrest locking in three positions.
- D** Floating lumbar and pelvic support for lower back comfort.
- E** Intuitive, pictorial three lever control to activate seat height, seat slide and dynamic movement, allowing users infinite lock positions.
- F** Extendable direct tension control.
- G** Alloy mechanism finishes.
- H** Dual pivot mechanism.
- I** Rounded waterfall seat front. Fabric seat shown.
- J** Multifunctional armrests with soft touch pads.
- K** Aluminium five-star base as standard.





## FAST-TRACK SPEC

We believe passionately in the benefits of using mesh upholstery on our products due to the practical and health benefits which include hygiene, comfort, ventilation, support and durability. Hood fast-track i29 chairs offer black soft weave mesh on both the seat and back, as well as a contoured foam upholstered seat option in black fabric option.



**ERGONOMIC HEADREST**  
Height & tilt adjustment



**EXECUTIVE HEADREST**  
Height adjustment



**MESH SEAT**  
In soft weave mesh



**UPHOLSTERED CUSHION SEAT**  
Fabric upholstery

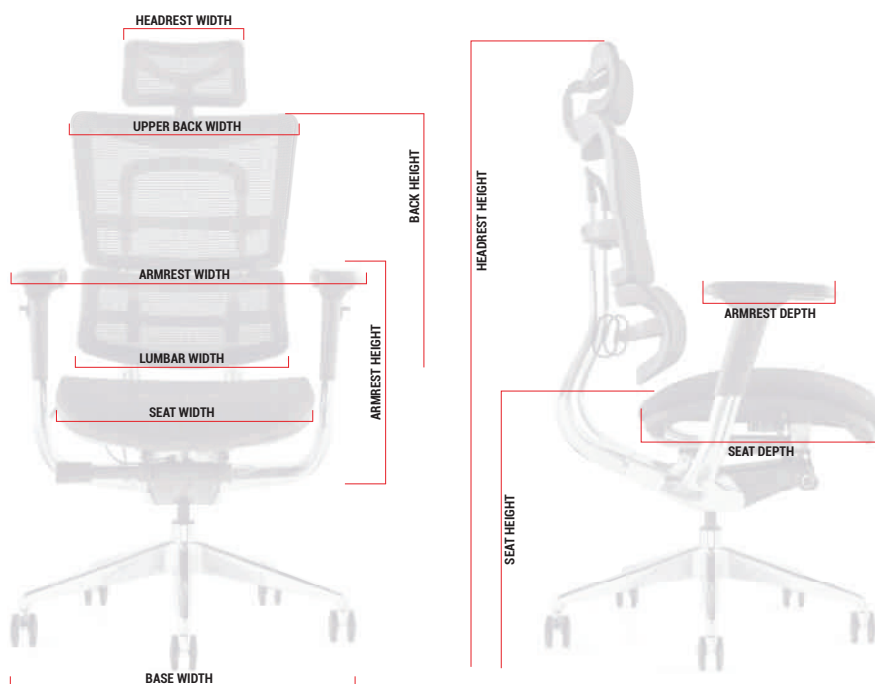


**OPTIONAL COAT HANGER**  
Retro-fittable



**ACCESSORY: MESH FOOT STOOL**  
Height-adjustable

i29 is also available in a range of coloured meshes, leathers and fabrics subject to longer lead times.



## DIMENSIONS

Designed to adjust to most anthropometric measurements

### ERGONOMIC HEADREST DIMENSIONS

WIDTH	270	mm
HEIGHT ADJUSTMENT	90–130	mm
ANGLE	40	°

### EXECUTIVE HEADREST DIMENSIONS

WIDTH	400	mm
HEIGHT	185–220	mm

### BACK DIMENSIONS

UPPER BACK WIDTH	500	mm
LUMBAR WIDTH	440	mm
HEIGHT (5 SETTINGS)	570–620	mm
ANGLE	45	°

### SEAT DIMENSIONS

STANDARD HEIGHT ADJUSTMENT	440–530	mm
OPTIONAL TALL STEM HEIGHT ADJUSTMENT	480–570	mm
WIDTH	490	mm
DEPTH	510–550	mm

### 4D ARMREST DIMENSIONS

WIDTH	460–520	mm
DEPTH	270–320	mm
HEIGHT ADJUSTABLE (6 SETTINGS)	150–230	mm
ANGLE	40	°

### BASE DIMENSIONS

DIAMETER Ø	700	mm
------------	-----	----



## **F94 101 IS THE CHAIR FOR EVERY SCENARIO; FOR EVERY WORKSPACE ENVIRONMENT.**

**Simple and intuitive controls make it easy to adjust with minimal training, helping everyone to actively sit properly.**



The F94's pictorial buttons make it easy to adjust height, seat-slide and tilt. Dynamic movement is essential to encouraging blood flow throughout the body – the direct tension control below the pictorial buttons adjusts to balance the chair for all users weighing 8 to 23.5 stone.

Designed to encourage healthy seated posture, F94's integrated lumbar curvature offers superb lower back support with an extra lumbar panel to adjust perfectly within the 6 ratchet positions. The top of the back offers full thoracic support (upper back and shoulders) which are often neglected.

The F94 is built to last with a polished aluminium base as standard and is upholstered as full mesh or with a fabric seat option.

The F94's arms can be removed easily leaving the design uncompromised and safe for users. Another useful option is a coat hanger which can be attached to the back.

The optional executive headrest offers a larger headrest for comfort and the ergonomic headrest provides additional adjustment and more concentrated support.



“ It supports my lower back really well and has stopped me from slouching too. ”



## FEATURES

Simple and intuitive controls mean it is easy to adjust with minimal training, helping everyone to actively sit properly.  
10 year warranty.

### AT A GLANCE

Thoracic Support (upper back and shoulders)  
Integrated adjustable lumbar panel (removable)  
Ergonomic shaped back on ratchet  
Tension control in Dynamic Mode  
Waterfall seat for behind the knee comfort  
3D adjustable arms  
Adjustable headrests  
Pictorial buttons – simple and easy to adjust



---

**WITHOUT HEADREST**  
Shown with mesh seat

---

**WITH ERGONOMIC HEADREST**  
Shown with fabric seat

---

**WITH EXECUTIVE HEADREST**  
Shown with mesh seat

# WITH SEAT SLIDE FUNCTIONALITY AND INTUITIVE CONTROLS, THE F94 101 OFFERS AN **ENHANCED TASK SEATING EXPERIENCE.**

- A** Optional headrests with height and angle adjustment (can be retro-fitted).
- B** Upper back designed for great thoracic support.
- C** Height adjustable (5 settings) backrest.
- D** Integrated lumbar supporting lower back. Removable height-adjustable Lumbar Panel.
- E** Robust soft-weave mesh upholstery for ventilation and pressure distributions.
- F** Intuitive, pictorial three lever control to activate seat height, seat slide and dynamic movement.
- G** Extendable direct tension control.
- H** Synchronised mechanism at 2:1 ratio.
- I** Rounded waterfall seat front.
- J** 3D Multifunctional (height, depth, angle) arm rests with soft touch pads. Width can be set during build. (Arms can be removed).
- K** Aluminium five-star base as standard.



# F94

## FAST-TRACK SPEC

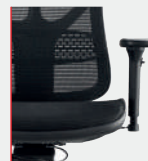
We believe passionately in the benefits of using mesh upholstery on our products due to the practical and health benefits which include hygiene, comfort, ventilation, support and durability. Hood fast-track F94 101 chairs offer black soft weave mesh on both the seat and back, as well as a contoured foam upholstered seat option in black fabric.



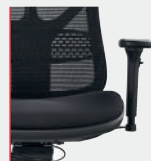
**ERGONOMIC HEADREST**  
Height & tilt adjustment



**EXECUTIVE HEADREST**  
Height adjustment



**MESH SEAT**  
In soft weave mesh



**UPHOLSTERED CUSHION SEAT**  
Fabric upholstery

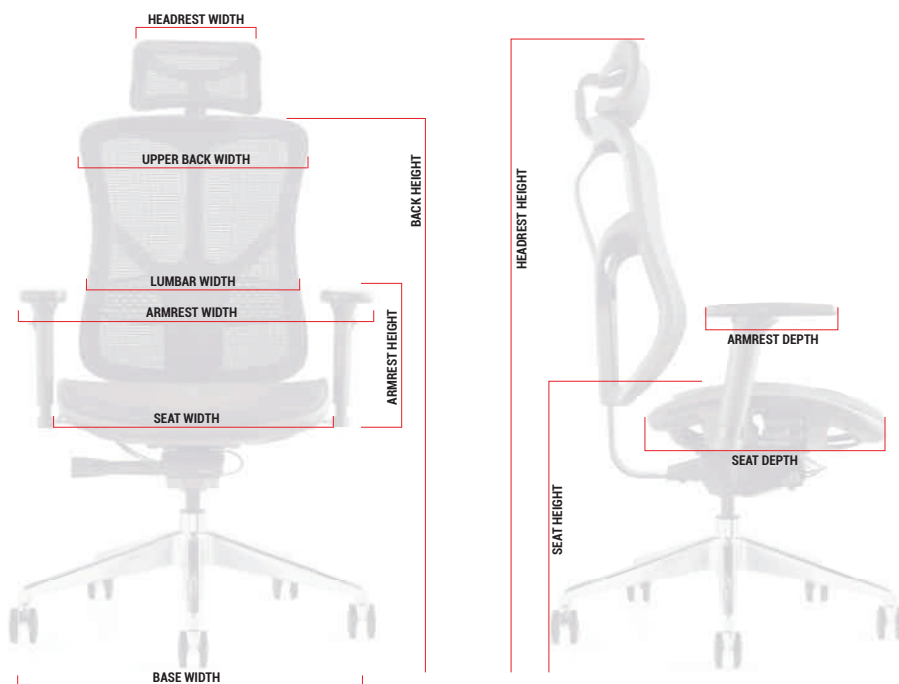


**OPTIONAL COAT HANGER**  
Retro-fittable



**ACCESSORY: MESH FOOT STOOL**  
Height-adjustable

F94 is also available in a range of coloured meshes, leathers and fabrics subject to longer lead times.



## DIMENSIONS

Designed to adjust to most anthropometric measurements

### ERGONOMIC HEADREST DIMENSIONS

WIDTH	270	mm
HEIGHT ADJUSTMENT	90-130	mm
ANGLE	40	°

### EXECUTIVE HEADREST DIMENSIONS

WIDTH	400	mm
HEIGHT	185-220	mm

### BACK DIMENSIONS

UPPER BACK WIDTH	500	mm
LUMBAR WIDTH	440	mm
HEIGHT (5 SETTINGS)	570-620	mm
ANGLE	45	°

### SEAT DIMENSIONS

STANDARD HEIGHT ADJUSTMENT	440-530	mm
OPTIONAL TALL STEM HEIGHT ADJUSTMENT	480-570	mm
WIDTH	500	mm
DEPTH	490-560	mm

### 3D ARMREST DIMENSIONS

WIDTH	270-320	mm
DEPTH	250-300	mm
HEIGHT ADJUSTABLE (6 SETTINGS)	190-240	mm
ANGLE	40	°

### BASE DIMENSIONS

DIAMETER Ø	700	mm
------------	-----	----



## THE C19 IS THE ULTIMATE CONTRACT CHAIR.

**This exceptionally comfortable, great value contract chair features ergonomic design and adjustment without compromising on style.  
5 year warranty.**



We asked our dealers 'what is missing in the Hood portfolio?' – the feedback was that our seating collection needed a quality, value-for money, stylish contract chair. We paid attention and developed a new product to meet this criteria.

The C19 task chair is the result of this development process.

Drawing from our experience and knowledge of the marketplace and from the leading features of our other products, we have created a chair that delivers on comfort, design, ease of use and ergonomics. We have achieved this while hitting a target price point that make it incredibly competitive in the marketplace.

The C19 task chair comes with a mesh tall back and upholstered seat pad as standard. With its clean aesthetics and easy-to-use design, the C19 offers intuitive ergonomic functionality alongside fantastic value and comfort for a wide range of user heights. The C19 boasts an intuitive mechanism with two easy-to-use pictorial controls on the right-hand side to operate seat height and dynamic movement. The C19's buttons make it easy to adjust seat height and tilt. Dynamic movement is essential to encourage blood flow throughout the body – the direct tension control below the seat adjusts to balance the chair for users between 8 and 23.5 stone.

Designed to encourage healthy posture, the C19's lumbar panel adjusts easily to offer great lumbar support. The C19's 3-dimensional arms with soft-touch pads can be removed easily leaving the design uncompromised and safe for users.

The C19 is built to last with interchangeable parts. We can also offer a mesh seat option and 56 different textile option, subject to lead times, enabling each customer to specify the chair to suit their requirements and style.



“ **Staggeringly comfortable for such a simple chair.** ”

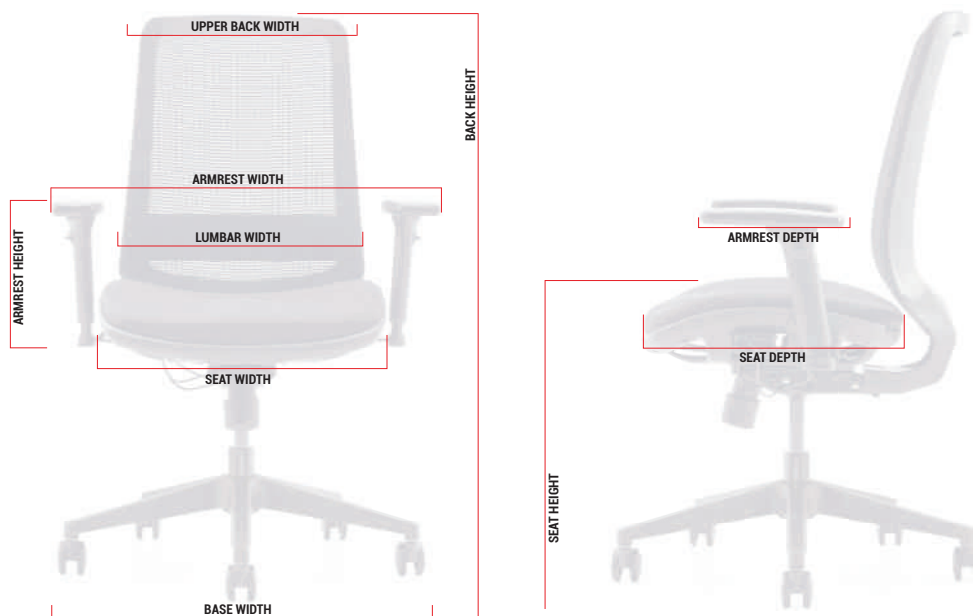
# C19

## FAST-TRACK SPEC

The Fast-track C19 comes with a soft weave black mesh back and contoured foam seat in black fabric for comfort, ventilation, support and durability.



C19 is also available in a range of coloured meshes, leathers and fabrics subject to longer lead times.



## DIMENSIONS

Designed to adjust to most anthropometric measurements

### BACK DIMENSIONS

UPPER BACK WIDTH	400	mm
LUMBAR WIDTH	460	mm
LUMBAR HEIGHT	90-160	mm
HEIGHT	560	mm
ANGLE	45	°

### SEAT DIMENSIONS

STANDARD HEIGHT ADJUSTMENT	440-530	mm
OPTIONAL TALL STEM HEIGHT ADJUSTMENT	480-570	mm
WIDTH	510	mm
DEPTH	490	mm

### 3D ARMREST DIMENSIONS

WIDTH	270-320	mm
DEPTH	250-300	mm
HEIGHT ADJUSTABLE (6 SETTINGS)	190-240	mm
ANGLE	40	°

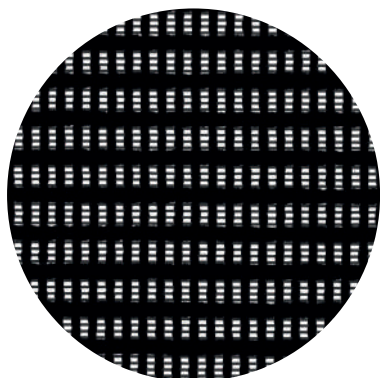
### BASE DIMENSIONS

DIAMETER Ø	700	mm
------------	-----	----

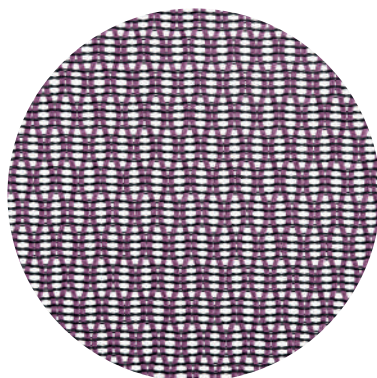
# TEXTILES

Hood Seating hold the i29, F94 and C19 chairs in stock in soft weave black mesh\* and black fabric\*\* to allow us to meet our next-day delivery pledge.

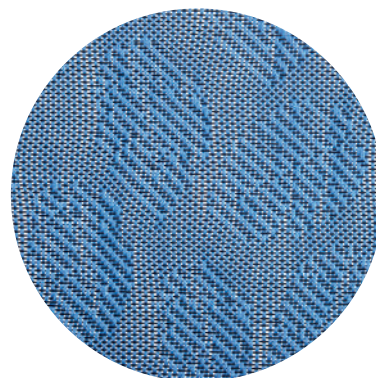
We also offer our ranges in a selection of durable and contemporary textiles from patterned meshes to luxurious leather and soft fabric subject to longer lead times.



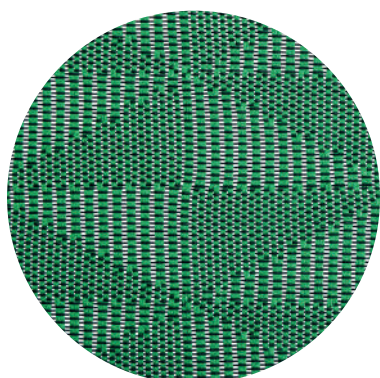
SOFT WEAVE MESH\*



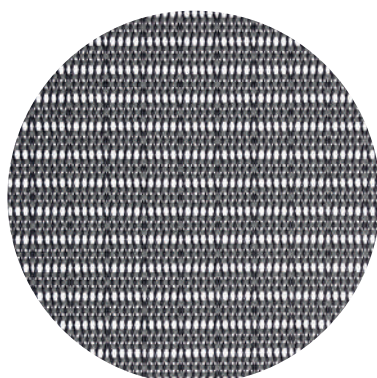
DIAMOND MESH



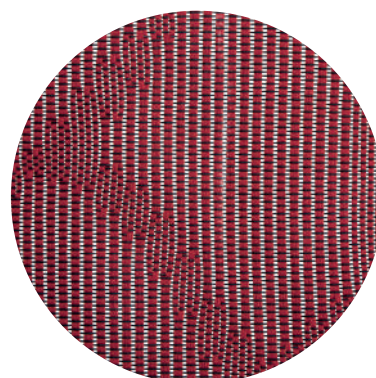
LEAF MESH



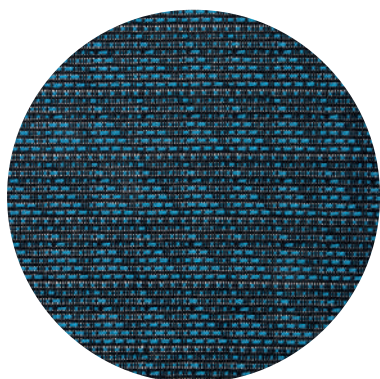
KITE MESH



STRIPE MESH



JUNGLE MESH



TRIANGLE MESH

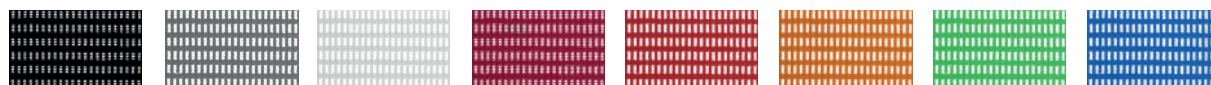


LEATHER



FABRIC\*\*

## SOFT WEAVE MESH



**BLACK\***  
W21

TAUPE  
W20

WHITE  
W26

WINE  
W27

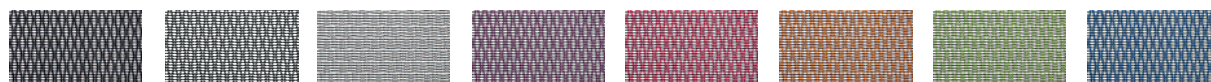
VIVID RED  
W22

ORANGE  
W23

PARAKEET  
W24

ROYAL BLUE  
W25

## DIAMOND MESH



BLACK  
W11

STEEL GREY  
W10

WHITE  
W17

MAUVE  
W16

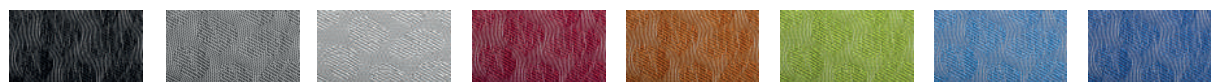
RED  
W12

COPPER  
W13

LIME  
W14

DENIM BLUE  
W15

## LEAF MESH



BLACK  
W61

STEEL GREY  
W60

WHITE  
W67

RED  
W62

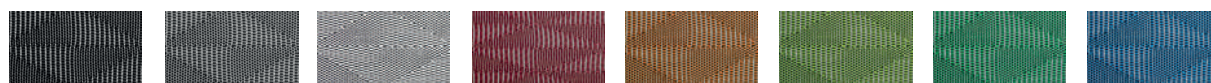
ORANGE  
W63

PEAR  
W64

SKY BLUE  
W65

BLUE  
W65-1

## KITE MESH



BLACK  
W51

STEEL GREY  
W50

WHITE  
W57

RED  
W52

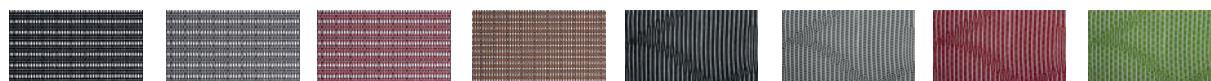
COPPER  
W53

LIME  
W54

EMERALD  
W54-1

AQUA BLUE  
W55

## STRIPE MESH



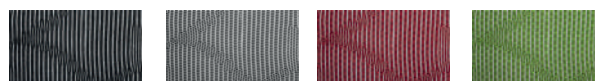
BLACK  
W31

STEEL GREY  
W30

RED  
W32

BRONZE  
W33

## JUNGLE MESH



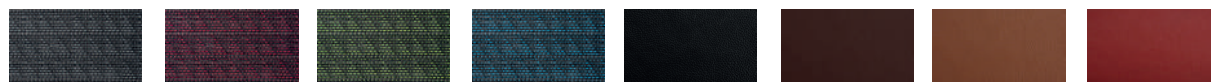
BLACK  
W71

STEEL GREY  
W70

RED  
W72

GREEN  
W74

## TRIANGLE MESH



STEEL GREY  
W80

RED  
W82

GREEN  
W84

AQUA BLUE  
W85

## LEATHER



BLACK  
P02

DARK BROWN  
P01

TAN  
P04

VIVID RED  
P03

## FABRIC



**BLACK\*\***  
B41

GREY  
B40

LIGHT GREY  
B47

WINE  
B46

VIVID RED  
B42

BURNT ORANGE  
W43

PALE LIME  
W44

BLUE  
W45

Colours may not be exact due to print processes. Please speak to your Hood Seating representative for upholstery samples.  
For matching colour options, select matching fabric names (example: W27 Wine and B46 Wine).



**SHOWROOM:**

The Vault,  
8-11 St Johns Lane,  
London,  
EC1M 4BF

**HEAD OFFICE:**

The Smart Centre,  
Tenth Avenue,  
Zone 3 Deeside Industrial Park,  
Flintshire, CH5 2UA

**T: 0333 123 2000**  
**E: [SALES@HOODSEATING.COM](mailto:SALES@HOODSEATING.COM)**