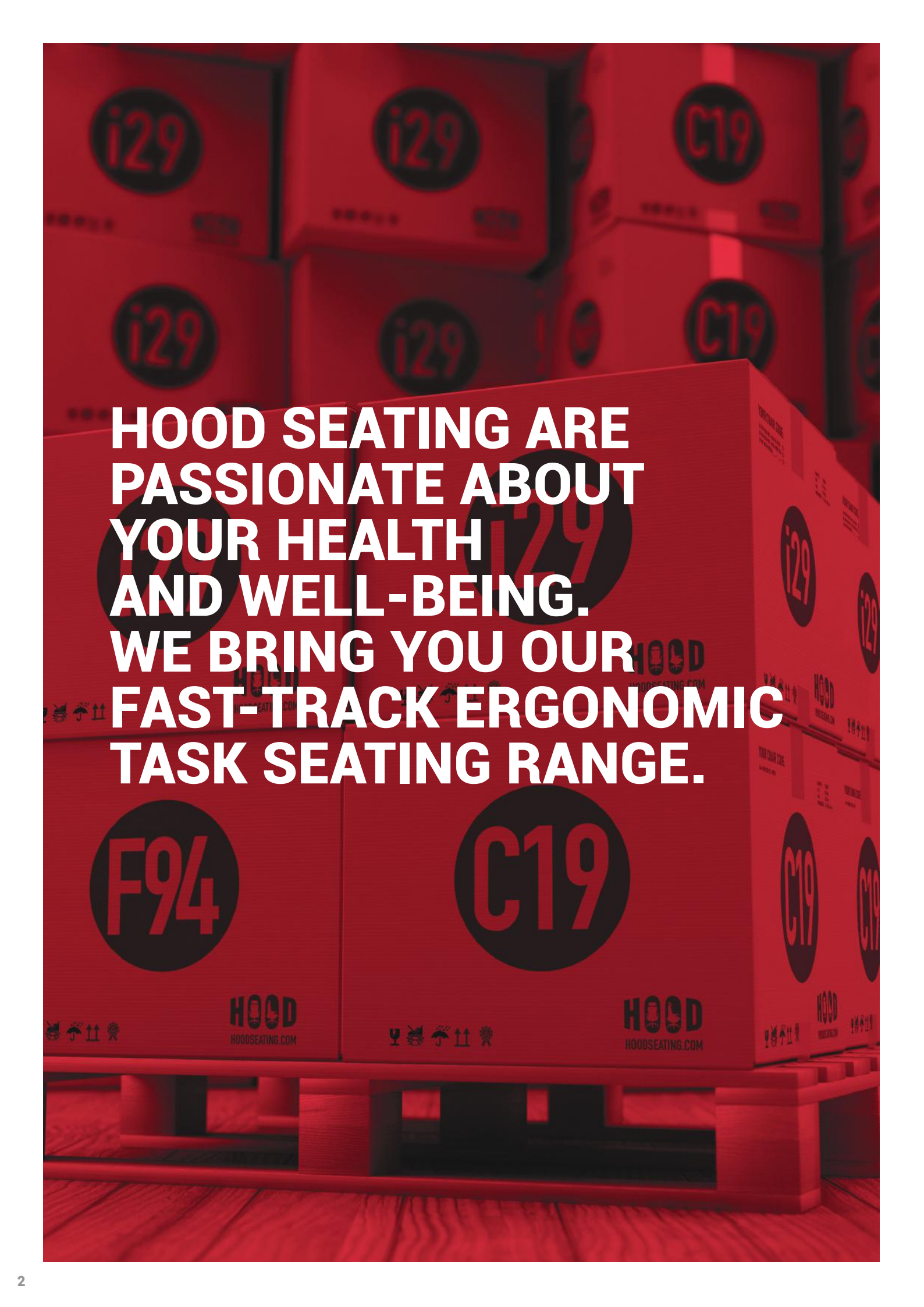


HOOD
HOOD SEATING



NEXT DAY DELIVERY

FAST-TRACK PERFORMANCE SEATING



**HOOD SEATING ARE
PASSIONATE ABOUT
YOUR HEALTH
AND WELL-BEING.
WE BRING YOU OUR
FAST-TRACK ERGONOMIC
TASK SEATING RANGE.**



**ALL OUR FAST-TRACK CHAIRS
ARE BS 5459 ACCREDITED**



NEXT DAY DELIVERY

FAST-TRACK
PERFORMANCE
SEATING

i29


F94

C19



HOOD PHILOSOPHY

**WE HAD A VISION...
TO CREATE SIMPLE-TO-USE
ERGONOMIC CHAIRS
THAT WOULD FIT EVERYBODY,
EVERYWHERE. RESOURCES ARE
PRECIOUS, SO A SUSTAINABLE,
LONG-LIFE DESIGN WAS
ESSENTIAL WHILST OFFERING
AFFORDABILITY FOR ALL.
AT HOOD, WE DELIVER OUR
RANGE OF UNIQUE CHAIRS
QUICKLY TO OUR RESPECTED
DEALER NETWORK WITH A
PERSONAL SERVICE AND
COMMITMENT TO LONG-TERM
RELATIONSHIPS.**



We all deserve to have our bodies supported correctly. Hood Seating encourages dynamic movement to improve our blood flow so we feel great and are focused to work. Hood delivers healthy, affordable seating for everyone.

Where once ergonomics was about preventing or mitigating harm, it is now about helping people be more healthy, productive and active.

High-end seating manufacturers recognise the importance of muscle movement and engineer chairs to encourage people to shift position whilst seated. This movement stimulates the muscles; increases blood flow, relieves pressure points, and helps with concentration.

The mechanisms that enable this movement are no longer the exclusive domain of expensive chairs and can now be found throughout the Hood range. Healthy seating is no longer the luxury for the few but an affordable solution for everyone.

Comfortable employees typically work better; are happier and reduce the sick days an organisation can suffer. Hygiene, too, is improved by using modern materials such as mesh which offers ventilation and is easy to clean.

Our unique patented chairs have been designed so that every component can be removed and replaced to deliver extreme product longevity. Replacing damaged parts is good for our environment too.

You can be confident your Hood chair will always deliver at peak performance and outstanding return on investment.



i29'S ERGONOMIC ENGINEERING DELIVERS SUPERB SUPPORT AND DYNAMIC MOVEMENT.

The i29's patented floating lumbar/pelvic support system and intuitive controls make it a favourite for people with back pain and trauma. Users from 5'2" to 6'6" get support and dynamic movement from the moment they sit in the i29.



The i29 boasts one of the most intuitive mechanisms on the market. With three easy-to use pictorial controls on the right-hand side operating seat height, seat depth and advanced dynamic movement, the back can also be locked at any angle from 90° to 145°. This knee tilt mechanism has the first articulation at the underside of the thighs and the second point under your sitting bones (ischial tuberosities), delivering constant support in active mode and reducing pressure on the underside of the thighs.

The extendable direct tension control adjusts the resistance of the chair to balance users weighing from 8 to 23.5 stone.

Our patented floating lumbar support automatically moves with you when in dynamic mode, giving continuous lumbar support. The chair's split back is designed to deliver independent upper back support as well as ensuring the patented lumbar system protects the lower regions – keeping the user's pelvis rotated.

The back can easily be height adjusted for each user's anthropometric measurements by releasing two buttons on the back of the chair.

The i29 is fitted with an aluminium five-star base as standard. The chair can be also be enhanced with optional features. Two different styles of optional headrests are available and may be retro-fitted – the Executive headrest is ideal for 24/7 use and managerial areas, and the Ergonomic headrest provides more adjustment.

The 4D multi-functional arms incorporate three buttons to adjust the length, width and height. The soft yet durable armpads can also be angled to suit. If customers prefer their chair without arms, they can be removed easily leaving the design uncompromised and safe for users. Another useful option is a coat hanger which can be attached to the back of the chair keeping jackets and coats uncrumpled and safely off the floor.

BS
5459
-2:2000
+A2:2008



“ I am pain free
for the first time
in years. ”



FEATURES

The i29 has been designed to continuously support the human body and encourage dynamic movement without compromising style.

i29 provides superb ergonomic support and delivers ultimate comfort to a range of anthropometric body sizes in a wide range of positions, making it the ideal sitting solution for a variety of tasks and environments and for people with back issues.

10 year warranty.

AT A GLANCE

Thoracic Support (upper back & shoulders)

Floating lumbar and pelvic support for lower back comfort

Locking height-adjustable aluminium back

Pictorial buttons – simple and easy to adjust

Direct tension control

Dual-pivot mechanism

Waterfall seat for behind the knee comfort

Fully adjustable 4D arms



WITHOUT HEADREST
Shown with mesh seat



WITH ERGONOMIC HEADREST
Shown with fabric seat



WITH EXECUTIVE HEADREST
Shown with mesh seat

THE i29'S DUAL SPRING MECH DELIVERS INFINITE TILT-LOCK POSITIONS AND ITS FLOATING LUMBAR PROVIDES SUPERB LOWER-BACK SUPPORT.

- A** Optional headrests with height and angle adjustment (can be retro-fitted). Ergonomic headrest shown.
- B** Upper back designed for great thoracic support.
- C** Aluminium height-adjustable backrest locking in three positions.
- D** Floating lumbar and pelvic support for lower back comfort.
- E** Intuitive, pictorial three lever control to activate seat height, seat slide and dynamic movement, allowing users infinite lock positions.

- F** Extendable direct tension control.
- G** Alloy mechanism finishes.
- H** Dual pivot mechanism.
- I** Rounded waterfall seat front. Fabric seat shown.
- J** Multifunctional armrests with soft touch pads.
- K** Aluminium five-star base as standard.



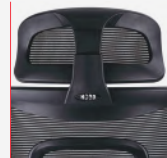


FAST-TRACK SPEC

We believe passionately in the benefits of using mesh upholstery on our products due to the practical and health benefits which include hygiene, comfort, ventilation, support and durability. Hood fast-track i29 chairs offer black soft weave mesh on both the seat and back, as well as a contoured foam upholstered seat option in black fabric option.



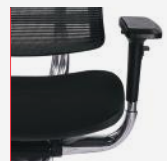
ERGONOMIC HEADREST
Height & tilt adjustment



EXECUTIVE HEADREST
Height adjustment



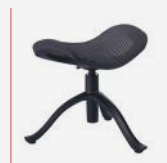
MESH SEAT
In soft weave mesh



UPHOLSTERED CUSHION SEAT
Fabric upholstery

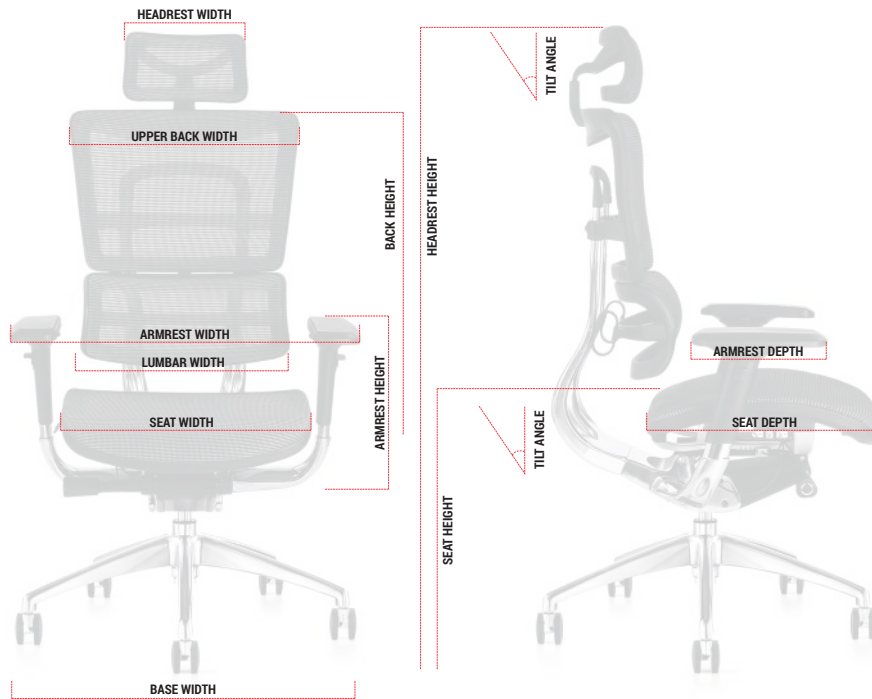


OPTIONAL COAT HANGER
Retro-fittable



ACCESSORY: MESH FOOT STOOL
Height-adjustable

i29 is also available in a range of coloured meshes, leathers and fabrics subject to longer lead times.



DIMENSIONS

Designed to adjust to most anthropometric measurements

ERGONOMIC HEADREST DIMENSIONS

WIDTH	270	mm
HEIGHT ADJUSTMENT	90–130	mm
ANGLE	40	°

EXECUTIVE HEADREST DIMENSIONS

WIDTH	400	mm
HEIGHT	185–220	mm

BACK DIMENSIONS

UPPER BACK WIDTH	500	mm
LUMBAR WIDTH	440	mm
HEIGHT (5 SETTINGS)	570–620	mm
ANGLE	45	°

SEAT DIMENSIONS

STANDARD HEIGHT ADJUSTMENT	440–530	mm
OPTIONAL TALL STEM HEIGHT ADJUSTMENT	480–570	mm
WIDTH	490	mm
DEPTH	510–550	mm

4D ARMREST DIMENSIONS

WIDTH	460–520	mm
DEPTH	270–320	mm
HEIGHT ADJUSTABLE (6 SETTINGS)	150–230	mm
ANGLE	40	°

BASE DIMENSIONS

DIAMETER Ø	700	mm
------------	-----	----

F94

F94 101 IS THE CHAIR FOR EVERY SCENARIO; FOR EVERY WORKSPACE ENVIRONMENT.

Simple and intuitive controls make it easy to adjust with minimal training, helping everyone to actively sit properly.



The F94's pictorial buttons make it easy to adjust height, seat-slide and tilt. Dynamic movement is essential to encouraging blood flow throughout the body – the direct tension control below the pictorial buttons adjusts to balance the chair for all users weighing 8 to 23.5 stone.

Designed to encourage healthy seated posture, F94's integrated lumbar curvature offers superb lower back support with an extra lumbar panel to adjust perfectly within the 6 ratchet positions. The top of the back offers full thoracic support (upper back and shoulders) which are often neglected.

The F94 is built to last with a polished aluminium base as standard and is upholstered as full mesh or with a fabric seat option.

The F94's arms can be removed easily leaving the design uncompromised and safe for users. Another useful option is a coat hanger which can be attached to the back.

The optional executive headrest offers a larger headrest for comfort and the ergonomic headrest provides additional adjustment and more concentrated support.

BS
5459
-2:2000
+A2:2008



“ It supports my lower back really well and has stopped me from slouching too. ”



FEATURES

Simple and intuitive controls mean it is easy to adjust with minimal training, helping everyone to actively sit properly.

10 year warranty.

AT A GLANCE

- Thoracic Support (upper back and shoulders)
- Integrated adjustable lumbar panel (removable)
- Ergonomic shaped back on ratchet
- Tension control in Dynamic Mode
- Waterfall seat for behind the knee comfort
- 3D adjustable arms
- Adjustable headrests
- Pictorial buttons – simple and easy to adjust



WITHOUT HEADREST
Shown with mesh seat



WITH ERGONOMIC HEADREST
Shown with fabric seat



WITH EXECUTIVE HEADREST
Shown with mesh seat

WITH SEAT SLIDE FUNCTIONALITY AND INTUITIVE CONTROLS, THE F94 101 OFFERS AN ENHANCED TASK SEATING EXPERIENCE.

- A** Optional headrests with height and angle adjustment (can be retro-fitted).
- B** Upper back designed for great thoracic support.
- C** Height adjustable (5 settings) backrest.
- D** Integrated lumbar supporting lower back. Removable height-adjustable Lumbar Panel.
- E** Robust soft-weave mesh upholstery for ventilation and pressure distribution.
- F** Intuitive, pictorial three lever control to activate seat height, seat slide and dynamic movement.
- G** Extendable direct tension control.
- H** Synchronised mechanism at 2:1 ratio.
- I** Rounded waterfall seat front.
- J** 3D Multifunctional (height, depth, angle) arm rests with soft touch pads. Width can be set during build. (Arms can be removed).
- K** Aluminium five-star base as standard.



F94

FAST-TRACK SPEC

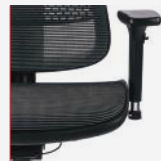
We believe passionately in the benefits of using mesh upholstery on our products due to the practical and health benefits which include hygiene, comfort, ventilation, support and durability. Hood fast-track F94 101 chairs offer black soft weave mesh on both the seat and back, as well as a contoured foam upholstered seat option in black fabric.



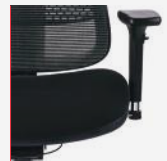
ERGONOMIC HEADREST
Height & tilt adjustment



EXECUTIVE HEADREST
Height adjustment



MESH SEAT
In soft weave mesh



UPHOLSTERED CUSHION SEAT
Fabric upholstery

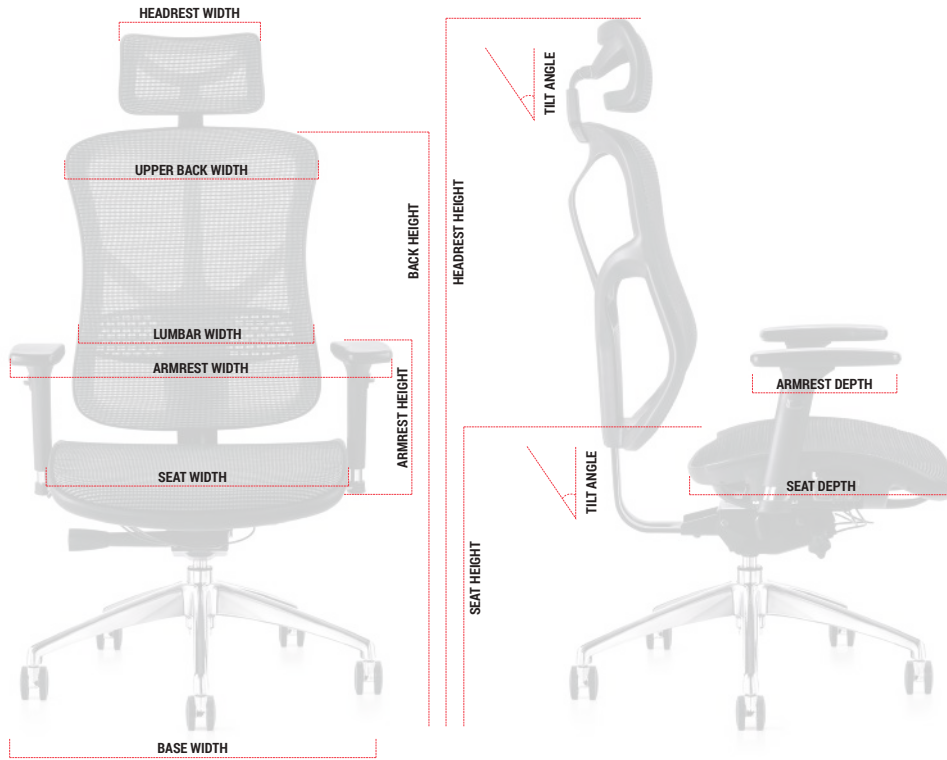


OPTIONAL COAT HANGER
Retro-fittable



ACCESSORY: MESH FOOT STOOL
Height-adjustable

F94 is also available in a range of coloured meshes, leathers and fabrics subject to longer lead times.



DIMENSIONS

Designed to adjust to most anthropometric measurements

ERGONOMIC HEADREST DIMENSIONS

WIDTH	270	mm
HEIGHT ADJUSTMENT	90–130	mm
ANGLE	40	°

EXECUTIVE HEADREST DIMENSIONS

WIDTH	400	mm
HEIGHT	185–220	mm

BACK DIMENSIONS

UPPER BACK WIDTH	500	mm
LUMBAR WIDTH	440	mm
HEIGHT (5 SETTINGS)	590–660	mm
ANGLE	45	°

SEAT DIMENSIONS

STANDARD HEIGHT ADJUSTMENT	440–530	mm
OPTIONAL TALL STEM HEIGHT ADJUSTMENT	480–570	mm
WIDTH	500	mm
DEPTH	490–560	mm

3D ARMREST DIMENSIONS

WIDTH	270–320	mm
DEPTH	250–300	mm
HEIGHT ADJUSTABLE (6 SETTINGS)	190–240	mm
ANGLE	40	°

BASE DIMENSIONS

DIAMETER Ø	700	mm
------------	-----	----



THE C19 IS THE ULTIMATE CONTRACT CHAIR.

This exceptionally comfortable, great value contract chair features ergonomic design and adjustment without compromising on style.

5 year warranty.



We asked our dealers 'what is missing in the Hood portfolio?' – the feedback was that our seating collection needed a quality, value-for money, stylish contract chair. We paid attention and developed a new product to meet this criteria.

The C19 task chair is the result of this development process.

Drawing from our experience and knowledge of the marketplace and from the leading features of our other products, we have created a chair that delivers on comfort, design, ease of use and ergonomics. We have achieved this while hitting a target price point that make it incredibly competitive in the marketplace.

The C19 task chair comes with a mesh tall back and upholstered seat pad as standard. With its clean aesthetics and easy-to-use design, the C19 offers intuitive ergonomic functionality alongside fantastic value and comfort for a wide range of user heights.

The C19 boasts an intuitive mechanism with two easy-to-use pictorial controls on the right-hand side to operate seat height and dynamic movement. The C19's buttons make it easy to adjust seat height and tilt. Dynamic movement is essential to encourage blood flow throughout the body – the direct tension control below the seat adjusts to balance the chair for users between 8 and 23.5 stone.

Designed to encourage healthy posture, the C19's lumbar panel adjusts easily to offer great lumbar support. The C19's 3-dimensional arms with soft-touch pads can be removed easily leaving the design uncompromised and safe for users.

The C19 is built to last with interchangeable parts. We can also offer a mesh seat option and 56 different textile option, subject to lead times, enabling each customer to specify the chair to suit their requirements and style.



“ Staggeringly comfortable for such a simple chair. ”

C19

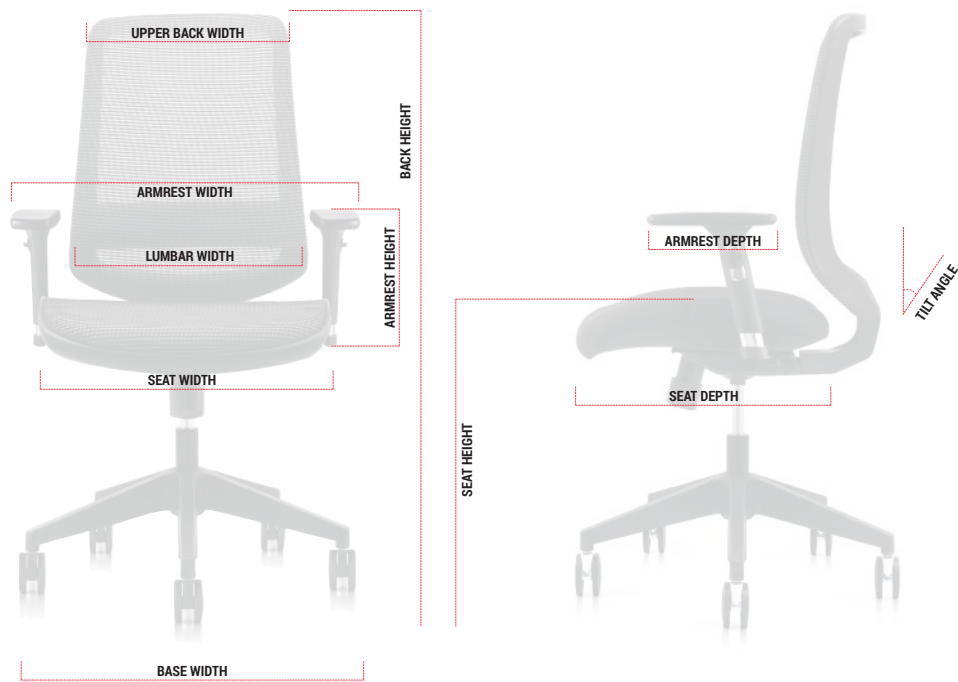
FAST-TRACK SPEC

The Fast-track C19 comes with a soft weave black mesh back and contoured foam seat in black fabric for comfort, ventilation, support and durability.



C19 is also available in a range of coloured meshes, leathers and fabrics subject to longer lead times.

C19



DIMENSIONS

Designed to adjust to most anthropometric measurements

BACK DIMENSIONS

UPPER BACK WIDTH	400	mm
LUMBAR WIDTH	460	mm
LUMBAR HEIGHT	90–160	mm
HEIGHT	560	mm
ANGLE	45	°

SEAT DIMENSIONS

STANDARD HEIGHT ADJUSTMENT	440–530	mm
OPTIONAL TALL STEM HEIGHT ADJUSTMENT	480–570	mm
WIDTH	510	mm
DEPTH	490	mm

3D ARMREST DIMENSIONS

WIDTH	270–320	mm
DEPTH	250–300	mm
HEIGHT ADJUSTABLE (6 SETTINGS)	190–240	mm
ANGLE	40	°

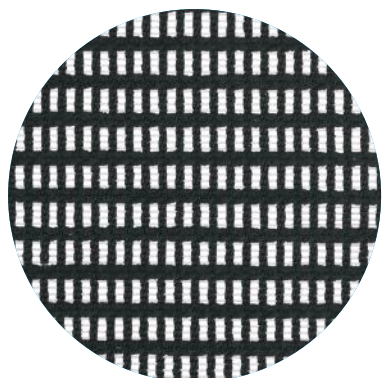
BASE DIMENSIONS

DIAMETER Ø	700	mm
------------	-----	----

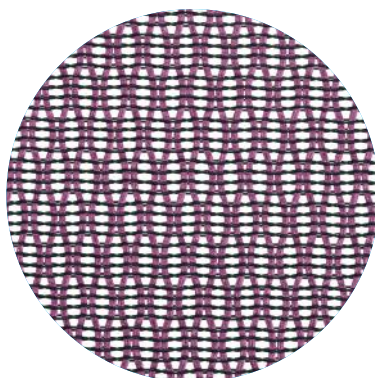
TEXTILES

Hood Seating hold the i29, F94 and C19 chairs in stock in soft weave black mesh* and black fabric** to allow us to meet our next-day delivery pledge.

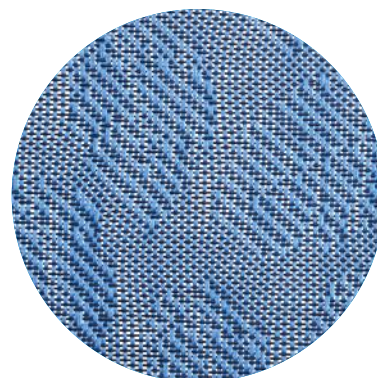
We also offer our ranges in a selection of durable and contemporary textiles from patterned meshes to luxurious leather and soft fabric subject to longer lead times.



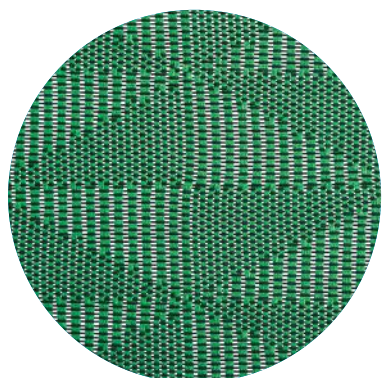
SOFT WEAVE MESH*



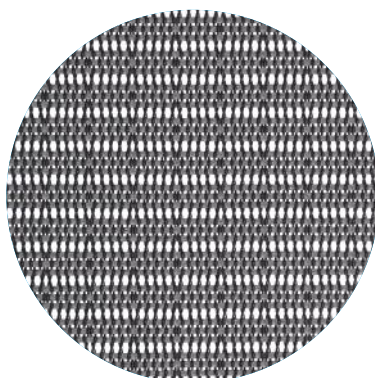
DIAMOND MESH



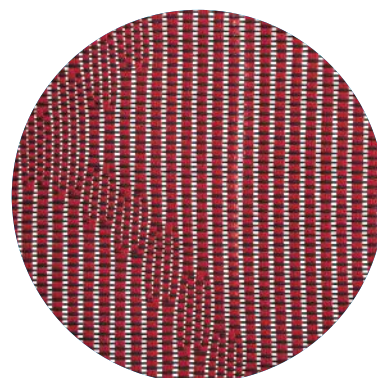
LEAF MESH



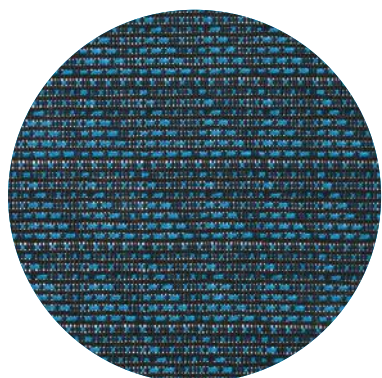
KITE MESH



STRIPE MESH



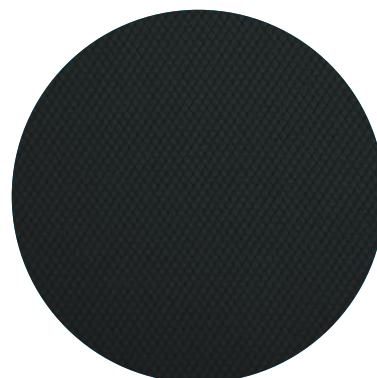
JUNGLE MESH



TRIANGLE MESH

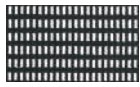


LEATHER

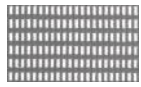


FABRIC**

SOFT WEAVE MESH



BLACK*
W21



TAUPE
W20



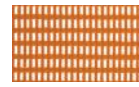
WHITE
W26



WINE
W27



VIVID RED
W22



ORANGE
W23



PARAKEET
W24

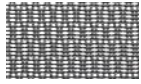


ROYAL BLUE
W25

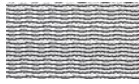
DIAMOND MESH



BLACK
W11



STEEL GREY
W10



WHITE
W17



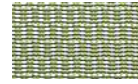
MAUVE
W16



RED
W12



COPPER
W13



LIME
W14

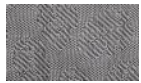


DENIM BLUE
W15

LEAF MESH



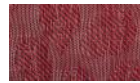
BLACK
W61



STEEL GREY
W60



WHITE
W67



RED
W62



ORANGE
W63



PEAR
W64



SKY BLUE
W65

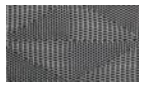


BLUE
W65-1

KITE MESH



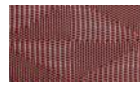
BLACK
W51



STEEL GREY
W50



WHITE
W57



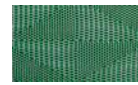
RED
W52



COPPER
W53



LIME
W54

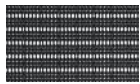


EMERALD
W54-1

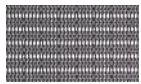


AQUA BLUE
W55

STRIPE MESH



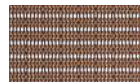
BLACK
W31



STEEL GREY
W30



RED
W32

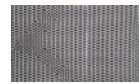


BRONZE
W33

JUNGLE MESH



BLACK
W71



STEEL GREY
W70



RED
W72



GREEN
W74

TRIANGLE MESH



STEEL GREY
W80



RED
W82



GREEN
W84



AQUA BLUE
W85

LEATHER



BLACK
P02



DARK BROWN
P01



TAN
P04



VIVID RED
P03

FABRIC



BLACK**
B41



GREY
B40



LIGHT GREY
B47



WINE
B46



VIVID RED
B42



BURNT ORANGE
B43



PALE LIME
B44



BLUE
B45

Colours may not be exact due to print processes. Please speak to your Hood Seating representative for upholstery samples.
For matching colour options, select matching fabric names (example: W27 Wine and B46 Wine).



SHOWROOM:

The Vault,
8-11 St Johns Lane,
London,
EC1M 4BF

HEAD OFFICE:

The Smart Centre,
Tenth Avenue,
Zone 3 Deeside Industrial Park,
Flintshire, CH5 2UA.

T: 0333 123 2000

E: SALES@HOODSEATING.COM