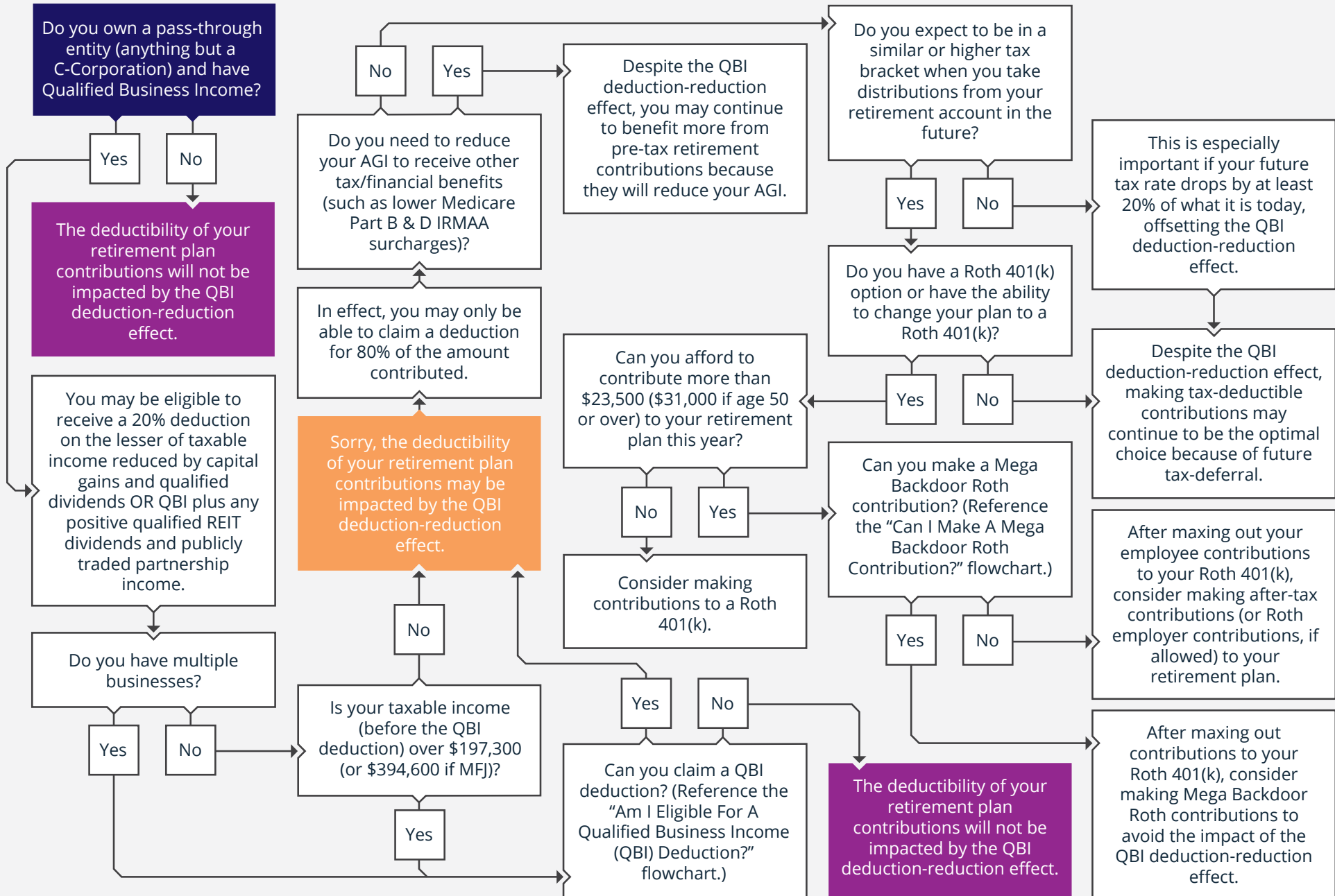


2025 · WILL THE DEDUCTIBILITY OF MY RETIREMENT PLAN CONTRIBUTIONS BE IMPACTED BY THE QBI RULES?



START HERE



Securities offered through Registered Representatives of Cambridge Investment Research, Inc., a broker-dealer member FINRA/SIPC. Advisory services through Cambridge Investment Research Advisors, Inc., a Registered Investment Adviser. Cambridge and Vanator Financial Services LLC are not affiliated.

Jacob Vanator, Financial Advisor

119 North Main Street, Eaton Rapids, MI, 48827
jacob@vanatorsvc.com | (517) 663-4204 | vanators.com