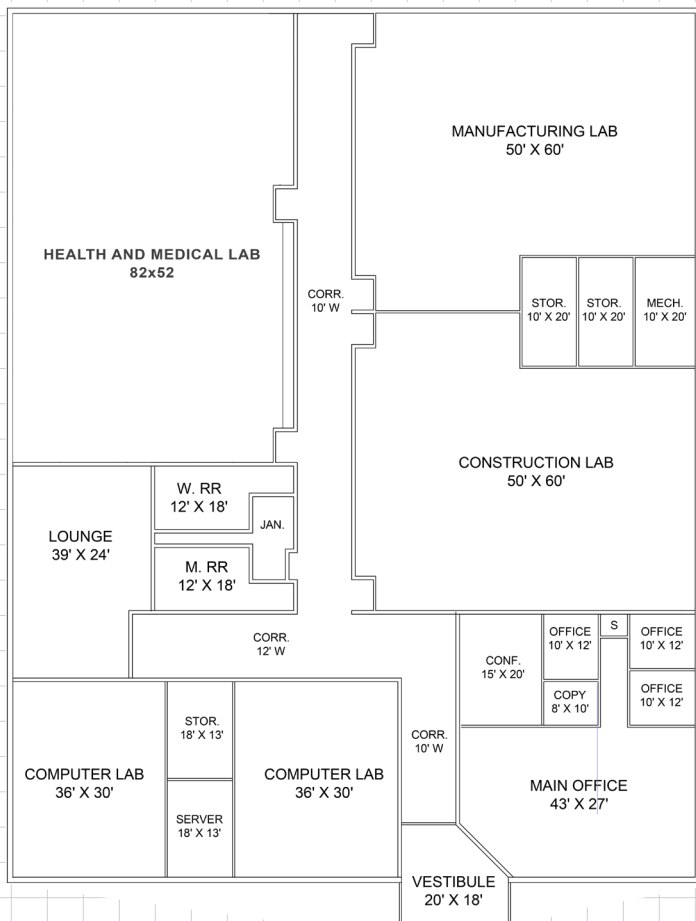
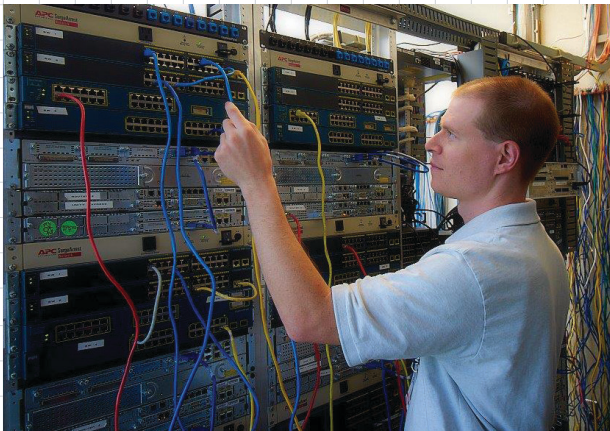


INVESTING IN TOMORROW'S WORKFORCE

Creating a pipeline of skilled workers in Central Missouri

JOIN THIS AMAZING
PARTNERSHIP OF
INDIVIDUALS AND
BUSINESSES TO BUILD
A TECHNICAL COLLEGE
IN ASHLAND.



PARTNERSHIPS

US Department of Commerce
Missouri Department of Higher Education and Workforce
Corey Myers Construction
Powers Construction
PM Excavating
C L Richardson Construction
Deline Holdings Inc
Veterans United Home Loans
Orscheln Industries
MFA Foundation
Boone County
City of Ashland
Columbia Safety & Supply
Septagon Construction
Missouri Employers Mutual Insurance
Hemme Construction
Central Bank of Boone County
Crockett Engineering
Plaza Commercial Realty
Moser's Grocery Store
Professional Contractors & Engineers Inc
Boone Health
First State Community Bank
Connections Bank
Parks Amusements



(over)

CONTACT
Luke Dietterle

lukedietterle@midmorpc.org
Office: 573-657-9779
Mobile: 815-592-7483

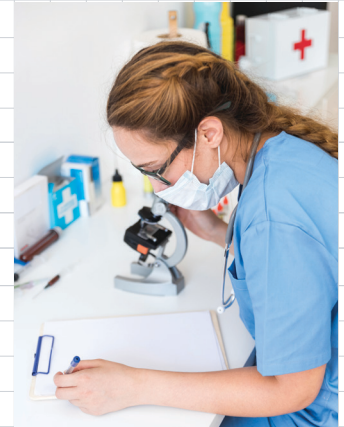
CAMPAIGN THERMOMETER:

\$2,095,931

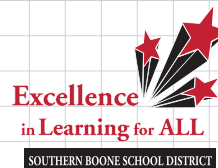


PARTNERSHIPS CONTINUED

Billy and Glenda Sapp, Founders, Emery Sapp & Sons
Bill J. Lloyd, Sr. Vice President, Bell Bank
David Bock, Executive Director, Mid-MO Regional Planning Commission
Shannon Brueggemann, Dean of Academic Affairs, Ranken Technical College
Christopher Felmlee, Superintendent, Southern Boone R-1 School District
Dan Kania, Vice President for Education, Ranken Technical College
Fred Parry, Founder/Publisher Emeritus, Inside Columbia
Tony St. Romaine, City Administrator, City of Ashland
Dave Westhoff, Owner, Westhoff Rentals
Tim Crockett, Partner Crockett Engineering
Connie Leopard, President, Quality Drywall Construction
Nicholas Orscheln, Real Estate Manager, Orscheln Companies
Ed Scavone, CEO, Central Bank of Boone County
Tamara Tateosian, Executive Director, Callaway Chamber of Commerce
Lonna Trammell, Regional Account Executive, Ameren Missouri
Sara Walsh, State Representative, Missouri House of Representatives
Paul Land, Owner, Plaza Commercial Realty
Joe Miller, Central Missouri, Regional President, First State Community Bank
Daniel Lauder, Director of Training and Workforce Development, QuesTec Mechanical
Todd Hoen, President, Columbia Market, Hawthorn Bank



TOGETHER, WE'LL LIGHT THE SPARK IN OUR STUDENTS AND PREPARE THEM FOR REWARDING CAREERS IN OUR COMMUNITIES!



BUILDING A TECHNICAL COLLEGE IN ASHLAND

For more information, go to tomorrowworkforce.org
Contact Luke Dietterle (815) 592-7483 • lukedietterle@midmorpc.org