



**Delta Community Action
Foundation, Inc.
Head Start & Early Head Start**

Community Needs Assessment Update



Garvin, McClain, &
Stephens Counties,
Oklahoma
2023

TABLE OF CONTENTS

EXECUTIVE SUMMARY	3
Purpose and Methodology.....	3
Key Findings.....	4
DEMOGRAPHICS.....	6
Population	6
Age.....	6
Race and Ethnicity	7
Primary Language	7
PRE-K.....	8
DISABILITIES	9
BIRTHS.....	10
ECONOMIC WELL-BEING	11
Wages	11
Income	12
Inflation.....	13
Consumer Price Index	13
POVERTY	14
SUPPLEMENTAL NUTRITION ASSISTANCE PROGRAM (SNAP)	15
OUT OF HOME CARE PLACEMENT (FOSTER CARE)	15
COUNTY HEALTH RANKINGS	16
HOUSING (FAIR MARKET RENT)	17
FOOD INSECURITY.....	18
COMMUNITY RESOURCES	19
REFERENCES	19

EXECUTIVE SUMMARY

PURPOSE AND METHODOLOGY

Delta Community Action Foundation in south central Oklahoma conducted a Community Assessment in 2020 per Head Start Standard 1302.11 and highlighted strengths, resources, needs, and barriers to self-sufficiency of at-risk children and families in poverty. The 2023 Community Assessment Update serves as an addendum and reflects the following: 1) significant changes to demographics and health, economic, and social conditions; 2) changed early childhood and child care information; 3) notable data trends; and 4) COVID-19 pandemic impacts on children and families.

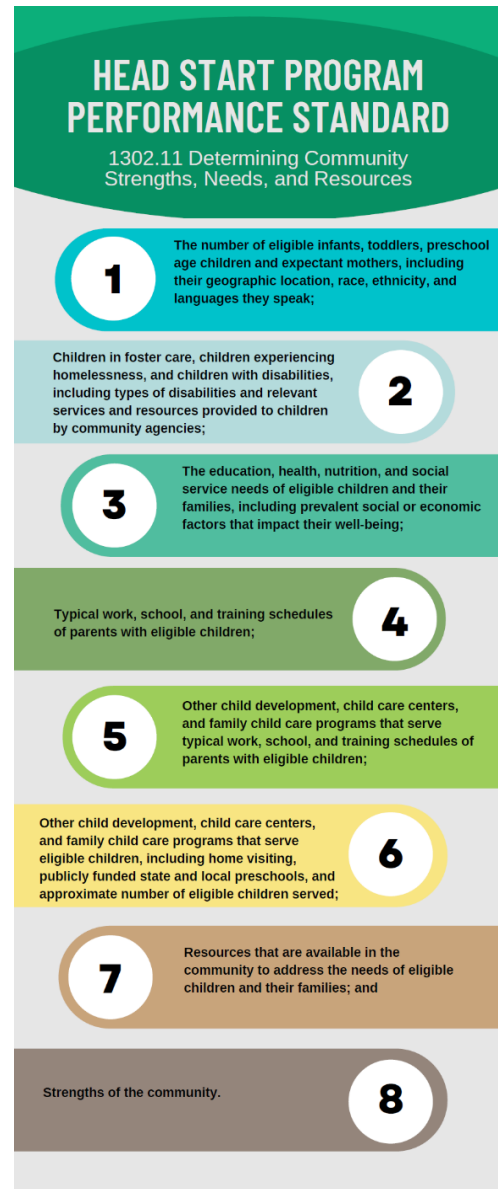
The Community Assessment and annual updates inform decisions by leadership and governing bodies including, but not limited to:

- ◆ Determination of long- and short-range program goals, objectives, and priorities;
- ◆ Types of services most needed for pregnant women, children, and families living in poverty;
- ◆ Gaps in service and geographic areas to be served, if additional funding is available, or if limitations in resources make it impossible to serve the entire service area;
- ◆ Locations of Early Head Start and Head Start services;
- ◆ Criteria to define and prioritize special populations for recruitment and selection for services;
- ◆ Community collaborations to develop, strengthen, and provide responsive programming; and
- ◆ Identification of and reduction of inequities within communities.

* The ACS is an official Census Bureau survey that is part of the decennial census program. Every year, the Census Bureau contacts over 3.5 million households nationwide to take part in the ACS, sending the survey to a percentage of households monthly. The ACS survey collects and produces information on social, economic, housing, and demographic characteristics about the U.S. population. The Census Bureau uses these data sets to track shifting demographics and learn about local communities.¹

Spiridis Consulting uses 5-Year ACS estimates rather than 1-Year Estimates, due to smaller margins of error.

Community data may occasionally be missing or skewed due to the COVID-19 pandemic.



KEY FINDINGS

The following are Key Findings from the 2023 Community Assessment Update. All areas (e.g., demographics, poverty, early education, disabilities, health, housing, births) were reviewed for significant, updated, or newly available data. Areas not included in this report have no significant or updated data to report; in such cases, the most recent data is in the 2022 report.

POVERTY

Poverty rates of children under age five are 30.9% (520 children) in Garvin County, 12.7% (275 children) in McClain County, and 27% (651 children) in Stephens County. In the three-county service area, there are an estimated 880 infants/toddlers and 586 preschool-aged children in poverty.

Young Children in Poverty by Age Group

County	Children Under Age 5			Infants and Toddlers		3- and 4-Year Olds	
	Total Children	# in Poverty	% in Poverty	Total*	In Poverty	Total*	In Poverty
Garvin	1,608	520	30.9%	965	312	643	208
McClain	2,331	275	12.7%	1,399	177	932	118
Stephens	2,409	651	27.0%	1,445	391	94	260

*Estimated infants/toddlers (60%) and 3- & 4-Year-olds (40%) Source: ACS, 2021 Five-Year Estimates

MINIMUM WAGE AND THE IMPACT ON ELIGIBILITY

Oklahoma' 2023 minimum wage is \$7.25/hr. Post-pandemic, employers have struggled to hire/retain staff; therefore, some have increased entry-level pay to \$10-\$15 or more. Increased wages impact HS/EHS eligibility, particularly for full-time (FT) working families. While rising wages are positive, they may preclude low-income families from automatically qualifying for assistance programs—such as HS/EHS—during an economically challenging period. A FT adult with one, two, or three children earning \$9.49, \$11.96, and \$14.43 respectively, is above the FPL. The living wage for one working adult and one child, for example, ranges from \$31-\$33/hr.—putting the cost of quality child care out of reach.

Working Families

Household Composition	Federal Poverty Level (FPL)*	Full-Time (FT) Annual Salary at Minimum Wage	Hourly Wage Exceeds FPL	Living Wage
1 FT Working Adult/1 Child	\$19,720	\$15,080	\$9.49/hour	\$31 - \$33/hr.
1 FT Working Adult/2 Children	\$24,860	\$15,080	\$11.96/hour	\$40 - \$41/hr.
1 FT Working Adult/3 Children	\$30,000	\$15,080	\$14.43/hour	\$51 - \$53/hr.

*Families with income at or below FPL are categorically eligible for Head Start/Early Head Start services

BIRTHS AND ELIGIBLE PREGNANT WOMEN

2022 Births by county were as follows: Garvin (323); McClain (488); and Stephens (462). Of birth mothers, 69.3% were non-Hispanic (NH) White, 12.6% were Hispanic, 9.3% were Native American/Alaskan Native, 6.3% identified as multiracial, and 1.5% were NH Black. Based on county births paid by Medicaid, the estimated numbers of income-eligible pregnant women are 174 in Garvin County, 168 in McClain County, and 227 in Stephens County.

NEED FOR QUALITY CARE

There is a significant need for quality care for children under age five, particularly for infants, toddlers, and three-year-olds. In FY 2022, there were 337 enrolled pre-k children in Garvin County, 445 pre-k children in McClain County, and 494 pre-k children in Stephens County; of these children, only 3.7% were 3-year-olds and 96.3% were 4-year-olds.

DISABILITIES

During 2021-22, 266 children received Early Intervention services in Garvin, McClain, and Stephens counties and surrounding counties. During FY 2021 the number of children ages 3-5 with diagnosed disabilities were 61 in Garvin County, 70 in McClain County, and 61 in Stephens County.

COUNTY HEALTH RANKINGS

Of Oklahoma's 77 counties, McClain County (#9) ranks among the healthiest, while Garvin (#68) ranks among the least healthy. Stephens County (#49) ranks among the lower middle range of counties. Areas of challenge or "areas to explore" are adult smoking (19%-24%), adult obesity (35%-41%), and uninsured adults (16%-21%); these most negatively impact the health of residents.

FOOD INSECURITY

Child food insecurity rates in 2021 were 16.9% in Garvin County, 10.9% in McClain County, and 18.9% in Stephens County—lower than Oklahoma at 19.1%. Between 2019 (pre-pandemic) and 2021, child food insecurity decreased by 1% - 3% in the three-county area. Massive public/private response to hunger during the pandemic was successful in mitigating food insecurity rates across the country. While food insecurity improved for sub-populations, there was a deepening divide across racial and ethnic lines. In 2021, 12% - 14% of the Hispanic general population and 14% - 22% of the African American community were food insecure, higher than 8% - 13% of the non-Hispanic White population.

In March 2020, Congress increased Supplemental Nutrition Assistance Program (SNAP) benefits during the pandemic. However, SNAP benefits returned to standard amounts in March 2023. With reduced benefits and food costs increasing, communities are again experiencing higher food insecurity rates.

EARLY CHILDHOOD WORKFORCE

In February 2023, the National Head Start Association surveyed grantees about workforce struggles. Nearly 200 grantees responded, representing about 10% of children and families served nationwide. Twenty percent of HS/EHS classrooms were closed, of which 81% of grantees cited staff vacancies as the primary reason and that vacancies were higher than usual. Nineteen percent of positions were vacant with 65% of grantees giving the major reason as compensation. There were up to 275K children on HS/EHS waiting lists, equating to up to 33% of funded slots. Turnover included not only lead teachers but also other HS staff who left for entry-level jobs elsewhere that pay more and offer better benefits.

DEMOGRAPHICS

POPULATION

The total population of the three-county area is 450,344 with a population density of 50 people per square mile, compared to 58 people per square mile in Oklahoma.²

Population Density

Location	Total Estimated Population, 2021	Total Land Area (Square Miles)	Population Density (Per Square Mile)
Oklahoma	3,948,136	68,596.51	58
Garvin County	25,949	802.14	32
McClain County	41,258	570.72	72
Stephens County	42,983	870.21	49

Source: U.S. Census Bureau, American Community Survey, 2021 Five-Year Estimates

AGE

Of the population, 6.3% or 1,639 children in Garvin County; 5.7% or 2,333 in McClain County; and 5.8% or 2,504 in Stephens County are children under age five.³

Population by Age Groups

	0-4	5-17	18-24	25-34	35-44	45-54	55-64	65+
Oklahoma	6.4%	17.9%	9.6%	13.6%	12.7%	11.7%	12.5%	15.6%
Garvin County	6.3%	18.9%	7.9%	11.7%	12.7%	11.7%	13.3%	17.6%
McClain County	5.7%	20.0%	7.4%	11.4%	14.4%	12.6%	13.1%	15.5%
Stephens County	5.8%	17.5%	7.6%	11.3%	12.1%	11.6%	14.4%	19.8%

Source: U.S. Census Bureau, American Community Survey, 2021 Five-Year Estimates

RACE AND ETHNICITY

Following are racial and ethnic populations in the three-county area: non-Hispanic White (81.6%); Multiple Races (9.1%); Native American/Alaskan Native (5.1%); African American (1.6%); Asian (0.4%); and Other Race (2.2%). The Hispanic population is 9.7%, less than Oklahoma (11.4%).⁴

Population By Race Alone

	White	Black	Asian	Native American	Native Hawaiian	Other Race	Multiple Races
Oklahoma	69.7%	7.2%	2.2%	7.7%	0.2%	3.0%	10.0%
Garvin Co.	80.8%	2.0%	0.4%	4.8%	0.0%	1.1%	11.0%
	20,954	514	101	1,233	0	295	2,852
McClain Co.	82.7%	1.2%	0.2%	5.8%	0.1%	1.0%	9.2%
	34,101	477	75	2,380	20	412	3,793
Stephens Co.	81.1%	1.7%	0.6%	4.7%	0.1%	3.9%	8.0%
	34,859	715	236	2,002	60	1,686	3,425

Source: U.S. Census Bureau, American Community Survey, 2021 Five-Year Estimates, B02001

Population By Hispanic Origin

Location	Hispanic Population		Non-Hispanic Population	
	Count	Percent	Count	Percent
Oklahoma	443,914	11.2%	3,504,222	88.8%
Garvin County	2,521	9.7%	23,428	90.3%
McClain County	3,491	8.5%	37,767	91.5%
Stephens County	3,514	8.2%	39,469	91.8%

Source: U.S. Census Bureau, American Community Survey, 2021 Five-Year Estimates, B03003

PRIMARY LANGUAGE

The most spoken home language is English, ranging from 94% - 95% in the three-county area. Of the population, 5% - 6% speak Spanish in the home.⁵

Languages Spoken at Home

	English Only	Spanish	Indo-European	Asian/Pacific Islander	Other Languages
Oklahoma	89.0%	7.8%	0.9%	1.6%	0.7%
Garvin County	93.5%	5.6%	0.5%	0.2%	0.2%
McClain County	93.5%	5.8%	0.5%	0.1%	0.1%
Stephens County	94.5%	4.5%	0.7%	0.3%	0.0%

Source: U.S. Census Bureau, American Community Survey, 2021 Five Year Estimates

PRE-K

In FY 2022, there were 337 enrolled pre-k children in Garvin County, 445 pre-k children in McClain County, and 494 pre-k children in Stephens County; of these children, 3.7% were 3-year-olds and 96.3% were 4-year-olds.⁶

Garvin County: Pre-K Student Count, FY 2022 Report

District	Total PK3		Total PK4		Total Pre-K
	Half Day	Full Day	Half Day	Full Day	
Elmore City-Pernell	0	2	0	31	33
Lindsay	0	4	0	79	83
Maysville	0	0	0	20	20
Paoli	0	0	0	9	9
Pauls Valley	0	1	0	77	78
Stratford	0	0	0	39	39
Whitebead	0	1	0	37	38
Wynnewood	0	0	0	37	37
Total	0	8	0	329	337

Source: Oklahoma State Department of Education

McClain County: Pre-K Student Count, FY 2022 Report

District	Total PK3		Total PK4		Total Pre-K
	Half Day	Full Day	Half Day	Full Day	
Blanchard	4	0	0	110	114
Dibble	0	1	0	35	36
Newcastle	0	4	0	131	135
Purcell	2	0	0	80	82
Washington	0	1	0	57	58
Wayne	0	0	0	20	20
Total	6	6	0	433	445

Source: Oklahoma State Department of Education

Stephens County: Pre-K Student Count, FY 2022

District	Total PK3		Total PK4		Total Pre-K
	Half Day	Full Day	Half Day	Full Day	
Bray-Doyle	0	0	0	20	20
Central High	0	1	0	23	24
Comanche	0	4	0	52	56
Duncan	10	0	0	201	211
Empire	0	0	0	28	28
Grandview	0	5	0	16	21
Marlow	0	1	0	94	95
Velma-Alma	0	6	0	33	39
Total	10	17	0	467	494

Source: Oklahoma State Department of Education

DISABILITIES

Oklahoma's SoonerStart/Early Intervention program is the Part C system of the Individuals with Disabilities Education Act (IDEA) to meet the needs of infants and toddlers with disabilities and developmental delays. During 2021-22, 266 children received Early Intervention services in Garvin, McClain, and Stephens counties and surrounding counties.⁷

Early Intervention Birth-Three, 2021-22

	SoonerStart Site: Chickasha (Stephens and Grady Counties)	SoonerStart Site: Norman (Garvin, McClain, and Cleveland counties)
Child Count Birth – Age 1	9	18
Child Count Birth – Age 2	62	204

Source: Oklahoma State Department of Education, SoonerStart

Oklahoma's Local Education Agencies (LEAs) provide Part B services under IDEA to students, ages 3 through 21. During FY 2021 the number of children ages 3-5 with diagnosed disabilities were 61 in Garvin County, 70 in McClain County, and 61 in Stephens County.⁸

Disabilities by School District (Ages 3-5)

Child Count FY 2021

Garvin County		McClain County		Stephens County	
School District	Count	School District	Count	School District	Count
Elmore City-Pernell	7	Blanchard Public Schools	16	Bray-Doyle Public Schools	6
Lindsay Public Schools	15	Dibble Public Schools	8	Comanche Public Schools	9
Maysville Public Schools	5	Newcastle Public Schools	20	Duncan Public Schools	29
Paoli Public Schools	3	Purcell Public Schools	17	Empire Public Schools	4
Pauls Valley	16	Wayne Public Schools	5	Marlow Public Schools	7
Stratford Public Schools	7	Washington Public Schools	4	Velma-Alma Public Schools	6
Wynnewood Public Schools	8				
Total	61	Total	70	Total	61

Source: Oklahoma State Department of Education

BIRTHS

The following infants were born by county in 2022: Garvin (323); McClain (488); and Stephens (462). Of mothers giving birth, 69.3% were non-Hispanic (NH) White, 12.6% were Hispanic, 9.3% were Native American/Alaskan Native mothers (AIAN); 6.3% identified as multiracial; and 1.5% were NH Black mothers. Based on county births paid by Medicaid, following are the estimated numbers of income-eligible pregnant women: Garvin (174); McClain (168); and Stephens (227).⁹

Births and Race/Ethnicity of Mother

County of Residence	Births 2021	Births 2022	Birth Rate Per 1,000 in 2020	Race/Ethnicity of Mother, 2022				
				White	Native American	Black/African-American	Asian/Pacific Islander	Hispanic
Garvin	337	323	12.6	73.7%	19.9%	6.0%	0.0%	11.4%
McClain	456	488	10.8	85.4%	11.3%	2.0%	1.3%	8.8%
Stephens	484	462	10.6	88.1%	8.2%	3.3%	0.0%	9.1%

Source: Oklahoma State Department of Health

ECONOMIC WELL-BEING

WAGES

Minimum Wage

Oklahoma's 2023 state minimum wage rate remains at \$7.25 per hour. A full time (2,080 hours) minimum wage worker earns \$15,080 per year (gross pay). The 2023 Federal Poverty Level (FPL) for a family unit of two people is \$19,720 per year; therefore, a single parent with one child who is working full time at minimum wage (\$15,080) falls below the FPL.¹⁰

Post-pandemic, many employers have struggled to hire and retain employees. Therefore, some employers have increased entry-level pay to \$10-\$15 or more. A single parent with one child who is working full time at \$9.49/hour (\$19,739) or more is above the FPL. A head of household of four who is working full time at \$14.43/hour (\$30,014) or more is above the FPL.

Living Wage¹¹

Living wage is the hourly rate that a full-time (2,080 hours annually) worker must earn to support the family and cover daily expenses.

- The living wage for one working adult and one child in the three-county area ranges from \$31-\$33. A full-time working adult with one child who is making minimum wage earns only 22% - 23% of the living wage in the service area.
- The living wage for a household with one working parent, one non-working parent, and two children is \$31-\$33 in the three-county area, just 27% of minimum wage.

2023 Living Wage

1 Adult				2 Adults (1 Working)				2 Adults (Both Working)			
Number of Children				Number of Children				Number of Children			
0	1	2	3	0	1	2	3	0	1	2	3
Garvin County											
\$14.90	\$31.48	\$39.86	\$51.40	\$24.75	\$31.27	\$36.21	\$39.68	\$12.37	\$17.70	\$22.22	\$26.02
McClain County											
\$16.06	\$32.86	\$41.24	\$53.49	\$26.09	\$32.66	\$37.59	\$41.62	\$13.05	\$18.39	\$22.91	\$26.99
Stephens County											
\$15.09	\$31.48	\$39.86	\$51.69	\$24.94	\$31.27	\$36.21	\$39.95	\$12.47	\$17.70	\$22.22	\$26.15

Notes: 1) For this model, the assumption is the sole provider is working full-time (2080 hours/year). 2) For two-adult families where one adult is not in the labor force, one adult is assumed to be employed full-time while the other non-wage-earning adult provides full-time childcare for the family's children. Source: Massachusetts Institute of Technology

INCOME

While McClain County's median household income is \$73, 914, Garvin (\$50,441) and Stephens (\$53,470) counties are closer to the state of Oklahoma's median household income (56,956). Of households, 22.1% in Garvin County, 12.9% in McClain County, and 21.5% in Stephens County earn under \$25,000, compared to Oklahoma (20.2%).¹²

Mean/Median Household Income

Location	Total Households	Average (Mean) Household Income	Median Household Income
Oklahoma	1,503,868	\$78,040	\$56,956
Garvin County	9,888	\$66,313	\$50,441
McClain County	14,836	\$93,307	\$73,914
Stephens County	16,633	\$69,178	\$53,470

Source: U.S. Census Bureau, American Community Survey, 2021 Five-Year Estimates, S1901

Household Income Levels

Location	Under \$25,000	\$25,000 - \$49,999	\$50,000 - \$99,999	\$100,000 - \$199,999	\$200,000+
Oklahoma	20.2%	23.7%	31.4%	19.7%	5.1%
Garvin County	22.1%	27.1%	30.7%	17.1%	3.0%
McClain County	12.9%	19.0%	32.1%	28.8%	7.2%
Stephens County	21.5%	25.6%	33.0%	16.3%	3.5%

Source: U.S. Census Bureau, American Community Survey, 2021 Five-Year Estimates, S1901

Median Household Income by Race/Ethnicity of Householder

Location	NH White	Black	Asian	AIAN*	NHPI*	Other Race	Multiple Races	Hispanic/Latino
Oklahoma	\$61,570	\$39,021	\$64,846	\$50,514	\$39,605	\$47,859	\$51,716	\$49,969
Garvin	\$51,167	\$65,431	\$50,625	\$41,316	No data	\$76,797	\$46,513	\$42,727
McClain	\$74,435	\$27,589	No data	\$77,267	No data	\$85,865	\$80,250	\$69,866
Stephens	\$54,463	\$45,658	No data	\$46,923	No data	\$51,618	\$54,063	\$46,151

*NH=Non-Hispanic; AIAN=American Indian Alaska Native; NHPI=Native Hawaiian/Pacific Islander

Source: U.S. Census Bureau, American Community, 2021 Five-Year Estimates

INFLATION

The annual U.S. inflation rate was 3.7% for the 12 months ended August 2023. The 2022 average monthly inflation was 8%—a 40 year high. Since June 2020, prices have risen by a total of 17.4%.¹³

U.S. Inflation Rate

Year	Jan	Feb	Mar	Apr	May	June	July	Aug	Sept	Oct	Nov	Dec	Avg.
2023	6.4	6.0	5.0	4.9	4.0	3.0	3.2	3.7					
2022	7.5	7.9	8.5	8.2	8.6	9.1	8.5	8.3	8.2	7.7	7.1	6.5	8.0
2021	1.4	1.7	2.6	4.2	5.0	5.4	5.5	5.3	5.4	6.2	6.8	7.0	4.7
2020	2.5	2.3	1.5	.3	.1	0.6	1.0	1.3	1.4	1.2	1.2	1.4	1.2
2019	1.6	1.5	1.9	2.0	1.8	1.6	1.8	1.7	1.7	1.8	2.1	2.3	1.8

Source: U.S. Department of Labor, August 2023

CONSUMER PRICE INDEX

The Consumer Price Index (CPI) measures the average change in prices paid by consumers for goods and services needed for daily living (e.g., food, shelter, gas). Prices are collected monthly in 75 urban areas nationwide from approximately 6,000 housing units and 22,000 retail establishments (e.g., department stores, supermarkets, gas stations).¹⁴ The annual inflation rate was 3.7% for the 12 months ended August 2023. Between July 2023 and August 2023, there was a .5% increase in “all items.”¹⁵

Consumer Price Index—August 2023

	1-Month Percent Change (From July 2023)	12 Month Percent Change (From July 2022)
All Items	0.6	3.7
Food	0.2	4.3
Food at home	0.2	3.0
Food away from home	0.3	7.1
Energy	5.6	-3.6
Gasoline (all types)	10.6	-3.3
Fuel oil	9.1	-14.8
Electricity	0.2	2.1
Utility (piped) gas service	0.1	-16.5
All Items Less Food and Energy	0.3	4.3
Apparel	0.2	3.1
Shelter	0.3	7.3
Transportation services	2.0	10.3
Medical care services	0.1	-2.1

Source: U.S. Bureau of Labor Statistics

POVERTY

The following are county estimates of children under age five in poverty: Garvin (520 children, 30.9% poverty); McClain (275 children, 12.7% poverty); and Stephens (651 children, 27% poverty).¹⁶ The largest estimated numbers of children under age five in poverty are in Pauls Valley (280 children, 56.5% poverty), Purcell (150 children, 26.5% poverty), and Duncan (458 children, 31.1% poverty).¹⁷

Children under Five in Poverty by Age Group

County	Children Under 5	Estimated Population Under 5 in Poverty		Infants and Toddlers*	Infants and Toddlers in Poverty	3- and 4-Year Olds*	3- and 4-Year Olds in Poverty
Garvin Co.	1,608	30.9%	520	965	312	643	208
McClain Co.	2,331	12.7%	275	1,399	177	932	118
Stephens Co.	2,409	27.0%	651	1,445	391	94	260

*Based on estimated breakdown by age: infants/toddlers (60%); 3- and 4-Year-olds (40%) of total children under 5

Source: U.S. Census Bureau, American Community, 2021 Five-Year Estimates

Children Under Age 6 By Federal Poverty Level (FPL) Thresholds

Location	Under 50% FPL*		100-124% of FPL		125-149% of FPL	
	Count	Percent	Count	Percent	Count	Percent
Garvin County	257	13.3%	167	8.7%	213	11.0%
McClain County	259	9.1%	199	7.0%	137	4.8%
Stephens	485	16.3%	173	5.8%	249	8.4%

*Considered Deep Poverty Source: U.S. Census Bureau, B17024, American Community, 2021 Five-Year Estimates

Children Under 5 in Poverty

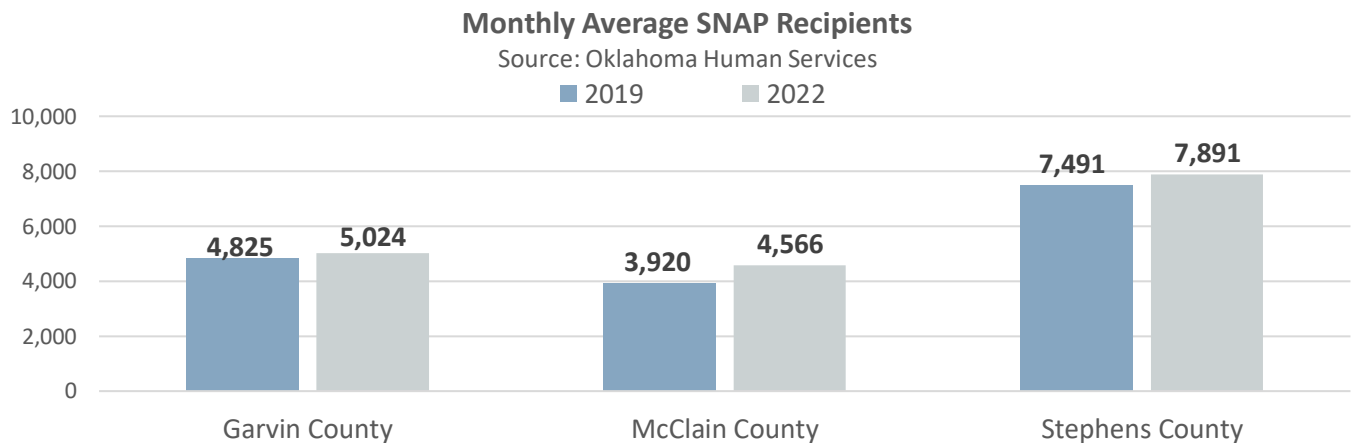
County	Location	Children Under Age 5	# in Poverty	% in Poverty
Garvin	Lindsay	190	5	2.6%
	Maysville	56	19	33.9%
	Pauls Valley	496	280	56.5%
	Stratford	111	38	34.2%
	Wynnewood	89	41	46.1%
McClain	Blanchard	348	25	7.2%
	Dibble	38	8	21.1%
	Goldsby	126	5	4.0%
	Newcastle	613	20	3.3%
	Purcell	567	150	26.5%
Stephens	Bray	29	4	13.8%
	Central High	47	8	17.0%
	Comanche	110	37	33.6%
	Duncan	1,471	458	31.1%
	Marlow	300	109	36.3%

Source: U.S. Census Bureau, American Community, 2021 Five-Year Estimates

SUPPLEMENTAL NUTRITION ASSISTANCE PROGRAM (SNAP)

SNAP enables low-income families to buy nutritious food with Electronic Benefits Transfer (EBT) cards. SNAP recipients spend their benefits to buy eligible food in authorized retail food stores/Farmers' Markets. The Gross Monthly Income Eligibility Standard is 130% of the Federal Poverty Level.¹⁸

Between FY 2019 and FY 2022, the monthly average of SNAP recipients increased by 4.1% in Garvin County, 16.5% in McClain County, and 5.3% in Stephens County.¹⁹



OUT OF HOME CARE PLACEMENT (FOSTER CARE)

In FY 2021, 17 children in Garvin County, 15 children in McClain County, and 16 children in Stephens County were in out-of-home care placement, for a total of 48 children aged 0-4. In FY 2022, 13 children in Garvin County, 11 children in McClain County, and 19 children in Stephens County were in out-of-home care placement for a total of 43 children aged 0-4.²⁰

Out-of-Home Care Placement (Children Ages 0-4)

Location	Under Age 1			Ages 1 - 2			Ages 3 - 4		
	FY 2020	FY 2021	FY 2022	FY 2020	FY 2021	FY 2022	FY 2020	FY 2021	FY 2022
Oklahoma	848	788	680	1,774	1,710	1,493	1,267	1,240	1,088
Garvin County	6	3	3	7	9	5	4	5	5
McClain County	2	5	5	5	4	5	4	6	1
Stephens County	5	4	5	11	11	8	2	1	6
3-County Total	13	12	13	23	24	18	10	12	12

Source: Oklahoma Human Services, Annual Report Tables

COUNTY HEALTH RANKINGS

Health Outcomes represent a county’s current health and reflect the physical and mental well-being of residents through measures representing length and quality of life. Health Factors (health behaviors, clinical care, social & economic factors, physical environment) represent issues that, if modified, can improve length and quality of life. They are predictors of how healthy communities can be in the future.²¹ Of Oklahoma’s 77 counties, McClain County (#9) ranks among the healthiest, while Garvin (#68) ranks among the least healthy. Stephens County (#49) ranks among the lower middle range of counties. Areas of challenge or “areas to explore” are adult smoking (19%-24%), adult obesity (35%-41%), and uninsured adults (16%-21%); these most negatively impact the health of residents.²²

2023 County Health Rankings

	Garvin County	McClain County	Stephens County	Oklahoma
Areas of strength				
Areas to explore				
Health Outcomes Ranking	68	9	49	
	Among Least Healthy	Among Healthiest	Lower Middle Range	
Length of Life	68	9	46	
Quality of Life	60	15	53	
Health Factors Ranking	46	3	40	
	Lower Middle Range	Among Healthiest	Lower Middle Range	
Health Behaviors	48	4	33	
Clinical Care	36	7	37	
Social & Economic Factors	42	5	49	
Physical Environment	60	43	44	

Poor or Fair Health	19%	15%	18%	17%
Adult Smoking	24%	19%	23%	20%
Adult Obesity	40%	35%	41%	37%
Food Environment Index	7.5	8.4	6.9	5.8
Physical Inactivity	32%	26%	32%	28%
Exercise Opportunities	40%	55%	68%	71%
Excessive Drinking	15%	15%	14%	14%
Income Inequality	4.3	4.1	4.2	4.5
Uninsured	21%	16%	19%	18%
Primary Care Physicians	3,080:1	2,070:1	2,540:1	1,650:1
Dentists	2,870:1	2,900:1	1,660:1	1,570:1
Mental Health Providers	550:1	840:1	800:1	240:1
Severe Housing Problems	10%	10%	11%	14%
Air Pollution	9.3	9.9	8.8	8.7
Children in Single-Parent Households	28%	17%	22%	26%

Note: Not all indicators are noted here. Refer to data throughout the Community Assessment or visit website for complete data. N/A = Not Available Source: countyhealthrankings.com

HOUSING (FAIR MARKET RENT)

The Fair Market Rent rate (FMR), established by the Department of Housing and Urban Development, is used as a basis for paying federal housing assistance programs like the Housing Choice Voucher Program (often called “Section 8”). FMR prices are gross rent prices, meaning they include utilities.

The FMR for a two-bedroom rental will increase by 11.8% in Garvin and Stephens counties and by 7.4% in McClain County between 2023 and 2024.²³

Fair Market Rent²⁴

County	Year	Efficiency	One-Bedroom	Two-Bedroom	Three-Bedroom	2-Bedroom Housing Wage
Garvin	2023	\$601	\$605	\$797	\$1,043	\$15.33
	2024	\$674	\$678	\$891	\$1,159	\$17.13
McClain	2023	\$775	\$821	\$1,016	\$1,353	\$19.54
	2024	\$824	\$884	\$1,091	\$1,454	\$20.98
Stephens	2023	\$639	\$643	\$797	\$1,115	\$15.33
	2024	\$734	\$739	\$891	\$1,256	\$17.13

Source: U.S. Department of Housing and Urban Development’s Office of Policy Development and Research

FOOD INSECURITY

Food insecurity refers to the USDA’s measure of lack of access to a sufficient amount of food for an active, healthy life for all household members, and limited or uncertain availability of nutritionally adequate foods. According to Feeding America, “Food insecurity can cause serious health issues when families have to choose between spending money on food or on medicine and healthcare, as well as choosing between food and rent, bills, and transportation. Further, food insecurity can make it more difficult for a child to properly learn and develop.”²⁵

Child food insecurity rates in 2021 were 16.9% in Garvin County, 10.9% in McClain County, and 18.9% in Stephens County—lower than Oklahoma at 19.1%. Between 2019 (pre-pandemic) and 2021, child food insecurity decreased by 1% - 3% in the three-county area. Massive public/private response to hunger during the pandemic was successful in mitigating food insecurity rates across the country. While food insecurity improved for sub-populations, there was a deepening divide across racial and ethnic lines. In 2021, 12% - 14% of the Hispanic general population in the three-county area and 14% - 22% of the African American community were food insecure, higher than 8% - 13% of the non-Hispanic White population.²⁶

Child Food Insecurity

Location	2019	2020	2021
Oklahoma	20.4%	19.2%	19.1%
Garvin County	19.6%	20.3%	16.9%
McClain County	14.1%	14.0%	10.9%
Stephens County	21.8%	22.2%	18.9%

Source: Feeding America

Overall Food Insecurity by Race/Ethnicity, 2021

Location	Overall Population	Black (All Ethnicities)	Latino/Hispanic	White (Non-Hispanic)
Oklahoma	14.1%	25%	14%	11%
Garvin County	12.8%	22%	12%	12%
McClain County	8.9%	No Data	10%	8%
Stephens County	14.3%	14%	14%	13%

"Overall" refers to all individuals, including children, regardless of race or ethnicity. Information unavailable for other races and ethnicities. Source: Feeding America, 2021

COMMUNITY RESOURCES

For community resource information in Garvin and Stephens counties, visit: [Helpline 211](#)

For community resource information in McClain County, visit: [Pathways of Central Oklahoma 211](#)

For community resource information in other Oklahoma counties, visit: [Oklahoma 211 Map by County](#)

REFERENCES

- ¹ U.S. Census Bureau. (2021). American Community Survey (ACS) User Guide. Retrieved from https://www.census.gov/content/dam/Census/library/publications/2021/acs/acs_pums_handbook_2021.pdf
- ² U.S. Census Bureau. (2022 Dec). American Community Survey 2021 Five-Year Estimates. Retrieved from <https://data.census.gov/cedsci/>
- ³ U.S. Census Bureau. (2022 Dec). American Community Survey 2021 Five-Year Estimates. Retrieved from <https://data.census.gov/cedsci/>
- ⁴ U.S. Census Bureau. (2022 Dec). American Community Survey 2021 Five-Year Estimates.
- ⁵ U.S. Census Bureau. (2022 Dec). American Community Survey 2021 Five-Year Estimates.
- ⁶ *School Site Totals*. Oklahoma State Department of Education. (2022). Retrieved, from <https://sde.ok.gov/documents/state-student-public-enrollment>
- ⁷ SoonerStart Early Intervention. (2022). *Data/Reporting Part C: Annual SoonerStart Data Profiles*. Oklahoma State Department of Education. Retrieved 2023 from <https://sde.ok.gov/datareporting-part-c>
- ⁸ *Special Education Data Reporting-District Reporting*. Oklahoma State Department of Education. (2020). Retrieved February 2022, from <https://sde.ok.gov/documents/2012-10-01/special-education-data-and-reporting-part-b-children-ages-3-through-21>
- ⁹ OK State Department of Health, OK Statistics on Health Available for Everyone (OK2SHARE). (2022). Retrieved from https://www.health.state.ok.us/stats/Vital_Statistics/Birth/Final/Statistics_2010up.shtml
- ¹⁰ U.S. Department of Health and Human Services. (2023 January). *Federal Poverty Guidelines*. Office of the Assistant Secretary of Planning and Evaluation (ASPE). Retrieved from <https://aspe.hhs.gov/topics/poverty-economic-mobility/poverty-guidelines>
- ¹¹ Glasmeier, Amy. K. and the Massachusetts Institute of Technology. (2023). *Living Wage Calculator*. Retrieved 2023 from <https://livingwage.mit.edu/>
- ¹² U.S. Census Bureau. (2022 Dec). American Community Survey 2021 Five-Year Estimates. Chart S1901.
- ¹³ Current US inflation rates: 2020-2022: US Inflation Calculator. (2023, Sept 13). Retrieved from <https://www.usinflationcalculator.com/inflation/current-inflation-rates/>
- ¹⁴ CPI Home. U.S. Bureau of Labor Statistics. (n.d.). Retrieved from <http://www.bls.gov/cpi/>
- ¹⁵ CPI Home. U.S. Bureau of Labor Statistics. (2023, Sept). Retrieved from <http://www.bls.gov/cpi/>
- ¹⁶ U.S. Census Bureau. (2021 Dec). American Community Survey 2021 Five-Year Estimates. Retrieved from <https://data.census.gov/cedsci/>
- ¹⁷ U.S. Census Bureau. (2021 Dec). American Community Survey 2017-2021 Five-Year Estimates. Retrieved 2023 from <https://data.census.gov/cedsci/>

-
- ¹⁸ *Program Overview*. Human Services Department - OKDHS. (n.d.). Retrieved 2023 from <https://oklahoma.gov/okdhs/services/snap.html>
- ¹⁹ *Annual Report Tables: Average Monthly SNAP Recipients*, Human Services Department - OKDHS. (2019-2022). Retrieved 2023 from <https://oklahoma.gov/okdhs/library/rpts/s21-dhsannualreport-tables.html>
- ²⁰ *Annual Report Tables: Out-of-Home Care Placements by Age*, Human Services Department - OKDHS. (2020-2022). Retrieved September 2023, from <https://oklahoma.gov/okdhs/library/rpts/s22-dhsannualreport-tables.html>
- ²¹ University of WI Population Health Institute. (2023). County Health Rankings. Retrieved from <https://www.countyhealthrankings.org/>
- ²² University of Wisconsin Population Health Institute. (2023). County Health Rankings.
- ²³ Formula used: FMR x 12 months, divided by 30% (cost burdened rate), divided by 2,080 (full time hours)
- ²⁴ U.S. Department of Housing and Urban Development, Office of Policy Development and Research. Fair Market Rents. (2023-2024). Retrieved from <https://www.huduser.gov/portal/datasets/fmr.html>
- ²⁵ Feeding America. Retrieved from <https://www.feedingamerica.org/hunger-in-america/food-insecurity>
- ²⁶ Feeding America. (2021) Retrieved from www.FeedingAmerica.com