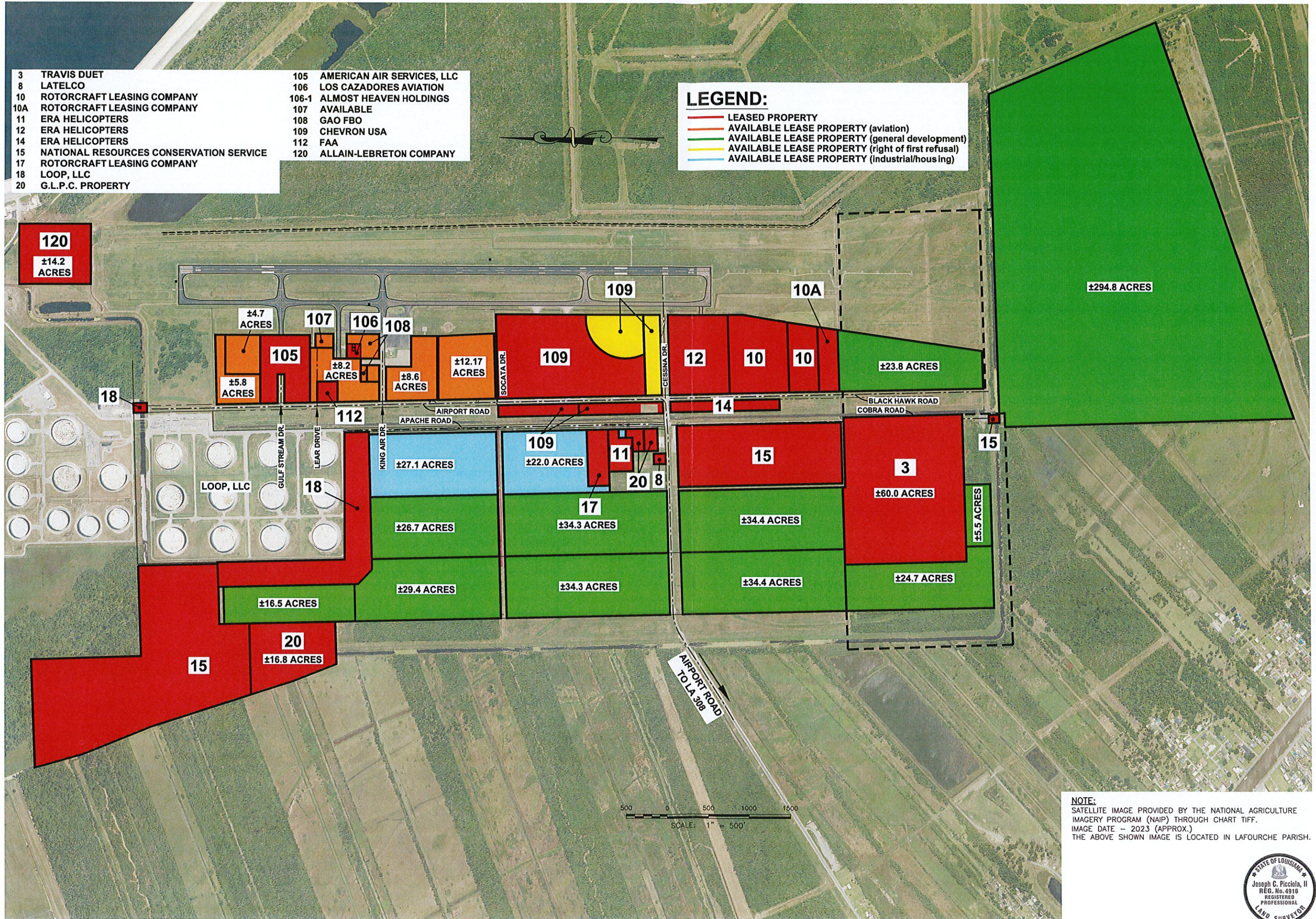


- |     |   |       |                            |
|-----|---|-------|----------------------------|
| 3   | TRAVIS DUET                             | 105   | AMERICAN AIR SERVICES, LLC |
| 8   | LATELCO                                 | 106   | LOS CAZADORES AVIATION     |
| 10  | ROTORCRAFT LEASING COMPANY              | 106-1 | ALMOST HEAVEN HOLDINGS     |
| 10A | ROTORCRAFT LEASING COMPANY              | 107   | AVAILABLE                  |
| 11  | ERA HELICOPTERS                         | 108   | GAO FBO                    |
| 12  | ERA HELICOPTERS                         | 109   | CHEVRON USA                |
| 14  | ERA HELICOPTERS                         | 112   | FAA                        |
| 15  | NATIONAL RESOURCES CONSERVATION SERVICE | 120   | ALLAIN-LEBRETON COMPANY    |
| 17  | ROTORCRAFT LEASING COMPANY              |       |                            |
| 18  | LOOP, LLC                               |       |                            |
| 20  | G.L.P.C. PROPERTY                       |       |                            |

**LEGEND:**

- LEASED PROPERTY
- AVAILABLE LEASE PROPERTY (aviation)
- AVAILABLE LEASE PROPERTY (general development)
- AVAILABLE LEASE PROPERTY (right of first refusal)
- AVAILABLE LEASE PROPERTY (industrial/housing)



REVISIONS:	REMARKS:
DATE:	
PICCIOLA & ASSOCIATES, INC.	
CIVIL ENGINEERS	
LAND SURVEYORS	
NAVAL ARCHITECTS	
MARINE ENGINEERS	
P.O. BOX 487	
CUT OFF, LOUISIANA 70345	
(850) 632-9786	
SOUTH LAFOURCHE	
LEONARD MILLER, JR. AIRPORT	
PRELIMINARY MASTER PLAN	
DESIGNED BY:	J.C.P.
DRAWN BY:	M.J.A.
CHECKED BY:	J.C.P.
DATE:	12/1/2025
SCALE:	AS SHOWN
SHEET NO.	1 OF 1

