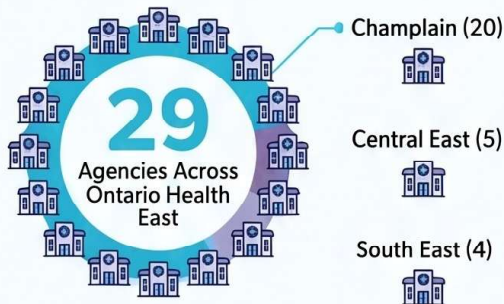


Apples to Apples Project:

Summarizing key findings for providers across Ontario Health East

SERVICE SCOPE & PARTICIPATION

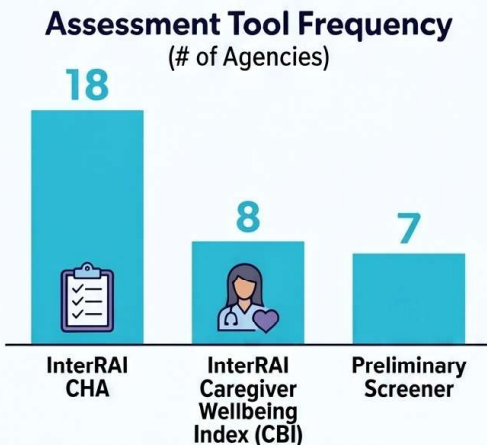


Comprehensive Staff-Led Programming

Professional staff (Coordinators, PSWs) lead recreational activities for frail adults and adults with a disability

Specialized Dementia & Early Onset Care

- 18 Agencies offer specialized dementia programming
- 7 provide support for early onset.



DELIVERY MODEL & REPORTING STANDARDS

Significant Reliance on Volunteer Support

Volunteers assist on-site at **28** of the **29** participating agencies to enhance delivery.

Standardized Assessment Requirement

24 agencies require a formal assessment, with the InterRAI CHA being the primary tool.

High Reporting Consistency

Attendance Units **Operating Days** **Unique Individuals Served**

Strong alignment in reporting across key metrics.