

FINVISION

AI-POWERED INVESTMENT RECOMMENDATIONS

PROBLEM STATEMENT

In recent years, driven by global economic growth, the stock market has seen a surge in participation from individual investors worldwide. However, traditional methods such as fundamental and technical analysis often fall short in capturing today's non-linear patterns and adapting to sudden changes. As a result, there's growing demand for more advanced, data-driven approaches that can respond in real time.

OUR SOLUTION

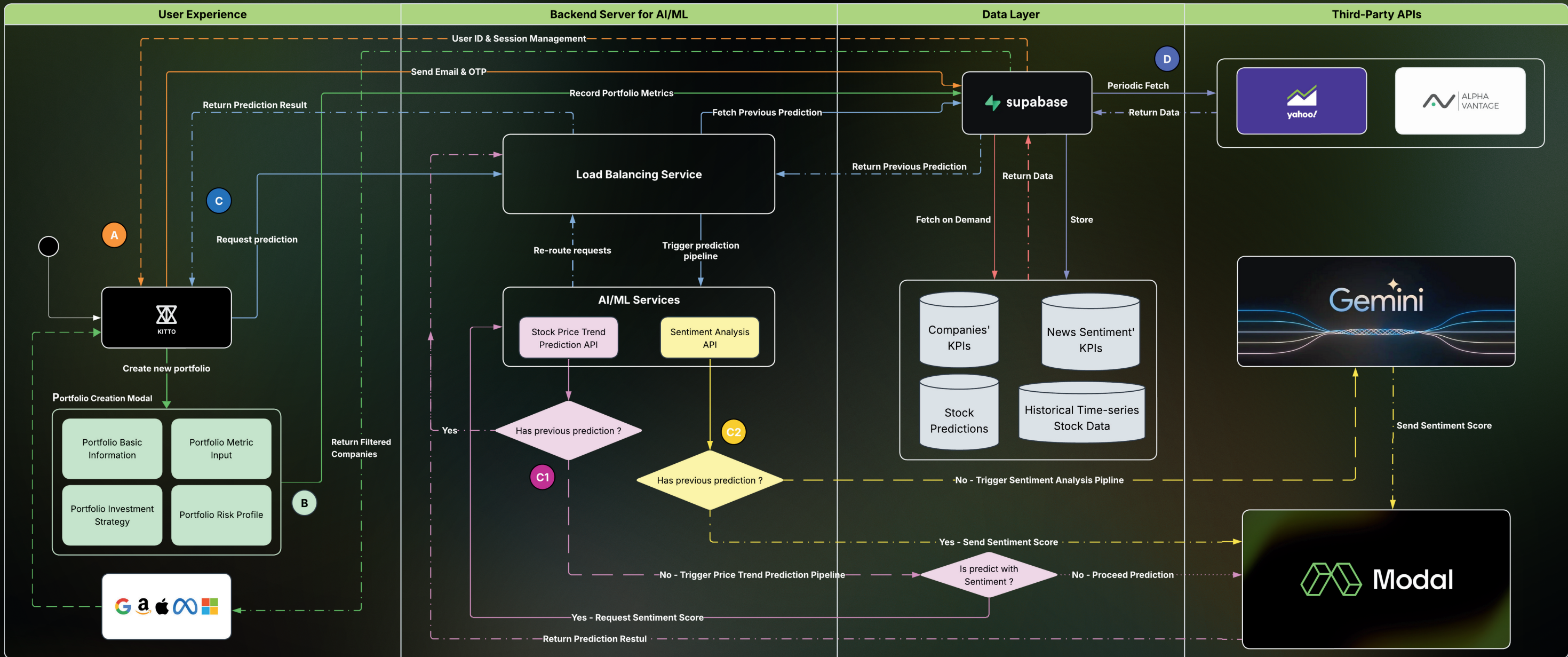
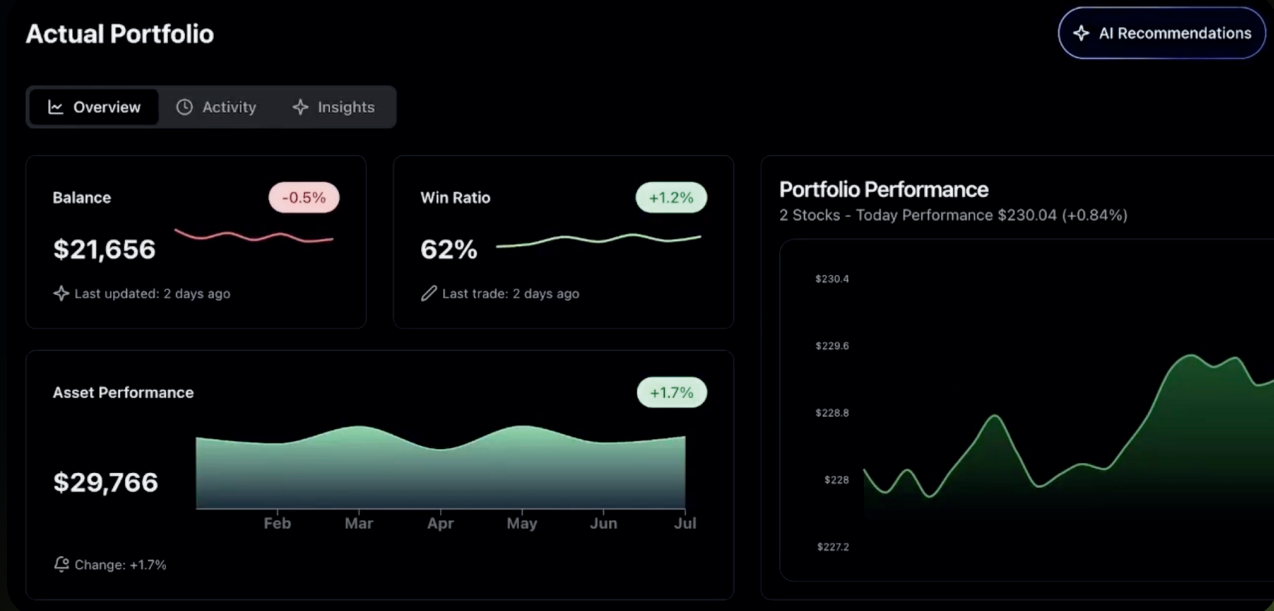
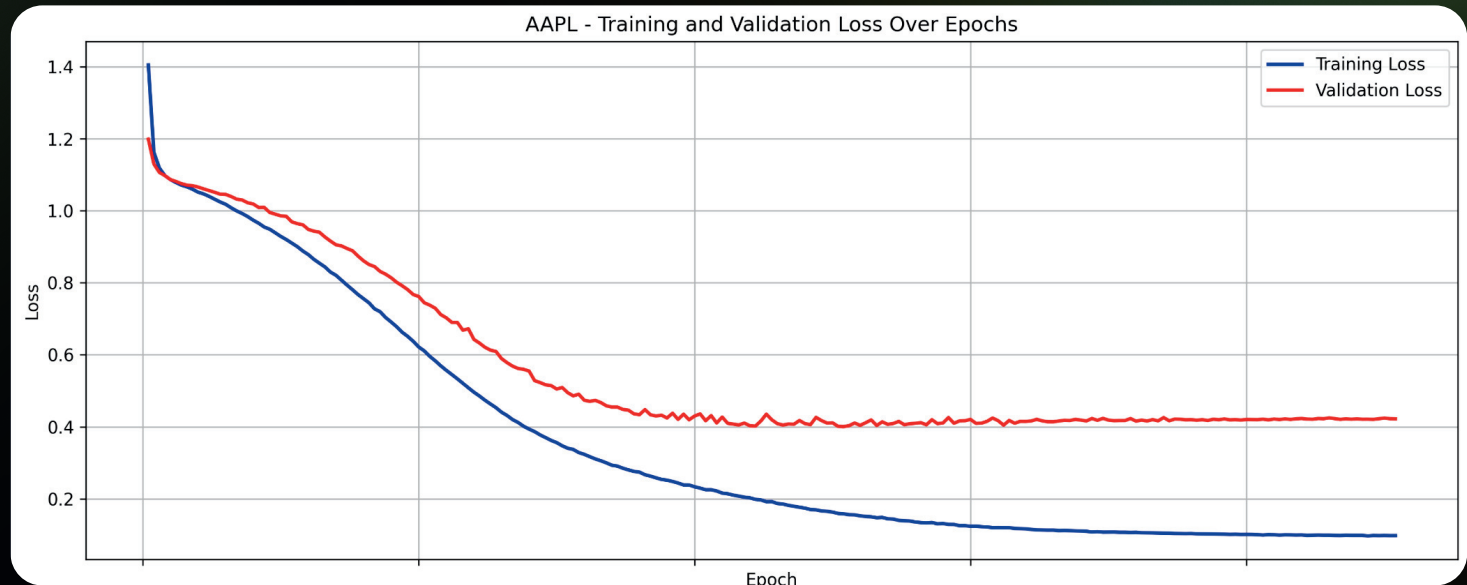
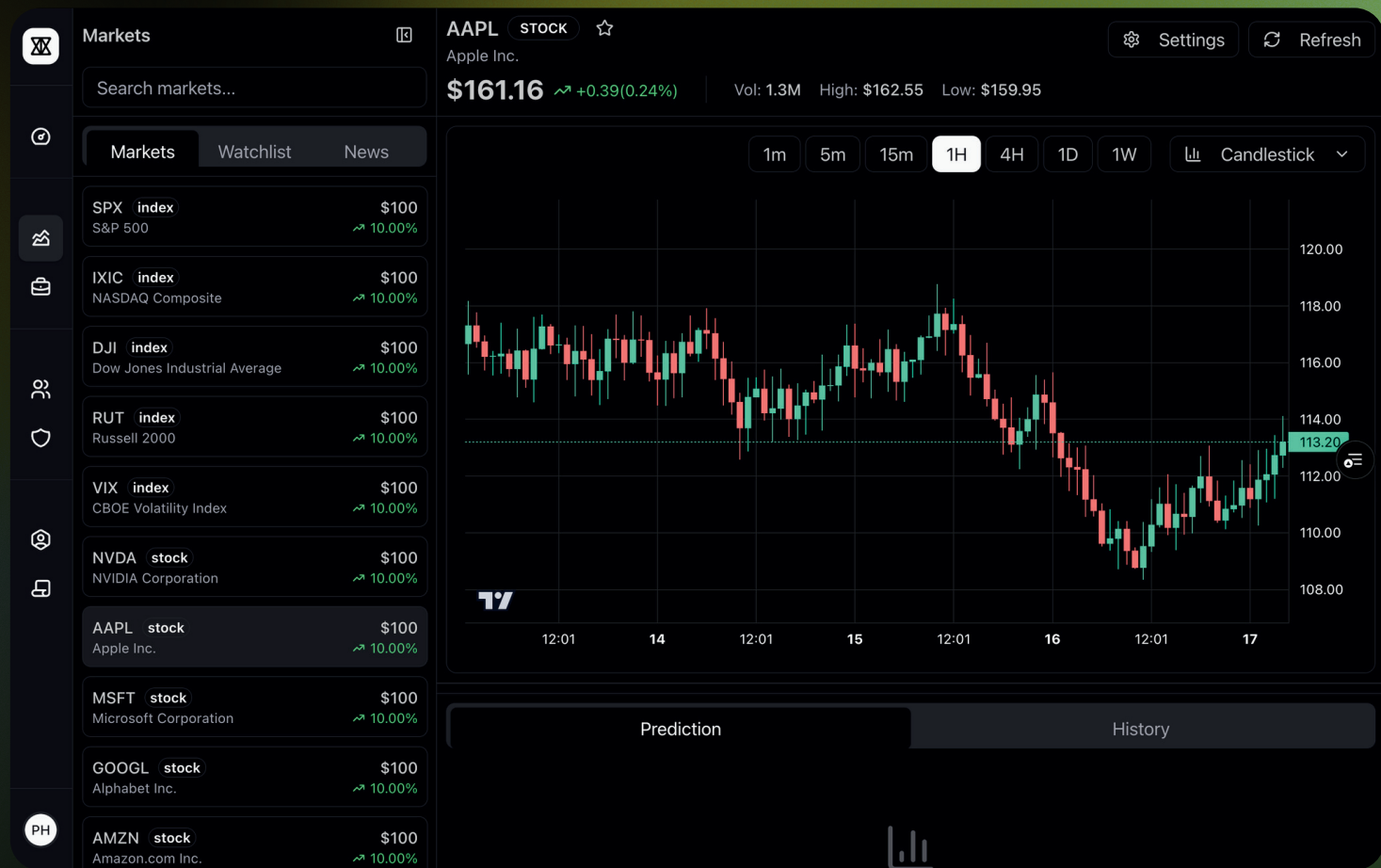
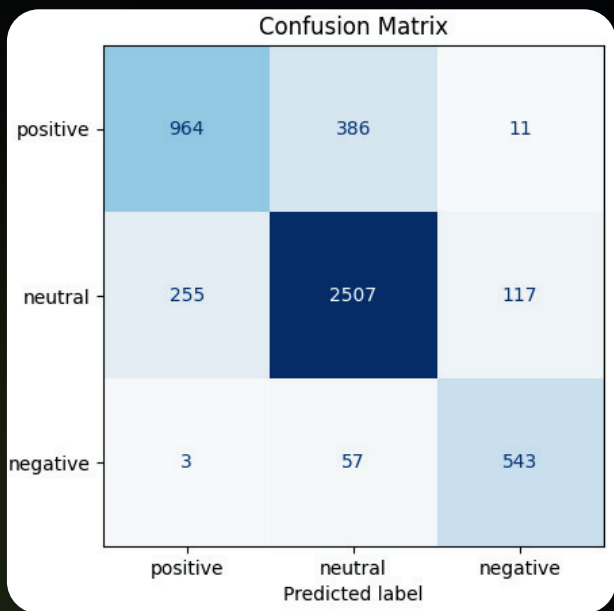
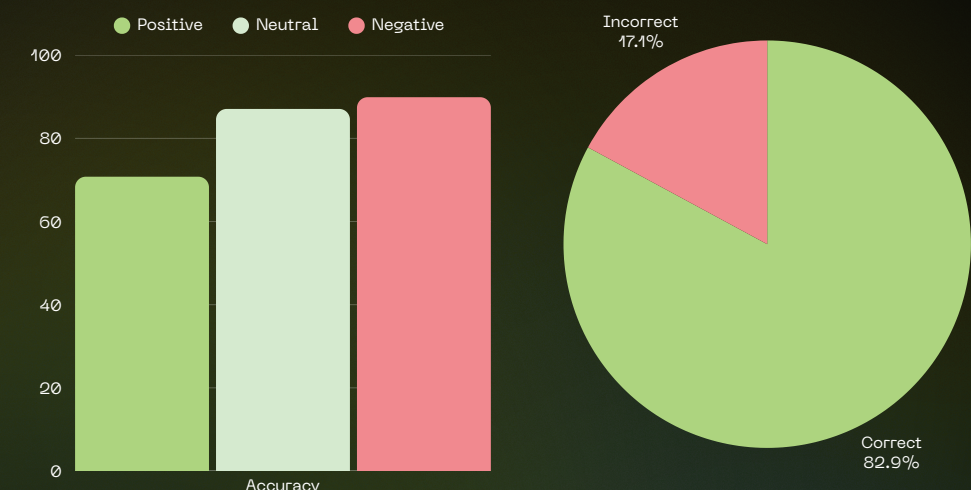
FinVision is a next-generation analytics platform that delivers a competitive edge through:

- Automated Data Processing:** Streamlines KPI filtering, document ingestion, and market data integration for transparent insights.
- AI-Powered Signal Clarity:** Reduces market noise to capture essential predictive signals with high accuracy.
- Gemini-Powered Sentiment Analysis:** Adds a crucial layer of qualitative insight by analyzing real-time market sentiment.
- Interpretable Forecasts:** Delivers clear, AI-driven predictions through intuitive and interactive dashboards.

CONCLUSION

The FinVision project progressed from a prototype to a functional financial analytics platform. A complete web application with authentication, portfolio management, and stock tracking was delivered. AI/ML pipelines using LSTM and Transformers, combined with Gemini-powered sentiment analysis, provided dual-layer insights, ensuring accuracy, interpretability, and reliable decision support for users.

NEWS SENTIMENT CATEGORIZATION 82.88% ACCURACY



RMIT SSET 2025C CAPSTONE SHOWCASE

DATE 18 SEPTEMBER 2025 TIME 09:30 AM - 11:30 AM LOCATION RMIT SGS SPORT HALL ZONE B - 63

SUPERVISORS

- DR. PHAM CHI THANH
- DR. TRAN NHAT QUANG
- DR. TRAN DUC LINH

STUDENTS

- DOAN HUU QUOC
- NGUYEN DINH VIET
- VO HOANG PHUC
- PHAN TRONG NGUYEN