

Notice of Conveyor Works, A413, London Road

February 2022 | www.hs2.org.uk

High Speed Two (HS2) is the new high speed railway for Britain. We are following Government and Public Health England (PHE) advice on working safely during the pandemic. The health and safety of our workforce and the communities we work within is our priority. If you have any questions about this, please contact our Helpdesk to find out more. You can sign up for regular updates in your local area at www.hs2inbucksandbox.co.uk.

What are we doing?

As part of our plan to reduce HGV traffic on the local road network, EKFB will be constructing a conveyor system to move excavated materials across the A413, London Road.

The conveyor system will be designed to take materials between two of our sites either side of the A413.

In preparation for the construction of the conveyor, we will be undertaking some localised vegetation clearance and creating an access point along London Road.

For the safety of road users and our staff we will require some overnight closures and daytime traffic management whilst these works are carried out.

When will these works take place?



Works on constructing the conveyor are expected to begin in February and continue through to July. During construction there may be times where we will need to introduce temporary traffic management, in the form of a full overnight road closure or two-way traffic lights, on the A413 London Road and Small Dean Lane.

When these dates are confirmed, we will update communities.

Over Easter, we will need to take a 52-hour, continuous possession of the network rail line. Shorter overnight possessions will also take place throughout the following weeks as we install a bridge and the conveyor across the Chiltern Rail Line.

If you have a question about HS2 or our works, please contact our HS2 Helpdesk team on 08081 434 434 or email hs2enquiries@hs2.org.uk



Notification



Duration of works

Works will commence from February through to July 2022.

Our construction programme with further details can be found on page 3.

Monday to Friday

8.00am – 6.00pm

Saturdays

8.00am – 6.00pm

Our contractors may be on site for one hour's start-up and shutdown either side of these times.

What to expect

We plan to start operating the conveyor from Summer 2022.

Some localised road closures for construction and vegetation clearance; please allow additional time for your journeys.

Some noise from plant and equipment used for the works.

What we will do

Minimise disruption from noise, dust and light for the community.

Look to open London Road as soon as practicable.

Notice of Conveyor Works, A413, London Road



Why are you using a conveyor system?

One of the main benefits for using a conveyor is to decrease the number of vehicles using the A413 to transport materials. In this case, we are expecting to reduce approximately **32,000** articulated dump truck (ADT) journeys, moving an estimated **640,000m³** of materials. That's about the capacity of 256 Olympic sized swimming pools.

Excavated materials will move between conveyor belts using a purpose-built chute. There are 'transfer points' where the conveyor system will turn a corner or make a slight turn as it moves excavated materials. These will be fully enclosed and have noise reducing cladding.

You will not be able to see the conveyor belts from the ground. They will be fully enclosed with green panelling, to blend into the environment and surrounding vegetation.

How will you minimise disruption?

The conveyor is being designed to be compliant with the HS2 Environmental requirements which align with our commitments to minimise disruption to our neighbours.



Noise - There will be acoustic cladding in place to eliminate operational noise.

Dust - As a preventative measure the conveyor will be enclosed to minimise dust dispersal. Additionally, we will use dust suppression to dampen down materials where needed.



Light - We do not anticipate that light will shine towards local properties. The conveyor will have internal lighting only, illuminated during operating times.

Contact us - If noise, dust, or light become a concern to our neighbours, we will take measures to address these. Any queries should be raised with the HS2 Helpdesk.



When will construction begin?

Notification

From February 2022, we will begin our engineering works for the foundations of the conveyor as well as structures that will support the conveyor.



There will be three conveyor crossing points. One over Small Dean Lane, another crossing over the A413, London Road as well as a crossing over the Chiltern Rail line.

For safety reasons, the A413 London Road and Small Dean Lane will need to be temporarily closed while we lift the crossings into place. Small Dean Lane will stay permanently closed after these works but bridleway diversion is being constructed.

For reasons of safety, the construction over the Chiltern Rail line will be carried out overnight, under Network Rail possessions in April.

Construction of the conveyor is planned during core working hours. Some extended working hours will be required.

Construction programme summary

Date	Activity
February 2022*	<ul style="list-style-type: none">Vegetation clearance along the A413 in locations for crossing points to accommodate the structure and foundations constructed.Break from highway to establish access points from A413 – daytime lane closures expected on London Road.
March 2022*	<ul style="list-style-type: none">Small Dean Lane Closures.Break from highway continues to be established utilising existing access points where possible.Construct conveyor trestle foundations and install modular Mabey bridge abutments.
April 2022*	<ul style="list-style-type: none">Construction and installation of trestle foundations and Mabey bridge abutments continues.Progression of conveyor across London Road- expect overnight road closures on London Road.Installation of Mabey bridge and conveyor across the railway line - expect full closure of network rail line.Installation of the conveyor across Small Dean Lane.
May – July 2022*	<ul style="list-style-type: none">Installation ground mounted conveyor sections.Installation of electrical and mechanical conveyor systems, including hopper.The conveyor is expected to be operational from July.

*Dates can be subject to change due to ground conditions and other factors beyond our control.

Notice of conveyor works, A413, London Road

Notification



www.hs2.org.uk

Where will the conveyor be located?

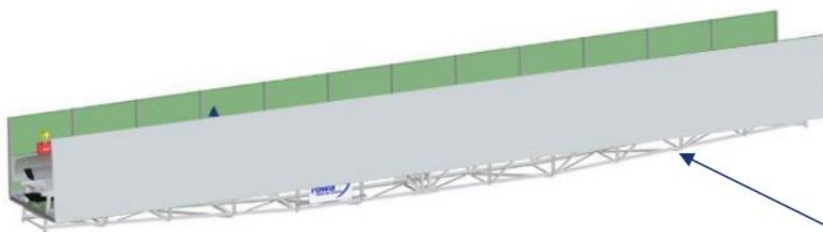
The map below, shows where the conveyor will cross Small Dean Lane and continue over the A413, London Road to our site adjacent to Small Dean Lane. From here the material will be stockpiled and is expected to be re-used in future works.



When will the conveyor operate?

Times of operation may vary due to the nature of the works but are expected to be during our core working hours, 8.00am to 6.00pm.

However, there may be periods when the belts are not running, for example during periods of maintenance of the conveyor itself.



This is a typical example of what a conveyor section will look like.

Contact our HS2 Helpdesk team on **08081 434 434**

What else is happening in your area?

A413 Future works

This year will see the progression within two main areas of work around the Small Dean area in Wendover.

This will include the start of the viaduct structure which will eventually span the A413, and the re-alignment of London Road to allow for the piers of the viaduct to be constructed.

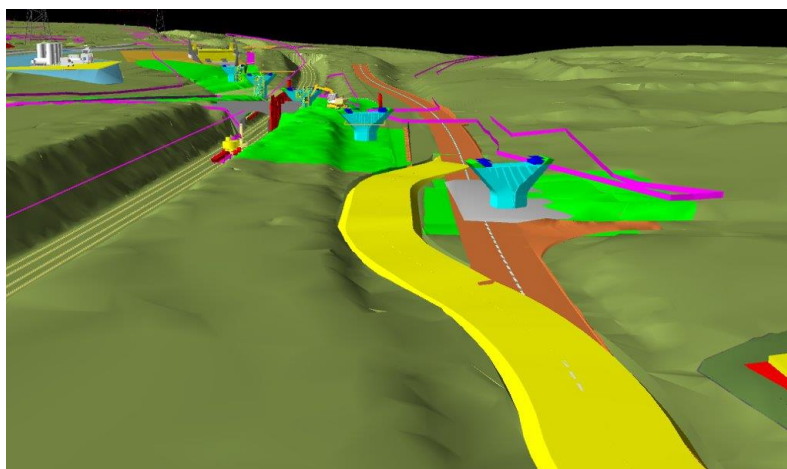
Utility diversions, excavations and piling platforms will be starting from Spring 2022 with the first phase of the A413 re-alignment starting this summer continuing into 2023. The build up towards the final viaduct launch across the road is anticipated for 2024.

The conveyor belt will feed into this operation to allow for the easy movement of materials with minimal disruption outside of our works area.

We will be communicating further on in the year the detail around these works, what to expect and how it will affect you as a resident or road user, so please visit the HS2 website where you can find information regarding the works that will be happening and sign up to our email notifications for the advanced works notices.



This computer-generated image (CGI) shows the design and span of the Small Dean viaduct and the new alignment for the road.



This CGI depicts the new road alignment in yellow and pier locations against the existing road layout. The front pier you can see sits on the current A413.

Keeping you informed

We are committed to keeping you informed about work on HS2. This includes ensuring you know what to expect and when to expect it, as well as how we can help.

Residents' Charter and Commissioner

The Residents' Charter is our promise to communicate as clearly as we possibly can with people who live along or near the HS2 route.
www.gov.uk/government/publications/hs2-residents-charter

We also have an independent Residents' Commissioner whose job is to make sure we keep to the promises we make in the Charter and to keep it under constant review. Find reports at:
www.gov.uk/government/collections/hs2-ltd-residents-commissioner

You can contact the Commissioner at:
residentscommissioner@hs2.org.uk

Construction Commissioner

The Construction Commissioner's role is to mediate and monitor the way in which HS2 Ltd manages and responds to construction complaints. You can contact the Construction Commissioner by emailing:
complaints@hs2-cc.org.uk

Property and compensation

You can find out all about HS2 and properties along the line of route by visiting:
www.gov.uk/government/collections/hs2-property
Find out if you're eligible for compensation at:
www.gov.uk/claim-compensation-if-affected-by-hs2

Holding us to account

If you are unhappy for any reason you can make a complaint by contacting our HS2 Helpdesk team. For more details on our complaints process, please visit our website:
www.hs2.org.uk/how-to-complain

Contact Us

Contact our HS2 Helpdesk team all day, every day of the year on:

 Freephone **08081 434 434**

 Minicom **08081 456 472**

 Email **hs2enquiries@hs2.org.uk**

Write to:

FREEPOST

HS2 Community Engagement

Website **www.hs2.org.uk**

To keep up to date with what is happening in your local area, visit:
www.hs2inyourarea.co.uk

Please contact us if you'd like a free copy of this document in large print, Braille, audio or easy read. You can also contact us for help and information in a different language.

HS2 Ltd is committed to protecting personal information. If you wish to know more about how we use your personal information please see our Privacy Notice
<https://www.gov.uk/government/publications/high-speed-two-ltd-privacy-notice>

Reference number: HS2-MW-EK-Ph1-Ar-Ce-C1-Traf-4-16/11/2021
1MC12-EKF-IN-NTE-CS04-000035

High Speed Two (HS2) Limited, registered in England and Wales.
Registered office: Two Snowhill, Snow Hill Queensway, Birmingham B4 6GA.
Company registration number: 06791686. VAT registration number: 888 8512 56.