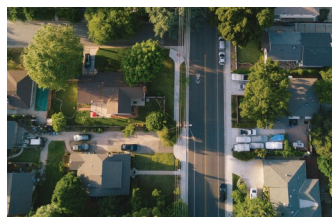




Save money & make time for yourself **with a better commute.**

Commute with Enterprise makes it easy to share a ride to work on your schedule. It works a lot like a carpool, except you'll share a ride in a recent-model SUV or van from Enterprise, equipped with amenities and features to make your ride to work a more enjoyable experience.



Why Commute with Enterprise?

- **Savings:** In 2024, riders who chose to vanpool with Enterprise saved an average of \$10k/year¹.
- Commuters traveling in or out of the following areas may be eligible for \$600 in transit subsidies. Crawford & Venango County
- **Flexibility:** Change your schedule or your commitment month-to-month.
- **Reliability:** Recent-model vehicles and local support.
- **Peace of mind:** Vehicle liability, physical damage coverage, 24/7 roadside assistance & routine maintenance included.
- **Impact:** 409,000 TONS of Co2 eliminated in 2023². Measure your impact on a custom dashboard.

How it works:



- 1 **Enroll Online.**
Tell us where you're starting and where you're going.
- 2 **Choose your Schedule.**
Ride every day or just a few days a week.
- 3 **Select a Vanpool.**
We'll show you options that match your location & schedule.
- 4 **Ready to Ride.**
Your tools for day 1 and beyond are online or in our mobile app.
- 5 **Sit back & Relax.**
Or volunteer to take your turn driving.

Learn more at
CommuteWithEnterprise.com/HowItWorks

Contact me to get started!

Bill Whiteside

william.whiteside@em.com

717-725-5406



1. Estimates based on 2024 Commute with Enterprise reporting, an average 5-day/ week commute and 2024 AAA costs associated with operating a vehicle including fuel, maintenance, and depreciation. Show me the Math. 2. Estimates based on 2024 Enterprise reporting and U.S EPA Calculation of Carbon tailpipe emissions. Assumes 5-day work week and participants previously drove alone. CommuteWithEnterprise.com/Showmethemath