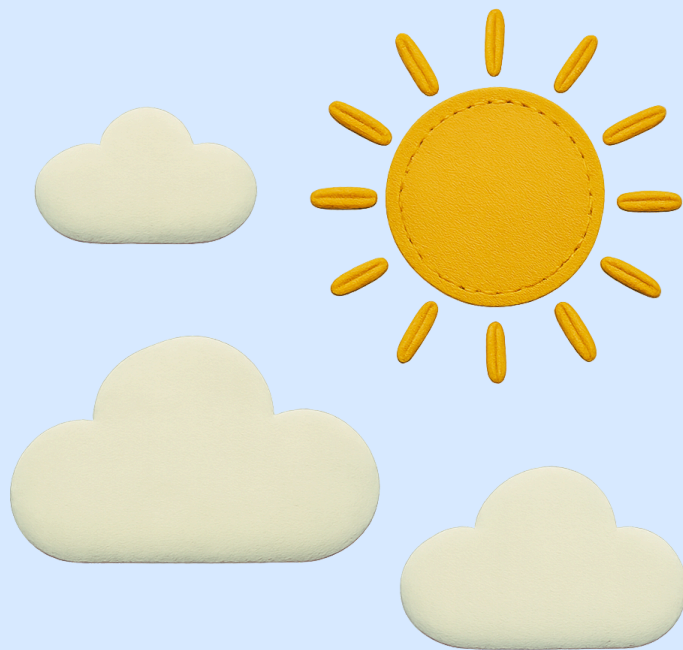




FELT HAPPY MARKET

# FOOD COURT SERIES

## Pancake Party Kit



# What's Included In Your **PANCAKE PARTY KIT**



2 Pancakes  
2 Bacon  
2 Sausage  
2 Eggs  
3 Raspberries  
3 Blueberries

1 Needle Threader  
3 Sewing needles  
4 Straight needles  
Stuffing  
Thread  
Needle Threader

## Sewing Instructions

### Step 1.



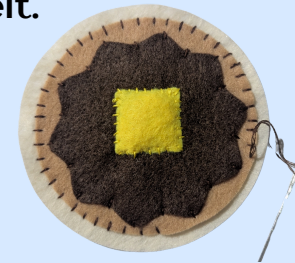
Using yellow thread, single stitch the square yellow felt onto the dark brown felt. Add a small amount of stuffing inside as you go.

### Step 2.



Using brown thread, single stitch the syrup piece onto the tan felt.

### Step 3.



Using brown thread, single stitch the design onto one piece of cream felt.

### Step 4.



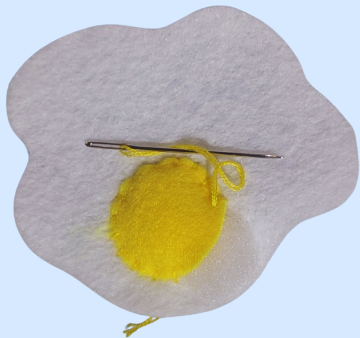
Place a second piece of cream felt on top. Using brown thread, blanket stitch around the edges, leaving a small opening. Add stuffing, then finish stitching to close it up.

# Bacon, Eggs, Sausage



Stitch brown piece onto one of the red pieces.

Add a second red piece to the back and blanket stitch together.



Add a yellow circle to one piece of egg. Single stitch around adding stuffing before closing.

Add a second piece of white egg to the back. Blanket stitch all the way around finishing the egg.



Fold the rectangle piece in half and blanket stitch along the long side.

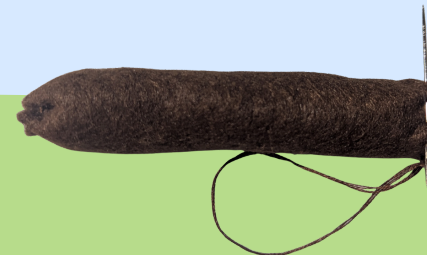


Turn the project inside out.

Running stitch around the top. Pull the thread tight cinching it closed.



Add stuffing



Running stitch around the bottom. Pull the thread tight cinching it closed.

# Raspberries



Fold the raspberry piece in half and blanket stitch together.



Turn the project inside out.



Running Stitch along the top edge and add stuffing.

Pull the Running Stitch tight. Close the top.



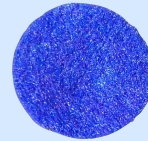
Bring your needle and thread to the bottom, then pull it all the way up through the center of your project.



Repeat the above step eight times or until desired look is achieved.



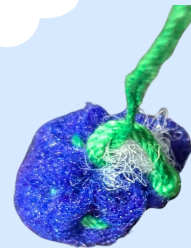
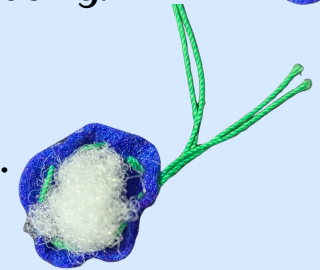
# Blueberries



Using green thread, Running Stitch around the top of the blueberry.



Add a little bit of stuffing.



Pull the Running Stitch closed.

Add the stem to the top and stitch it in place.

