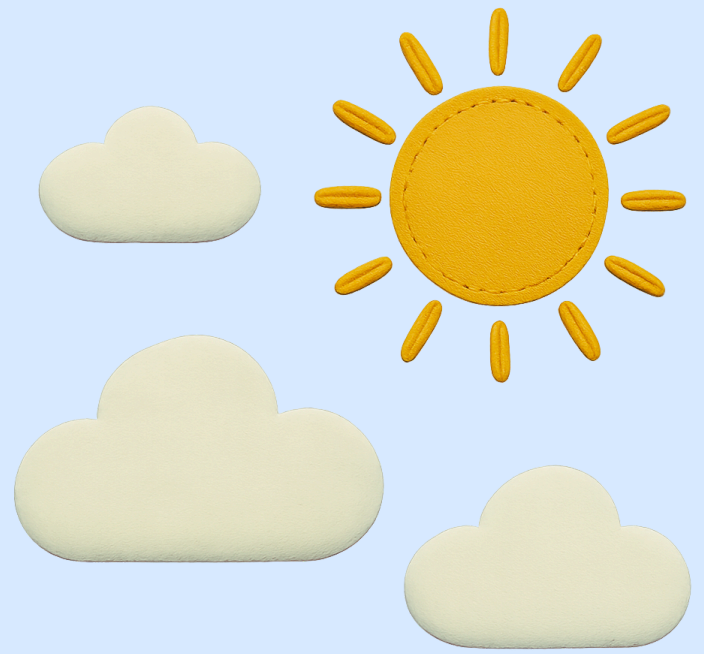




FELT HAPPY MARKET

FOOD COURT SERIES

Fountain Fun Kit



What's Included In Your FOUNTAIN FUN KIT

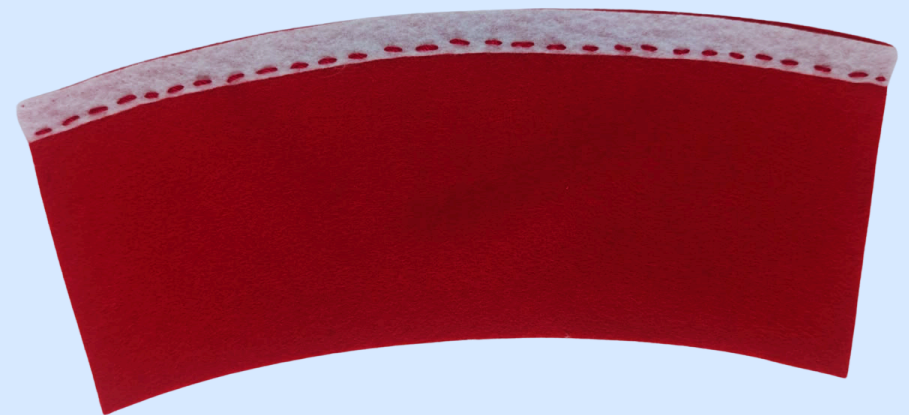


1 Fountain Drink
Stuffing
3 Sewing Needles

4 Straight Pins
Needle Threader

Sewing Instructions Decorate the Can

- Add the White Stripe
- Take the large red felt rectangle (cup body) and the long white stripe.
- Use a running stitch with red thread to attach the stripe near the bottom of the red rectangle.



Create the "Pop" Label

- Take the small red circle and white thread.
- Use a running stitch to sew the letters "POP" onto the circle.



Assemble the Front Decoration

- Center the white scalloped circle in the middle of the red rectangle (with the stripe already on it).



- Place the small red "POP" circle on top of the scalloped one.
- Use red thread to run a stitch around the red circle, sewing through all three layers.

Assemble the Can Body

Stitch the Cup Closed

- Fold the decorated red felt rectangle into a cylinder.
- Use a blanket stitch with red thread to sew the side closed.

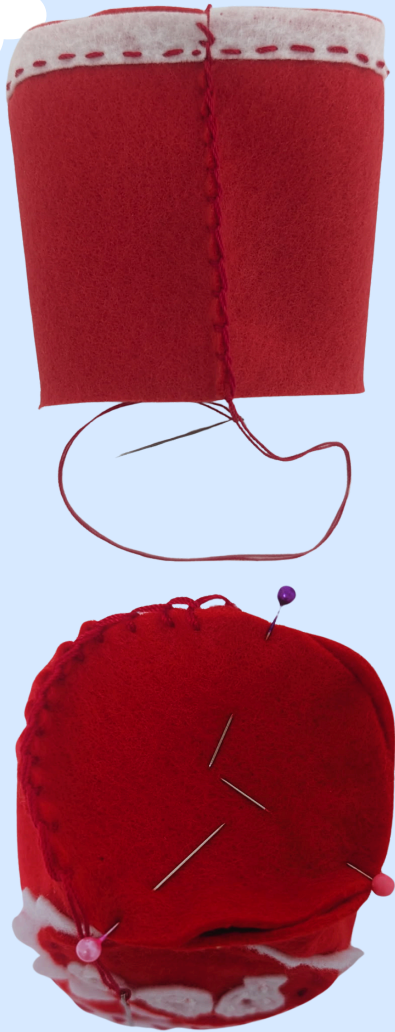
Stuff the Cup

- Gently fill the cup with stuffing to give it shape.



Add the Bottom

- Take the large red circle and blanket stitch it to the bottom of the cup using red thread.



Make the Straw

- Take the small white rectangle, fold it in half lengthwise.
- Use white thread to blanket stitch up the open side.
- Leave the needle and thread attached — you'll use it again soon.



Build the Top of the Can

- Use red thread to running stitch the small white circle to one of the remaining red circles.
- Then stitch that piece to the larger white circle, using a running stitch with red thread.



Attach the Straw

- Position the straw in the center of the top piece (the small white circle).
- Stitch the bottom of the straw down securely using the thread still attached.



Finish the Can

- Use a blanket stitch with red thread to attach the finished top to the top of your cup.