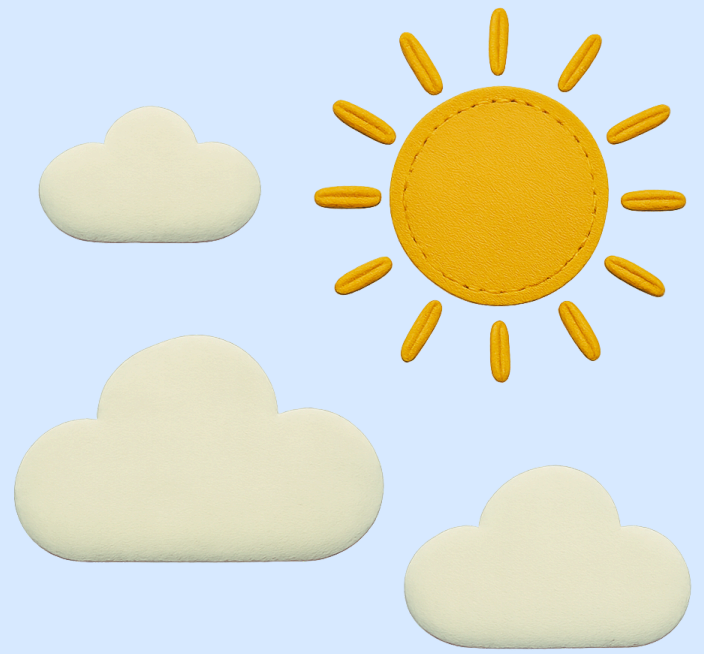




FELT HAPPY MARKET

FOOD COURT SERIES

Cotton Candy & Corn Dog Fun Pack



What's Included In Your COTTON CANDY & CORN DOG FUN PACK



1 Cotton Candy
1 Corn Dog
1 Corn Dog Holder
Stuffing

3 Sewing Needles
4 Straight Pins
Needle Threader

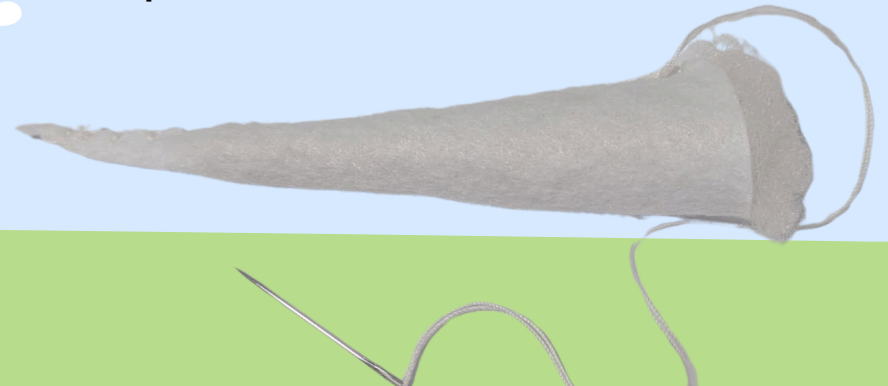
Sewing Instructions Cotton Candy



Make the cone:

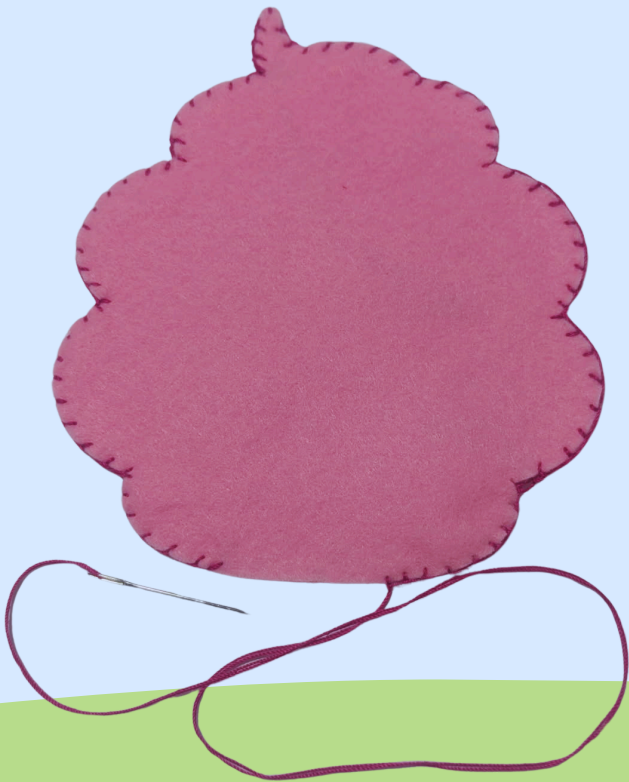
Fold the white felt rectangle in half lengthwise. Using white thread, blanket stitch along the long open edge to form a cone.

- Fill the cone with a generous amount of stuffing.
- Tip: Use a pen or pencil to gently push the stuffing all the way down.
- Once stuffed, set the cone aside. You'll attach it after completing the cotton candy top.



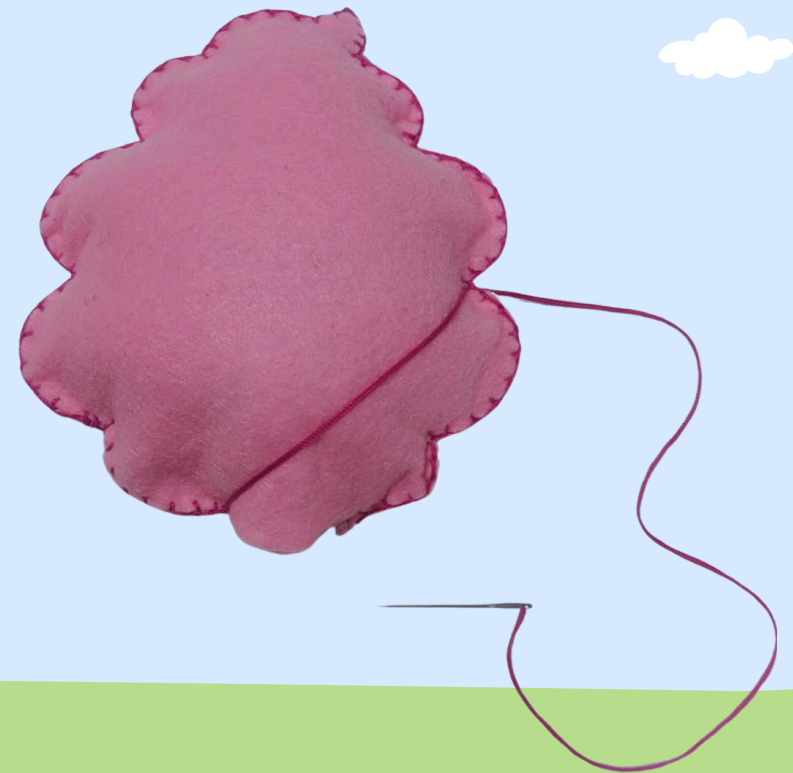
Create the Cotton Candy

- Take two pieces of the pink "cotton candy" felt and place them together.
- Using pink thread, blanket stitch all the way around the edges, leaving a 2-inch opening at the bottom.



Stuff the Cotton Candy

- Fill the cotton candy shape with stuffing until it's full and fluffy.
- Tip: Don't overstuff—leave it soft for a more realistic look!.



Add Texture Detail:

- Using the same pink thread, crisscross stitches across the front and back of the cotton candy to mimic the spun texture.



Attach the Cone:

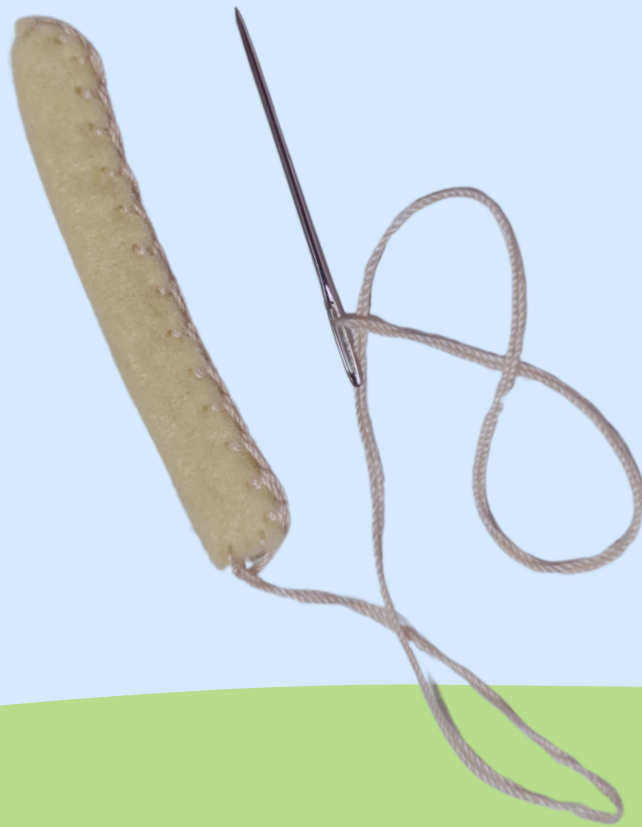
- Pin the stuffed cone into the opening at the bottom of the cotton candy.
- Using white thread, blanket stitch the cone to the cotton candy, sealing the opening and finishing the project.



Make the Corn Dog

Prepare the Base:

- Fold the cream felt piece in half to form the corn dog shape.
- Blanket stitch all the way around using brown thread, and set aside.



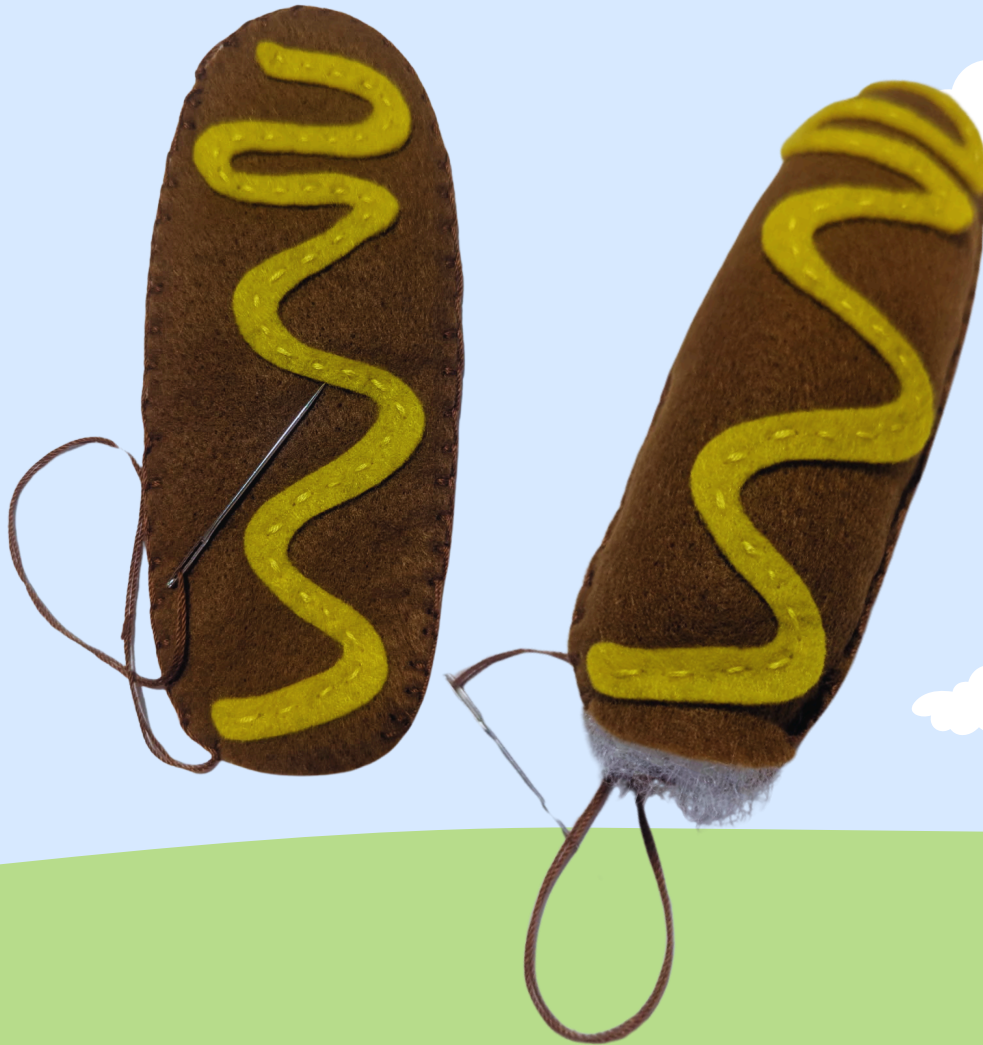
Add the Mustard:

- Arrange the yellow mustard squiggle on one of the corn dog pieces.
- Use yellow thread and a running stitch to attach the mustard.



Assemble the Corn Dog

- Place the second corn dog piece behind the one with mustard.
- Using brown thread, blanket stitch around the edges, leaving the bottom open.



Stuff & Add the Stick

- Fill the corn dog with stuffing.
- Insert the brown stick about ¼ inch into the bottom.
- Finish blanket stitching to close the bottom and secure the stick in place.

