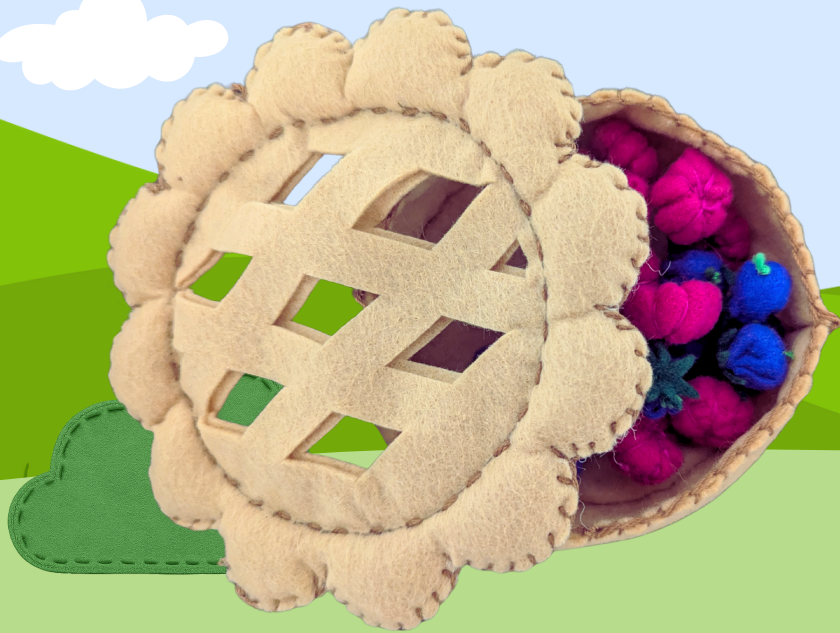




FELT HAPPY MARKET

BAKERY SERIES

BLUEBERRY & RASPBERRY PIE KIT



What's Included In Your BLUEBERRY & RASPBERRY PIE KIT



- 12 Raspberries
- 12 Blueberries
- Pie Crust
- 3 Sewing Needles
- 3 Straight Pins
- 1 Needle Threader
- Stuffing
- Thread

PIE TOP INSTRUCTIONS

Place the Circle:

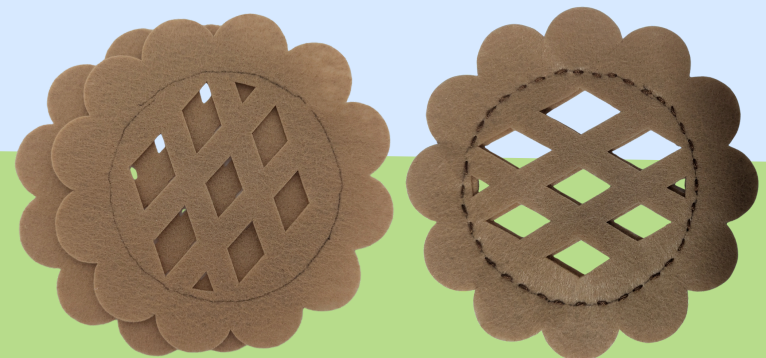
Position the circle piece on top of one top shell piece. Lightly trace around the circle to create a guide.



Attach Top Shells:

Place the second top shell on top of the first.

Use a running stitch to sew the two top shell pieces together around the line you just drew.



Stitch the Crust:

Use a blanket stitch to sew around the outer edge of the crust, adding stuffing as you go to create a soft, rounded shape.

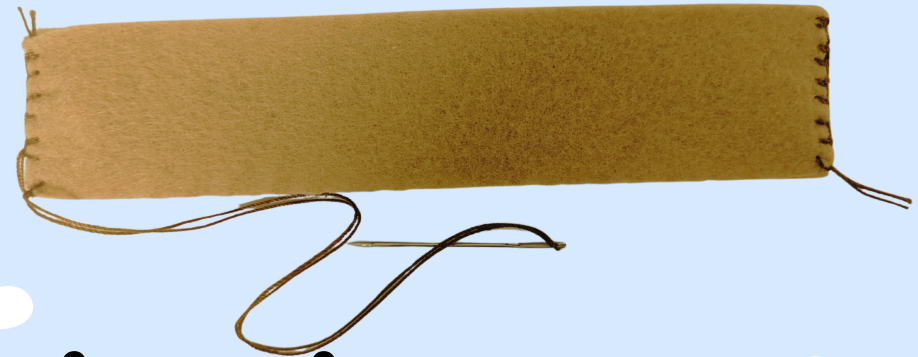


PIE BOTTOM INSTRUCTIONS

Prepare the Crust Sides:

Stack all four 7-inch pieces together.

Blanket stitch the ends of the stack together to join them.



Shape the Crust Ring:

Open the stacked strip into a ring so that two layers form each side of the crust wall.

Blanket stitch around the top edge of the ring to secure the layers.



Attach the Base:

Pin the circle piece to the bottom of the crust ring.

Blanket stitch all the way around to attach the bottom securely.



Fill your pie with the blueberries and raspberries, then place the top crust on and stitch it closed for a sweet handmade finish!



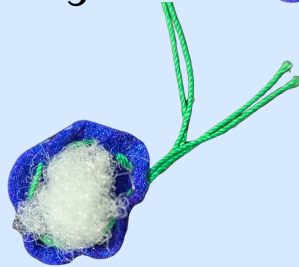
Blueberries



Using green thread, Running Stitch around the top of the blueberry.

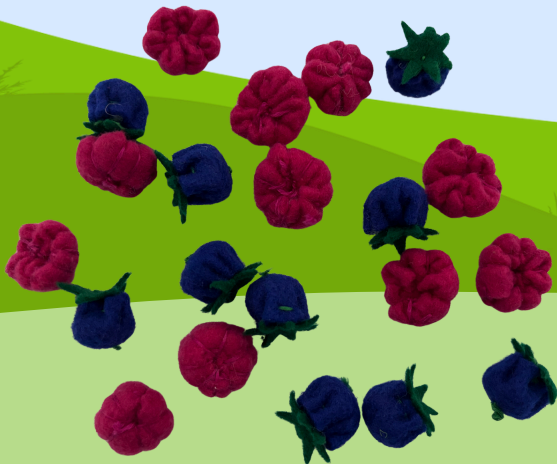
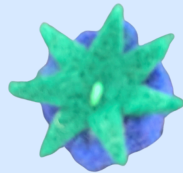


Add a little bit of stuffing.



Pull the Running Stitch closed.

Add the stem to the top and stitch it in place.



Raspberries



Fold the raspberry piece in half and blanket stitch together.



Turn the project inside out.



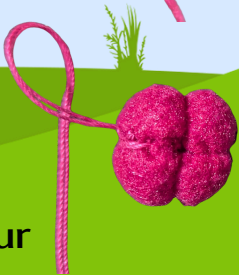
Running Stitch along the top edge and add stuffing.



Pull the Running Stitch tight. Close the top.



Bring your needle and thread to the bottom, then pull it all the way up through the center of your project.



Repeat the above step eight times or until desired look is achieved.

