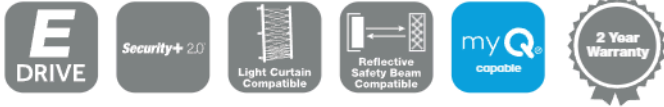


E-DRIVE

ROLLER SHUTTER OPERATOR FOR SPRING-BALANCED COMMERCIAL DOORS



KEY FEATURES

- Purpose-designed gearbox with a range of powerful motors.
- Multiple configuration options to suit an extensive range of applications.
- Electronic limits with Security +2.0 radio onboard for encrypted security.
- A comprehensive and modular range of accessories.
- Compatible with myQ smartphone control.*
- Includes opening entrapment prevention capability.



Product may differ slightly from image shown.

Control and manage your doors from anywhere with your smartphone. E-Drive with myQ connectivity utilises the latest logic and smart technology and builds upon Grifco's trusted legacy for traditional spring-balanced roller shutters, doors and grilles.

Regarded as the industry benchmark, E-Drive with myQ offers powerful unbeatable performance for commercial doors. The proprietary expandable logic enables exceptional versatility and adaptability on location.

What's in the Box?

Operator, Wall Control, Mounting Hardware

Information for Roller Shutters

All operators have a recommended maximum Roller Shutter area listed in the specification table. All recommended sizes are based on a "Standard Roller Shutter".

- The Shutter is correctly spring-balanced.
- The Shutter has max 1mm x min 100mm slats, with a Diameter 150mm drum for shutters max 36m², or Diameter 200mm drum for shutters 36 - 50m².
- The Shutter has no wind-locks.
- A sprocket ratio $\geq 4:1$ is used.

OPTIONAL ACCESSORIES

**Expansion Board
With High Lid**
EB1



**Monitored Safety
Beam Kit**
GPS15RK



**Monitored Light
Curtain System**
GLCPS



myQ Gateway
G828AU



myQ Capable*



APP AVAILABLE ON:



Control from anywhere

Preset scheduling

Real-time notifications

Access control

* myQ Gateway and Grifco Entrapment Protection System required.

E-DRIVE

Model	Nominal Power	Rated Current	Voltage	Phase	Max. Door Size	IP Rating	Duty	No Neutral (N)	Pre-Wired (P)	IP55 (W)	Clutch (C)
-------	---------------	---------------	---------	-------	----------------	-----------	------	----------------	---------------	----------	------------

E-Drive Operator | Low Cycle | Three Phase 415V

ML6053	0.37kW	0.5Hp	1.6A	415V	3ph	18m ²	IP44	LC-10
ML6103	0.75kW	1.0Hp	2.4A	415V	3ph	36m ²	IP44	LC-10
ML6153	1.10kW	1.5Hp	2.9A	415V	3ph	50m ²	IP44	LC-10

E-Drive Operator | Low Cycle | Single Phase 240V

ML6051	0.37kW	0.5Hp	3.5A	240V	1ph	18m ²	IP44	LC-10
ML6102	0.75kW	1.0Hp	6.0A	240V	1ph	36m ²	IP44	LC-10

E-Drive Operator | High Cycle | Three Phase 415V

MH6103	0.75kW	1.0Hp	2.0A	415V	3ph	30m ²	IP44	HC-30
MH6153W	1.10kW	1.5Hp	2.9A	415V	3ph	50m ²	IP55	HC-30

E-Drive Operator | High Cycle | Single Phase 240V

MH6102	0.75kW	1.0Hp	4.4A	240V	1ph	30m ²	IP44	HC-30
--------	--------	-------	------	------	-----	------------------	------	-------

E-Drive Operator | Low Cycle | Three Phase 415V | Smoke Baffle Feature

ML6103SBF	0.75kW	1.0Hp	2.4A	415V	3ph	36m ²	IP44	LC-10
ML6153SBF	1.10kW	1.5Hp	2.9A	415V	3ph	50m ²	IP44	LC-10

E-Drive Operator | Low Cycle | Single Phase 240V | Smoke Baffle Feature

ML6102SBF	0.75kW	1.0Hp	6.0A	240V	1ph	36m ²	IP44	LC-10
-----------	--------	-------	------	------	-----	------------------	------	-------

When ordering please specify an "L" or an "R" at the end of every part number.
MCB's with Smoke Baffle feature are available for E-Drive retrofit.

OPTIONAL UPGRADES

-	-	-	-
+	+	-	+
+	+	-	+
-	✓	-	-
-	✓	-	+
+	+	+	+
+	-	-	-
-	✓	+	+
-	-	-	-
-	-	-	-
-	✓	-	+

When ordering please specify the appropriate abbreviation (found above) before the "L" or "R" handling. For example ML6051WR

✓ As standard + Optional Upgrade - Not available

Model	Nominal Power	Rated Current	Voltage	Phase	Max. Door Size	IP Rating	Duty
-------	---------------	---------------	---------	-------	----------------	-----------	------

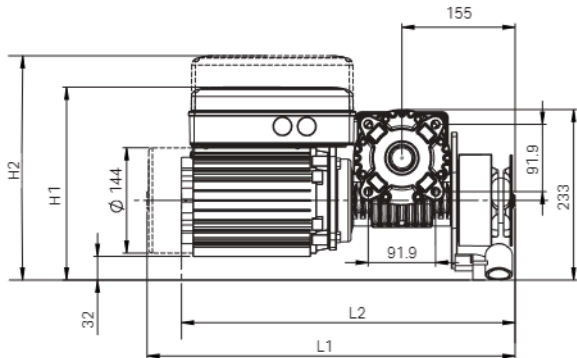
E-Drive Operator | Low Cycle | Monitored Safety Beams | Transmitters

ML6103RO	0.75kW	1.0Hp	2.4A	415V	3ph	36m ²	IP44	LC-10
ML6102RO	0.75kW	1.0Hp	6.0A	240V	1ph	36m ²	IP44	LC-10

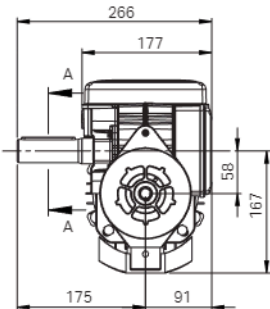
Kit includes E-Drive Operator, Wall Control, Monitored Safety Beams and 2 x Wireless Keyring Transmitters

Dimension Drawing

Reference	Dimension (mm)	Specification for
L1	503	Single Phase E-Drive Models
L2	456	3 Phase E-Drive Models
H1	263	Overall Height (Low Lid)
H2	307	Overall Height (High Lid)



Product may differ slightly from image shown.



Left hand model configuration shown

