



Colorbond®

create

From the  
drawing board

TRENDS IN HOME DESIGN

Colour confident

COLOUR AS A DESIGN TOOL

Build a home  
to suit your life

LIFESTAGES + LIFESTYLES



**CREATE, BROUGHT TO YOU BY COLORBOND® STEEL**, is designed to help guide you through the creative process of building your home. Of course, building is itself a practical process. That's a reality to be respected, never neglected. Always best though, to build any structure, and especially a home, on a solid foundation of **INSPIRATION**. That's what gives it soul; what makes it a living place.

The following words and pictures will help you lay that foundation in your mind. **CREATE** is a resource. And a reminder, that when we do our homework our home works. It's true the great challenge of building a home is exceeded only by the great rewards. 'The clearer I make my vision, the easier I'll make each decision' is a handy mantra to have. Especially given all the decisions you'll have to make!

001

**WHAT WAS IN, NOW IS OUT**

A home used to be an indoor place. The modern home is more and more outdoors. Patios and pergolas make better living rooms than living rooms when the weather allows it, which is most of the time in our land. Why sit inside an air-conditioned house when you can let the breeze and the shade do it for free? Why always cook in the house? There's a new saying: If you can't stand the heat, get the kitchen outside.



NIGHT SKY®



DUNE®

**TRENDS IN HOME DESIGN**

# From the drawing board

002

**THE INVIGORATING WHIMS OF CHANGE**

Rigid's great for foundations and floors, but a floor plan isn't something you have to be locked into. With open plan you are open to all sorts of possibilities. Sliding walls make living spaces flexible and adaptable to your moods and more. Presto, a guest room... where just this morning was, say, a generous study (the study's still there, it's just shrunk temporarily). Even day-to-day living can benefit immensely by 'versatiling' certain rooms. A kitchen can be turned into a homework haven simply - with a tuckaway table (and the screen monitored, discreetly).



CEILING COLOUR: CLASSIC CREAM™



WALLABY™



SURFMIST®



003

**SUSTAINABILITY AND MAINTAINABILITY**

An environmentally friendly home is good for the planet. A home that's a friendly environment is good for the family. Is it too much to wish for both? Yes, if you just wish. But not if you plan. Sustainability trends are driving home design, from the roof down. The best of them go hand in hand with low-maintenance so that the drain on the planet, and on your time, is reduced.



004

**ARCHITECHNOLOGY**

With modern building products benefiting from accelerating technological advances, design norms are less 'the norm'. The collaboration between architects, building and industry technologists, each inspiring the other, has never been greater. There's a new freedom to create bold new structures, or to incorporate grand new enhancements to existing designs.



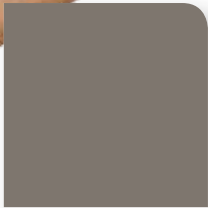
005

**A PLACE THAT'S A PLACE FOR EVERYTHING**

Storage as an afterthought isn't storage, it's clutter or worse - it's chaos. Those designers that are especially creative, create space. In the garage, by thinking of it as a storage room - one that just happens to also accommodate a car or two. In the roof, by re-thinking it as an easily-accessible attic. In the yard, with a shed that doubles as a garden feature. Storage is the greatest luxury, and having more than you need is blissfully therapeutic.



ROOF COLOUR: CLASSIC CREAM™



GULLY™

006

**SOMETHING OLD, SOMETHING NEW**

Intriguing, isn't it, how an old house - or church, factory, woolshed, whatever - when blended by a skilful architect with new materials can look and feel more modern than anything 'futuristic' ever will. The respectful recycling of bygone craftsmanship is a perennially contemporary idea that can give authentic character to a home.



ROOF COLOUR: WOODLAND GREY®

007

**THINKING OUTSIDE THE TRIANGLE**

Picture a roof in your mind's eye and it's easy to see the triangle you drew in kindergarten. A classic form, for sure, and now all the more beautiful thanks to colour liberation. But a roof can simply lie flat and let the rest of the structure speak. Or it can soar in shapes that make the clouds above quite envious. No longer do the traditionalist rules in architecture and design trends apply. The out-of-the-ordinary is now becoming common place. Welcome audacity.



008

**THE RESILIENT RESIDENCE**

Extreme weather and extreme weather events have given weatherproofing your home a new meaning. For peace of mind, ensure your roof is capable of withstanding what mother nature throws at you. For keeping cool in our hot summers, a roof that reflects a good deal of heat is a good idea. Also a good deal itself, given rising energy costs.



**O**F ALL THE ELEMENTS OF DESIGN, colour is the most powerful and personal. Colours are, by nature, an extension of your personality. Subtle. Bold. Cool. Warm. An expression of one's self.

Subconsciously, colour can alter our perceptions, moods and emotions. Hues and tints enhance our surroundings – harmonising or contrasting – to delight our senses. So when it comes to your home design, choosing colour can be a very exciting prospect and it's something that you want to get right.

The COLORBOND® steel colour palette is designed to allow you to confidently express yourself. Choose from 22 classic and contemporary colours; each enduringly fashionable, each inspired by the landscapes in which your roof will sit. Each hue, shade, tint and tone an expression of your style and personality.

Start at the top. Your roof is one of the largest, most visible surfaces of your home. With an inspiring palette to choose from, COLORBOND® steel gives you the ability to create the right colour scheme. Your home, your colours, your choices.

# Colour confident



BASALT™

**NEUTRAL & GREY COLOURS** continue to be popular amongst architects, designers and builders. Light, crisp and clean, neutral and grey colours bring a roof to life and make it appear more expansive. They're also worth considering when you're choosing a colour with energy-efficiency in mind. Consider COLORBOND® steel in Surfmist®, Dune®, Shale Grey™ or Evening Haze®.



MANOR RED®



**TRADITIONAL COLOURS** are immune to the vagaries of fashion. They are design classics that are probably more at home on traditional buildings than cutting edge contemporary design. COLORBOND® steel in Classic Cream™, Cottage Green® and Manor Red® are colours that have stood the test of time.



IRONSTONE®

**DARKER ROOFS** add depth and drama to a colour scheme. They can bring a striking urban style to your home. Consider COLORBOND® steel in Monument®, Basalt™ and Ironstone®.



**INSPIRATIONAL.** From our mountains to the outback, from creek beds to beaches, COLORBOND® steel captures the light and energy that makes Australia's colours so unique. Each colour has been designed with you in mind, and the design trends that influence your style. Each inspired by Australia's own magnificent backyard, and designed for Australian homes and the array of land and city scapes in which they proudly stand. Presented in two sweeping palettes - **CLASSIC** and **CONTEMPORARY** - let COLORBOND® steel inspire your colour choices.

Classic

PURE



CLASSIC CREAM™



PAPERBARK®



WOODLAND GREY®



MANOR RED®



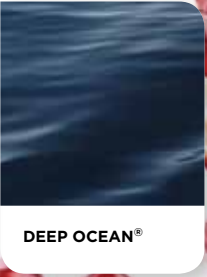
NIGHT SKY®



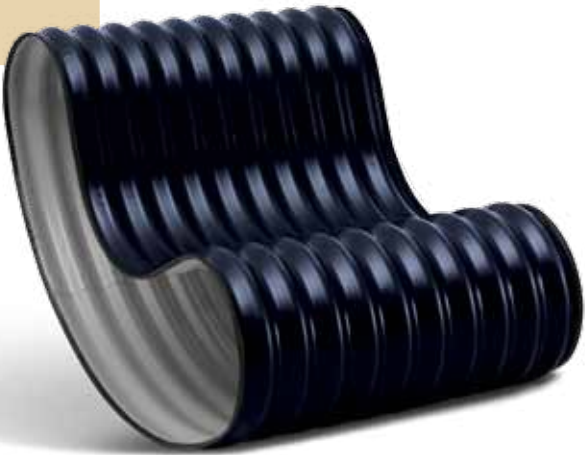
PALE EUCALYPT®



COTTAGE GREEN®



DEEP OCEAN®



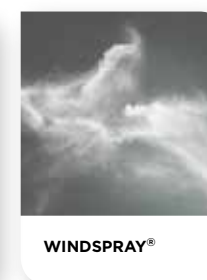
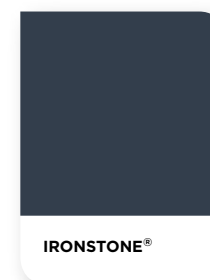
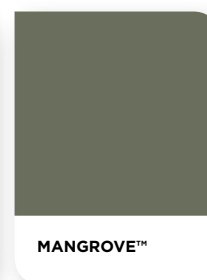
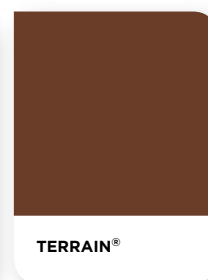
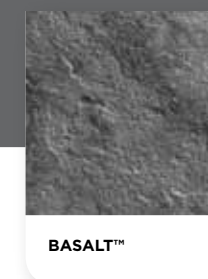
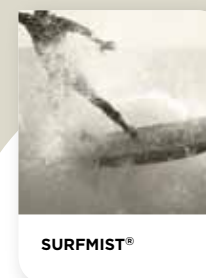
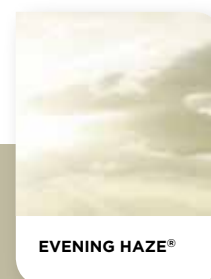
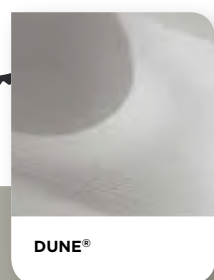
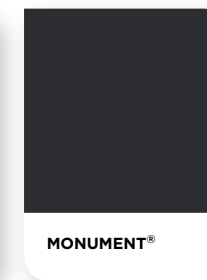
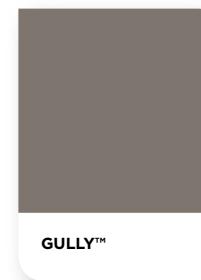
A fresh take on tradition for those who love a timeless palette and the enrichment it brings to home and life.





# Contemporary

This refreshing, nature-inspired palette is infused with a contemporary sensibility that transcends the expected.

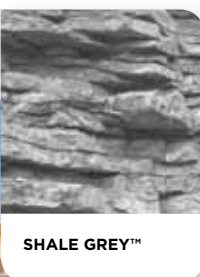


**YOUR COLORBOND® STEEL COLOUR CHOICE** can inspire the colour scheme for your entire home. So whether you're leaning towards a **CLASSIC** or **CONTEMPORARY** palette, remember your colour choice should be informed not only by the mood you wish to create, but by the surrounding hues, and the range of light in which all the colours bathe.

You can then decide if you want your home to harmonise or contrast with its natural or man made surroundings. To hum softly or make a statement.



**T**RUE SUCCESS, it's been said, is to live your own life in your own way. There are many measures of that success – none of them metric, all of them personal. One of course is the home. To truly feel at home takes vision and planning, and years of purposeful dreaming. Whether it's a once-in-a-lifetime project, or you're a been-there veteran; whether you're choosing a home off the plan and then finding the land, or starting from scratch on your perfect patch; demolishing and rebuilding; or renovating... you're seeking to create one thing: *A haven for family and friends.* Otherwise you'd be building just a house, not a home.



SHALE GREY™

# Build a home to suit YOUR life



SHALE GREY™

**CHOOSE THE RIGHT COLOURS** and they'll work their spirit-lifting magic for years to come – without you even noticing. Choose robust, durable, quality materials and all you'll need to maintain at home is the harmony within. No small task for modern families given the pressures of work and school. But no task more fulfilling.



WINDSPRAY®



**DIFFERENT PEOPLE** will work and play and grow under your home's sheltering roof, lots of different people. Our kids become different people every few years. So do we (although less dramatically). Clever planning, and clever aesthetic and material decisions, will leave you free to enjoy those years ahead and not be confounded by unanticipated surprises. The right choices can add value to your most important asset and, more important still, to your life.



**1 LOOKS BETTER FOR LONGER** COLORBOND® steel, now with its 22 designer-colour palette and advanced paint technology provides a durable, baked-on paint finish that resists peeling, chipping and cracking, so the COLORBOND® steel features of your home – such as roofing, walling, guttering and garage doors – will look better for longer.



ROOF AND WALLS: COLORBOND® STEEL IN A RANGE OF COLOURS

**2 LEADING INNOVATION** For decades, COLORBOND® steel has been a popular choice for many Australian families. As a result of a commitment to being on the forefront of current and emerging building design demands and trends, COLORBOND® steel introduces Activate™ technology. This industry leading coating technology, enhances the protective coating of COLORBOND® steel's substrate, making COLORBOND® steel one of the world's toughest, most advanced building materials.



TERRAIN®



ROOF COLOUR: SURFMIST®

**3 TRIED AND TESTED** The legendary lifespan of COLORBOND® steel is the result of decades of performance-monitoring under some of Australia's harshest conditions. This happens at exposure testing sites across Australia. So you can be sure COLORBOND® steel is made for durability in Australian conditions.

## The sensible choice

**THE STAMINA OF COLORBOND® STEEL** is complemented beautifully with the charisma of colour, giving you the building material you need to create a lasting impression.



**4 SMALLER ENVIRONMENTAL FOOTPRINT** The introduction of Activate™ technology is also important for those choosing materials with sustainability in mind. COLORBOND® steel with Activate™ technology uses fewer metal resources and has an increased lifespan, compared to original COLORBOND® steel. The result is a smaller environmental footprint<sup>1</sup>. To learn more about Activate™ technology, simply visit [colorbond.com/activate](http://colorbond.com/activate)

**5 THERMAL COMFORT** Standard COLORBOND® steel colours include Thermatech® technology<sup>2</sup>. Thermatech® technology can be an effective way to reduce the energy load of your home through less reliance on air-conditioning, providing you with more comfort, using less energy<sup>3</sup>. It's nice to know your roof is doing its bit for your wallet... and the planet. To learn more about Thermatech® technology, simply visit [colorbond.com/thermatech](http://colorbond.com/thermatech)

**6 LOCATION, LOCATION** Whether you live inland, or by the coast, COLORBOND® steel has a colour or product to meet the needs that your home demands. Simply visit [colorbond.com/ultra](http://colorbond.com/ultra) to learn more about COLORBOND® Ultra steel, recommended for coastal and industrial environments.

**7 PEACE OF MIND** Relax. The increased performance provided by Activate™ technology allows BlueScope to offer greater warranty periods for COLORBOND® steel. To learn more about warranties simply visit [bluescopesteel.com.au/warranties](http://bluescopesteel.com.au/warranties)<sup>4</sup>



EVENING HAZE®

**Colorbond®**





PAPERBARK®

**THAT OLD IDEA** of bringing the outside in is skilfully being turned inside out. With rooms that are more at home in the garden than in the house itself, casual spaces for uncontained, unrestrained entertaining or blissful solitude. With technology's relentless encroachment, nature's the last thing we should shut out of our lives and our homes.



**CREATING AN OUTSIDE LIVING SPACE** that is an extension of your home doesn't have to be difficult. Your outdoor living design and chosen colour scheme can make your space an integrated and permanent architectural feature of your home. So be sure to consider your home style, design and colour when planning your outdoor space.



# Extend your indoors

# OUTDOORS



GULLY™



**DID YOU KNOW** the palette that's so popular with architects and builders is popular too with major paint companies, window, water tank and garage door companies? They match their colours to COLORBOND® steel colours. Roofing, fencing, gutters, sheds, walling, garage doors, fascia, water tanks – your home's exterior can all be colour co-ordinated to create a stunning effect, or the most tranquil of moods. Boldly mix and match, sensitively blend or be decidedly single minded.



**PATIOS AND PERGOLAS.** Whether it's an outdoor covered room, patio or pergola, COLORBOND® steel gives you the flexibility to create your ideal space. With its excellent spanning capabilities, requiring minimal posts and rafters, COLORBOND® steel is capable of meeting the demands of your design and creativity. The outdoor room might just become the most liveable and valued room in your home!

**GUTTERS AND DOWNPIPES** go hand in hand with a roof. Gutters and downpipes have an important job to do, not the least of which is adding character to your home.

These functional forms are as vital to completing the look and personality of a home as eyebrows are to a face. They need to fit and sit naturally, and colour is the number one way of achieving that. Colour that complements your roof. Or contrasts it. Or matches exactly. COLORBOND® steel allows the co-ordination that is essential to creating character.

**AND THEN THERE ARE FASCIAS.** Make a point of noticing them as you walk the streets because they can make or break a house. A fascia in COLORBOND® steel, always a statement of quality, can also be an expression of creativity.



WOODLAND GREY®





**A FENCE NEEDS TO BE PUT INTO PERSPECTIVE.** See it stretched out before you specify it. This linear shape should add to, never detract from, the home it surrounds. It should add to its surrounding by way of form, tone and colour. COLORBOND® steel can do this. With its design flexibility it can become a subtle, colourful shadow play. Beyond the form, there's the function. A COLORBOND® steel fence allows you to mark a boundary; to keep kids and other creatures in, or out; all whilst providing privacy in a beautiful way.

Beyond function, there's resilience. A fence has to weather every season, wet and dry, hot and cold. A tough fence is a good fence. You can be confident if you choose COLORBOND® steel for your fence.



FENCE COLOUR: WILLOW®

**COLORBOND® STEEL CAN BE A POWERFUL MAGNET** – in the form of a shed. Is there a space on earth with more pure attraction? Not if you're a bloke! And for women (and, yes, many men), a shed is especially attractive when it's colour co-ordinated with the rest of the home. COLORBOND® steel is the material that best lets you do this.

# Extend your indoors outdoors *more*



**WHY STOP AT A SHED** when it comes to inspired integration? Garage doors should also be a considered part of your master plan. How often do you see a garage door that simply looks out of place? Or dominates? Or worse, clashes? The expressive COLORBOND® steel palette let's you ensure this door – your biggest by far – will fit perfectly into your overall (colour) scheme of things.



MANGROVE™

**WHAT CAN BE MORE AUSTRALIAN** than a corrugated water tank? Environmentally sensible, aesthetically beautiful. Will you make a feature of your tank, or conversely camouflage it so that it disappears amongst the shrubbery?

**WHATEVER HOUSE STYLE** you choose, COLORBOND® steel can accent its appeal. Whether you express yourself with your biggest canvas of all – the roof – or display other tastefully curated COLORBOND® steel 'exhibits', the joy can be profound... for you, the family, even the community. Colour can do that.



# Colours



ROOFING, WALLING, GARAGE DOORS, GUTTERS, FASCIA, DOWNPIPES AND SHEDS

**LEGEND**  
① Also available in COLORBOND® Ultra steel for coastal and industrial environments. All other colours are available in COLORBOND® Ultra steel on request, please speak with your supplier.  
② Also available in COLORBOND® Stainless steel for severe coastal and industrial environments. Please speak to your supplier for more information regarding availability.

## CLASSIC colour range<sup>5</sup>



CLASSIC CREAM™

PAPERBARK®



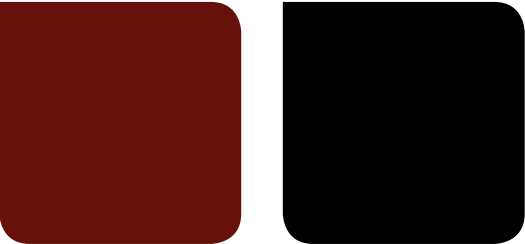
PALE EUCALYPT®

WOODLAND GREY® ①



DEEP OCEAN® ②

COTTAGE GREEN®



MANOR RED®

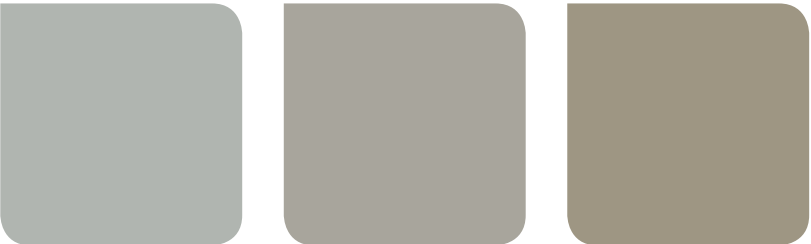
NIGHT SKY®

## CONTEMPORARY colour range<sup>5</sup>



SURFMIST® ① ②

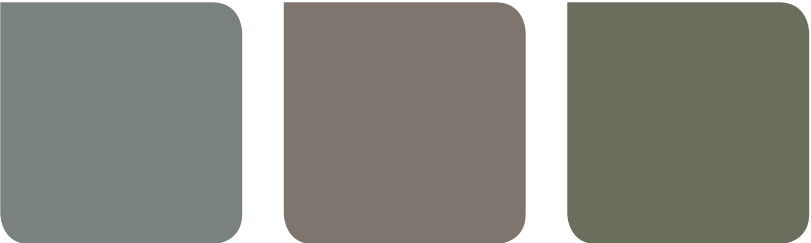
EVENING HAZE®



SHALE GREY™

DUNE® ① ②

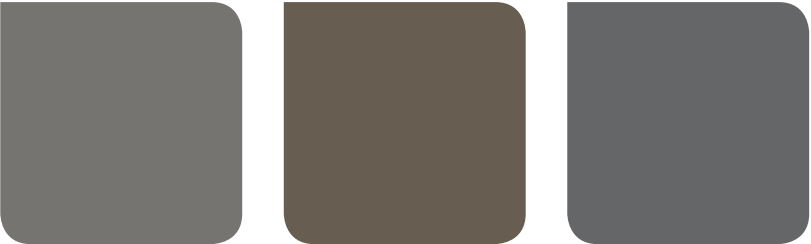
COVE™



WINDSPRAY® ① ②

GULLY™

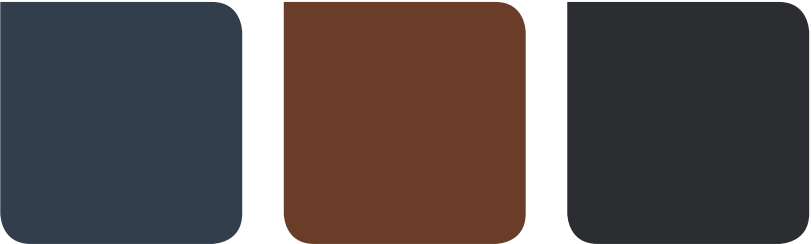
MANGROVE™



WALLABY™ ①

JASPER®

BASALT™



IRONSTONE®

TERRAIN®

MONUMENT® ①



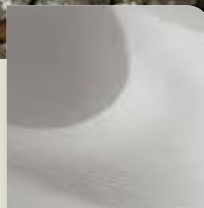
# COLORBOND® STEEL CREATE

Colorbond®

THE REAL JOY OF COLORBOND® STEEL ISN'T JUST THAT IT'S SUCH A SENSIBLE CHOICE OR SUCH A CREATIVE CHOICE... IT'S ALL THE INSPIRED CHOICES IT ALLOWS TO THOSE WITH COLOURFUL IMAGINATIONS.



SURFMIST®



DUNE®



**MAKE A CONFIDENT CHOICE  
WITH COLORBOND® STEEL**

**MADE IN AUSTRALIA** by BlueScope

**TRIED AND TESTED** for decades  
in the harsh Australian climate

**BACKED** by BlueScope warranties<sup>4</sup>

**A MATERIAL OF CHOICE** for homes  
designed with sustainability in mind

**QUICK**, easy and cost-effective to install

**LEADING** the Australian building  
products market in product and  
colour innovation and design

**IDENTIFIED** by the COLORBOND® steel  
brand mark so you know it's genuine

FOR COLOUR INSPIRATION AND EXPERIMENTATION,  
VISIT [COLORBOND.COM/CREATEYOURHOME](http://COLORBOND.COM/CREATEYOURHOME)

ANY QUESTIONS, OR FOR COLOUR SAMPLES,  
CALL **1800 702 764**

## LEGEND

① Also available in COLORBOND® Ultra steel for coastal and industrial environments. All other colours are available in COLORBOND® Ultra steel on request, please speak with your supplier.

② Also available in COLORBOND® Stainless steel for severe coastal and industrial environments. Please speak to your supplier for more information regarding availability.

1. Standard COLORBOND® steel (AM100 coating) compared to previous COLORBOND® steel (AZ150 coating), in all 18 Life Cycle Assessment (LCA) environmental impact categories when used in commercial and industrial roofing applications. The results of the LCA study are not applicable to COLORBOND® Ultra steel and COLORBOND® Stainless steel. 2. Thermatech® technology is not available in the colour Night Sky® and is not available in COLORBOND® Stainless steel. 3. Results will depend on level of insulation, building shape and function. 4. Warranty subject to application and eligibility criteria. For full terms and conditions and to determine the eligibility of your building for the warranty visit [bluescopesteel.com.au/warranties](http://bluescopesteel.com.au/warranties), or call BlueScope on 1800 702 764. 5. The COLORBOND® steel colour swatches and images shown in this brochure have been reproduced to represent actual product colours as accurately as possible. However, we recommend checking your chosen colour against an actual sample of the product before purchasing, as varying light conditions and limitations of the printing process may affect colour tones. To determine the most suitable material for your project, please contact your supplier or see [colorbond.com/createyourhome](http://colorbond.com/createyourhome). COLORBOND®, Thermatech®, BlueScope, the BlueScope brand mark and ® colour names are registered trade marks of BlueScope Steel Limited. Activate™ and ™ colour names are trade marks of BlueScope Steel Limited. © 2013 BlueScope Steel Limited ABN 16 000 011 058. All rights reserved.

