

UMA JORNADA DE TRABALHO MAIS SEGURA TODOS OS DIAS

LAVORO[®]

ENGINEERING LIFE



SAFETY FOOTWEAR
2025

ARIES

EN ISO 20345:2022/A1:2024 CE S3S HI CI FO SR

64,66€



\ 1202.01 \

EU 35-48 / UK 2^{1/5}-13 / MP 217-315

PROTECTIVE MIDSOLE

KEVLAR
(PT) Kevlar (ES) Kevlar (FR) Kevlar (DE) Kevlar

PROTECTIVE TOE CAP

FIBERGLASS
(PT) Fibra de Vidro (ES) Fibra de Vidrio (FR) Fibre de Verre (DE) Glasfaser

SOLE

DOUBLE DENSITY PU W/ MSI
(PT) Dupla Densidade PU c/ MSI (ES) Doble Densidade PU con MSI (FR) Double Densité PU avec MSI (DE) Zweikomponenten PU mit MSI

UPPER RAW MATERIAL

NUBUCK LEATHER WR W/ BREATHABLE TEXTILE
(PT) Couro Nobuck WR com Têxtil Respirável (ES) Cuero Nobuck WR con Têxtil Respirable (FR) Cuir Nubuck WR avec Textile Respirant (DE) Nubukleder WR mit Atmungsaktivem Textil

LINING MATERIAL

AERPLUSSTECHTEX
(PT) Aerplus TechTex (ES) Aerplus TechTex (FR) Aerplus TechTex (DE) Aerplus TechTex

DRACO

EN ISO 20345:2022/A1:2024 CE S1PS HI CI FO SR

80,91€



\ 1202.31 \

EU 35-48 / UK 2^{1/5}-13 / MP 217-315

PROTECTIVE MIDSOLE

KEVLAR
(PT) Kevlar (ES) Kevlar (FR) Kevlar (DE) Kevlar

PROTECTIVE TOE CAP

FIBERGLASS
(PT) Fibra de Vidrio (ES) Fibra de Vidrio (FR) Fibre de Verre (DE) Glasfaser

SOLE

DOUBLE DENSITY PU W/ MSI
(PT) Dupla Densidade PU c/ MSI (ES) Doble Densidade PU con MSI (FR) Double Densité PU avec MSI (DE) Zweikomponenten PU mit MSI

UPPER RAW MATERIAL

NUBUCK LEATHER WR 20/22 + BREEZEMESH 3D
(PT) Couro Nobuck com Têxtil Respirável 3D (ES) Cuero Nobuck con Têxtil Respirable 3D (FR) Cuir Nubuck avec Textile Respirant 3D (DE) Nubukleder mit Atmungsaktivem Textil 3D

LINING MATERIAL

AERPLUSSTECHTEX
(PT) Aerplus TechTex (ES) Aerplus TechTex (FR) Aerplus TechTex (DE) Aerplus TechTex

71,53€



\ 1002.01 \

ANDROMEDA

EN ISO 20345:2022/A1 2024 CE S3S HI CI FO SR



80,91€



\ 1202.11 \

AURIGA

EN ISO 20345:2022/A1:2024 CE S3S HI CI FO SR

PROTECTIVE MIDSOLE

KEVLAR
(PT) Kevlar (ES) Kevlar (FR) Kevlar (DE) Kevlar

PROTECTIVE TOE CAP

FIBERGLASS
(PT) Fibra de Vidrio (ES) Fibra de Vidrio (FR) Fibre de Verre (DE) Glasfaser

SOLE

DOUBLE DENSITY PU W/ MSI
(PT) Dupla Densidade PU c/ MSI (ES) Doble Densidade PU con MSI (FR) Double Densité PU avec MSI (DE) Zweikomponenten PU mit MSI

UPPER RAW MATERIAL

WR BREATHABLE HI-TECH MFN
(PT) Tecnologia MFN (ES) Tecnologia MFN (FR) Technologie MFN (DE) Atmungsaktiv

LINING MATERIAL

AERPLUSSTECHTEX + SYMPATEX MEMBRANE
(PT) Aerplus TechTex + Membrana Sympatex (ES) Aerplus TechTex + Membrana Sympatex (FR) Aerplus TechTex + Membrane Sympatex (DE) Aerplus TechTex + Sympatex-Membran

80,91€



\ 1202.21 \

HYDRA

EN ISO 20345:2022/A1:2024 CE S7S HI CI FO SR

87,78€



\ 1002.11 \

HERCULES

EN ISO 20345:2022/A1:2024 CE S7S HI CI FO SR



TAURUS

EN ISO 20345:2022/A1:2024 CE S7S HI CI FO SR

97,16€



**QUICK
RELEASE
SYSTEM**



\ 1228.20 \

EU 35-48 / UK 2^{1/5}-13 / MP 217-315

PROTECTIVE MIDSOLE

KEVLAR
(PT) Kevlar (ES) Kevlar (FR) Kevlar (DE) Kevlar

PROTECTIVE TOE CAP

FIBERGLASS
(PT) Fibra de Vidro (ES) Fibra de Vidrio (FR) Fibre de Verre (DE) Glasfaser

SOLE

DOUBLE DENSITY PU W/ MSI
(PT) Dupla Densidade PU c/ MSI (ES) Doble Densidade PU con MSI (FR) Double Densité PU avec MSI (DE) Zweikomponenten PU mit MSI

UPPER RAW MATERIAL

WR BREATHABLE HI-TECH MFN
(PT) Tecnologia MFN (ES) Tecnología MFN (FR) Technologie MFN (DE) MFN Technologie

LINING MATERIAL

AERPLUS TECHTEX + SYMPATEX MEMBRANE
(PT) Aerplus TechTex + Membrana Sympatex (ES) Aerplus TechTex + Membrana Sympatex (FR) Aerplus TechTex + Membrane Sympatex (DE) Aerplus TechTex + Sympatex-Membran



**QUICK
RELEASE
SYSTEM**



\ 1028.20 \

SAGITARIUS

EN ISO 20345:2022/A1:2024 CE S7S HI CI FO SR

**SLIP IN.
EASY.
FAST.**

CRATER

EN ISO 20345:2022/A1:2024 CE S3S HI CI FO SR

64,66€

EU 35-48 / UK 2^{1/5}-13 / MP 217-315

PROTECTIVE MIDSOLE

KEVLAR
(PT) Kevlar (ES) Kevlar (FR) Kevlar (DE) Kevlar

PROTECTIVE TOE CAP

FIBERGLASS
(PT) Fibra de Vidro (ES) Fibra de Vidrio (FR) Fibre de Verre (DE) Glasfaser

SOLE

DOUBLE DENSITY PU W/ MSI
(PT) Dupla Densidade PU c/ MSI (ES) Doble Densidade PU con MSI (FR) Double Densité PU avec MSI (DE) Zweikomponenten PU mit MSI

UPPER RAW MATERIAL

SCBD HAR TEXTILE
(PT) Têxtil SCBD HAR (ES) Textil SCBD HAR (FR) Textile SCBD HAIR (DE) SCBD HAIR Textile

LINING MATERIAL

DRYLEX PLUS 3SW
(PT) Drylex Plus 3SW (ES) Drylex Plus 3SW (FR) Drylex Plus 3SW (DE) Drylex Plus 3SW



\ 1231.06 \

64,66€



\ 1241.00 \

CORVUS

EN ISO 20345:2022/A1:2024 CE S3S HI CI FO SR



71,53€



\ 1031.06 \

CAPRICORNIUS

EN ISO 20345:2022/A1:2024 CE S3S HI CI FO SR



PISCES

EN ISO 20345:2022/A1:2024 CE S3S HI CI FO SR

EU 35-48 / UK 2^{1/5}-13 / MP 217-315

67,78€



\ 1232.08 \

PROTECTIVE MIDSOLE

KEVLAR
(PT) Kevlar (ES) Kevlar (FR) Kevlar (DE) Kevlar

PROTECTIVE TOE CAP

FIBERGLASS
(PT) Fibra de Vidro (ES) Fibra de Vidrio (FR) Fibre de Verre (DE) Glasfaser

SOLE

DOUBLE DENSITY PU W/ MSI
(PT) Dupla Densidade PU c/ MSI (ES) Doble Densidade PU con MSI (FR) Double Densité PU avec MSI (DE) Zweikomponenten PU mit MSI

UPPER RAW MATERIAL

GUAPA UR TEXTILE
(PT) Textil GUAPA UR (ES) Textil GUAPA UR (FR) Textile GUAPA UR (DE) GUAPA-UR-Textil

LINING MATERIAL

AERPLUS TECHTEX
(PT) Aerplus TechTex (ES) Aerplus TechTex (FR) Aerplus TechTex (DE) Aerplus TechTex

LEO

EN ISO 20345:2022/A1:2024 CE S3S HI CI FO SR

67,78€



\ 1236.02 \

EU 35-48 / UK 2^{1/5}-13 / MP 217-315

PROTECTIVE MIDSOLE

KEVLAR
(PT) Kevlar (ES) Kevlar (FR) Kevlar (DE) Kevlar

PROTECTIVE TOE CAP

FIBERGLASS
(PT) Fibra de Vidro (ES) Fibra de Vidrio (FR) Fibre de Verre (DE) Glasfaser

SOLE

DOUBLE DENSITY PU W/ MSI
(PT) Dupla Densidade PU c/ MSI (ES) Doble Densidade PU con MSI (FR) Double Densité PU avec MSI (DE) Zweikomponenten PU mit MSI

UPPER RAW MATERIAL

VHQ WAXED NUBUCK LEATHER
(PT) Pele Nubuck Encerada VHQ (ES) VHQ gewachstes Nubukleder (FR) Cuir nubuck ciré VHQ (DE) Piel nubuck encerada VHQ

LINING MATERIAL

ANILINE LEATHER
(PT) Pele Anilina (ES) Piel Anilina (FR) Cuir Aniline (DE) Anilinleder



GUAPA

Developed with advanced protective technology, this upper material brings a new level of performance to safety footwear. Its innovative reinforced structure offers outstanding abrasion resistance, while remaining impressively lightweight and breathable. This ensures long-lasting protection without adding unnecessary weight, keeping the wearer comfortable throughout demanding workdays.

Engineered to withstand intense friction and heavy use, it surpasses 8,000 cycles in abrasion testing - delivering durability that professionals can rely on in tough environments.



67,78€



\ 1236.06 \

LIBRA

EN ISO 20345:2022/A1:2024 CE S3S HI CI FO SR



ECLIPSE BLACK

EN ISO 20345:2011/A1 2024 CE S7S HI CI SR HRO FO LG

113,09€



\ 1068.40 \

EU 39-46 / UK 6-13 / MP 247-315

PROTECTIVE MIDSOLE

KEVLAR
(PT) Kevlar (ES) Kevlar (FR) Kevlar (DE) Kevlar

PROTECTIVE TOE CAP

FIBERGLASS
(PT) Fibra de Vidro (ES) Fibra de Vidrio (FR) Fibre de Verre (DE) Glasfaser

SOLE

ShieldCore™ (RUBBER + SCF + CCS + PU)
(PT) Borracha + SCF + CCS + PU (ES) Caucho + SCF+CCS + PU (FR) Caoutchouc + SCF + CCS + PU (DE) Gummi + SCF + CCS + PU

UPPER RAW MATERIAL

NUBUCK LEATHER WR 20/22
(PT) Couro Nubuck WR 20/22 (ES) Cuero Nubuck WR 20/22 (FR) Cuir NUBUCK WR 20/22 (DE) Nubukleder WR 20/22

LINING MATERIAL

SOFT ANILINE LEATHER + SYMPATEX MEMBRANE
(PT) Pele Anilina Macia + Membrana Sympatex (ES) Piel Anilina Suave + Membrana Sympatex (FR) Cuir Aniline Souple + Membrane Sympatex (DE) Weiches Anilinleder + Sympatex Membrane

ARGYLL

EN ISO 17249:2013/AC:2014 CLASS 1 CE S3 SRC HRO HI CI FO

187,47€



\ 1069.01 \

EU 39-46 / UK 6-13 / MP 247-315

PROTECTIVE MIDSOLE

KEVLAR
(PT) Kevlar (ES) Kevlar (FR) Kevlar (DE) Kevlar

PROTECTIVE TOE CAP

STEEL
(PT) Aço (ES) Acero (FR) Acier (DE) Stahlkappe

SOLE

SHIELDCORE™ (RUBBER + SCF + CCS + PU)
(PT) Borracha + SCF + CCS + PU (ES) Caucho + SCF+CCS + PU (FR) Caoutchouc + SCF + CCS + PU (DE) Gummi + SCF + CCS + PU

UPPER RAW MATERIAL

NUBUCK LEATHER WR 20/22
(PT) Couro Nubuck WR 20/22 (ES) Cuero Nubuck WR 20/22 (FR) Cuir Nubuck WR 20/22 (DE) Nubukleder WR 20/22

LINING MATERIAL

AERPLUS TECHTEX. TECHNICAL TEXTILE 100% PES
(PT) Têxtil técnico Aerplus (ES) Textil técnico Aerplus (FR) Textile technique Aerplus (DE) Technisches Textil Aerplus

113,09€



\ 1068.42 \

ECLIPSE BROWN

EN ISO 20345:2022/A1 2024 CE S7S HI CI FO SR HRO FO LG



214,34€



\ 1069.07 \

GALLOWAY

EN ISO 17249:2013/AC:2014 CLASS 2
CE S7 SRC HRO HI CI FO



229,97€



\ 1069.08 \

KIELDER

EN ISO 17249:2013/AC:2014 CLASS 3
CE S7 SRC HRO HI CI FO



RAVEN SPEED

EN ISO 20345:2022 CE S3S CI HI HRO SR

113,72€



EU 39-48 / UK 6-13 / MP 247-315

PROTECTIVE MIDSOLE

DYNEEMA

(PT) Dyneema (ES) Dyneema (FR) Dyneema (DE) Dyneema

PROTECTIVE TOE CAP

FIBERGLASS

(PT) Fibra de Vidro (ES) Fibra de Vidrio (FR) Fibre de Verre (DE) Glasfaser

SOLE

SUPERNOVA SCF + RUBBER

(PT) Supernova SCF + Borracha (ES) Supernova SCF + Caucho (FR) Supernova + Nitril (DE) Supernova + Gummi

UPPER RAW MATERIAL

RECYCLED TEXTILE (16%)

(PT) Têxtil Reciclado (ES) Textil Reciclado (FR) Textile Recyclé (DE) Recyceltes Textiel

LINING MATERIAL

BREATHABLE TEXTILE

(PT) Têxtil Respirável (ES) Textil Respirable (FR) Textile Respirant (DE) Atmungsaktiv Textil



\ 1209.36 \

FALCON SPEED GREY

EN ISO 20345:2022 CE S3S CI HI HRO SR

113,72€



EU 39-48 / UK 6-13 / MP 247-315

PROTECTIVE MIDSOLE

DYNEEMA

(PT) Dyneema (ES) Dyneema (FR) Dyneema (DE) Dyneema

PROTECTIVE TOE CAP

FIBERGLASS

(PT) Fibra de Vidro (ES) Fibra de Vidrio (FR) Fibre de Verre (DE) Glasfaser

SOLE

SUPER CRITICAL FOAM + RUBBER

(PT) Supernova SCF + Borracha (ES) Supernova SCF + Caucho (FR) Supernova + Nitril (DE) Supernova + Gummi

UPPER RAW MATERIAL

RECYCLED TEXTILE (16%)

(PT) Têxtil Reciclado (ES) Textil Reciclado (FR) Textile Recyclé (DE) Recyceltes Textiel

LINING MATERIAL

BREATHABLE TEXTILE

(PT) Têxtil Respirável (ES) Textil Respirable (FR) Textile Respirant (DE) Atmungsaktiv Textil



\ 1209.16 \

97,47€



\ 1209.46 \

RAVEN

EN ISO 20345:2022 CE S3S HI CI HRO SR

97,47€



\ 1209.06 \

FALCON GREY

EN ISO 20345:2022 CE S3S CI HI HRO SR



STARGATE BLACK

EN ISO 20345:2022/A1 2024 CE S2 PL SR

83,72€



\ 1201.00 \

EU 35-47 / UK 2nd-12 / MP 217-317

PROTECTIVE MIDSOLE
KEVLAR
(PT) Kevlar (ES) Kevlar (FR) Kevlar (DE) Kevlar

PROTECTIVE TOE CAP
COMPOSITE
(PT) Composite (ES) Composite (FR) Composite (DE) Kunststoffkappe

SOLE
TPU + EVA PHYLON
(PT) TPU + Eva Phylon (ES) TPU + Eva Phylon (FR) TPU + Eva Phylon (DE) TPU + Eva Phylon

UPPER RAW MATERIAL
HI-TECH TEXTILE
(PT) Têxtil Hi-Tech (ES) Têxtil Hi-Tech (FR) Textile Hi-Tech (DE) High-Tech Textiel

LINING MATERIAL
BREATHABLE TEXTILE
(PT) Têxtil Respirável (ES) Têxtil Respirable (FR) Textile Respirant (DE) Atmungsaktiv Textil

EU 33-47 / UK 1-12 / MP 202-307

PROTECTIVE MIDSOLE
KEVLAR
(PT) Kevlar (ES) Kevlar (FR) Kevlar (DE) Kevlar

PROTECTIVE TOE CAP
COMPOSITE
(PT) Composite (ES) Composite (FR) Composite (DE) Kunststoffkappe

SOLE
TPU + EVA PHYLON
(PT) TPU + Eva Phylon (ES) TPU + Eva Phylon (FR) TPU + Eva Phylon (DE) TPU + Eva Phylon

UPPER RAW MATERIAL
WR BREATHABLE HI-TECH MF
(PT) Tecnologia MF (ES) Tecnología MF (FR) Technologie MF (DE) MF Technologie

LINING MATERIAL
DRYLEX TEXTILE
(PT) Têxtil Drylex (ES) Têxtil Drylex (FR) Textile Drylex (DE) Drylex Textil

STARDUST BLUE

EN ISO 20345:2011 CE S1 P WRU SRC

110,59€



\ 1200.10 \



EXTRA CUSHIONING



SANDAL // EXTRA BREATHABLE

EU 36-47 / UK 3-12 / MP 225-307

110,59€



\ 1400.10 \

STARSIGHT BLUE
EN ISO 20345:2011 CE S1 P SRC

EU 35-47 / UK 2nd-12 / MP 227-307

87,16€



\ 1200.00 \

STARLIGHT BLUE
EN ISO 20345: 2011 CE S1 P WRU SRC



GLADE BLUE

EN ISO 20345:2011 CE S3 CI HI SRC

64,97€



\ 1227.01 \

EU 36-48 / UK 3-13 / MP 225-315

PROTECTIVE MIDSOLE

KEVLAR
(PT) Kevlar (ES) Kevlar (FR) Kevlar (DE) Kevlar

PROTECTIVE TOE CAP

FIBERGLASS
(PT) Fibra de Vidro (ES) Fibra de Vidrio (FR) Fibre de Verre (DE) Glasfaser

SOLE

DOUBLE DENSITY PU
(PT) Dupla Densidade PU (ES) Doble Densidade PU (FR) Double Densité PU (DE) Zweikomponenten PU

UPPER RAW MATERIAL

WR BREATHABLE HI-TECH MF
(PT) Tecnologia MF (ES) Tecnología MF (FR) Technologie MF (DE) MF Technologie

LINING MATERIAL

BREATHABLE TEXTILE
(PT) Têxtil Respirável (ES) Textil Respirable (FR) Textile Respirant (DE) Atmungsaktiv

CANYON BLACK

EN ISO 20345:2011 CE S3 CI HI SRC

67,16€



\ 1025.00 \

EU 36-48 / UK 3-13 / MP 225-315

PROTECTIVE MIDSOLE

KEVLAR
(PT) Kevlar (ES) Kevlar (FR) Kevlar (DE) Kevlar

PROTECTIVE TOE CAP

FIBERGLASS
(PT) Fibra de Vidro (ES) Fibra de Vidrio (FR) Fibre de Verre (DE) Glasfaser

SOLE

DOUBLE DENSITY PU
(PT) Dupla Densidade PU (ES) Doble Densidade PU (FR) Double Densité PU (DE) Zweikomponenten PU

UPPER RAW MATERIAL

NUBUCK LEATHER
(PT) Pele Nubuck (ES) Cuero Nubuck (FR) Cuir Nubuck (DE) Schwartz Nubuckleer

LINING MATERIAL

DRYLEX TEXTILE
(PT) Têxtil Drylex (ES) Textil Drylex (FR) Textile Drylex (DE) Drylex Textil

71,53€



\ 1027.01 \

MEADOW BLUE

EN ISO 20345:2011 CE S3 CI HI SRC

81,22€



QUICK RELEASE SYSTEM



\ 1027.16 \

GLADE SPEED GREY

EN ISO 20345:2011 CE S3 CI HI SRC

87,78€



QUICK RELEASE SYSTEM



\ 1027.16 \

GLADE SPEED GREY

EN ISO 20345:2011 CE S3 CI HI SRC

60,28€



\ 1225.00 \

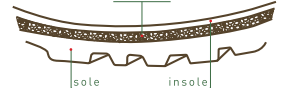
JASPER

EN ISO 20345:2011 CE S3 CI HI SRC



CLIMA CORK SYSTEM

cork layer



SNOWMASS

EN ISO 20345:2011 CE S3 WR CI HI SRC

77,16€



Available with metatarsal protection.
Ref. 1025.20



\ 1025.10 \

EU 36-48 / UK 3-13 / MP 225-315

- PROTECTIVE MIDSOLE**
KEVLAR
(PT) Kevlar (ES) Kevlar (FR) Kevlar (DE) Kevlar
- PROTECTIVE TOE CAP**
FIBERGLASS
(PT) Fibra de Vidro (ES) Fibra de Vidrio (FR) Fibre de Verre (DE) Glasfaser
- SOLE**
DOUBLE DENSITY PU
(PT) Dupla Densidade PU (ES) Doble Densidade PU (FR) Double Densité PU (DE) Zweikomponenten PU
- UPPER RAW MATERIAL**
NUBUCK LEATHER
(PT) Pele Nubuck (ES) Cuero Nubuck (FR) Cuir Nubuck (DE) Schwartz Nubuckleer
- LINING MATERIAL**
AQUATEX WATERPROOF MEMBRANE
(PT) Membrana Impermeável Aquatex (ES) Membrana Impermeable Aquatex (FR) Membrane Impermeable Aquatex (DE) Aquatex Wasserdichte Membrane

YOSEMITE

EN ISO 20345:2011 CE S3 CI HI SRC

67,16€



\ 1026.42 \

EU 39-48 / UK 6-13 / MP 247-315

- PROTECTIVE MIDSOLE**
KEVLAR
(PT) Kevlar (ES) Kevlar (FR) Kevlar (DE) Kevlar
- PROTECTIVE TOE CAP**
FIBERGLASS
(PT) Fibra de Vidro (ES) Fibra de Vidrio (FR) Fibre de Verre (DE) Glasfaser
- SOLE**
DOUBLE DENSITY PU
(PT) Dupla Densidade PU (ES) Doble Densidade PU (FR) Double Densité PU (DE) Zweikomponenten PU
- UPPER RAW MATERIAL**
WR FLOATER COGNAC
(PT) WR Floater Cognac (ES) Coñac Floater WR (FR) Cuir Plein Fleur WR Cognac (DE) WR Floater Cognac
- LINING MATERIAL**
BREATHABLE DRYLEX TEXTILE
(PT) Têxtil Dry-Tex (ES) Textil Dry-Tex (FR) Textile Dry-Tex (DE) Dry-Tex Textil

EU 39-48 / UK 6-13 / MP 257-315

97,78€



\ 1025.25 \

YELLOWSTONE M
EN ISO 20345:2011 CE S3 WR CI HI M SRC



METATARSAL PROTECTION

97,16€



\ 1674.62 \

APALACHE
EN ISO 20345: 2011 CE S3 WR CI HI SRC



EU 36-48 / UK 3-13 / MP 235-315



FIORDLAND

EN ISO 20345:2022 CE S3L CI HI FO SR

93,72€



QUICK
RELEASE
SYSTEM



\ 1025.35 \



EU 36-46 / UK 3-13 / MP 225-315

PROTECTIVE MIDSOLE
KEVLAR

(PT) Kevlar (ES) Kevlar (FR) Kevlar (DE) Kevlar

PROTECTIVE TOE CAP
FIBERGLASS

(PT) Fibra de Vidro (ES) Fibra de Vidrio (FR) Fibre de Verre (DE) Glasfaser

SOLE

DOUBLE DENSITY PU

(PT) Dupla Densidade PU (ES) Doble Densidade PU (FR) Double Densité PU (DE) Zweikomponenten PU

UPPER RAW MATERIAL

NUBUCK LEATHER

(PT) Pele Nubuck (ES) Cuero Nobuck (FR) Cuir Nubuck (DE) Schwartz Nubuckleer

LINING MATERIAL

NATURAL LAMBSKIN

(PT) Pele Natural de Carneiro (ES) Piel de Cordero Natural (FR) Peau de Mouton Naturelle (DE) Natürliches Lamm Futter



VERY HIGH QUALITY

CASCADES BROWN 23

EN ISO 20345:2022 CE S7L CI HI HRO SC SR

94,97€



\ 1024.32 \

EU 39-47 / UK 6-12 / MP 247-307

PROTECTIVE MIDSOLE
KEVLAR

(PT) Kevlar (ES) Kevlar (FR) Kevlar (DE) Kevlar

PROTECTIVE TOE CAP
FIBERGLASS

(PT) Fibra de Vidro (ES) Fibra de Vidrio (FR) Fibre de Verre (DE) Glasfaser

SOLE

DIRECT INJECTED PU + VIBRAM

(PT) PU Diretamente Injetado + Vibram (ES) PU Inyectado + Vibram (FR) PU Injecté Directement + Vibram (DE) Direkt Eingespritztes PU + Vibram

UPPER RAW MATERIAL

CRAZY HORSE LEATHER

(PT) Pele Crazy Horse (ES) Cuero Crazy Horse (FR) Cuir Crazy Horse (DE) Crazy Horse Leder

LINING MATERIAL

SYMPATEX WATERPROOF MEMBRANE

(PT) Membrana Impermeável Sympatex (ES) Membrana Impermeable Sympatex (FR) Membrane Impermeable Sympatex (DE) Sympatex Wasserdichte



EU 36-47 / UK 3-12 / MP 225-307

PROTECTIVE MIDSOLE

KEVLAR

(PT) Kevlar (ES) Kevlar (FR) Kevlar (DE) Kevlar

PROTECTIVE TOE CAP

-

SOLE

DOUBLE DENSITY PU

(PT) Dupla Densidade PU (ES) Doble Densidade PU (FR) Double Densité PU (DE) Zweikomponenten PU

UPPER RAW MATERIAL

NUBUCK LEATHER

(PT) Pele Nubuck (ES) Cuero Nobuck (FR) Cuir Nubuck (DE) Zohwartz Nubuckleer

LINING MATERIAL

AQUATEX WATERPROOF MEMBRANE

(PT) Membrana Impermeável Aquatex (ES) Membrana Impermeable Aquatex (FR) Membrane Impermeable Aquatex (DE) Aquatex Wasserdichte Membrane



62,47€



\ 1025.12 \

PRADO

EN ISO 20347:2011 CE 03 HI CI SRC



94,97€



\ 1024.36 \

CASCADES GREY 23

EN ISO 20345:2011 CE S7L HI CI HRO SC SR



JABBA

EN ISO 20345:2011 CE S3 SRC

77,16€



\ 1203.06 \

EU 35-48 / UK 2^{1/2}-13 / MP 217-315

- PROTECTIVE MIDSOLE**
KEVLAR
(PT) Kevlar (ES) Kevlar (FR) Kevlar (DE) Kevlar
- PROTECTIVE TOE CAP**
COMPOSITE
(PT) Composite (ES) Composite (FR) Composite (DE) Kunststoffkappe
- SOLE**
DOUBLE DENSITY PU
(PT) Dupla Densidade PU (ES) Doble Densidade PU (FR) Double Densité PU (DE) Zweikomponenten PU
- UPPER RAW MATERIAL**
K3D TEXTILE
(PT) Têxtil K3D (ES) Textil K3D (FR) Textile K3D (DE) K3D Textil
- LINING MATERIAL**
BREATHABLE DRYLEX TEXTILE
(PT) Têxtil Dry-Tex (ES) Textil Dry-Tex (FR) Textile Dry-Tex (DE) Dry-Tex Textil

YODA TAUPE FL

EN ISO 20345:2022 CE S3L CI HI HRO SR FO

73,72€



\ 1204.12 \

EU 35-48 / UK 2^{1/2}-13 / MP 217-315

- PROTECTIVE MIDSOLE**
KEVLAR
(PT) Kevlar (ES) Kevlar (FR) Kevlar (DE) Kevlar
- PROTECTIVE TOE CAP**
COMPOSITE
(PT) Composite (ES) Composite (FR) Composite (DE) Kunststoffkappe
- SOLE**
DIRECT INJECTED PU + RUBBER
(PT) PU Diretamente Injetado + Borracha (ES) PU Inyectado + Caucho (FR) PU Injecté Directement + Nitril (DE) Direkt Eingespritztes PU + Gummi
- UPPER RAW MATERIAL**
NATURAL SMOOTH LEATHER
(PT) Pele Natural Macia (ES) Piel Natural Macia (FR) Cuir Souple Naturel (DE) Natürliches Weiches Leder
- LINING MATERIAL**
LEATHER
(PT) Pele (ES) Piel (FR) Cuir (DE) Leder



77,16€



\ 1203.11 \



BETTER FITTING

CHEWIE 22

EN ISO 20345:2011 CE S3 SRC

79,66€



\ 1204.12 \

LANDO TAUPE FL

EN ISO 20345:2022 CE S3L CI HI HRO SR FO



YODA BROWN

EN ISO 20345:2022 CE S3L CI HI HRO SR FO

70,28€



\ 1204.02 \

EU 35-48 / UK 2nd-13 / MP 217-315

PROTECTIVE MIDSOLE
KEVLAR
(PT) Kevlar (ES) Kevlar (FR) Kevlar (DE) Kevlar

PROTECTIVE TOE CAP
COMPOSITE
(PT) Composite (ES) Composite (FR) Composite (DE) Kunststoffkappe

SOLE
DIRECT INJECTED PU + RUBBER
(PT) PU Diretamente Injetado + Borracha (ES) PU Inyectado + Caucho (FR) PU Injecté Directement + Nitril (DE) Direkt Eingespritztes PU + Gummi

UPPER RAW MATERIAL
NUBUCK LEATHER
(PT) Pele Nubuck WR (ES) Cuero Nubuck (FR) Cuir Nubuck WR (DE) Nubuck Leder WR

LINING MATERIAL
DRYLEX TEXTILE
(PT) Têxtil Drylex (ES) Textil Drylex (FR) Textile Drylex (DE) Drylex Textil

LYNX EARTH

EN ISO 20345:2022 CE S3L CI HI FO SR

64,66€



\ 1257.06 \

EU 35-48 / UK 2nd-13 / MP 217-315

PROTECTIVE MIDSOLE
KEVLAR
(PT) Kevlar (ES) Kevlar (FR) Kevlar (DE) Kevlar

PROTECTIVE TOE CAP
COMPOSITE
(PT) Composite (ES) Composite (FR) Composite (DE) Kunststoffkappe

SOLE
DOUBLE DENSITY PU W/ 15% COOK
(PT) Dupla Densidade PU + Cortiça (ES) Doble Densidade PU + Corcho (FR) Doble Densité PU (DE) Zweikomponenten PU

UPPER RAW MATERIAL
RECYCLED TEXTILE (97%)
(PT) Têxtil Reciclado (ES) Textil Reciclado (FR) Textile Recyclé (DE) Recyceltes Textil

LINING MATERIAL
RECYCLED TEXTILE
(PT) Têxtil Reciclado (ES) Textil Reciclado (FR) Textile Recyclé (DE) Recyceltes Textil

79,66€



\ 1204.02 \

70,28€



\ 1204.00 \

75,91€



\ 1204.00 \

LANDO BROWN

EN ISO 20345:2011 CE S3L HI CI HRO SR FO

VADER BLACK

EN ISO 20345:2011 CE S3L HI CI HRO SR FO

KENOBI BLACK

EN ISO 20345:2011 CE S3L HI CI HRO SR FO

SOLE
DOUBLE DENSITY PU
(PT) PU Diretamente Injetado (ES) PU Inyectado (FR) PU Injecté Directement (DE) Direkt Eingespritztes PU

UPPER RAW MATERIAL
VHR TEXTILE
(PT) Têxtil VHR (ES) Textil (FR) Textile VHR (DE) VHR Textil

LINING MATERIAL
BREATHABLE TEXTILE
(PT) Têxtil Respirável (ES) Textil Respirable (FR) Textile Respirant (DE) Atmungsaktiv

64,66€



\ 1257.10 \

LYNX ICE

EN ISO 20345:2011 CE S3 SRC



LYNX BLACK

EN ISO 20345:2011 CE S3 SRC

61,53€

EU 35-48 / UK 2^{1/2}-13 / MP 217-315

PROTECTIVE MIDSOLE

KEVLAR

(PT) Kevlar (ES) Kevlar (FR) Kevlar (DE) Kevlar

PROTECTIVE TOE CAP

COMPOSITE

(PT) Composite (ES) Composite (FR) Composite (DE) Kunststoffkappe

SOLE

DOUBLE DENSITY PU

(PT) Dupla Densidade PU (ES) Doble Densidade PU (FR)

Double Densité PU (DE) Zweikomponenten PU

UPPER RAW MATERIAL

WR BREATHABLE HI-TECH

(PT) Tecnologia MF (ES) Tecnología MF (FR) MF Technologie

(DE) MF Technologie

LINING MATERIAL

BREATHABLE TEXTILE

(PT) Têxtil Respirável (ES) Textil Respirable (FR) Textile

Respirant (DE) Atmungsaktiv



\ 1257.50 \

VAGOS

EN ISO 20345:2022 CE S2 SR

41,84€

EU 34-48 / UK 2-13 / MP 217-315

PROTECTIVE MIDSOLE

-

PROTECTIVE TOE CAP

COMPOSITE

(PT) Composite (ES) Composite (FR) Composite (DE)

Kunststoffkappe

SOLE

DOUBLE DENSITY PU

(PT) Dupla Densidade PU (ES) Doble Densidade PU

(FR) Double Densité PU (DE) Zweikomponenten PU

UPPER RAW MATERIAL

VEGAN MICROFIBER

(PT) Microfibra Vegan (ES) Microfibra Vegan (FR) Microfibre

Vegan (DE) Mikrofaser Vegan

LINING MATERIAL

DRYLEX TEXTILE

(PT) Têxtil Drylex (ES) Textil Drylex (FR) Textile Drylex (DE)

Drylex Textil



\ 1111.23 \

66,22€



\ 1057.50 \

DRAGON BLACK

EN ISO 20345:2011 CE S3 SRC

61,53€



\ 1257.51 \

LYNX BLUE

EN ISO 20345:2011 CE S3 SRC

61,53€



\ 1257.51 \

ARA

EN ISO 20345:2011 CE S1 P SRC

41,84€



\ 1111.30 \

TOCHA 22

EN ISO 20345:2011 CE S3 SRC



VADER XXL

EN ISO 20345:2011 CE S3 SRA

81,84€



\ 1204.30 \

EU 49-53 / UK 14-17 / MP 322-352

PROTECTIVE MIDSOLE

KEVLAR

(PT) Kevlar (ES) Kevlar (FR) Kevlar (DE) Kevlar

PROTECTIVE TOE CAP

COMPOSITE

(PT) Composite (ES) Composite (FR) Composite (DE)

Kunststoffkappe

SOLE

DOUBLE DENSITY PU

(PT) Dupla Densidade PU (ES) PU Doble Densidade PU

(FR) Double Densité PU (DE) Zweikomponenten PU

UPPER RAW MATERIAL

FULL GRAIN LEATHER

(PT) Pele de Flor Integral (ES) Cuero Full Grain (FR) Cuir Plein

Fleur Grainé (DE) Glattleder

LINING MATERIAL

DRYLEX TEXTILE

(PT) Têxtil Drylex (ES) Textil Drylex (FR) Textile Drylex (DE)

Drylex Textil

KENOBI XXL

EN ISO 20345:2011 CE S3 SRA

87,16€



\ 1004.30 \

E04

EN ISO 20345: 2022/A1:2024 S3S HI CI HRO FO SR

68,72€



\ 1255.06 \

EU 35-47 / UK 2^{1/2}-12 / MP 217-317

PROTECTIVE MIDSOLE

KEVLAR

(PT) Kevlar (ES) Kevlar (FR) Kevlar (DE) Kevlar

PROTECTIVE TOE CAP

FIBERGLASS

(PT) Fibrã de Vidrio (ES) Fibrã de Vidrio (FR) Fibre de Verre

(DE) Glasfaser

SOLE

DIRECT INJECTED PU + RUBBER

(PT) PU Diretamente Injetado + Borracha (ES) PU Inyectado

+ Caucho (FR) PU Injecté Directement + Nitril (DE) Direkt

Eingespritztes PU + Gummi

UPPER RAW MATERIAL

NUBUCK LEATHER + TEXTILE

(PT) Pele Nubuck + Têxtil (ES) Cuero Nobuck + Textil (FR)

Cuir Nubuck + Textile (DE) Nubuckleder + Textil

LINING MATERIAL

DRYLEX TEXTILE

(PT) Têxtil Drylex (ES) Textil Drylex (FR) Textile Drylex (DE)

Drylex Textil

XXL
49 - 53

74,34€



\ 1055.06 \

E14

EN ISO 20345:2022/A1:2024 S3S HI CI HRO FO SR

68,72€



\ 1255.00 \

E05

EN ISO 20345:2022/A1:2024 S3S HI CI HRO FO SR

74,34€



\ 1055.00 \

E15

EN ISO 20345:2022/A1:2024 S3S HI CI HRO FO SR



E02

EN ISO 20345:2011 CE S3 HRO SRC

EU 35-48 / UK 2^{1/2}-13 / MP 217-315

PROTECTIVE MIDSOLE

KEVLAR

(PT) Kevlar (ES) Kevlar (FR) Kevlar (DE) Kevlar

PROTECTIVE TOE CAP

STEEL

(PT) Aço (ES) Acero (FR) Acier (DE) Stahlkappe

SOLE

DIRECT INJECTED PU + RUBBER

(PT) PU Diretamente Injetado + Borracha (ES) PU Inyectado

+ Caucho (FR) PU Injecté Directement + Nitril (DE) Direkt

Eingespritztes PU + Gummi

UPPER RAW MATERIAL

NUBUCK LEATHER

(PT) Pele Nubuck (ES) Cuero Nubuck (FR) Cuir Nubuck (DE)

Nubuckleder

LINING MATERIAL

BREATHABLE TEXTILE

(PT) Têxtil Respirável (ES) Textil Respirable (FR) Textile Respirant

(DE) Atmungsaktiv Textil



\ 1256.00 \

E 10 BLACK

EN ISO 20345:2011 CE S3 HRO SRC



\ 1084.30 \

E 16 HONEY

EN ISO 20345:2011 CE S3 HRO SRC



\ 1084.36 \

PROTECTIVE MIDSOLE

KEVLAR

(PT) Kevlar (ES) Kevlar (FR) Kevlar (DE) Kevlar

PROTECTIVE TOE CAP

STEEL

(PT) Aço (ES) Acero (FR) Acier (DE) Stahlkappe

SOLE

DIRECT INJECTED PU + RUBBER

(PT) PU Diretamente Injetado + Borracha (ES) PU Inyectado

+ Caucho (FR) PU Injecté Directement + Nitril (DE) Direkt

Eingespritztes PU + Gummi

UPPER RAW MATERIAL

NUBUCK LEATHER

(PT) Pele Nubuck (ES) Cuero Nubuck (FR) Cuir Nubuck (DE)

Nubuckleder

LINING MATERIAL

BREATHABLE TEXTILE

(PT) Têxtil Respirável (ES) Textil Respirable (FR) Textile Respirant

(DE) Atmungsaktiv Textil



\ 1084.22 \

E 17 BROWN

EN ISO 20345:2011 CE S3 HRO SRC

EU 39-48 / UK 6-13 / MP 257-315



\ 1058.00 \

E 22

EN ISO 20345:2011 CE S3 HRO SRC



HYBRID BLUE

EN ISO 20345:2011 CE S3 SRC

53,72€



\ 1263.11 \

EU 35-48 / UK 2 1/2-13 / MP 217-315

PROTECTIVE MIDSOLE
KEVLAR
(PT) Kevlar (ES) Kevlar (FR) Kevlar (DE) Kevlar

PROTECTIVE TOE CAP
COMPOSITE
(PT) Composite (ES) Composite (FR) Composite (DE) Kunststoffkappe

SOLE
DIRECT INJECTED PU + TPU
(PT) PU Diretamente Injetado + TPU (ES) PU Inyectado + TPU (FR) PU Injecté Directement + TPU (DE) Direkt Eingespritztes PU + TPU

UPPER RAW MATERIAL
LASER HD WR TEXTILE
(PT) Têxtil Laser HD WR (ES) Textil Laser HD WR (FR) Textile Laser HD WR (DE) WR Floater Cognac

LINING MATERIAL
BREATHABLE TEXTILE
(PT) Têxtil Respirável (ES) Textil Respirable (FR) Textile Respirant (DE) Atmungsaktiv Textil

SOLAR

EN ISO 20345:2011 CE S1 P SRC

44,97€



\ 1250.01 \

EU 36-48 / UK 3-13 / MP 225-315

PROTECTIVE MIDSOLE
KEVLAR
(PT) Kevlar (ES) Kevlar (FR) Kevlar (DE) Kevlar

PROTECTIVE TOE CAP
COMPOSITE
(PT) Composite (ES) Composite (FR) Composite (DE) Kunststoffkappe

SOLE
DIRECT INJECTED PU + TPU
(PT) PU Diretamente Injetado + TPU (ES) PU Inyectado Directo + TPU (FR) PU Injecté Directement + TPU (DE) Direkt Eingespritztes PU + TPU

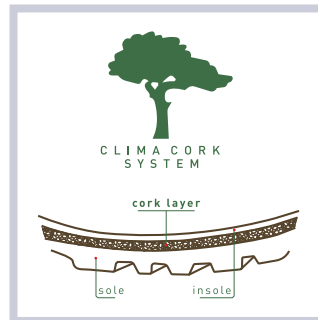
UPPER RAW MATERIAL
SUEDE LEATHER
(PT) Couro Acamurçado (ES) Cuero de Gamuza (FR) Croute Velours (DE) Suede Leder

LINING MATERIAL
BREATHABLE TEXTILE
(PT) Têxtil Respirável (ES) Textil Respirable (FR) Textile Respirant (DE) Atmungsaktiv Textil

53,72€



\ 1263.14 \



HYBRID RED

EN ISO 20345:2011 CE S3 SRC

44,97€



\ 1250.00 \

TIDAL

EN ISO 20345:2011 CE S1 P SRC

46,84€



\ 1050.00 \

BIOMASS

EN ISO 20345:2011 CE S3 SRC

UPPER RAW MATERIAL
LEATHER + TEXTILE
(PT) Pele + Têxtil (ES) Piel + Textil (FR) Cuir + Textile (DE) Leder + Textil



JAMOR

EN ISO 20345:2022 CE S3L HI CI FO SR

70,28€



\ 1237.00 \

EU 36-47 / UK 3-12 / MP 225-307

- PROTECTIVE MIDSOLE**
KEVLAR
(PT) Kevlar (ES) Kevlar (FR) Kevlar (DE) Kevlar
- PROTECTIVE TOE CAP**
STEEL
(PT) Aço (ES) Acero (FR) Acier (DE) Stahlkappe
- SOLE**
DOUBLE DENSITY PU
(PT) Dupla Densidade PU (ES) Doble Densidade PU (FR) Double Densité PU (DE) Zweikomponenten PU
- UPPER RAW MATERIAL**
MATRIX KEVLAR + ANILINE LEATHER
(PT) Matrix Kevlar + Pele Anilina (ES) Matrix Kevlar + Cuero Anilina (FR) Matrix Kevlar + Aniline Leder (DE) Matrix Kevlar + Aniline Leder
- LINING MATERIAL**
BREATHABLE TEXTILE
(PT) Têxtil Respirável (ES) Textil Respirable (FR) Textile Respirant (DE) Atmungsaktiv Textil

EXPLORATION HIGH

EN ISO 20345:2022/A1:2024 CE S7 HI CI FO SR

84,34€



\ 1611.00 \

EU 39-48 / UK 6-13 / MP 247-315

- PROTECTIVE MIDSOLE**
STEEL
(PT) Aço (ES) Acero (FR) Acier (DE) Stahlkappe
- PROTECTIVE TOE CAP**
STEEL
(PT) Aço (ES) Acero (FR) Acier (DE) Stahlkappe
- SOLE**
DIRECT INJECTED PU
(PT) PU Diretamente Injetado (ES) PU Inyectado Directo (FR) PU Injecté Directement (DE) Direkt Eingespritztes PU
- UPPER RAW MATERIAL**
FULL GRAIN LEATHER
(PT) Pele de Flor Integral (ES) Cuero Full Grain (FR) Cuir Plein Fleur Grainé (DE) Glattleder
- LINING MATERIAL**
AQUATEX WATERPROOF MEMBRANE
(PT) Membrana Impermeável Aquatex (ES) Membrana Impermeable Aquatex (FR) Membrane Impermeable Aquatex (DE) Aquatex Wasserdichte Membrane

EXPLORATION LOW

EN ISO 20345:2022/A1:2024 CE S7 HI CI FO SR

74,97€



\ 1011.00 \

70,28€



\ 1238.02 \

Designed for multidirectional floors, giving a perfect traction with comfort to your feet



TECHNICAL CONTRIBUTION OF **SPODOS**[®]
FOOT SCIENCE CENTER

TEAM BROWN

EN ISO 20345:2022 CE S3L CI HI FO SR



ELITE

EN ISO 17249:2013 **CLASS 2**
EN ISO 20345:2011 **CE S3 CI HI HRO SRC**

204,97€



\ 1671.02 \

EU 39-48 / UK 6-13 / MP 247-315

PROTECTIVE MIDSOLE

STEEL
(PT) Aço (ES) Acero (FR) Acier (DE) Stahlkappe

PROTECTIVE TOE CAP

STEEL
(PT) Aço (ES) Acero (FR) Acier (DE) Stahlkappe

SOLE

DIRECT INJECTED PU + RUBBER
(PT) PU Diretamente Injetado + Borracha (ES) PU Inyectado + Caucho (FR) PU Injecté Directement + Nitril (DE) Direkt Eingespritztes PU + Gummi

UPPER RAW MATERIAL

CRAZY HORSE LEATHER
(PT) Pele Crazy Horse (ES) Cuero Crazy Horse (FR) Cuir Crazy Horse (DE) Crazy Horse Leder

LINING MATERIAL

SYMPATEX WATERPROOF MEMBRANE
(PT) Membrana Impermeável Sympatex (ES) Membrana Impermeable Sympatex (FR) Membrane Impermeable Sympatex (DE) Sympatex Wasserdichte Membrane

DAINTREE 2.1

EN ISO 17249:2013 / AC:2014 **CLASS 1**
EN ISO 20345:2011 **CE S3 HRO SRC**

148,41€



\ 1053.90 \

EU 39-48 / UK 6-13 / MP 247-315

EU 39-47 / UK 6-12 / MP 247-317

PROTECTIVE MIDSOLE

STEEL
(PT) Aço (ES) Acero (FR) Acier (DE) Stahlkappe

PROTECTIVE TOE CAP

STEEL
(PT) Aço (ES) Acero (FR) Acier (DE) Stahlkappe

SOLE

DIRECT INJECTED PU + RUBBER
(PT) PU Diretamente Injetado + Borracha (ES) PU Inyectado + Caucho (FR) PU Injecté Directement + Nitril (DE) Direkt Eingespritztes PU + Gummi

UPPER RAW MATERIAL

CRAZY HORSE LEATHER
(PT) Pele Crazy Horse (ES) Cuero Crazy Horse (FR) Cuir Crazy Horse (DE) Crazy Horse Leder

LINING MATERIAL

SYMPATEX WATERPROOF MEMBRANE
(PT) Membrana Impermeável Sympatex (ES) Membrana Impermeable Sympatex (FR) Membrane Impermeable Sympatex (DE) Sympatex Wasserdichte Membrane

196,84€



\ 1053.60 \

SHERWOOD

EN ISO 17249:2013 **CLASS 3**
EN ISO 20345:2011 **CE S3 HRO SRA**

EU 39-47 / UK 6-12 / MP 247-317

PROTECTIVE MIDSOLE

STEEL
(PT) Aço (ES) Acero (FR) Acier (DE) Stahlkappe

PROTECTIVE TOE CAP

STEEL
(PT) Aço (ES) Acero (FR) Acier (DE) Stahlkappe

SOLE

DIRECT INJECTED PU + RUBBER
(PT) PU Diretamente Injetado + Borracha (ES) PU Inyectado + Caucho (FR) PU Injecté Directement + Nitril (DE) Direkt Eingespritztes PU + Gummi

UPPER RAW MATERIAL

FULL GRAIN LEATHER
(PT) Pele de Flor Integral (ES) Cuero Full Grain (FR) Cuir Plein Fleur Grainé (DE) Glattleder

UPPER RAW MATERIAL

NUBUCK LEATHER
(PT) Pele Nubuck (ES) Cuero Nubuck (FR) Cuir Nubuck (DE) Nubuck Leder

LINING MATERIAL

BREATHABLE TEXTILE
(PT) Têxtil Respirável (ES) Textil Respirable (FR) Textile Respirant (DE) Atmungsaktiv Textil

DAINTREE 2.0

EN ISO 17249:2013 / AC:2014 **CLASS 1**
EN ISO 20345:2022 **CE S3 CI HI HRO SRC**

152,78€



\ 1053.80 \



ICELANDICC

EN ISO 20345:2022 CE S3 CI FO LG SR

EU 36-50 / UK 3-14^{1/2} / MP 225-330

134,03€



\ 1625.00 \

PROTECTIVE MIDSOLE

STEEL

(PT) Aço (ES) Acero (FR) Acier (DE) Stahlkappe

PROTECTIVE TOE CAP

COMPOSITE

(PT) Composite (ES) Composite (FR) Composite (DE) Kunststoffkappe

SOLE

DOUBLE DENSITY PU

(PT) Dupla Densidade PU (ES) Doble Densidade PU (FR) Double Densité PU (DE) Zweikomponenten PU

UPPER RAW MATERIAL

FULL GRAIN LEATHER

(PT) Pele de Flor Integral (ES) Cuero Full Grain (FR) Cuir Plein Fleur Grainé (DE) Glattleder

LINING MATERIAL

NATURAL LAMBSKIN

(PT) Pele Natural de Carneiro (ES) Piel de Cordero Natural (FR) Peau de Mouton Naturelle (DE) Natürliches Lamm Futter



WATER REPELLENT UPPER



ANTI-SLIP SOLE

EU 39-48 / UK 6-13 / MP 257-325

NEW BARCELONA

EN ISO 20345:2022 CE S3L CI HI HRO SC SR

53,72€



\ 1052.01 \



RESISTANT UP TO 300°C

PROTECTIVE MIDSOLE

-

PROTECTIVE TOE CAP

STEEL

(PT) Aço (ES) Acero (FR) Acier (DE) Stahlkappe

SOLE

DIRECT INJECTED PU + RUBBER

(PT) PU Diretamente Injetado + Borracha (ES) PU Inyectado + Caucho (FR) PU Injecté Directement + Nitril (DE) Direkt Eingespritztes PU + Gummi

UPPER RAW MATERIAL

FULL GRAIN LEATHER

(PT) Pele de Flor Integral (ES) Cuero Full Grain (FR) Cuir Plein Fleur Grainé (DE) Glattleder

LINING MATERIAL

BREATHABLE TEXTILE

(PT) Têxtil Respirável (ES) Textil Respirable (FR) Textile Respirant (DE) Atmungsaktiv Textil

X6

EN ISO 20345:2022/A1:2022 CE S3 CI HI FO SR

61,22€



\ 1065.52 \

EU 36-47 / UK 3-12 / MP 225-307

PROTECTIVE MIDSOLE

STEEL

(PT) Aço (ES) Acero (FR) Acier (DE) Stahlkappe

PROTECTIVE TOE CAP

STEEL

(PT) Aço (ES) Acero (FR) Acier (DE) Stahlkappe

SOLE

DOUBLE DENSITY PU

(PT) Dupla Densidade PU (ES) Doble Densidade PU (FR) Double Densité PU (DE) Zweikomponenten PU

UPPER RAW MATERIAL

NUBUCK LEATHER

(PT) Pele Nubuck (ES) Cuero Nubuck (FR) Cuir Nubuck (DE) Nubuck Leder

LINING MATERIAL

BREATHABLE TEXTILE

(PT) Têxtil Respirável (ES) Textil Respirable (FR) Textile Respirant (DE) Atmungsaktiv Textil



2 SIDE ZIPS



NATURAL LAMBSKIN



CLIMA CORK SYSTEM



SHOCK ABSORBER



WATER REPELLENT UPPER



RESISTANT UP TO 300°C



WATER REPELLENT UPPER



ANTI-SLIP SOLE



CLIMA CORK SYSTEM



ANTISTATIC

FÉNIX 5.1 PRO

EN ISO 15090:2012 TIPO 2 H13 F2A
 EN ISO 17249:2022 / AC 2014 CLASS 2
 EN ISO 20345:2011 CE S3 WR CI HI AN M HRO SRC

sob consulta



\ 2018.30 \

EU 36-47 / UK 3-12 / MP 225-307

PROTECTIVE MIDSOLE

KEVLAR
 (PT) Kevlar (ES) Kevlar (FR) Kevlar (DE) Kevlar

PROTECTIVE TOE CAP

FIBERGLASS
 (PT) Fibra de Vidro (ES) Fibra de Vidrio (FR) Fibre de Verre (DE) Glasfaser

SOLE

FIREFOX - VIBRAM FIRE-REARADANT RUBBER
 (PT) Borracha Ignifuga - Vibram (ES) Caucho Ignifugo - Vibram (FR) Nitril Ignifuge - Vibram (DE) Feuerhemmender Gummi - Vibram

UPPER RAW MATERIAL

FULL GRAIN LEATHER
 (PT) Pele de Flor Integral (ES) Cuero Full Grain (FR) Cuir Plein Fleur Grainé (DE) Glattleder

LINING MATERIAL

SYMPATEX WATERPROOF MEMBRANE
 (PT) Membrana Impermeável Sympatex (ES) Membrana Impermeable Sympatex (FR) Membrane Impermeable Sympatex (DE) Sympatex Wasserdichte Membrane



ANKLE PROTECTION



METATARSAL PROTECTION



FÉNIX 5.1

EN ISO 15090:2012 TIPO 2 H13 F2A
 EN ISO 20345:2022 CE S3 WR CI HI AN HRO SRC

sob consulta



\ 2018.40 \

EU 36-47 / UK 3-12 / MP 225-307



ANKLE PROTECTION



FLAME 5.1

EN ISO 15090:2012 TIPO 2 H13 F2A
 EN ISO 20345:2022 CE S3 WR CI HI AN HRO SRC



METAL FREE

EU 36-47 / UK 3-12 / MP 225-307

PROTECTIVE MIDSOLE

KEVLAR
 (PT) Kevlar (ES) Kevlar (FR) Kevlar (DE) Kevlar

PROTECTIVE TOE CAP

FIBERGLASS
 (PT) Fibra de Vidro (ES) Fibra de Vidrio (FR) Fibre de Verre (DE) Glasfaser

SOLE

FIREFOX - VIBRAM FIRE-REARADANT RUBBER
 (PT) Borracha Ignifuga - Vibram (ES) Caucho Ignifugo - Vibram (FR) Nitril Ignifuge - Vibram (DE) Feuerhemmender Gummi - Vibram

UPPER RAW MATERIAL

FULL GRAIN LEATHER
 (PT) Pele de Flor Integral (ES) Cuero Full Grain (FR) Cuir Plein Fleur Grainé (DE) Glattleder

LINING MATERIAL

SYMPATEX WATERPROOF MEMBRANE
 (PT) Membrana Impermeável Sympatex (ES) Membrana Impermeable Sympatex (FR) Membrane Impermeable Sympatex (DE) Sympatex Wasserdichte Membrane

sob consulta



\ 2019.00 \





EU 36-47 / UK 3-12 / MP 225-307

PROTECTIVE MIDSOLE
KEVLAR
(PT) Kevlar (ES) Kevlar (FR) Kevlar (DE) Kevlar

PROTECTIVE TOE CAP
FIBERGLASS
(PT) Fibra de Vidro (ES) Fibra de Vidrio (FR) Fibre de Verre (DE) Glasfaser

SOLE
FIREFOX - VIBRAM FIRE-RETTARDANT RUBBER
(PT) Borracha Ignífuga - Vibram (ES) Caucho Ignífugo - Vibram (FR) Nitril Ignifuge - Vibram (DE) Feuerhemmender Gummi - Vibram

UPPER RAW MATERIAL
FULL GRAIN LEATHER + TEXTILE
(PT) Pele de Flor Integral + Têxtil (ES) Cuero Full Grain + Textil (FR) Cuir Plein Fleur Grainé + Textile (DE) Glattleder + Textil

LINING MATERIAL
SYMPATEX WATERPROOF MEMBRANE
(PT) Membrana Impermeável Sympatex (ES) Membrana Impermeable Sympatex (FR) Membrane Impermeable Sympatex (DE) Sympatex Wasserdichte Membrane

PATROL 5.1

EN ISO 15090:2012 TIPO 2 H13 F2A
EN ISO 20345:2022 CE S3 HI CI AN HRO SRC

sob consulta



\ 2076.50 \



METAL FREE

79,47€



\ 1076.85 \

PATROL 2.1

EN ISO 20345:2011 CE 03 HRO SRC WRU



INTERNAL ZIPPER



EU 35-47 / UK 2^{1/2}-12 / MP 217-307

PROTECTIVE MIDSOLE
KEVLAR
(PT) Kevlar (ES) Kevlar (FR) Kevlar (DE) Kevlar

PROTECTIVE TOE CAP
-

SOLE
DIRECT INJECTED PU + RUBBER
(PT) PU Diretamente Injetado + Borracha (ES) PU Inyectado + Caucho (FR) PU Injecté Directement + Nitril (DE) Direkt Eingespritztes PU + Gummi

UPPER RAW MATERIAL
FULL GRAIN LEATHER + TEXTILE
(PT) Pele de Flor Integral + Têxtil (ES) Cuero Full Grain + Textil (FR) Cuir Plein Fleur Grainé + Textile (DE) Glattleder + Textil

LINING MATERIAL
BREATHABLE TEXTILE
(PT) Têxtil Respirável (ES) Textil Respirable (FR) Textile Respirant (DE) Atmungsaktiv Textil

SPACE TROOPER

EN ISO 20347:2022 CE O2 PS SR WR AN

106,22€



\ 1610.00 \



EU 36-47 / UK 3-12 / MP 225-307

PROTECTIVE MIDSOLE
KEVLAR
(PT) Kevlar (ES) Kevlar (FR) Kevlar (DE) Kevlar

PROTECTIVE TOE CAP
-

SOLE
TPU + EVA PHYLON
(PT) TPU + Eva Phylon (ES) TPU + Eva Phylon (FR) TPU + Eva Phylon (DE) TPU + Eva Phylon

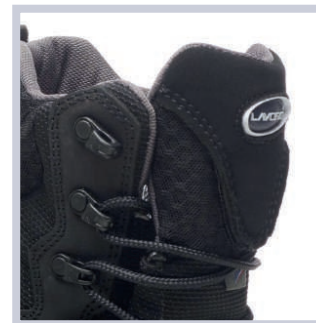
UPPER RAW MATERIAL
HI-TECH TEXTILE
(PT) Têxtil Hi-Tech (ES) Textil Hi-Tech (FR) Textile Hi-Tech (DE) High-Tech Textil

LINING MATERIAL
SYMPATEX WATERPROOF MEMBRANE
(PT) Membrana Impermeável Sympatex (ES) Membrana Impermeable Sympatex (FR) Membrane Impermeable Sympatex (DE) Sympatex Wasserdichte Membrane

S.A.S. BLACK BOOT

EN ISO 20347:2022 CE 07 S HRO SR

sob consulta



LACICE - SHOE LACES STORAGE SYSTEM



SOLE
DIRECT INJECTED PU + VIBRAM
(PT) PU Diretamente Injetado + Vibram (ES) PU Inyectado + Vibram (FR) PU Injecté Directement + Vibram (DE) Direkt Eingespritztes PU + Vibram



\ 1675.10 \



LYNX CLAY

EN ISO 20345:2022 CE S3L CI HI FO SR

64,66€



\ 1257.82 \

EU 35-42 / UK 2^{1/2}-8 / MP 217-370

PROTECTIVE MIDSOLE

KEVLAR
(PT) Kevlar (ES) Kevlar (FR) Kevlar (DE) Kevlar

PROTECTIVE TOE CAP

COMPOSITE
(PT) Composite (ES) Composite (FR) Composite (DE) Kunststoffkappe

SOLE

DOUBLE DENSITY PU
(PT) Dupla Densidade PU (ES) Doble Densidade PU
(FR) Doble Densité PU (DE) Zweikomponenten PU

UPPER RAW MATERIAL

BREATHABLE TEXTILE
(PT) Têxtil Respirável (ES) Textil Respirable (FR) Textile
Respirant (DE) Atmungsaktiv Textil

LINING MATERIAL

BREATHABLE TEXTILE
(PT) Têxtil Respirável (ES) Textil Respirable (FR) Textile
Respirant (DE) Atmungsaktiv Textil

LYNX TERRACOTA

EN ISO 20345:2022 CE S3L CI HI FO SR

64,66€



\ 1257.84 \

BIANCA

EN ISO 20345:2011 CE S3S CI FO SR

68,41€



\ 1118.10 \

EU 36-42 / UK 3-8 / MP 225-270

PROTECTIVE MIDSOLE

KEVLAR
(PT) Kevlar (ES) Kevlar (FR) Kevlar (DE) Kevlar

PROTECTIVE TOE CAP

STEEL
(PT) Aço (ES) Acero (FR) Acier (DE) Stahlkappe

SOLE

DIRECT INJECTED PU
(PT) PU Diretamente Injetado (ES) PU Inyectado Directo
(FR) PU Injecté Directement (DE) Direkt Eingespritztes PU

UPPER RAW MATERIAL

FULL GRAIN LEATHER
(PT) Pele de Flor Integral (ES) Cuero Full Grain (FR) Cuir Plein
Fleur Grainé (DE) Glattleder

LINING MATERIAL

ANILINE LEATHER
(PT) Pele Anilina (ES) Cuero Anilina (FR) Cuir Aniline
(DE) Aniline Leder

68,41€



\ 1153.10 \

EVA

EN ISO 20345:2011 CE S2P SRC



LUCY

EN ISO 20345:2011 CE S3S CI FO SR

73,72€



EU 36-42 / UK 3-8 / MP 225-270

PROTECTIVE MIDSOLE
KEVLAR
(PT) Kevlar (ES) Kevlar (FR) Kevlar (DE) Kevlar

PROTECTIVE TOE CAP
STEEL
(PT) Aço (ES) Acero (FR) Acier (DE) Stahlkappe

SOLE
DIRECT INJECTED PU
(PT) PU Diretamente Injetado (ES) PU Inyectado Directo (FR) PU Injecté Directement (DE) Direkt Eingespritztes PU

UPPER RAW MATERIAL
FULL GRAIN LEATHER
(PT) Pele de Flor Integral (ES) Cuero Full Grain (FR) Cuir Plein Fleur Grainé (DE) Glattleder

LINING MATERIAL
ANILINE LEATHER
(PT) Pele Anilina (ES) Cuero Anilina (FR) Cuir Aniline (DE) Aniline Leder

\ 1021.10 \

73,72€



\ 1016.10 \

73,72€



\ 1036.30 \

CYNDI
EN ISO 20345:2011 CE S3S CI FO SR

SANDY
EN ISO 20345:2011 CE S2P SRC

ACCESSORIES

SPODOS 3V SIZE 36-47



FLAT FEET



\ 9999.95 \ **12,47€**



NORMAL FEET



\ 9999.96 \ **12,47€**



ARCH FEET



\ 9999.97 \ **12,47€**

FEATURES

<p>HEALTH OF YOUR FEET</p> <ul style="list-style-type: none"> Anti-Microbial Active Carbon Thermoregulatory Effect Steam Permeable 100% Breathable Washable 	<p>THINKING ABOUT COMFORT</p> <ul style="list-style-type: none"> Anti-Fatigue Extra Light High Absorption Capacity High Memory Capacity Different Densities 	<p>ECOFRIENDLY</p> <ul style="list-style-type: none"> Made from Recycled Materials <p>ECOFRIENDLY</p> <ul style="list-style-type: none"> Made from Recycled Materials
--	---	---

SIZE 35-38 / 43-47 **7,47€**

PRO SOCKS

\ 9999.79 \



SIZE 39-42 / 43-47 **3,41€**

ECO SOCKS

\ 9999.73 \



SIZE 36-47 **7,47€**



\ 9999.12 \

CHROMIUM FREE LEATHER

Cork and Natural Leather
Breathable
Thermoregulatory Effect

sob consulta



\ 9999 \

LAVORO X-MAX

Selected premium materials and accurate design to keep your feet feeling cool, dry and fresher for longer.

