

UMA JORNADA DE TRABALHO MAIS SEGURA TODOS OS DIAS

# LAVORO<sup>®</sup>

ENGINEERING LIFE



SAFETY FOOTWEAR  
2025

**ARIES**

EN ISO 20345:2022/A1:2024 CE S3S HI CI FO SR

**64,66€**



\ 1202.01 \

EU 35-48 / UK 2<sup>1/5</sup>-13 / MP 217-315

**PROTECTIVE MIDSOLE**  
KEVLAR  
(PT) Kevlar (ES) Kevlar (FR) Kevlar (DE) Kevlar

**PROTECTIVE TOE CAP**  
FIBERGLASS  
(PT) Fibra de Vidro (ES) Fibra de Vidrio (FR) Fibre de Verre (DE) Glasfaser

**SOLE**  
DOUBLE DENSITY PU W/ MSI  
(PT) Dupla Densidade PU c/ MSI (ES) Doble Densidade PU con MSI (FR) Double Densité PU avec MSI (DE) Zweikomponenten PU mit MSI

**UPPER RAW MATERIAL**  
NUBUCK LEATHER WR W/ BREATHABLE TEXTILE  
(PT) Couro Nobuck WR com Têxtil Respirável (ES) Cuero Nobuck WR con Têxtil Respirable (FR) Cuir Nubuck WR avec Textile Respirant (DE) Nubukleder WR mit Atmungsaktivem Textil

**LINING MATERIAL**  
AERPLUSSTECHTEX  
(PT) Aerplus TechTex (ES) Aerplus TechTex (FR) Aerplus TechTex (DE) Aerplus TechTex

**DRACO**

EN ISO 20345:2022/A1:2024 CE S1PS HI CI FO SR

**80,91€**



\ 1202.31 \

EU 35-48 / UK 2<sup>1/5</sup>-13 / MP 217-315

**PROTECTIVE MIDSOLE**  
KEVLAR  
(PT) Kevlar (ES) Kevlar (FR) Kevlar (DE) Kevlar

**PROTECTIVE TOE CAP**  
FIBERGLASS  
(PT) Fibra de Vidrio (ES) Fibra de Vidrio (FR) Fibre de Verre (DE) Glasfaser

**SOLE**  
DOUBLE DENSITY PU W/ MSI  
(PT) Dupla Densidade PU c/ MSI (ES) Doble Densidade PU con MSI (FR) Double Densité PU avec MSI (DE) Zweikomponenten PU mit MSI

**UPPER RAW MATERIAL**  
NUBUCK LEATHER WR 20/22 + BREEZEMESH 3D  
(PT) Couro Nobuck com Têxtil Respirável 3D (ES) Cuero Nobuck con Têxtil Respirable 3D (FR) Cuir Nubuck avec Textile Respirant 3D (DE) Nubukleder mit Atmungsaktivem Textil 3D

**LINING MATERIAL**  
AERPLUSSTECHTEX  
(PT) Aerplus TechTex (ES) Aerplus TechTex (FR) Aerplus TechTex (DE) Aerplus TechTex

**71,53€**



\ 1002.01 \

**ANDROMEDA**

EN ISO 20345:2022/A1 2024 CE S3S HI CI FO SR



**80,91€**



\ 1202.11 \

**AURIGA**

EN ISO 20345:2022/A1:2024 CE S3S HI CI FO SR

**PROTECTIVE MIDSOLE**  
KEVLAR  
(PT) Kevlar (ES) Kevlar (FR) Kevlar (DE) Kevlar

**PROTECTIVE TOE CAP**  
FIBERGLASS  
(PT) Fibra de Vidrio (ES) Fibra de Vidrio (FR) Fibre de Verre (DE) Glasfaser

**SOLE**  
DOUBLE DENSITY PU W/ MSI  
(PT) Dupla Densidade PU c/ MSI (ES) Doble Densidade PU con MSI (FR) Double Densité PU avec MSI (DE) Zweikomponenten PU mit MSI

**UPPER RAW MATERIAL**  
WR BREATHABLE HI-TECH MFN  
(PT) Tecnologia MFN (ES) Tecnologia MFN (FR) Technologie MFN (DE) Atmungsaktiv

**LINING MATERIAL**  
AERPLUSSTECHTEX + SYMPATEX MEMBRANE  
(PT) Aerplus TechTex + Membrana Sympatex (ES) Aerplus TechTex + Membrana Sympatex (FR) Aerplus TechTex + Membrane Sympatex (DE) Aerplus TechTex + Sympatex-Membran

**80,91€**



\ 1202.21 \

**HYDRA**

EN ISO 20345:2022/A1:2024 CE S7S HI CI FO SR

**87,78€**



\ 1002.11 \

**HERCULES**

EN ISO 20345:2022/A1:2024 CE S7S HI CI FO SR



**TAURUS**

EN ISO 20345:2022/A1:2024 CE S7S HI CI FO SR

**97,16€**



**QUICK  
RELEASE  
SYSTEM**



\ 1228.20 \

EU 35-48 / UK 2<sup>1/5</sup>-13 / MP 217-315

**PROTECTIVE MIDSOLE**

KEVLAR  
(PT) Kevlar (ES) Kevlar (FR) Kevlar (DE) Kevlar

**PROTECTIVE TOE CAP**

FIBERGLASS  
(PT) Fibra de Vidro (ES) Fibra de Vidrio (FR) Fibre de Verre (DE) Glasfaser

**SOLE**

DOUBLE DENSITY PU W/ MSI  
(PT) Dupla Densidade PU c/ MSI (ES) Doble Densidade PU con MSI (FR) Double Densité PU avec MSI (DE) Zweikomponenten PU mit MSI

**UPPER RAW MATERIAL**

WR BREATHABLE HI-TECH MFN  
(PT) Tecnologia MFN (ES) Tecnología MFN (FR) Technologie MFN (DE) MFN Technologie

**LINING MATERIAL**

AERPLUS TECHTEX + SYMPATEX MEMBRANE  
(PT) Aerplus TechTex + Membrana Sympatex (ES) Aerplus TechTex + Membrana Sympatex (FR) Aerplus TechTex + Membrane Sympatex (DE) Aerplus TechTex + Sympatex-Membran

**104,03€**



**QUICK  
RELEASE  
SYSTEM**



\ 1028.20 \

**SAGITARIUS**

EN ISO 20345:2022/A1:2024 CE S7S HI CI FO SR

**SLIP IN.  
EASY.  
FAST.**

**64,66€**



\ 1241.00 \

**CORVUS**

EN ISO 20345:2022/A1:2024 CE S3S HI CI FO SR



**CRATER**

EN ISO 20345:2022/A1:2024 CE S3S HI CI FO SR

**64,66€**

EU 35-48 / UK 2<sup>1/5</sup>-13 / MP 217-315

**PROTECTIVE MIDSOLE**

KEVLAR  
(PT) Kevlar (ES) Kevlar (FR) Kevlar (DE) Kevlar

**PROTECTIVE TOE CAP**

FIBERGLASS  
(PT) Fibra de Vidro (ES) Fibra de Vidrio (FR) Fibre de Verre (DE) Glasfaser

**SOLE**

DOUBLE DENSITY PU W/ MSI  
(PT) Dupla Densidade PU c/ MSI (ES) Doble Densidade PU con MSI (FR) Double Densité PU avec MSI (DE) Zweikomponenten PU mit MSI

**UPPER RAW MATERIAL**

SCBD HAR TEXTILE  
(PT) Têxtil SCBD HAR (ES) Textil SCBD HAR (FR) Textile SCBD HAIR (DE) SCBD HAIR Textile

**LINING MATERIAL**

DRYLEX PLUS 3SW  
(PT) Drylex Plus 3SW (ES) Drylex Plus 3SW (FR) Drylex Plus 3SW (DE) Drylex Plus 3SW



\ 1231.06 \

**71,53€**



\ 1031.06 \

**CAPRICORNIUS**

EN ISO 20345:2022/A1:2024 CE S3S HI CI FO SR



PISCES

EN ISO 20345:2022/A1:2024 CE S3S HI CI FO SR

EU 35-48 / UK 2<sup>1/5</sup>-13 / MP 217-315

67,78€



\ 1232.08 \

PROTECTIVE MIDSOLE

KEVLAR  
(PT) Kevlar (ES) Kevlar (FR) Kevlar (DE) Kevlar

PROTECTIVE TOE CAP

FIBERGLASS  
(PT) Fibra de Vidro (ES) Fibra de Vidrio (FR) Fibre de Verre (DE) Glasfaser

SOLE

DOUBLE DENSITY PU W/ MSI  
(PT) Dupla Densidade PU c/ MSI (ES) Doble Densidade PU con MSI (FR) Double Densité PU avec MSI (DE) Zweikomponenten PU mit MSI

UPPER RAW MATERIAL

GUAPA UR TEXTILE  
(PT) Textil GUAPA UR (ES) Textil GUAPA UR (FR) Textile GUAPA UR (DE) GUAPA-UR-Textil

LINING MATERIAL

AERPLUS TECHTEX  
(PT) Aerplus TechTex (ES) Aerplus TechTex (FR) Aerplus TechTex (DE) Aerplus TechTex

LEO

EN ISO 20345:2022/A1:2024 CE S3S HI CI FO SR

67,78€



\ 1236.02 \

EU 35-48 / UK 2<sup>1/5</sup>-13 / MP 217-315

PROTECTIVE MIDSOLE

KEVLAR  
(PT) Kevlar (ES) Kevlar (FR) Kevlar (DE) Kevlar

PROTECTIVE TOE CAP

FIBERGLASS  
(PT) Fibra de Vidro (ES) Fibra de Vidrio (FR) Fibre de Verre (DE) Glasfaser

SOLE

DOUBLE DENSITY PU W/ MSI  
(PT) Dupla Densidade PU c/ MSI (ES) Doble Densidade PU con MSI (FR) Double Densité PU avec MSI (DE) Zweikomponenten PU mit MSI

UPPER RAW MATERIAL

VHQ WAXED NUBUCK LEATHER  
(PT) Pele Nubuck Encerada VHQ (ES) VHQ gewachstes Nubukleder (FR) Cuir nubuck ciré VHQ (DE) Piel nubuck encerada VHQ

LINING MATERIAL

ANILINE LEATHER  
(PT) Pele Anilina (ES) Piel Anilina (FR) Cuir Aniline (DE) Anilinleder



GUAPA

Developed with advanced protective technology, this upper material brings a new level of performance to safety footwear. Its innovative reinforced structure offers outstanding abrasion resistance, while remaining impressively lightweight and breathable. This ensures long-lasting protection without adding unnecessary weight, keeping the wearer comfortable throughout demanding workdays.

Engineered to withstand intense friction and heavy use, it surpasses 8,000 cycles in abrasion testing - delivering durability that professionals can rely on in tough environments.



67,78€



\ 1236.06 \

LIBRA

EN ISO 20345:2022/A1:2024 CE S3S HI CI FO SR



**ECLIPSE BLACK**

EN ISO 20345:2011/A1 2024 CE S7S HI CI SR HRO FO LG

**113,09€**



\ 1068.40 \

EU 39-46 / UK 6-13 / MP 247-315

**PROTECTIVE MIDSOLE**

KEVLAR  
(PT) Kevlar (ES) Kevlar (FR) Kevlar (DE) Kevlar

**PROTECTIVE TOE CAP**

FIBERGLASS  
(PT) Fibra de Vidro (ES) Fibra de Vidrio (FR) Fibre de Verre (DE) Glasfaser

**SOLE**

ShieldCore™ (RUBBER + SCF + CCS + PU)  
(PT) Borracha + SCF + CCS + PU (ES) Caucho + SCF+CCS + PU (FR) Caoutchouc + SCF + CCS + PU (DE) Gummi + SCF + CCS + PU

**UPPER RAW MATERIAL**

NUBUCK LEATHER WR 20/22  
(PT) Couro Nubuck WR 20/22 (ES) Cuero Nubuck WR 20/22 (FR) Cuir NUBUCK WR 20/22 (DE) Nubukleder WR 20/22

**LINING MATERIAL**

SOFT ANILINE LEATHER + SYMPATEX MEMBRANE  
(PT) Pele Anilina Macia + Membrana Sympatex (ES) Piel Anilina Suave + Membrana Sympatex (FR) Cuir Aniline Souple + Membrane Sympatex (DE) Weiches Anilinleder + Sympatex Membrane

**ARGYLL**

EN ISO 17249:2013/AC:2014 CLASS 1 CE S3 SRC HRO HI CI FO

**187,47€**



\ 1069.01 \

EU 39-46 / UK 6-13 / MP 247-315

**PROTECTIVE MIDSOLE**

KEVLAR  
(PT) Kevlar (ES) Kevlar (FR) Kevlar (DE) Kevlar

**PROTECTIVE TOE CAP**

STEEL  
(PT) Aço (ES) Acero (FR) Acier (DE) Stahlkappe

**SOLE**

SHIELDCORE™ (RUBBER + SCF + CCS + PU)  
(PT) Borracha + SCF + CCS + PU (ES) Caucho + SCF+CCS + PU (FR) Caoutchouc + SCF + CCS + PU (DE) Gummi + SCF + CCS + PU

**UPPER RAW MATERIAL**

NUBUCK LEATHER WR 20/22  
(PT) Couro Nubuck WR 20/22 (ES) Cuero Nubuck WR 20/22 (FR) Cuir Nubuck WR 20/22 (DE) Nubukleder WR 20/22

**LINING MATERIAL**

AERPLUS TECHTEX. TECHNICAL TEXTILE 100% PES  
(PT) Têxtil técnico Aerplus (ES) Textil técnico Aerplus (FR) Textile technique Aerplus (DE) Technisches Textil Aerplus

**113,09€**



\ 1068.42 \



**ECLIPSE BROWN**

EN ISO 20345:2022/A1 2024 CE S7S HI CI FO SR HRO FO LG

**214,34€**



\ 1069.07 \

**GALLOWAY**

EN ISO 17249:2013/AC:2014 CLASS 2  
CE S7 SRC HRO HI CI FO



**229,97€**



\ 1069.08 \

**KIELDER**

EN ISO 17249:2013/AC:2014 CLASS 3  
CE S7 SRC HRO HI CI FO



**RAVEN SPEED**

EN ISO 20345:2022 CE S3S CI HI HRO SR

**118,09€**



**QUICK  
RELEASE  
SYSTEM**

EU 39-48 / UK 6-13 / MP 247-315

**PROTECTIVE MIDSOLE**

DYNEEMA

(PT) Dyneema (ES) Dyneema (FR) Dyneema (DE) Dyneema

**PROTECTIVE TOE CAP**

FIBERGLASS

(PT) Fibra de Vidro (ES) Fibra de Vidrio (FR) Fibre de Verre (DE) Glasfaser

**SOLE**

SUPERNOVA SCF + RUBBER

(PT) Supernova SCF + Borracha (ES) Supernova SCF + Caucho (FR) Supernova + Nitril (DE) Supernova + Gummi

**UPPER RAW MATERIAL**

RECYCLED TEXTILE (16%)

(PT) Têxtil Reciclado (ES) Textil Reciclado (FR) Textile Recyclé (DE) Recyceltes Textiel

**LINING MATERIAL**

BREATHABLE TEXTILE

(PT) Têxtil Respirável (ES) Textil Respirable (FR) Textile Respirant (DE) Atmungsaktiv Textil



\ 1209.36 \

**FALCON SPEED GREY**

EN ISO 20345:2022 CE S3S CI HI HRO SR

**118,09€**



**QUICK  
RELEASE  
SYSTEM**

EU 39-48 / UK 6-13 / MP 247-315

**PROTECTIVE MIDSOLE**

DYNEEMA

(PT) Dyneema (ES) Dyneema (FR) Dyneema (DE) Dyneema

**PROTECTIVE TOE CAP**

FIBERGLASS

(PT) Fibra de Vidro (ES) Fibra de Vidrio (FR) Fibre de Verre (DE) Glasfaser

**SOLE**

SUPER CRITICAL FOAM + RUBBER

(PT) Supernova SCF + Borracha (ES) Supernova SCF + Caucho (FR) Supernova + Nitril (DE) Supernova + Gummi

**UPPER RAW MATERIAL**

RECYCLED TEXTILE (16%)

(PT) Têxtil Reciclado (ES) Textil Reciclado (FR) Textile Recyclé (DE) Recyceltes Textiel

**LINING MATERIAL**

BREATHABLE TEXTILE

(PT) Têxtil Respirável (ES) Textil Respirable (FR) Textile Respirant (DE) Atmungsaktiv Textil



\ 1209.16 \

**101,22€**



\ 1209.46 \

**RAVEN**

EN ISO 20345:2022 CE S3S HI CI HRO SR

**101,22€**



\ 1209.06 \

**FALCON GREY**

EN ISO 20345:2022 CE S3S CI HI HRO SR



**STARGATE BLACK**

EN ISO 20345:2022/A1 2024 CE S2 PL SR

**86,84€**



\ 1201.00 \

EU 35-47 / UK 2<sup>nd</sup>-12 / MP 217-317

**PROTECTIVE MIDSOLE**  
KEVLAR  
(PT) Kevlar (ES) Kevlar (FR) Kevlar (DE) Kevlar

**PROTECTIVE TOE CAP**  
COMPOSITE  
(PT) Composite (ES) Composite (FR) Composite (DE) Kunststoffkappe

**SOLE**  
TPU + EVA PHYLON  
(PT) TPU + Eva Phylon (ES) TPU + Eva Phylon (FR) TPU + Eva Phylon (DE) TPU + Eva Phylon

**UPPER RAW MATERIAL**  
HI-TECH TEXTILE  
(PT) Têxtil Hi-Tech (ES) Textil Hi-Tech (FR) Textile Hi-Tech (DE) High-Tech Textiel

**LINING MATERIAL**  
BREATHABLE TEXTILE  
(PT) Têxtil Respirável (ES) Textil Respirable (FR) Textile Respirant (DE) Atmungsaktiv Textil

EU 33-47 / UK 1-12 / MP 202-307

**PROTECTIVE MIDSOLE**  
KEVLAR  
(PT) Kevlar (ES) Kevlar (FR) Kevlar (DE) Kevlar

**PROTECTIVE TOE CAP**  
COMPOSITE  
(PT) Composite (ES) Composite (FR) Composite (DE) Kunststoffkappe

**SOLE**  
TPU + EVA PHYLON  
(PT) TPU + Eva Phylon (ES) TPU + Eva Phylon (FR) TPU + Eva Phylon (DE) TPU + Eva Phylon

**UPPER RAW MATERIAL**  
WR BREATHABLE HI-TECH MF  
(PT) Tecnologia MF (ES) Tecnología MF (FR) Technologie MF (DE) MF Technologie

**LINING MATERIAL**  
DRYLEX TEXTILE  
(PT) Têxtil Drylex (ES) Textil Drylex (FR) Textile Drylex (DE) Drylex Textil

**STARDUST BLUE**

EN ISO 20345:2011 CE S1 P WRU SRC

**114,97€**



\ 1200.10 \



EXTRA CUSHIONING



SANDAL // EXTRA BREATHABLE

EU 36-47 / UK 3-12 / MP 225-307

**114,97€**



\ 1400.10 \

**STARSIGHT BLUE**  
EN ISO 20345:2011 CE S1 P SRC

EU 35-47 / UK 2<sup>nd</sup>-12 / MP 227-307

**90,59€**



\ 1200.00 \

**STARLIGHT BLUE**  
EN ISO 20345: 2011 CE S1 P WRU SRC



**GLADE BLUE**

EN ISO 20345:2011 CE S3 CI HI SRC

**67,47€**



\ 1227.01 \

EU 36-48 / UK 3-13 / MP 225-315

**PROTECTIVE MIDSOLE**

KEVLAR  
(PT) Kevlar (ES) Kevlar (FR) Kevlar (DE) Kevlar

**PROTECTIVE TOE CAP**

FIBERGLASS  
(PT) Fibra de Vidro (ES) Fibra de Vidrio (FR) Fibre de Verre (DE) Glasfaser

**SOLE**

DOUBLE DENSITY PU  
(PT) Dupla Densidade PU (ES) Doble Densidade PU (FR) Double Densité PU (DE) Zweikomponenten PU

**UPPER RAW MATERIAL**

WR BREATHABLE HI-TECH MF  
(PT) Tecnologia MF (ES) Tecnología MF (FR) Technologie MF (DE) MF Technologie

**LINING MATERIAL**

BREATHABLE TEXTILE  
(PT) Têxtil Respirável (ES) Textil Respirable (FR) Textile Respirant (DE) Atmungsaktiv

**CANYON BLACK**

EN ISO 20345:2011 CE S3 CI HI SRC

**69,66€**



\ 1025.00 \

EU 36-48 / UK 3-13 / MP 225-315

**PROTECTIVE MIDSOLE**

KEVLAR  
(PT) Kevlar (ES) Kevlar (FR) Kevlar (DE) Kevlar

**PROTECTIVE TOE CAP**

FIBERGLASS  
(PT) Fibra de Vidro (ES) Fibra de Vidrio (FR) Fibre de Verre (DE) Glasfaser

**SOLE**

DOUBLE DENSITY PU  
(PT) Dupla Densidade PU (ES) Doble Densidade PU (FR) Double Densité PU (DE) Zweikomponenten PU

**UPPER RAW MATERIAL**

NUBUCK LEATHER  
(PT) Pele Nubuck (ES) Cuero Nubuck (FR) Cuir Nubuck (DE) Schwartz Nubuckleer

**LINING MATERIAL**

DRYLEX TEXTILE  
(PT) Têxtil Drylex (ES) Textil Drylex (FR) Textile Drylex (DE) Drylex Textil

**74,34€**



\ 1027.01 \

**MEADOW BLUE**

EN ISO 20345:2011 CE S3 CI HI SRC

**84,34€**



QUICK RELEASE SYSTEM



\ 1027.16 \

**GLADE SPEED GREY**

EN ISO 20345:2011 CE S3 CI HI SRC

**91,22€**



QUICK RELEASE SYSTEM



\ 1027.16 \

**GLADE SPEED GREY**

EN ISO 20345:2011 CE S3 CI HI SRC

**62,47€**



\ 1225.00 \

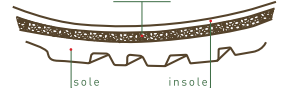
**JASPER**

EN ISO 20345:2011 CE S3 CI HI SRC



CLIMA CORK SYSTEM

cork layer



**SNOWMASS**

EN ISO 20345:2011 CE S3 WR CI HI SRC

**79,97€**



Available with metatarsal protection.  
Ref. 1025.20



\ 1025.10 \

EU 36-48 / UK 3-13 / MP 225-315

- PROTECTIVE MIDSOLE**  
KEVLAR  
(PT) Kevlar (ES) Kevlar (FR) Kevlar (DE) Kevlar
- PROTECTIVE TOE CAP**  
FIBERGLASS  
(PT) Fibra de Vidro (ES) Fibra de Vidrio (FR) Fibre de Verre (DE) Glasfaser
- SOLE**  
DOUBLE DENSITY PU  
(PT) Dupla Densidade PU (ES) Doble Densidade PU (FR) Double Densité PU (DE) Zweikomponenten PU
- UPPER RAW MATERIAL**  
NUBUCK LEATHER  
(PT) Pele Nubuck (ES) Cuero Nubuck (FR) Cuir Nubuck (DE) Schwartz Nubuckleer
- LINING MATERIAL**  
AQUATEX WATERPROOF MEMBRANE  
(PT) Membrana Impermeável Aquatex (ES) Membrana Impermeable Aquatex (FR) Membrane Impermeable Aquatex (DE) Aquatex Wasserdichte Membrane

**YOSEMITE**

EN ISO 20345:2011 CE S3 CI HI SRC

**69,66€**



\ 1026.42 \

EU 39-48 / UK 6-13 / MP 247-315

- PROTECTIVE MIDSOLE**  
KEVLAR  
(PT) Kevlar (ES) Kevlar (FR) Kevlar (DE) Kevlar
- PROTECTIVE TOE CAP**  
FIBERGLASS  
(PT) Fibra de Vidro (ES) Fibra de Vidrio (FR) Fibre de Verre (DE) Glasfaser
- SOLE**  
DOUBLE DENSITY PU  
(PT) Dupla Densidade PU (ES) Doble Densidade PU (FR) Double Densité PU (DE) Zweikomponenten PU
- UPPER RAW MATERIAL**  
WR FLOATER COGNAC  
(PT) WR Floater Cognac (ES) Coñaac Floater WR (FR) Cuir Plein Fleur WR Cognac (DE) WR Floater Cognac
- LINING MATERIAL**  
BREATHABLE DRYLEX TEXTILE  
(PT) Têxtil Dry-Tex (ES) Textil Dry-Tex (FR) Textile Dry-Tex (DE) Dry-Tex Textil

EU 39-48 / UK 6-13 / MP 257-315

**101,53€**



\ 1025.25 \

**YELLOWSTONE M**  
EN ISO 20345:2011 CE S3 WR CI HI M SRC



METATARSAL PROTECTION

**100,91€**



\ 1674.62 \

**APALACHE**  
EN ISO 20345: 2011 CE S3 WR CI HI SRC



EU 36-48 / UK 3-13 / MP 235-315



FIORDLAND

EN ISO 20345:2022 CE S3L CI HI FO SR

97,47€



QUICK  
RELEASE  
SYSTEM



\ 1025.35 \



EU 36-46 / UK 3-13 / MP 225-315

PROTECTIVE MIDSOLE  
KEVLAR

(PT) Kevlar (ES) Kevlar (FR) Kevlar (DE) Kevlar

PROTECTIVE TOE CAP  
FIBERGLASS

(PT) Fibra de Vidro (ES) Fibra de Vidrio (FR) Fibre de Verre (DE) Glasfaser

SOLE

DOUBLE DENSITY PU

(PT) Dupla Densidade PU (ES) Doble Densidade PU (FR) Double Densité PU (DE) Zweikomponenten PU

UPPER RAW MATERIAL

NUBUCK LEATHER

(PT) Pele Nubuck (ES) Cuero Nobuck (FR) Cuir Nubuck (DE) Schwartz Nubuckleer

LINING MATERIAL

NATURAL LAMBSKIN

(PT) Pele Natural de Carneiro (ES) Piel de Cordero Natural (FR) Peau de Mouton Naturelle (DE) Natürliches Lamm Futter



VERY HIGH QUALITY

CASCADES BROWN 23

EN ISO 20345:2022 CE S7L CI HI HRO SC SR

98,72€



\ 1024.32 \

EU 39-47 / UK 6-12 / MP 247-307

PROTECTIVE MIDSOLE  
KEVLAR

(PT) Kevlar (ES) Kevlar (FR) Kevlar (DE) Kevlar

PROTECTIVE TOE CAP  
FIBERGLASS

(PT) Fibra de Vidro (ES) Fibra de Vidrio (FR) Fibre de Verre (DE) Glasfaser

SOLE

DIRECT INJECTED PU + VIBRAM

(PT) PU Diretamente Injetado + Vibram (ES) PU Inyectado + Vibram (FR) PU Injecté Directement + Vibram (DE) Direkt Eingespritztes PU + Vibram

UPPER RAW MATERIAL

CRAZY HORSE LEATHER

(PT) Pele Crazy Horse (ES) Cuero Crazy Horse (FR) Cuir Crazy Horse (DE) Crazy Horse Leder

LINING MATERIAL

SYMPATEX WATERPROOF MEMBRANE

(PT) Membrana Impermeável Sympatex (ES) Membrana Impermeable Sympatex (FR) Membrane Impermeable Sympatex (DE) Sympatex Wasserdichte



EU 36-47 / UK 3-12 / MP 225-307

PROTECTIVE MIDSOLE

KEVLAR

(PT) Kevlar (ES) Kevlar (FR) Kevlar (DE) Kevlar

PROTECTIVE TOE CAP

-

SOLE

DOUBLE DENSITY PU

(PT) Dupla Densidade PU (ES) Doble Densidade PU (FR) Double Densité PU (DE) Zweikomponenten PU

UPPER RAW MATERIAL

NUBUCK LEATHER

(PT) Pele Nubuck (ES) Cuero Nobuck (FR) Cuir Nubuck (DE) Zohwartz Nubuckleer

LINING MATERIAL

AQUATEX WATERPROOF MEMBRANE

(PT) Membrana Impermeável Aquatex (ES) Membrana Impermeable Aquatex (FR) Membrane Impermeable Aquatex (DE) Aquatex Waserdichte Membrane



64,97€



\ 1025.12 \

PRADO

EN ISO 20347:2011 CE 03 HI CI SRC



98,72€



\ 1024.36 \

CASCADES GREY 23

EN ISO 20345:2011 CE S7L HI CI HRO SC SR



METAL FREE

VERY HIGH QUALITY

**JABBA**

EN ISO 20345:2011 CE S3 SRC

**80,28€**



\ 1203.06 \

EU 35-48 / UK 2<sup>1/2</sup>-13 / MP 217-315

**PROTECTIVE MIDSOLE**

**KEVLAR**

(PT) Kevlar (ES) Kevlar (FR) Kevlar (DE) Kevlar

**PROTECTIVE TOE CAP**

**COMPOSITE**

(PT) Composite (ES) Composite (FR) Composite (DE) Kunststoffkappe

**SOLE**

**DOUBLE DENSITY PU**

(PT) Dupla Densidade PU (ES) Doble Densidade PU (FR) Double Densité PU (DE) Zweikomponenten PU

**UPPER RAW MATERIAL**

**K3D TEXTILE**

(PT) Têxtil K3D (ES) Textil K3D (FR) Textile K3D (DE) K3D Textil

**LINING MATERIAL**

**BREATHABLE DRYLEX TEXTILE**

(PT) Têxtil Dry-Tex (ES) Textil Dry-Tex (FR) Textile Dry-Tex (DE) Dry-Tex Textil

**YODA TAUPE FL**

EN ISO 20345:2022 CE S3L CI HI HRO SR FO

**76,53€**



\ 1204.12 \

EU 35-48 / UK 2<sup>1/2</sup>-13 / MP 217-315

**PROTECTIVE MIDSOLE**

**KEVLAR**

(PT) Kevlar (ES) Kevlar (FR) Kevlar (DE) Kevlar

**PROTECTIVE TOE CAP**

**COMPOSITE**

(PT) Composite (ES) Composite (FR) Composite (DE) Kunststoffkappe

**SOLE**

**DIRECT INJECTED PU + RUBBER**

(PT) PU Diretamente Injetado + Borracha (ES) PU Inyectado + Caucho (FR) PU Injecté Directement + Nitril (DE) Direkt Eingespritztes PU + Gummi

**UPPER RAW MATERIAL**

**NATURAL SMOOTH LEATHER**

(PT) Pele Natural Macia (ES) Piel Natural Macia (FR) Cuir Souple Naturel (DE) Natürliches Weiches Leder

**LINING MATERIAL**

**LEATHER**

(PT) Pele (ES) Piel (FR) Cuir (DE) Leder



**80,28€**



\ 1203.11 \



BETTER FITTING

**CHEWIE 22**

EN ISO 20345:2011 CE S3 SRC

**82,78€**



\ 1204.12 \

**LANDO TAUPE FL**

EN ISO 20345:2022 CE S3L CI HI HRO SR FO



**YODA BROWN**

EN ISO 20345:2022 CE S3L CI HI HRO SR FO

**73,09€**



\ 1204.02 \

EU 35-48 / UK 2<sup>nd</sup>-13 / MP 217-315

**PROTECTIVE MIDSOLE**  
KEVLAR  
(PT) Kevlar (ES) Kevlar (FR) Kevlar (DE) Kevlar

**PROTECTIVE TOE CAP**  
COMPOSITE  
(PT) Composite (ES) Composite (FR) Composite (DE) Kunststoffkappe

**SOLE**  
DIRECT INJECTED PU + RUBBER  
(PT) PU Diretamente Injetado + Borracha (ES) PU Inyectado + Caucho (FR) PU Injecté Directement + Nitril (DE) Direkt Eingespritztes PU + Gummi

**UPPER RAW MATERIAL**  
NUBUCK LEATHER  
(PT) Pele Nubuck WR (ES) Cuero Nubuck (FR) Cuir Nubuck WR (DE) Nubuck Leder WR

**LINING MATERIAL**  
DRYLEX TEXTILE  
(PT) Têxtil Drylex (ES) Textil Drylex (FR) Textile Drylex (DE) Drylex Textil

**LYNX EARTH**

EN ISO 20345:2022 CE S3L CI HI FO SR

**67,16€**



\ 1257.06 \

EU 35-48 / UK 2<sup>nd</sup>-13 / MP 217-315

**PROTECTIVE MIDSOLE**  
KEVLAR  
(PT) Kevlar (ES) Kevlar (FR) Kevlar (DE) Kevlar

**PROTECTIVE TOE CAP**  
COMPOSITE  
(PT) Composite (ES) Composite (FR) Composite (DE) Kunststoffkappe

**SOLE**  
DOUBLE DENSITY PU W/ 15% COOK  
(PT) Dupla Densidade PU + Cortiça (ES) Doble Densidade PU + Corcho (FR) Doble Densité PU (DE) Zweikomponenten PU

**UPPER RAW MATERIAL**  
RECYCLED TEXTILE (97%)  
(PT) Têxtil Reciclado (ES) Textil Reciclado (FR) Textile Recyclé (DE) Recyceltes Textil

**LINING MATERIAL**  
RECYCLED TEXTILE  
(PT) Têxtil Reciclado (ES) Textil Reciclado (FR) Textile Recyclé (DE) Recyceltes Textil

**79,03€**



\ 1204.02 \

**73,09€**



\ 1204.00 \

**79,03€**



\ 1204.00 \

**LANDO BROWN**

EN ISO 20345:2011 CE S3L HI CI HRO SR FO

**VADER BLACK**

EN ISO 20345:2011 CE S3L HI CI HRO SR FO

**KENOBI BLACK**

EN ISO 20345:2011 CE S3L HI CI HRO SR FO

**SOLE**  
DOUBLE DENSITY PU  
(PT) PU Diretamente Injetado (ES) PU Inyectado (FR) PU Injecté Directement (DE) Direkt Eingespritztes PU

**UPPER RAW MATERIAL**  
VHR TEXTILE  
(PT) Têxtil VHR (ES) Textil (FR) Textile VHR (DE) VHR Textil

**LINING MATERIAL**  
BREATHABLE TEXTILE  
(PT) Têxtil Respirável (ES) Textil Respirable (FR) Textile Respirant (DE) Atmungsaktiv

**67,16€**



\ 1257.10 \

**LYNX ICE**

EN ISO 20345:2011 CE S3 SRC



**LYNX BLACK**

EN ISO 20345:2011 CE S3 SRC

**64,03€**

EU 35-48 / UK 2<sup>1/2</sup>-13 / MP 217-315

**PROTECTIVE MIDSOLE**

KEVLAR

(PT) Kevlar (ES) Kevlar (FR) Kevlar (DE) Kevlar

**PROTECTIVE TOE CAP**

COMPOSITE

(PT) Composite (ES) Composite (FR) Composite (DE) Kunststoffkappe

Kunststoffkappe

**SOLE**

DOUBLE DENSITY PU

(PT) Dupla Densidade PU (ES) Doble Densidade PU (FR)

Double Densité PU (DE) Zweikomponenten PU

**UPPER RAW MATERIAL**

WR BREATHABLE HI-TECH

(PT) Tecnologia MF (ES) Tecnología MF (FR) MF Technologie

(DE) MF Technologie

**LINING MATERIAL**

BREATHABLE TEXTILE

(PT) Têxtil Respirável (ES) Textil Respirable (FR) Textile

Respirant (DE) Atmungsaktiv



\ 1257.50 \

**VAGOS**

EN ISO 20345:2022 CE S2 SR

**43,41€**

EU 34-48 / UK 2-13 / MP 217-315

**PROTECTIVE MIDSOLE**

-

**PROTECTIVE TOE CAP**

COMPOSITE

(PT) Composite (ES) Composite (FR) Composite (DE)

Kunststoffkappe

**SOLE**

DOUBLE DENSITY PU

(PT) Dupla Densidade PU (ES) Doble Densidade PU

(FR) Double Densité PU (DE) Zweikomponenten PU

**UPPER RAW MATERIAL**

VEGAN MICROFIBER

(PT) Microfibrã Vegan (ES) Microfibrã Vegan (FR) Microfibre

Vegan (DE) Mikrofaser Vegan

**LINING MATERIAL**

DRYLEX TEXTILE

(PT) Têxtil Drylex (ES) Textil Drylex (FR) Textile Drylex (DE)

Drylex Textil



\ 1111.23 \

**68,72€**



\ 1057.50 \

**DRAGON BLACK**

EN ISO 20345:2011 CE S3 SRC

**64,03€**



\ 1257.51 \

**LYNX BLUE**

EN ISO 20345:2011 CE S3 SRC

**64,03€**



\ 1257.51 \

**ARA**

EN ISO 20345:2011 CE S1 P SRC

**43,41€**



\ 1111.30 \

**TOCHA 22**

EN ISO 20345:2011 CE S3 SRC



VADER XXL

EN ISO 20345:2011 CE S3 SRA

84,97€



\ 1204.30 \

EU 49-53 / UK 14-17 / MP 322-352

PROTECTIVE MIDSOLE

KEVLAR

(PT) Kevlar (ES) Kevlar (FR) Kevlar (DE) Kevlar

PROTECTIVE TOE CAP

COMPOSITE

(PT) Composite (ES) Composite (FR) Composite (DE)

Kunststoffkappe

SOLE

DOUBLE DENSITY PU

(PT) Dupla Densidade PU (ES) PU Doble Densidade

(FR) Double Densité PU (DE) Zweikomponenten PU

UPPER RAW MATERIAL

FULL GRAIN LEATHER

(PT) Pele de Flor Integral (ES) Cuero Full Grain (FR) Cuir Plein

Fleur Grainé (DE) Glattleder

LINING MATERIAL

DRYLEX TEXTILE

(PT) Têxtil Drylex (ES) Textil Drylex (FR) Textile Drylex (DE)

Drylex Textil

KENOBI XXL

EN ISO 20345:2011 CE S3 SRA

84,97€



\ 1004.30 \

E04

EN ISO 20345: 2022/A1:2024 S3S HI CI HRO FO SR

71,53€



\ 1255.06 \

EU 35-47 / UK 2<sup>1/2</sup>-12 / MP 217-317

PROTECTIVE MIDSOLE

KEVLAR

(PT) Kevlar (ES) Kevlar (FR) Kevlar (DE) Kevlar

PROTECTIVE TOE CAP

FIBERGLASS

(PT) Fibrã de Vidrio (ES) Fibrã de Vidrio (FR) Fibre de Verre

(DE) Glasfaser

SOLE

DIRECT INJECTED PU + RUBBER

(PT) PU Diretamente Injetado + Borracha (ES) PU Inyectado

+ Caucho (FR) PU Injecté Directement + Nitril (DE) Direkt

Eingespritztes PU + Gummi

UPPER RAW MATERIAL

NUBUCK LEATHER + TEXTILE

(PT) Pele Nubuck + Têxtil (ES) Cuero Nobuck + Textil (FR)

Cuir Nubuck + Textile (DE) Nubuckleder + Textil

LINING MATERIAL

DRYLEX TEXTILE

(PT) Têxtil Drylex (ES) Textil Drylex (FR) Textile Drylex (DE)

Drylex Textil

XXL  
49 - 53

77,16€



\ 1055.06 \

E14

EN ISO 20345:2022/A1:2024 S3S HI CI HRO FO SR

71,53€



\ 1255.00 \

E05

EN ISO 20345:2022/A1:2024 S3S HI CI HRO FO SR

77,16€



\ 1055.00 \

E15

EN ISO 20345:2022/A1:2024 S3S HI CI HRO FO SR



**E02**

EN ISO 20345:2011 CE S3 HRO SRC

EU 35-48 / UK 2<sup>1/2</sup>-13 / MP 217-315

**PROTECTIVE MIDSOLE**

KEVLAR

(PT) Kevlar (ES) Kevlar (FR) Kevlar (DE) Kevlar

**PROTECTIVE TOE CAP**

STEEL

(PT) Aço (ES) Acero (FR) Acier (DE) Stahlkappe

**SOLE**

DIRECT INJECTED PU + RUBBER

(PT) PU Diretamente Injetado + Borracha (ES) PU Inyectado

+ Caucho (FR) PU Injecté Directement + Nitril (DE) Direkt

Eingespritztes PU + Gummi

**UPPER RAW MATERIAL**

NUBUCK LEATHER

(PT) Pele Nubuck (ES) Cuero Nubuck (FR) Cuir Nubuck (DE)

Nubuckleder

**LINING MATERIAL**

BREATHABLE TEXTILE

(PT) Têxtil Respirável (ES) Textil Respirable (FR) Textile Respirant

(DE) Atmungsaktiv Textil



**E 10 BLACK**

EN ISO 20345:2011 CE S3 HRO SRC



**E 16 HONEY**

EN ISO 20345:2011 CE S3 HRO SRC



**PROTECTIVE MIDSOLE**

KEVLAR

(PT) Kevlar (ES) Kevlar (FR) Kevlar (DE) Kevlar

**PROTECTIVE TOE CAP**

STEEL

(PT) Aço (ES) Acero (FR) Acier (DE) Stahlkappe

**SOLE**

DIRECT INJECTED PU + RUBBER

(PT) PU Diretamente Injetado + Borracha (ES) PU Inyectado

+ Caucho (FR) PU Injecté Directement + Nitril (DE) Direkt

Eingespritztes PU + Gummi

**UPPER RAW MATERIAL**

NUBUCK LEATHER

(PT) Pele Nubuck (ES) Cuero Nubuck (FR) Cuir Nubuck (DE)

Nubuckleder

**LINING MATERIAL**

BREATHABLE TEXTILE

(PT) Têxtil Respirável (ES) Textil Respirable (FR) Textile Respirant

(DE) Atmungsaktiv Textil



**E 17 BROWN**

EN ISO 20345:2011 CE S3 HRO SRC

EU 39-48 / UK 6-13 / MP 257-315



**E 22**

EN ISO 20345:2011 CE S3 HRO SRC



**HYBRID BLUE**

EN ISO 20345:2011 CE S3 SRC

55,91€



\ 1263.11 \

EU 35-48 / UK 2 1/2-13 / MP 217-315

**PROTECTIVE MIDSOLE**  
KEVLAR  
(PT) Kevlar (ES) Kevlar (FR) Kevlar (DE) Kevlar

**PROTECTIVE TOE CAP**  
COMPOSITE  
(PT) Composite (ES) Composite (FR) Composite (DE) Kunststoffkappe

**SOLE**  
DIRECT INJECTED PU + TPU  
(PT) PU Diretamente Injetado + TPU (ES) PU Inyectado + TPU (FR) PU Injecté Directement + TPU (DE) Direkt Eingespritztes PU + TPU

**UPPER RAW MATERIAL**  
LASER HD WR TEXTILE  
(PT) Têxtil Laser HD WR (ES) Textil Laser HD WR (FR) Textile Laser HD WR (DE) WR Floater Cognac

**LINING MATERIAL**  
BREATHABLE TEXTILE  
(PT) Têxtil Respirável (ES) Textil Respirable (FR) Textile Respirant (DE) Atmungsaktiv Textil

**SOLAR**

EN ISO 20345:2011 CE S1 P SRC

46,84€



\ 1250.01 \

EU 36-48 / UK 3-13 / MP 225-315

**PROTECTIVE MIDSOLE**  
KEVLAR  
(PT) Kevlar (ES) Kevlar (FR) Kevlar (DE) Kevlar

**PROTECTIVE TOE CAP**  
COMPOSITE  
(PT) Composite (ES) Composite (FR) Composite (DE) Kunststoffkappe

**SOLE**  
DIRECT INJECTED PU + TPU  
(PT) PU Diretamente Injetado + TPU (ES) PU Inyectado Directo + TPU (FR) PU Injecté Directement + TPU (DE) Direkt Eingespritztes PU + TPU

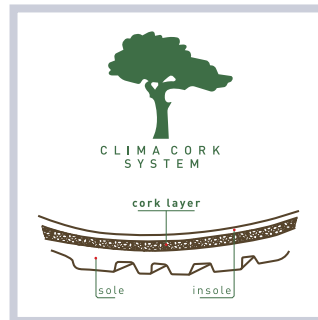
**UPPER RAW MATERIAL**  
SUEDE LEATHER  
(PT) Couro Acamurçado (ES) Cuero de Gamuza (FR) Croute Velours (DE) Suede Leder

**LINING MATERIAL**  
BREATHABLE TEXTILE  
(PT) Têxtil Respirável (ES) Textil Respirable (FR) Textile Respirant (DE) Atmungsaktiv Textil

55,91€



\ 1263.14 \



**HYBRID RED**

EN ISO 20345:2011 CE S3 SRC

46,84€



\ 1250.00 \

**TIDAL**

EN ISO 20345:2011 CE S1 P SRC

48,72€



\ 1050.00 \

**BIOMASS**

EN ISO 20345:2011 CE S3 SRC

**UPPER RAW MATERIAL**  
LEATHER + TEXTILE  
(PT) Pele + Têxtil (ES) Piel + Textil (FR) Cuir + Textile (DE) Leder + Textil



**JAMOR**

EN ISO 20345:2022 CE S3L HI CI FO SR

73,09€



\ 1237.00 \

EU 36-47 / UK 3-12 / MP 225-307

- PROTECTIVE MIDSOLE**  
KEVLAR  
(PT) Kevlar (ES) Kevlar (FR) Kevlar (DE) Kevlar
- PROTECTIVE TOE CAP**  
STEEL  
(PT) Aço (ES) Acero (FR) Acier (DE) Stahlkappe
- SOLE**  
DOUBLE DENSITY PU  
(PT) Dupla Densidade PU (ES) Doble Densidade PU (FR) Double Densité PU (DE) Zweikomponenten PU
- UPPER RAW MATERIAL**  
MATRIX KEVLAR + ANILINE LEATHER  
(PT) Matrix Kevlar + Pele Anilina (ES) Matrix Kevlar + Cuero Anilina (FR) Matrix Kevlar + Aniline Leder (DE) Matrix Kevlar + Aniline Leder
- LINING MATERIAL**  
BREATHABLE TEXTILE  
(PT) Têxtil Respirável (ES) Textil Respirable (FR) Textile Respirant (DE) Atmungsaktiv Textil

**EXPLORATION HIGH**

EN ISO 20345:2022/A1:2024 CE S7 HI CI FO SR

87,47€



\ 1611.00 \

EU 39-48 / UK 6-13 / MP 247-315

- PROTECTIVE MIDSOLE**  
STEEL  
(PT) Aço (ES) Acero (FR) Acier (DE) Stahlkappe
- PROTECTIVE TOE CAP**  
STEEL  
(PT) Aço (ES) Acero (FR) Acier (DE) Stahlkappe
- SOLE**  
DIRECT INJECTED PU  
(PT) PU Diretamente Injetado (ES) PU Inyectado Directo (FR) PU Injecté Directement (DE) Direkt Eingespritztes PU
- UPPER RAW MATERIAL**  
FULL GRAIN LEATHER  
(PT) Pele de Flor Integral (ES) Cuero Full Grain (FR) Cuir Plein Fleur Grainé (DE) Glattleder
- LINING MATERIAL**  
AQUATEX WATERPROOF MEMBRANE  
(PT) Membrana Impermeável Aquatex (ES) Membrana Impermeable Aquatex (FR) Membrane Impermeable Aquatex (DE) Aquatex Wasserdichte Membrane

**EXPLORATION LOW**

EN ISO 20345:2022/A1:2024 CE S7 HI CI FO SR

77,78€



\ 1011.00 \

73,09€



\ 1238.02 \

Designed for multidirectional floors, giving a perfect traction with comfort to your feet



TECHNICAL CONTRIBUTION OF **SPODOS**<sup>®</sup>  
FOOT SCIENCE CENTER

**TEAM BROWN**

EN ISO 20345:2022 CE S3L CI HI FO SR



**ELITE**

EN ISO 17249:2013 **CLASS 2**  
EN ISO 20345:2011 **CE S3 CI HI HRO SRC**

**213,09€**



\ 1671.02 \

EU 39-48 / UK 6-13 / MP 247-315

**PROTECTIVE MIDSOLE**

STEEL  
(PT) Aço (ES) Acero (FR) Acier (DE) Stahlkappe

**PROTECTIVE TOE CAP**

STEEL  
(PT) Aço (ES) Acero (FR) Acier (DE) Stahlkappe

**SOLE**

DIRECT INJECTED PU + RUBBER  
(PT) PU Diretamente Injetado + Borracha (ES) PU Inyectado + Caucho (FR) PU Injecté Directement + Nitril (DE) Direkt Eingespritztes PU + Gummi

**UPPER RAW MATERIAL**

CRAZY HORSE LEATHER  
(PT) Pele Crazy Horse (ES) Cuero Crazy Horse (FR) Cuir Crazy Horse (DE) Crazy Horse Leder

**LINING MATERIAL**

SYMPATEX WATERPROOF MEMBRANE  
(PT) Membrana Impermeável Sympatex (ES) Membrana Impermeable Sympatex (FR) Membrane Impermeable Sympatex (DE) Sympatex Wasserdichte Membrane

**DAINTREE 2.1**

EN ISO 17249:2013 / AC:2014 **CLASS 1**  
EN ISO 20345:2011 **CE S3 HRO SRC**

**154,34€**



\ 1053.90 \

EU 39-48 / UK 6-13 / MP 247-315

**SHERWOOD**

EN ISO 17249:2013 **CLASS 3**  
EN ISO 20345:2011 **CE S3 HRO SRA**

EU 39-47 / UK 6-12 / MP 247-317

**PROTECTIVE MIDSOLE**

STEEL  
(PT) Aço (ES) Acero (FR) Acier (DE) Stahlkappe

**PROTECTIVE TOE CAP**

STEEL  
(PT) Aço (ES) Acero (FR) Acier (DE) Stahlkappe

**SOLE**

DIRECT INJECTED PU + RUBBER  
(PT) PU Diretamente Injetado + Borracha (ES) PU Inyectado + Caucho (FR) PU Injecté Directement + Nitril (DE) Direkt Eingespritztes PU + Gummi

**UPPER RAW MATERIAL**

CRAZY HORSE LEATHER  
(PT) Pele Crazy Horse (ES) Cuero Crazy Horse (FR) Cuir Crazy Horse (DE) Crazy Horse Leder

**LINING MATERIAL**

SYMPATEX WATERPROOF MEMBRANE  
(PT) Membrana Impermeável Sympatex (ES) Membrana Impermeable Sympatex (FR) Membrane Impermeable Sympatex (DE) Sympatex Wasserdichte Membrane

**204,66€**



\ 1053.60 \

EU 39-47 / UK 6-12 / MP 247-317

**PROTECTIVE MIDSOLE**

STEEL  
(PT) Aço (ES) Acero (FR) Acier (DE) Stahlkappe

**PROTECTIVE TOE CAP**

STEEL  
(PT) Aço (ES) Acero (FR) Acier (DE) Stahlkappe

**SOLE**

DIRECT INJECTED PU + RUBBER  
(PT) PU Diretamente Injetado + Borracha (ES) PU Inyectado + Caucho (FR) PU Injecté Directement + Nitril (DE) Direkt Eingespritztes PU + Gummi

**UPPER RAW MATERIAL**

FULL GRAIN LEATHER  
(PT) Pele de Flor Integral (ES) Cuero Full Grain (FR) Cuir Plein Fleur Grainé (DE) Glattleder

**UPPER RAW MATERIAL**

NUBUCK LEATHER  
(PT) Pele Nubuck (ES) Cuero Nubuck (FR) Cuir Nubuck (DE) Nubuck Leder

**LINING MATERIAL**

BREATHABLE TEXTILE  
(PT) Têxtil Respirável (ES) Textil Respirable (FR) Textile Respirant (DE) Atmungsaktiv Textil

**DAINTREE 2.0**

EN ISO 17249:2013 / AC:2014 **CLASS 1**  
EN ISO 20345:2022 **CE S3 CI HI HRO SRC**

**158,72€**



\ 1053.80 \



**ICELANDICC**

EN ISO 20345:2022 CE S3 CI FO LG SR

EU 36-50 / UK 3-14<sup>1/2</sup> / MP 225-330

**139,34€**



\ 1625.00 \

**PROTECTIVE MIDSOLE**

**STEEL**

(PT) Aço (ES) Acero (FR) Acier (DE) Stahlkappe

**PROTECTIVE TOE CAP**

**COMPOSITE**

(PT) Composite (ES) Composite (FR) Composite (DE) Kunststoffkappe

Kunststoffkappe

**SOLE**

**DOUBLE DENSITY PU**

(PT) Dupla Densidade PU (ES) Doble Densidade PU

(FR) Double Densité PU (DE) Zweikomponenten PU

**UPPER RAW MATERIAL**

**FULL GRAIN LEATHER**

(PT) Pele de Flor Integral (ES) Cuero Full Grain (FR) Cuir Plein

Fleur Grainé (DE) Glattleder

**LINING MATERIAL**

**NATURAL LAMBSKIN**

(PT) Pele Natural de Carneiro (ES) Piel de Cordero Natural

(FR) Peau de Mouton Naturelle (DE) Natürliches Lamm

Futter



WATER REPELLENT UPPER



ANTI-SLIP SOLE

EU 39-48 / UK 6-13 / MP 257-325

**NEW BARCELONA**

EN ISO 20345:2022 CE S3L CI HI HRO SC SR

**55,91€**



\ 1052.01 \



RESISTANT UP TO 300°C

**PROTECTIVE MIDSOLE**

-

**PROTECTIVE TOE CAP**

**STEEL**

(PT) Aço (ES) Acero (FR) Acier (DE) Stahlkappe

**SOLE**

**DIRECT INJECTED PU + RUBBER**

(PT) PU Diretamente Injetado + Borracha (ES) PU Inyectado

+ Caucho (FR) PU Injecté Directement + Nitril (DE) Direkt

Eingespritztes PU + Gummi

**UPPER RAW MATERIAL**

**FULL GRAIN LEATHER**

(PT) Pele de Flor Integral (ES) Cuero Full Grain (FR) Cuir Plein

Fleur Grainé (DE) Glattleder

**LINING MATERIAL**

**BREATHABLE TEXTILE**

(PT) Têxtil Respirável (ES) Textil Respirable (FR) Textile

Respirant (DE) Atmungsaktiv Textil

**X6**

EN ISO 20345:2022/A1:2022 CE S3 CI HI FO SR

**63,72€**



\ 1065.52 \

EU 36-47 / UK 3-12 / MP 225-307

**PROTECTIVE MIDSOLE**

**STEEL**

(PT) Aço (ES) Acero (FR) Acier (DE) Stahlkappe

**PROTECTIVE TOE CAP**

**STEEL**

(PT) Aço (ES) Acero (FR) Acier (DE) Stahlkappe

**SOLE**

**DOUBLE DENSITY PU**

(PT) Dupla Densidade PU (ES) Doble Densidade PU

(FR) Double Densité PU (DE) Zweikomponenten PU

**UPPER RAW MATERIAL**

**NUBUCK LEATHER**

(PT) Pele Nubuck (ES) Cuero Nubuck (FR) Cuir Nubuck

(DE) Nubuck Leder

**LINING MATERIAL**

**BREATHABLE TEXTILE**

(PT) Têxtil Respirável (ES) Textil Respirable (FR) Textile

Respirant (DE) Atmungsaktiv Textil



2 SIDE ZIPS



NATURAL LAMBSKIN



CLIMA CORK SYSTEM



SHOCK ABSORBER



WATER REPELLENT UPPER



RESISTANT UP TO -30°C



WATER REPELLENT UPPER



ANTI-SLIP SOLE



CLIMA CORK SYSTEM

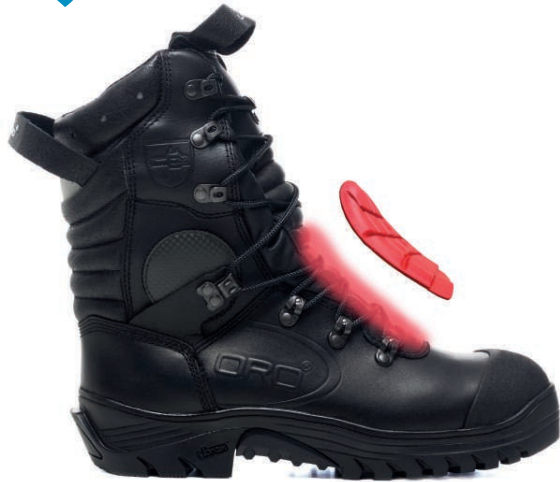


ANTISTATIC

**FÉNIX 5.1 PRO**

EN ISO 15090:2012 TIPO 2 H13 F2A  
 EN ISO 17249:2022 / AC 2014 CLASS 2  
 EN ISO 20345:2011 CE S3 WR CI HI AN M HRO SRC

**214,34€**



\ 2018.30 \

EU 36-47 / UK 3-12 / MP 225-307

**PROTECTIVE MIDSOLE**

KEVLAR  
 (PT) Kevlar (ES) Kevlar (FR) Kevlar (DE) Kevlar

**PROTECTIVE TOE CAP**

FIBERGLASS  
 (PT) Fibra de Vidro (ES) Fibra de Vidrio (FR) Fibre de Verre (DE) Glasfaser

**SOLE**

FIREFOX - VIBRAM FIRE-REARADANT RUBBER  
 (PT) Borracha Ignifuga - Vibram (ES) Caucho Ignifugo - Vibram (FR) Nitril Ignifuge - Vibram (DE) Feuerhemmender Gummi - Vibram

**UPPER RAW MATERIAL**

FULL GRAIN LEATHER  
 (PT) Pele de Flor Integral (ES) Cuero Full Grain (FR) Cuir Plein Fleur Grainé (DE) Glattleder

**LINING MATERIAL**

SYMPATEX WATERPROOF MEMBRANE  
 (PT) Membrana Impermeável Sympatex (ES) Membrana Impermeable Sympatex (FR) Membrane Impermeable Sympatex (DE) Sympatex Wasserdichte Membrane



ANKLE PROTECTION



METATARSAL PROTECTION



**FÉNIX 5.1**

EN ISO 15090:2012 TIPO 2 H13 F2A  
 EN ISO 20345:2022 CE S3 WR CI HI AN HRO SRC

**181,84€**



\ 2018.40 \

EU 36-47 / UK 3-12 / MP 225-307



ANKLE PROTECTION



**FLAME 5.1**

EN ISO 15090:2012 TIPO 2 H13 F2A  
 EN ISO 20345:2022 CE S3 WR CI HI AN HRO SRC



METAL FREE

EU 36-47 / UK 3-12 / MP 225-307

**PROTECTIVE MIDSOLE**

KEVLAR  
 (PT) Kevlar (ES) Kevlar (FR) Kevlar (DE) Kevlar

**PROTECTIVE TOE CAP**

FIBERGLASS  
 (PT) Fibra de Vidro (ES) Fibra de Vidrio (FR) Fibre de Verre (DE) Glasfaser

**SOLE**

FIREFOX - VIBRAM FIRE-REARADANT RUBBER  
 (PT) Borracha Ignifuga - Vibram (ES) Caucho Ignifugo - Vibram (FR) Nitril Ignifuge - Vibram (DE) Feuerhemmender Gummi - Vibram

**UPPER RAW MATERIAL**

FULL GRAIN LEATHER  
 (PT) Pele de Flor Integral (ES) Cuero Full Grain (FR) Cuir Plein Fleur Grainé (DE) Glattleder

**LINING MATERIAL**

SYMPATEX WATERPROOF MEMBRANE  
 (PT) Membrana Impermeável Sympatex (ES) Membrana Impermeable Sympatex (FR) Membrane Impermeable Sympatex (DE) Sympatex Wasserdichte Membrane

**162,47€**



\ 2019.00 \





EU 36-47 / UK 3-12 / MP 225-307

**PROTECTIVE MIDSOLE**  
KEVLAR  
(PT) Kevlar (ES) Kevlar (FR) Kevlar (DE) Kevlar

**PROTECTIVE TOE CAP**  
FIBERGLASS  
(PT) Fibra de Vidro (ES) Fibra de Vidrio (FR) Fibre de Verre (DE) Glassfaser

**SOLE**  
FIREFOX - VIBRAM FIRE-RETTARDANT RUBBER  
(PT) Borracha Ignifuga - Vibram (ES) Caucho Ignifugo - Vibram (FR) Nitril Ignifuge - Vibram (DE) Feuerhemmender Gummi - Vibram

**UPPER RAW MATERIAL**  
FULL GRAIN LEATHER + TEXTILE  
(PT) Pele de Flor Integral + Têxtil (ES) Cuero Full Grain + Textil (FR) Cuir Plein Fleur Grainé + Textile (DE) Glattleder + Textil

**LINING MATERIAL**  
SYMPATEX WATERPROOF MEMBRANE  
(PT) Membrana Impermeável Sympatex (ES) Membrana Impermeable Sympatex (FR) Membrana Impermeable Sympatex (DE) Sympatex Wasserdichte Membrane

## PATROL 5.1

EN ISO 15090:2012 TIPO 2 H13 F2A  
EN ISO 20345:2022 CE S3 HI CI AN HRO SRC

149,34€



\ 2076.50 \



METAL FREE

77,78€



\ 1076.85 \

## PATROL 2.1

EN ISO 20345:2011 CE 03 HRO SRC WRU



INTERNAL ZIPPER



EU 35-47 / UK 2<sup>1/2</sup>-12 / MP 217-307

**PROTECTIVE MIDSOLE**  
KEVLAR  
(PT) Kevlar (ES) Kevlar (FR) Kevlar (DE) Kevlar

**PROTECTIVE TOE CAP**  
-

**SOLE**  
DIRECT INJECTED PU + RUBBER  
(PT) PU Diretamente Injetado + Borracha (ES) PU Inyectado + Caucho (FR) PU Injecté Directement + Nitril (DE) Direkt Eingespritztes PU + Gummi

**UPPER RAW MATERIAL**  
FULL GRAIN LEATHER + TEXTILE  
(PT) Pele de Flor Integral + Têxtil (ES) Cuero Full Grain + Textil (FR) Cuir Plein Fleur Grainé + Textile (DE) Glattleder + Textil

**LINING MATERIAL**  
BREATHABLE TEXTILE  
(PT) Têxtil Respirável (ES) Textil Respirable (FR) Textile Respirant (DE) Atmungsaktiv Textil

## SPACE TROOPER

EN ISO 20347:2022 CE O2 PS SR WR AN

110,28€



\ 1610.00 \



EU 36-47 / UK 3-12 / MP 225-307

**PROTECTIVE MIDSOLE**  
KEVLAR  
(PT) Kevlar (ES) Kevlar (FR) Kevlar (DE) Kevlar

**PROTECTIVE TOE CAP**  
-

**SOLE**  
TPU + EVA PHYLON  
(PT) TPU + Eva Phylon (ES) TPU + Eva Phylon (FR) TPU + Eva Phylon (DE) TPU + Eva Phylon

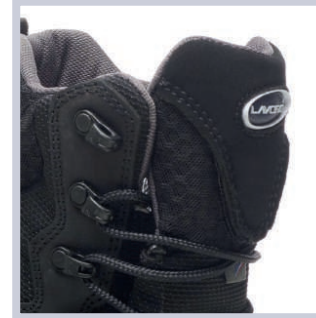
**UPPER RAW MATERIAL**  
HI-TECH TEXTILE  
(PT) Têxtil Hi-Tech (ES) Textil Hi-Tech (FR) Textile Hi-Tech (DE) High-Tech Textil

**LINING MATERIAL**  
SYMPATEX WATERPROOF MEMBRANE  
(PT) Membrana Impermeável Sympatex (ES) Membrana Impermeable Sympatex (FR) Membrane Impermeable Sympatex (DE) Sympatex Wasserdichte Membrane

## S.A.S. BLACK BOOT

EN ISO 20347:2022 CE 07 S HRO SR

sob consulta



LACICE - SHOE LACES STORAGE SYSTEM



**SOLE**  
DIRECT INJECTED PU + VIBRAM  
(PT) PU Diretamente Injetado + Vibram (ES) PU Inyectado + Vibram (FR) PU Injecté Directement + Vibram (DE) Direkt Eingespritztes PU + Vibram



\ 1675.10 \



RESISTANT UP TO 300°C



ANTISTATIC



WATER REPELLENT UPPER



SHOCK ABSORBER



ANTI-SLIP SOLE



sympatex



METAL FREE

**LYNX CLAY**

EN ISO 20345:2022 CE S3L CI HI FO SR

67,16€



\ 1257.82 \

EU 35-42 / UK 2<sup>1/2</sup>-8 / MP 217-370

**PROTECTIVE MIDSOLE**

KEVLAR

(PT) Kevlar (ES) Kevlar (FR) Kevlar (DE) Kevlar

**PROTECTIVE TOE CAP**

COMPOSITE

(PT) Composite (ES) Composite (FR) Composite (DE) Kunststoffkappe

**SOLE**

DOUBLE DENSITY PU

(PT) Dupla Densidade PU (ES) Doble Densidade PU (FR) Doble Densité PU (DE) Zweikomponenten PU

**UPPER RAW MATERIAL**

BREATHABLE TEXTILE

(PT) Têxtil Respirável (ES) Textil Respirable (FR) Textile Respirant (DE) Atmungsaktiv Textil

**LINING MATERIAL**

BREATHABLE TEXTILE

(PT) Têxtil Respirável (ES) Textil Respirable (FR) Textile Respirant (DE) Atmungsaktiv Textil

**LYNX TERRACOTA**

EN ISO 20345:2022 CE S3L CI HI FO SR

67,16€



\ 1257.84 \

**BIANCA**

EN ISO 20345:2011 CE S3S CI FO SR

71,22€



\ 1118.10 \

EU 36-42 / UK 3-8 / MP 225-270

**PROTECTIVE MIDSOLE**

KEVLAR

(PT) Kevlar (ES) Kevlar (FR) Kevlar (DE) Kevlar

**PROTECTIVE TOE CAP**

STEEL

(PT) Aço (ES) Acero (FR) Acier (DE) Stahlkappe

**SOLE**

DIRECT INJECTED PU

(PT) PU Diretamente Injetado (ES) PU Inyectado Directo (FR) PU Injecté Directement (DE) Direkt Eingespritztes PU

**UPPER RAW MATERIAL**

FULL GRAIN LEATHER

(PT) Pele de Flor Integral (ES) Cuero Full Grain (FR) Cuir Plein Fleur Grainé (DE) Glattleder

**LINING MATERIAL**

ANILINE LEATHER

(PT) Pele Anilina (ES) Cuero Anilina (FR) Cuir Aniline (DE) Aniline Leder

71,22€



\ 1153.10 \

**EVA**

EN ISO 20345:2011 CE S2P SRC



LUCY

EN ISO 20345:2011 CE S3S CI FO SR

**76,53€**



EU 36-42 / UK 3-8 / MP 225-270

**PROTECTIVE MIDSOLE**  
KEVLAR  
(PT) Kevlar (ES) Kevlar (FR) Kevlar (DE) Kevlar

**PROTECTIVE TOE CAP**  
STEEL  
(PT) Aço (ES) Acero (FR) Acier (DE) Stahlkappe

**SOLE**  
DIRECT INJECTED PU  
(PT) PU Diretamente Injetado (ES) PU Inyectado Directo (FR) PU Injecté Directement (DE) Direkt Eingespritztes PU

**UPPER RAW MATERIAL**  
FULL GRAIN LEATHER  
(PT) Pele de Flor Integral (ES) Cuero Full Grain (FR) Cuir Plein Fleur Grainé (DE) Glattleder

**LINING MATERIAL**  
ANILINE LEATHER  
(PT) Pele Anilina (ES) Cuero Anilina (FR) Cuir Aniline (DE) Aniline Leder

\ 1021.10 \

**76,53€**



\ 1016.10 \

**76,53€**



\ 1036.30 \

**CYNDI**  
EN ISO 20345:2011 CE S3S CI FO SR

**SANDY**  
EN ISO 20345:2011 CE S2P SRC

ACCESSORIES

SPODOS 3V SIZE 36-47



**FLAT FEET**



\ 9999.95 \ **12,78€**



**NORMAL FEET**



\ 9999.96 \ **12,78€**



**ARCH FEET**



\ 9999.97 \ **12,78€**

**FEATURES**

<p><b>HEALTH OF YOUR FEET</b></p> <ul style="list-style-type: none"> <li>Anti-Microbial</li> <li>Active Carbon</li> <li>Thermoregulatory Effect</li> <li>Steam Permeable</li> <li>100% Breathable</li> <li>Washable</li> </ul>	<p><b>THINKING ABOUT COMFORT</b></p> <ul style="list-style-type: none"> <li>Anti-Fatigue</li> <li>Extra Light</li> <li>High Absorption Capacity</li> <li>High Memory Capacity</li> <li>Different Densities</li> </ul>	<p><b>ECOFRIENDLY</b></p> <ul style="list-style-type: none"> <li>Made from Recycled Materials</li> </ul> <p><b>ECOFRIENDLY</b></p> <ul style="list-style-type: none"> <li>Made from Recycled Materials</li> </ul>
--	---	---

SIZE 35-38 / 43-47 **7,78€**

**PRO SOCKS**

\ 9999.79 \



SIZE 39-42 / 43-47 **3,41€**

**ECO SOCKS**

\ 9999.73 \



SIZE 36-47 **7,78€**



\ 9999.12 \

**CHROMIUM FREE LEATHER**

Cork and Natural Leather  
Breathable  
Thermoregulatory Effect

**sob consulta**



\ 9999 \

**LAVORO X-MAX**

Selected premium materials and accurate design to keep your feet feeling cool, dry and fresher for longer.

