



New England School Development Council

**Kingdom East School District
Lyndonville, VT
Consolidated Report**

School Year 2025-26 Enrollment Projection Report

Copyright, New England School Development Council, 2025



Table of Contents

Section	Page
Enrollment Summary.....	1
Historical Enrollment Table.....	2
Historical Enrollment Graph.....	3
Historical Enrollment by Town.....	4
Projected Enrollment Table.....	5
Projected Enrollment Graph.....	6
Projected Enrollment by Town.....	7
Historical & Projected Enrollment Graph.....	8
Historical & Projected Enrollment in Grade Combinations Line Graph.....	9
Historical & Projected Enrollment in Grade Combinations Stacked Column Graph.....	10
Birth to Kindergarten Graph.....	11
Additional Information	12
New England PK-12 Enrollment Trends.....	13
Projection Methodology and Reliability	14



Kingdom East SD Enrollment Summary

NESDEC is pleased to send you this report displaying the past, present, and projected enrollments for your District. It is important to update enrollment projections every year to identify changes in enrollment patterns. Ten-year projections are designed to provide your District with yearly, up-to-date enrollment information that can be used by boards and administrators for effective planning and allocation of resources. We received the enrollment data from the District, and we assume that the method of collecting this data has been consistent from year to year.

Birth data informs Kindergarten enrollment. Each year, NESDEC secures birth data from State sources, providing a snapshot in time as to actual and provisional births as reported by the State, and then uses this birth data to predict Kindergarten enrollments. We only use annual birth data to assure consistency in reporting from year to year. Estimated births, which are an average of the previous five years of birth data, are based on this same snapshot. NESDEC acknowledges the variability of the provisional and the estimated birth data, and notes that the projected Kindergarten enrollments may serve as a guide to future planning.

Enrollment projections are more reliable in Years #1-3 in the future. Projections four to ten years out may serve as a guide to future enrollments and are useful for planning purposes. For more information, please refer to the Projection Methodology and Reliability section of this document.

The NESDEC enrollment projection fell within 48 students of the K-8 total, 1,058 students projected vs. 1,010 enrolled.

Births decreased by 16 from a previous ten-year average of 118 to a projected average of 102.

Over the next three years, Grades K-5 enrollments are projected to decrease by 75 students, and Grades 6-8 enrollments are projected to decrease by 36 students, as students move through the grades.



Historical Enrollment

School District: Kingdom East School District, VT - Consolidated

10/19/2025

Historical Enrollment By Grade																			
Birth Year	Births*	School Year	PK	K	1	2	3	4	5	6	7	8						K-8	PK-8
2013	121	2018-19	157	124	128	143	102	124	126	135	130	133						1145	1302
2014	128	2019-20	167	117	122	132	136	105	122	129	144	134						1141	1308
2015	116	2020-21	46	112	103	107	129	133	104	123	126	130						1067	1113
2016	129	2021-22	137	121	127	124	115	141	141	114	130	139						1152	1289
2017	124	2022-23	153	108	133	122	129	122	141	140	115	129						1139	1292
2018	109	2023-24	55	98	109	129	123	124	120	136	134	113						1086	1141
2019	113	2024-25	45	107	95	113	130	123	121	116	135	139						1079	1124
2020	122	2025-26	35	103	106	91	110	124	114	123	111	128						1010	1045

*Birth data provided by Public Health Vital Records Departments in each state.

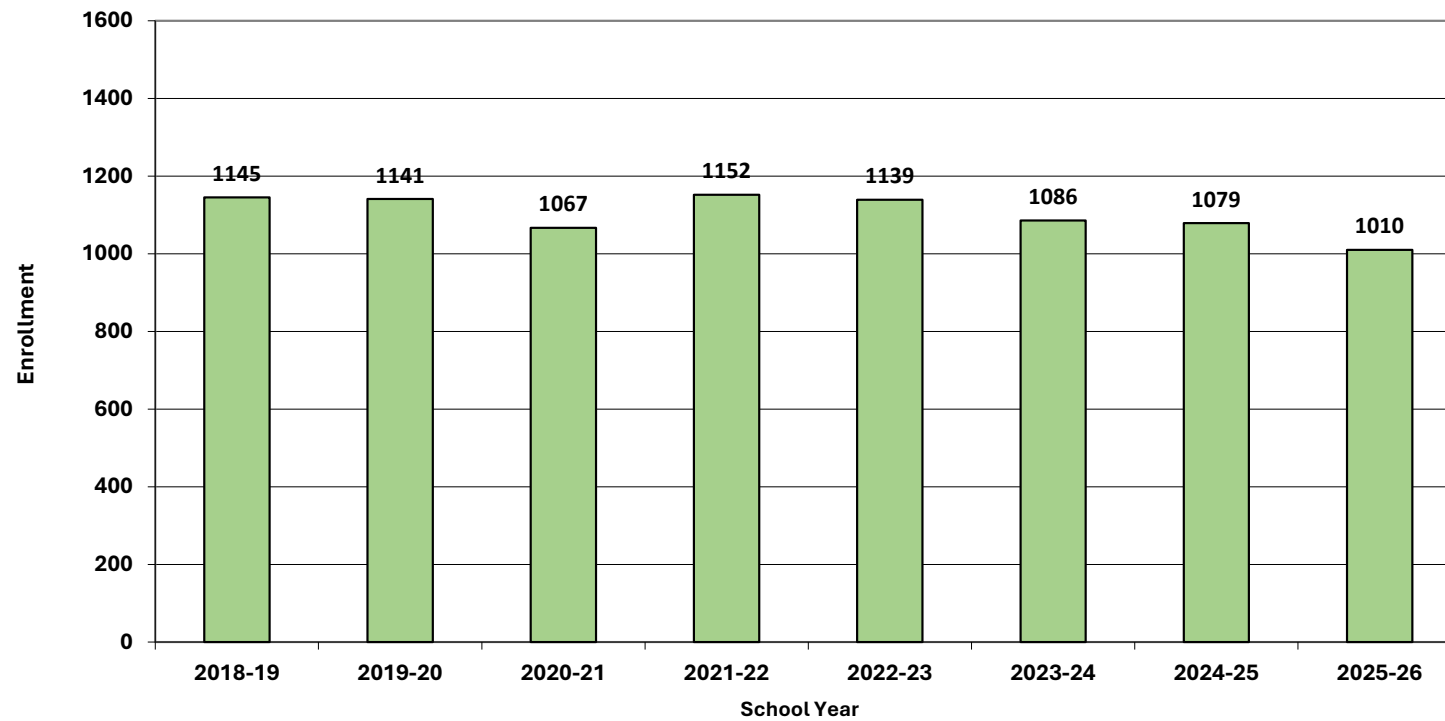
** < 10 Not reported, to protect subgroups with fewer than 10 students.

Historical Enrollment in Grade Combinations										
School Year	PK-5	K-5	K-2	3-5	6-8	K-8	PK-8	7-8		
2018-19	904	747	395	352	398	1145	1302	263		
2019-20	901	734	371	363	407	1141	1308	278		
2020-21	734	688	322	366	379	1067	1113	256		
2021-22	906	769	372	397	383	1152	1289	269		
2022-23	908	755	363	392	384	1139	1292	244		
2023-24	758	703	336	367	383	1086	1141	247		
2024-25	734	689	315	374	390	1079	1124	274		
2025-26	683	648	300	348	362	1010	1045	239		

Historical Percentage Changes			
School Year	K-8	Diff.	%
2018-19	1145		
2019-20	1141	-4	-0.3%
2020-21	1067	-74	-6.5%
2021-22	1152	85	8.0%
2022-23	1139	-13	-1.1%
2023-24	1086	-53	-4.7%
2024-25	1079	-7	-0.6%
2025-26	1010	-69	-6.4%
Change		-135	-11.8%

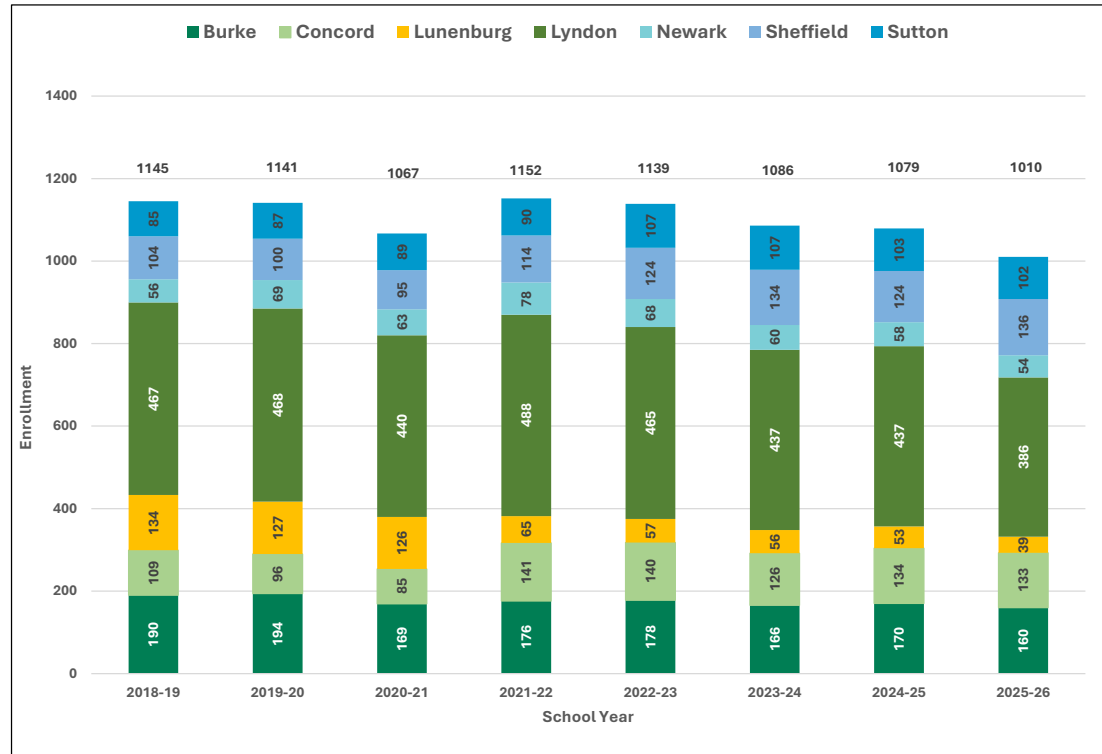


Grades K-8 Historical Enrollment





Grades K-8 Historical Enrollment by Town



Town	2018-19	2019-20	2020-21	2021-22	2022-23	2023-24	2024-25	2025-26
Burke	17%	17%	16%	15%	16%	15%	16%	16%
Concord	10%	8%	8%	12%	12%	12%	12%	13%
Lunenburg	12%	11%	12%	6%	5%	5%	5%	4%
Lyndon	41%	41%	41%	42%	41%	40%	41%	38%
Newark	5%	6%	6%	7%	6%	6%	5%	5%
Sheffield	9%	9%	9%	10%	11%	12%	11%	13%
Sutton	7%	8%	8%	8%	9%	10%	10%	10%

* percentages rounded



Projected Enrollment

School District: Kingdom East School District, VT - Consolidated

10/19/2025

Enrollment Projections By Grade*																			
Birth Year	Births*		School Year	PK	K	1	2	3	4	5	6	7	8						
2020	122		2025-26	35	103	106	91	110	124	114	123	111	128					1010	1045
2021	104		2026-27	35	98	104	106	91	110	119	109	118	111					966	1001
2022	95		2027-28	35	89	100	102	107	89	108	115	105	119					934	969
2023	93		2028-29	35	89	91	99	104	105	85	109	110	107					899	934
2024	105	(est.)	2029-30	35	98	91	92	100	102	102	79	106	112					882	917
2025	104	(est.)	2030-31	38	98	99	91	92	100	102	76	106						864	902
2026	100	(est.)	2031-32	38	94	100	98	92	91	99	98	98	78					848	886
2027	100	(est.)	2032-33	38	93	96	101	98	89	89	98	94	98					856	894
2028	100	(est.)	2033-34	38	94	94	97	101	97	88	87	95	98					851	889
2029	102	(est.)	2034-35	40	96	96	95	97	100	95	90	84	95					848	888
2030	101	(est.)	2035-36	40	95	98	96	95	96	98	93	87	86					844	884

Note: Ungraded students (UNGR) often are high school students whose anticipated years of graduation are unknown, or students with special needs - UNGR not included in Grade Combinations for 7-12, 9-12, etc.

*Birth data provided by Public Health Vital Records Departments in each state.

Based on an estimate of births

Based on children already born

Based on students already enrolled

** < 10 Not reported, to protect subgroups with fewer than 10 students.

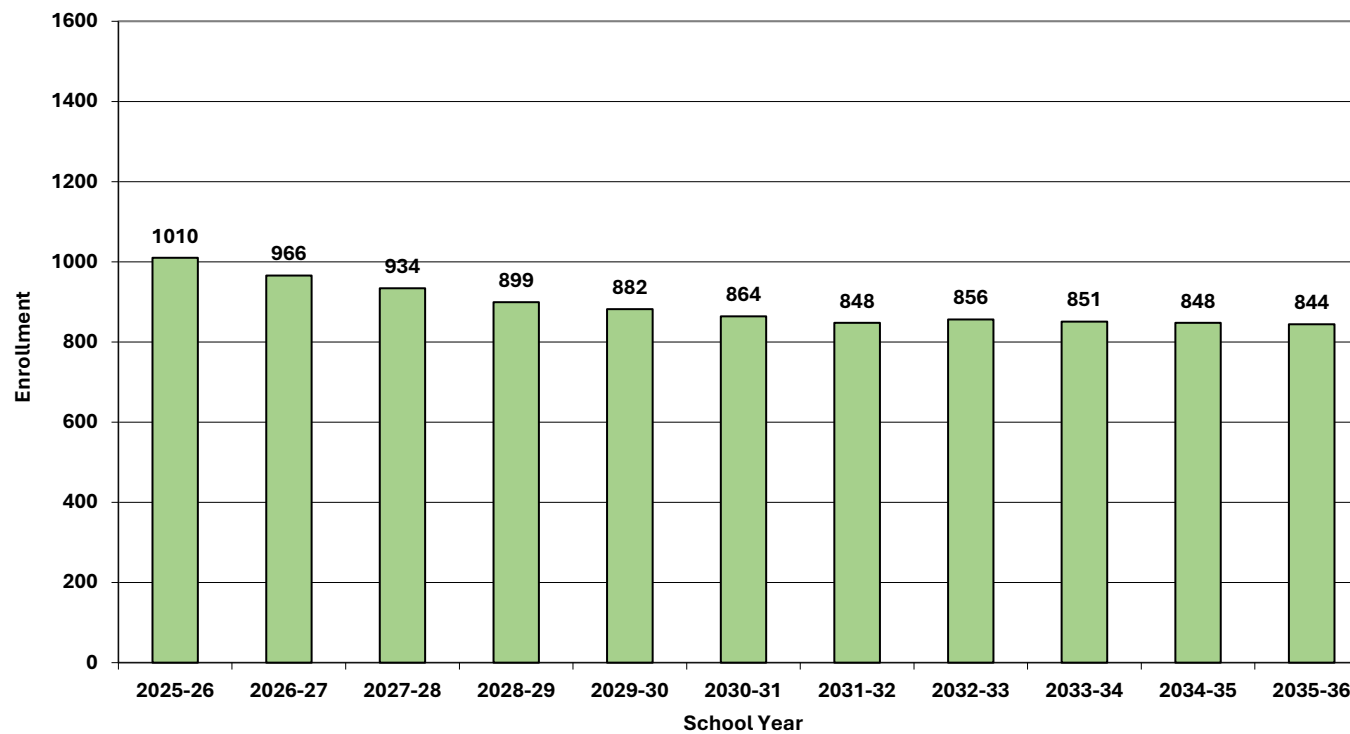
Projected Enrollment in Grade Combinations*									
School Year	PK-5	K-5	K-2	3-5	6-8	K-8	PK-8	7-8	
2025-26	683	648	300	348	362	1010	1045	239	
2026-27	663	628	308	320	338	966	1001	229	
2027-28	630	595	291	304	339	934	969	224	
2028-29	608	573	279	294	326	899	934	217	
2029-30	620	585	281	304	297	882	917	218	
2030-31	618	580	288	292	284	864	902	182	
2031-32	612	574	292	282	274	848	886	176	
2032-33	604	566	290	276	290	856	894	192	
2033-34	609	571	285	286	280	851	889	193	
2034-35	619	579	287	292	269	848	888	179	
2035-36	618	578	289	289	266	844	884	173	

*Projections should be updated annually to reflect changes in in/out-migration of families, births, and similar factors.

Projected Percentage Changes			
School Year	K-8	Diff.	%
2025-26	1010		
2026-27	966	-44	-4.4%
2027-28	934	-32	-3.3%
2028-29	899	-35	-3.7%
2029-30	882	-17	-1.9%
2030-31	864	-18	-2.0%
2031-32	848	-16	-1.9%
2032-33	856	8	0.9%
2033-34	851	-5	-0.6%
2034-35	848	-3	-0.4%
2035-36	844	-4	-0.5%
Change		-166	-16.4%

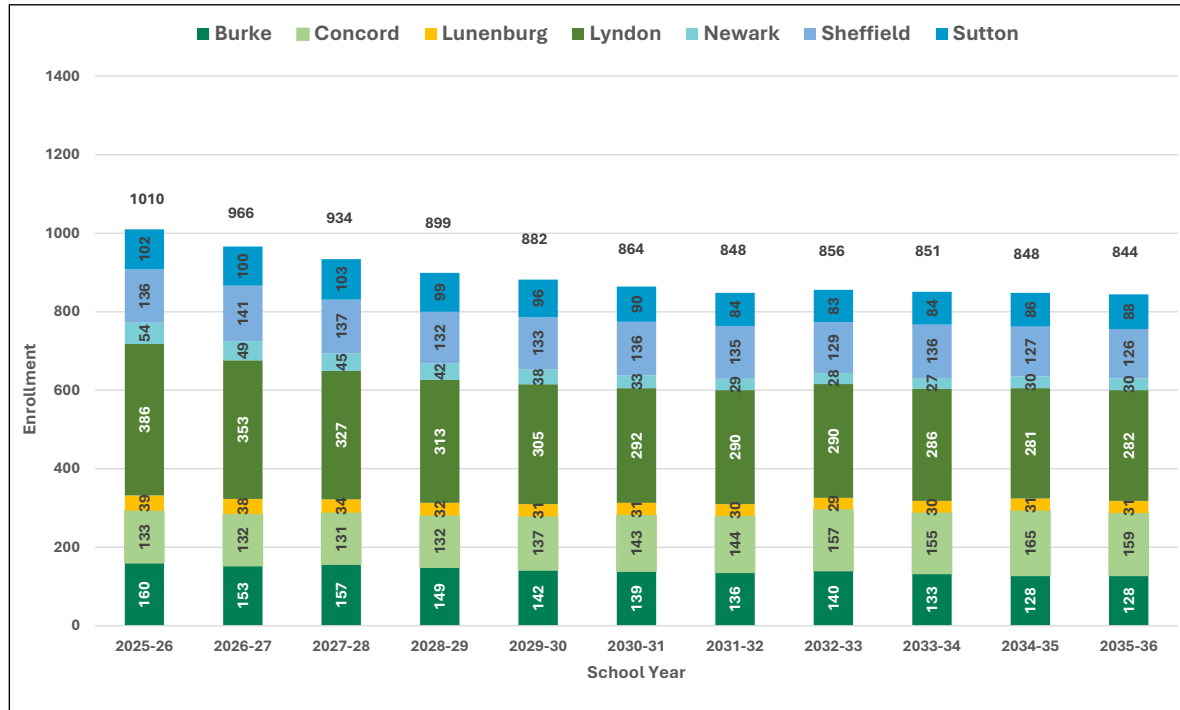


Grades K-8 Projected Enrollment





Grades K-8 Projected Enrollment by Town

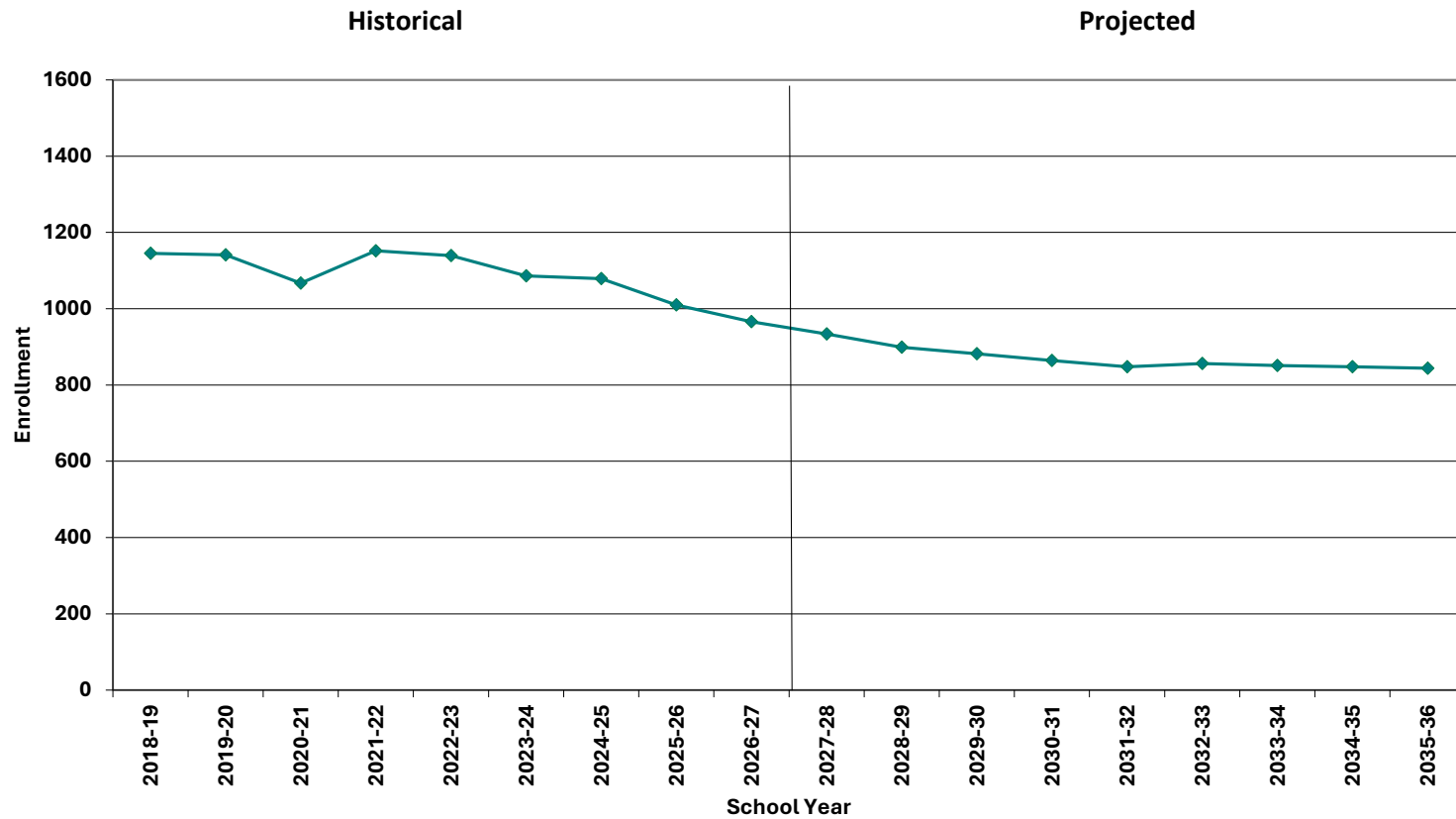


Town	2025-26	2026-27	2027-28	2028-29	2029-30	2030-31	2031-32	2032-33	2033-34	2034-35	2035-36
Burke	16%	16%	17%	17%	16%	16%	16%	16%	16%	15%	15%
Concord	13%	14%	14%	15%	16%	17%	17%	18%	18%	19%	19%
Lunenburg	4%	4%	4%	4%	4%	4%	4%	3%	4%	4%	4%
Lyndon	38%	37%	35%	35%	35%	34%	34%	34%	34%	33%	33%
Newark	5%	5%	5%	5%	4%	4%	3%	3%	3%	4%	4%
Sheffield	13%	15%	15%	15%	15%	16%	16%	15%	16%	15%	15%
Sutton	10%	10%	11%	11%	11%	10%	10%	10%	10%	10%	10%

* percentages rounded

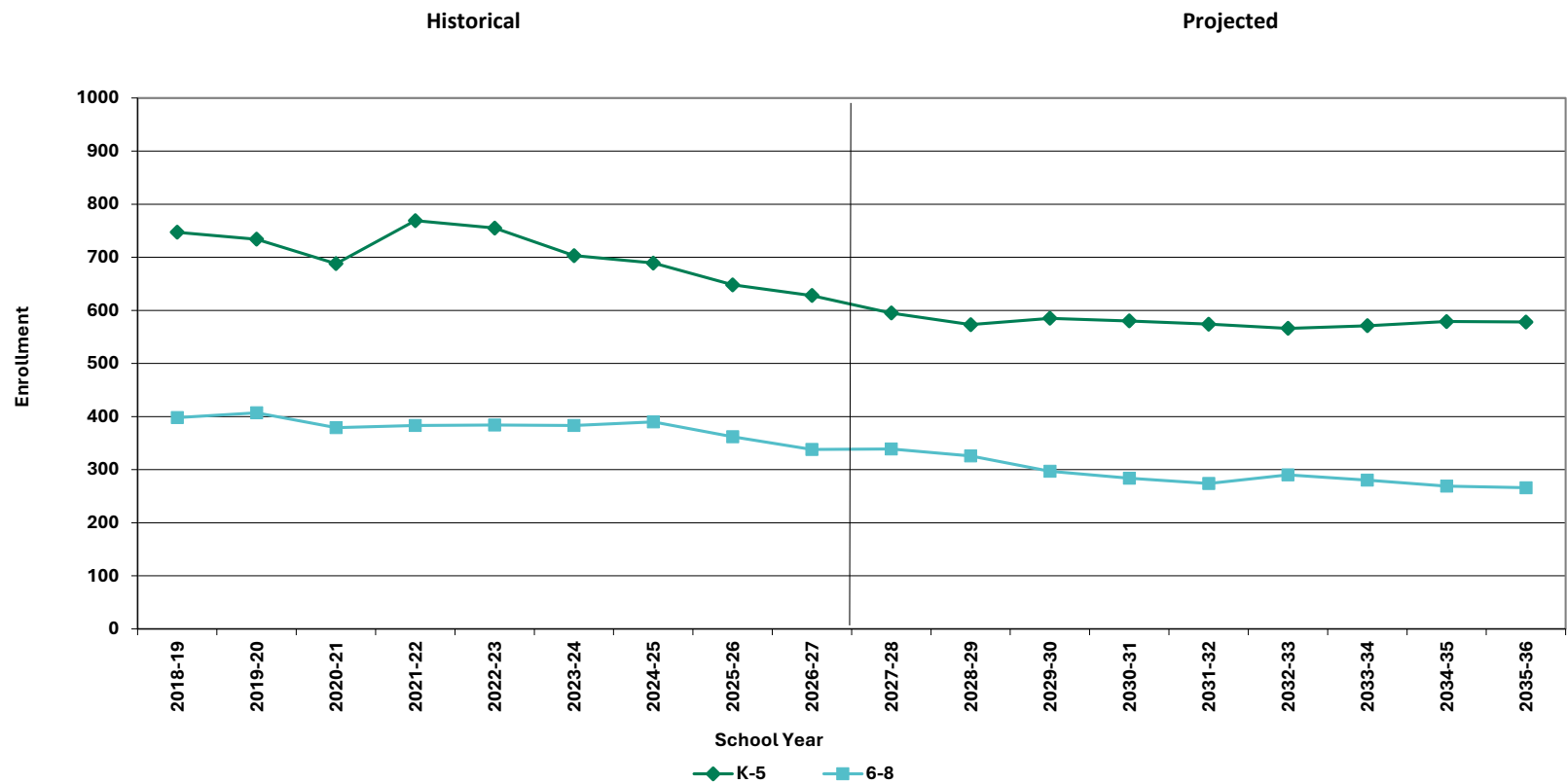


Grades K-8 Historical & Projected Enrollment



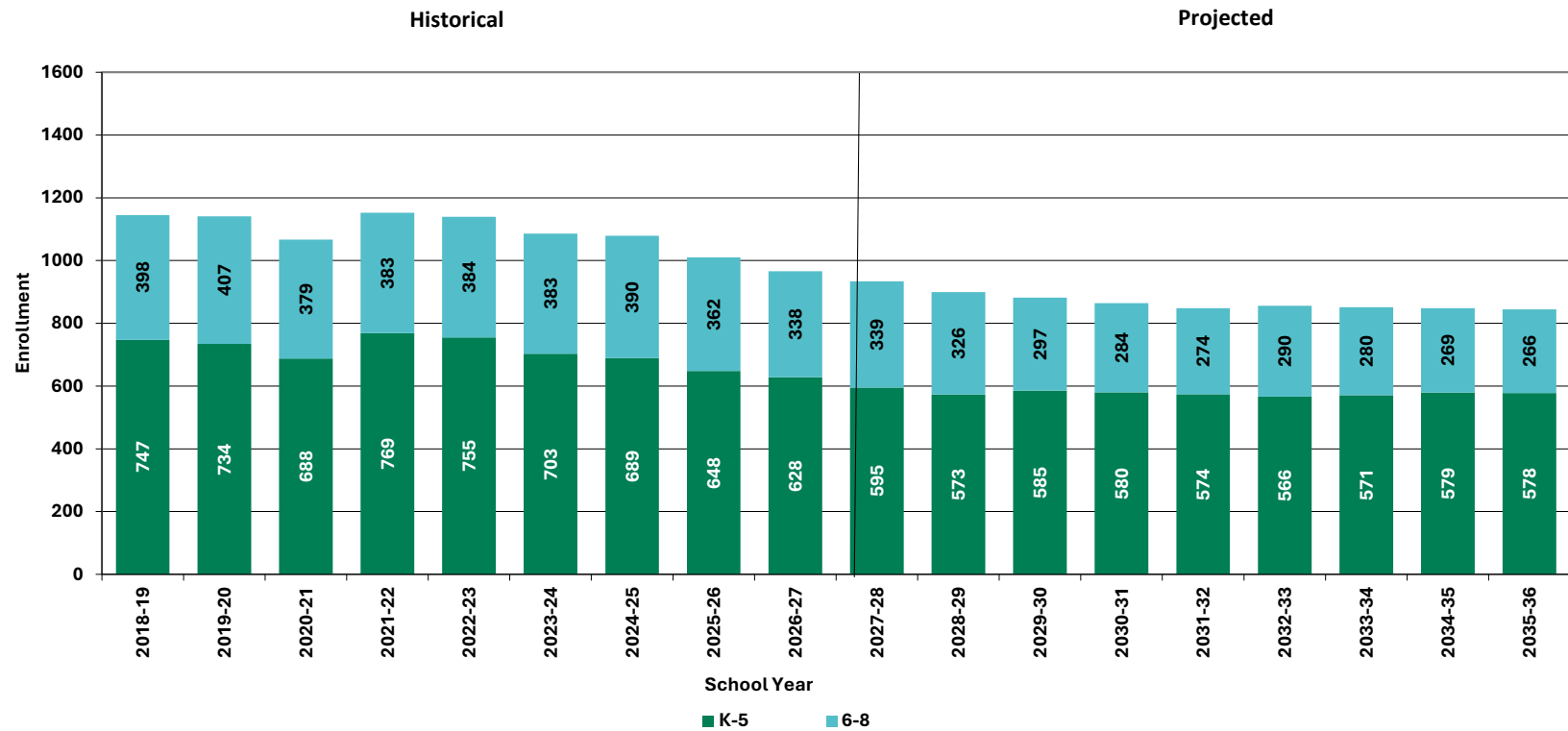


Historical & Projected Enrollment in Grade Combinations



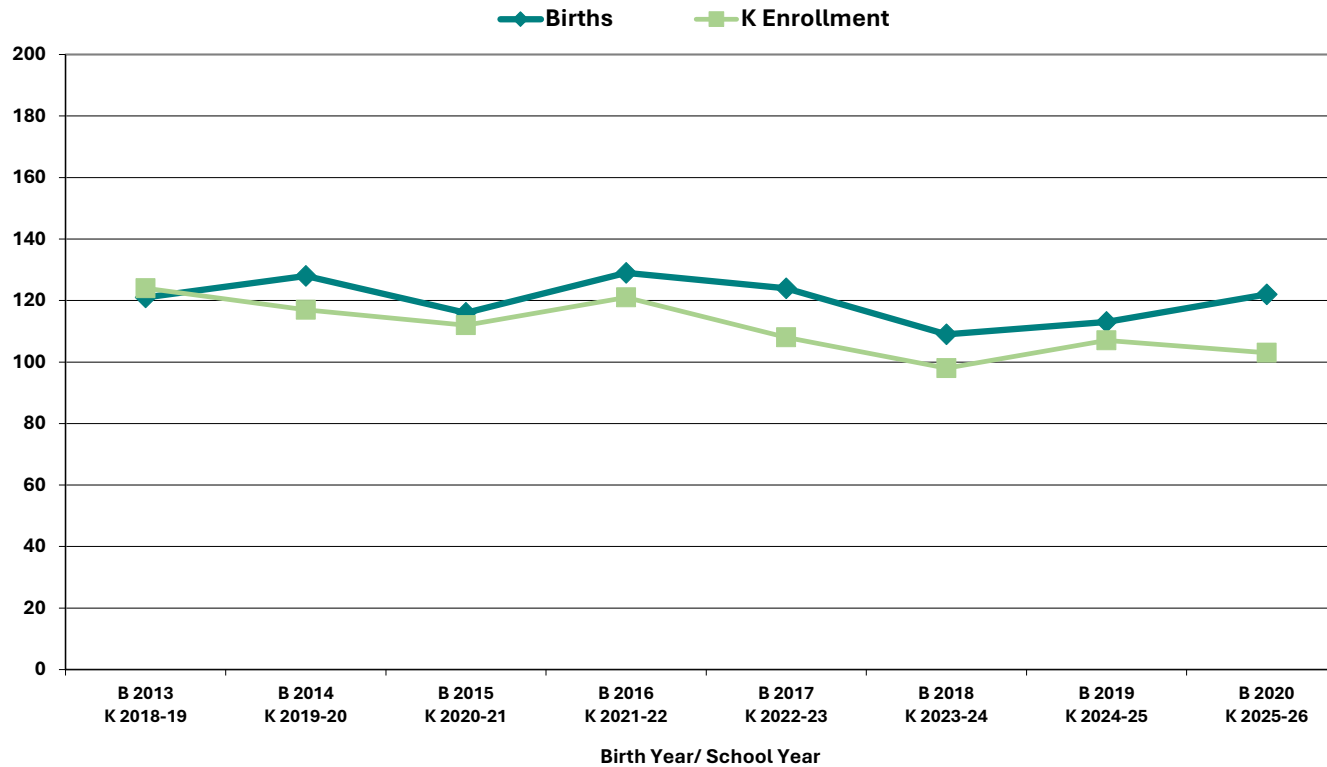


Historical & Projected Enrollment in Grade Combinations





Birth to Kindergarten Relationship



	B 2013 K 2018-19	B 2014 K 2019-20	B 2015 K 2020-21	B 2016 K 2021-22	B 2017 K 2022-23	B 2018 K 2023-24	B 2019 K 2024-25	B 2020 K 2025-26
Births	121	128	116	129	124	109	113	122
Kindergarten	124	117	112	121	108	98	107	103



Additional Information

School Year	9-12 CTE	K-8 Non-Public	K-8 Choice-In	K-8 Choice-Out	K-8 Out District SPED	K-8 Homeschool
2021-22	n/a	n/a	n/a	n/a	n/a	n/a
2022-23	n/a	n/a	n/a	n/a	n/a	n/a
2023-24	n/a	66	< 10 **	0	31	100
2024-25	n/a	46	31	< 10 **	< 10 **	96
2025-26	n/a	n/a	n/a	n/a	n/a	n/a

* Data provided by District.

"n/a" signifies that information was not provided by District.

** < 10 Not reported, to protect subgroups with fewer than 10 students.



New England's PK-12 Enrollments Trends

State	Fall 2013 PK - 12	Fall 2019 PK - 12	Fall 2022 PK - 12	Fall 2023 PK - 12	% Change 2013 - 23	% Change 2019-23	% Change 2022-23
USA	50,044,522	50,796,445	49,618,464	49,516,361	-1.1%	-2.5%	-0.2%
CT	546,200	523,690	513,513	512,652	-6.1%	-2.1%	-0.2%
ME	183,995	180,291	173,853	172,545	-6.2%	-4.3%	-0.8%
MA	955,739	959,394	923,349	914,958	-4.3%	-4.6%	-0.9%
NH	186,310	177,351	168,909	166,594	-10.6%	-6.1%	-1.4%
RI	142,008	143,557	137,449	136,154	-4.1%	-5.2%	-0.9%
VT	88,690	86,759	83,654	82,455	-7.0%	-5.0%	-1.4%

Source: U.S. Department of Education, National Center for Education Statistics, Enrollment in public elementary and secondary schools, by region, state, and jurisdiction: Selected years, fall 1990 through fall 2023, Table 203.20, Report Generated Oct. 2024, NESDEC 5.28.25

Although most New England Districts are seeing a decline in the number of births, NESDEC's experience indicates that the impact on enrollment varies from District to District. Almost half of New England Districts have been growing in PK-12 enrollment, and a similar number are declining (often in rural areas), with the other Districts remaining stable.



Projection Methodology and Reliability

PROJECTION METHODOLOGY

Cohort component (survival) technique is a frequently used method of preparing enrollment projections. NESDEC uses this method, but modifies it in order to move away from projections that are wholly computer- or formula-driven. Such modification permits the incorporation of important, current district-specific demographic information into the generation of enrollment projections (such as in/out-migration of students, resident births, etc.). Percentages are calculated from the historical enrollment data to determine a reliable percentage of increase or decrease in enrollment between any two grades. For example, if 100 students enrolled in Grade 1 in 2024-25 increased to 104 students in Grade 2 in 2025-26, the percentage of survival would be 104%, or a ratio of 1.04. Ratios are calculated between each pair of grades or years in school over several recent years.

After study and analysis of the historical ratios, and based upon a reasonable set of assumptions regarding births, migration rates, retention rates, etc., ratios most indicative of future growth patterns are determined for each pair of grades. The ratios thus selected are applied to the present enrollment statistics to project into future years. The ratios are the key factors in the reliability of the projections, assuming validity of the data at the starting point.

RELIABILITY OF ENROLLMENT PROJECTIONS

Projections can serve as useful guides to school administrators for educational planning. Enrollment projections are more reliable in Years #1-3 in the future and less reliable in the "out-years." Projections four to ten years out may serve as a guide to future enrollments and are useful for planning purposes, but they should be viewed as subject to change given the likelihood of potential shifts in underlying assumptions/trends, such as student migration, births as they relate to Kindergarten enrollment, and other factors.

Projections that are based upon **the children who already are in the district** (the current K-12 population only) will be the most reliable. The second level of reliability will be for those children already **born into the community but not yet old enough to be in school**. The least reliable category is the group for which an estimate must be made **to predict the number of births**, thereby adding additional uncertainty. See these three multi-colored groupings on the "Projected Enrollment" tab.

Annual updates allow for early identification of recent changes in historical trends. When the actual enrollment in a grade is significantly different (higher or lower) from the projected number, it is important (yet difficult) to determine whether this is a one-year aberration or whether a new trend may have begun. **In light of this possibility, NESDEC urges all school districts to have updated enrollment projections developed by NESDEC each October.** This service is available at no cost to affiliated school districts.