



New England School Development Council

**Burke Town School
Kingdom East School District
West Burke, VT**

School Year 2025-26 Enrollment Projection Report

Copyright, New England School Development Council, 2025



Table of Contents

Section	Page
Enrollment Summary.....	1
Historical Enrollment Table.....	2
Historical Enrollment Graph.....	3
Projected Enrollment Table.....	4
Projected Enrollment Graph.....	5
Historical & Projected Enrollment Graph.....	6
Historical & Projected Enrollment in Grade Combinations Line Graph.....	7
Historical & Projected Enrollment in Grade Combinations Stacked Column Graph.....	8
Birth to Kindergarten Relationship Graph.....	9
Additional Information	10
New England PK-12 Enrollment Trends.....	11
Projection Methodology and Reliability	12



Burke, VT Enrollment Summary

NESDEC is pleased to send you this report displaying the past, present, and projected enrollments for your District. It is important to update enrollment projections every year to identify changes in enrollment patterns. Ten-year projections are designed to provide your District with yearly, up-to-date enrollment information that can be used by boards and administrators for effective planning and allocation of resources. We received the enrollment data from the District, and we assume that the method of collecting this data has been consistent from year to year.

Birth data informs Kindergarten enrollment. Each year, NESDEC secures birth data from State sources, providing a snapshot in time as to actual and provisional births as reported by the State, and then uses this birth data to predict Kindergarten enrollments. We only use annual birth data to assure consistency in reporting from year to year. Estimated births, which are an average of the previous five years of birth data, are based on this same snapshot. NESDEC acknowledges the variability of the provisional and the estimated birth data, and notes that the projected Kindergarten enrollments may serve as a guide to future planning.

Enrollment projections are more reliable in Years #1-3 in the future. Projections four to ten years out may serve as a guide to future enrollments and are useful for planning purposes. For more information, please refer to the Projection Methodology and Reliability section of this document.

The NESDEC enrollment projection fell within 9 students of the K-8 total, 169 students projected vs. 160 enrolled.

Births decreased by 2 from a previous ten-year average of 15 to a projected average of 13.

Over the next three years, Grades K-5 enrollments are projected to decrease by 15 students, Grades 6-8 enrollments are projected to increase by 4 students, as students move through the grades.

Note: Lower grade level enrollments are less statistically reliable due to the small grade level cohort size.



Historical Enrollment

School District: **Burke, VT**

10/19/2025

Historical Enrollment By Grade																		
Birth Year	Births*	School Year	PK	K	1	2	3	4	5	6	7	8						
2013	13	2018-19	42	14	19	22	19	24	23	29	21	19						190
2014	18	2019-20	33	19	11	20	22	19	25	25	33	20						232
2015	17	2020-21	12	14	13	11	20	19	18	23	23	28						194
2016	13	2021-22	21	17	16	17	14	20	25	20	24	23						169
2017	17	2022-23	25	16	22	18	18	15	19	27	19	24						176
2018	10	2023-24	15	10	18	20	21	19	11	23	24	20						197
2019	18	2024-25	10	20	10	17	21	23	20	10	22	27						178
2020	20	2025-26	14	16	22	11	17	20	21	23	9	21						203
																		166
																		181
																		170
																		180
																		160
																		174

*Birth data provided by Public Health Vital Records Departments in each state.

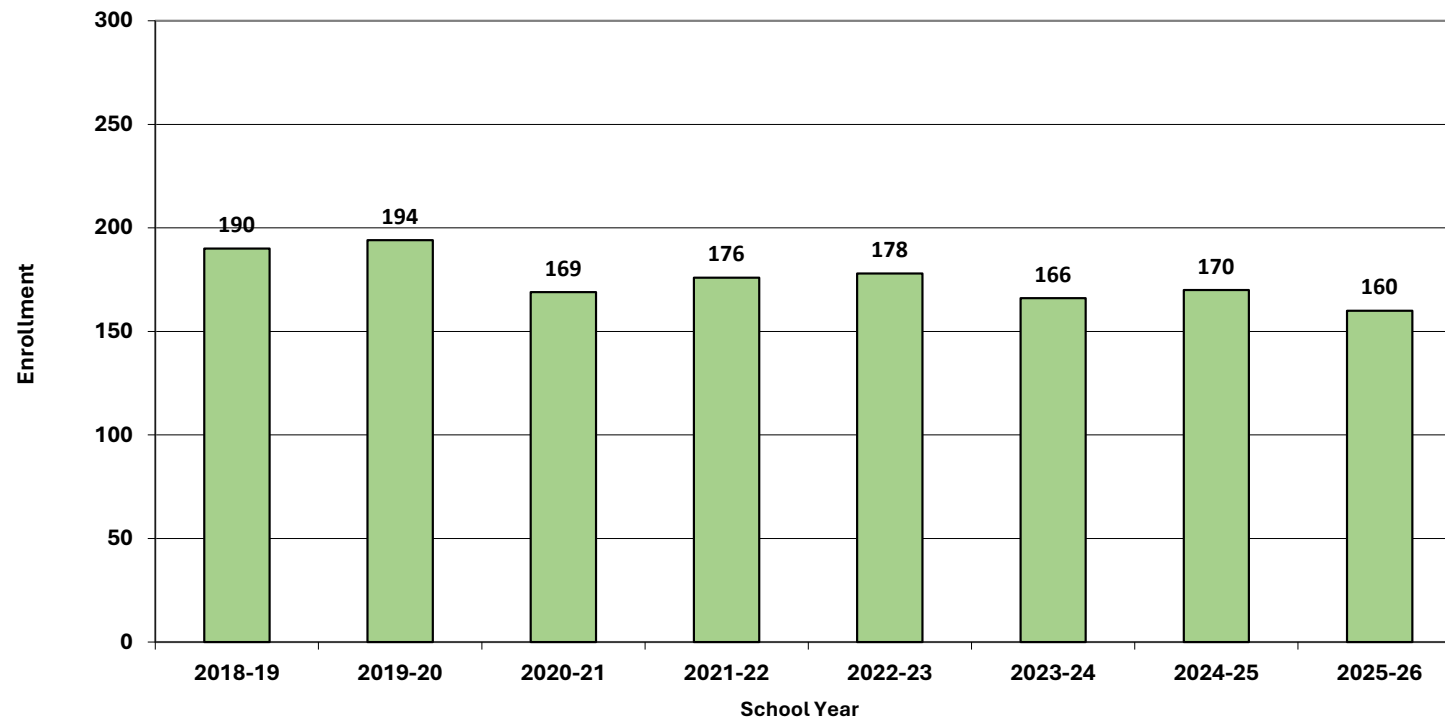
** < 10 Not reported, to protect subgroups with fewer than 10 students.

Historical Enrollment in Grade Combinations										
School Year	PK-5	K-5	K-2	3-5	6-8	K-8	PK-8	7-8		
2018-19	163	121	55	66	69	190	232	40		
2019-20	149	116	50	66	78	194	227	53		
2020-21	107	95	38	57	74	169	181	51		
2021-22	130	109	50	59	67	176	197	47		
2022-23	133	108	56	52	70	178	203	43		
2023-24	114	99	48	51	67	166	181	44		
2024-25	121	111	47	64	59	170	180	49		
2025-26	121	107	49	58	53	160	174	30		

Historical Percentage Changes			
School Year	K-8	Diff.	%
2018-19	190		
2019-20	194	4	2.1%
2020-21	169	-25	-12.9%
2021-22	176	7	4.1%
2022-23	178	2	1.1%
2023-24	166	-12	-6.7%
2024-25	170	4	2.4%
2025-26	160	-10	-5.9%
Change		-30	-15.8%



Grades K-8 Historical Enrollment





Projected Enrollment

School District: Burke, VT

10/19/2025

Note: Lower grade level enrollments are less statistically reliable due to the small grade level cohort size.

Enrollment Projections By Grade*																			
Birth Year	Births*		School Year	PK	K	1	2	3	4	5	6	7	8						
2020	20		2025-26	14	16	22	11	17	20	21	23	9	21					160	174
2021	13		2026-27	14	13	17	22	12	18	18	23	21	9					153	167
2022	11		2027-28	14	11	14	17	24	12	16	20	21	22					157	171
2023	12		2028-29	14	12	12	14	18	25	11	17	18	22					149	163
2024	15	(est.)	2029-30	14	14	13	12	15	19	22	12	16	19					142	156
2025	14	(est.)	2030-31	15	14	15	13	13	16	17	24	11	16					139	154
2026	13	(est.)	2031-32	15	13	15	15	14	13	14	19	22	11					136	151
2027	13	(est.)	2032-33	15	13	14	15	16	14	12	15	18	23					140	155
2028	13	(est.)	2033-34	15	13	14	14	16	17	13	13	14	19					133	148
2029	14	(est.)	2034-35	16	13	14	14	15	17	15	14	12	14					128	144
2030	13	(est.)	2035-36	16	13	14	14	15	16	15	16	13	12					128	144

Note: Ungraded students (UNGR) often are high school students whose anticipated years of graduation are unknown, or students with special needs - UNGR not included in Grade Combinations for 7-12, 9-12, etc.

Based on an estimate of births

Based on children already born

Based on students already enrolled

*Birth data provided by Public Health Vital Records Departments in each state.

** < 10 Not reported, to protect subgroups with fewer than 10 students.

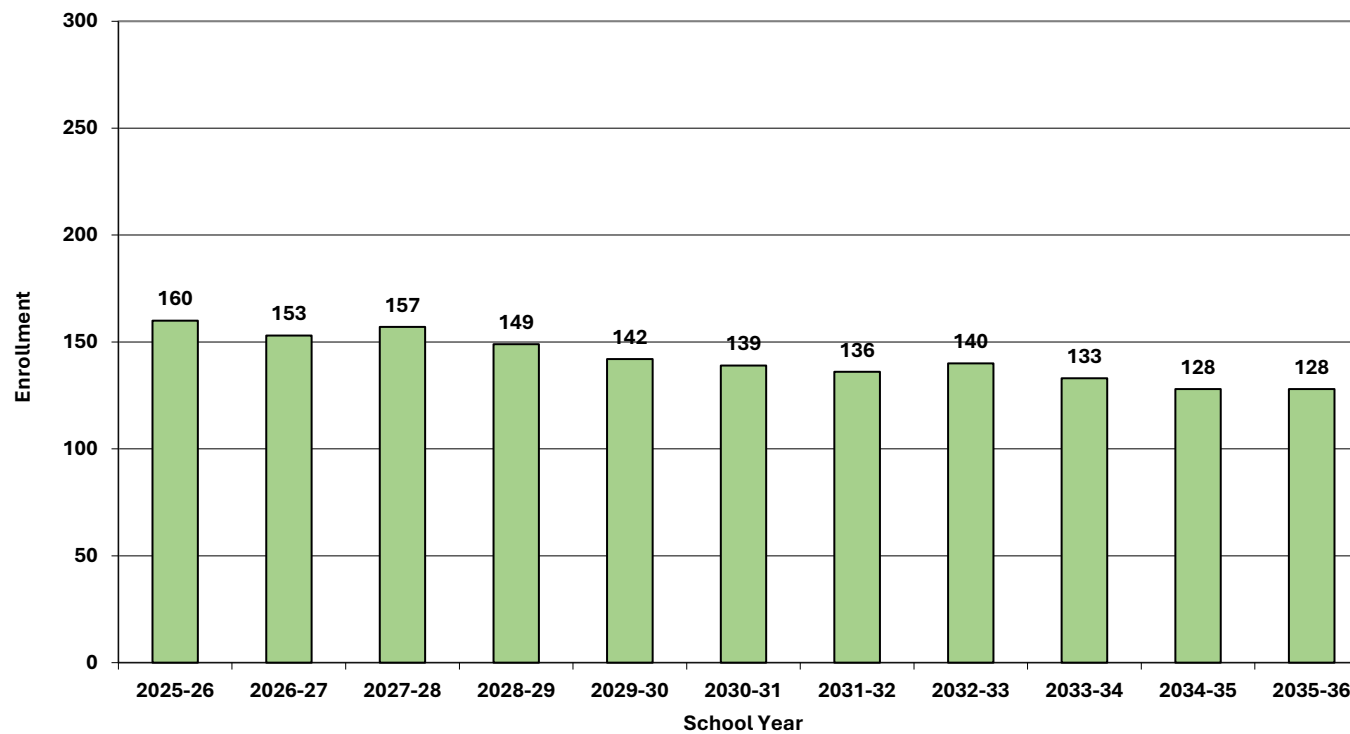
Projected Enrollment in Grade Combinations*									
School Year	PK-5	K-5	K-2	3-5	6-8	K-8	PK-8	7-8	
2025-26	121	107	49	58	53	160	174	30	
2026-27	114	100	52	48	53	153	167	30	
2027-28	108	94	42	52	63	157	171	43	
2028-29	106	92	38	54	57	149	163	40	
2029-30	109	95	39	56	47	142	156	35	
2030-31	103	88	42	46	51	139	154	27	
2031-32	99	84	43	41	52	136	151	33	
2032-33	99	84	42	42	56	140	155	41	
2033-34	102	87	41	46	46	133	148	33	
2034-35	104	88	41	47	40	128	144	26	
2035-36	103	87	41	46	41	128	144	25	

*Projections should be updated annually to reflect changes in in/out-migration of families, births, and similar factors.

Projected Percentage Changes			
School Year	K-8	Diff.	%
2025-26	160		
2026-27	153	-7	-4.4%
2027-28	157	4	2.6%
2028-29	149	-8	-5.1%
2029-30	142	-7	-4.7%
2030-31	139	-3	-2.1%
2031-32	136	-3	-2.2%
2032-33	140	4	2.9%
2033-34	133	-7	-5.0%
2034-35	128	-5	-3.8%
2035-36	128	0	0.0%
Change		-32	-20.0%

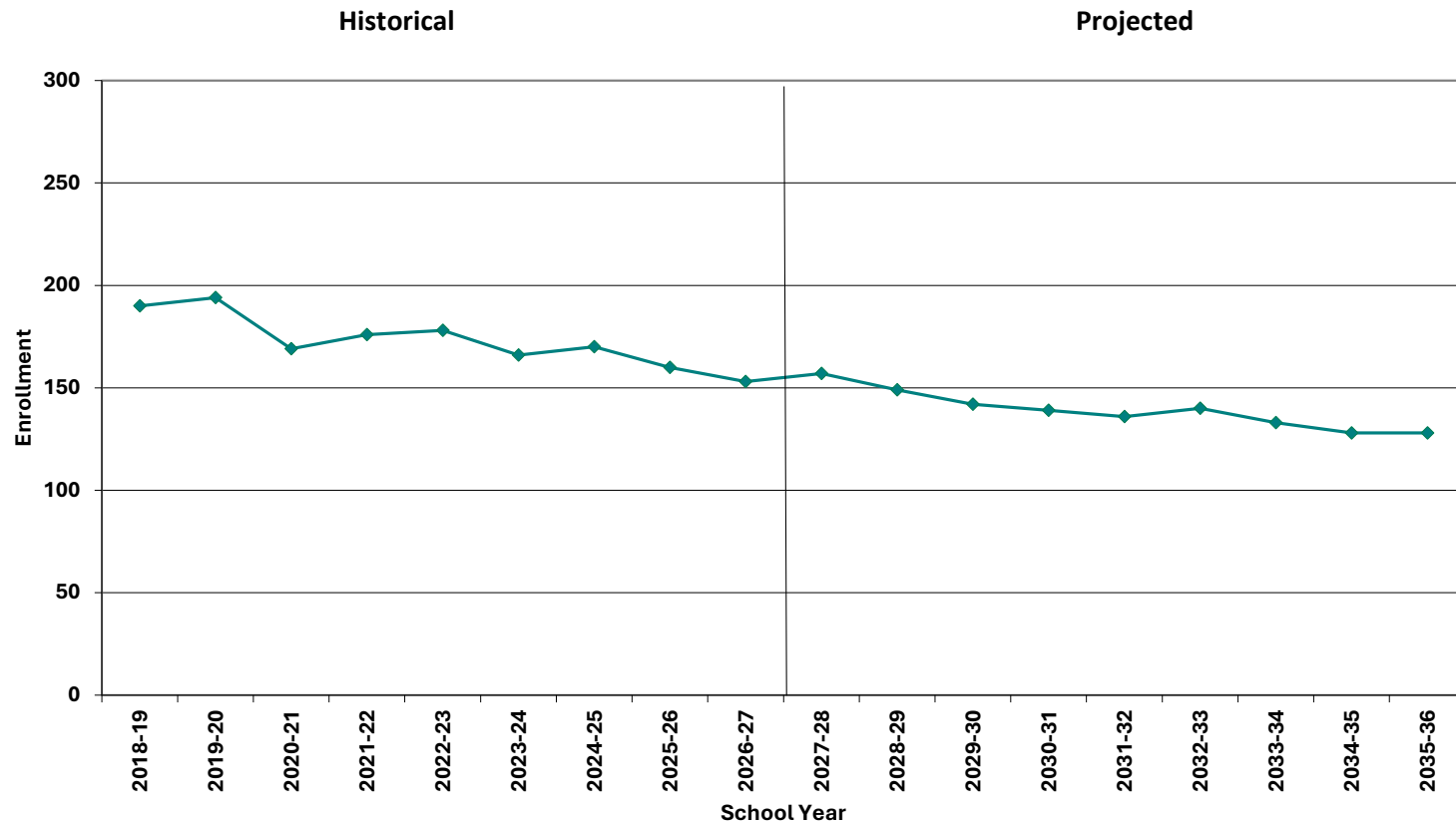


Grades K-8 Projected Enrollment



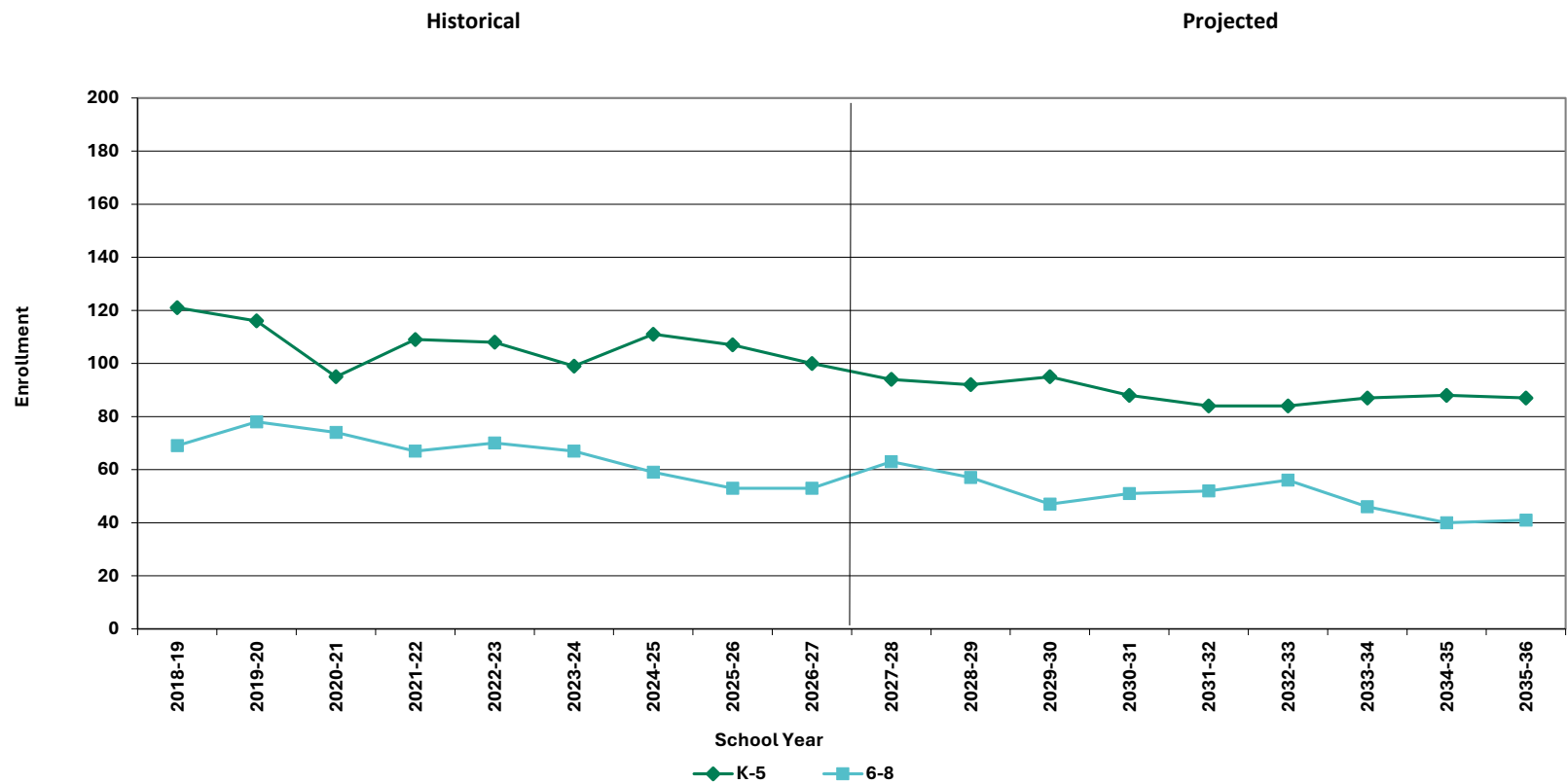


Grades K-8 Historical & Projected Enrollment



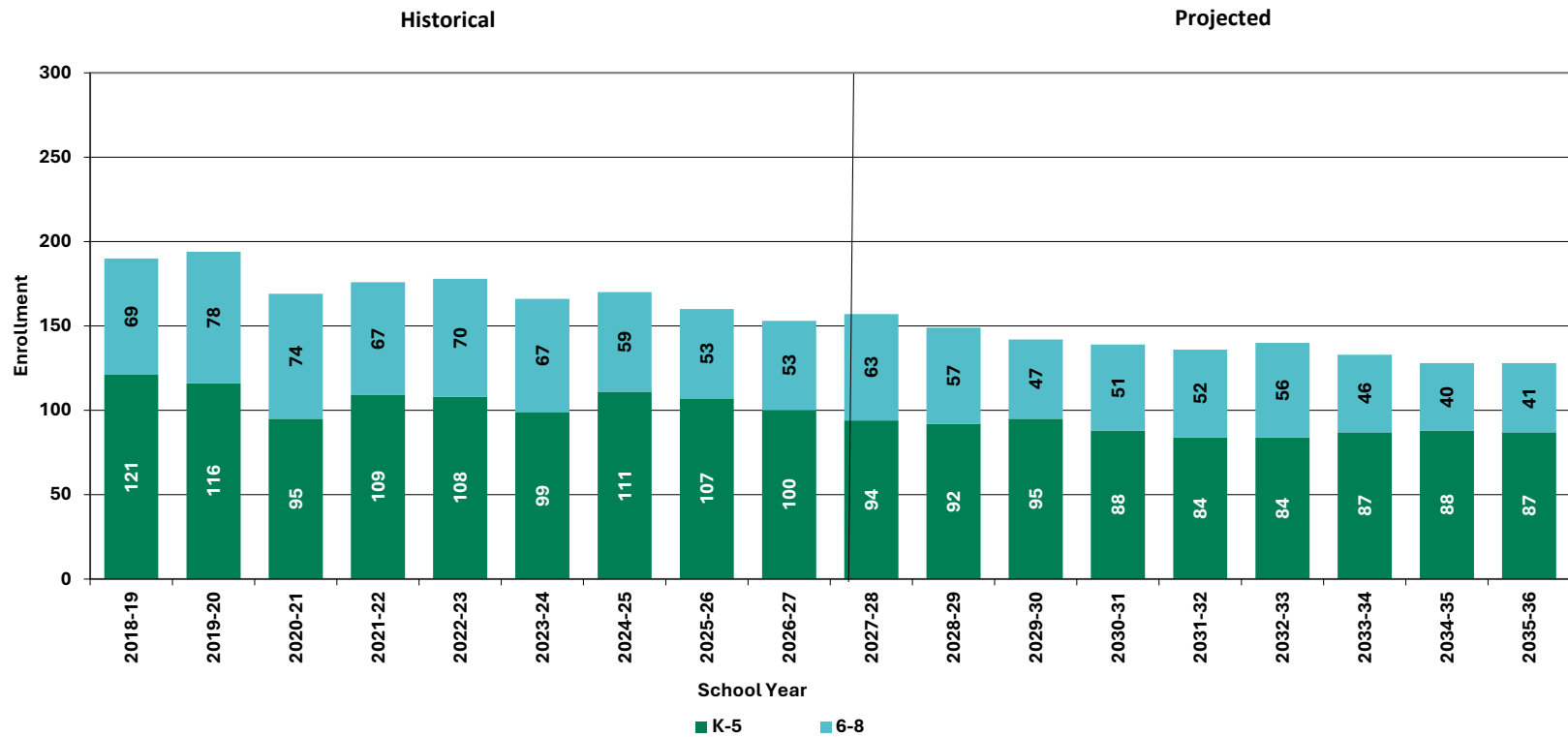


Historical & Projected Enrollment in Grade Combinations



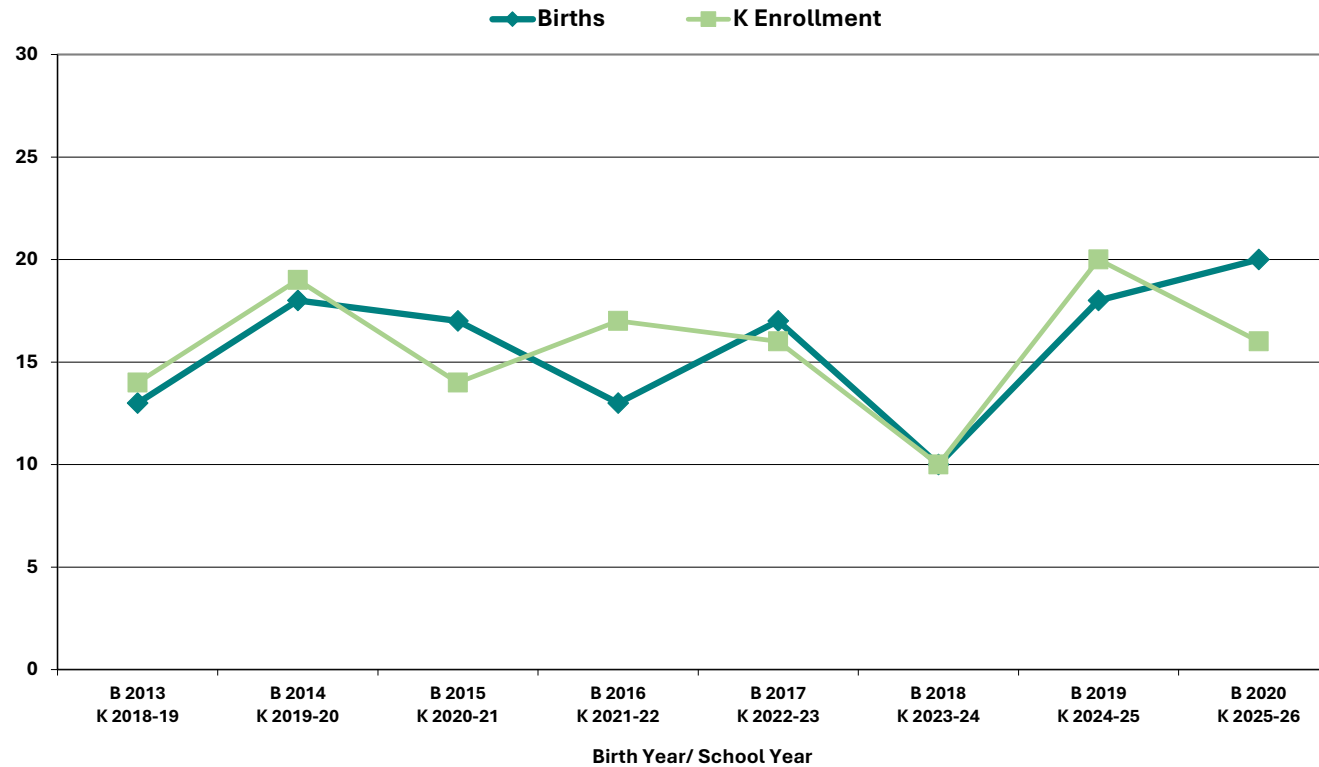


Historical & Projected Enrollment in Grade Combinations





Birth to Kindergarten Relationship



	B 2013 K 2018-19	B 2014 K 2019-20	B 2015 K 2020-21	B 2016 K 2021-22	B 2017 K 2022-23	B 2018 K 2023-24	B 2019 K 2024-25	B 2020 K 2025-26
Births	13	18	17	13	17	10	18	20
Kindergarten	14	19	14	17	16	10	20	16



Additional Information

School Year	9-12 CTE	K-8 Non-Public	K-8 Choice-In	K-8 Choice-Out	K-8 Out District SPED	K-8 Homeschool
2021-22	n/a	n/a	n/a	n/a	n/a	n/a
2022-23	n/a	n/a	n/a	n/a	n/a	n/a
2023-24	n/a	26	< 10 **	0	< 10 **	< 10 **
2024-25	n/a	13	< 10 **	0	< 10 **	< 10 **
2025-26	n/a	n/a	n/a	n/a	n/a	n/a

* Data provided by District.

"n/a" signifies that information was not provided by District.

** < 10 Not reported, to protect subgroups with fewer than 10 students.



New England's PK-12 Enrollments Trends

State	Fall 2013 PK - 12	Fall 2019 PK - 12	Fall 2022 PK - 12	Fall 2023 PK - 12	% Change 2013 - 23	% Change 2019-23	% Change 2022-23
USA	50,044,522	50,796,445	49,618,464	49,516,361	-1.1%	-2.5%	-0.2%
CT	546,200	523,690	513,513	512,652	-6.1%	-2.1%	-0.2%
ME	183,995	180,291	173,853	172,545	-6.2%	-4.3%	-0.8%
MA	955,739	959,394	923,349	914,958	-4.3%	-4.6%	-0.9%
NH	186,310	177,351	168,909	166,594	-10.6%	-6.1%	-1.4%
RI	142,008	143,557	137,449	136,154	-4.1%	-5.2%	-0.9%
VT	88,690	86,759	83,654	82,455	-7.0%	-5.0%	-1.4%

Source: U.S. Department of Education, National Center for Education Statistics, Enrollment in public elementary and secondary schools, by region, state, and jurisdiction: Selected years, fall 1990 through fall 2023, Table 203.20, Report Generated Oct. 2024, NESDEC 5.28.25

Although most New England Districts are seeing a decline in the number of births, NESDEC's experience indicates that the impact on enrollment varies from District to District. Almost half of New England Districts have been growing in PK-12 enrollment, and a similar number are declining (often in rural areas), with the other Districts remaining stable.



Projection Methodology and Reliability

PROJECTION METHODOLOGY

Cohort component (survival) technique is a frequently used method of preparing enrollment projections. NESDEC uses this method, but modifies it in order to move away from projections that are wholly computer- or formula-driven. Such modification permits the incorporation of important, current district-specific demographic information into the generation of enrollment projections (such as in/out-migration of students, resident births, etc.). Percentages are calculated from the historical enrollment data to determine a reliable percentage of increase or decrease in enrollment between any two grades. For example, if 100 students enrolled in Grade 1 in 2024-25 increased to 104 students in Grade 2 in 2025-26, the percentage of survival would be 104%, or a ratio of 1.04. Ratios are calculated between each pair of grades or years in school over several recent years.

After study and analysis of the historical ratios, and based upon a reasonable set of assumptions regarding births, migration rates, retention rates, etc., ratios most indicative of future growth patterns are determined for each pair of grades. The ratios thus selected are applied to the present enrollment statistics to project into future years. The ratios are the key factors in the reliability of the projections, assuming validity of the data at the starting point.

RELIABILITY OF ENROLLMENT PROJECTIONS

Projections can serve as useful guides to school administrators for educational planning. Enrollment projections are more reliable in Years #1-3 in the future and less reliable in the "out-years." Projections four to ten years out may serve as a guide to future enrollments and are useful for planning purposes, but they should be viewed as subject to change given the likelihood of potential shifts in underlying assumptions/trends, such as student migration, births as they relate to Kindergarten enrollment, and other factors.

Projections that are based upon **the children who already are in the district** (the current K-12 population only) will be the most reliable. The second level of reliability will be for those children already **born into the community but not yet old enough to be in school**. The least reliable category is the group for which an estimate must be made **to predict the number of births**, thereby adding additional uncertainty. See these three multi-colored groupings on the "Projected Enrollment" tab.

Annual updates allow for early identification of recent changes in historical trends. When the actual enrollment in a grade is significantly different (higher or lower) from the projected number, it is important (yet difficult) to determine whether this is a one-year aberration or whether a new trend may have begun. **In light of this possibility, NESDEC urges all school districts to have updated enrollment projections developed by NESDEC each October.** This service is available at no cost to affiliated school districts.