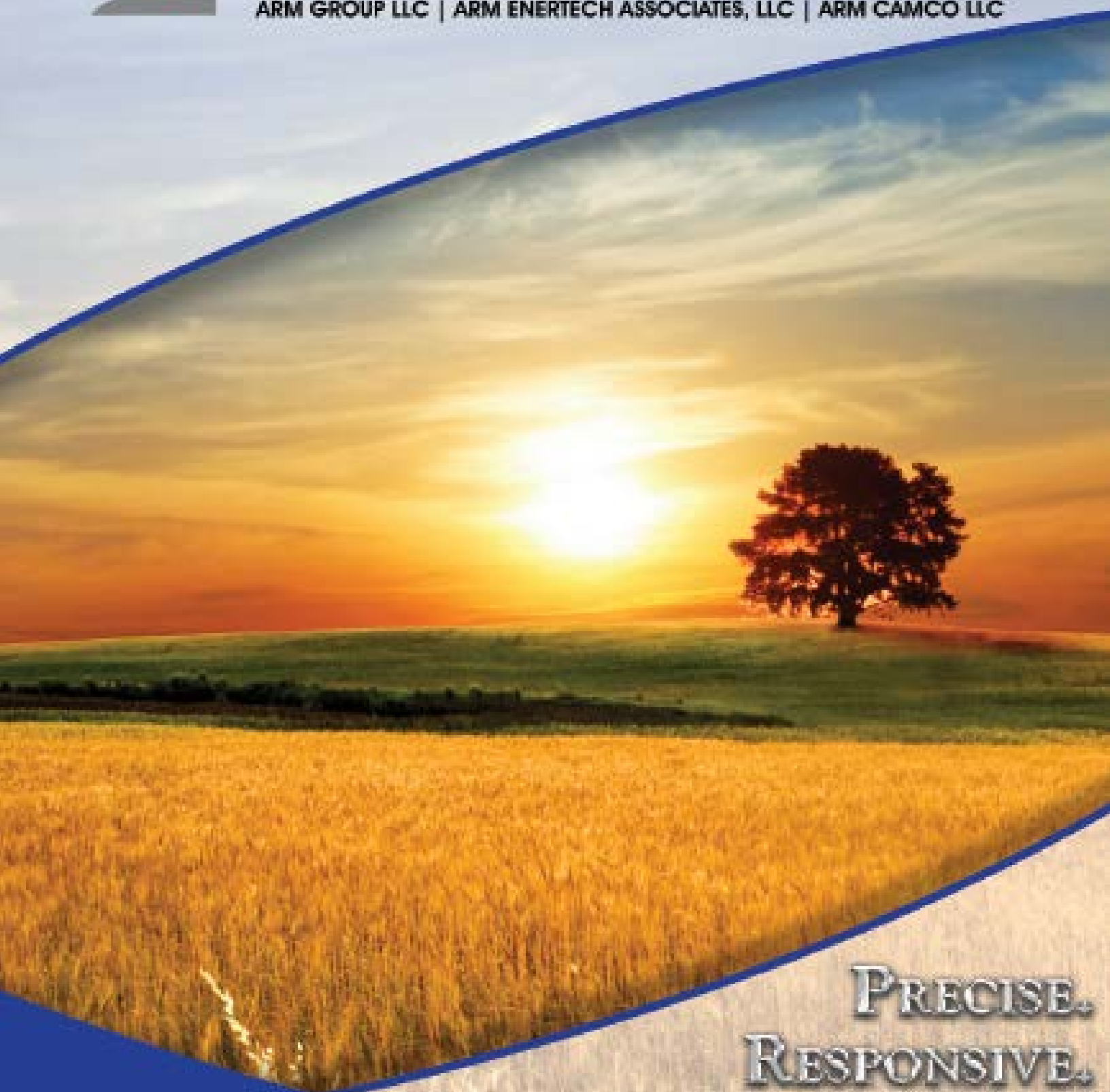




# ARM Group Enterprises

ARM GROUP LLC | ARM ENERTECH ASSOCIATES, LLC | ARM CAMCO LLC



PRECISE.  
RESPONSIVE.  
SOLUTIONS.

Corporate  
Profile

# Table of Contents

Welcome to ARM Group .....	3
Why ARM Group?.....	4
ARM Group History .....	5
Solid Waste Management Services.....	7
Solar & Battery Storage Services.....	9
Electrical Engineering, Automation & Controls.....	11
Power System Repair, Testing & Field Services.....	13
Electrical Equipment.....	14
Environmental Services.....	15
Property Assessment Services.....	16
Natural Gas Services.....	17
Geotechnical Engineering .....	19
Geophysical Services.....	21
Water Resources.....	23
Stormwater Management Services.....	24
Natural Resource Services .....	25
Construction Phase Services .....	27
Mine & Quarry Services .....	29
Natural System Design.....	31
UST & AST Consulting Services .....	33
GIS Services.....	34
Wind & Geothermal Energy Services.....	35
Why We Are Different .....	37
ARM Group Recognition.....	39
What Do Our Clients Say.....	40
Locations.....	41

# Practice Areas



Civil & Survey



Electrical /  
Mechanical /  
Automation



Electrical  
Testing /  
Repair



Environmental



Geophysics



Geotechnical



Mine & Quarry



Natural  
Gas



Natural  
Resources



Energy & Power



Solid  
Waste



Water  
Resources

PRECISE.  
RESPONSIVE.  
SOLUTIONS.

# Welcome to ARM Group Enterprises

ARM Group Enterprise Inc. (ARME), founded in 1998, now serves as the parent company to three wholly owned subsidiaries: ARM Group LLC, ARM EnerTech Associates LLC (AETA) and ARM CAMCO LLC (CAMCO). ARME is a nationally recognized engineering and science firm, performing civil & environmental engineering, electrical & automation, and technical field services work in 12 practice areas in the Mid-Atlantic region and selectively throughout the United States.

Headquartered in the “Sweetest Place on Earth” (Hershey, PA), ARME has been repeatedly recognized nationally by the Engineering News-Record (ENR) as a Top 200 Environmental Firm and a Top 500 Design Firm in the US, selected multiple times by the Central Penn Business Journal as one of the “Best Places to Work”, and viewed by clients, the legal community, and regulators as an industry leader in providing Precise. Responsive. Solutions. From anticipating your needs, paying careful attention to detail, and showing care in every interaction, you will get the technical solutions you need along with a personalized, human experience that makes each project more enjoyable.



#### Locations:

Hershey, PA (Corporate); State College, PA; Pittsburgh, PA; Lehigh Valley, PA; Jessup, PA; Johnstown, PA; Mechanicsburg PA; Ebensburg, PA; West Chester, PA; Columbia, MD; Marlton, NJ; Manalapan, NJ; Ashland, VA; Scott Depot, WV; Cary, NC



# Why ARM Group?

## Precise.

ARM Group's team includes top licensed civil, geotechnical, environmental, structural, and electrical engineers (PEs) and geologists (PGs), as well as environmental scientists, hydrologists, biologists, geophysicists, and other specialized experts. Our 250-plus team members average more than 17 years of experience.

Repeatedly acknowledged as a Best Place To Work, ARM Group fosters an environment of professional and personal fulfillment and growth. This allows our team to concentrate on precision for our clients, to make sure the job is done right the first time.

## Responsive.

As a 100% employee-owned company, we offer the highest level of responsiveness and client care. When speed counts, our dedicated employee-owners meet aggressive schedules with a sense of urgency. Moreover, our intimate knowledge of regulatory requirements, and trusted relationships with regulatory decision makers results in faster approvals and swifter project completions.

Our clients describe us as: “extremely responsive”, “accessible”, “on time”, “a great partner”, “readily available”, “flexible”, “always ready to assist”, “dependable”, “helpful”, “always accommodating”, “works tirelessly”, “never lets us down”.

## Solutions.

ARM Group provides practical, creative solutions that work. We are an easy choice compared to competitors that fail to meet schedules, lack adequate experience, perform in the theoretical, and create exposure to delays, expanding work scopes, and unexpected cost increases.

We have earned a “Top Firm” designation by Engineering News Record. With extensive local knowledge and thousands of successful projects under our belt, we offer a coordinated multi-disciplinary approach to anticipate and solve problems.



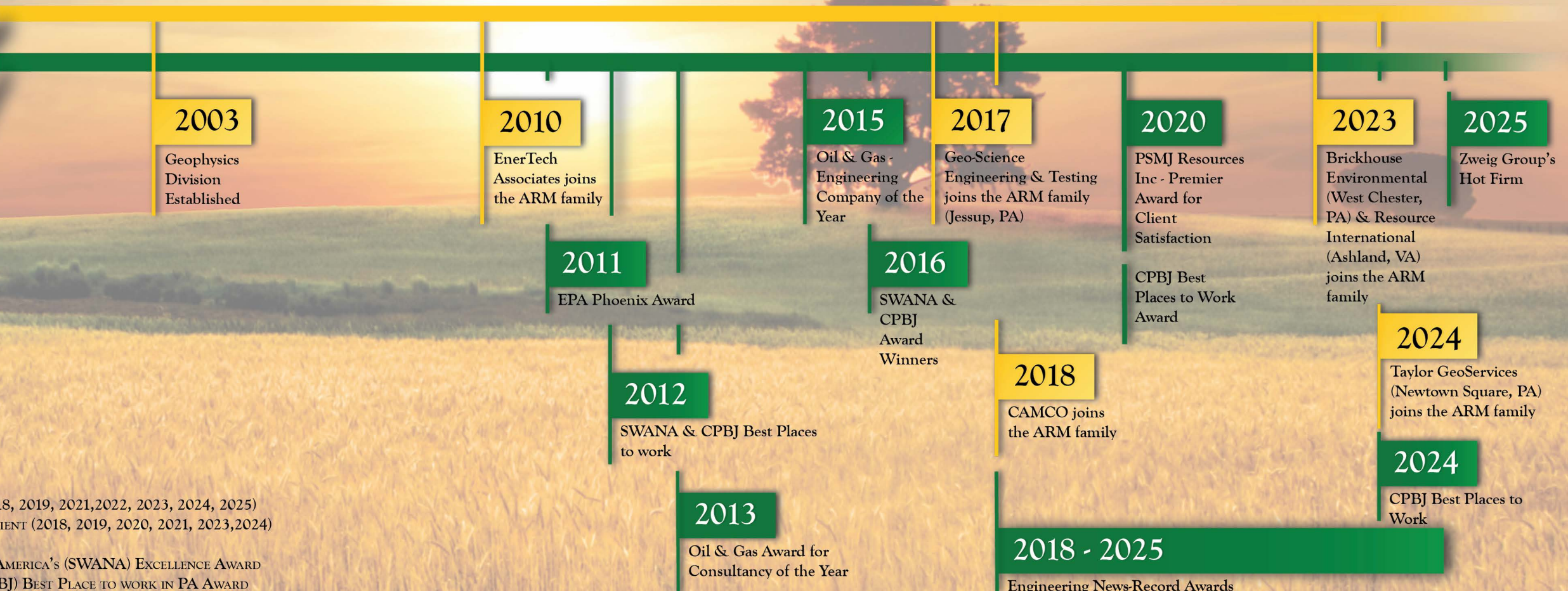
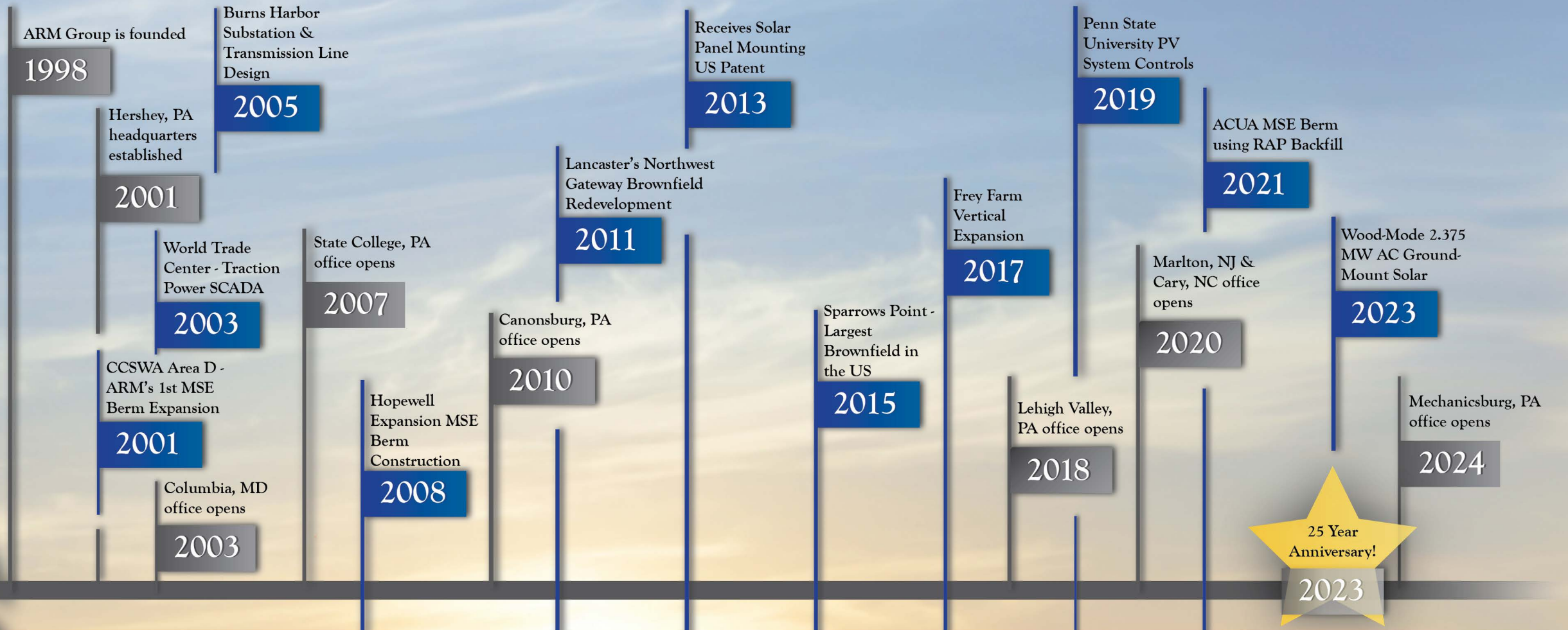
PRECISE.  
RESPONSIVE.  
SOLUTIONS.

# Company History



## ARM Group Enterprises Inc.

Precise. Responsive. Solutions.



7-TIME ENR TOP 500 DESIGN FIRM IN THE US RECIPIENT (2018, 2019, 2021, 2022, 2023, 2024, 2025)  
 6-TIME ENR TOP 200 ENVIRONMENTAL FIRM IN THE US RECIPIENT (2018, 2019, 2020, 2021, 2023, 2024)  
 8-TIME ENR EAST TOP DESIGN FIRMS (2018-2025)  
 3-TIME WINNER OF THE SOLID WASTE ASSOCIATION OF NORTH AMERICA'S (SWANA) EXCELLENCE AWARD  
 3-TIME WINNER OF THE CENTRAL PENN BUSINESS JOURNAL (CPBJ) BEST PLACE TO WORK IN PA AWARD

# Solid Waste Management Services

Sustainability and cost-effectively managing waste materials becomes increasingly difficult as existing disposal facilities approach capacity and available land resources diminish. ARM Group engineers and scientists have been successfully addressing waste disposal challenges involving solid waste materials for over 25 years. Whether the challenge is locating the facility, permitting, design, expansion, monitoring, closure, remediation, or negotiating with regulatory agencies, our professionals have the experience to identify and implement successful solutions. We work closely with municipalities, regulators, industry and waste authorities to incorporate emerging technologies with established practices to maximize site efficiency, minimize waste generation, and remediate impacted areas.

## Permitting Support

- Environmental Assessment
- Harms/Benefits Analyses (PA)
- Wetlands Delineation
- Air Quality
- Closure/Post-Closure
- Facility Expansions
- Regulatory Coordination

## Design Services

- Mechanically Stabilized Earth (MSE) Berms
- Landfill Expansions
- Transfer Stations
- Recycling and Waste Processing Facilities
- Landfill Gas Collection and Conveyance Systems
- Liner System and Closure System Designs
- Remedial Systems (groundwater, gas migration, waste relocation, etc.)
- Stream and Wetland Mitigation and Relocation

## Landfill Operations Support

- Operations Evaluation
- Operations and Maintenance Support
- Landfill Gas Monitoring Plans
- Groundwater Monitoring Plans
- Gas Well Installation
- Monitoring Well Installation
- Leachate Discharge Sampling
- Discharge Monitoring Reports
- Air Compliance Reporting
- Annual Air Emissions Certification Report
- Greenhouse Gas Emissions Reporting



## Construction Services

- Bid Document Preparation
- Technical Specifications and CQA Plans
- Constructability Reviews
- Construction Management and Administration
- CQA Monitoring
- Materials Testing

## Waste Reduction

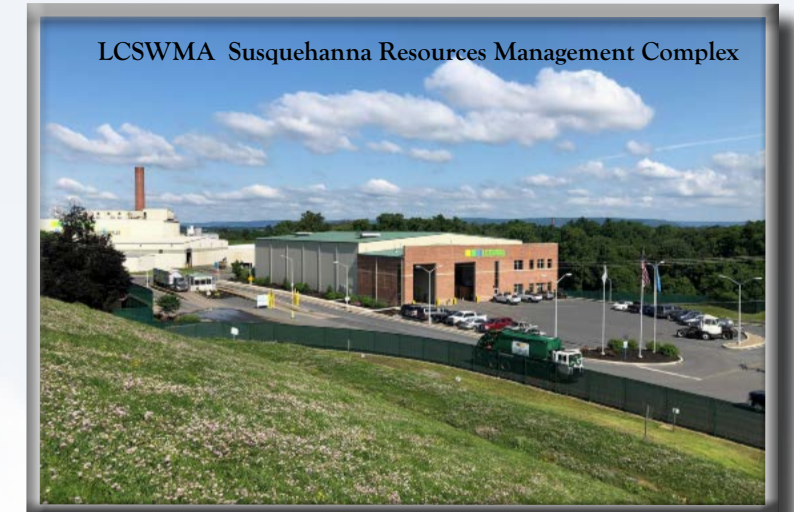
- Solid Waste Management Plans
- Organics Recycling Design and Permitting
- Waste Processing, Sorting and Recycling

## Renewable Energy

- Wind
- Solar
- Landfill Gas to Energy Design and Permitting
- Anaerobic Digestion
- Geothermal

## Geotechnical Engineering

- Subsurface Evaluation and Foundation Design
- Ground Improvement Measures
- Mine Subsidence Evaluations



## Compliance/Inspection Services

- Groundwater Sampling and Monitoring
- Landfill Gas Sampling (Tier I & Tier II)
- Analysis of Emissions
- MSE Berm Inspections
- Macroinvertebrate and Wetland Assessments
- GIS Data Management

## Mechanical/Electrical/Automation Services

- Control System and Automation Design and Installation
- Electrical Engineering, Interconnection, Transmission
- SCADA Systems

# Solar & Battery Storage Services

With the adverse effects of climate change accelerating and the cost of renewable energy continuing to drop, the development and construction of carbon-free power generation is gaining momentum across North America. Unlike most civil and environmental engineering firms, ARM's integrated electrical engineering, substation engineering, automation expertise, and electrical testing capabilities uniquely complement our civil, environmental, ecological, geotechnical, and geophysical capabilities to provide you with a true one-stop-shop for solar projects of all sizes. From initial due diligence, through design, permitting and construction, ARM can support your project from inception through final commissioning.

## Permitting, Engineering & Consulting Services

- Critical Issue Studies
- Feasibility Studies
- Electrical Engineering
- Substation Design
- Interconnection Services
- Surveying
- Environmental Assessments
- Rare/Endangered Species
- Geotechnical Studies
- Geophysical Studies
- Shading/Glare Studies
- Land Development Planning & Permitting
- Construction Management
- Design-Build
- Testing & Commissioning
- Stream and Wetland Delineations
- Archaeological Services

## Design-Build Services

ARM Group's extensive engineering, permitting, testing, construction management, procurement and installation expertise is applied to deliver an integrated solar design-build solutions for customers that seek a one stop shop. Clients choose ARM Group for speed, growth and execution, with a large focus on safety and full cost transparency.

## How Can We Help You?

**Owner's Representative:** Assisting clients with selecting the optimal system size and components, providing engineering and permitting services, bidding it out to get best prices, and construction-phase oversight to ensure it gets built correctly, on-time, and on-budget.

## Engineering/Permitting/EOR Services:

Supporting our clients with pre-development and due diligence services, land development engineering/permitting, and post-Notice To Proceed (NTP) design engineering and construction-phase services.

**Design-Build:** For Owners seeking turn-key project delivery, we provide design, permitting, procurement and subcontracted installation services.

## Electrical Services

Connecting solar generation to the utility grid can be complicated and can present unique challenges. ARM Group offers a wide range of electrical engineering, design, testing and field services for solar and battery storage industries. From Design & Engineering to Support Services, ARM Group's staff can assist with:

- Due Diligence
- Production & 3D Design & Shading Analyses
- Financial Modeling
- Battery Storage Design
- Power / Electrical Systems
- Construction Phase Services
- Testing & Commissioning
- MV Pole Line Engineering
- Interconnection with ISOs (PJM, NYISO) and local utilities



## Testing & Automation/Controls

ARM Group offers a wide range of automation and control system options for solar and battery storage systems. ARM Group uses the latest software and hardware to automate systems, develop the system architecture, and state of the art automation technologies for programming and control.

Many of ARM Group's control systems use human-machine interfaces (HMIs) for visual representation of system status and to display the feedback from any transmitters that may be used. Automated control systems can reduce costs by simplifying information transfers, improving control and reliability, and by allowing for remote system monitoring and adjustments during non-working hours.

## Substation Services

ARM Group's team of experienced engineers can assist you in meeting the demanding challenges associated with grid interconnection and provide the skills needed to successfully complete your project, from system analysis and simulation, to full substation design.

Our team of power system engineers are some of the most experienced in the industry, and are PE-licensed in over 20 states. Whether you plan to supply solar energy to the grid or upgrade an existing substation, we can meet your needs with forward-thinking and cost-competitive solutions.



PRECISE.  
RESPONSIVE.  
SOLUTIONS.

# Electrical Engineering, Automation & Controls

ARM EnerTech Associates, LLC (AETA) offers a wide spectrum of engineering services in the electrical, mechanical, and structural engineering fields. AETA also offers CAD services and an in-house electrical panel design/build facility. Incorporated in 1976, AETA delivers four decades of experience to our clients. Our project experience ranges from power distribution systems, to factory/process automation and energy management. Additionally, we are fast becoming a reliable engineering resource in the transportation industry.

AETA uses the latest office automation tools to turn customer's designs into reality, quickly and efficiently. AETA also makes use of our panel-building facility to thoroughly test each project in-house to ensure that when it's deployed in the field, commissioning time will actually be spent on commissioning efforts, not troubleshooting the design.

## Core Service Areas:

- Electrical Engineering
- Mechanical Engineering
- Construction Engineering
- Process Control
- Panel Building



## Electrical Engineering Services

- Substations
- Emergency Generators
- System Design
- Electric Arc Furnaces
- Static VAR Generators
- Electrical Power Studies
- Protective Relaying
- System Coordination
- Short Circuit Analysis
- Voltage Drop Calculation
- Harmonic Studies
- Load Flow Analysis
- Energy Management
- Arc Flash
- Raceway/Tray Design
- Interconnection Drawings
- Panel Design
- Seismic Calculations
- Bills of Material
- Cycloconverters
- Power System Automation
- Drives (VFD, Servos, DC)
- Crane Control
- Machine Tools



## Mechanical Engineering Services

- 2D CAD Design
- 3D Modeling and Simulation
- Machine Design
- Prototyping
- Finite Element Analysis
- Construction/Installation Design
- Industrial Hydraulic System Design
- Piping Systems and Flow Studies
- Engineering and Feasibility Studies
- Evaluation of Existing Facilities/Processes
- Cost/Benefit Analysis
- Failure Analysis
- Energy/Efficiency Reviews

## Process Control

- Material Handling
- AC - DC Control
- Programmable Logic Controllers (PLCs)
- System Integration
- Data Collection
- Human-Machine Interfaces (HMIs)
- Distributed Process Control
- SCADA Systems
- Automation Systems
- Radio Remote Control
- Alarming Systems
- Piping and Instrumentation
- Crane Control

## Panel Building

AETA designs and builds panels to complement its engineering and system integration, resulting in a quality job for the customer. We are also a UL Listed Panel Shop.



# Power System Repair, Testing & Field Services

Established in 1980, ARM CAMCO LLC (CAMCO), provides electrical field service testing and maintenance, switchgear rebuilds, panel assemblies, and repair of a variety of electrical and electronic devices to heavy industry, manufacturing, utilities, and transportation customers. CAMCO's field services team can meet all your testing and preventative maintenance needs. Whether you need yearly scheduled maintenance for electrical outages, commissioning of new electrical systems, or emergency services, CAMCO has the knowledge and expertise needed to ensure a successful outcome.



**Field Services:**  
 Transformer Testing  
 Cable Testing  
 Relay Calibration  
 Start Up and Testing  
 Thermography  
 Oil Analysis  
 Ground Bed Testing  
 Maintenance of High and Low Voltage Electrical Systems

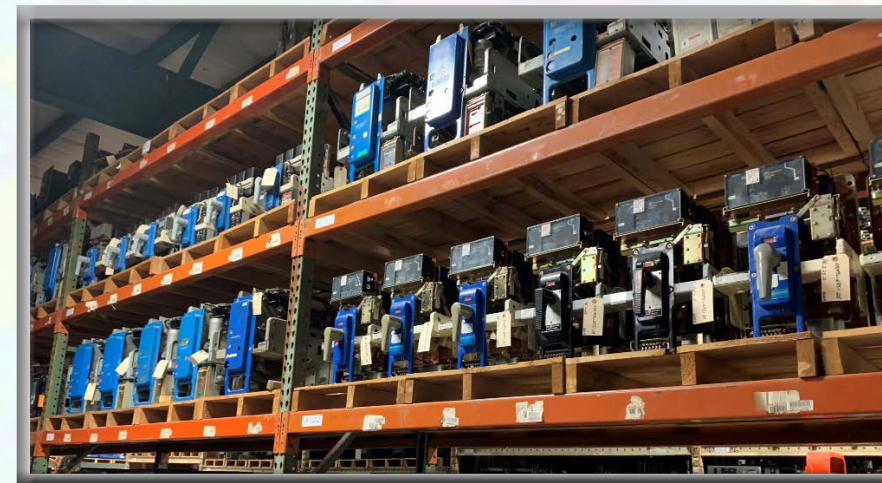
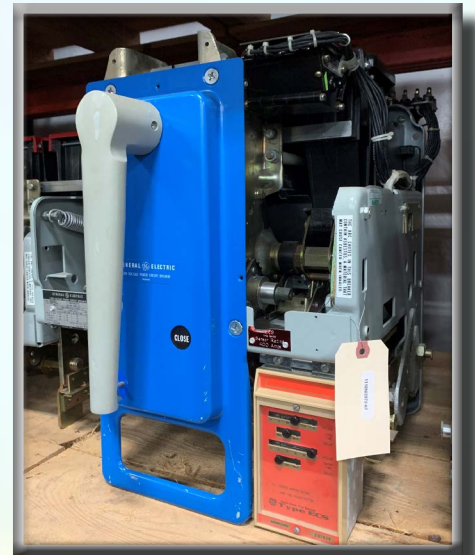


# Electrical Equipment

CAMCO has a large and constantly growing inventory of molded case, air and vacuum circuit breakers, as well as starters and switchgear. We specialize in hard-to-find breakers and parts, and if we do not currently have an item in stock, we will find it for you.



CAMCO is the North American Repair facility and parts supplier for Sécheron breakers and contactors. We have trained technicians with dedicated shop space for Sécheron products. We also perform field services that include commissioning, repair and upgrade of Sécheron products at client sites.



Accredited Company



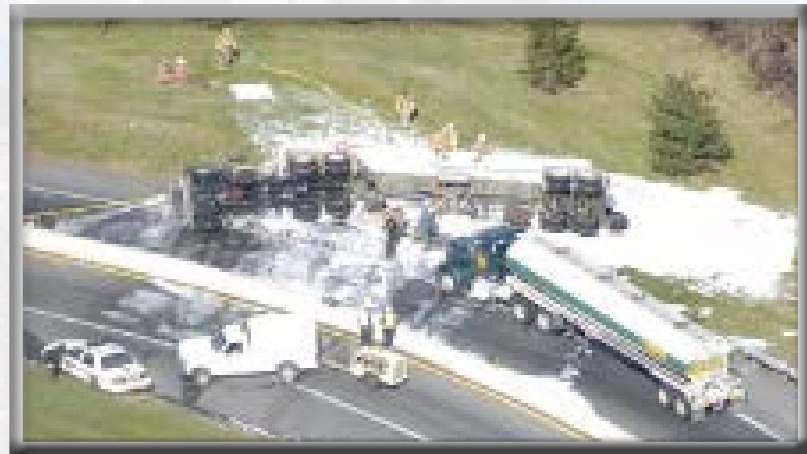
PRECISE.  
 RESPONSIVE.  
 SOLUTIONS.

# Environmental Services

As the scope, magnitude, and complexity of environmental problems evolve, so does the need to develop a more sophisticated approach to manage and implement solutions to mitigate them. Our environmental service capabilities encompass a wide range, from site assessment and environmental compliance through waste management and site remediation.

Return-on-investment is ARM Group's objective as we provide environmental services to our clients. Our role is often proactive, such as an initial planning or design development for an environmental process or facility. Other times, our input relates to mitigating a compliance problem or a contamination condition where a more immediate reactive solution is required. In either case our personnel strive to recommend an approach that will pay for itself, dependent on the client's goals (short- or long-term).

The ARM Group professional staff has extensive experience with a full range of environmental services required by our customer base. From solid and hazardous waste issues to those involving motor fuels, lubricants and other substances, ARM Group personnel are knowledgeable of regulatory requirements and can offer the best approaches. Where remedial measures are necessary, we typically opt for solutions that involve natural or enhanced natural processes: more passive than active, more integrated and compatible with current and expected future land uses, and fundamentally "green" in nature.



# Property Assessment Services

ARM Group provides a variety of inspection, environmental, and engineering services to assist our clients in evaluating the condition of their property and related infrastructure. Whether the concern is the structural integrity of an industrial building, the mechanical condition of the HVAC system, or environmental issues related to building demolition or renovation, the ARM Group team of professionals has the experience and expertise to provide accurate and reliable evaluations and recommendations.

## Services Overview

- Environmental Site Assessments
- Asbestos Surveys and Mitigation Oversight
- Lead Paint Surveys and Mitigation Oversight
- Indoor Air Quality Assessment
- Sick Building Syndrome Evaluations
- Water Quality Analysis
- PCB Surveys
- Worker Exposure Monitoring
- Industrial Hygiene
- Structural Integrity Evaluations
- Storm Water Management Planning and Design
- Replacement Scheduling
- Mechanical System Evaluation
- Electronic Controls and Lighting
- Foundation Stability and Design
- Water and Sewer System Evaluation and Design
- Fire Protection Studies
- Building and Zoning Code Compliance

## Brownfields Site Redevelopment

- Compliance Support - State Brownfields Initiatives
- Environmental Database and GIS Mapping
- Remediation Strategies
- Design of Remedial Measures
- Contaminant Fate and Transport Modeling
- Human Health and Ecological Risk Assessment
- Negotiation of Cleanup Standards

## Property Evaluation

- Abbreviated Inspection
- Transaction Screen Process (ASTM E 1528)
- Environmental Site Assessment (ASTM E 1527 & AAI)
- Preliminary Assessment (CERCLA)
- Preliminary Site Evaluation (Brownfields)

## Merger, Acquisition and Divestiture Support

- Owned or Leased Property Assessments
- Pre-Occupancy Studies
- Site Characterization
- Quantitative Risk Analysis
- Remediation Cost Accounting/Liability Estimates



## Environmental services and compliance support provided by ARM Group include:

- Land Recycling and Reuse
- Strategic Environmental Management or Remediation
- Environmental Assessments
- Property Assessment and Management Consulting
- Building Evaluations
- Agricultural Services
- Facility Compliance Assessments
- Geoprobe® Subsurface Investigations

"The ARM personnel have demonstrated a level of knowledge and commitment to the client that has produced a relationship of respect and trust."  
-J.M., Dart Container Corporation

# Natural Gas Services

The Appalachian region is a world-class player in natural gas generation allowing the United States to lead the world in petroleum and natural gas production and ARM Group has been there from the very beginning, setting the standard for technical excellence, regulatory approval success, and best-in-class customer service. Over the years, ARM Group has developed a deep understanding of the intricacies of public and private exploration and production, midstream, and distribution, while continually creating customized, cost-effective, and timely solutions for our clients.

## Services Overview

- Civil/Environmental Engineering
- Environmental Permitting
- Construction Quality Assurance/Erosion Inspections
- Environmental/Compliance
- Geotechnical Engineering
- GIS Services
- Natural Resources
- Geophysics
- Surveying
- Waste Management
- Water Resources
- Air Quality
- AST Services
- ESG Support

## Environmental Permitting Services

- Erosion and Sediment Control General Permit (ESCGP-3, HWSC and WV Site Registration)
- Encroachment Permitting (General, Nationwide, and Joint Permits)
- Highway Occupancy Permits (Driveway & Utility)
- Submerged Lands License Agreements, Stream Activity, and Floodplain Permits
- SRBC Permitting
- Residual Waste Permits (WMGR123)
- Air Permitting for Compressor Stations and Processing Facilities
- Well Permitting
- Water Management Plans (WMP)
- Water Supply and Consumptive Use Permitting
- Waste Disposal Permitting (Residual Waste-Drill Cuttings and Wastewater)
- Underground Injection Control Permitting
- Dam Permitting
- Compliance Reporting
- Notice of Terminations (NOT)
- Asset Closure
- SPCC, PPC, and SPR Plans
- WV AST Fit for Service Inspection



## Engineering Services

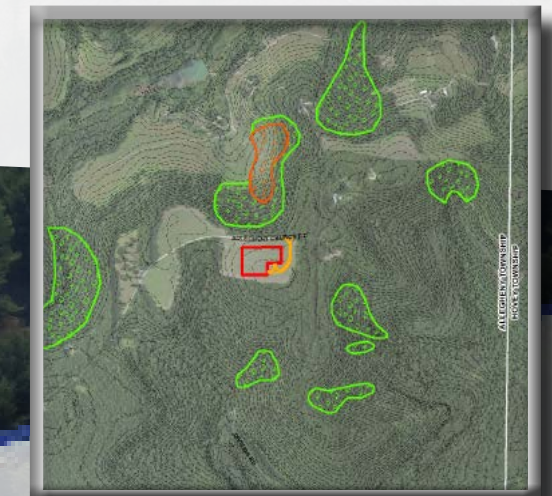
- Well Pad Design
- Horizontal Directional Drilling
- Impoundment Systems
- Value Engineering
- Road, Stream, and Wetland Crossings
- Water Intake Design
- Waterline and Pump Station Design
- Erosion and Sedimentation Control (ESC) Planning, Permitting, and Design
- Post-Construction Stormwater Management (PCSM)/Site Restoration Plans
- Electrical Engineering, Power and Automation
- Due Diligence Assessments

## Horizontal Directional Drilling Services:

- HDD Design
- HDD Alternative Analysis
- Permitting (Chapter 105 & 102)
- Pre-Drill Baseline Sampling and Notifications
- HDD Plan Development (Contingency, Mitigation, Response Plans)
- Risk Analysis
- Inadvertent Return Contingency Plan
- Karst Area Reviews
- HDD Installation Oversight and Documentation

## Pipeline Geohazard Services:

- Desktop Analysis
- Field Inspection and Data Collection
- Avoidance and Mitigation Recommendations
- Mitigation Implementation and Monitoring
- New and Rehabilitation Permitting
- Hydrology and Hydraulic Modeling
- Construction Administration and Quality Assurance
- Laboratory Analysis
- Geotechnical Engineering
- Engineering Design
- Emergency Action Plans
- Seepage Studies
- Embankment Reinforcement
- Temporary Shoring/Excavation Support



"Ability to help coordinate/manage projects from grass roots concepts through permitting and operations. Wealth of knowledge to support small businesses without the in-house expertise needed to cover all facets of engineering/regulatory requirements in the oil and gas industry."

-Ian; Infinity Natural Resources

# Geotechnical Engineering

Technical competence, engineering experience and judgment, and an appreciation for cost and risk concerns are the essential elements of ARM Group's successful geotechnical engineering practice. ARM Group's engineering staff has both the technical know-how and the practical experience to provide our clients with cost-effective solutions to their geotechnical engineering challenges.

## Our Areas of Expertise Include:

- Shallow foundation systems
- Deep foundation design
- Karst conditions and sinkhole mitigation and remediation
- Ground improvement measures and grouting
- Horizontal directional drilling design review
- Settlement analysis
- Pavement analysis, design, and condition surveys
- Slope stability analysis and rehabilitation
- Geosynthetics design services
- Retaining wall analysis and design, including segmental and grid-reinforced or MSE walls
- Analysis and design of excavation support systems, including temporary bracing & shoring
- Evaluation and specification of tunneling systems
- Evaluation and mitigation of mine subsidence
- Forensic failure analyses and reviews
- Post-tensioned anchors
- Structural underpinning measures
- Mining
- Laboratory materials testing services



## Foundation Design Philosophy

ARM Group works with clients and other design team members to identify foundation options, and to identify the cost and risk issues associated with each. Project stakeholders have become increasingly willing in recent years to consider foundation systems that may once have been considered inadvisable due to perceived risk. This is particularly true in limestone areas, where costly deep foundation systems were routinely recommended in the past for many large structures, both as a matter of conventional practice and due to concern over the potential for sinkhole-related problems. Similar concerns exist at sites where historic fill materials are encountered.

Subsurface conditions vary significantly from site to site. However, evaluating the severity of past or ongoing solution activity within site bedrock, and the extent of associated soil disturbance, is an important aspect of each project. The character and stability of existing historic fill also depends upon several factors, such as its composition, age, and depth. ARM Group evaluates these conditions and the risks associated with shallow foundations at each site, and works with the project team to identify the most suitable foundation system.

ARM Group has worked with many clients and designers to explain the risks associated with relying upon shallow foundations at karst sites, and to describe the measures that can be incorporated into project design and construction to minimize the potential for karst-related problems over the life of the proposed facilities. This project approach ensures that project stakeholders are making the most informed decisions possible.

## Karst Experience

ARM Group has considerable experience and expertise in the evaluation and mitigation of the karst-related problems that impact many sites in Pennsylvania, as well as portions of Maryland and surrounding states. ARM Group routinely assesses subsurface conditions at sites underlain by limestone with regard to the extent of past or ongoing soil transport and associated sinkhole activity.

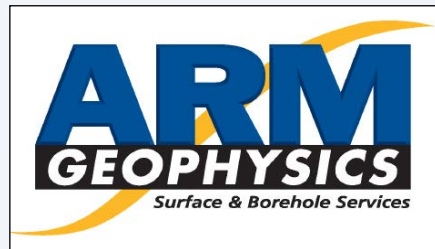
ARM Group personnel have investigated and repaired hundreds of sinkholes, ranging in size from shallow sinkholes only several feet in diameter to sinkholes more than 100 feet in diameter and 30 feet deep. A wide variety of sinkhole repair methods and materials are currently available, and the measures recommended by ARM Group reflect our consideration of site-specific soil and rock conditions, the likely cause of the sinkhole, and the proximity of the sinkhole to critical structures or utilities.



## ARM Group offers Laboratory Material Testing Services

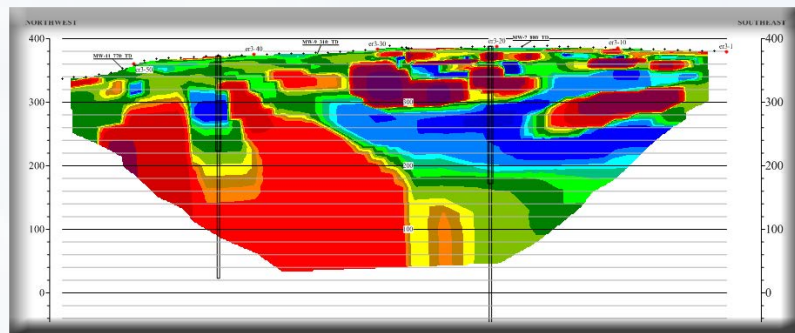
ARM Group has the Northeastern PA region's only AMRL Certified Laboratory (Certification No. 2202). This certification ensures that all testing is performed at the highest industry standards. The laboratory is equipped with the current and state-of-the-art testing equipment to provide testing, analysis, and reporting for: Soils Analysis, Aggregates Testing, Concrete Testing, and Pavement Analysis/Design.

# Geophysical Services



Engineering and environmental projects benefit from the many uses of non-invasive geophysical surveys. ARM Geophysics provides a full range of surface and borehole geophysics. ARM personnel have significant experience performing geophysical surveys for a wide variety of investigations across the United States and internationally. These sites have been situated in varying terrains having many different types of surface and subsurface conditions, and our geophysicists apply their geological and geotechnical

knowledge to provide the most cost-effective surveys and data collection. Geophysical surveys help reduce costs by minimizing the need for invasive subsurface investigations, providing efficient, data-driven insights for project planning.



**ARM Geophysics solves complex problems and challenges by integrating expertise from:**

- Geophysics
- Geology
- Hydrogeology
- Soil Science
- Geotechnical/Civil Engineering

**Our seamless integration of these disciplines results in an unmatched level of service for our clients.**



The **Surface Geophysics Group** performs investigations for a variety of markets including Environmental, Natural Gas, Quarry & Mining, Geotechnical, Geothermal, Groundwater Resource, and Utility Mapping. ARM Group personnel have the capabilities and experience to perform Seismic, GPR, Electrical Resistivity, Gravity, Magnetic and Electromagnetic Surveys. This wide range of capabilities allows ARM geophysicists to select and perform the best and most appropriate survey for your site.

Our **Borehole Geophysical Group** provides state of the art down-hole logging capabilities including a full suite of standard logging tools and Optical and Acoustic Televiwers, Neutron, Density, Natural Gamma and Heat Pulse Flowmeters. ARM Group's logging trucks can log to a depth of 1,500 meters and our portable system can be deployed inside buildings and in remote locations.

ARM Geophysics is also experienced in leak location for impoundments and ponds. We identify the location of a leak, the impacts of a leak, and provide leak mitigation services. For each project, we apply sound principles of electrically-based geophysics and can easily identify small leaks and offer a suite of methods and tools to solve the leak quickly and cost efficiently.

**ARM Group's in-house equipment includes the following:**

## Borehole Logging Equipment

- Truck-mounted Logging Acquisition Systems
- Portable Logging Acquisition Systems
- Optical Televiwers
- Acoustic Televiwers
- Fluid Temperature Probes
- Fluid Conductivity Probes
- Formation Resistivity Probes
- Caliper Probes
- Heat Pulse Flow Meter Probes
- Density Probe
- Neutron Probe

## Surface Geophysics Equipment

- Seismic Acquisition System
- Land Streamer Seismic Geophone System
- Various Seismic Sources
- Electrical Resistivity Acquisition System
- Electrical Resistivity Cables
- GPS Systems
- EM-61
- EM-31
- Very Low Frequency (VLF) Meter
- Hand-held Metal Detector
- Hand-held Data Loggers
- GPR Acquisition System with Various Antennae
- Utility Locating System



# Water Resources

Water is a critical element for municipalities, industries, and for the development of unconventional shale gas due to the large volumes of water needed to hydraulically fracture wells. ARM Group's hydrogeologists have been identifying, evaluating, and developing surface and groundwater supplies for over 25 years. We have an intimate understanding of the geology and hydrology that directly influence the storage and movement of water, and we have developed relationships with the local watershed protection groups, county conservation districts, river basin commissions, as well as state and federal regulatory agencies that oversee the use of our water resources. ARM Group's scientists and engineers commonly provide the following services to assist in the development of public, private, and natural gas-related water supplies.

- Permitting of Surface Water and Groundwater Withdrawals and Consumptive Uses
- Stream Intake, Pumping Station and Pipeline Design and Permitting
- Impoundment Design and Permitting
- Stream Gauging and Monitoring, Including Remote Telemetry
- Hydrologic Evaluations and Passby Flow Determinations
- Geophysical Evaluations
- Environmental Monitoring and Permitting, Including Wetlands Evaluation and Mapping
- Water Supply Well Siting, Construction, Testing, and Permitting
- Aquifer Testing Including Constant-Rate Aquifer Testing and Evaluation
- Wellfield Monitoring, Management, and Rehabilitation
- Development of Metering Plans and Reporting Forms
- Water Availability Evaluations



## Water Resource Services Provided by ARM Group Include:

Water Resource and Civil Engineering  
 Surface Water Intake Design  
 Groundwater Development  
 Hydrologic Studies  
 Water Quality Monitoring

Geophysical Well Site Evaluations  
 Stream Restoration and Mitigation  
 Water Supply Pipeline Permitting  
 Impoundment Design and Permitting  
 Spring & Bottled Water Sourcing

# Stormwater Management Services

## Planning and Permitting

- Storm Water Management Planning
- Storm Water Pollution Prevention Plans (SWPPP)
- Erosion and Sedimentation Control Plans

## Stormwater Management

- Stormwater System Design
- Pond and Impoundment Design
- Best Management Practices (BMP) Implementation
- Low Impact Design (LID)
- Open Channel and Culvert Analysis
- Erosion and Sediment Control Devices
- Operational and Maintenance Manuals
- Infiltration Optimization
- Stormwater Injection

## Regulatory Compliance with:

- Clean Water Act
- Section 401, State's Authority
- Section 404, Corps of Engineers
- National Pollution Discharge Elimination System (NPDES)
- Nonpoint Source (NPS) Pollution
- NPDES Phase II and Municipal Separate Storm Sewer Systems (MS4)
- FEMA National Flood Insurance Compliance

## Watershed Management

- Watershed Analysis
- Flood Hazard Studies
- FEMA CLOMR/LOMR Documentation

## Stream Restoration and Mitigation

- Stream Restoration and Realignment
- Natural Channel Design
- Stream Geomorphology Assessments
- Bioengineering and Stabilization
- Wetland Creation, Enhancement, and Restoration
- Mitigation and Monitoring Plans
- HEC-RAS and Sediment Transport Modeling

## Water Quality

- Stormwater Monitoring
- Water Quality Monitoring Plans
- Water Quality Modeling
- Erosion Control Inspections
- Illicit Discharge Detection and Elimination
- Total Maximum Daily Loads (TMDL)

"...Their responsiveness and commitment to PASD's technical needs has been above and beyond my expectations. I would highly recommend ARM for any projects that require Hydrogeological analysis & support."  
 – Project Manager; PASD

# Natural Resource Services

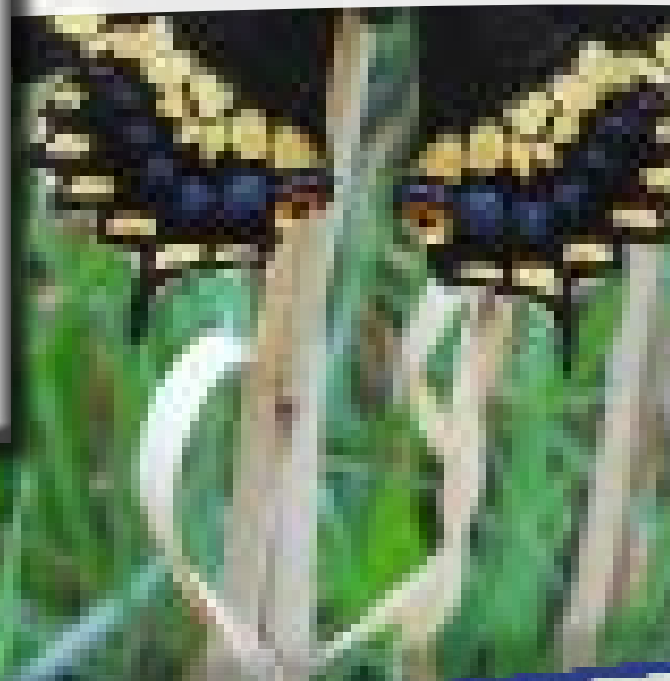
ARM Group's Natural Resources team is comprised of certified/professional wetland scientists, certified wildlife biologists, qualified botanists, aquatic ecologists, and ornithologists. Our scientists are highly qualified to assess baseline and impact conditions, meet regulatory compliance needs, and develop conservation solutions for terrestrial and aquatic systems. We are part of a multidisciplinary team of engineers, geologists, hydrogeologists, and geophysicists, providing turnkey services in all aspects of the project from inception through the design, impact analysis permitting, mitigation, and compliance monitoring phases. Our scientists are known to solve complex project issues. We take a proactive team approach in working with clients to develop solutions that successfully advance a project leading to timely approvals and authorizations, as well as meeting project schedules. Our scientists are safety-trained, dependable, responsive, and committed to our clients to provide quality products/services.

## Wetlands

- Delineation
- Functional Assessments
- Mitigation Design
- Monitoring
- Construction Oversight
- Jurisdictional Determination

## Surface Water and Aquatic Resources

- Benthic Macroinvertebrate Identification, Analysis, and Surveys
- Riparian Habitat Assessment
- Surface Water/Water Quality Assessments, including Base-Line Water Sampling
- Biosecurity Plans
- Watershed Assessment



## Reporting, Permitting, and Compliance

- Federal (section 404, 401, 10) and State Permits
- Pre-application Meetings and Agency Coordination
- Impact Determination/Complex Permitting
- Avoidance and Minimization Strategies/Alternative Analysis
- NEPA Documentation
- Permit Compliance Track and Monitoring
- Desktop/Due Diligence
- Agency Coordination
- Expert Witness

## Vegetation and Wildlife

- Threatened and Endangered Species Surveys
- Botanical Survey
- Invasive Species Monitoring & Control
- Bog Turtle Assessment & Survey
- Timber Rattlesnake Monitoring
- Allegheny Woodrat Habitat Assessment & Survey
- Bird & Raptor Surveys
- Wildlife and Habitat Plans
- Vegetation Assessment and Land Cover Type Mapping
- Forestry Services

"I have been working with the ARM Group for approximately 10 years on various natural gas projects and the quality of this organization continues to exceed expectations of any consulting company. The Natural Resources group at ARM is very knowledgeable. You can always be confident in their delineations and findings. You can completely trust the entire team to professionally put together the best product. I have previously referred to them as the "gold standard" and I continue to see them that way."

- Stephanie Ranker - Environmental Specialist, ORSH Permitting

# Construction Phase Services

ARM Group has been performing a wide range of construction phase services since inception. ARM Group has over 140 engineers, geologists, and field technicians to observe and advise critical elements of construction. Our field personnel help ensure compliance with project specifications; provide guidance and assistance to contractors; keep owners informed of job progress; propose cost and time saving measures when appropriate; and anticipate potential problems and offer solutions.



We recognize each project is unique and our construction phase services are tailored to meet each project's specific needs.

## Construction Phase Services

ARM Group's hands-on construction phase team of professionals provide daily oversight, testing, documentation, and reporting of construction activity to ensure each site is constructed safely, efficiently, and according to design, and within regulation. ARM Group's construction phase staff has extensive knowledge and experience in the installation, monitoring, inspection, and certification of:

- Well Pads
- Pipelines
- Compressor Pads
- Tank Pads
- Metering Pads
- Landfills
- Freshwater, Wastewater, and Centralized Impoundments
- Overland Pipelines
- Aboveground Storage Tanks (ASTs)
- Freshwater Intakes
- Solar Projects
- Wind Energy Projects
- LFGTE Projects
- Redevelopment Projects
- Commercial Development Projects

ARM Group's documentation and reporting protocols have received high praise from regulatory and municipal authorities of the public sector, as well as clients, contractors, and laboratories from the private sector. At ARM Group, we strive to provide clients with experienced boots on the ground and first-class construction documentation so that they can have peace of mind to know their project is being built properly without having to be onsite regularly.

## Additional Construction Phase Services Include:

- Earthwork Monitoring & Compaction Control Testing (Soils, Aggregates, and Asphalt)
- Subgrade Inspection and Preparation
- Concrete Testing
- Inspection of Micropile, Driven Pile, and Drilled Caisson Installation and Testing
- Oversight of Sinkhole Repair
- Wetland Surveys, Creation, Enhancement and Restoration
- Installation, Monitoring and Interpretation of Geotechnical Instrumentation (e.g. slope monitoring)
- Oversight and Monitoring of Ground Improvement Measures
- Inspection of MSE Berm Installation
- Transfer Stations
- Organic Recycling Facilities
- Highway/Road (HOP)
- Topographic Surveys
- Nuclear Moisture Density Testing
- High Accuracy Control Surveys
- Horizontal and Vertical Monumentation
- Construction Stake-Out
- Utility Location and As-Built Surveys
- AST Dye Testing and Integrity Inspections

ARM Group's field representatives are accustomed to the pressures of ensuring design performance and regulatory compliance while balancing the need to facilitate project progress. ARM Group's construction phase teams consistently prove their value in the field by working with contractor personnel and informing clients of progress, expected design adjustments, anticipated issues, and resolutions.

ARM Group's Geotechnical & Construction Testing group also can provide various material testing services, and other services including:

- Construction Quality Assurance/Quality Control Testing and Inspection
- Specialized Foundations
- Ground Improvement Technologies
- Materials Engineering



"When constructing a project designed by ARM you always know you are getting a thorough set of drawings and specifications that has taken into consideration the challenges of the job and incorporates current technology, construction techniques and products."  
 — Ryan; President, Chesapeake Containment Systems, Inc.

# Mine & Quarry Services

ARM Group has extensive experience and the appropriate technical capabilities to assist the mineral quarry and mining industries. We offer a broad range of services ranging from the preparation of mine/quarry permits to evaluating potential impacts from mining associated with groundwater withdrawals and karst geology.

## Mine & Quarry Permitting Experience & Capabilities:

- Small & Large Non-Coal Industrial Minerals Permits, General Mining Permits (PA DEP GP-103 & GP-105)
- NPDES Discharge Permitting - Individual and General Permits (GP-104), Anti-degradation and Water Quality Assessments
- Mine Reclamation Fill (Clean Fill) Permitting
- Water Withdrawal and Consumptive Use Permitting - Susquehanna and Delaware River Basin Commissions
- Air Quality Permitting (Title V and Air Plan Approval Permit Applications, RFDs, GHG Reporting, NSPS Reports, Title V Compliance Certifications, and General Operating Permit (GP-3, GP-9 & GP-11) Applications)
- Waterway Encroachment - PADEP Chapter-105, GP-4, GP-5, GP-8 and U.S. Army Corps of Engineers Joint Permitting
- PennDOT Highway Occupancy Permitting
- Residual Waste and Municipal Waste General Permits
- Land Development Planning and Approvals
- Design Services



## Mine & Quarry Investigation, Design, and Monitoring Capabilities:

- Exploration - Drilling, Geologic Assessments, & Materials Testing
- Mineral Reserve Estimates and Characterization
- Overburden Sampling and Characterization
- Water Pipeline and Pump System Design
- Geophysical Investigations - Surface and Downhole Evaluations
- Hydrogeologic Studies:
  - ◆ Groundwater Investigations
  - ◆ Quarry Dewatering Assessments
  - ◆ Zone of Influence Evaluations
  - ◆ Surface Water, Groundwater, and Discharge Monitoring
- Assessment of Potential Impacts - Surface and Groundwater Resources
- Baseline Sampling and Establishment of Background Conditions
- Environmental Impact Statements, Wetland Delineations/Mitigation and Habitat/Endangered Species Surveys
- Karst Hazard Assessments and Sinkhole Remediation
- Reclamation/Redevelopment Planning
- Civil/Geotechnical Engineering
- GIS Mapping and AutoCAD Services
- Electrical Engineering - Remote Telemetry and SCADA Design & Install
- AMD Mitigation Plans and Assessment of Legacy Mining Impacts
- Mine Subsidence Evaluations
- Mine Subsidence Mitigation



# Natural System Design

ARM Group's Natural System Design (NSD) specializes in sustainable technology and science-based solutions for planning, design, and restoration of water resources and related aquatic habitats. ARM Group's NSD services assist clients on water resource projects ranging from watershed planning to site-specific water remediation design and permitting/compliance. By integrating natural design principles with accepted environmental engineering practices, our designs often prove to be the most cost-effective solution and offer new opportunities and greater benefits to better manage and improve water resources to achieve the project objectives. ARM Group's approach includes being proactive with regulatory issues to avoid permitting delays, especially for projects located in sensitive environments and those requiring multiple resource agency approvals. This consideration of the regulatory process at the conceptual phase of the project helps our clients make informed decisions early to avoid unnecessary delays and costs.

Our multi-disciplinary NSD team has over 100 years of collective experience to address the needs associated with stormwater runoff, water quality, infrastructure design, hydrology assessment and modeling, acid rain, treatment of waste water, sedimentation, habitat loss/ecosystem degradation, permit compliance, and monitoring. ARM Group NSD team's expertise focuses upon the services listed below.

- Mitigating Stormwater Impacts
- Stabilizing and Restoring Stream Systems and Habitats
- Mitigating Wetland and Aquatic Habitat Loss
- Monitoring Ecological Changes and Trends
- Designing Wetlands for Water Treatment
- Environmental Construction Monitoring



Investment in NSD projects can provide the following supporting benefits:

- Cost Savings and Less Maintenance
- Land Preservation
- Water Quality Improvements/Removing Pollutants
- Stormwater Management & Land and Infrastructure Protection
- Improved Species Diversity and Habitat Value/Landscape Connectivity, Wetland Restoration & Banking, Riparian Buffer Enhancement
- Resilient Habitats
- Increased Educational and Recreational Opportunities
- Regulatory Compliance



Based on its expertise and experience in Natural Systems Design, the ARM Group was selected to prepare a conceptual design plan to stabilize the stream channel and incorporate educational opportunities as part of our overall goals. The ARM specialists were most responsive, highly professional and provided a creative, timely, and cost effective plan for us to pursue design and construction funding. We look forward to continuing to work with ARM on this and future projects."  
- Robert Maiden, Managing Director, Working Lands Investment Partners

# UST & AST Consulting Services

*Underground Storage Tanks & Above Ground Storage Tanks*

ARM Group offers various inspection and compliance services for sites with storage tanks containing regulated fluids. ARM Group's professionals have the experience and technical expertise to address environmental and engineering challenges related to underground storage tanks (USTs) and above ground storage tanks (ASTs). Our main goal is to reduce your potential environmental liabilities and ensure long-term performance with minimal expense.

## Teaming with Tank Owners and Contractors

ARM Group maintains numerous successful working relationships with tank owners, suppliers, and various installation and repair contractors. Because we understand the nuances of tank construction and operation, we can effectively provide guidance and technical solutions to achieve project and client objectives, with sensitivity to schedules and budgets.

## Spill or Leak Response

Whether utilizing risk assessment, fate and transport modeling, ecological screening, or simply our regulatory expertise, ARM Group will determine the most cost-effective means of reaching regulatory-approved goal attainment for your facility. We have successfully employed pathway elimination strategies to avoid or reduce remediation of soils and groundwater when spills or leaks have occurred.

## ARM Group expertise that can work for you:

- Rapid response, objective-based soil sampling, on-site documentation, and tank closure reports for tank removals and closures.
- State-of-the-art site characterization plans and techniques to maximize data collection and expedite remediation.
- Construction quality assurance inspections and dye testing.
- Representation for negotiations with regulatory agencies (e.g. UST conditions, waste handling, site characterization and monitoring requirements, permitting, etc.).
- UST Indemnification Fund (USTIF) consulting and administrative support in Pennsylvania and other states. ARM Group has a successful working relationship with USTIF staff to ensure that clients get the most from this fund.
- Interim remedial action, when needed, including plans, permitting, and oversight. This may be necessary while further investigations, approvals, or reimbursement applications are being processed.
- Innovative remediation approaches, including in-situ enhanced bioremediation and risk-based methods for soil and groundwater. ARM Group is the only company in Pennsylvania with a mobile BioBox for enhanced bioremediation.

# Geographic Information System Services

ARM Group provides Geographic Information System (GIS) services to support the data management and environmental compliance needs of our client. A brief summary of our GIS services include the following, which can be customized to fit your unique needs:

## GPS Data Management

- Intuitive and complete data dictionaries increase data collection speed and organization
- Post processing procedures use real-time data sources to produce centimeter accuracy

## Data Management and Creation

- Digitizing Features (creating vector data from aerial imagery)
- Cleaning Data and Topology Management
- Geocoding Addresses
- Georeferencing
- Network Analysis and Creation
- Web-based Access and Hosting

## Mapping

- Site Location Maps
- Environmental Monitoring and Constraint Maps
- Natural Resource Management
- Existing and Proposed Feature Analyses and Maps
- Facility Siting
- Land Use Planning

## Interactive Mapping

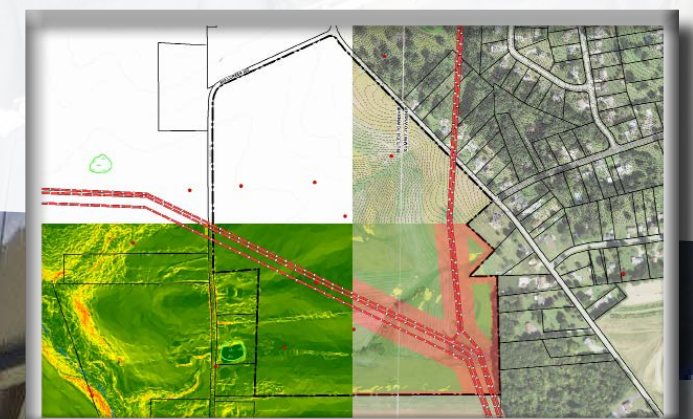
- In-house Maps
- Client Maps
- Map features linked to tabular attribute data, documents and reports, photos, videos, additional mapping and more
- Maps used to visualize diverse data for specific areas

## 3D Mapping and Analysis

- Viewshed and Line of Sight Maps
- Watershed and Drainage Basin Analyses and Maps
- LiDAR Hillshade Maps

## 3D Videos and Imagery

- Analyze features with a real world perspective
- Visualize slope and elevation change
- Present existing or proposed sites/systems



PRECISE.  
RESPONSIVE.  
SOLUTIONS.

# Wind & Geothermal Energy Services

Wind and geothermal energy provide us with the ability to directly harness the naturally generated energy of the earth, thus reducing greenhouse gas emissions and lower costs. From small wind turbines for on-site electrical supply to large-scale wind farms for utility electrical production, ARM Group has the experience and resources to successfully convert wind energy into ROI. For geothermal energy, ARM Group's geologists and engineers are unmatched when it comes to the efficient design and optimization of geothermal heating/cooling systems of any size.



## Wind Energy Engineering & Consulting Services

- Economic and Financial Analysis
- Meteorological Tower Installation
- Wind Speed Data Collection and Analysis
- Land Development Planning, Zoning Approval, Permitting
- Civil Infrastructure Engineering
- Electrical Infrastructure and Substation Design Engineering
- GIS Mapping and Visual Impact Studies
- Wind Turbine Selection and Siting Analysis
- Environmental Impact Assessments including:
  - ◆ Erosions and Sediment Control Planning
  - ◆ Ecological Impact Studies
  - ◆ Avian Impact Studies
  - ◆ Noise Assessments
- Geotechnical Investigations and Foundation Design Engineering
- Electrical Interconnection Studies
- Renewable Energy Credit (REC) Contracts
- Power Purchase Agreements
- Construction Quality Assurance Services



## Ground Source Geothermal System Services

- Geologic Evaluation of Site Specific Conditions
- Thermal Conductivity Testing
- Well Field Siting, Planning and Design Optimization
- Permitting
- Construction Oversight

## Geologic Evaluation of Site Specific Conditions

ARM Group reviews the local geology, aquifer characteristics, and existing wells in the area and correlate the data with drilling results from a deep test well at the site. A thermal conductivity test is performed thereafter to determine the average formation thermal conductivity and the average thermal diffusivity of the undisturbed soil.

## Well Field Siting and Planning

Test wells are drilled in the proposed area for the selected geothermal system. The purpose of test wells is to determine the site-specific subsurface geology and thermal conductivity characteristics for the design of the geothermal well field. The geothermal well field should be situated at a location that will allow sufficient thermal gradient characteristics, suitable location and well depth, while minimizing drilling and completion costs. ARM will evaluate local zoning ordinances, building codes, and other regulatory permitting requirements and complete the steps necessary to successfully permit the project. ARM Group can provide complete oversight of the test well drilling operations and use the information gathered to determine the optimal design of the well field, well location, and well depths.



PRECISE.  
RESPONSIVE.  
SOLUTIONS.

# Why We Are Different

## Local Knowledge

Our intimate knowledge of the regulatory framework and relationships with key decision makers in the Mid-Atlantic region helps ensure faster approvals and swifter project completion.

## Responsive

We recognize that we operate in a 24/7 digital world, and we do our best to ensure that our customers can access us to get the precise information they need when they need it.

## Safety Mentality

Exemplary safety records are the product of our safety culture. When you hire ARM Group, you can be assured that we adhere to the highest safety standards.

## Constructability

ARM Group applies its extensive multi-disciplinary design and construction experience to ensure that the project we design for you is constructible, uses state-of-the-art materials and construction techniques, and provides you with maximum cost savings without compromising quality.

## Reputation

ARM Group has been providing sound science & engineering services in support of geo-environmental, civil, electrical, and automation projects for more than two decades so you can be confident that ARM Group will be there to ensure the long-term success of your project. Experience the fulfillment and satisfaction of working with a team of passionate, caring engineers and scientists who are 100% committed to the success of you and your project.

## OUR COMMITMENT TO A BETTER WORLD

One way that ARM Group defines success is by how we are able to positively impact the communities in which we live and work. Accordingly, ARM Group is very fortunate and proud to be able to contribute a portion of our proceeds each year to many different charitable organizations and activities that have a personal connection to our team, including the following:

- Make-A-Wish
- United Way
- Coaches vs. Cancer of Penn State
- The Vista Foundation (benefiting children with autism)
- The Muscular Dystrophy Association
- United Cerebral Palsy of Central PA
- The Watson Institute (special needs school)
- Bob Perks
- The Humane Society
- The Hershey Recreation Center
- PA Caring for K-9s (dog rescue shelter)
- The Children's Miracle Network
- Hershey Food Bank
- Hershey High School Swimming
- Nittany Lion Aquatic Club
- Ruffed Grouse Society
- The Bestwick Foundation (benefiting families fighting cancer)
- Trisomy 18 Foundation
- Many other local charities and sports teams

## Our Team



**Bryan Wehler, P.E., P.G.**  
President  
Chief Executive Officer  
ARM Group Enterprises Inc.



**Scott Wendling, P.G.**  
Vice President - Geophysics  
Chief Operating Officer  
ARM Group Enterprises Inc.



**Matthew Grams**  
Chief Financial Officer  
ARM Group Enterprises Inc.



**Jason Rogers, SHRM-SCP**  
Vice President, Human Resources  
ARM Group Enterprises Inc.



**Stephen Diamond**  
President  
ARM EnerTech Associates LLC



**Daniel Fellon, P.E.**  
President  
ARM Group LLC



**John Hatfield**  
President  
ARM CAMCO LLC



# ARM Group Recognition

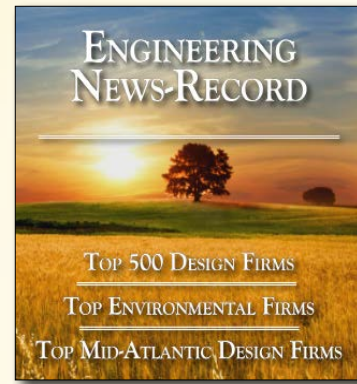


PSMJ Resources, Inc.  
Premier Award for Client Satisfaction (2020)

Engineering News-Record  
ENR Top 500 Design Firm in the US (2018, 2020 - 2024)

ENR Top 200 Environmental Firm in the US (2018 - 2024)

ENR Mid-Atlantic  
Top Design Firms (2018, 2020 - 2024)



Top 50 Fastest Growing Companies (2012/2021/2024)  
Top Engineering Firms (2020)  
Top Energy Consultant (2020/2023)  
#2 Fastest Growing Company in Dauphin County (2019)  
Top 250 Private Companies (2018/2020/2023)

**Best Places to Work in PA**  
2012, 2016, 2020, 2024

### Phoenix Award

Lancaster Northwest Gateway Project – Armstrong Phase:  
ARM Group received the Phoenix Award for excellence in brownfield redevelopment.



**Excellence Award Winner:**  
Landfill Management  
**SWANA.org**

### SWANA

Three-time winner of the Solid Waste Association of North America's (SWANA) Excellence Award

# What Do Our Clients Say?

“ARM provides excellent service and knowledge and quick with their response to questions.”

-Tom F; Carmeuse

“ARM has met and exceeded our needs. ARM's services are invaluable to us. They listen to our needs and respond with exactly what we need and then some.”

-Doreen H; PADEP

“ARM took over from an incumbent company that had been in place for a number of years. The transition went better than I was expecting, and we've gotten positive feedback on ARM's performance from other internal stakeholders.”

-Natural Gas Client

“ARM has also been responsive to proposal requests and meeting project schedules. Majority of projects have been with USACE and quality deliverables have been provided for completed analyses. Will continue going to ARM for future needs.”

-Stantec Employee

“Dependable, quality-oriented consultant.”

-Solid Waste Industry Environmental Expert

# Locations

## **ARME Corporate Headquarters**

1129 West Governor Road  
Hershey, PA 17033  
Phone: 717-533-8600

## **ARM GROUP LLC**

---

### **Ashland, Virginia**

9560 Kings Charter Drive  
Ashland, VA 23005  
Phone: 804-550-9200

### **Columbia, Maryland**

9175 Guilford Road, Suite 310  
Columbia, MD 21046  
Phone: 410-290-7775

### **Hershey, Pennsylvania**

1129 West Governor Road  
Hershey, PA 17033  
Phone: 717-533-8600

### **Jessup, Pennsylvania**

1252 Mid Valley Drive  
Jessup, PA 18434  
Phone: 570-489-8717

### **Lehigh Valley, Pennsylvania**

3101 Emrick Boulevard, Suite 201  
Bethlehem, PA 18020  
Phone: 610-248-7625

### **Marlton, New Jersey**

11 Eves Drive  
Marlton, NJ 08053  
Phone: 717-250-5581

### **Mechanicsburg, Pennsylvania**

4600 Lena Drive, Suite 201  
Mechanicsburg, PA 17055  
Phone: 717-508-0589

### **Pittsburgh, Pennsylvania**

171 Hillpointe Drive, Suite 302  
Canonsburg, PA 15317  
Phone: 724-743-5793

### **State College, Pennsylvania**

2548 Park Center Boulevard  
State College, PA 16801  
Phone: 814-272-0455

### **West Chester, Pennsylvania**

515 South Franklin Street  
West Chester, PA 19382  
Phone: 610-692-5770

## **ARM ENERTECH ASSOCIATES, LLC**

---

### **Cary, North Carolina**

401 Harrison Oaks Boulevard,  
Suite 250  
Cary, NC 27513  
Phone: 717-657-9017

### **Johnstown, Pennsylvania**

311 Warren Street  
Johnstown, PA 15905  
Phone: 717-657-9017

### **Pittsburgh, Pennsylvania**

606 Liberty Avenue, Suite 206  
Pittsburgh, PA 15222  
Phone: 717-657-9017

### **Manalapan, New Jersey**

77 Pension Road, Unit 7  
Manalapan, NJ 07726  
Phone: 732-614-2410

### **Mechanicsburg, Pennsylvania**

4700 Westport Drive, Suite 1000  
Mechanicsburg, PA 17055  
Phone: 717-657-9017

## **ARM CAMCO LLC**

---

### **Ebensburg, Pennsylvania**

667 Industrial Park Road  
Ebensburg, PA 15931  
Phone: 814-472-7980

### **Scott Depot, West Virginia**

149 Hamon Drive  
Scott Depot, WV 25560  
Phone: 814-525-1139

*Applying Science & Engineering  
to Leave the World Better Than  
We Found It*



**ARM Group Enterprises**

ARM GROUP LLC | ARM ENERTECH ASSOCIATES, LLC | ARM CAMCO LLC