

# NER-001

## Zero Emission Unit

The NER is a portable zero emission unit to reduce diesel smoke emissions in the garage environment. Because of the smart design, the NER can be used for passenger and commercial (HTV) vehicles. The NER is used in combination with the INNOVA/LPA emission combi testers and secures a quick, accurate and safe smoke test.

Because of new health regulations, more and more diesel smoke emissions must be reduced in the garage environment. With the help of the NER, no diesel smoke particles will enter the garage environment; there is 'Zero Emission'.

Its unique design allows the NER zero emission system to be used as a combi unit for passenger cars as well as for trucks. At the front panel of the NER you will find two grips for the mechanical valves. With these valves you can easily select the passenger car inlet or the truck inlet, depending on the vehicle to test.

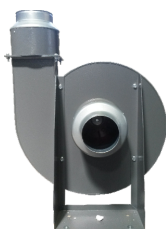
The NER zero emission unit is an investment that saves money, time and health. Especially for technicians and inspectors in test centres where thousands and thousands of tests are performed every year, one can imagine how much pollution is generated inside these test centres. In a normal garage environment the Maximum Permitted Concentration (MPC) of black coal over 8 hours is 3.5 mg/m<sup>3</sup>. With the NER zero emission system you can avoid this pollution and create a cleaner and healthy test environment.

### Specifications

Minimal flow extraction:	1000 m <sup>3</sup> /h
Minimal flow truck version:	2000 m <sup>3</sup> /h
Extraction system connection:	ø 180 mm
Dimensions (L x W x H – excl. casters):	750 x 500 x 930 mm
Weight (excl. sample hoses):	30 kg
<b>- Passenger car sample hose:</b>	
Diameter hose and connection funnel:	ø 125 mm
Hose length:	2,5 m
<b>- Truck sample hose:</b>	
Diameter hose and connection funnel:	ø 180 mm
Hose length:	3,5 m



### Optional:



Extraction fan



Thermal switch



Extraction hose