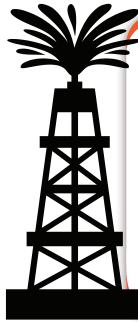




# PROPANE 101



**BRIDGMAN OIL**

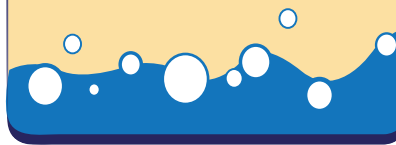


Propane is a liquefied petroleum gas that comes out of both oil and gas wells. Propane does not occur naturally though. Raw crude oil or raw natural gas is refined to make different types of petroleum products, one of which is propane. Following its refinement, propane is stored as a liquid under pressure until utilized, at which point it becomes a gas.

## Propane Properties Explained

### BOILING POINT

Propane is a liquid at -50°F and boils at -44°F. In other words, at 10 degrees below zero, propane is well past its boiling point. What does this mean to ordinary people like us? It means that propane is cold enough freeze your skin (and tissue underneath) to the point of severe damage. Water is the first aid treatment for a liquid exposure to your skin.



### SPECIFIC GRAVITY

Specific gravity is density of some other substance taken as standard, in this case, air. If air is 1, the specific gravity of propane is 1.52. What does this mean? Propane is heavier than air and will seek and/or rest in the lowest confined space available. Any source of ignition in these areas (such as a pilot light, spark, heater element, or electric motor) could cause an explosion or a fire.



## FLAMMABLE VAPORS ARE A SERIOUS SAFETY HAZARD!

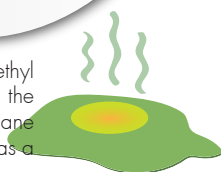


Vapors from flammable products such as gasoline, kerosene, paint thinner, and solvents, can be ignited accidentally by the pilot light of a propane appliance.

### TO HELP REDUCE THE RISK OF FLAMMABLE VAPOR IGNITION:

- ✓ Store flammable liquids in well-sealed containers outside.
- ✓ Do not use gasoline, cleaning fluids, oil-soaked rags, or other flammable liquids inside a building where propane appliances are located.

Propane has no "natural smell" so an odorant called ethyl mercaptan is added. Propane manufacturers add the smell deliberately to help alert customers to propane leaks, which can create a safety hazard. Propane has a strong, unpleasant smell like rotten eggs.



**PROPANE VAPORS CAN BE DANGEROUS.** Propane vapor is also combustible and can ignite explosively. Keep propane storage containers closed. Never store propane cylinders in an enclosed area, or near a heat or ignition source.