



active
ELECTRICAL SUPPLIERS LTD

ted TRADE telfers

TRADE ELECTRICAL DEALS

APRIL - JUNE 2026



Blast off with these unbeatable deals!

Nexans
ELECTRIFY THE FUTURE



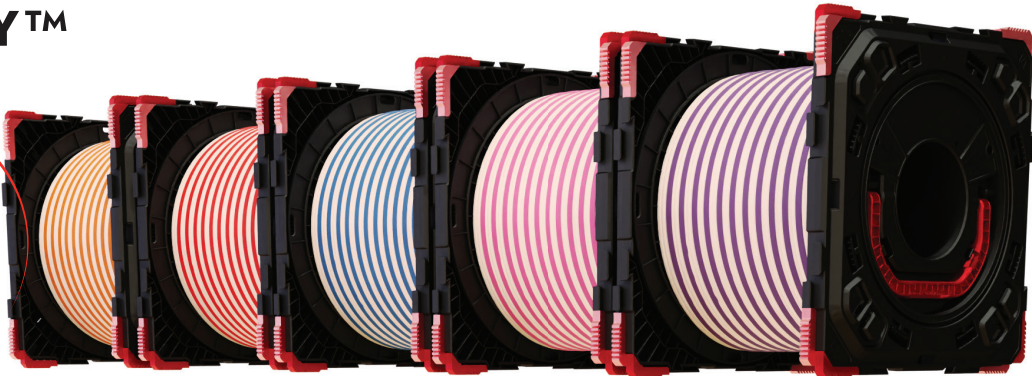
**ENTER TO
WIN**
1 OF 3 MAKITA TOOL KITS

WORTH \$799

**SPEND \$750* ON BOOST
AND GO IN THE DRAW TO WIN**

MOBIWAY™
BOOST

RETURN YOUR
EMPTY BOOST
SPOOLS TO
THE POINT OF
PURCHASE
& EARN!



*Terms and Conditions Apply: The total value must be spent on one invoice to go in the draw to win.



VYNCO
LOPEZ
LED RECESSED
DOWNLIGHTS

VYNCO.CO.NZ



Lopez Downlight - 8W 860-920 Lumen White
LOPEZ



Axial 150mm In-Line Fan Kit 6m Duct with SS
VIG3 VA150K6S



Axial 150mm In-Line Fan Kit 3m Duct
VA150K



VYNCO HOME

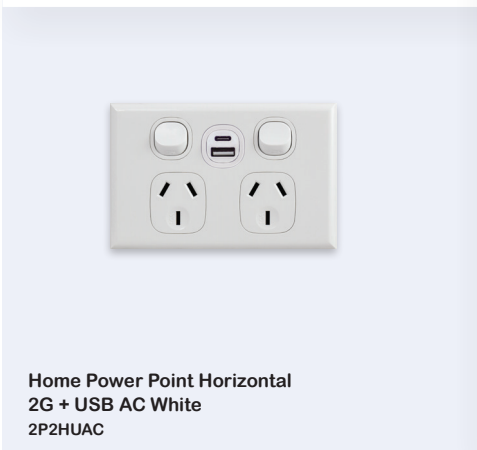
SWITCHGEAR
RANGE



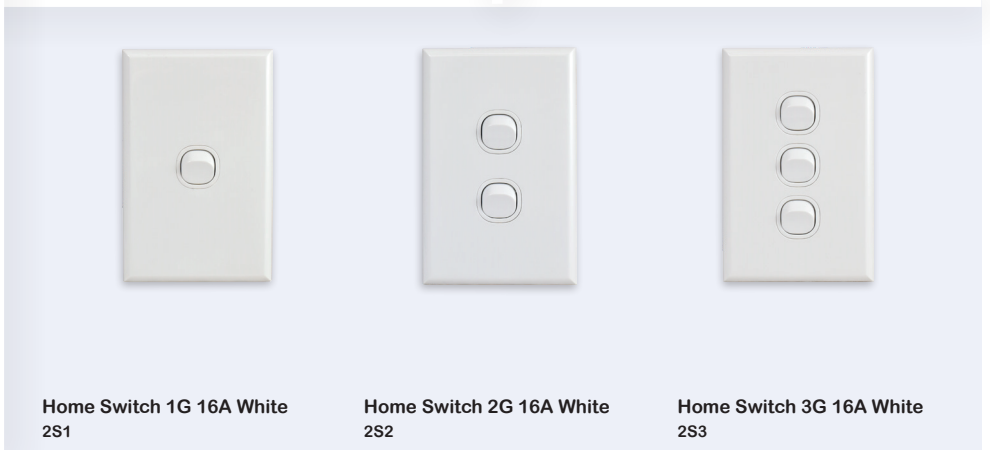
Home Power Point 1G 10A White
2P1H Horizontal • 2P1V Vertical



Home Power Point 2G 10A White
2P2H Horizontal • 2P2V Vertical



Home Power Point Horizontal
2G + USB AC White
2P2HUAC



Home Switch 1G 16A White
2S1

Home Switch 2G 16A White
2S2

Home Switch 3G 16A White
2S3

Energizer



Energizer Max Plus™ Bulk AAA Battery 24 Pack
E300688700



Energizer Max Plus™ Bulk AA Battery 24 Pack
E301399200



Energizer Max Plus™ 9V Battery 1 Pack
E000035700



Energizer Speciality 2032 2 Pack
E303803800



Energizer Headlight TIER2 HDL40 500L Y24A32
E300836200



Energizer Torch LED Headlight Hard Case
E300436400

Starrett Tools

Starrett

Starrett

BONUS



Debris Collector + Bonus 450mm Level
DB2



8-metre Tape Measure
KTX1-8M-WV



6-Piece Professional Knife Set (Black Handle)
BKK-6B3



Tool Bag - Large
410mm (L) x 240mm (W) x 270mm (H)
K-BGL2016



230mm Torpedo Level
KLTS9-N



Auto-Folding Electrician Knife
KUXP010-N

KLEIN TOOLS
EST. 1857
For Professionals... Since 1857[®]USA



Klein Tools Hi Leverage Universal
Combo Pliers 215mm
A-12098



Klein Tools Wide-Beam Headlamp
with Strap
A-56308



Klein Tools Thermal Work Gloves, Sizes
Small, Medium, Large, X-Large
A-60618, A-60619, A-60620, A-60621



Klein Tools 8-in-1 Metric Flip Socket
A-32934M



Klein Tools Ratcheting Crimper Kit
A-3000CRKIT



Klein Tools Diagonal Cutting
Pliers, Angled Head
A-D2000-48

Makita Tools



40V XGT Magnetic Light 1200lm
ML013G



18V LXT Magnetic Light 1200lm
DML819



18V LXT Cordless 5-Pc.
Combo (5.0Ah) Kit
DLX5109TX1



40Vmax Brushless 2-Pc.
Combo (4.0Ah/2.5Ah) Kit
DK0245G201

HALCYON PRO BATTENS

Halcyon Pro Battens are a core commercial range for trade professionals who demand reliable performance without compromise. Engineered for longevity and consistent light output rather than short-term cost savings, they deliver a dependable solution for new installs and retrofit projects across offices, retail, education, industrial, and general commercial spaces.



PRO BATTEN V1 Selectable 4000K/6000K, CRI80, Flicker-free, 54,000hr lifespan, W84 x H70mm

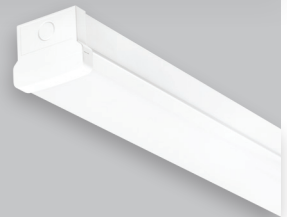
1200mm



Standard (Non-dim) Selectable
20-40W, 2600-4850lm
LED441 W46

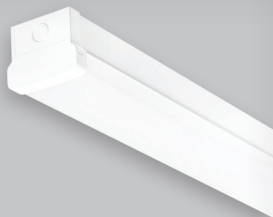


Phase Cut Dimmable,
40W, 4850lm
LED441 W46D



Emergency, 40W,
4850lm
LED441 W46EM

1500mm



Standard (Non-dim), Selectable
44-60W, 5400-6800lm
LED442 W46



Dimmable, 44W, 5400lm
LED442 W46D



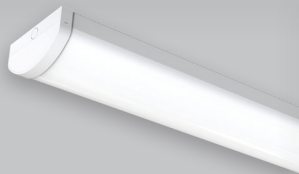
Emergency, 60W, 6800lm
LED442 W46EM

PRO BATTEN WIDE V1 Selectable 4000K/6000K, CRI90, IP54, Flicker-free, 72,000hr lifespan, W163 x H82mm

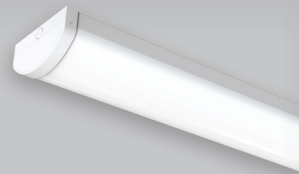
1200mm



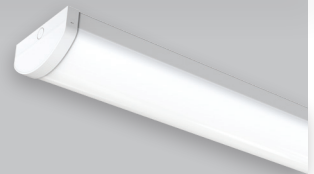
Standard (Non-dim), Selectable
29W-50W, 3775-6125lm
LED444-W46



Phase Cut Dimmable, Selectable
40-54W, 4100-5500lm
LED444-W46-D

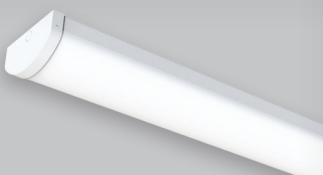


50W, <6125lm
LED444-W46-DD



Emergency, Selectable
44-58W, 5000-6300lm
LED444-W46-EM

1500mm



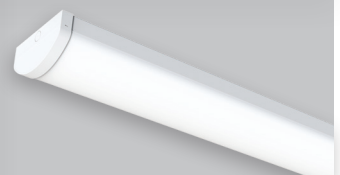
Standard (Non-dim), Selectable
37-70W, 5000-8225lm
LED445-W46



Phase Cut Dimmable, Selectable
40-54W, 4700-6000lm
LED445-W46-D



Dali, 70W, <8225lm
LED445-W46-DD



Emergency, Selectable
56-76W, 6800-8800lm
LED445-W46-EM

HUGO
LIGHTING



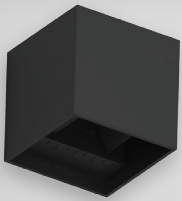
Spend \$250 on selected items and go in the draw to **WIN A PAIR OF Bluetooth glasses** (\$199 RRP)



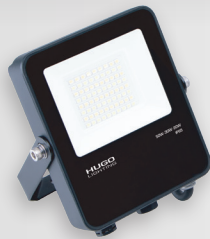
DLEK3223 8W 850lm Low Glare
DLEK3223



DLEK3220 4CCT 8W 870LM
DLEK3220



SWL441 Up/Down Adjustable
Wall Light
SWL441BK



3CCT Floodlight 20-30-50W
5,000lm. FLAC3SEN Sensor
accessory available
FLAC3050



3CCT Floodlight 50-70-100W
10,000lm. FLAC3SEN Sensor
accessory available
FLAC3100



3CCT Floodlight 100-150-200W
20,000lm. FLAC3SEN Sensor
accessory available
FLAC3200

Switch



SLED DOME FIXED & TILT
Available in black and white



7W fixed DL, Convex Opaque, IC-F, 110°,
Switchable CCT, 90CRI, 220mA Dimming Driver
SLED215F-W1S1P



10W Fixed DL, Convex Opaque, 100mm OD, IC-F,
110°, Switchable CCT, 90CRI, 300mA Dimming Driver
SLED315F-W1S1P



10W Tilt DL, Convex Opaque, IC-F, 110°, Switch-
able CCT, 90CRI, 300mA Dimming Driver
SLED315T-W1S1P



12.2W Fixed DL, Convex Opaque, IC-F, 110°,
90CRI, 300mA Dimming Driver
SLED415F-W1S1P Switchable CCT
SLED415F-W1SDP 3000-2000K



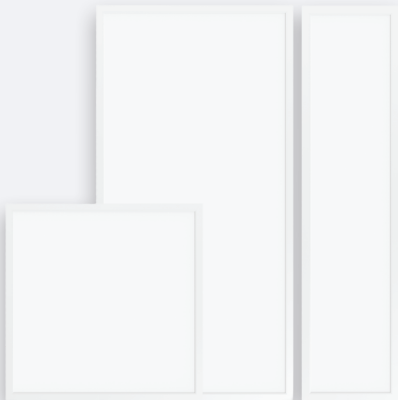
20.6W Fixed DL, Convex Opaque, IC-F, 110°,
90CRI, 500mA Dimming Driver
SLED515F-W140P 4000K
SLED515F-W1S1P Switchable CCT
SLED515F-W1SDP 3000-2000K



ASTRO HIGHBAY

Astro LED Highbay Wattage Selectable
100W/150W/200W 3CCT- 4K/5K/6K
ASTRO-200-8456-90

PRIME PANEL

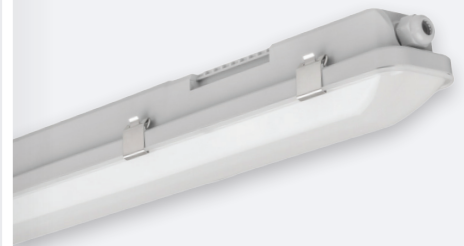


30W LED Prime Panel 600x600
3,600lm UGR<19 4000K
PRIME6060-30-840

42W LED Prime Panel 1200x600
5,000lm UGR<19 4000K
PRIME1260-42-840

30W LED Prime Panel 1200x300
3,600lm UGR<19 4000K
PRIME1230-30-840

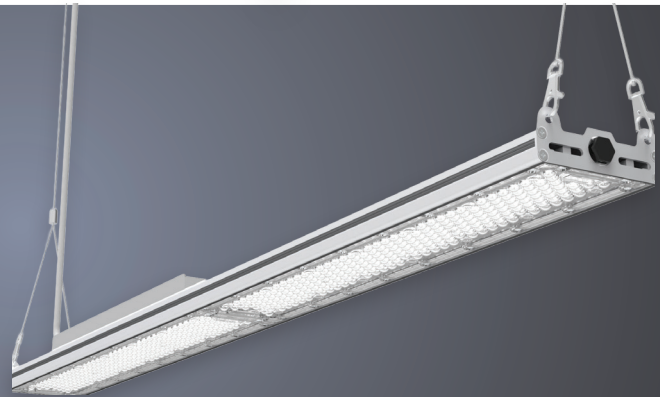
TRIDENT IP66 BATTEN



50W Trident LED IP65 Batten
1500mm 4000K
TRI1500-50-840

SLATE LINEAR HIGHBAY

Slate LED linear highbay Selectable
150W/100W 4000K 90 degree distribution
SLATE-150-840-G-90



BOXY BATTEN



50W LED Boxy Batten 1500mm
7000lm 3CCT- 4K/5K/6K
BOXY1500-50-8456

40W LED Boxy Batten 1200mm
5600lm 3CCT- 4K/5K/6K
BOXY1200-40-8456

TYPHOON IP66 BATTEN



Typhoon LED IP66 Batten
1500mm Wattage Selectable
32W/39W/47W/56W 3CCT - 3K/4K/6K
TYP1500-56-8346

Typhoon LED IP66 Batten
1200mm Wattage Selectable
22W/28W/34W/40W 3CCT- 3K/4K/6K
TYP1200-40-8346

PIERLITE®

DALI WALL PLATE DIMMER
Simple lighting control for DALI light fixtures. Configurable minimum brightness setting, multi-point control and able to control up to 50 DALI drivers on a single DALI line.



Rotary Dali Dimmer & Switch Wall Plate
DGDALIDM

ECO WEATHERPROOF BATTEN

Selectable lumen and colour 4000K/5000K/6500K, IP65 and IK08 rated



BWP Eco Weatherproof Batten GEN2
5FT 27/37/44/56W 4/5/65K
BWPECO505G2



BWP Eco Weatherproof Batten GEN2
4FT 19/28/33/41W 4/5/65K
BWPECO404G2

TABLET WALL LIGHT

IP65 3000K. Aluminium Body



Tablet Wall Light Direct
4W 3K Black
TABL830B



Tablet Wall Light Direct & Indirect
8W 3K Black
TABLDI830B

ECO BATTEN

Selectable lumen and colour 4000K/5000K/6500K, flicker free



ECO LED Batten GEN4 50W 5FT Colour Select & Lumen Select, Non-Dimmable
ECOBAT505ECSLSG4



ECO LED Batten GEN4 36W 4FT Colour Select & Lumen Select, Non-Dimmable
ECOBAT404ECSLSG4

PHILIPS



SMARTBRIGHT PANEL

Selectable lumen and colour 4000K/5000K/6500K



RC170B LED40_45_50/SCCT PSU W60L120
RC170BG355P6012

RC170B LED34_37_41/SCCT PSU W60L60
RC170BG331P6060

RC170B LED34_37_41/SCCT PSU W30L120
RC170BG331P3012

CORELINE SLIM BATTEN

4000K or 6500K, 65mm slim profile with joinable feature for continuous lighting



CL Slim Batten 6000lm
1500mm BN126C PSU
6.5K BN12660L8655FT
4K BN12660L8405FT

CL Slim Batten 4100lm
1200mm BN126C PSU
6.5K BN12641L8654FT
4K BN12641L8404FT

SMARTBRIGHT HIGHBAY

Selectable lumen and colour 4000K/4500K/5000K, low glare and flicker free



BY240P 200W_100W/840_850/
WB G2
BY240LED250854WB

Sabre®

**PURCHASE A
TWIN-PACK OF SABRE®
THUNDER WIPES™ AND
RECEIVE A FREE**

*500ml V®
Up the Wahs
energy drink.*

While stocks last

Promotion includes purchase of a twin pack of TW100 only. Promotion valid from 1 April - 30 June 2026.



Stanilite

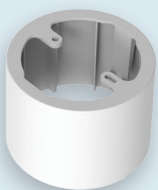
**The Original.
The Standard.
The Future.**

Stanilite® ST Series

Smarter emergency lighting that leads the way with intelligent self – testing capabilities.



Stanilite®



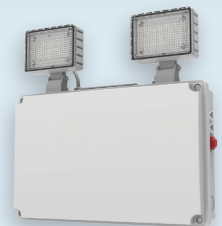
ST Spitfire® Surface Mount Kit Self-Test SMK80



Emergency Exit LEF Self-Test 3W EXMFLEDST



ST Spitfire® LED Self-Test NM DB63 SFLEDSMST



Weatherproof LED Flood Non-Maintained Self-Test 500lm WPFLLED5WST



Watchman AJ-770S14 Trade Pack
AJ-770S14-TP



Watchman Mini 10Y Interconnected Heat Alarm
AJ-770T4-S



PURCHASE ANY GEWISS PRODUCT AND YOU'LL GO IN THE DRAW TO WIN 1 OF 3

Electric Lawnmowers

Tandem 19-inch Self-Propelled 120V lithium battery-powered 4-1 Lawnmower. RRP \$799

Plus, score hundreds of instant spot prizes—Gewiss T-shirts, umbrellas, tool pouches, tape measures, and more! (While stocks last)

Megger

PURCHASE A MFT1815 MEGGER MULTIFUNCTION TESTER AND GET A FREE MEGGER TPT420 TWO POLE VOLTAGE TESTER (Valued at RRP \$313.00)

MFT1815 Megger Multifunction Tester
MFT1815





SKYFAN DC 48"/1200mm 3
Blade Sweep Fan White
SKY1203WH



Intelligent Humidity
Automated Wall Fan
FAN5901



150mm Inline Extraction
Fan Kit SF150S (SF6S)
FAN0101



Contour 150mm Centrifugal High
Steam Area Fan Matte White Fascia
FAN7033 Round • FAN7034 Square

MANROSE®



Manrose® Designer Satin LED HFL2
FAN6880 White



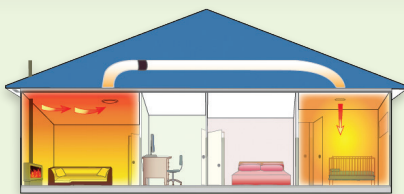
Manrose® Designer Satin LED HFL2
FAN6881 Silver



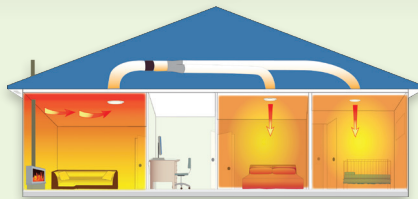
Manrose® Designer Satin LED HFL4
FAN6882 White



Manrose® Designer Satin LED HFL4
FAN6883 Silver



Heat Retention Plus HeatTrans 1 Room
FAN7230



Heat Retention Plus HeatTrans 2 Room
FAN7231

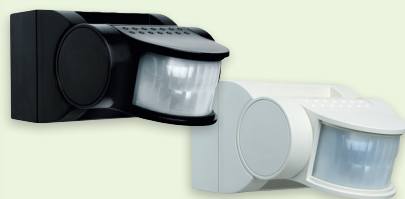


Heat Retention Plus HeatTrans 3 Room
FAN6879

Simx Lighting



CUBIC 500 10W 3CCT IP65
LHT1230 Black • LHT1231 White



Smart Sense 180° PIR Sensor IP55
LHT0119 Black • LHT0120 White



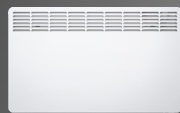
LED EcoSpot PIR Sensor Light IP44
LHT0244 Black • LHT0250 White

STIEBEL ELTRON

Heating made for Home Comfort

Hot Water Heat Pumps

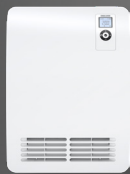
50YRS
OF HEAT PUMPS



CNS Trend



CNS-B Move 2000



CK Premium



IW 120



Engineered in Germany, Enjoyed in New Zealand

View the range at stiebel-eltron.co.nz

Premium Tools



5 YEAR WARRANTY



TOOL BAGS THAT WORK

Engineered for hands-free carrying without compromising capacity.



VETO PRO PAC® Tech Pac 250mm x 360mm x 555mm, 4.2kg (empty)
VETOTECHPAC1

The go-to pouch for fast access and everyday efficiency.



VETO PRO PAC® TP-XL 165mm x 254mm x 330mm, 1450g (empty)
VETOTP-XL



The world's #1 residential energy storage system.

Introducing FORCE H3X Battery. Inverter. EMS. BMS. UPS. One fully integrated system — installed in 15 minutes.

Every component — from cell to software — designed, built, and supported by Pylontech. Nothing from a third party. Nothing compromised.



SYSTEM INTEGRATION

No mixed-brand setups. No split warranties.
No passing the buck between suppliers.
Every component designed, built, and supported by Pylontech — from cell to system.
Trusted in 2 million+ installations across 90+ countries.

BUILT FOR NEW ZEALAND

IP65-sealed, C5-M corrosion rated — built for coastal, alpine, and rural conditions.
Fanless passive cooling (<29dB) — quiet enough for any living space.
Operates from -10°C to 55°C.
No vents. No filters. No moving parts.

RELIABILITY

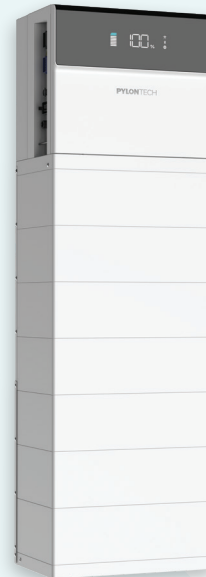
8,000+ full-depth cycles at 1C — equivalent to 15+ years of daily use.
Built-in UPS with <10ms switchover — backup is standard not an add-on.
10-year full-system warranty covering both battery and inverter.
BloombergNEF Tier 1 rated — independently verified performance and reliability.
Sealed, fanless design — minimal servicing, fewer callbacks.



SINGLE PHASE MODELS (HY-1P)
6kW or 8kW inverter output.
5.12–20.48kWh storage (1–4 modules).
Ideal for family homes.

Force H3X Hybrid Solar System,
6kW 1P, No Batteries
FH3X-1P-6KW

Force H3X Hybrid Solar System,
8kW 1P, No Batteries
FH3X-1P-8KW



THREE PHASE MODELS (HY-3P)
10kW or 15kW inverter output.
10.24–35.84kWh storage (2–7 modules).
Ideal for larger homes, high loads,
and future expansion.

Force H3X Hybrid Solar System,
10kW 3P, No Batteries
FH3X-3P-10KW

Force H3X Hybrid Solar System,
15kW 3P, No Batteries
FH3X-3P-15KW





HPM PIR 360° 8m Recessed Auto Movement Sensor White
630R02WE



HPM Aquascan PIR 110° 18m Movement Sensor White
630/9-3w



HPM PIR 180° Wall Mount Motion Sensor White
630/3

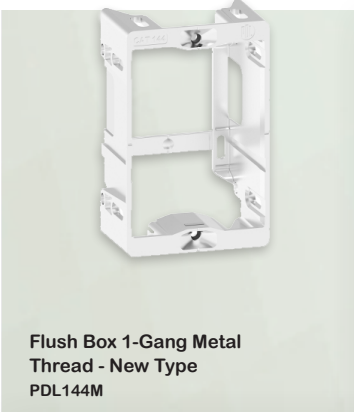


HPM PIR 360° 6m Recessed Auto Movement Sensor
630R01WE - White • 630R01BL - Black

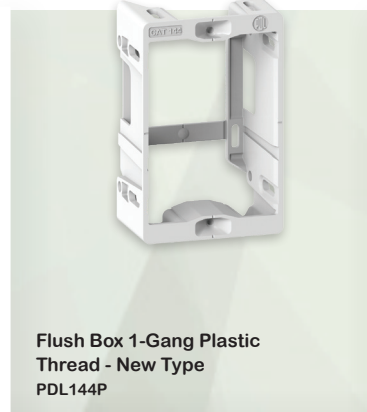


HPM PIR 180° 12m Surface Mount Movement Sensor
630SM01WE - White • 630SM01BL - Black

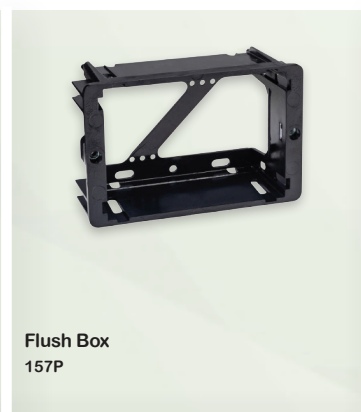
PDL



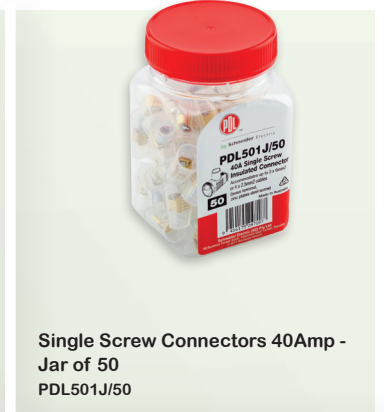
Flush Box 1-Gang Metal Thread - New Type
PDL144M



Flush Box 1-Gang Plastic Thread - New Type
PDL144P



Flush Box
157P



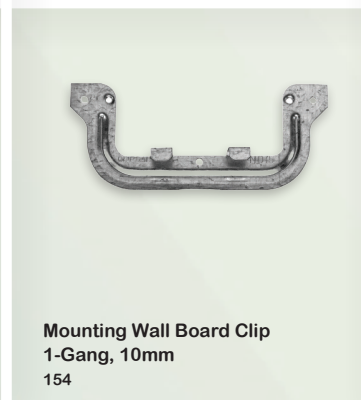
Single Screw Connectors 40Amp - Jar of 50
PDL501J/50



Junction Box 4 Terminal
PDL544



Standard Mounting Block
1-Gang, 34mm
PDL137MB-VW



Mounting Wall Board Clip
1-Gang, 10mm
154



3-Pin Surface Socket,
10A, 230/240VAC
PDL51SSE



DESIGNED TO FIT YOUR LIFESTYLE.
Making every home and business smart, safe and secure.



EliteAlarms Security Alarm Kit which includes: 1 x EC-BASE KIT & 1 x EC-LCD EC-KIT LCD NC



Plug on Ethernet board for EC Security & Control system (EC-PCB) EC-IoT

Contact your local Telfer Electrical or Active Electrical Suppliers branch today.

TELFER ELECTRICAL BRANCHES

- Nelson**
Phone (03) 548 6611
- Richmond**
Phone (03) 541 0044
- Greymouth**
Phone: (03) 429 6291
- Papanui**
Phone (03) 352 6040
- Christchurch Central**
Phone (03) 366 1814
- Hornby**
Phone (03) 344 5505

- Rolleston**
Phone (03) 347 0303
- Timaru**
Phone (03) 683 1366
- Cromwell**
Phone (03) 445 0892
- Otago**
Phone (03) 466 3730
- Mosgiel**
Phone (03) 484 7277
- Southland**
Phone (03) 218 2080

- Te Awamutu**
Phone: (07) 777 8016
- Te Kuiti**
Phone: (07) 777 8016
- Tauranga**
Phone: (07) 777 0122
- Mt Maunganui**
Phone: (07) 777 0378
- Tauriko**
Phone: (07) 571 1568
- Rotorua**
Phone: (07) 399 4050

ACTIVE ELECTRICAL BRANCHES

- Whangarei**
Phone: (09) 699 3050
- Warkworth**
Phone: (09) 777 4050
- Albany**
Phone: (09) 909 0490
- Mt Eden**
Phone: (09) 903 0630
- Penrose**
Phone: (09) 555 7740
- East Tamaki**
Phone: (09) 399 8065
- Drury**
Phone: (09) 869 3316
- Te Rapa**
Phone: (07) 903 4030
- Hamilton**
Phone: (07) 903 5087
- Cambridge**
Phone: (07) 823 1069

- Taupo**
Phone: (07) 905 5029
- New Plymouth**
Phone: (06) 215 4246
- Hastings**
Phone: (06) 975 4020
- Palmerston North**
Phone: (06) 399 7051
- Petone**
Phone: (04) 555 0758
- Nelson**
Phone: (03) 970 2198
- Blenheim**
Phone: (03) 578 3717
- Papanui**
Phone: (03) 943 5359
- Christchurch Central**
Phone: (03) 379 1667
- Hornby**
Phone: (03) 741 1302
- Timaru**
Phone: (03) 956 5020

