

# RELIABLE AND SECURE A4 BLACK AND WHITE PRINTER DELIVERING HIGH BUSINESS PRODUCTIVITY.

Designed to support small to medium size offices and workgroups with all their print needs.

## imageFORCE 1643P



### HIGH PRODUCTIVITY

Fast start-up and print speeds, plus flexible configuration with an expandable paper capacity options to support high business productivity.

### ROBUST SECURITY

Protect your business with the latest security features, including machine learning-AI recommended security settings that help safeguard device, network and all your sensitive data.

### SUPPORTING SUSTAINABILITY

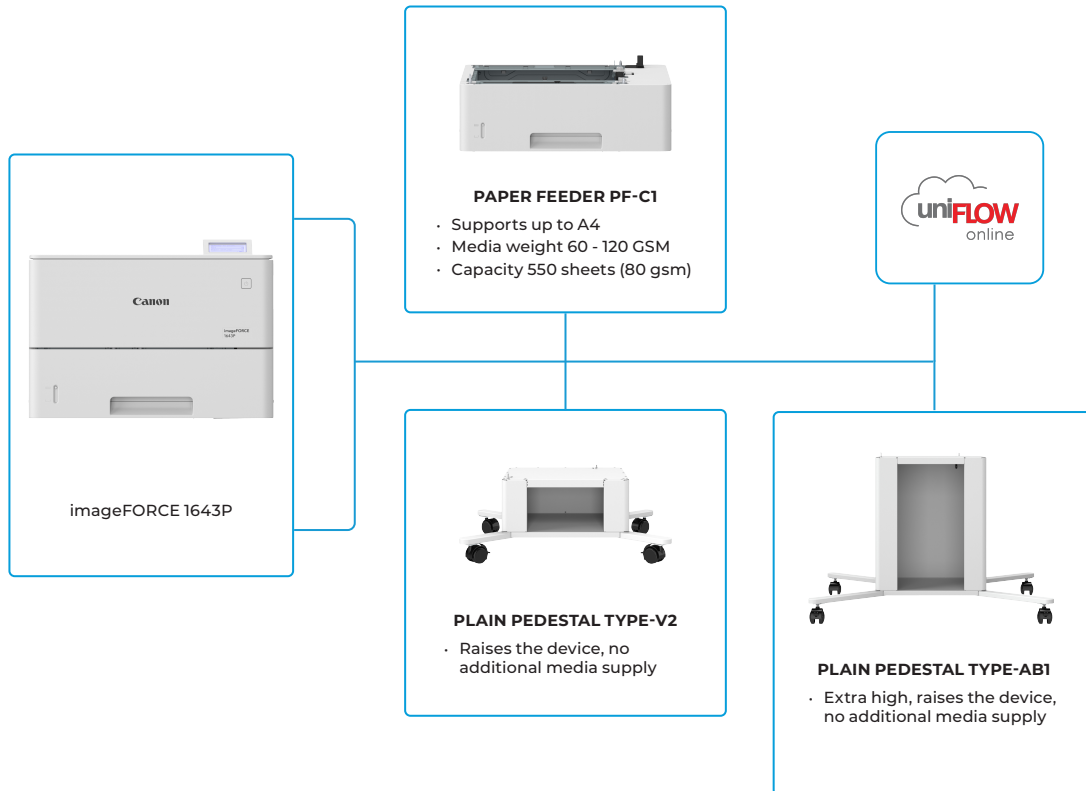
Boost your sustainability efforts with devices that are built with up to 10% recycled materials and feature technologies like low temperature melting toner to lower the energy consumption.

### PROVEN RELIABILITY

Compact yet capable, this latest generation of market proven devices deliver outstanding reliability and performance to produce high quality print output day-in day-out.

# imageFORCE 1643P

## MAIN CONFIGURATION OPTIONS



This flat configuration is for illustration purpose only. For a complete list of options and the exact compatibility relationships, please refer to the [online product configurator](#).

# TECHNICAL SPECIFICATIONS

# imageFORCE 1643P

| MAIN UNIT                         |   |
|-----------------------------------|---|
| Machine type                      | A4 Monochrome Laser Beam Printing   |
| Core functions                    | Print   |
| Processor                         | 1.6GHz Dual Core Processor and 800MHz Single Core Processor   |
| Control Panel                     | 5 Line LCD, 5 LED (Online, Ready, Message, Job and Energy saver), Buttons, 10-key numeric keypad  |
| Memory                            | RAM: 2.0GB  |
| Storage                           | eMMC 32GB eMMC  |
| Interface Connection              | NETWORK<br>Standard: 1000Base-T/100Base-TX/10Base-T<br>Wireless LAN (IEEE 802.11b/g/n)<br>OTHERS<br>USB 2.0 (Host) x 1, USB 2.0 (Device) x 1  |
| Paper Supply Capacity (A4, 80gsm) | Standard: 650 sheets<br>100-sheet Multi-purpose tray x 1<br>550-sheet Paper cassette x 1<br>Maximum: 2,300 sheets (with 1 x PAPER FEEDER PF-C1x3)   |
| Paper Output Capacity (A4, 80gsm) | 150 sheets  |
| Supported Media Types             | Multi-purpose tray:<br>Thin, Plain, Recycled, Color, Heavy, Bond, Label, Letterhead, Envelope<br><br>Paper Cassette:<br>Thin, Plain, Recycled, Color, Heavy, Bond, Letterhead   |
| Supported Media Sizes             | Multi-purpose tray:<br>Standard size: A4, A5, A5R, A6, B5<br>Custom size: 76.2 x 127.0 mm to 216.0 x 355.6 mm<br>Envelopes: COM10 No.10, Monarch, DL, ISO-C5<br>Envelope custom size: 76.2 x 127.0 mm to 216.0 x 355.6 mm<br><br>Paper Cassette:<br>Standard size: A4, A5, A5R, A6, B5<br>Custom size: 105.0 x 148.0 mm to 216.0 x 355.6 mm |
| Supported media weights           | Multi-purpose tray: 60 to 200 gsm<br>Paper Cassette: 60 to 120 gsm<br>Duplex: 60 to 120 gsm   |
| Warm-up Time                      | 22 Seconds or less<br>From Sleep Mode: 4 Seconds or less  |
| Dimensions (W x D x H)            | 409 mm x 376 mm x 275 mm  |
| Installation Space (W x D)        | 609 mm x 867 mm   |
| Weight*                           | Approx. 16 kg   |
| *including regular toner          |   |
| PRINT SPECIFICATIONS              |   |
| Print Speed (BW and CL)           | 1-sided: Up to 43 ppm (A4), Up to 65.2 ppm (A5-Landscape)<br>2-sided: Up to 36 ipm (A4)   |
| Print Resolution (dpi)            | Up to 1,200 x 1,200   |
| Page description languages        | Standard: UFR II, PCL6, PCL5*, Adobe® PostScript®3™<br>*Commands supported only. Third party driver or direct printing from application required.   |
| Direct Print                      | Supported file types: PDF, TIFF/JPEG, XPS<br>(From USB Memory, Network Place)   |
| Printing from mobile and cloud    | AirPrint, Mopria, IPP Everywhere, Canon PRINT, uniFLOW Online, Universal Print  |
| OS Standard Printing              | Android/Windows® 10/Windows® 11/Chrome OS/macOS (11.2.2 or later) /iOS (15.2 or later) /iPadOS  |
| Fonts                             | PS fonts: 136 Roman<br>PCL fonts: 93 Roman, Barcode fonts*1<br><br>*1 Optional Barcode Printing Kit-D1 is required.   |
| Print Features                    | Secure Print, Secure Watermark, Header/Footer, Page Layout, Two-sided Printing, Mixed Paper Sizes/ Orientations, Toner Reduction, Poster Printing, Forced hold printing, Print Date, Scheduled Printing, Printing Using a Virtual Printer   |
| Operating System                  | UFR II: Windows® 10/11/Server2016/Server2019/Server2022/Server2025, macOS (10.15 or later)<br>PCL: Windows® 10/11/Server2016/Server2019/Server2022/Server2025<br>PS: Windows® 10/11/Server2016/Server2019/Server2022/Server2025, macOS (10.15 or later)<br>PPD: Windows® 10/11, macOS (10.15 or later)<br><br>As of Dec. 2025               |

| SECURITY SPECIFICATIONS           |   |
|-----------------------------------|---|
| Authentication And Access Control | User Authentication (Username and Password Login*), Department ID Authentication (Department ID and PIN Login, Function Level Login), uniFLOW Online (PIN Login, Picture Login, Picture and PIN Login, Card Login, Card and PIN Login, Username and Password Login, Department ID and PIN Login, Function Level Login), Access Management System (Access Control)<br><br>*Remote UI only                            |
| Document Security                 | Print Security(Secure Print, Encrypted SecurePrint, Forced Hold Printing, uniFLOW Secure Print*)<br>*1 Requires optional uniFLOW Online / uniFLOW   |
| Network Security                  | TLS1.3, IPSec, IEEE802.1X authentication (LAN/WLAN), SNMPv3, Firewall Functionality(IP/MAC Address Filtering), WPA3 support, Dual Network Support (Wired LAN/Wireless LAN, Wired LAN/Wired LAN), Disabling Unused Functions (Enabling/Disabling Protocols/Applications, Enabling/Disabling Remote UI, Enabling/Disabling USB Interface), Communication Line Separation (USB Port)                                   |
| Device Security                   | Protecting eMMC Data (FIPS140-2), Standard Storage Initialize, Job Log Conceal Function, Protecting MFP Software Integrity, Checking MFD Software Integrity & Platform Firmware Resiliency (NIST SP800-193) with Automatic System Recovery (Verify System at Start-up, Runtime Intrusion Detection enabled with Trelix Embedded Control)  |
| Device Management And Auditing    | Administrator Password, Digital Certificate and Key Management, Audit Log, Cooperating with External Security Audit System (Security Information and Event Management), Security Policy Setting   |
| ENVIRONMENTAL SPECIFICATIONS      |   |
| Operating Environment             | Temperature: 10 to 30 °C<br>Humidity: 20 to 80 % RH (Relative Humidity/No condensation)   |
| Power source                      | 220-240V(±10%) 50/60Hz (±2Hz)   |
| Power consumption                 | Maximum: Approx. 1400 W<br>Active printing: Approx. 507 W<br>Standby: Approx. 6.7 W<br>Sleep mode: Approx. 0.59 W<br>Typical Electricity Consumption (TEC)*: 0.35 kWh/week (230V)<br><br>*As per Energy star v3.2<br>For detailed information relating to Lot26 regulation, please go to: <a href="http://www.canon-europe.com/For_Work/Lot26/index.aspx">http://www.canon-europe.com/For_Work/Lot26/index.aspx</a> |
| Noise Levels                      | Sound Pressure:<br>Active: 54dB<br>Standby: 24dB<br>Sound Power:<br>Active: Duplex 68dB / Simplex 69dB<br>Standby: 37dB   |
| Standards                         | Blue Angel (Validation Pending)   |
| CONSUMABLES                       |   |
| Toner Cartridges                  | TONER T06 (20,500 pages)<br>*Estimated @5% coverage   |
| SOFTWARE AND PRINTER MANAGEMENT   |   |
| Tracking and reporting            | uniFLOW Online  |
| Remote management tools           | iW Enterprise Management Console<br>Monitoring Service  |
| Optimisation tools                | Canon Driver Configuration Tool   |
| PAPER SUPPLY OPTIONS              |   |
| Paper Feeder PF-C1                | Paper Capacity: 550 sheets (80 gsm)<br>Paper Type: Thin, Plain, Recycled, Color, Heavy, Bond, Letterhead<br>Paper Size:<br>A4, A5, A5R, A6, B5<br>Custom size: 105.0 x 148.0 mm to 216.0 x 355.6 mm<br>Paper Weight: 60 to 120 gsm  |
| HARDWARE ACCESSORIES              |   |
| Others                            | Plain Pedestal Type-V2<br>Plain Pedestal Type-AB1   |
| SYSTEM AND CONTROLLER OPTIONS     |   |
| Print Accessories                 | Barcode Printing Kit-D1<br>PCL International Font Set-A1  |

# imageFORCE 1643P

Trellix



## Certifications and compatibility



**Canon**

**Canon UK Ltd.**  
4 Roundwood  
Avenue  
Stockley Park  
Uxbridge  
UB11 1AF  
canon.co.uk

**Canon Ireland Ltd.**  
3090 Lake Drive  
Citywest Business Campus  
Saggart, Co. Dublin  
D24 XN47  
canon.ie