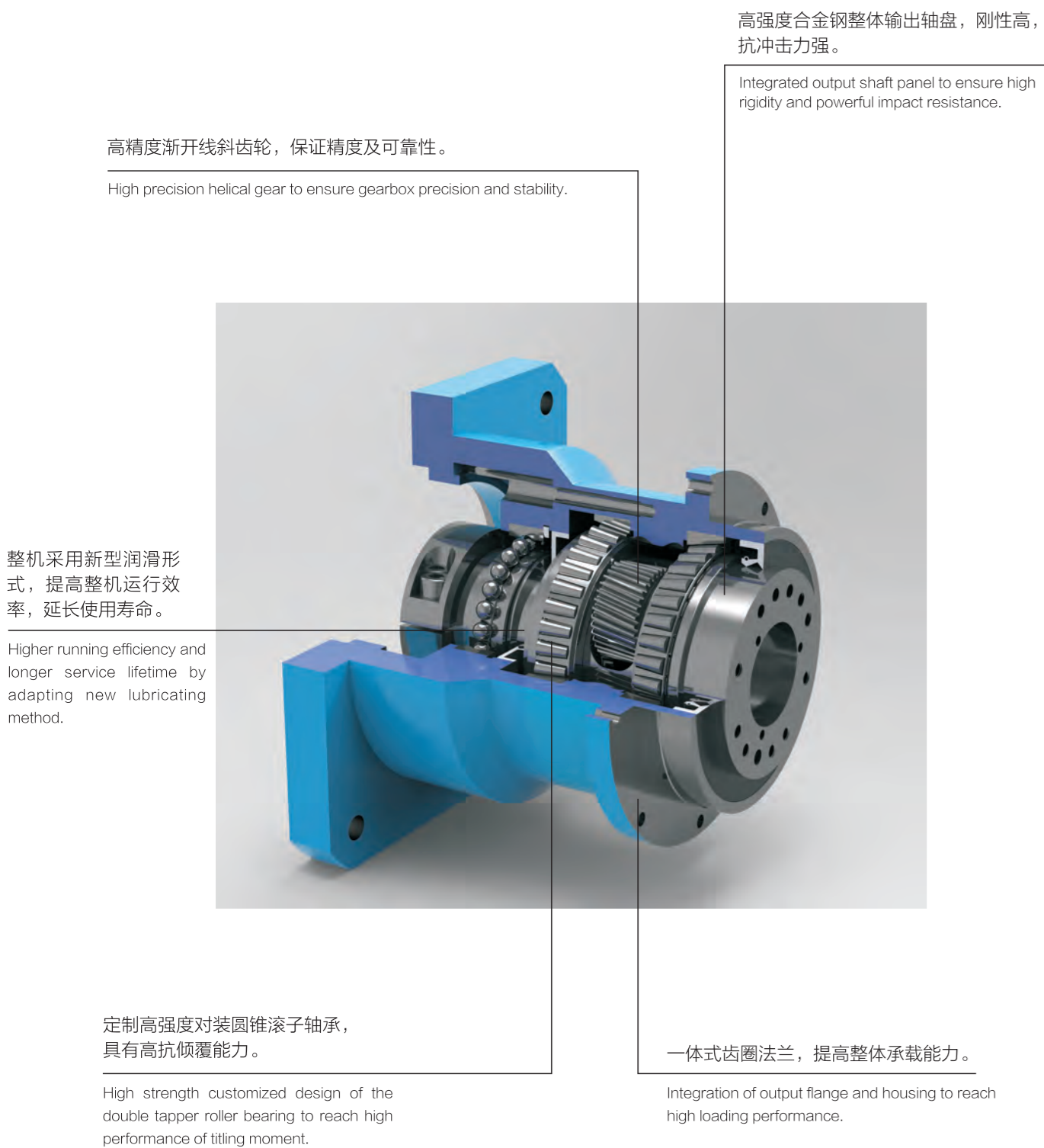


产品剖图解析



传天下 动无限 *The Perpetual Motion to Drive the World*

湖北科峰智能传动股份有限公司
Hubei Kofon Transmission Equipment Co., Ltd
地址: 湖北省黄冈市黄州区中粮大道9号
Add: NO.9 Zhongliang Avenue, Huangzhou District, Huanggang City, Hubei Province, China
电话(Tel): +86 713 8585866 8585868 邮箱(E-mail): info@kofon.com.cn
传真(Fax): +86 713 8585911 网址(Web): www.kofon.com.cn

KOFON

企业简介 The Company

湖北科峰智能传动股份有限公司是一家专业的集设计，研发，生产和销售伺服行星减速机，工程机械行星减速机，谐波减速机的高科技制造企业，在中国湖北建立有两个高精度传动设备制造基地。公司致力于为客户提供专业的动力传动解决方案。

作为全球动力传动领域的重要制造商，科峰传动已专注于精密传动制造领域近十年。公司建有传动技术研发中心，并与武汉大学和华中科技大学等高校进行长期技术合作，形成了自己独特的技术优势，并拥有多项自主专利技术。减速机产品具有高精度，高刚性，高扭矩及高负载容量等特点。

在工业自动化和智能化发展的新形势下，科峰传动积极整合来自全球的优质工业制造资源，装备有全球顶级的各类自动化机加工、齿加工、热处理等设备。目前，科峰传动产品超低侧隙行星减速机，谐波减速机已被广泛应用到包括智能工业机器人和自动化机械设备制造等在内的各大前沿工业制造领域。

未来，科峰传动将全方位助力全球工业4.0，竭力为全球动力传动系统领域提供优秀卓越的产品和传动解决方案。

Hubei Kofon intelligent transmission Co., Ltd. is a professional high-tech manufacturing enterprise integrating design, R & D, production and sales of planetary gear reducer for servo, planetary reducer for engineering machinery and harmonic reducer. It has established two high-precision transmission equipment manufacturing bases in Hubei, China. The company is committed to providing customers with professional power transmission solutions.

As an important manufacturer in the field of global power transmission, Kofon transmission has focused on the field of precision transmission manufacturing for nearly ten years. The company has established transmission technology research and development center, and has long-term technical cooperation with Wuhan University, Huazhong University of science and technology and other universities, forming its own unique technical advantages and owning a number of independent patent technologies. Reducer products have the characteristics of high precision, high rigidity, high torque and high load capacity.

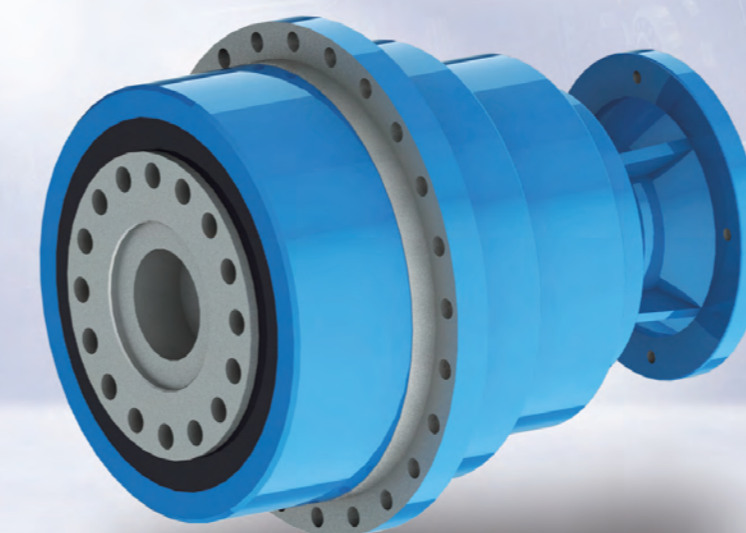
In the new situation of industrial automation and intelligent development, Kofon transmission actively integrates high-quality industrial manufacturing resources from the world, and is equipped with various kinds of top-level automatic machining, gear processing, heat treatment and other equipment in the world. At present, Kofon transmission products ultra-low backlash planetary reducer and harmonic reducer have been widely used in various leading-edge industrial manufacturing fields including intelligent industrial robots and automatic mechanical equipment manufacturing.

In the future, Kofon transmission will help global industry 4.0 in an all-round way, and strive to provide excellent products and transmission solutions in the field of global power transmission system.



高精度行星减速机KH系列 High Precision Planetary Gearbox KH Series

传天下 动无限
*The Perpetual Motion
to Drive the World*



KH行星减速机技术参数

KH Series Servo Planetary Gearbox Technical Date

产品型号 Model		KH070	KH090	KH120	KH160	KH205	KH255	KH285	KH365	KH470	RATIO	STAGE
额定输出 扭矩 Rated Output Torque	Nm	46	145	300	550	1250	1800	5375	12580	29190	4	1
		55	155	320	650	1200	2050	5550	7390	16750	5	
		50*	145*	300*	610*	1000*	1850*	2550	6550	8500	6	
		50*	135	290*	540	1000	1750*	2050	5250	7650	7	
		45	115	255	510*	1000*	1550	1800	3270	6760	8	
		42	105*	220*	440	910	1500*	1700	2880	6050	9	
		42	105	220	440	910	1500	1700	2880	6050	10	
		52	145	300	550	1250	1800	5375	12580	29190	16	
		55	145	300	650	1200	2050	5375	12580	29190	20	
		55	155	320	650	1200	2050	1080	5050	7040	24	
	52	145	305	550*	1250*	1800*	4940	12580	27040	32		
	55*	155	320*	650	1200	2050	3090	7390	16750	35	2	
	55	155	320	550*	1200*	2050*	3090	7390	16750	40		
	55*	155	320*	650	1200	2050	3090	7390	16750	45		
	55	155	320	650	1200	2050	3090	7390	16750	50		
	52	155	320	650	1200	2050	5375	12580	29190	80		
	52	155	320	650	1200	2050	3090	7390	16750	100		
	52	155	320	650	1200	2050	3090	7390	16750	125		
	52	155	320	650	1200/140	2050/140	5375	12580	29190	160		
	52	155	320	650	1200/180	2050/180	3090	7390	16750	200		
52	155	320	650/224	1200/252	2050/252	4940	12580	27040	256			
52	155	320	650/280	1200/315	2050/315	4940	12580	27040	320	3		
45	115	255	510/504	1000/441	1550/504	2050	3550	4050	512			
故障停止 扭矩 Emergency Stop Torque	Nm	3倍额定输出扭矩 Triple rated output torque										
最大径 向力 Max Radial Force	N	2500	4500	7800	12000	18000	45000	90000	115000	223000		
最大轴 向力 Max Axial Force	N	2000	3500	6000	10000	15000	22500	80000	95000	175000		
满载效率 Full loading Efficiency	%	97										1
		95										2
		93										3
平均寿命 Average lifetime	h	20000										
重量 Weight	kg	2	5.5	10	22	37	70	90	150	245	1	
		2.5	6.5	12.5	25	42	80	103	175	280	2	
		3	7.5	15.3	28	48	88	112	190	305	3	

角标 "1" 在输出转速100rpm时, 作用于输出轴中心位置 (L/2处) 之容许径向力及轴向力。

注: 带 "*" 的为不常用速比, 表格内有2组数字的表示扭矩对应的实际速比。

最大加速扭矩等于额定扭矩180%。

The subscript "1" in the output speed of 100RPM in the center of the output shaft position (L/2) permissible radial force and axial force.
Note: with "*" is not commonly used speed ratio, in the form of 2 groups of digital representation of the torque corresponding to the actual ratio.
The maximum acceleration torque is equal to 150% of the rated torque.

KH行星减速机技术参数

KH Series Servo Planetary Gearbox Technical Date

产品型号 Model		KH070	KH090	KH120	KH160	KH205	KH255	KH285	KH365	KH470	Ratio	Stage
转动惯量 Rotational Inertia	kgcm ²	0.14	0.48	2.74	7.54	23.67	54.37	54.37	75.1	85.75	4	1
		0.13	0.47	2.71	7.42	22.75	53.27	53.27	74.8	83.37	5	
		0.13	0.47	2.71	7.42	22.75	53.27	50.84	65.61	80.25	6	
		0.13	0.47	2.62	7.25	22.48	50.84	50.84	65.61	80.25	7	
		0.13	0.45	2.62	7.14	22.59	50.84	50.84	65.61	80.25	8	
		0.13	0.44	2.62	7.14	22.59	50.84	50.84	65.61	80.25	9	
		0.13	0.44	2.57	7.14	22.55	50.56	50.56	63.42	78.91	10	
		0.12	0.43	1.75	7.47	7.54	23.67	23.67	54.24	72.48	16	
		0.075	0.44	1.5	6.65	7.42	22.75	22.75	54.24	72.48	20	
		0.075	0.44	1.49	5.81	7.54	22.75	22.75	54.24	72.48	24	
		0.064	0.39	1.3	6.34	7.14	22.59	22.59	54.24	72.48	32	
		0.064	0.39	1.3	5.36	7.14	22.59	22.59	54.24	72.48	35	
		0.064	0.39	1.3	4.08	7.14	22.59	22.59	54.24	72.48	40	
		0.064	0.39	1.3	5.36	7.14	22.59	22.59	54.24	72.48	45	
		0.064	0.39	1.3	4.08	7.14	22.59	22.59	54.24	72.48	50	
		0.075	0.44	1.49	7.4	7.54	22.75	22.75	54.24	72.48	80	
		0.064	0.44	1.45	7.3	7.42	22.59	22.59	54.24	72.48	100	
		0.064	0.44	1.3	7.3	7.42	22.75	22.75	54.24	72.48	125	
		0.064	0.39	1.3	6.5	7.14	22.75	22.75	54.24	72.48	160	
		0.064	0.39	1.3	6.2	7.14	22.75	22.75	54.24	72.48	200	
0.064	0.39	1.3	5.7	7.14	22.75	22.75	54.24	72.48	256			
0.064	0.39	1.3	5.4	7.14	22.75	22.75	54.24	72.48	320			
0.064	0.39	1.3	5.4	7.14	22.59	22.59	54.24	72.48	512			
		≤1	≤1	≤1	≤1	≤1	≤2	≤2	≤3	≤3	PU	1
		≤3	≤3	≤3	≤3	≤3	≤5	≤5	≤5	≤5	P0	
		≤5	≤5	≤5	≤5	≤5	≤5	≤5	≤5	≤5	PU	
		≤8	≤8	≤8	≤8	≤8	≤8	≤8	≤8	≤8	P0	
		≤7	≤7	≤7	≤7	≤7	≤7	≤7	≤7	≤7	PU	
		≤10	≤10	≤10	≤10	≤10	≤10	≤10	≤10	≤10	P0	3
抗扭刚性 Torsional Rigidity	Nm/arcmin	10	25	60-80	110-160	320-370	900-950	1400	(2000)	(3200)		
侧倾力矩 Roll moment	Nm	85	220	400	1300	3000	5500	8000	15000	38000		
噪音 Noise	dB(A)	58	60	63	65	67	67	70	70	75		
最大输入 速度 Max input Speed	min ⁻¹	6000	6000	6000	6000	4000	4000	3000	2500	2500		
额定输入 速度 Rated input Speed	min ⁻¹	3000	3000	3000	3000	2000	2000	1500	1500	1500		

角标 "1" 环境温度20°C。

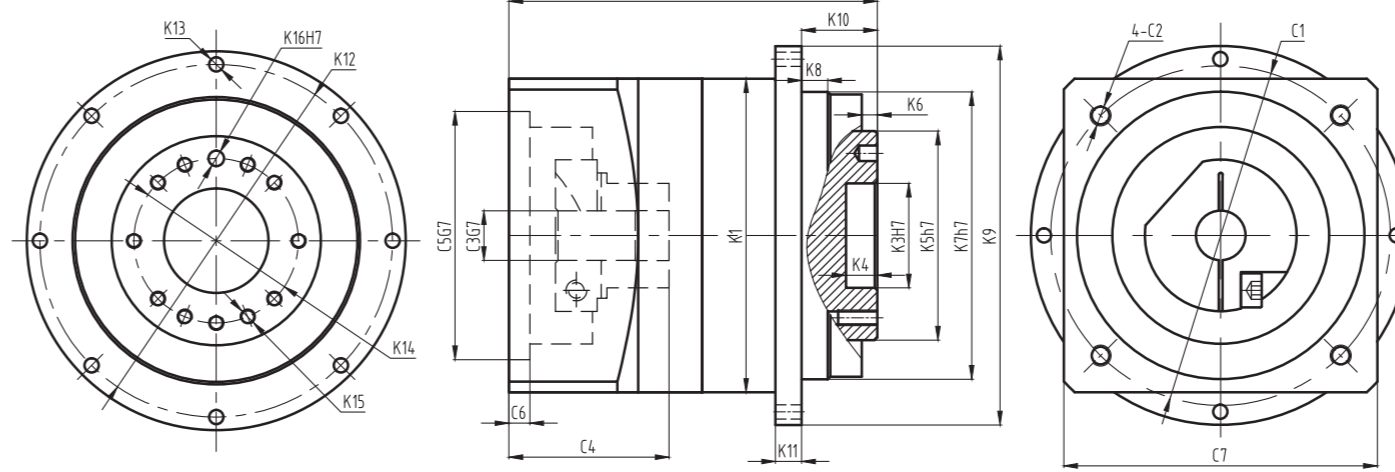
角标 "2" 音在n1=3000min⁻¹, 1米处测得。

The subscript "1" the environment temperature is 20°C.

The subscript "2" sound in n1=3000min⁻¹, measured at 1 m.

KH行星减速机尺寸

KH Series Servo Planetary Gearbox Size



型号	KH070			KH090			KH120			KH160			KH205		
级数	1	2	3	1	2	3	1	2	3	1	2	3	1	2	3
K1	φ70			φ97			φ120			φ160			φ210		
K2	87	110.7	134.4	117	148.5	179.8	141	185	203	196	257	276.5	235	297	358
K3		φ20		φ31.5			φ40			φ50			φ80		
K4		8			12			12			12			22.5	
K5		φ40			φ63			φ80			φ100			φ160	
K6		3			6			6			6			6	
K7		φ64			φ90			φ110			φ140			φ200	
K8		7			10			10			14.6			15	
K9		φ86			φ118			φ145			φ179			φ247	
K10		19.5			30			29			38			56	
K11		5			8			10			10			12	
K12		φ79			φ109			φ135			φ168			φ233	
K13		8-φ4.5			8-φ5.5			8-φ5.5			12-φ6.6			12-φ9	
K14		φ31.5			φ50			φ63			φ80			φ125	
K15		7-M5×8			7-M6×12			11-M6×15			11-M8×18			11-M10×17	
K16		φ5×6			φ6×7			φ6×7			φ8×8			φ10×10	
C1		φ70			φ90			φ145			φ200			φ145	φ215
C2		M5×12			M6×15			M8×20	M6×15		M12×25	M8×20	M12×25	M12×25	M12×25
C3		φ14			φ19			φ24	φ19		φ35	φ24	φ42	φ35	
C4		32.1			41.6			61.3	41.6		82	61.3	82.5	82	
C5		φ50			φ70			φ110	φ70		φ114.3	φ110	φ180	φ114.3	
C6		6.5			6.5			8	6.5		8	8	8	8	
C7		70			97			120	89		175	120	190	175	

型号	KH255			KH285			KH365			KH470		
级数	1	2	3	1	2	3	1	2	3	1	2	3
K1	φ255			φ285			φ365			φ470		
K2	305.5	367.5	427.5	320	397.5	442	405	458	486	535	652	638
K3		φ100			φ95			φ120			φ180	
K4		20			20			20			20	
K5		φ180			φ200			φ260			φ330	
K6		12			15			10			10	
K7		φ255			φ285			φ365			φ470	
K8		20			20			30			30	
K9		φ300			φ330			φ425			φ550	
K10		66			75			85			195	
K11		18			20			32			45	
K12		φ280			φ310			φ395			φ510	
K13		16-φ13.5			24-φ13.5			24-φ17.5			24-φ22	
K14		φ140			φ160			φ200			φ280	
K15		12-M16×25			14-M20×32			14-M24×36			15-M30×48	
K16		φ16×10			φ20×20			φ24×25			φ30×35	
C1		φ235	φ215	φ200	φ265	φ235	φ200	φ300	φ235	φ200	φ350	φ300
C2		M12×25	M12×25	M12×25	M16×30	M12×25	M12×25	M16×30	M12×25	M12×25	M16×36	M16×30
C3		φ55	φ42</									