

Lindsey u3a

# Magazine

Quarterly Edition No. 107 (April 2026)

**u3a** learn,  
laugh,  
live



U3a Knitting Group with a selection of their knitted hats for the YMCA and homeless

## Features

- ▶ 'Loving Bread and Cheese' by Adam O'Meara
- ▶ Talk on Lincoln Castle by Vic Hughes
- ▶ 'Bodyguard the Musical' Theatre group visit
- ▶ Saltaire Bookmarks, volume 2



Members of Sustainability Group visiting the waste facility



Members of the Walks Group on Dunston walk & taking a break at a rest area with information phone box requesting donations for Kenyan farm.



# Notes from the Editor



Welcome to the April 2026 edition of the Magazine.

In this edition we feature Our Chairman's Annual report and details of our Committee. Also we include accounts of our general meetings including a presentation of what we can all do to achieve the UN's Sustainability Development Goals and another on Artisan Breads and Cheeses. There are also interesting articles from our Family

History and Gardening groups and a report on 'Bodyguard the Musical' theatre show. There is plenty to read!

We continue to try to provide a varied and interesting magazine for members recounting the fascinating meetings, group visits and activities throughout the year. I welcome any new articles from any member that may have had a notable experience or visit.

Do remember to visit our excellent website for regular updates of events & group activities.

I would particularly like to thank those members who have continued to contribute to the magazine and my proof readers team of Dawn Bowskill & Jenny Porter. I would like to invite general members to contribute to the magazine if they have an item that may be of general interest, **it is your magazine.**

The deadline for the July 2026 magazine is 5th June 2026. Contact

details are: Geoff Sherman

email: [lindseyu3a.editor@gmail.com](mailto:lindseyu3a.editor@gmail.com)

*Geoff Sherman*

Lindsey u3a Website  
[www.lindseyu3a.org.uk](http://www.lindseyu3a.org.uk)

Our new webmaster: Julie Guest  
Email: [jguest343@gmail.com](mailto:jguest343@gmail.com)

## Contents

Topic	Page
Editorial	3
Notices: Meeting schedule Chairman's Annual Report u3a Annual Holiday u3a Summer Lunch Welfare contact details	5
Group news	8-18
Articles:	
'Sustainability is King' January General Meeting	19
'Loving Bread and Cheese' by Adam O'Meara	20
Talk on Lincoln Castle by Vic Hughes	21
Talk by Danny Wells to Garden Group	22
Sustainability Group visit to Energy from Waste Plant	23
'Why was Mary at the Crown Hotel?' by Janet Freeman	24
Theatre Group visit to see 'Bodyguard the Musical',	25
Saltaire Bookmarks by Janet Freeman, vol 2	26
Committee members and duties	27
Group meetings week by week	28

# NOTICES

## Meeting Schedule 2026

April 2nd 2026	Emma Sheardown, There's no such word as CAN'T! Emma was born with cerebral palsy but has fought to achieve so much in her life and will share her story about disability inclusion
May 21st	Malcolm Ross, local historian - William Marwood - state executioner who invented the "Long Drop" method of hanging.
June 4th	Keith Hanson - 'Queen Elizabeth II'
July 16th	Piers Morrell - 'Behind the scenes at a Coronation '

## Chairman's Report 2025-2026

I have enjoyed the honour of being your chairman for the last 12 months. I have had the privilege of chairing a conscientious, enthusiastic and hard-working committee and of introducing some really good speakers at well attended meetings.

As well as an increase in membership generally, we have seen record numbers of members attending the general meetings. This reflects our having some excellent speakers but also, I believe to the open, friendly atmosphere we have created at the meetings. So, thank you to the Greeters who have made the new members welcome, and to the volunteers who have provided us with refreshments each month. And thanks to you for your attendance each month.

Also worthy of mention are those group leaders who are in the Welton room each month with Cathy and her book table. There is always a buzz in the Welton room which has its own great atmosphere. Of course, advertising helps bring people in, but it is what we are and what we do that keeps you.

Thanks to all the Group leaders who are the backbone of the organisation, giving us the opportunity to meet like minded folk,

and to visit interesting and entertaining places and events. Several groups have handed over to new leaders this past year. We are really pleased that the Theatre group and the Annual Holiday are continuing with new leaders as well as Bridge, Knitting and one of the Book Groups. Bonjour to our new French group. The venue for Summer lunch has closed, but efforts are being made to ensure that it will continue.

The finances remain healthy under the watchful eye of our treasurer, helped by the increased number of members committing to GiftAid.

You may have noticed that we are trying to move forward with using the internet to validate your information and do away with renewal forms, also introducing bank card reading to reduce the number of cheques. The web site continues to provide a great reference point for all the information you need, thanks to our new Web Master who is proving more than equal to the task. It is backed by a superb magazine providing a summary of all the happenings at meetings and on visits, a really good read.

The latter part of my year has been quite emotional. As well as handing over the chair, Jane and I are leaving the area. It is the end of over 12 years serving on your committee. We have gained many friends who we shall miss, and we have been touched by the number of good wishes we have received since we made it public.

I am passing the baton to the next chairman, and I am confident that Lindsey u3a will continue to thrive given the strength of your committee, the enthusiasm of the group leaders, and the support and commitment of the membership.

So thank you all for your support for the organisation as well as for me as your chairman, and not least for laughing at my jokes!

I wish you all health and happiness in the future.

**Sid Miller**

**Honorary Chairman 2025-2026.**

## **NOTICES**

The following members were elected to serve on the Committee.

**Officers:** Luke Pickering - Chairman  
Malcolm Thompson - Vice Chairman  
Malcolm Thompson -Treasurer  
Jenny Porter - Secretary

**Committee:** Janet Freeman, Julie Guest, Rosey Thompson, John Saynor, Tricia Barnes, Alan Barnes and Sheila Nash.

### **u3a Summer Holiday**

Our annual summer holiday is to Newport on 15 June 2026. We will be visiting Cardiff, Cardiff Castle, the Royal Mint Attraction, the Rhondda Heritage Park, Monmouth (hopefully without the need for wellies) & Wye Valley & Forest of Dean.

The cost is £599pp which includes all entry costs. There are a few single rooms left. Booking forms and full itinerary are available on the Lindsey U3A website.

All info to group leader Pam Simpson 11 Byron Ave Lincoln LN2 4DX [pam7888@aol.com](mailto:pam7888@aol.com)

### **Lindsey u3a Summer Lunch**

Friday, 10th July, 2026 at Lincoln Rugby Football Club.  
Menu available and booking open from Thursday, 2nd April, 2026 at the General Meeting. Cost: 2 courses £22; 3 courses £28

### **Welfare**

Sheila Nash is our new Welfare contact. If you know of anyone who is ill, had a bereavement or is simply having some difficulties or if you think a card from the Committee would be welcome, then let Sheila know and she will send a suitable message.

Her contact details are Tel: 07709544145 and email: [thenashes60@hotmail.com](mailto:thenashes60@hotmail.com)

# GROUP NEWS

## ARCHITECTURE GROUP



We are a large and friendly Group, who are interested in the buildings and settlements of the local area. We arrange talks in the winter months and trips to towns, villages and individual buildings once the weather gets warmer. We have a varied programme which includes the ancient and modern, usually with knowledgeable local guides. Our tours often finish in the local pub or teashop!

We meet on the third Thursday of the month, generally at 10.30am. Some of our visits do have limited numbers and we have Booking Forms at the General Meetings where you can put your name down.

### Programme

24 April Coach trip to Beverley. Joint with Visits Group.

7 May Tour of Humberston Fitties.

11 June Visit to Aubourn Estate, with Afternoon Tea.

Luke Pickering, group leader

## ART GROUP



At our art group, members can draw and paint together in a hall location. The group is open to all abilities and complete beginners. So if you have ever wished to give it a go now is your chance!

We meet on the 4th Thursday of the month at the Welton Room. Examples of recent meeting projects include: still life designs, tonal studies in pencil, charcoal & watercolour, watercolour landscapes, figure drawing, flower painting, exploring pen and wash techniques, starting out in pastels. Please contact me for further information.

## **GROUP NEWS**

Geoff Sherman, group leader

### **ART APPRECIATION**

Art Appreciation Group members would welcome new attendees at their meetings. Activities include members' presentations on artists and exhibitions attended, guest speakers, visits to art galleries. Meetings are informal and are held in members' homes unless an outing has been arranged. All meetings take place on the third Monday of the month at 2 p.m. Programme:

April 20th: Bring a book illustration to talk about.

May 18th : Turner versus Constable .

Contact Elizabeth Wilson - group leader



### **BOOKLOVERS GROUP**

We are a very friendly group and meet at 1.45 p.m. on the third Wednesday in a members home, with a cuppa and bickies.

Jan Benson. Group Leader Email [janbenson01@hotmail.com](mailto:janbenson01@hotmail.com)

### **BIRD WATCHING**

The group of Bird Watchers is run by the Cliff Villages u3a group on the third Wednesday of the month and they would welcome new members. You will need to be prepared to drive a little way as many sites are on the coast. If you would like more details, please contact via [www.cliffvillageslincoln3a.org.uk](http://www.cliffvillageslincoln3a.org.uk)

## GROUP NEWS

### BOOKWORMS - BOOK GROUP

We are a small friendly group, meeting each month in one another's homes to discuss a book accompanied with refreshments.



Each year, as a group, we select a wide range of books including contemporary novels, the classics, biography and non-fiction. Individual members decide whether to obtain their books from the library service, use electronic downloads or purchase a hard copy.

For further information please contact: Dawn Bowskill - group leader: [dawn.bow44@outlook.com](mailto:dawn.bow44@outlook.com)

### CANASTA GROUP

Have you ever played or wish to learn how to play? Brian has been playing Canasta since the 1960's and is willing to teach new members how to play. The game can be played by 2,4 or 6 players on one table and can last for 2 hours or more or finish at a set time.



Brian is thinking of setting up a new group if there is enough interest. If you are interested please contact Brian Siddown indicating your preferred meeting day.

### CIRCLE DANCING

Circle Dancing is open to everyone. No experience is necessary as all the dances are taught first. No partner is needed as we all join hands and dance together. The circle of dancers is welcoming and supportive and we can all have fun and make friends while learning dances to



## **GROUP NEWS**

music from around the world. We always say 'There are no mistakes in Circle Dancing - only variations'.

We meet on the third Wednesday in the month from 10.00 - 11.30 at Moorland Methodist Church, Skellingthorpe Road. There is a small charge to pay for the hire of the hall. For further information please contact: Margaret Doughty revmd@gmx.co.uk

### **COFFEE MORNING**

Held at the Scothern Garden Centre on the 4th Thursday of every month. Excellent coffee and tea plus the best scones ever! Please come along and enjoy a chat and maybe stop for lunch. It is important that you advise me if you wish to attend as we have to advise the cafe beforehand.

Luke Pickering,

### **COMPUTERS FOR ALL**

I would like to encourage more members to join our enthusiastic group to learn more from their computers. During our planned monthly meetings we explore the needs of Apple iPad users, along with those using Windows and Android devices.



The meetings take the format of discussion and practical help, giving guidance to members using their different devices. We aim to sort out each other's problems along with exploring and obtaining more use from your apps, for example users might want to:-

- Take a screenshot
- Use Control Centre for volume, brightness and recording 'YouTube'
- Moving your apps and put your important apps on the dock

## GROUP NEWS

- Solving iPad problems by closing apps and switching off
- Are those Apps not working right for you?
- Are you having problems with your emails?
- Do you feel safe browsing the web?
- Would you like to improve your photos?
- How to set up a Google account?
- Plus much more

This non-technical approach is giving group members more confidence in using their devices so they can now show the grandchildren how to do it!!

The group welcomes new members of all levels of interest in technology who would like to further their knowledge and hopefully help others to benefit from what they have learnt. If you would like to join our happy group please email me on [perrenialgardner@gmail.com](mailto:perrenialgardner@gmail.com) or just come along to one of our meetings, which are held at the Welton Village Hall on the 2nd Monday of the month at 2 p.m., see the next few dates below.  
April - 13th, May - 11th, June - 8th

For further dates see our website.

I look forward to seeing at our next meeting..

**Mike Kirkby, Organiser**

### DUPLICATE BRIDGE

Duplicate Bridge Group meets every Thursday  
1.00 p.m. at Old School Hall, Mill Hill Nettleham.

**Cathy Platt** - group leader  
[plattcathy58@gmail.com](mailto:plattcathy58@gmail.com)



### FAMILY HISTORY

We report each month on our own individual research, and pool our knowledge and experience to help with any 'brick walls'. Related topics are discussed, such as housing, work and migration,



## GROUP NEWS

and also storage and information retrieval on a practical level. Meetings are on the 3rd Monday of each month in members' homes.

Janet Freeman - group leader  
[janethfreeman.12@gmail.com](mailto:janethfreeman.12@gmail.com)

### FRENCH CONVERSATION -

Bienvenue au Groupe de Conversation en Français!

This is an informal, mixed ability group. No-one is expected to be fluent. You just need to enjoy and appreciate French language and culture. Here, we can practise some French and develop confidence in speaking, reading and listening; to swap anecdotes about French life and culture - books, films, travel etc; and about ourselves. Whatever we can bring to the table - or "à la table"!

Numbers are limited, as the group meets in each other's homes: the second Wednesday of each month, 10 o'clock - noon.

Alan Gidney group leader [fitzal@hotmail.com](mailto:fitzal@hotmail.com)



### GARDEN GROUP

The Garden Group meets on the 4th Tuesday of the month. Meetings are held in Welton Village Hall at 2 pm with an entrance fee of £4 which includes refreshments. There are garden visits in February and the summer months.

#### Programme

28 April - Visit to Bolham Manor near Retford

26 May Visit to Bardney Manor, Bardney

Please view details of further meetings & visits at the Welton Room at general meetings

Garden group leader: Louise Kevill

[gardengroup.lindsey@gmail.com](mailto:gardengroup.lindsey@gmail.com)



## **GROUP NEWS**

### **INDOOR BOWLS**

This is a group open to anyone who would like to give bowling a try or just come along and have a roll-up. We use the facilities at Dunholme Indoor Bowls Club and they are happy to provide shoes as you are not allowed to wear your own ordinary shoes on the carpet, and bowls that they have for those starting up. Bowls come in many sizes and weights so you can try different ones until you find ones you are comfortable with. For new bowlers free tuition will be given for the first three Tuesdays. The bowls group meet for a fun game every Tuesday afternoon at 2 p.m. ready to start bowling at 2.30 p.m. for two hours. All new members are welcome. Rink fees are £5 for two hours (£4 for bowls club members). Teas and coffees are available for £1 each.



Jane Guy - group leader

### **JEWELLERY GROUP**

This group is an opportunity for people who have an interest in jewellery making and associated crafts to come along, enjoy a good chat, learn about this interesting hobby and make some wearable pieces. Our group is currently full however please contact Chris Saynor or at [saynor\\_chris@hotmail.com](mailto:saynor_chris@hotmail.com) for further information.

### **KNITTING GROUP**

This group is a chance for people with an interest in Knitting and Crochet to meet. All levels welcome, any help needed can be given to new knitters. Just come along and enjoy a good chat and a chance to swap some ideas.



## **GROUP NEWS**

The Group meet at the Methodist Church Welton on the 2nd Tuesday of the month at 10.00 a.m.

Group contact: Ann Baker      [ann.baker10@btinternet.com](mailto:ann.baker10@btinternet.com)

### **QUIZ GROUP**

On Thursday 16th April at 2.00 p.m. in Welton village hall we will be holding a Quiz with a Difference. To sign up for the quiz you should make your way to the Welton Room on Thursday General meeting.

Co Group Leaders Luke Pickering   Malcolm Thompson

### **SCRABBLE**

Witham u3a have Scrabble meetings on the 2nd Tuesday of the month from 13.30 - 15.30. They meet in Cherry Willingham. 1 New Crescent LN3 4AJ. (New Crescent is off High Street, between the Millennium Hall and Church Hall). They would welcome members from Lindsey u3a  
Organiser: Thelma Britz - Email: [thelmabritz@gmail.com](mailto:thelmabritz@gmail.com)

### **SHORT WALKS GROUP**

This group meets on the second Monday of each month at about 10.15 a.m. for a 10.30 a.m. start. We usually have easy walks of 2-3 miles taken at a leisurely pace, followed by a visit to a suitable place for refreshments and to discuss future walks. Any u3a member is welcome to join us, either on a regular basis or just occasionally. Further information from Janet Paley

### **THEATRE GROUP**

Our thriving Theatre Group has two new leaders, Julie Guest and Elizabeth Walker, who have recently taken over the reins from Sid and Jane Miller. They can be found in the Welton Room before each general meeting.



## GROUP NEWS

The first outing of 2026 took us to Sheffield to see *The Bodyguard - The Musical*, which will be followed in May with a trip to Hull to see *Fawlty Towers, the Play*.

Then we will have our annual visit to the Gilbert & Sullivan Festival in August to see the National G&S Opera Company's production of *The Mikado* in Buxton. Tickets were snapped up very quickly for this trip, but you can still add your name to the Reserve List. Booking has also recently opened for Andrew Lloyd Webber's *Cats* at the Hull New Theatre in October, and Elizabeth and Julie are already on the lookout for productions to enjoy in 2027!

For more information contact Julie or email [julie.guestu3a@gmail.com](mailto:julie.guestu3a@gmail.com)

### SUSTAINABILITY MATTERS GROUP

#### The Environment's Friends

This group, formerly the Trojan Mice, normally meets on the second Monday of the month in the Waitrose Community Room in the Nettleham Rd store. We meet at 3.15 pm and our meetings generally last around 90 minutes. Refreshments are available from the cafe.



We are a friendly, lively group of 30+ members and are working towards a member-led programme where topics are decided by the group and then members with a particular interest in the subject put together a programme of one or two sessions comprising a mix of presentations, discussion, invited speakers and local visits.

Between April and June this year we are planning the following:  
Monday 13 April 3.15 pm at Waitrose Community Room

A talk by Su Colman, a volunteer speaker from the Nettleham Woodland Trust which manages Ashing Lane Nature Reserve in Dunholme.

Monday 11 May To be confirmed. Further details will be posted on our group page on the Lindsey U3A website.

Monday 8 June at Ashing Lane Nature Reserve. Meeting time to

## GROUP NEWS

be confirmed.

We will have a guided walk through the Nature Reserve where, in addition to providing the community with a new leisure amenity, new habitats have been created, attracting a greater variety of wildlife into the local area.

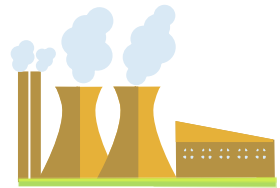
The group has a Recycling Hub at all u3a general meetings which provides a one-stop drop-off point for blister packs, spectacles, household batteries, water filters, printer cartridges, light bulbs and postage stamps. Rest assured that all donated items are recycled responsibly.

For further information please contact: Heather  
heatherfrier@hotmail.com or Julie [julie.guestu3a@gmail.com](mailto:julie.guestu3a@gmail.com)

### VISITS GROUP

The Visits Group has a programme of outings being prepared.

#### Programme



Visit to the finest collection of regimental Uniforms on Parade; a tour of the Mr M C Ten uniform collection at Doddington Hall, Lincoln 14th April 2026 from 2pm.

24 April Coach trip to Beverley. Joint with Architecture Group.

Watch out for further information on the website and at General Meetings.

Leaders : Rosey Thompson , Email;  
[roseythompson61@gmail.com](mailto:roseythompson61@gmail.com) and Malcolm Thompson.

# GROUP NEWS

## WALKING GROUP

Group meets once a month on the first Monday. Walks are of about 5 miles at a gentle pace usually completed by 1 p.m. Programme is on display at the monthly meetings and is regularly circulated via email. No need to sign up in advance for a walk just be at the listed meeting place at 9.45 a.m. for a 10 a.m. start. Contact the group leader or the monthly meeting contact (Janet Freeman) for full details. Kevan Chippendale, group leader kevanchipp@gmail.com



### Potential New Groups

We are pleased to announce that some potential new groups may be set up soon. Please look out for further information in the Welton Room and on our website.

### Scrabble

A new group has been set up to play Scrabble. They will meet at Nettleham once a month. Day TBC. Maximum of 6 players  
Group Leader Diane Hillas

### Wellbeing, Aromatherapy & Herbal Medicine

A group meeting primarily for those who have little knowledge of the subject. Maximum of 6 meeting at the leader's home one afternoon a month. Day TBC  
Group Leader Jo Johnston josephineljohnston@icloud.com

Are you interested in Table Tennis?

A new group is setting up in Welton Methodist Chapel. meeting 4th Thursday of the month. Group Leader Rose Roberts

## 'Sustainability Is King' January General Meeting

We started the New Year with a return visit from Clive Wilson and his team from United Nations Association - Greater Lincolnshire (UNA-GL). It was their previous presentation, back in January 2024 that inspired the creation of our own Trojan Mice group. The fundamental purpose of UNA-GL is to encourage and support new ideas and actions from people across Greater Lincolnshire that help achieve the UN's 17 Sustainable Development Goals. (which can be viewed on the Trojan Mice page of our website.) Their thought provoking presentation included a review of the progress made to date, along with examples of global and local sustainability projects. One inspiring example was the Green Power Education Trust which recently hosted an event at Blyton Park Lincolnshire. Young people raced electric cars they had built themselves, gaining hands-on experience of

engineering, technology and sustainability. The ambition is for every school in the UK to take part.

The team acknowledged that it is easy to feel pessimistic when considering global challenges such as climate change, conflict and pollution. However, they emphasised that positive change is possible if everyone takes action, no matter how small, whether individually or together. One slide summed this up perfectly. "*If not you, then who? If not now then when?*"

The talk concluded with a lively discussion on the locally emotive topic of solar panels. Among the surprising facts shared was that France has mandated for solar panels to be installed over all new and existing large car parks (80+ spaces). Now, that is certainly an idea we could all get behind!

**Julie Guest**

## 'Loving Bread and Cheese' by Adam O'Meara February General Meeting

Our February General Meeting hosted an audience of 111 members and 15 guests. All were eager to hear our Speaker, local baker and cheesemonger, Adam O'Meara. His "bread + cheese" van is a familiar sight in the Welton Village Hall car park on Farmers' Market days.

He began his talk by telling us about himself. Around six years ago, former University lecturer Adam was ready for a change of direction. Coming from a family who have been involved in food retail, hospitality and catering, it was no surprise to find that Adam chose his own way into the food industry. Over the past five years he has become the proprietor of three businesses. He continued the talk with brief descriptions of his products. At his micro-bakery in the Allenby Road area of Lincoln, sourdough bread is made by slow fermentation of the dough for 24 hours plus. This allows time to develop proteins and give more nutritional benefits than other mass produced methods. Croissants and pastries are made with whey butter, which

is a by-product of cheese and has a low fat content. Adam and his niece run the Cheese Society on St Martin's Lane, which specialises in British and Continental artisan cheeses. We learnt about the various textures, ingredients and properties of several types.

Trays containing samples of delicious soft sourdough bread topped with a piece of cheese were passed round, to the delight of the audience. What a treat!! Without waiting for a designated Q&A session, hands were going up all over the room as members were keen to find out more about bread + cheese.

In conclusion, Adam was pleased to inform us that the van now covers an extensive area of Lincolnshire, stopping for an hour or more at village locations. After Sid had thanked him for his excellent and informative talk, members of the audience were able to buy from the supply of bread, cheese and pastries which Adam brought along to the Meeting. All very tempting!

**Jenny Porter**

## Talk on Lincoln Castle by Vic Hughes for Architecture Group

**W**ell known local historian and guide, Vic Hughes, returned by popular request to tell us about Lincoln Castle, in his own inimitable style.

He talked about its origins as a Norman Fort, established by William the Conqueror's brother to control the area and its role in major events, including the Battle of Lincoln. Vic described the various towers around the walls, which included Lucy Tower with its unmarked gravestones and also Cobb Hall where executions took place and thousands gathered to watch the gory spectacle.

His enthusiasm for the Old Prison was infectious. We

learnt how the prisoners were kept separate from each other at all times, even when allowed out for very brief exercise or to go to the Chapel. Lincoln Castle Chapel, with its layout ensuring prisoners could only see the priest, is unique and well worth a visit.

Vic illustrates his talks with photos and illuminates them with numerous anecdotes. If you haven't heard him, (and I recommend that you should!) you will have the opportunity to do so next year as he has agreed to come back in January 2027.

**Luke Pickering**



Former Lincoln Castle Prison

**Talk by Danny Wells to Garden Group  
on Tuesday 28 October 2025**

**D**anny is a history enthusiast and qualified historian and history teacher. His talk was about the social history of the English and gardening.

He began his talk by telling us that, in the 17th century, John Evelyn began to write a history of the English garden, but abandoned the project because he found the subject to be too large. Danny was able to give us an overview of gardens; its variety of uses: sacred, spiritual, meditative or botanical; its different sizes: cottage, walled or landscaped; formal or informal. Initially

gardens were used by the wealthy and not until 19th century were gardens created for the general public; the first being opened in Derby in 1840. Garden designs were influenced by gardens in other countries such as China and Japan. Danny referred to 'Capability' Brown and Gertrude Jekyll and how formal gardens

became more informal and even a little wild. Charles Darwin's research and ideas influenced horticulturalists and growing techniques. New technologies changed ways of working and cultivating, such as glass manufacture for greenhouses, and progressing



to lawn mowers, which could be used by women gardeners.

Danny gave us an excellent summary of his in-depth knowledge of the subject, giving us a very interesting history of the English garden.

**Louise Kevill**

## Sustainability Group members visit to the North Hykeham Energy From Waste Plant

Early this morning I put out my grey bin and I now know what happens to all the non-recyclable rubbish inside. After a trip with the Trojan Mice Environment group to the North Hykeham Energy From Waste Plant I know that it gets collected along with lots of others, taken to a central collecting hub before being transported in vast bulk to the incinerator.

On arrival we had to reverse park so that in an emergency we could all exit quickly and safely as this is an advanced industrial site. Sally, our guide warmly welcomed us and escorted us to the classrooms. Education is critical to the effective management of our waste now, and in the future. We need to be informed of how to separate our waste so that paper can be recycled, garden clippings can be turned into compost (if you don't make any in your own garden - and why don't you?) and in the future our food waste (that is if you generate any - and why do you?) will be safely converted into Biogas. There is a lot of helpful information on the [recyclenow.com](http://recyclenow.com) website. Also, check for information at the

Sustainability Group (formerly Trojan Mice) table at monthly meetings. Generally, people are very compliant and follow the simple rules of;

- Check
- Wash & squash
- Remove lids and caps
- No grease grub or litter

Then we walked through to the operations room where, like a scene from a sci-fi movie we could see the waste coming in and then a man in a huge control chair in our room remotely sorted it and loaded it into the furnace. The glass was so thick that we couldn't smell or hear anything or feel any heat. From there we walked along the viewing platform beside the massive structure to see how the heat was turned into steam and energy and how the water and air was cleaned of impurities, made into ash and clinkers, and sold on to the construction industry.

It was all very impressive and as we all walked back to our cars full of determination to be better waste managers I was struck by how incredibly clean the site was.

**Heather Frier**

## Why was Mary at 'The Crown Hotel', Lyndhurst? A Family History story by Janet Freeman

**M**y 2x great grandmother, Mary Preece, was born in 1843 to farm labourer William and his wife Mary in Kingsland, Herefordshire. In 1864, she married Thomas Duffell, also a farm labourer, in King's Caple, Herefordshire, and they had four children there together. However, by the mid-1870s the family had moved to Llanbadock, near Usk, in Wales, which was where Thomas died of bronchitis at the early age of forty-one in 1880. On the 1881 census Mary was working as a washer woman, still in the Llanbadock area, but by the following census in 1891 had moved into Usk, living as a general domestic servant on Bridge Street, next door to the Cross Keys Inn. Six years later, Mary died in 1897 aged fifty-four, not in Usk, or Wales, or Herefordshire, but at 'The Crown Hotel', in Lyndhurst, Hampshire. This conundrum has puzzled me for a very long time, but a connection is finally emerging, albeit by inference rather than definitive proof. Returning to Bridge Street, Usk, on the 1881 census, next door to where Mary Duffell would be living by 1891, was widow Mary Jones, originally from Raglan, running a successful

grocery and drapery business. This had been built up by her provision merchant husband James Jones, who had died in 1879, leaving her almost £6,000. The next time we encounter Mary Jones is on the 1891 census as proprietor of 'The Crown Hotel' in Lyndhurst! Here we must imagine that at some time within the previous decade the two Marys must have met and formed a friendship, after all their dates of birth, marriage and bereavement were virtually the same.

The hotel was thought to have been built around 1600 originally, but Mary undertook an extensive refit in 1896, and perhaps it was after this that Mary Duffell was invited to come. I will probably never get to know exactly when for sure. 'The Crown Hotel' was still in the Jones family on the 1921 census, although Mary herself had died in 1917 in Bournemouth, Dorset. Mary Duffell was buried in Lyndhurst Cemetery far away from her family and her roots.

[ 'The Crown Manor House Hotel', as it is now known, can be found on [Booking.com](https://www.booking.com) ].

**Janet Freeman**

## Theatre Group visit to see 'Bodyguard The Musical'

When Rachel Marron, a singing star, is threatened by a stalker, her manager employs Frank Farmer, a Special Secret Agent more used to guarding presidents than divas. Conflict inevitably ensues when haunted by a previous mistake Frank is over zealous with his security methods, while Rachel resents and resists his heavy-handed approach and the impact on her freedoms. Add in a jealous sister, who hoped for stardom herself, and a young son who loves the arrival of these strong men in his life and the plot is set.

Inevitably hostility is replaced by romance, and all is well until Frank nearly dies when he saves Rachel, by taking a bullet meant for her. Realising they cannot be together Frank is reassigned and they part company.

I enjoyed the show enormously. It was a very slick production with wonderful costumes, clever scenery and a playlist of familiar songs including



I Wanna Dance with Somebody, Saving All My Love and One Moment in Time.

Andy Garcia and the whole cast were full of enthusiasm. Sidonie Smith, who played Rachel had a stunning voice and Prince Conteh, as her young son Fetcher, was clearly having the time of his life.

The show ended with a powerful rendition of I Will Always Love You, followed by an invitation to stand up and join in. We did, and left the theatre feeling thoroughly uplifted.

**Prue Chadderton**

Twenty years later, in July 1898, Sylvester Toothill appeared before the Bradford Bankruptcy Court as one of the owners of 'Baldwin and Toothill' which supplied worsted spinners to textile industries abroad. They had a deficit of £9,921-6s-6d which Sylvester blamed partly on alterations in the American tariff laws.

Maria often mentioned 'the Colonel' in her talk to us, a sort of superintendent to Titus Salt who lived in a big house with a lookout tower. My bookmark character was Caroline Ann Hill (1827-1904) his wife, and mother of their four children who were all born in British India. She was born Caroline Ann Milner in Calcutta and firstly married John Hepburn, a gunner in the artillery, in 1845 at Fort William, Calcutta. He was Sergeant of the Allahabad Magazine at the time of his early death on 9th March 1852. Caroline then married Thomas Henry Sowerby Hill, nine years her senior, on 5th July 1852, a Conductor of Ordnance in H.M. Indian Army, although never referred to as a colonel. The couple had two daughters and two sons between 1853 and 1861, all born in Bengal, but by 1871 they were in Saltaire living a very different life. Thomas Hill died in 1880, and later

censuses show Caroline being of independent means living with her grown up children; in 1891 she was at Stratton, near Cirencester, Gloucestershire, with son William Henry and his family, and in 1901 at Outwell, Cambridgeshire, near her daughter Emily Caroline and her husband, both of whom were head teachers. She died there in 1904.

Mary Binns (1854-1896) was one of twelve children born to tailor Benjamin Binns and his wife Ann Brown, initially in Haworth, but later in Saltaire. Mary married Edward Alderson in 1877, and by 1891 had corner premises on Victoria Street and Titus Street where Edward was a tailor, draper and wool buyer. Several of Mary's sisters married then emigrated to New York State, USA, however, the most interesting thing about this family was their connection to Haworth. Ann Brown's sister Martha was servant to the Bronte family at the Parsonage from 1839, later becoming housekeeper and taking on nursing responsibilities. Their father, John Brown, was a stonemason who carved many of the gravestones in the churchyard and was village sexton for twenty years. He knew Branwell Bronte sufficiently well to have his portrait painted by him.

## LINDSEY u3a COMMITTEE MEMBERS & DUTIES

<b>Chairman</b>	Luke Pickering	
	<a href="mailto:lukep@lahestates.co.uk">lukep@lahestates.co.uk</a>	
<b>Vice Chairman</b>	Malcolm Thompson	
	mjt0511@btinternet.com	
<b>Treasurer</b>	Malcolm Thompson	
	mjt0511@btinternet.com	
<b>Secretary</b>	Jenny Porter	
	jennylporter47@btinternet.com	
<b>Membership</b>	Tricia Barnes	
	<a href="mailto:memlu3a@gmail.com">memlu3a@gmail.com</a>	
<b>Groups Organiser</b>	Rosey Thompson	
	<a href="mailto:roseythompson61@gmail.com">roseythompson61@gmail.com</a>	
<b>Speaker Finder</b>	Luke Pickering	
	<a href="mailto:lukep@lahestates.co.uk">lukep@lahestates.co.uk</a>	
<b>Publicity</b>	Sheila Nash	
<b>Hall Committee Liaison</b>	Janet Freeman	
	janethfreeman.12@gmail.com	
<b>Kitchen/Door Rota</b>	Joy Smith	
<b>Magazine editor</b>	Geoff Sherman	
	<a href="mailto:lindseyu3a.editor@gmail.com">lindseyu3a.editor@gmail.com</a>	
<b>Committee Members</b>	John Saynor, Julie Guest, Sheila Nash, Tricia Barnes, Janet Freeman, Rosey Thompson, Alan Barnes	
<b>Webmaster</b>	Julie Guest	
	<a href="mailto:jguest343@gmail.com">jguest343@gmail.com</a>	

## Group Meetings

### Week One of the Month

<b>Monday</b>		
9.45 a.m.	<b>Walks</b>	Kevan Chippendale kevanchipp@gmail.com Walks of about 4 to 6 miles
<b>Tuesday</b>		
9.30 a.m.	<b>Jewellery Making &amp; crafts</b>	Christine Saynor <a href="mailto:saynor_chris@hotmail.com">saynor_chris@hotmail.com</a>
2 p.m.	<b>Indoor Bowls</b>	Jane Guy -
<b>Wednesday</b>		
		There is nothing planned on this day
<b>Thursday</b>		
9.30 a.m. to 12 noon	<b>General Meeting in Welton Village Hall</b> Welton Village Hall is at 51 Ryland Road, Welton, LN2 3LU Coffee/tea at 9.30, Speaker at 10.30	
1.45 p.m.	<b>Duplicate Bridge</b>	Cathy Platt plattcathy58@gmail.com Meetings at Old School Hall, Mill Hill, Nettleham LN2 2PE
<b>Friday</b>		
There is nothing planned on this day		

## Week Two of the Month

<b><u>Monday</u></b>		
10.15 a.m.	<b>Short Walks</b>	Janet Paley Walks of about 2-3 miles
2 p.m.	<b>Computers for All</b>	Mike Kirkby <a href="mailto:perrenialgardner@gmail.com">perrenialgardner@gmail.com</a> Meetings held in the Welton Room. Welton Village Hall
3.15 p.m.	<b>Sustainability Matters</b>	heatherfrier@hotmail.com , Julie jguest343@gmail.com. Meetings held at Waitrose Community Room at the Nettleham Rd store
<b><u>Tuesday</u></b>		
10 a.m.	<b>Knitting</b>	Meetings held in the Methodist Church, Welton
13.30 p.m.	<b>Scrabble</b>	Witham u3a , 1 New Crescent LN3 4AJ. Cherry Willingham.
2 p.m.	<b>Book Group (Bookworms)</b>	Dawn Bowskill - dawn.bow44@outlook.com Meetings held at members' homes
2 p.m.	<b>Indoor Bowls</b>	Jane Guy -
<b><u>Wednesday</u></b>		
10 a.m.	<b>French Converstiaon</b>	Alan Gidney fitzal@hotmail.com
<b><u>Thursday</u></b>		
1.45 p.m.	<b>Duplicate Bridge</b>	Cathy Platt plattcathy58@gmail.com Meetings at Old School Hall, Mill Hill, Nettleham LN2 2PE

**Friday** There is nothing planned on this day

<b>Week Three of the Month</b>		
<b><u>Monday</u></b>		
10 a.m.	<b>Family History</b>	Janet Freeman janethfreeman.12@gmail.com The Family History Group meet in member's homes
2 p.m.	<b>Art Appreciation</b>	Elizabeth Wilson <a href="mailto:elizabethwilson52@gmail.com">elizabethwilson52@gmail.com</a> Meetings held at a member's home
<b><u>Tuesday</u></b>		
2 p.m.	<b>Indoor Bowls</b>	Jane Guy -
<b><u>Wednesday</u></b>		
10 a.m.	<b>Circle Dancing</b>	Margaret Doughty revmd@gmx.co.uk 10-11.30a.m.at Moorland Methodist Church Hall, Skellingthorpe Road, LN6 7RB
1.45 p.m.	<b>Booklovers Group</b>	Contact Jan Benson <a href="mailto:janbenson01@hotmail.com">janbenson01@hotmail.com</a>

	<b>Bird Watching</b>	please contact via <a href="http://www.cliffvillageslincolnu3a.org.uk">www.cliffvillageslincolnu3a.org.uk</a> ?
<b><u>Thursday</u></b>		
10.30 a.m.	<b>Architecture</b>	Luke Pickering lukep@lahestates.co.uk Outdoor Visits and meetings in Welton Room
1.45 p.m.	<b>Duplicate Bridge</b>	Cathy Platt plattcathy58@gmail.com Meetings at Old School Hall, Mill Hill, Nettleham LN2 2PE
<b><u>Friday</u></b> There is nothing planned on this day		

<b>Week Four of the Month</b>		
<b><u>Monday</u></b>		
		There is nothing planned today
<b><u>Tuesday</u></b>		
2 p.m.	<b>Garden group</b>	Louise Kevill gardengroup.lindsey@gmail.com Welton Village Hall in Winter; Garden Visits in Summer
2 p.m.	<b>Indoor Bowls</b>	Jane Guy -
<b><u>Wednesday</u></b>		
		There is nothing planned today
<b><u>Thursday</u></b>		
10 a.m.	<b>Art Group</b>	Meetings held at Welton Room, contact Geoff Sherman, <a href="mailto:lindseyu3a.editor@gmail.com">lindseyu3a.editor@gmail.com</a>
10.15 a.m.	<b>Coffee Morning</b>	Scothern Garden Centre coffee shop. Contact Luke Pickering,
1.45 p.m.	<b>Duplicate Bridge</b>	Cathy Platt plattcathy58@gmail.com Meetings at Old School Hall, Mill Hill, Nettleham LN2 2PE
<b><u>Friday</u></b>		There is nothing planned today

## Group Meetings Summary Page

	Week 1	Week 2	Week 3	Week 4
Mon	<p><b>9.45 a.m.</b> 5/6 mile walk</p>	<p><b>10.15 a.m.</b> Short Walks</p> <p><b>2 p.m.</b> Computers for All</p> <p><b>3.15 p.m.</b> Sustainability Matters</p>	<p><b>10 a.m.</b> Family History</p> <p><b>2 p.m.</b> Art Appreciation</p>	
Tue	<p><b>10 a.m.</b> Jewellery Making</p> <p><b>2 p.m.</b> Indoor Bowls</p>	<p><b>10 a.m.</b> Knitting</p> <p><b>1.30 p.m.</b> Scrabble</p> <p><b>2 p.m.</b> Book Group (Bookworms)</p> <p><b>2 p.m..</b> Indoor Bowls</p>	<p><b>2 p.m..</b> Indoor Bowls</p>	<p><b>2 p.m.</b> Indoor Bowls</p> <p><b>2 p.m.</b> Gardening</p>
Wed		<p><b>10 a.m.</b> French Conversation</p>	<p><b>10 a.m.</b> Circle Dancing</p> <p><b>1.45 p.m.</b> Booklovers Group</p> <p><b>All day</b> Bird watching</p>	
Thu	<p><b>9.45 a.m.</b> <b>General Meeting in Welton Village Hall</b></p> <p><b>1.45 p.m.</b> Bridge</p>	<p><b>1.45 p.m.</b> Bridge</p>	<p><b>10.30 a.m.</b> Architecture</p> <p><b>1.45 p.m.</b> Bridge</p>	<p><b>10 a.m. Art Group</b></p> <p><b>10.15 a.m.</b> Coffee Morning</p> <p><b>1.45 p.m.</b> Bridge</p>
Fri				