

BLUERISE FLOORING

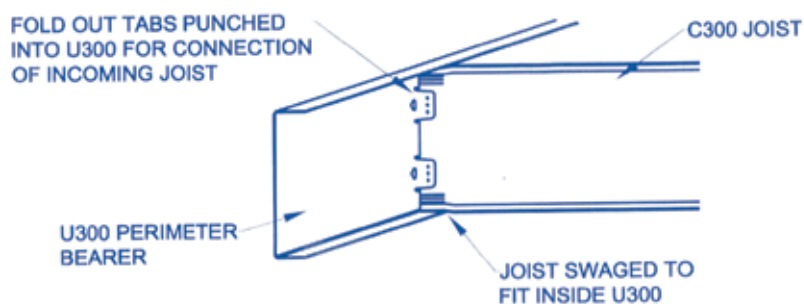
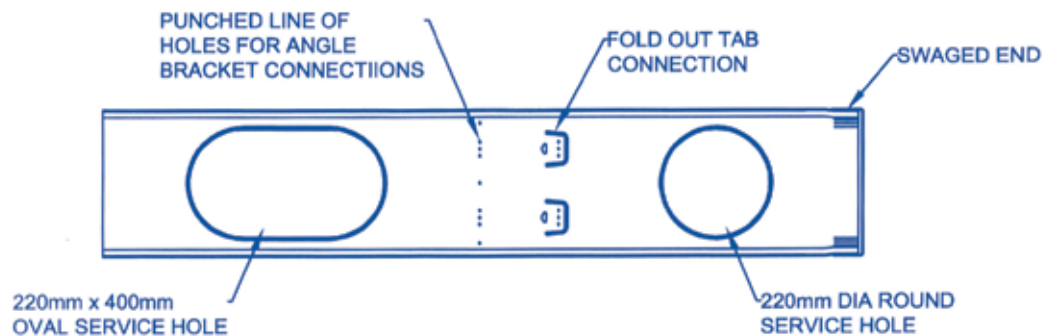
FEATURES AND BENEFITS



WHY CHOOSE STEEL FRAME SOLUTIONS

BLUERISE FLOORING

- Ease of assembly
- Market leading floor joist spans
- Optimum access for services
- Compatibility with existing building systems
- Price competitive
- Non combustible durable and impervious to termites





BENEFITS OF STEEL FRAME SOLUTIONS

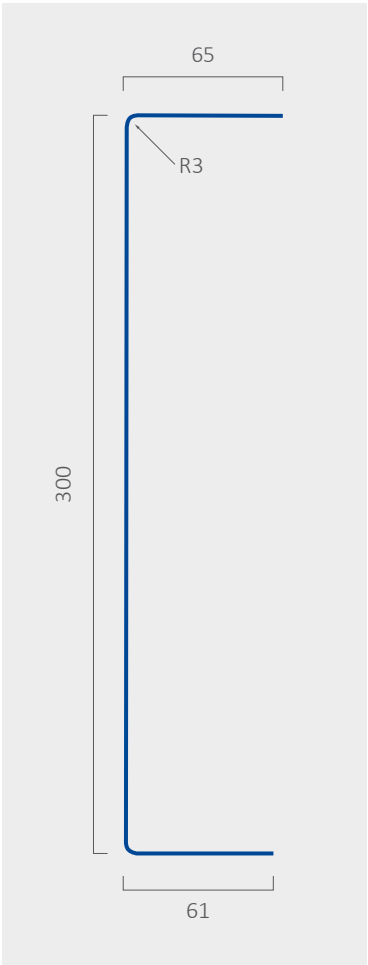
BLUERISE FLOORING

The Steel Frame Solutions floor system has many advantages over every other floor system on the market for intermediate floor systems designed for 300mm deep joists:

- The SFS joist are very price competitive especially when considering the spanning capacity.
- Steel joists are light, our C300x1.5mm joist weighs only 5Kg per meter.
- Steel joists are less affected by the environment. Steel joists wont warp, rot or rust. They are non combustible, durable and impervious to termites.
- The SFS joist is easy to assemble, all connections are provided and where possible pilot holes are pre punched.
- Pre punched holes means little or no mark out required.
- Access to services made easy by numerous large service holes.
- Joist spans can exceed 6m at 450mm joist centres under domestic loadings. Longer spans can be designed by our engineers if required.
- The SFS floor system has been designed to minimise bounce, the SFS floor system has a firmer feel than other floor systems.
- The SFS floor system incorporates a perimeter bearer that serves to limit the need for additional bracing and along with our terminal joist design will also reduce the need for lintels over lower storey openings.
- The SFS joist can be boxed to form a rectangular beam than can replace LVL's or structural steel in many applications including beams around stair voids.
- The joist is commonly used in single or upper storey walls as a lintel beam.
- Cantilevers on typical floor systems are limited to around 100mm without the use of structural steel or expensive LVL's. The SFS floor system can handle cantilevers out to 1 meter depending on load conditions.
- Because of the strength of steel the SFS floor system can handle much higher point loading than most other floor systems providing greater design flexibility such as load bearing walls crossing mid span.
- SFS can design a floor for you or we can verify your design and supply a Certificate of Compliance.
- The SFS floor system is also suitable for use as a subfloor.
- The SFS floor system is a proven product with over 500 floors in service.
- The SFS floor system is suitable for use with timber or steel framed structures.

FLOOR MEMBER SIZES

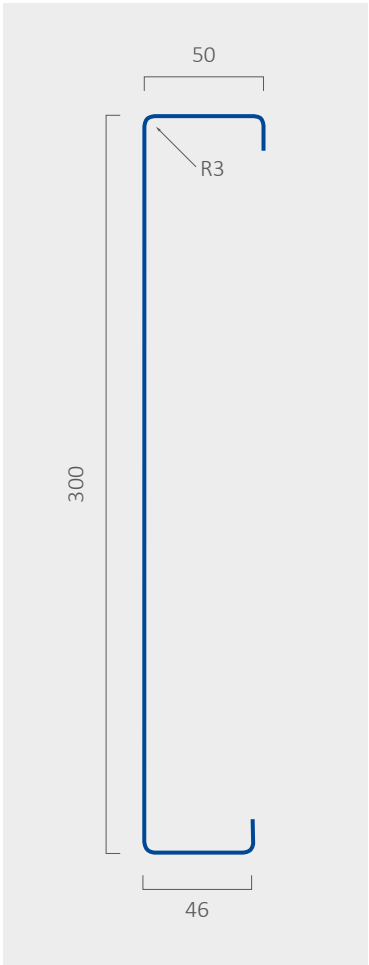
**U300
Perimeter Bearer**



Member sizes available:

- U30015
- U30019
- U30024

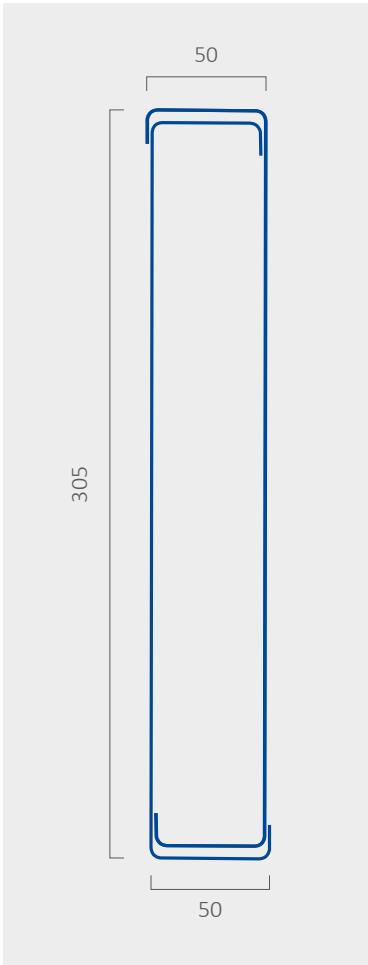
C300 Joist



Member sizes available:

- C30015
- C30019
- C30024

Boxed C300

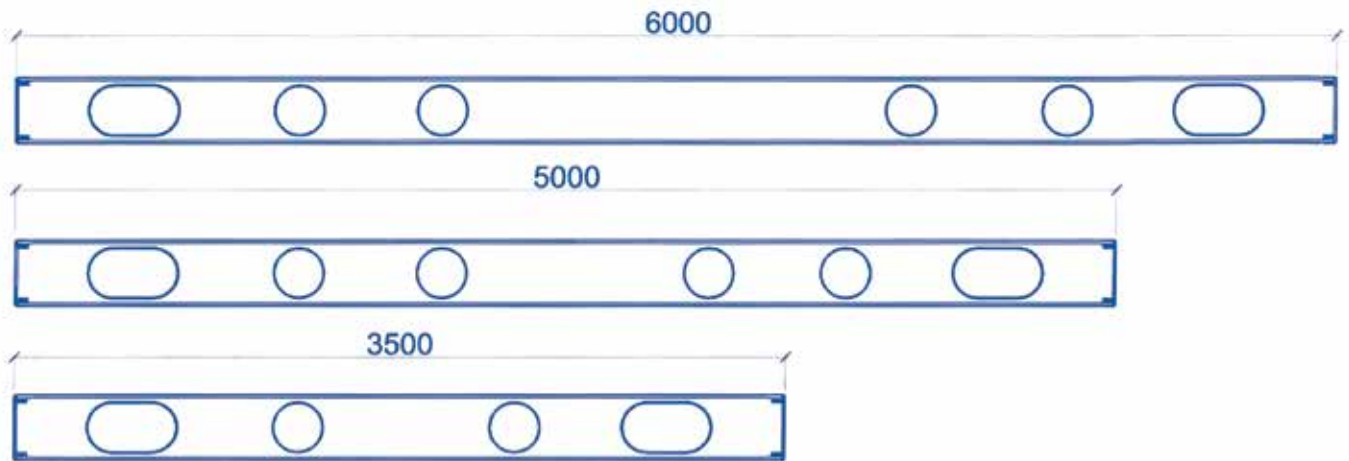


Member sizes available:

- BOX C30015
- BOX C 30019

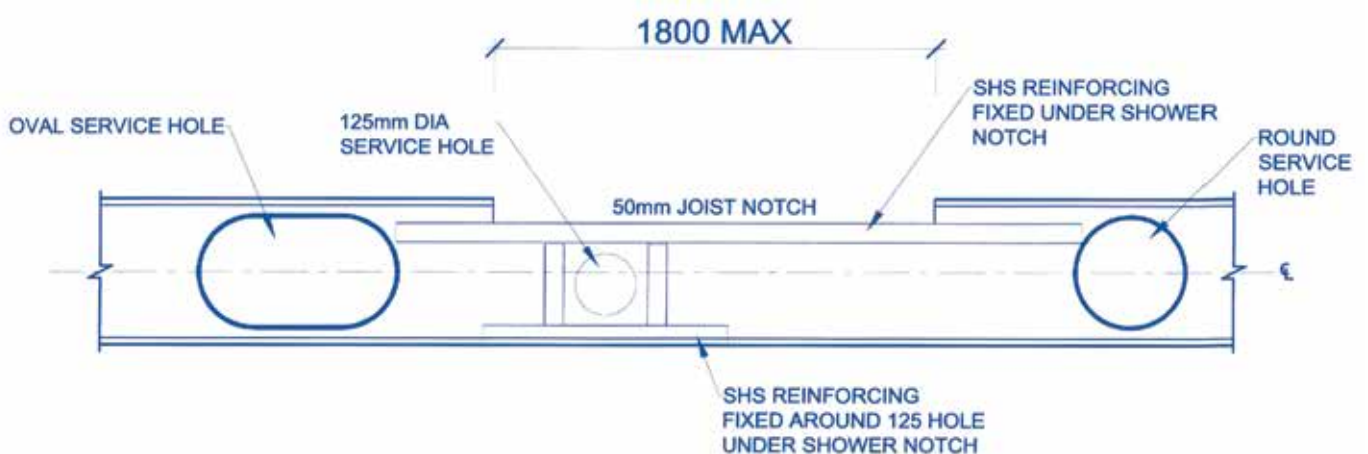
TYPICAL SERVICE HOLE LAYOUT VS JOIST SPAN EXAMPLE

LAYOUT VS JOIST SPAN EXAMPLE



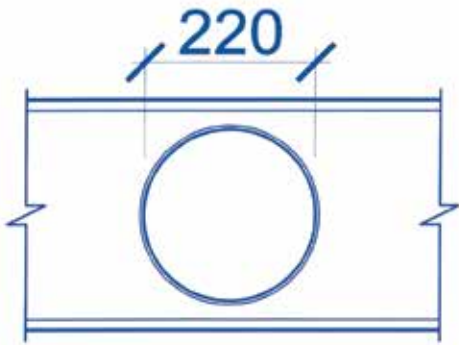
Example only, position of service holes will vary depending on joist span and situation. Refer to service hole rules for exact placing of service holes in technical section.

STEP DOWN JOIST EXAMPLE

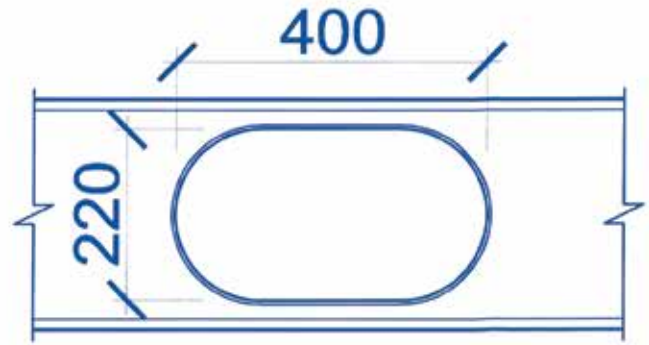


Joist step downs are typically used for showers where the floor needs to be graded towards a drain. Refer to step down joist tables in the tables section for specific joist spans.

SERVICE HOLES



ROUND SERVICE HOLE 220mm
INTERNAL DIAMETER



OVAL SERVICE HOLE 220x400mm
INTERNAL DIMENSIONS

Round and oval holes can be punched into the joists allowing for services to run within the flooring system.

HOUSE MODELS



Our 3D models can be found on our website www.steelframesolutions.com.au/products

CONTACT US

Ph: (03) 5338 4800

9 Caravan Street
Wendouree VIC 3355

info@steelframesolutions.com.au
www.steelframesolutions.com.au

f in