

# UPCOMING SOCIAL OUTINGS PENRITH



July - Sept 2025

Dear Clients,

## Changes Coming to Your Aged Care Services - Commonwealth Home Support Program

*Supporting you through every step – from 1 July 2025*

As we have been communicating over several months, there are significant changes occurring in aged care. Many of the changes have been legislated under the **Aged Care Act 2024**, which comes into effect for our services from **1 July 2025**. These changes are happening across the whole aged care system in Australia, and we're here to help make the transition as smooth and simple as possible for you. These changes affect all services provided under the Commonwealth Home Support Program (CHSP)

### CHSP Service Agreements

All CHSP services require a signed Service Agreement on file for you.

We'll be sending these agreements out in the **first week of August**, and kindly ask that they be signed and returned **by the end of August**.

We understand this may feel like a lot, but please know we're here to support you. You can give us a call anytime if you have questions or would like help going through it.

To avoid any interruption to your services, please return your signed agreement before **1 October 2025**.

### Changes to CHSP Financial Contributions

As we have communication, the CHSP program is not fully funded by the Commonwealth Government, and we are required to seek a co-payment from clients for the services delivered. While we remain dedicated to striving to keep costs to a minimum, the reality is that our services need to remain financially viable in order to continue to operate under the changes while maintaining a high standard of service.

The manner in which our CHSP Financial Contribution for services is changing and will include the following:

- A new schedule of Service Financial Contribution Fees will apply from 1 October 2025. This will be included with the Service Agreement that will be mailed out to you.
- All services provided under the CHSP program will need to be paid in full at the time of booking either over the phone or in person at one of our offices. Our Support Workers and Drivers will no longer take payments from September 30th, 2025.
- From 1 October 2025, services provided under CHSP will be charged by the hour or kilometre as indicated on the Service Financial Contribution Fees.

### Activity Calendars – Choose What Works for You

To help us reduce paper waste and increased printing and postage cost, you can now choose how you receive your monthly activity calendar:

- **Email delivery** – This is free of charge. If you have an email address or want to provide a family member's email. Please call Client Care to add this to your file.
- **Printed and posted to you** – A \$20 annual fee will be implemented from October 2025, this will cover the cost of printing and postage.

This choice will be included in your Service Agreement and won't come into effect until October 2025.

If you have any questions once your agreement arrives, please call us.

We are always here to support you.

Warm regards,  
*COMMUNITY CULTURE TEAM*

# KEY DEFINITIONS - ACCESS REQUIREMENTS



## Easy –

- Pathways are clear, level, continuous, and accessible pathways from the drop off point to the venue
- No stairs to navigate
- Wide accessible doorways inside the venue, plenty of lighting and space
- Movable or adjustable seating
- Under 50 meters of walking
- Fully accessible bathrooms
- Low noise



## Medium –

- Pathways are clear, although continuous with different surfaces used, may have small inclines, or declines to navigate from the drop off point
- Up to 3 steps with rails
- Normal sized doorways inside venue with reasonable lighting and space
- Movable seating
- 50-100 m walking required
- Accessible bathrooms
- Medium noise



## Hard –

- Pathways are a mixture of different surfaces, some being uneven. There is uphill and downhill walking from the drop off point
- More than 3 stairs and stairs with no rails
- Normal sized doorways, low lightening, limited space to move about
- Fixed seating
- Over 100 m of walking required
- Bathrooms available
- Noisy / busy venue

# Terms + Conditions

## BOOKINGS AND PAYMENTS

**To book, call us on 1300 464 444.**

You can book your Social Outing from the first day of the month prior to the date of the outing eg, to book for January, you can call us on the first working day of December. Bookings are accepted on a first come, first served basis and a waiting list is maintained if required.

## ACTIVITIES AND OUTINGS PRE-PAYMENT

All activities must be paid at the time of your booking. NB: Your seat on the bus is not confirmed until payment is received. Prepaid outings are non-refundable. Please see Payment details below.

## TRANSPORT PAYMENTS

You transport can be paid one of two ways:

1. Over the phone by calling 1300 464 444
2. Card to the Driver for the fare on the day.

## CANCELLATIONS

If you need to cancel, please call the office as soon as you can, to allow someone else to attend.

No refunds can be issued within a 5 day period from outing date

## ADVERTISED BUS COSTS

The bus prices advertised are for Commonwealth Home Support Program Clients only. Home Care Package, NDIS and other service fares are not subsidised and will be charged in accordance with our pricing schedule as per your service agreement.

## THE DAY BEFORE YOUR OUTING

You will receive an automated message the day before your outing to advise you of your pick-up time. Pickups can start as early as 6.00am. Please be ready on the day and wait inside in case we need to call you. Remember to wear comfortable shoes and bring medications, water, snacks, ID, seniors and concession cards, mobility aids and money for lunch if required.

## OUR VOLUNTEERS

Our volunteers are only able to provide general support to enter and exit the vehicle and are not able to provide physical assistance under any circumstances. If you require one-on-one support, you will be required to bring your own carer or Support Worker. Contact our Client Care Team on 1300 464 444 to find out how to book your carer or Support Worker.

## MEALS & SNACKS

Where indicated it is your responsibility to buy or bring your own lunch or snacks unless indicated that these are included in your ticketed price.

p: 1300 646 444

[www.communityculture.org.au](http://www.communityculture.org.au)

# July

## Wentworth Falls Lake and Lunch at Springwood Country Club

Tuesday 1 July

11:00am - 2:30pm



\$20.00



Easy/Medium



\$15 - \$40



\$7.00

Spend a serene day at Wentworth Falls Lake, surrounded by beautiful bushland and stunning water views. Enjoy peaceful walks along the boardwalks, spot native birds, and admire local sandstone sculptures. Afterward, unwind with lunch at Springwood Country Club (at your own cost), a perfect day out in nature!

## Mt Druitt Social Hub

Friday 4 July

10:00am - 2:00pm



\$15.00



Easy



Incl. in the ticket



\$25.00

Come along to our Social Hub at the Mount Druitt office! Enjoy a tasty morning tea and lunch, plus a mix of fun activities like games, arts & crafts, workshops, and more. Every week is different, great way to meet new people and connect with your local community.

## Cobbitty Markets and Lunch at Oran Park Hotel

Saturday 5 July

10:30am - 2:30pm



\$30.00



Medium



\$15 - \$40



\$7.00

Time to revisit Cobbitty Markets and browse unique handmade goods in a charming country setting. Enjoy treats like Devonshire tea and homemade snacks (own expense). Some stalls may be cash-only, so bring extra. Note: some uneven surfaces at the venue. After exploring, we'll head to the new Oran Park Hotel for lunch.

## Hawkesbury Social Hub

Monday 7 July

10:00am - 2:00pm



\$15.00



Easy



Incl. in the ticket



\$25.00

Come along to our Social Hub at the South Windsor office! Enjoy a tasty morning tea and lunch, plus a mix of fun activities like games, arts & crafts, workshops, and more. Every week is different, great way to meet new people and connect with your local community.

## Bonnyrigg Garden Centre and lunch at Cafe Harvest onsite

Tuesday 8 July

11:00am - 2:30pm



\$20.00



Easy/Medium



\$15 - \$40



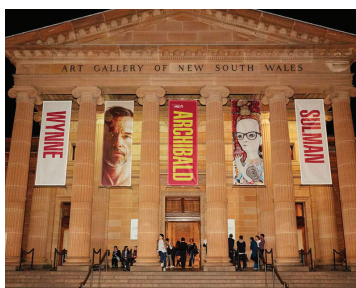
\$7.00

Looking for a relaxing and inspiring day out? Discover Sydney's best-kept garden secret! Bonnyrigg Garden Centre offers the largest range of plants, statues, pots, water features, and landscaping supplies. Stroll the beautiful grounds, get expert tips from their friendly team, and enjoy a leisurely lunch at Café Harvest (at your own cost)

## Archibald Prize Exhibition at NSW Art Gallery, Sydney & lunch onsite

Thursday 10 July

10:30am - 2:30pm



\$20.00



Easy/Medium



\$15 - \$40



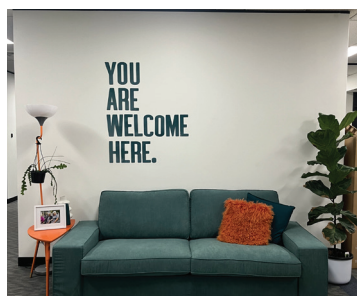
\$32.00

Visit the iconic Archibald Prize exhibition at the NSW Art Gallery, then explore the rest of the gallery at your leisure. Enjoy lunch at the Gallery Café or Espresso Bar (at your own cost) or bring your own. Complimentary motorised scooters available – ID and pre-booking required.

## Mt Druitt Social Hub

Friday 11 July

10:00am - 2:00pm



\$15.00



Easy



Incl. in the ticket



\$25.00

Join us for a delicious morning tea and lunch, and take part in a variety of fun. We play games, do art and crafts, run workshops and presentations, every week is different! Our social hubs are a great opportunity to meet new people in your local community. They are held at our Mt Druitt Office.

## Christmas in July Celebration at Camden Valley Inn - Entertainment and Lunch

Monday 14 July

11:30am - 2:30pm



\$20.00



Easy



Incl. in the ticket cost



\$67.00

Celebrate Christmas in July at Camden Valley Inn! Enjoy a festive welcome with a glass of bubbles or soft drink, followed by a traditional 2-course Christmas lunch with tea and coffee. Live entertainment adds to the cheer. Please advise us of any dietary needs.



## Client Advisory Group Meeting and lunch at Plumpton Hotel

**Tuesday 15 July**

**10:30am - 2:30pm**



**FREE**



**Easy**



**\$15 - \$40**



**FREE**

Join us at the Client Advisory Group Meeting hosted by Active Care Network. Share your ideas to help improve our services, your voice matters! Held at our office in Mount Druitt, the meeting will start at 10:30am and conclude at 12:00pm. Lunch will be at Plumpton Hotel at your own cost. Your participation is appreciated.

## Minchinbury Shopping Trip and lunch at West HQ, Rooty Hill

**Thursday 17 July**

**11:00am - 2:30pm**



**\$20.00**



**Easy**



**\$15 - \$40**



**\$7.00**

Enjoy a relaxed day out with friends! Browse for bargains at Salvo's Minchinbury, then enjoy a leisurely lunch at West HQ, Rooty Hill (own expense). On the way home, we'll visit Minchinbury Fruit Market for fresh produce (own expense). Remember to bring your freezer bags for any purchases.

## Mt Druitt Social Hub

**Friday 18 July**

**10:00am - 2:00pm**



**\$15.00**



**Easy**



**Incl. in the ticket**



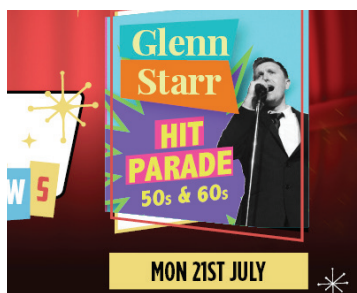
**\$25.00**

Join us for a delicious morning tea and lunch, and take part in a variety of fun. We play games, do art and crafts, run workshops and presentations, every week is different! Our social hubs are a great opportunity to meet new people in your local community. They are held at our Mt Druitt Office.

## Hit Parade 50s & 60s' Show with lunch at Glenbrook Panthers

**Monday 21 July**

**10:30am - 2:30pm**



**\$20.00**



**Easy/Medium**



**Incl. in the ticket**



**\$42.00**

Relive the golden era with the Hit Parade 50s & 60s live show, starring Glenn Starr! Enjoy timeless classics and smooth sounds from the era of jukebox hits. Includes a delicious 2-course meal. Show starts at 11:00am. Please advise us of any dietary needs.

## Hawkesbury Social Hub

Monday 21 July

10:00am - 2:00pm



\$15.00



Easy



Incl. in the ticket



\$25.00

Come along to our Social Hub at the South Windsor office! Enjoy a tasty morning tea and lunch, plus a mix of fun activities like games, arts & crafts, workshops, and more. Every week is different, great way to meet new people and connect with your local community.

## Wine Tasting at Bull Ridge Wines and Tropicana Hotel for lunch

Tuesday 22 July

11:00am - 2:30pm



\$20.00



Easy/Medium



\$15 - \$40



\$7.00

Discover this hidden gem in East Kurrajong, a friendly family winery where Ken invites you to sample his finest vintage wines. Bottles range from \$20-\$30 (own cost). After wine tasting, enjoy lunch at Tropicana Hotel (own expense). A relaxing day out with warm hospitality and scenic views.

## Morning Melodies at The Joan Sutherland, Penrith and lunch at Club Paceway, Penrith

Wednesday 23 July

10:30am - 2:30pm



\$20.00



Medium/Hard



\$15 - \$40



\$30.00

Enjoy an unforgettable musical journey as award-winning star Peter Cousins returns to The Joan! From Phantom to Les Mis, he'll perform timeless favourites with a special guest. Please note you may need to climb 5-6 steps to your seat. Lunch afterward at Club Paceway, Penrith (own expense). A must see for all music lovers!

## Mt Druitt Social Hub

Friday 25 July

10:00am - 2:00pm



\$15.00



Easy



Incl. in the ticket



\$25.00

Join us for a delicious morning tea and lunch, and take part in a variety of fun. We play games, do art and crafts, run workshops and presentations, every week is different! Our social hubs are a great opportunity to meet new people in your local community. They are held at our Mt Druitt Office.

## Roy Orbison & Friends' Show with lunch at Panthers, North Richmond

Monday 28 July

10:30am - 2:00pm



\$20.00



Easy



\$15 - \$40



\$39.00

Don't miss a tribute to the Big "O" featuring Bill Croft and Leah Cassar. Enjoy timeless hits from Roy Orbison, Linda Ronstadt and Dusty Springfield. Show starts at 11:00am and includes a one-course meal. Please advise us of any dietary needs.

## Western Sydney Airport Eperience Centre and Kemps Creek Bowling Club

Thursday 31 July

11:00am - 2:30pm



\$20.00



Easy/Medium



\$15 - \$30



\$7.00

Visit the WSI Experience Centre in Luddenham for updates on the International Airport, set to open in late 2026. Enjoy a mini cinema presentation, interactive touchscreens, and insights from friendly staff. Lunch at Kemps Creek Bowling Club at your own cost. Note: No perimeter or onsite tours available or permitted.



## Mt Druitt Social Hub

Friday 1 August

10:00am - 2:00pm



\$15.00



Easy



Incl. in the ticket



\$25.00

Join us for a delicious morning tea and lunch, and take part in a variety of fun. We play games, do art and crafts, run workshops and presentations, every week is different! Our social hubs are a great opportunity to meet new people in your local community. They are held at our Mt Druitt Office.

## Maroubra Beach Markets

Saturday 2 August

11:00am - 2:30pm



\$30.00



Medium



\$15 - \$40



\$7.00

Located in front of Maroubra Beach, these popular markets offer fresh produce, artisan product, homewares and more. Enjoy a relaxing day browsing or bargain-hunting. Lunch is available onsite or at nearby eateries (own cost) or bring your own. Some stalls may be cash-only, so bring extra.



## Hawkesbury Social Hub

Monday 4 August

10:00am - 2:00pm



\$15.00



Easy



Incl. in the ticket



\$25.00

Come along to our Social Hub at the South Windsor office! Enjoy a tasty morning tea and lunch, plus a mix of fun activities like games, arts & crafts, workshops, and more. Every week is different, great way to meet new people and connect with your local community.

## African Drumming Workshop at Henry Sports Club, Werrington County

Tuesday 5 August

11:00am - 2:00pm



\$20.00



Easy



\$15 - \$40



\$37.00

Join us for a fun 1-hour drumming session with Saul. Everyone gets a Djembe drum and joins in a rhythmic, creative journey, no experience needed. It's easy, accessible, social and uplifting. Lunch is at the bistro at your own cost. A minimum of 15 participants per day is needed for this event to go ahead.

## Ride the Metro Train to Sydenham and lunch at Canterbury-Hurlstone Park RSL

Thursday 7 August

10:30am - 2:30pm



\$20.00



Medium



\$15 - \$40



\$7.00

Experience the Metro from Tallawong to Sydenham, an impressive driverless journey linking Northwest Sydney to the Inner City via Chatswood and Central in under an hour. Tap on with your Opal or a credit/debit card. Fare: \$2.50 (seniors), \$18.70 (adults). Our drivers will meet you at Sydenham Station for lunch at Canterbury-Hurlstone Park RSL (own cost).

## Mt Druitt Social Hub

Friday 8 August

10:00am - 2:00pm



\$15.00



Easy



Incl. in the ticket



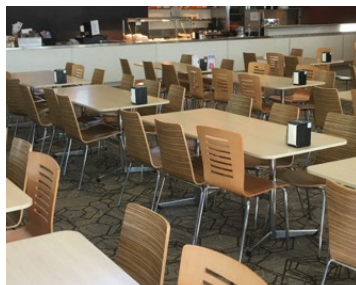
\$25.00

Join us for a delicious morning tea and lunch, and take part in a variety of fun. We play games, do art and crafts, run workshops and presentations, every week is different! Our social hubs are a great opportunity to meet new people in your local community. They are held at our Mt Druitt Office.

## Discover Horse Therapy and Lunch at Riverstone Schofields Memorial Club

**Tuesday 12 August**

**10:45am - 2:30pm**



**\$20.00**



**Easy/Medium**



**\$15 - \$40**



**\$27.00**

Join us for a special visit to the Riding for Disabled Association at the Tall Timber Centre, Gables, where you'll learn how horses support people with disabilities through therapeutic riding. Enjoy a volunteer-led presentation with a video, tea and coffee and meet the horses over the fence at the Horse yard (no riding). Afterwards, lunch at Riverstone Schofields Memorial Club (at your own cost).

## High Tea in Beautiful Décor at Clementines Café, Caddens

**Thursday 14 August**

**11:45am - 2:15pm**



**\$20.00**



**Easy**



**Incl. in the ticket cost**



**\$42.00**

Treat yourself to a delightful High Tea Décor experience! Michael and his team will have you relaxing in a beautiful decorative private room. Be spoiled with the Chef's selection of seasonal desserts, pastries, freshly baked scones, croissants, sandwiches and wraps, plus your choice of tea or coffee. Please advise us of any dietary needs.

## Mt Druitt Social Hub

**Friday 15 August**

**10:00am - 2:00pm**



**\$15.00**



**Easy**



**Incl. in the ticket**



**\$25.00**

Join us for a delicious morning tea and lunch, and take part in a variety of fun. We play games, do art and crafts, run workshops and presentations, every week is different! Our social hubs are a great opportunity to meet new people in your local community. They are held at our Mt Druitt Office.

## Hawkesbury Social Hub

**Monday 18 August**

**10:00am - 2:00pm**



**\$15.00**



**Easy**



**Incl. in the ticket**



**\$25.00**

Come along to our Social Hub at the South Windsor office! Enjoy a tasty morning tea and lunch, plus a mix of fun activities like games, arts & crafts, workshops, and more. Every week is different, great way to meet new people and connect with your local community.

## Seniors's Day at Sydney Zoo, Eastern Creek

Tuesday 19 August

10:30am - 2:30pm



\$20.00



Medium/Hard



\$15 - \$40



\$60.00

Sydney Zoo has created an exclusive Seniors package just for you! It includes entry, a drink voucher, and a 1-hour Bungarribee Wildlife Workshop with dreaming stories, and up-close encounters with native reptiles. After the workshop, explore the zoo at your own pace. Bring lunch or buy at the café. Min. 10 participants needed.

## Paddy's Market, Haymarket

Thursday 21 August

10:00am - 2:30pm



\$20.00



Medium



\$15 - \$40



\$7.00

Come explore the new Paddy's markets, full of tasty food options and great stalls to hunt for bargains. Take a trip down memory lane and view the extensive renovations. Bring or buy your lunch, walk around at your own pace, and wear comfy shoes. Remember to bring extra cash, some stalls may not take cards.

## Mt Druitt Social Hub

Friday 22 August

10:00am - 2:00pm



\$15.00



Easy



Incl. in the ticket



\$25.00

Join us for a delicious morning tea and lunch, and take part in a variety of fun. We play games, do art and crafts, run workshops and presentations, every week is different! Our social hubs are a great opportunity to meet new people in your local community. They are held at our Mt Druitt Office.

## On Broadway' Show with lunch at Panthers, North Richmond

Monday 25 August

10:30am - 2:00pm



\$20.00



Easy



Incl. in the ticket cost



\$39.00

On Broadway features showstoppers from Les Misérables, Cabaret and more. Enjoy powerful performances by Stephen Fisher-King and rising star Darcy Fisher, plus a delicious one-course meal. Show starts at 11:00am. Please advise us of any dietary needs.



## Morning Melodies at The Joan Sutherland, Penrith and lunch at Club Paceway, Penrith

Wednesday 27 August

10:30am - 2:30pm



\$20.00



Medium/Hard



\$15 - \$40



\$30.00

Experience a toe-tapping morning when Robbie Mann & his Ragtime Band entertains you with rags, blues, dances & early jazz. From Joplin to Jelly Roll, enjoy the joyful sounds of the jazz era. Afterward, lunch will be at Club Paceway, Penrith (own expense) Please note you may need climb 5-6 steps to your seat.

## Mt Druitt Social Hub

Friday 29 August

10:00am - 2:00pm



\$15.00



Easy



Incl. in the ticket



\$25.00

Join us for a delicious morning tea and lunch, and take part in a variety of fun. We play games, do art and crafts, run workshops and presentations, every week is different! Our social hubs are a great opportunity to meet new people in your local community. They are held at our Mt Druitt Office.



## Catch the Rivercat to Cockatoo Island and return

Tuesday 2 September

10:00am - 3:30pm



\$20.00



Hard



\$15 - \$40



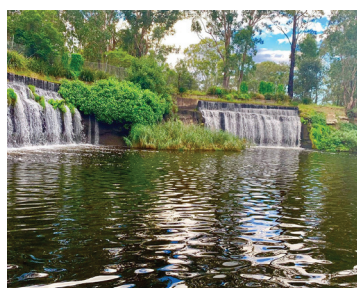
\$7.00

Cruise to Cockatoo Island on the Rivercat. Depart Sydney Olympic Park Wharf at 10:38am, arriving 11:03am to explore historic sites at your own leisure. Bring lunch or buy from local Cafés at your own cost. Afterwards, return on the 1:48pm Rivercat back to Sydney Olympic Park where our driver will meet you. Bring your Opal card and comfy shoes, there's lots of walking

## Central Gardens, Merrylands and lunch at Club Parramatta

Thursday 4 September

10:45am - 2:00pm



\$20.00



Hard



\$15 - \$40



\$7.00

Hidden in suburban Merrylands, Central Gardens is a perfect day out! Explore 12 hectares of parklands, stroll bus trails, visit the duck pond, and catch the waterfall at 11:00am. See native animals like kangaroos, emus and koalas. Enjoy lunch at Club Parramatta (at your own cost).



## Mt Druitt Social Hub

Friday 5 September

10:00am - 2:00pm



\$15.00



Easy



Incl. in the ticket



\$25.00

Join us for a delicious morning tea and lunch, and take part in a variety of fun. We play games, do art and crafts, run workshops and presentations, every week is different! Our social hubs are a great opportunity to meet new people in your local community. They are held at our Mt Druitt Office.

## Fairfield Markets and Wenty Leagues for lunch

Saturday 6 September

11:00am - 2:30pm



\$30.00



Medium



Incl. in the ticket



\$7.00

Come and explore the markets at your own pace and see what bargains you can grab. Please know although the grounds are fairly flat, some pathways could be uneven. Bring some extra cash as some stall holders may not accept card. Lunch will be at Wenty Leagues at your own cost.

## Arms of Australia Inn Museum, Emu Plains and O'Donoghues Pub for lunch

Monday 8 September

11:00am - 2:30pm



\$20.00



Hard



\$15 - \$40



\$22.00

Step back in time at the historic Arms of Australia Inn, built in 1826. Enjoy morning tea and a guided tour filled with tales of bushrangers, coach travel, and mountain journeys. Discover it's rich past and restoration stories. Afterward, enjoy lunch at O'Donoghues Pub at your own cost.

## Hawkesbury Social Hub

Monday 8 September

10:00am - 2:00pm



\$15.00



Easy



Incl. in the ticket



\$25.00

Come along to our Social Hub at the South Windsor office! Enjoy a tasty morning tea and lunch, plus a mix of fun activities like games, arts & crafts, workshops, and more. Every week is different, great way to meet new people and connect with your local community.

## Western Sydney Airport Experience Centre and Kemps Creek Bowling Club

Wednesday 10 September

11:00am - 2:30pm



\$20.00



Easy/Medium



\$15 - \$30



\$7.00

Visit the WSI Experience Centre in Luddenham for updates on the International Airport, set to open in late 2026. Enjoy a mini cinema presentation, interactive touchscreens, and insights from friendly staff. Lunch at Kemps Creek Bowling Club at your own cost. Note: No perimeter or onsite tours available or permitted.

## Mt Druitt Social Hub

Friday 12 September

10:00am - 2:00pm



\$15.00



Easy



Incl. in the ticket



\$25.00

Join us for a delicious morning tea and lunch, and take part in a variety of fun. We play games, do art and crafts, run workshops and presentations, every week is different! Our social hubs are a great opportunity to meet new people in your local community. They are held at our Mt Druitt Office.

## Coach to Bowral for the Annual Tulip Festival

Monday 15 September

10:45am - 2:30pm



\$30.00



Medium/Hard



\$15 - \$40



\$19.00

Join us for the much-loved Tulip Festival at Corbett Gardens, Bowral. Enjoy time strolling the stunning, accessible gardens, then explore Bowral's main street with plenty of lunch options at your own cost. Please note travel is by coach, so you'll need to manage high steps to board.

## Scenic drive to Megalong Valley Tea Rooms for lunch

Thursday 18 September

11:30am - 2:30pm



\$20.00



Medium



\$15 - \$40



\$7.00

Come and enjoy a scenic drive to the historic Megalong Valley Tea Rooms. Experience the charm of Lot 101, nestled in the bushland with wombat burrows, birdsong, bubbling creeks, and roaming cows. Megalong Valley Tea Rooms are a true country eatery offering fresh farm produce, award-winning scones and apple pies. Lunch is at your own expense.

## Mt Druitt Social Hub

Friday 19 September

10:00am - 2:00pm



\$15.00



Easy



Incl. in the ticket



\$25.00

Join us for a delicious morning tea and lunch, and take part in a variety of fun. We play games, do art and crafts, run workshops and presentations, every week is different! Our social hubs are a great opportunity to meet new people in your local community. They are held at our Mt Druitt Office.

## Featherdale Farm, Doonside

Monday 22 September

11:00am - 2:30pm



\$20.00



Hard



\$15 - \$40



\$35.00

Get up close with Australia's unique wildlife at this amazing Doonside park. Hand-feed kangaroos (food extra), snap a photo with a koala (extra cost), and learn about wombats, crocs & more. Explore at your own pace on accessible paths. Bring lunch or buy from the kiosk and don't miss the souvenir shop! Minimum. 10 participants needed.

## Hawkesbury Social Hub

Monday 22 September

10:00am - 2:00pm



\$15.00



Easy



Incl. in the ticket



\$25.00

Come along to our Social Hub at the South Windsor office! Enjoy a tasty morning tea and lunch, plus a mix of fun activities like games, arts & crafts, workshops, and more. Every week is different, great way to meet new people and connect with your local community.

## Morning Melodies at The Joan Sutherland, Penrith and lunch at Club Paceway, Penrith

Wednesday 24 September

10:30am - 2:30pm



\$20.00



Medium/Hard



\$15 - \$40



\$30.00

Celebrate 130 years of The Proms with the stunning 40-piece Royal Australian Navy Band. Enjoy a classical music feast inspired by the famous BBC promenade concerts, featuring works from Strauss and Wagner to Elgar and Britten. A spectacular musical experience not to be missed. Lunch is at Club Paceway, at your own expense. Please note you may need to climb 5-6 steps to your seat.

## Mt Druitt Social Hub

Friday 26 September

10:00am - 2:00pm



\$15.00



Easy



Incl. in the ticket



\$25.00

Join us for a delicious morning tea and lunch, and take part in a variety of fun. We play games, do art and crafts, run workshops and presentations, every week is different! Our social hubs are a great opportunity to meet new people in your local community. They are held at our Mt Druitt Office.

## Dolly Parton & Kenny Rogers' Tribute Show with lunch at Panthers, North Richmond

Monday 29 September

10:30am - 2:00pm



\$20.00



Easy



Incl. in the ticket cost



\$39.00

"Dolly Parton & Kenny Rogers Tribute with Dorothy Cooper & Lonnie Brabender. Sing along to hits like 'Jolene', '9 to 5', 'Islands in the Stream' and 'The Gambler'. Includes audience fun and tributes to Olivia Newton-John & John Denver. Enjoy a delicious one-course meal. Show starts at 11:00am. Please advise us of any dietary needs."

COMMUNITY  
*Culture*