

M2C

Vandal Resistant Dual Channel Condenser Microphone with Integrated Limiter

****Patent Pending 2020****



OVERVIEW:

The M2C is a low-profile, dual output, transformer-balanced microphone with an integral limiter designed for surveillance and other ambient miking scenarios. Featuring two channels of tailored audio output as well as the integral limiter the M2C is the ideal solution for simple or complex applications that require intelligible audio over an extensive dynamic range. Installer-friendly design provides fast and reliable installations. The flush mount installation allows the M2C to virtually disappear in most environments.

Featuring a premium, omnidirectional condenser capsule the M2C boasts 100dB of dynamic range, a 74 dB Signal to Noise Ratio @ 1 Pascal, and a frequency response of 250Hz-10KHz +/-2dB. It has dual output channels that are independantly adjustable from microphone level to line level in 5 increments. Also, the M2C supports cable runs over 1000'. The integral, miniature preamp circuitry is fully shielded and transformer-balanced making it highly immune to RF. Also, included is a fixed limiter that expands the dynamic range capabilities of the M2C (see Fig. 3). It can be powered via direct connection to 12-48V DC or 12-36V AC RMS power supply.

The M2C is designed to integrate with standard, single-gang electrical boxes. Also, the screw terminal block connectors provide a reliable and easy termination. Output gain adjustment is easily accomplished with a set of jumper terminals for each channel. The stainless steel face plate is low-profile and blends into many decor styles making for an almost invisible installation.

FEATURES:

- Dual Channel Output
- High-output omnidirectional capsule
- Integral limiter
- Immunity from RF
- Transformer-balanced
- Adjustable mic-line level output
- 100 dB dynamic range
- Powered by 12-48VDC or 12-36VAC RMS
- Installs into single-gang electrical box
- Designed, tested & manufactured in the U.S.A

APPLICATIONS:

- Surveillance
- Hospital and medical facilities
- Conference room
- Room ambience

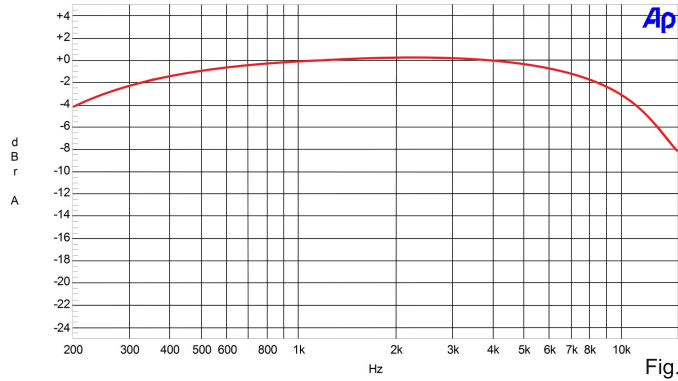
INCLUDES:

- M2C microphone
- Stainless steel face plate with integral windscreen
- 2 plate screws
- Installation instructions

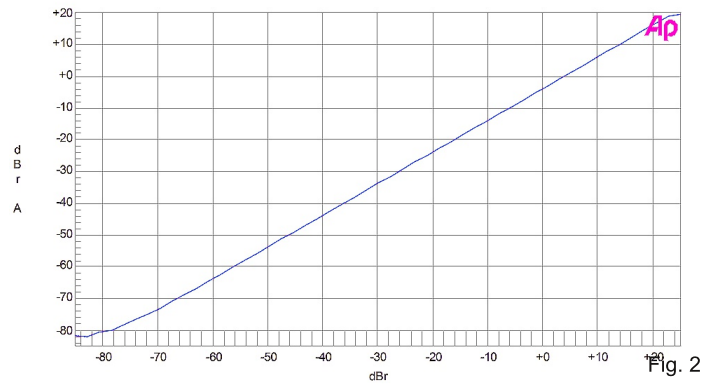
SPECIFICATIONS

Transducer Type	Electret Condenser
Sensitivity	Internally adjustable
Output Impedance	600 ohms (Line Level)
Frequency Response	250Hz - 10KHz see fig. 1
Signal to Noise Ratio	74 dB @ 1 Pa (94 dBA) see fig. 2
Equivalent Noise Level	20 dB
Maximum SPL	115 db @ 1Khz
Dynamic Range	100 dB
Power Requirements	12-48V DC or 12-36V AC RMS
Connector	Screw Terminal (Power and Signal)
Materials/Finish	Aluminum Case with Stainless Steel Face Plate
Reccomended Cable	Twisted Pair Shielded (Belden 9451 or Equivalent)
Temperature Range	-20°C ~ +60 °C
Dimensions	See Fig. 3
Weight	5.7 oz.

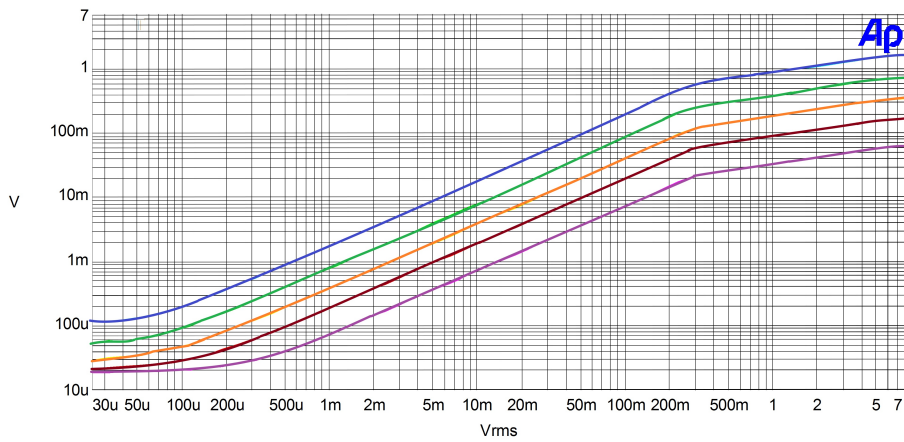
FREQUENCY RESPONSE



SIGNAL TO NOISE RATIO



LIMITING



DIMENSIONAL DRAWING

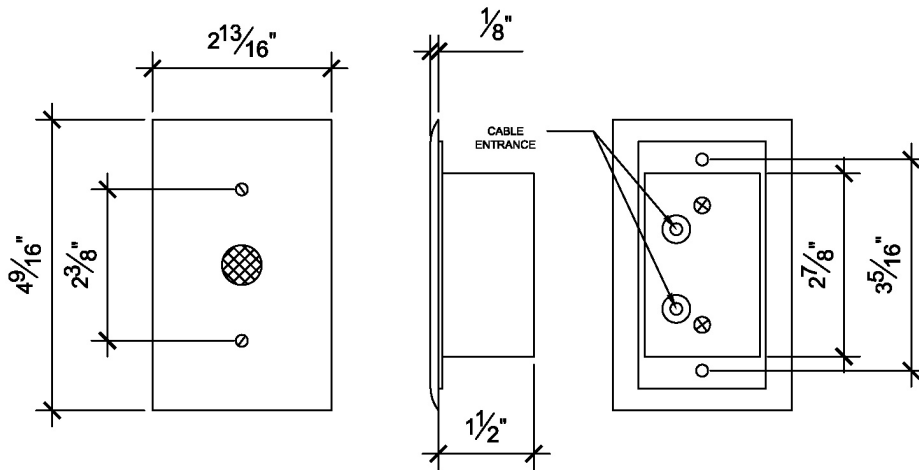


Fig. 4