

Autumn Newsletter



Blackwell Parish Council

Autumn 2025 Events calendar

Saturday 20th September	BRAG BINGO at Blackwell Community Centre
Sunday 12th October	BRAG AUTUMN AFTERNOON TEA at Blackwell Community Centre
Sunday 19th October	10am-4pm RECREATING NEWTON'S MAIN STREET display at Newton Community Centre
Friday 24th October	BRAG FAMILY HALLOWEEN PARTY at Blackwell Community Centre
Thursday 30th October	Westhouses Community Association HALLOWEEN/SCARECROW COMPETITION – from 6pm
Friday 31st October	FESTIVAL OF FIREWORKS & FAIR at Charnwood Recreation Ground in Newton Gates open from 5.30pm
Sunday 9th November	Blackwell Parish Council with St Werburgh's Church REMEMBRANCE SERVICE (details to follow)
Dates from December will be added to the next Newsletter events diary. This issue will be arriving at the end of October/start of November.	

Weekly events at the community centres

Monday	Tuesdays	Thursdays
NCAfe – 8.45am-11.30am- Newton	B.R.A.G café and the Post Office – 9am-12pm – Blackwell	B.R.A.G café and the Post Office – 9am-12pm – Blackwell
Newton OAP club – 7pm- 9pm- Newton	<u>Remember to use or lose your Post Office</u>	Newton Toddler Group – term time– 1pm-3pm– Newton

Contents Page

Page number	Information about:
2-3	Contents Page and Blackwell Parish Council contacts
4-5	Your Councillors / Councillor information
6-7	Blackwell Parish Council update
8-9	BPC update continued and PSE
10-11	Dog Fouling Westhouses Community Association
12-13	Newton WI & What does each Council have responsibility for? Plus some VE Day pictures
14-15	St Werburgh's & Blackwell Parish Council questionnaire about Blackwell Community Centre
16-17	Blackwell Parish Council Questionnaire– please share your views
18-19	Blackwell Parish Council Questionnaire and Tibshelf SNT
20-21	Newton Methodist Church and Newton OAP Club
22-23	Unity Concert Band and Newton Toddler Group
24-25	Blackwell HS2 group and NCA
26-27	Newton Carnival Team and B.R.A.G
28-29	Greater Creative
30-31	Classified section
32	Events calendar

Blackwell Parish Council

PARISH OFFICE

The Parish Office is situated at **Hilcote Community Centre:**

Address: 544 New Street, Hilcote DE55 5HU

Opening Hours: Monday 9am-2pm

Wednesday 9am-2pm

Friday 9am-2pm

Phone: 01773 580002

E-mails:

The Clerk, Kate Poynter - clerk@blackwellpc.org.uk

Admin Assistant, Becky Huckerby - admin@blackwellpc.org.uk

Projects and Procurement Assistant, Emma Ganley- projects@blackwellpc.org.uk



Dog poo bags are available from the Parish Office, the Post Office (Tues and Thurs mornings at Blackwell Community Centre) or from Martin (the Parish Ranger) if you see him out and about in the parish van.

Please note that inclusion of any articles or advertisements in this newsletter does not in anyway signify endorsement of any product or service by Blackwell Parish Council. The material and information in this newsletter is designed to provide general information. Every effort is made to ensure this information is accurate but the parish council does not take any liability for any errors or omissions.

HOW TO GET IN TOUCH:

With three different councils covering where you live, it isn't always easy to know how to contact each one. Hopefully this simple guide will help...

Blackwell Parish Council	see above or the website for BPC staff contact information and the Councillor page/website for their contact Information
Bolsover District Council	01246 242424 enquiries@bolsover.gov.uk www.bolsover.gov.uk Councillors: Clive Moesby & Sally Renshaw
Derbyshire County Council	01629 533190 www.derbyshire.gov.uk Councillor: David Harvey David.Harvey@derbyshire.gov.uk

Your Blackwell Parish Councillors

Parish Clerk

Kate Poynter
Parish Office
Hilcote Community Centre
544 New Street
Hilcote

01773 580002

Newton Ward



Sally Renshaw

01773 813937

Also District Councillor

Blackwell Ward



Chairman

Tony Gascoyne

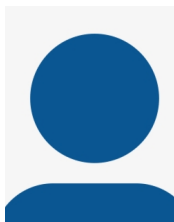
07968 971015



Vice Chair

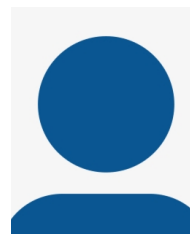
Ian Newham

01773 813552

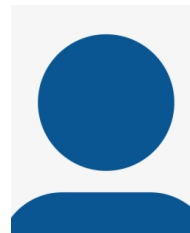


Ian Peters

Contact to follow



Councillor Vacancy



Anthony Burrows

07895517805



Martyn Hart

07887 686 423

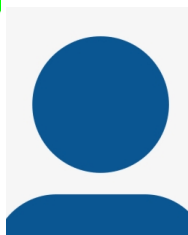


Pam Stocks

075333 94355

Your Blackwell Parish Councillors

Westhouses Ward



Kevin Hough

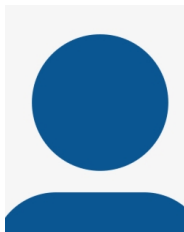
07902 749481



Roger Poulter

rpoulter@me.com

Hilcote Ward



Adrian Reynolds

07507 773571



Emma Lee

07916 881769

Could you be a Blackwell Parish Councillor?

What does it mean to be a Blackwell Parish Councillor?

Councillors are a point of contact for issues that people are concerned about in the parish. Councillors are able to effect change in their communities to improve the lives of residents. They can make decisions to put in place or to put forward the case for improved services and provisions. Training is available to Councillors who are willing to learn more.

Being a Parish Councillor is not a paid role.

How much time does it take up to be a Blackwell Parish Councillor?

There are Full Council Meetings once a month, BPC has three committees (Finance and HR; Parks, Floral and Events; Parish Facilities) which Councillors can elect to join, BPC is the

sole trustee to three charities, some Councillors represent the council on other bodies such as the Allotment Association, and other Councillors get involved in community events, help with litter picks and contribute knowledge and time to other projects.

How do you become a Blackwell Parish Councillor?

There are two ways that you can become a parish councillor – by **election**, which comes round every four years, or by **co-option** when there are unfilled vacancies (there is a co-option policy on the council website which outlines the process).

Qualifications and exemptions for standing as a Councillor can be found in the Local Government Act 1972 (LGA 1972) section.79.

Blackwell Parish Council

Councillors

There have been a few changes at the Parish Council since the last newsletter. Council would like to thank Brian Stocks (Hilcote ward), Steve Gill (Blackwell ward) and Jacqui Miles (Newton ward) for serving on the council – they will be missed at the council meetings.

However, following the recent elections, the Council would like to welcome Cllr Adrian Reynolds (Hilcote ward) and Cllr Ian Peters (Blackwell ward).

With the resignation of Jacqui Miles (who was elected to Newton Ward), there is currently one vacancy for on the council.

What happens following a resignation?

When a Councillor resigns, it is reported to Bolsover District Council, who issue a notice asking people of the ward affected if they would like to call an election.

If ten people write in requesting an election, one is held. Residents within three miles of the ward can then be nominated to stand and if two or more people are nominated, an election is held.

If less than ten people write in before the deadline, the vacancy then goes to co-option and people can apply directly



to the council to be co-opted on (there is a co-option policy on the parish council website).

If an election is called, please be sure to use your vote, as elections are charged to the Parish Council (and ultimately the council tax payers). Costs include: hall hire; people to sign voting cards out at the centres

on voting day; people to count votes at the end of the day; printing voting slips and polling cards; delivery of polling cards to each household; and district council management of the whole process from issuing notices to releasing the results – which is more expensive when they can't be run alongside elections for other bodies where some costs can be shared.

The invoice for the recent election for Newton Ward has just been received, and it came to £4,594.22.

This doesn't include the Blackwell and Hilcote election bills that are yet to be received.

VE Day and VJ Day

Thursday 8th May saw school children from Westhouses, Newton and Blackwell Primary Schools gather around the flag poles in each village to help raise the flag to commemorate VE Day whilst a Parish

Councillor made a dedication to all those who served.



On Friday 15th August, Parish Councillors raised a flag and said a few words in remembrance of VJ Day.

Thank you to everyone who was involved and attended these important events.

The annual parish council Remembrance Service will take place at St Werburgh's Church again this year on Sunday 9th November.



is chosen, Bolsover District will be part of the Northern Unitary Council.

Within this re-organisation of councils, there is the possibility that some of the things that BDC currently manage within Blackwell parish will be filtered down to parish council level. Nothing is clear yet, but the parish council feels that it is

important to start the conversation with residents and keep everyone updated as more information becomes available.

Annual Parish Meeting

A big thank you also to the community groups and everyone who attended the Annual Parish Meeting. These take place every year and give members of the public the opportunity to come along and talk about any issues that affect the parish. It is a public meeting rather than a parish council meeting, and is a good opportunity to find out about and celebrate some of the marvellous work that takes place in the villages. The next one will take place next April/May – look out for more information closer to the time.

Devolution

One of the current big challenges for all of the local councils – including the parish council - is what happens when the district councils (including Bolsover District Council - BDC) merge with Derbyshire County Council (DCC) and Derby City Council to form two unitary councils for the county. By the time this newsletter is delivered, the results should be in from the recent consultation conducted by Derbyshire County Council which essentially asked whether Amber Valley should be included in the Northern Unitary Council, the Southern Unitary Council or whether it should be split between the two. It looks like whichever option

Sponsor a hanging basket / poppy

Please see page 32 for a list of the kind people and businesses who have sponsored a hanging basket or planter this summer.

The council is also offering businesses/individuals the opportunity to sponsor a lamppost poppy. Any sponsors will be mentioned in the next newsletter and on the website/Facebook when they are put up.

If you are interested, please email admin@blackwellpc.org.uk for more information.

Parks and Recreation Grounds

The Walking Football sessions that took place on Westhouses Recreation Ground and the Bikeability sessions at Scanderlands this summer (thanks to Bolsover District Council) were enjoyed by all attendees.

Playground gates at Scanderlands and Westhouses Recreation Grounds have been fixed.

Sadly, no-one was identified following the offensive graffiti at Scanderlands. The Parish Ranger tries to remove

Blackwell Parish Council

(with scouring pads and a graffiti remover) or cover up the graffiti, but some of it is stubborn and difficult.

If you see anyone damaging anything on any of the parks or playgrounds, please make a note of the time and location and report it either to the council (contact details on page 2) or to PCSO Ashton when you see him out and about, to see if anything can be done about it. Every bit of damage done to the play areas (from offensive graffiti to picking holes in the wet pour to smashing



glass everywhere) has to be repaired, replaced or made safe again which costs the tax payers money.

Just a quick reminder that dogs are not allowed on the children's play areas on the recreation grounds.

Community Centres

Blackwell Community Centre – the new kitchen is in and already in use! Thank you again to everyone who was involved in putting it together.

The fire exit doors at Blackwell Community Centre have also



recently been replaced as they were not fit for purpose.

The council is now looking at raising funds to refurbish the rest of the community centre. In order to put in for funding applications, we need your input – please see the survey from pages 15 to 18.

There is a new Designated Premises Supervisor managing the bars at Blackwell and Hilcote Community Centres – Adele is bringing back kegged beer to the halls and bookings are being taken for parties that would like a bar (please see the information below regarding hiring a Community Centre).

She is also able to provide a bottle bar at Newton Community Centre. Keep an eye out for information on her upcoming 'pub nights' at Blackwell Community Centre.

Blackwell Parish Council

Hiring a Community Centre or Recreation ground

If you are interested in finding out more about hiring one of the parish community centres in Blackwell, Newton or Hilcote for a party (with or without a bar!), event or even as a regular hire for a community organisation, please contact Becky on admin@blackwellpc.org.uk or call the parish council office on 01773 580002. More information can also be found on the website – www.blackwellpc.org.uk/community-centres

If you are in a community group and are interested in hiring one of the Recreation Grounds for a public event (they are currently used for things like Newton Carnival, BRAG family days, charity events and special one-off community projects), Becky is the best person to ask.

Improvements at Blackwell Miners Welfare Cricket Ground

Through a funding opportunity found by Emma, our Projects and Procurement Assistant, repairs and improvements are due to be starting this Autumn to the original perimeter wall surrounding the cricket ground.

This will make an enormous difference to both the safety and appearance of the wall surrounding the cricket ground. The wall is the original wall and probably dates from a similar time to the Cricket pavilion which was built in 1908. Being able to repair and protect a part of the Parish's heritage was important and will hopefully secure its future. Updates will be shared on Facebook and in future newsletters.

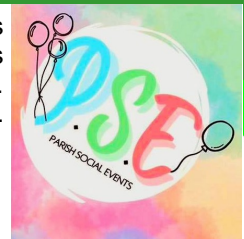


PSE



PSE have a few bingo dates coming up on Saturday evenings at Blackwell Community Centre. Doors open at 6pm. All welcome. The dates are as follows:

- 11th October
- 8th November
- 22nd November
- 20th December – Xmas Special bingo



Dog Fouling

Dog fouling is still a big issue in the Parish.

Dog poo bags can be picked up free of charge at the Blackwell Parish Council office at Hilcote Community Centre, the Post Office held during the BRAG café at Blackwell Community Centre or from our Parish Ranger, Martin.

There are 53 bins located in Blackwell parish - some owned by the parish council and some owned by the district council. Dog waste can be disposed of in any bin.

The Parish Council pays a weekly charge to have the poo bins owned by the Parish Council emptied.

A full bin location list can be found on the home page of the website: www.blackwellpc.org.uk

At last count, Newton has 23 bins, Blackwell has 12 bins, Hilcote has 10 bins, Westhouses has 8 bins and the car park at Fordbridge Lane also has a bin owned by Blackwell Parish Council.

Just a reminder that there are Bolsover District Council

enforcement officers who patrol the Parish and if you are a dog owner, you may be asked to show that you have the means to pick up after your dog.



Failure to demonstrate you have the means to pick up could result in a fixed penalty notice in line with the PSPO conditions set out. Offenders can be issued with a Fixed Penalty Notice of up to £100, and if the case goes to court it could cost the owner, or person in charge of the animal, up to £1,000.

To report dog fouling or a breach of the Dog Public Space Protection Order (PSPO), please visit the Bolsover District Council **Self Service portal** or telephone 01246 242424.

WESTHOUSES COMMUNITY ASSOCIATION



It's been quite a busy time for Westhouses Community Association. Our group have been getting together most weeks and brainstorming new ideas for upcoming displays and events throughout the year.



We had a very successful egg hunt at Easter, and all of the children had a lovely time and the weather this year was great. We decorated the trees near the school and the knitted smiley faces were a nice surprise for everyone. We painted and hid over 50 pebbles for the children to find while out at play - we haven't seen any since, so assume they've all found a new home!



Our post-box toppers are very popular and bring a smile to passersby. This year, special ones were made to commemorate VE and VJ day for the 80th anniversary. Keep a lookout around Remembrance as we have a special display we are working on that has kept us busy for a while, but it has been worth all the effort, and we can't wait to share it with you.

We continue to work on the community garden changing the flower displays throughout the year. We are always looking for volunteers to help maintain the garden, if you have a little time to spare and would like to join in, please get in touch.

October will be time for our Halloween scarecrow/pumpkin competition, and we can't believe it will be our 9th year - time really has flown. Carve or create a pumpkin, or maybe get creative and make your own scarecrow, the scarecrow could even stay up for the whole of October. We will be walking around Westhouses on the 30th of October from 6pm onwards, so light up your pumpkins and show off your creations! There will be a prize for the best on display.

In December we will be having our Festive House competition when we ask Westhouses residents to get nice and sparkly for the Christmas season - keep a look out for our posters nearer the time



Find us on Facebook: Westhouses Community Association

Newton WI



Some of our members took part in creating a beautiful float for the Newton Carnival in July.

The Newton WI float had a birthday party theme as we are celebrating turning 80 this year.

We are always looking for new members who want to have a lovely evening with us. If people would like to join us then they can come to any meeting at Newton Community Centre.

We meet on the third Wednesday of every month 6.30pm-9pm.

If you would like to get in touch then you can email newtonwiuk@gmail.com or find our Facebook page and send us a message on there.



What does each Council have responsibility for?

Allotments

Blackwell Parish Council

Animal Welfare

Derbyshire County Council

Buses

Derbyshire County Council

Bus Shelters

Derbyshire County Council
Blackwell Parish Council

CAN Rangers

Bolsover District Council

Cemetery

St Werburgh's Church

Child Protection

Derbyshire County Council

Dog Wardens

Bolsover District Council

Education

Derbyshire County Council

Electoral Registration

Bolsover District Council

Gold Card

Derbyshire County Council

Gritting

Derbyshire County Council

Grit Bins

Derbyshire County Council
Blackwell Parish Council

Highways

Derbyshire County Council

Housing

Bolsover District Council

Leisure & Culture

Bolsover District Council

Libraries

Derbyshire County Council

Litter Picking (parks)

Blackwell Parish Council

Litter Picking (streets)

Bolsover District Council

Planning (emergency)

Derbyshire County Council

Planning (general)

Bolsover District Council
Planning Portal

Play Areas

Bolsover District Council
Blackwell Parish Council

Public Rights of Way

Derbyshire County Council

Racial Discrimination

Bolsover District Council

Social Services

Derbyshire County Council

Sports Development

Derbyshire County Council

Sports Fields & Pavilions

Blackwell Parish Council

Street Lighting

Derbyshire County Council

Street Signage

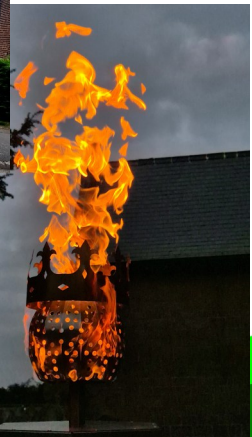
Bolsover District Council

Transport

Derbyshire County Council

Waste Collection

Bolsover District Council



VE day

St Werburgh's Church

Six months have now passed since the Vicar retired and I am pleased to say that St Werburgh's Church is continuing to support the needs of the Parish.

We have had a number of funerals and weddings and the visiting vicars who have conducted these services have been amazing and a pleasure to work with. This situation has meant an increased work load, being solely responsible, but I thank them all for their support and enthusiasm and for making life a little easier.

We are really enjoying working with Greater Creative on events and projects held in the Church. The altar frontal has been used on several occasions and all have said what a beautiful and stunning piece of work it is.

Recently we had an architectural water colour session with Steph and can confirm we have some talented artists in this Parish. The weather was also kind enabling the artists to be outside to "sketch" the building and it is hoped to be repeated later but for all day.

Jodie has started a "who lies here" project looking at headstones in the Churchyard. Of particular interest are the war graves and some of the really ornate memorials and statuary. More details will follow as it gets underway.

I have to say however that I am really



excited and looking forward to the heritage Wedding exhibition on 14th February next year which will feature dresses and photos from years gone by displayed in the church. A dress has already been obtained from 1925. Whilst it is

in the idea stage at the moment I wonder if people would be interested in having a renewal of vows service or a blessing and if so please get in touch on 873283 to register.

We will be privileged this year to host the "War Horse" in the church grounds for Remembrance Sunday.

Whilst it is a little early, Christmas services will all continue to take place as usual with the Carol service on the 14th December and the Crib service on the 24th. The timings however have been brought forward an hour to 3pm which we hope will be more favourable. Midnight Communion on Christmas Eve will still be at 11.30 pm.

Our Christmas Fayre is on Saturday the 29th November 10-12 noon at Newton Community Centre and I would like to be able to provide space for jams, pickles, soaps and candles and other crafts so if you are interested please do get in touch on 873283.

As I have said before its business as usual at St Werburgh's.

God bless, Barbara

Blackwell Parish Council Community Consultation Blackwell Community Centre Refurbishment

Blackwell Parish Council is preparing a funding application to improve Blackwell Community Centre, but we need your input to help increase its chances of success.

Please take a few moments to complete the survey below. You can return the completed form to Hilcote Community Centre post box, or the survey boxes located in Newton and Blackwell Community Centres (accessible during BRAG café and NCafe days). Alternatively, there will be a link to an online form on the Blackwell Parish Council website (www.blackwellpc.org.uk), or take a photo of the completed form and send it to projects@blackwellpc.org.uk

Your feedback is essential to help us secure this support.

Please tell us where you live. Are you a resident of:

- ☐ Blackwell ☐ Old Blackwell ☐ Newton ☐ Westhouses ☐ Hilcote ☐ Other
(Outside the Parish)

What age groups does your household represent? Tick as many as appropriate.

- ☐ 0-9 ☐ 10-17 ☐ 18-29 ☐ 30-49 ☐ 50-69 ☐ 70+ ☐ Prefer Not to Say

Have you used or visited the Community Centre in Blackwell?

- ☐ Yes, in the last year ☐ in the last 1-2 years ☐ in the last 3-4 years ☐ in the last 4-5 years
☐ over 5 years ago ☐ Never

What was the reason for your visit?

- ☐ Private Party ☐ Community Group Activities ☐ Public Event i.e. Fayre, Market
☐ BRAG Cafe ☐ Post Office ☐ Council Meeting
☐ Other, please specify:

<https://www.blackwellpc.org.uk/>
Hilcote Community Centre, 544 New Street, Hilcote, DE55 5HU
01773 580002

If you have never visited Blackwell Community Centre, why is this?

- ☐ Nothing has interested me ☐ I don't know when things are on ☐ No transport
☐ Don't know where it is ☐ Other, please specify

In addition to what is already available, what other events or services would you like to see?

- ☐ Pub Nights

Would you like to see pub nights ☐ Once per month or ☐ Twice per month

Would you be willing to pay for a ticket if there was a band or entertainment

- ☐ Yes ☐ No

More community events i.e. fayres, markets, fundays ☐ More activity classes ☐ Stalls
during BRAG Cafe/Post Office days i.e. fruit & veg, meat man

- ☐ Other, please specify

How do you typically hear about activities/services/events in the parish? Tick all that apply

- ☐ Noticeboards ☐ Parish Newsletter ☐ Facebook ☐ Word of Mouth
☐ Town Crier ☐ Parish Council Website ☐ I don't know when things are happening

Do you have any suggestions for how we can improve communication on parish activities/services/events?

What improvements would you like to see in the outside area surrounding the Community Centre?

- ☐ Lighting ☐ CCTV ☐ Outdoor seating ☐ More flowers/planting

Thinking about the exterior of the building, what would you like to see improved/installed. Tick all that apply.

- ☐ Signage ☐ Front Doors ☐ Noticeboards

Inside the foyer/entrance, what would you like to see improved/installed. Tick all that apply.

☐ Floor ☐ Notice boards ☐ Redecoration

Inside the main hall, what would you like to see improved. Tick all that apply.

☐ Redecoration ☐ Acoustics ☐ Flooring ☐ Curtains/blinds

Inside the bar/lounge area, what would you like to see improved Tick all that apply.

☐ Seating ☐ Tables ☐ Flooring ☐ Bar modernised

Do you feel it is important to showcase the history of Blackwell Community Centre/Village inside the building?

☐ Yes ☐ No

Do you have any other ideas or suggestions as to what you would like to see improved at Blackwell Community Centre?

How important is it to you and your family that Blackwell has a Community Centre?

☐ Very ☐ Somewhat ☐ Doesn't matter to me

☐ No strong opinion

Are you aware of how to book Blackwell Community Centre if you would like to hire it for your own party or event?

☐ Yes ☐ No

If Blackwell Community Centre was refurbished, would you be more inclined to attend events and book it for parties and events?

☐ Yes ☐ No

- ▲ Do you have any ideas or suggestions to make Blackwell Community Centre more inclusive and welcoming for everyone?

Would you be interested in volunteering or contributing to the redevelopment effort in any way? If yes, please expand on what you would like to be involved in...

Is there anything else you would like to add or tell us?

Thank you for taking the time to complete this survey, your views really do make a difference

<https://www.blackwellpc.org.uk/>
Hilcote Community Centre, 544 New Street, Hilcote, DE55 5HU
01773 580002

Tibshelf SNT

Meet Your Local PCSO – Jason Ashton

**Serving Derbyshire Constabulary
for 6 Years**

**Over 20 Years of Customer Service
Experience**

Patrolling: Tibshelf, Newton,
Blackwell, Westhouses & Hilcote

Why I'm Here:

I'm passionate about making a real difference. I believe that **community engagement is key**; by speaking with residents, I uncover issues that might otherwise go unnoticed and ensure they're addressed appropriately.

I'm here to:

- **Listen** to your concerns
- **Triage and resolve** local issues
- **Build trust** between the public and police
- **Promote accountability** within our service

Stay Informed & Get Involved

We offer several ways to stay connected and informed:

- **Facebook:** Tibshelf SNT Police Page. Follow daily updates, patrol news, and community initiatives.
- **Derbyshire Alert Service:** A free messaging system that keeps you informed about local policing issues. You can also **reply directly** to share your thoughts or concerns.



Let's Work Together

Your feedback helps us improve. Whether it's a concern, a suggestion, or a compliment **we're here to listen**. Together, we can build a safer, more supportive community.

**Here's to many more years of
making a difference.**

PCSO Ashton

Newton Methodist Church

NEWTON METHODIST **CHURCH**

Main Street, Newton, DE55 5TE

**More than just a
Sunday place**



- | | |
|-------------------|---|
| Sundays | Evening worship from 5.45pm |
| Mondays | Take Note Choir Practice new members welcome 2pm
Keep Fit 7.45pm new members welcome |
| Tuesdays | Second and Fourth Tuesdays Prayer Meeting 7.30pm |
| Wednesdays | Second Wednesday Afternoon Tea 2–4 pm |
| Thursdays | Every Thursday Coffee & Chat 9.30 – 11.30 am
Informal Fellowship 11.30 – 12.30 pm |
| Fridays | |
| Saturdays | First Saturday Breakfast. Full English or just a snack 10am – 12 |

Also, in season, Easter Fayre and Christmas Fair

All events, Everyone welcome.

More details available on 01773 873414

Newton & District OAP Club

NEWTON & DISTRICT OAP CLUB

We meet weekly every **Monday from 7 to 9 pm**
at Newton Community Centre

Our winter season starts soon from
September 8th to December 8th 2025

Subsidised Transport for those with mobility issues

Just £3.50 a night
including Tea or Coffee and Biscuits
(Membership optional)

Would a change of name encourage you to come or perhaps different activities? We are looking to increase our membership to sustain this 75 year old club in our Parish.

If you have any thoughts or ideas then we would like to hear from you. These could be from you or on behalf of an elderly relative/friend who just needs to get out of the house.

Email me (Melvyn) on melbarb2@icloud.com or text on 07702 183203

Thank you for reading this.

Unity Concert Band

A Busy Year!

Unity Concert Band have been quite busy this year, making music at many local venues. Way back in November, we took to the stage at Newton Community Centre to perform A Poppy Prom with our invited guests, The



Christmas Carol Service at St Werburgh's Church, Blackwell for the local residents and our own 'Christmas Cracker Concert' held at Newton Methodist Church, which filled the audience with

Christmas spirit!

In early May, we participated in Bolsover Castle's 'Bolsover Blitz', as part of the UK's VE Day celebrations. The day included lots of 1940's music and was well attended by people from all over the local district.



Nottinghamshire Military Wives Choir. The stirring band music and the choir items were greatly appreciated by the audience throughout the evening.

Christmas, saw us out caroling at Dobbies Garden Centre in aid of The Teenage Cancer Trust, playing a

More recently we had an Open rehearsal, encouraging players from near and far, to drop in and enjoy a new musical challenge. We have interesting and easy-going rehearsals, where new players are always welcome.

So, what next? At the end of August, Unity celebrated it's fourth birthday! We have come a long way in four years, starting with fourteen players and rising to around forty!

Our supportive audiences and our standing in the community have grown over that time too, for which we are very grateful.



Lastly, we performed a 'Summer Sounds' Concert on Saturday 6th September at Newton Community Centre which went well.

Newton Toddler Group



Before our Summer break, we had been busy getting our Willy Wonka float ready for Newton Carnival.

We all had a brilliant time on it and the children did really well, seeing as it was so warm. We got 2nd prize for it.



We also ran a stall which raised £132. Thank you to everyone for donating prizes & coming to have a go .

We reopen Thursday 11th September where we will be having different activities out every week. Look out for these being advertised on Facebook.

Come along & join us, have a cuppa & natter while your children play.

NEWTON TODDLER GROUP

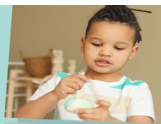
At Newton Community Centre

COME AND JOIN US!

THURSDAYS DURING TERM TIME
1PM-3PM

JOIN US FOR:
FRIENDSHIP & COMMUNITY
CREATIVE ACTIVITIES
SNACKS & DRINKS

CONTACT KATH FOR MORE DETAILS
ON 07783 645 194



Blackwell HS2 Group

STOP HS2 SPUR

 [hs2blackwellgroup](https://www.facebook.com/hs2blackwellgroup)

This statement does not answer the many questions of those who are renting HS2 properties in the parish, and while we hope for a sympathetic approach taken by the DfT to their situations, our advice would be to form a group to lobby and meet HS2 and your MP, link with other renters along the phase 2b to make your arguments and your voices heard.

Update

Since July 2016, many residents have been blighted by the prospect of homes being lost under the path of phase 2b of the HS2 line through Blackwell Parish. Although cancelled in 2023, it has taken a further 2 years for safeguarding of these properties to be finally lifted.

In a letter from MP Natalie Fleet to our group, the following is quoted from the Department for Transport regarding the removal of safeguarding for the whole of Phase 2b:

- *The Department for Transport will begin a programme to dispose of over 550 properties previously acquired for the former route.*
- *Over 300 properties are subject to Crichel Down Rules, which allow former owners whose properties were acquired under statutory blight to reacquire them at current market value.*
- *Open market disposals are expected to begin in 2026, and the Department has committed to managing this process to avoid flooding*

Whether our group and others in Long Eaton and South Yorkshire brought about a change of mind is debatable, but the powers that be certainly knew we were here!

The function of our HS2 Blackwell Group has always been to object to the Spur Line, and get the best outcome for our villages, and with this removal of safeguarding we come to the end of our project.

We thank everyone who joined with us in our protests. It's been a long nine years.



NCafé

NCafé runs every Monday at Newton Community Centre, providing a warm space to meet and chat with friends or make new ones from 8.45am-11.30am.

NCafé brings high quality teas, hot chocolate and Nespresso coffees, along with Amy Bakes cakes to customers at not for profit prices. Although set up as non-profit funded by our Bolsover Lottery players and our district councillors grants, the venture has been covering costs with the sale of drinks and cakes at bargain cost. Thanks to all for the support.

NCA are pleased that with a band of dedicated volunteers, we have been able to continue the NCafé and in September we celebrate our 12 month anniversary!

Outside of holiday times, we have free space available during opening hours for hosting other activities and welcome suggestions.

Our Environmental Activities

The Planters on the entrance to the village from Tibshelf have been restocked again and watered to keep them going during our heatwaves. A new planter has been put in place at the corner of Littlemoor and Newtonwood Lanes. For this we had help from Ben Deakin for removing the old planter, from Ralph



Godber for supply of concrete and from S.L.A.B.S for laying the base. With installation of the new planter and supply of mushroom compost we thank Jonathan Key, and for the plants thanks to Bernard.

A regular dog walker, and member of our committee, regularly chases the County Council to keep our old footpaths clear and personally tackled the overgrown footpath at the end of Town Lane Newton, recruiting the assistance of Lewis from Top Farm. Big thanks to Adrian!

Facebook

We continue to run the page which has a large following. It remains a page for positive neighbourhood news and events and our moderators work hard to monitor and preserve our objectives of friendly informative posts.

Bolsover Community Lottery

As mentioned above we rely heavily for funding our activities on the Bolsover Community Lottery, and new members are always welcomed to join at: <https://www.bolsovercommunitylottery.co.uk/support/newton-community-association>. For every £1 spent 50 p comes back to NCA, and you have the chance to win big!

Finally if anyone in Newton would like to join our volunteers in any capacity, please drop in to our NCafé mornings and you will be welcomed with open arms!

Newton Carnival Team



Newton Carnival Team have a busy upcoming Autumn/Winter. The first event is the Festival of Fireworks and Fair on Friday 31st October at Newton's Charnwood Recreation Ground (see poster above).

There is then the Newton Christmas Fayre and lights on Friday 5th December 2025 4.30pm-8.30pm with stall bookings being taken now, so please get in touch (info on the Facebook group as well as the Tea with Santa picture below).

The Newton Carnival Team along with Santa, the Naughty Elf and Grinch will be visiting Blackwell Parish on the following dates:

- Blackwell— Sunday 7th December from 4.30pm
- Hilcote— Saturday 13th December from 4.30pm

- Westhouses Saturday 13th December from 6.30pm

- Newton— Sunday 14th December from 4.30pm

Finally Tea with Santa is on Sunday 21st December at Newton Community Centre from 3pm.



B.R.A.G

THANK
YOU!

Another big thank you to everyone who came to our Free Easter Egg Hunt and Free Family Fun Day earlier this year. We also had a successful Summer Afternoon Tea in July.

Blackwell Residents Action Group



Our snack bar continues to be a great success on a Tuesday and Thursday morning at the Community Centre.

Why not pop down for a drink or just for a chat (no purchase necessary)



Save
the
Date

DIARY DATES

- 20th Sept - Cash Bingo
- 12th Oct - Autumn Afternoon Tea
- 24th Oct - Family Halloween Party
- 29th Nov - Christmas Fair
- 6th Dec - Over 60s Christmas Meal
- 13th Dec - Kids Christmas Party
- 20th Dec - Christmas Buffet with Santa

Greater Creative

Recreating Newton's Main Street of the 1940s to the 1960s

A Greater Creative Project funded by the National Lottery Heritage Fund with Thanks to National Lottery Players



Our project is progressing well, and at time of writing has moved from the gathering information stage to the beginning of creating artwork and displays for our main event on Sunday October 19th in Newton Community Centre. In the picture here, the images top right and bottom left are preliminary sketches by our commissioned artist Pippa Hulley-Gibbs.

Our 'drop ins' at several locations and events have been well attended and enabled a picture to be built of a life in Newton before many of the houses and rows were demolished; these sessions also provided opportunities for old friends to get together and share their memories. And we have gathered valuable information from former residents as far away as Australia!

Memories of the village naturally vary depending on which years were spent in Newton, and our displays will not be a picture of a single moment in time, but rather a span of years reflecting the input received and researched.

On October 19th there will be a display of professional and amateur artworks, photography and amazing "dolls house" type models currently being decorated by residents throughout the parish. Plus surprises to follow! And of course there will be the usual Greater Creative hospitality with refreshments throughout the day! This is a FREE event and we invite you, your neighbours and beyond to join us in celebrating our local history.



www.greatercreative.co.uk

When: Sunday October 19th 10am to 4pm

Where: Newton Community Centre

146 Main St, Newton, DE55 5TE



Greater Creative



Our summer activities have been many and varied; they involved all age groups across the parish from our 'Learner to Leader' young people ran sessions, to the gathering of memories from up to 80 years ago from the young at heart!

There has been an amazing take up on our creative workshops, and especially of note has been the response to the cross parish Squares project resulting in more than 5000 knitted squares currently being sewn together for a Winter Tree in each village for this December.

There's lots more activity in the pipeline for the next few months to keep us busy too! As we creep into colder months, expect to have the opportunity to come and join us again this year for some 'winter warmers', where we'll be hosting creative sessions across the parish in warm spaces and invite you to get crafty with your neighbours!



We're always looking to invite more volunteers and collaborators to the 'Greater Creative Crew', so if you're curious, have some time and would like to join local residents in making things happen in your community – get in touch! mel@platformthirty1.com 07405608560 Also get in touch if you'd like to join our new newsletter where you'll hear about our latest opportunities and events to get involved in.

THANK YOU!



COMMUNITY FUND



Heritage Fund





WILKINSON BROS LTD

INDEPENDENT FAMILY FUNERAL DIRECTORS

EST. 1952

Incorporating Derrick Gent Funeral Service, Poulton



- A completely professional 24 hour service, covering all areas
- Private Chapel of Rest in peaceful surroundings
- We will provide you with a personal and sympathetic service, looking after all your needs and wishes
- Pre-arranged Funeral Plans, tailored to your specific wishes, are available

Golden Charter
Funeral Plans

Funeral Planner of the Year Regional Winner



OUR FAMILY LOOKING AFTER YOUR FAMILY

Email: info@wilkinsonbros.co.uk • Web: www.wilkinsonbros.co.uk
10 Church Hill, Old Blackwell, DE55 5HN TEL: 01773 811371

KIDDYCASTLE HIRE



- Bespoke packages available
- Soft play and /or didi cars available with any castles
- Low height castles for smaller venues

Contact Keith or Sally on

07790 909 767

FIND US ON FACEBOOK & INSTAGRAM



SCAN HERE



Sponsorship

A huge thank you to those who have sponsored hanging baskets and planters this year.

Hanging basket sponsors:

- Cllr Martyn Hart
- Blackwell Residents Action Group
- Cllr Sally Renshaw
- Westhouses Community Association
- Jacqui Miles
- Gas Gas Gas Heating and Plumbing by Kevin Hough Ltd

Planter sponsors:

- Doe Hill Action Group
- Dog and Spoon Distillery

If you are interested in sponsoring one yourself or on behalf of a business, please get in touch with Becky on admin@blackwellpc.org.uk for more information.

There is also the opportunity to sponsor a lamppost poppy for Remembrance either for yourself or on behalf of a business. If you are interested, then please get in touch using the contact details above. Look out for price information posters on the noticeboards and Community Centres in the upcoming weeks.



The Post Office

The Post Office continues to be open on a **Tuesday** and **Thursday** morning, at **Blackwell Community Centre, 9am-1pm**, (alongside BRAG Café) for all of your regular Post Office services and needs.