



HOUSE & LAND PACKAGE

Sheoak Design with Craftsman Facade



\$1,366,580*

Lot 1115, 9 Maidens Wattle Way,
Forest Reach Estate, Huntley



- Functional split-level layout
- Open plan kitchen, living & dining
- Additional lower floor living zone
- Designed to maximise natural light

The Sheoak is a thoughtfully designed downsloping home that offers space, flexibility and functional family living across a clever split level layout. The ground floor features a light-filled open plan kitchen, living and dining area, creating the perfect central hub for everyday living and entertaining. On the lower floor, a second living zone and dedicated IT space provide additional room for work, study or relaxation.

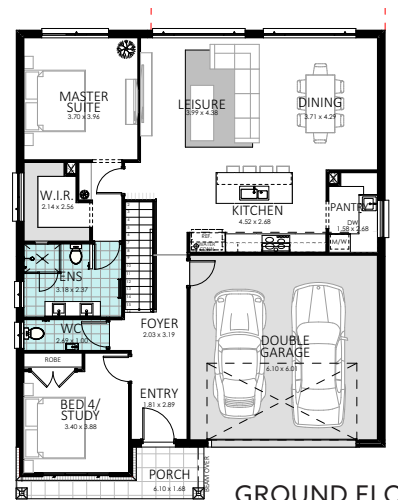
Perfectly positioned within Forest Reach Estate, the Sheoak combines modern design with practical living spaces to suit the needs of growing families.

Package Inclusions:

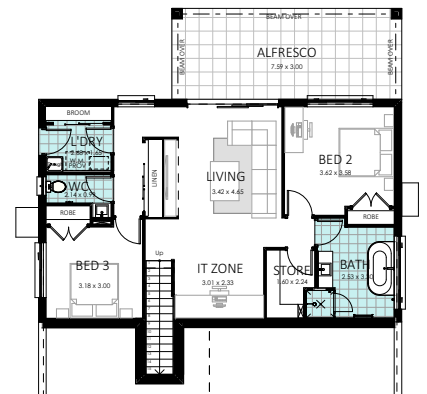
- Sheoak home design
- Craftsman facade
- Standard site costs & Basix
- Internal & external colour consultation
- Flooring throughout - hybrid & carpet
- 2590 ceilings throughout
- Concrete driveway

Premium Evolution Inclusions:

- Eco-friendly solar system
- Ducted air conditioning
- 40mm stone to kitchen benchtops
- Custom laminate kitchen as per plan
- Fisher & Paykel appliances
- Full height tiling & feature niche
- Custom laminate wall hung vanities
- Tiled porch and alfresco
- Hills security system package
- Plus much, much more..



GROUND FLOOR



LOWER FLOOR

HOME SPECIFICATIONS	
Width:	11.99m
Length:	15.23m
Total Area:	285.61m ²

BLOCK SPECIFICATIONS	
Width:	18m
Length:	30m
Total Area:	540.1m ²

For more information,
please call Jaison Grassato
on 0413 717 823

*Terms and conditions apply. See over for more details. For detailed home pricing, please talk to a New Home Consultant. Evolution Building Group Pty Ltd. Builders Licence 259797C.

HOUSE & LAND PACKAGE

Sheoak Design with Craftsman Facade



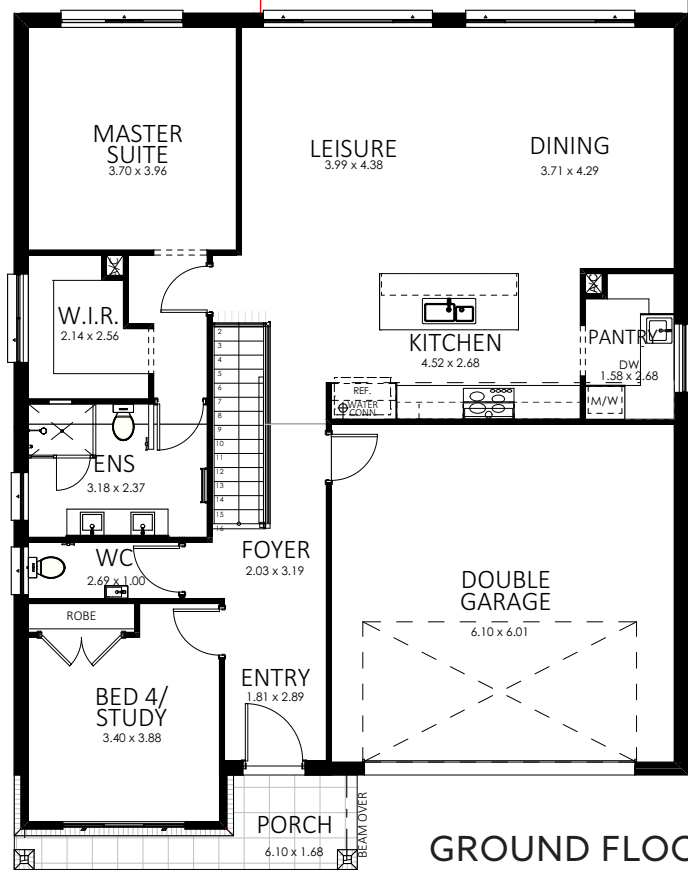
\$1,366,580*

4 2 2



Lot 1115, 9 Maidens Wattle Way,
Forest Reach Estate, Huntley

For more information,
please call Jaison Grassato
on 0413 717 823



GROUND FLOOR



LOWER FLOOR

*TERMS & CONDITIONS: Package price is based on standard home, standard floor plan and specific home design (may be smaller than facade shown). Package may be subject to developer's design review panel, council final approval, any statutory requirements and Evolution Building Group's procedure of purchase. Package price excludes stamp duty on land, legal fees and conveyancing costs (including transfer of title and searches). Purchasers must enter into a Construction Agreement with Evolution Building Group Pty Ltd separate to their Land Contract. Prices are inclusive of GST and may change without notice. Package subject to two separate contracts. Evolution Building Group make no guarantee the lot number advertised will be available at the time of purchase. Photographs may depict fixtures and features not supplied by Evolution Building Group. This design and illustration remains the property of Evolution Building Group and may not be reproduced in whole or in part without written consent. For detailed home pricing, please talk to a New Home Consultant. Evolution Building Group Pty Ltd. Builders Licence 259797C.

