



CRAFTSMAN
FACADE

LUNAR



The Lunar provides maximum appeal for young families and empty nesters with its functional and stylish design. Featuring four bedrooms, this home consists of an open plan living and dining zone with an entertainer's kitchen with walk in pantry, separate multi purpose room perfect for a kid's rumpus room or home theatre and a beautiful alfresco area, making it the ideal family home without compromising on style or comfort. The master suite is located at the rear of the home and offers a private retreat with generous walk in robe and ensuite and provides that perfect place for the parents to unwind in at the end of a busy week. Complete with ample storage and a double garage, the Lunar will have you wondering how you're ever going to leave.

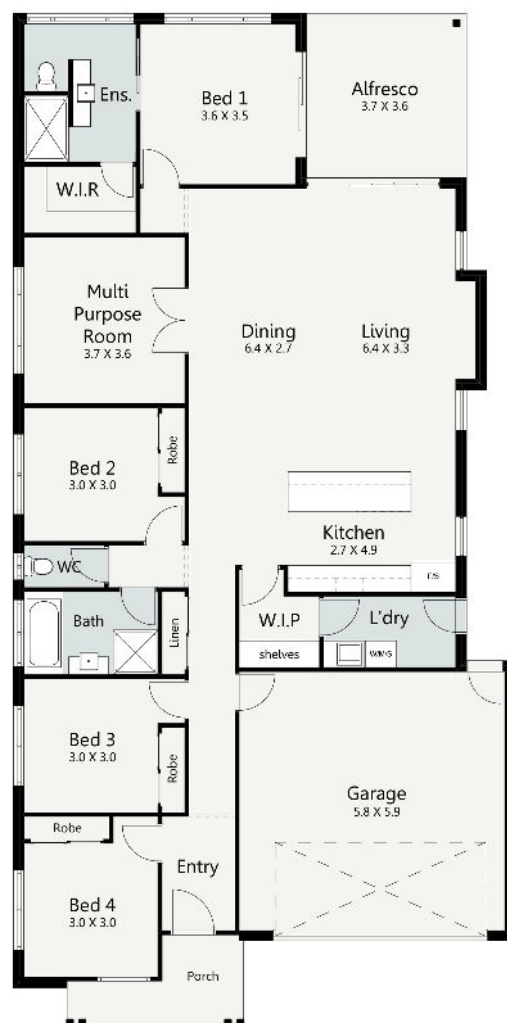
HOME SPECIFICATIONS

| | |
|--------|----------------------|
| WIDTH | 11.25m |
| LENGTH | 22.70m |
| TOTAL | 228.02m ² |

SUITS MINIMUM
BLOCK WIDTH OF



*Floor plan portrays the Craftsman Facade and may differ from other facade options.



OPTIONAL FACADES

CUSTOMISABLE PLANS

QUALITY INCLUSIONS

COLOUR CONSULTANT

Disclaimer: Photographs and illustrations are intended to be a visual aid only. Evolution Building Group gives no warranty and makes no representation to the accuracy or sufficiency of any description, illustration, photograph or statement contained in this brochure and accepts no liability for any loss suffered by any person who relies on either wholly or partly upon the information presented. All information is subject to change without notice. Copyright: All rights reserved. No part of this brochure may be reproduced, stored or transmitted in any form without written permission from Evolution Building Group. Evolution Building Group Pty Ltd. ABN: 93147075992 Lic No 259797c EBG_LUNAR_CRAFTSMAN_V1