



ARTIST IMPRESSION

APOLLO




4 2 2

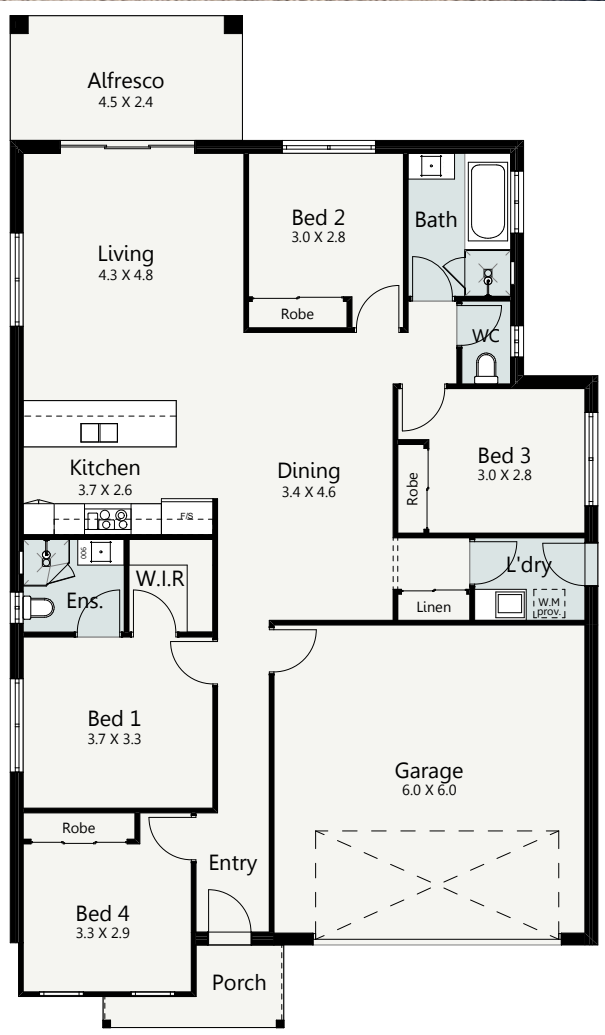
The Apollo is one home design that simply just feels right. This clever design boasts both comfort and convenience and offers functional spaces perfect for family living and entertaining.

Featuring four bedrooms including a private master bedroom with ensuite and walk-in robe and an open plan living space located at the rear of the home, this home has been designed to offer exceptional value on all fronts. With plenty of storage and a beautiful alfresco area that connects to the open plan living, kitchen and dining areas, this home really does offer the complete package.

HOME SPECIFICATIONS

WIDTH	11.39m
LENGTH	19.61m
TOTAL	189.13m ²

SUITS MINIMUM BLOCK WIDTH OF



*Facade and floor plan portray the Cottage Facade and may differ from other facade options.

OPTIONAL FACADES
CUSTOMISABLE PLANS
QUALITY INCLUSIONS
COLOUR CONSULTANT

COPYRIGHT OF PLANS AND DOCUMENTATION REMAIN THE EXCLUSIVE PROPERTY OF EVOLUTION BUILDING GROUP. Disclaimer: Images and illustrations are an artist impression and are intended to be a visual aid only. Evolution Building Group gives no warranty and makes no representation to the accuracy or sufficiency of any description, illustration, photograph or statement contained in this brochure and accepts no liability for any loss suffered by any person who relies on either wholly or partly upon the information presented. All information is subject to change without notice. No part of this brochure may be reproduced, stored or transmitted in any form without written permission from Evolution Building Group. Evolution Building Group Pty Ltd. ABN: 93147075992 Lic No 259797c EBG_APOLLO_SS_V1