



COASTAL
FACADE

VOYAGER



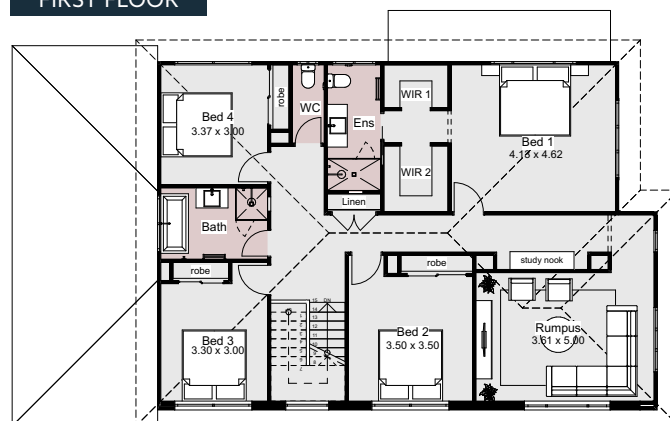
The Voyager is a modern double-storey, four bedroom home designed to provide spacious and comfortable living. The ground floor serves as an entertainer's dream, featuring an open-plan living and dining area, plus a stylish kitchen with a large walk-in pantry and island bench—perfect for hosting dinner parties and social gatherings. Upstairs, the generous master suite boasts a private ensuite and his-and-hers walk-in robes, three additional large bedrooms are located on this level, with a separate rumpus room. This thoughtfully designed home offers an abundance of light and space, ensuring luxurious living at every turn.

HOME SPECIFICATIONS

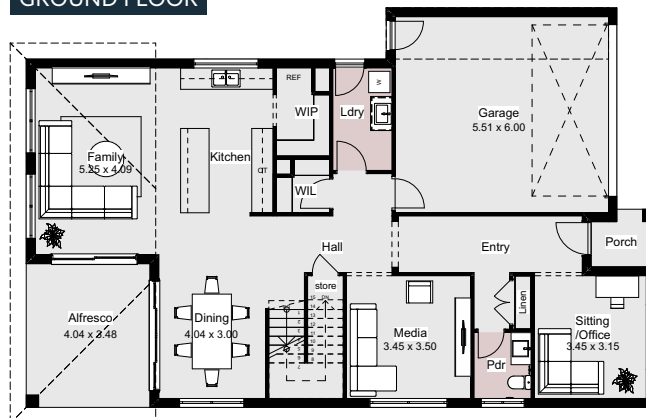
WIDTH	11.23m
LENGTH	17.68m
TOTAL	310.8m ²

SUITS MINIMUM
BLOCK WIDTH OF
13M

FIRST FLOOR



GROUND FLOOR



*Floor plan portrays the Coastal Facade and may differ from other facade options.

OPTIONAL FACADES

CUSTOMISABLE PLANS

QUALITY INCLUSIONS

COLOUR CONSULTANT

Disclaimer: Photographs and illustrations are intended to be a visual aid only. Evolution Building Group gives no warranty and makes no representation to the accuracy or sufficiency of any description, illustration, photograph or statement contained in this brochure and accepts no liability for any loss suffered by any person who relies on either wholly or partly upon the information presented. All information is subject to change without notice. Copyright: All rights reserved. No part of this brochure may be reproduced, stored or transmitted in any form without written permission from Evolution Building Group. Evolution Building Group Pty Ltd. ABN: 93147075992 Lic No 259797c EBG_VOYAGER_COASTAL_V1