



PHOENIX



TRADITIONAL
FACADE

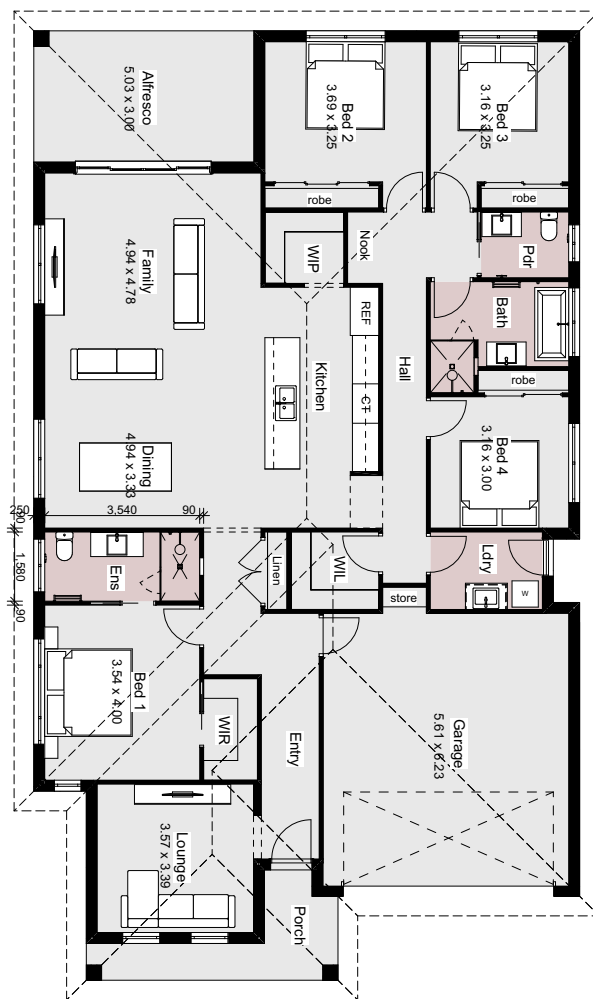
The Phoenix is a timeless, well-appointed home that offers exceptional value without compromising on style or comfort. Designed with families in mind, it features four generous bedrooms, including a master suite complete with a walk-in robe and private ensuite. The classic kitchen serves as the heart of the home, seamlessly connecting to the spacious dining and living areas. A covered alfresco area, accessible from the main living space, provides the perfect setting for relaxed entertaining or family gatherings. With its thoughtful layout and emphasis on functionality, The Phoenix is an ideal choice for those seeking a traditional home with modern conveniences.

HOME SPECIFICATIONS

WIDTH 12.47m
LENGTH 21.69m
TOTAL 253.8m²

SUITS MINIMUM
BLOCK WIDTH OF
14.4M

*Floor plan portrays the Modern Facade and may differ from other facade options.



OPTIONAL FACADES

CUSTOMISABLE PLANS

QUALITY INCLUSIONS

COLOUR CONSULTANT

Disclaimer: Photographs and illustrations are intended to be a visual aid only. Evolution Building Group gives no warranty and makes no representation to the accuracy or sufficiency of any description, illustration, photograph or statement contained in this brochure and accepts no liability for any loss suffered by any person who relies on either wholly or partly upon the information presented. All information is subject to change without notice. Copyright: All rights reserved. No part of this brochure may be reproduced, stored or transmitted in any form without written permission from Evolution Building Group. Evolution Building Group Pty Ltd. ABN: 93147075992 Lic No 259797c EBG_PHOENIX_TRAD_V1