



GEMINI



COASTAL
FACADE

The Gemini is a double-storey, four-bedroom home crafted for spacious and comfortable living. The ground floor is an entertainer's paradise, featuring an open-plan living and dining area alongside a stylish kitchen with a walk-in pantry and island bench—perfect for hosting gatherings and dinner parties.

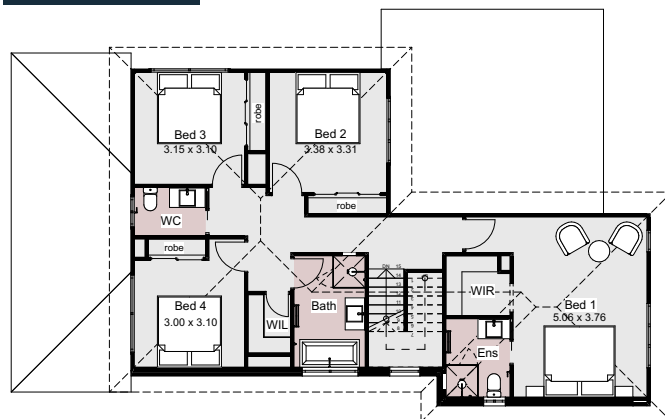
Upstairs, the expansive master suite comes complete with a private ensuite and walk-in robe and three additional generously sized bedrooms. With abundant natural light and a well-thought-out design, this home delivers luxurious living in every detail.

HOME SPECIFICATIONS

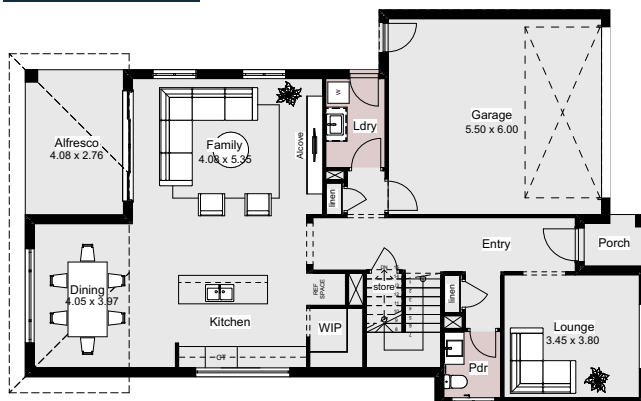
WIDTH 11.15m
LENGTH 17.96m
TOTAL 264m²

SUITS MINIMUM
BLOCK WIDTH OF
13M

FIRST FLOOR



GROUND FLOOR



*Floor plan portrays the Modern Facade and may differ from other facade options.

OPTIONAL FACADES

CUSTOMISABLE PLANS

QUALITY INCLUSIONS

COLOUR CONSULTANT

Disclaimer: Photographs and illustrations are intended to be a visual aid only. Evolution Building Group gives no warranty and makes no representation to the accuracy or sufficiency of any description, illustration, photograph or statement contained in this brochure and accepts no liability for any loss suffered by any person who relies on either wholly or partly upon the information presented. All information is subject to change without notice. Copyright: All rights reserved. No part of this brochure may be reproduced, stored or transmitted in any form without written permission from Evolution Building Group. Evolution Building Group Pty Ltd. ABN: 93147075992 Lic No 259797c EBG_GEMINI_COASTAL_V1