



TRADITIONAL
FACADE

Dual Occupancy

GALILEO

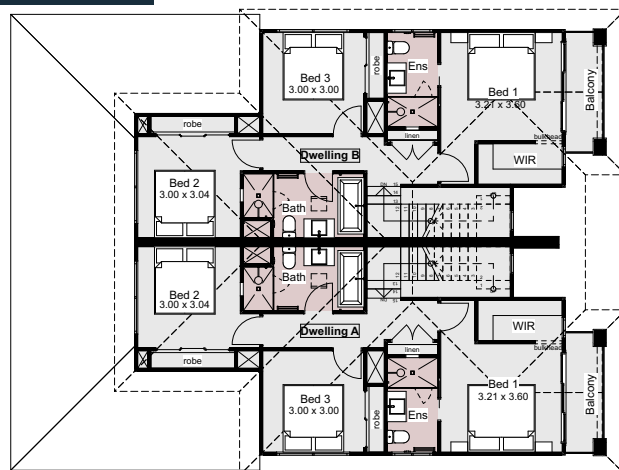


The Galileo is a striking dual-occupancy home that offers both privacy and luxury. With separate entrances for each residence, the design optimizes space and caters to a variety of lifestyle preferences.

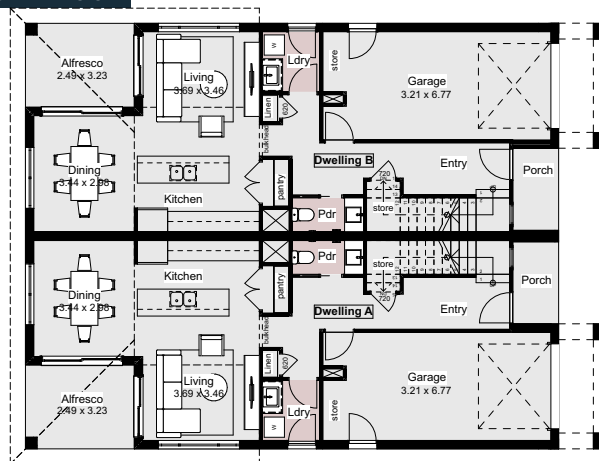
The ground floor features an open-plan living area, gourmet kitchen, and walk-in pantry are perfect for effortless entertaining and hosting.

Upstairs, the master suite comes complete with a private balcony & ensuite, and walk-in robe. Two additional generously sized bedrooms provides ample space for family living.

FIRST FLOOR



GROUND FLOOR



HOME SPECIFICATIONS

WIDTH	12.62m
LENGTH	17.20m
TOTAL	346.4m ²

SUITS MINIMUM
BLOCK WIDTH OF



*Floor plan portrays the Traditional Facade and may differ from other facade options.

OPTIONAL FACADES

CUSTOMISABLE PLANS

QUALITY INCLUSIONS

COLOUR CONSULTANT

Disclaimer: Photographs and illustrations are intended to be a visual aid only. Evolution Building Group gives no warranty and makes no representation to the accuracy or sufficiency of any description, illustration, photograph or statement contained in this brochure and accepts no liability for any loss suffered by any person who relies on either wholly or partly upon the information presented. All information is subject to change without notice. Copyright: All rights reserved. No part of this brochure may be reproduced, stored or transmitted in any form without written permission from Evolution Building Group. Evolution Building Group Pty Ltd. ABN: 93147075992 Lic No 259797c EBG_GALILEO_3B_DUAL_OCC_TRAD_V1