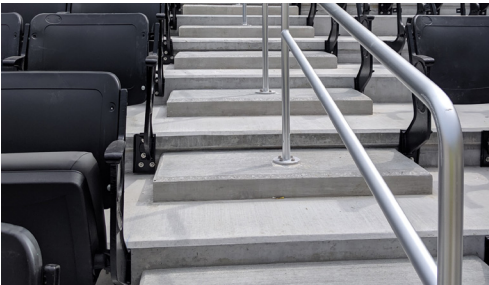




# Mizzou Stadium

Columbia, MO



## Architectural Metals Inc Shows Their Support for Mizzou Football With Customized Hand Railing Throughout New South End Zone Facility

Most University of Missouri football fans show their support by wearing Tiger's gold and black, but Architectural Metals Inc, (AMI) in St. Louis showed its support for Mizzou in its own unique way. The company has supplied all the anodizing for the massive system of new safety railings at Mizzou's most significant addition ever added to the stadium's skyline – the new South End Zone complex. The facility, which houses the everyday operations of the football program, is a state-of-the-art operations facility which also provides numerous new amenities for fans – the most visible of which is a massive scoreboard/video-board spanning the width of the building.

Mizzou's entrance into the prestigious SEC conference in 2011 put the regional spotlight on the South End Zone complex. "The pressure was on during this project," says AMI's Joe Boone. "Dignitaries were constantly on site, and we had to make sure every detail was perfect and on-time."

Working with long time customer Snyder Engineering in Columbia, Missouri, Boone managed an aggressive turnaround schedule in St. Louis. "Every few days, we had to produce 50-60 pieces of material and truck them to Columbia. It took everything we had from a capacity standpoint, but we were able to meet our two-week turnaround times while keeping other customers' jobs moving." In total, the project required 1,521 pieces of rails and supporting parts, accounting for 6,455 square feet of

AMI is proud to have been a key player on the construction team for the University of Missouri's south end zone facility. Nearly every area within this incredible project required some form of railing provided by AMI, including:

- The Bunker Club's passage from the locker room to the field
- Show Me Club terrace
- Customized C-suites
- Public seating
- Twin grand staircase entry
- Flyover railing above the strength training center
- Stair railings in the multi-level viewing / meeting rooms
- Railing in pool areas





The job was wrapping up as the pandemic began, making scheduling even tighter. AMI never closed its doors, and Boone notes that “we work with chemicals everyday, so safety and personal protection was always on on radar screens. We knew how to keep people safe, and we powered through.”

The project started March 7, 2019 with AMI delivering the final pieces on August 23, 2019, which overlapped the time when the pandemic was impacting every facet of society and especially manufacturing.

“Columbia and St. Louis are less than two hours apart, and this made a huge difference in delivering material,” adds Boone, “We were able to react quickly, we could accommodate changes as needed, and on a job this size, there were plenty.”

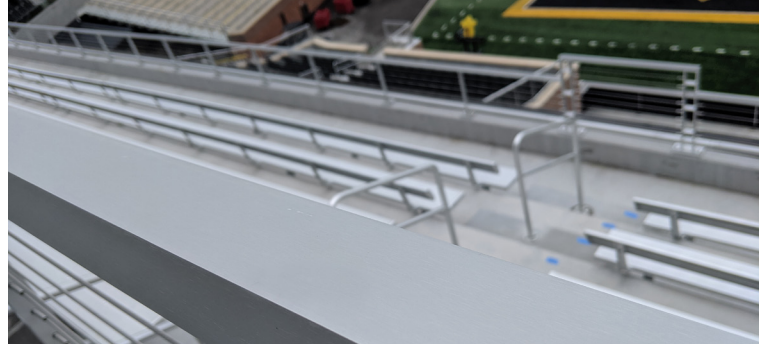
Boone’s team completed the huge high-profile project on time and on budget. “Our motto is your problem is my problem,” says Boone.

### AMI’s St. Louis Facility

With more than 60 years in the anodizing and metal finishing business, AMI has created its own niche in the industry as a mid-sized anodizer with capabilities for multiple racks or single racks for custom fabrications.

In 1987, AMI built a new facility to better supply its sister company *WINCO Window Company* with custom anodized window and door frames. A large capital investment provided for recent improvements in technology, including a new power supplier/rectifier, new chillers, and a selection of traditional acid and caustic finishes for etching. These improvements have ensured better efficiency of time and use of equipment, allowing AMI the ability to satisfy the demands of WINCO with less than half of its capacity, as well as take on independent jobs for outside customers simultaneously. AMI works with fabricators of aluminum products and extruders for commercial and residential industries nationwide.

AMI specializes in large extrusion and fabricated work. Intermediate tanks are available up to 25 feet, and large format tanks, along with the ability to build custom racking, allow AMI to handle large and awkward shapes with ease. Whether it is a highly custom fabrication on a small trailer or 40,000 pounds of extrusion coming into AMI’s indoor loading and unloading facility, AMI is ready to handle the job.



*Before the start of the 2019 football season, the University of Missouri completed its all-new \$99 million south end zone facility at Memorial Stadium. The state-of-the-art facility is the heart of the Mizzou Tigers’ football program, featuring a players’ locker room worthy of professional athletes, as well as several amenities: an enhanced sports medicine facility with Hydrotherapy recovery pools, Hyroworx, and lap pools; a strength training weight room that’s nearly twice the size of the one at the Missouri Athletics Training Center (MATC) where the football team used to train; an equipment storage room; and a nutrition oasis/dining area. The coaching staff has their own locker room, third floor offices, team and position meeting rooms, and a recruiting lounge overlooking Faurot Field.*

### Project Details

**Project:** South End Zone Facility, Memorial Stadium, University of Missouri

**Location:** Columbia, MO

**Project Size:** 141,00 SF

**Started:** Fall 2017

**Completed:** Fall 2019

**Total Cost:** \$99,000,000

### Project Partners:

**Owners:** University of Missouri, Columbia, MO

**Architect:** Populous, Kansas City, MO

