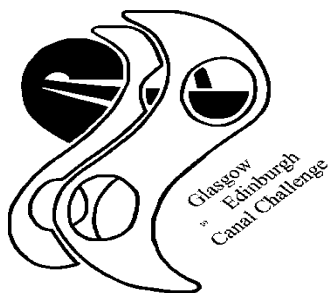


G-E 2025



PADDLE
SCOTLAND



Chief Official & Emergency Phone 07484655525

Event Information (please read in conjunction with the G-E race rules document)

G-E
2025

E
v
e
n
t

I
n
f
o
r
m
a
t
i
o
n

ENTRIES

Entries should be made online at [EventsAndBookings - JustGo](#)

The closing date for entries is Friday 3rd October 2025.

Entry fees

£20 per adult paddler in classes A, B, C, D

£15 per Junior (U18) paddler in classes A, B, C, D

£10 per paddler in classes E, F, G

PRIZES

Limited edition medals will be awarded to all those who complete the course. Trophies will be awarded to the winners of each of the seven classes A – G.

COURSE

Day 1 - Forth & Clyde Canal from Speirs Wharf, Glasgow to the Falkirk Wheel, c. 24 miles.

Day 2 - Union Canal from above Falkirk Wheel to Lochrin Basin, Edinburgh, c. 31 miles.

The start on Saturday 11th October is at Speaker Martin's Lock, Speirs Wharf, Glasgow. The finish is below the Millennium Wheel, Falkirk. Portages are required around the locks between Banknock and Bonnybridge in the last 5 miles of this stage.

The start on Sunday 12th October is above the Millennium Wheel and the locks of the Falkirk Interchange on the Union Canal. The finish is c.100m before Leamington Lift Bridge, Lochrin Basin, Edinburgh. As this is a contour canal there are no locks to portage.

All competitors are required to navigate the entire length of the canals. There will be mobile checkpoints in place to ensure that this is done. Competitors may portage in places other than around locks or natural blockages but must, at all times, follow the route of the canal and in no way shorten the course.

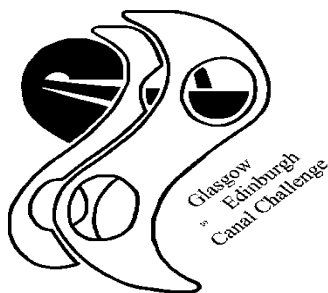
CRAFT

Entries will be accepted from Kayaks, Canoes, Skis and SUPs.

CLASSES

A – K1/ C1- singles	One paddler, paddling the whole course.
B – K2 / C2- doubles	One crew, paddling the whole course.
C – K1 / C1 Singles Relay	2 paddlers as a team, paddling alternate sections.
D – K2 / C2 Doubles Relay	2 crews as a team, paddling alternate sections.
E – K1 / C1 Singles Relay Team	Up to 6 paddlers as a team, paddling alternate sections.
F – K2 / C2 Doubles Relay Team	Up to 6 crews (12 paddlers) as a team, paddling alternate sections.
G - Open Team Relay	Up to 12 paddlers as a team, paddling alternate sections using any combination of craft.

G-E 2025



PADDLE
SCOTLAND



Chief Official & Emergency Phone 07484655525

Event Information (please read in conjunction with the G-E race rules document)

G-E
2025

E
v
e
n
t

I
n
f
o
r
m
a
t
i
o
n

AGE

Paddlers for Classes A and B must be 16 years of age, or over, on 1st January 2025. There is no minimum age for paddlers in other classes, but care should be taken to ensure that paddlers are not over stretched, particularly in adverse weather conditions.

Team leaders are responsible for ensuring that a Parental Consent Form and emergency contact details are held for all team members under the age of 16 years who are not accompanied by a parent/carer.

SUPPORT CREWS

All paddlers should have a support crew and transport. Relay Classes C,D,E,F and G may use their competing members as their support crew.

A competitor may receive assistance (eg. refreshments, repairs, clothing) from bank support crews, so long as it does not impede other competitors, but they may not be progressed along the course in any way.

Competitors who require assistance to lift/carry their boat should contact the organiser prior to the event to arrange this.

STARTS

Annotated maps of start & finish points can be found at the end of this document.

Saturday 11th October : Check in : from 8:00am at Speirs Wharf, Port Dundas, Glasgow.

Start Window : 9:00am to 12:00noon

Finish Window : 2:30pm to 4:30pm

Paddlers select their own start time to ensure they arrive in Falkirk while the finish window is open. Those who anticipate taking 6 - 7 hours should start between 9am and 10am, while those who think they will take only 3 – 4 hours should be starting close to noon. Paddlers who fail to reach Falkirk by 4:30pm will not be able to start on Sunday.

Sunday 12th October : 8:30 to 11:30am –Starts staggered with the slowest paddlers starting first.

Start times will be advised at the finish on Saturday.

Start at the Falkirk Interchange, Union Canal.

CAR PARKING AT START & FINISH AREAS

Annotated maps of parking at the start & finish points can be found on page 6,9,10 &12.

The normal car parking arrangements for the start and finish of each day are outlined below however, these could be subject to change on the weekend of the event.

Saturday Start

The start on Saturday is at Speaker Martin's Lock, Speirs Wharf, Glasgow G4 9TJ. It is not possible to leave vehicles here after the start as the area will be locked at midday.

There is limited car parking at the start on Saturday and it is important that the local parking restrictions around the housing are observed.

G-E 2025



PADDLE
SCOTLAND



Chief Official & Emergency Phone 07484655525

Event Information (please read in conjunction with the G-E race rules document)

G-E
2025

E
v
e
n
t

I
n
f
o
r
m
a
t
i
o
n

Saturday Finish

The most convenient parking area on Saturday is on the North side of the canal rather than in the Falkirk Wheel Visitor Centre car parking on the south side. Access to this car park is by following the Park & Ride signs at the roundabout on the outskirts of Falkirk on the A803 and A883. Continue past the Park and Ride and into the public car park. Take care as there is a height restriction on this car park. Higher vehicles can continue past the car park to the drop off area.

Sunday Start

On Sunday morning there is a drive or walk of c.400m along rough track to get to the canal. Through advance contact with the event organiser it is possible to arrange vehicular access to the towpath for paddlers with mobility difficulties.

Sunday Finish

If you wish to do a shuttle at the start of the day on Sunday and leave your car in Edinburgh there is onstreet parking in Gilmore Park which is a dead end road leading to Leamington Lift Bridge from Dundee Street.

From c.2:30pm on Sunday there will be access to park on Scottish Canals land alongside the canal at the finish line. When driving along the canal side you must put on your hazard lights as this is primarily a footpath.

RACE NUMBERS

Each entry will be given a number sticker which should be displayed, as instructed at, all times. For relay teams using more than one boat a number sticker will be provided for each boat.

RACE OFFICIALS

There are both static and mobile marshals to check adherence to safety and other event rules by all competitors and their support crews. Marshals can offer advice and support to paddlers and support crews such as information about distances and reminders related to safety. Race Officials may via team leaders or directly ask paddlers to withdraw if it is felt they are not in a fit state to continue or if it is considered unsafe for them to continue due to darkness or weather conditions.

RELAY CHANGE OVERS

Incoming paddlers in the Relay, Team Relay and Open Team Relay classes must ensure that their boat overlaps the outgoing paddler before the "baton" is handed over.

Parking at change overs

Care should be taken to avoid inconvenience or danger to other road users. Care should also be taken to ensure that vehicles and/or support crew do not obstruct the tow path in any way as this may cause problems for paddlers who are portaging or for other canal and towpath users.

Wynford Lock (the first portage)

Please could you ensure that support crews do not park on the south side of the Canal at Wyndford Lock, the access on this side from Wyndford Road is private. There is parking for three to four vehicles on either side of the road at Wyndford Lock on the north side of the canal (towpath side) Please do not park close to the Cottage on the track and obstruct their access.

G-E 2025



PADDLE
SCOTLAND



Chief Official & Emergency Phone 07484655525

Event Information (please read in conjunction with the G-E race rules document)

G-E
2025

E
v
e
n
t

I
n
f
o
r
m
a
t
i
o
n

WITHDRAWAL

Withdrawals from the race must be reported to the Timekeepers / Marshalls at the next mobile checkpoint, or by phone to the Chief Official as soon as possible.

PROTESTS and CONCERNS

Any protest or concerns should be made via team leader to Chief Official in person or by phone on the Event Emergency Phone Number.

SAFEGUARDING

The Event Safeguarding Officer is Debi Ives. Any issues or concerns can be reported to her via debiives@gmail.com.

CANAL ETIQUETTE & SAFETY

In addition to the safety requirements detailed in the G-E Rules and those in the Scottish Marathon Racing Rules of Competition [Scottish Marathon Racing Rules.docx](#) please note the following :

- Be courteous to other canal users, including motorboats, rowers and fishermen.
- Move to canal right and offer space for other craft to pass.
- Let faster crafts pass as soon as you can.
- Take care particularly when negotiating bends and bridges
- Pass approaching vessels on the right.
- When overtaking a slower canal barge pass on their left.
- In the event of a capsize, the towpath side of the canal is normally the best point for egress. Other paddlers must offer assistance to any paddler in difficulty.
- Keep towpaths clear for walkers, cyclists and works access.
- Please ensure that your boats are dry / clean before they are put on the water for the event and also once returning to home waters to avoid transmission of non-native species. [Check Clean Dry » NNSS](#)
- Personal hygiene - as with all water activities please wash before eating or drinking.
- Water-borne infections – all cuts and grazes should be covered, and good hygiene practises adopted after the race.
- Paddlers should be suitably dressed for the conditions. October in Scotland can be wet and windy and 56 miles is a long way! – “prepare for the worst and hope for the best”.

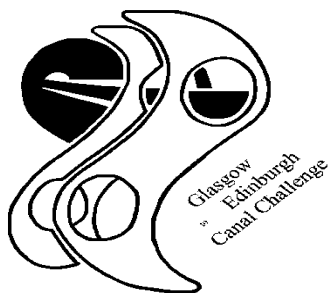
DISTANCES

Line maps showing distances and possible relay change over points or support crew feeding stops are on pages 8 & 11 of this document.

START & FINISH LOCATIONS

Annotated maps showing Saturday and Sunday start and finish areas are on pages 6, 9 10 & 12 this document.

G-E 2025



PADDLE
SCOTLAND



Chief Official & Emergency Phone 07484655525

Event Information (please read in conjunction with the G-E race rules document)

G-E
2025

E
v
e
n
t

I
n
f
o
r
m
a
t
i
o
n

TEAM LEADERS DUTIES

Buoyancy aids – It is the responsibility of the team leader to ensure that all team members in Classes A & B and all those under 16 years on 1st January 2025 are wearing buoyancy aids. Team leaders can require any other paddler in their team to wear a buoyancy aid in the interest of safety.

Buoyancy in boats - It is the responsibility of team leaders and competitors to ensure their craft have enough fitted buoyancy to keep them and their crew afloat in the event of capsize or when full of water.

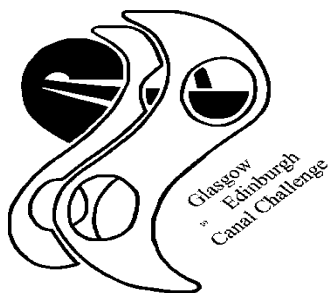
Young and Novice paddlers – It is the responsibility of team leaders to ensure that young and novice paddlers are not over stretched, taking account of dynamic conditions throughout the event.

Welfare and First Aid – Team leaders are responsible for the welfare of all paddlers in their team. A Parental Consent form and emergency contact details should be held for all team members under the age of 16 years who are not accompanied by a parent/carer. Any involvement of Emergency Services must be notified to the Chief Official as soon as reasonably practical.

Emergency phone no. – Team leaders should ensure that all their support crew and team members are aware of the event Emergency Phone Number.

Withdrawals – Team leaders must ensure that withdrawals from the race are reported to the Timekeepers / Marshalls at the next mobile checkpoint, or by phone to the Chief Official as soon as possible.

G-E 2025



PADDLE
SCOTLAND



Chief Official & Emergency Phone 07484655525

Event Information (please read in conjunction with the G-E race rules document)

**G-E
2025**

E
v
e
n
t

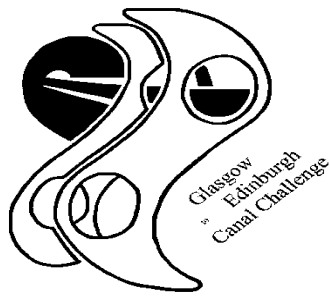
I
n
f
o
r
m
a
t
i
o
n



The start on Saturday is at Speaker Martin's Lock, Speirs Wharf, Glasgow G4 9TJ
dreams.slick.refers

It is not possible to leave vehicles here after the start as the area will be locked at midday after the final boat starts. There is limited car parking at the start on Saturday and it is important that the local parking restrictions around the housing are observed.

G-E 2025



PADDLE
SCOTLAND



Chief Official & Emergency Phone 07484655525

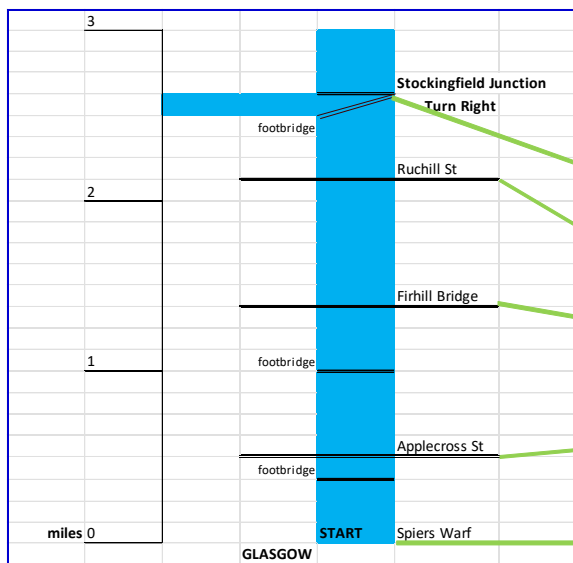
Event Information (please read in conjunction with the G-E race rules document)

Stockingfield Junction – right turn c.2.5miles / 4km from the start

**G-E
2025**

E
v
e
n
t

I
n
f
o
r
m
a
t
i
o
n



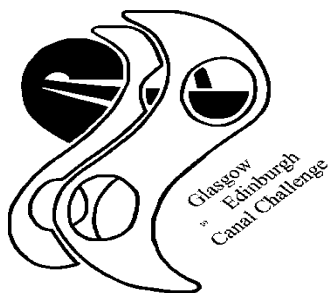
Approaching the new footbridge at Stockingfield Junction.



Turning right under the footbridge.



G-E 2025



**PADDLE
SCOTLAND**



Chief Official & Emergency Phone 07484655525

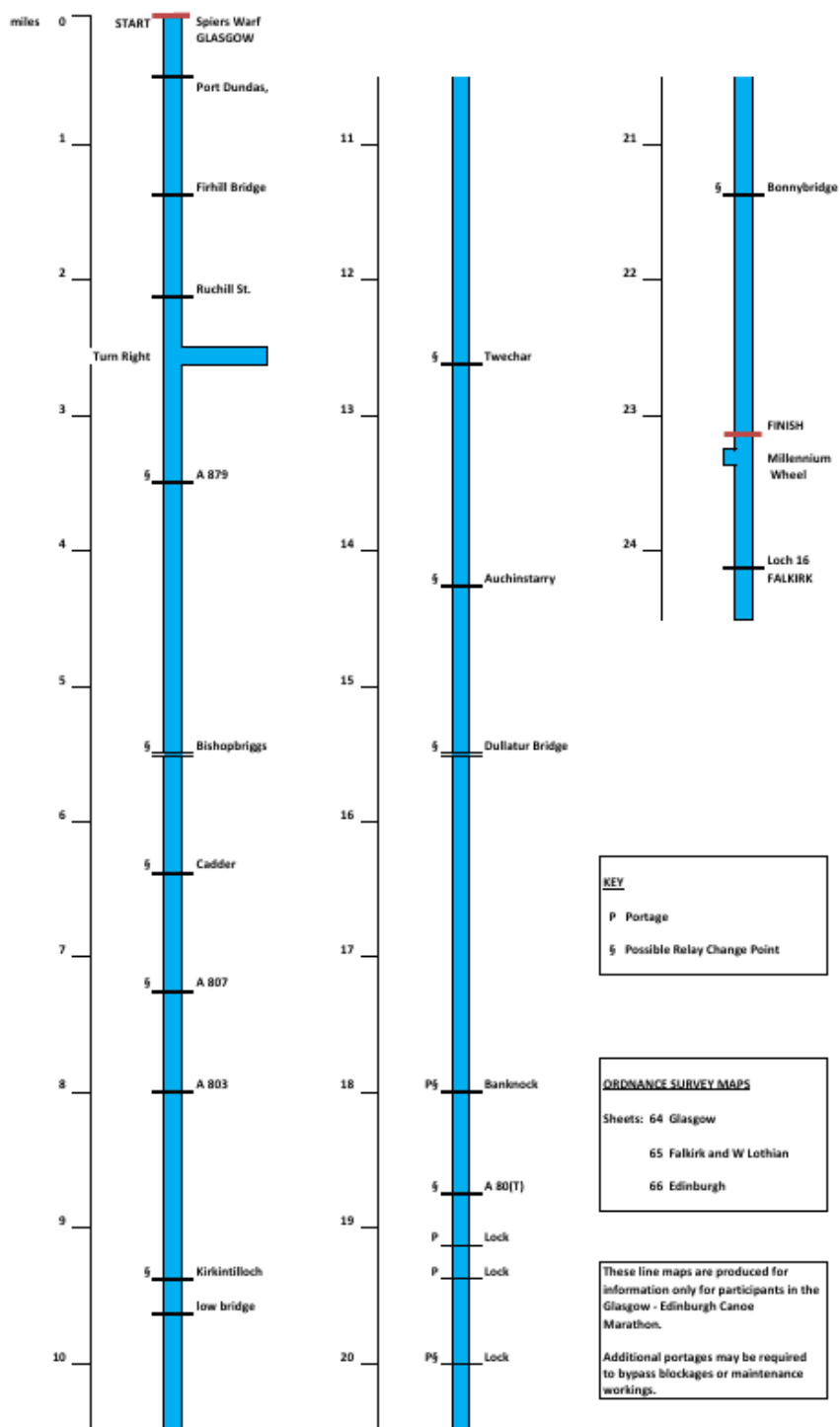
Event Information (please read in conjunction with the G-E race rules document)

**G-E
2025**

**E
v
e
n
t

I
n
f
o
r
m
a
t
i
o
n**

DAY 1 GLASGOW to FALKIRK FORTH and CLYDE CANAL



G-E 2025



PADDLE
SCOTLAND



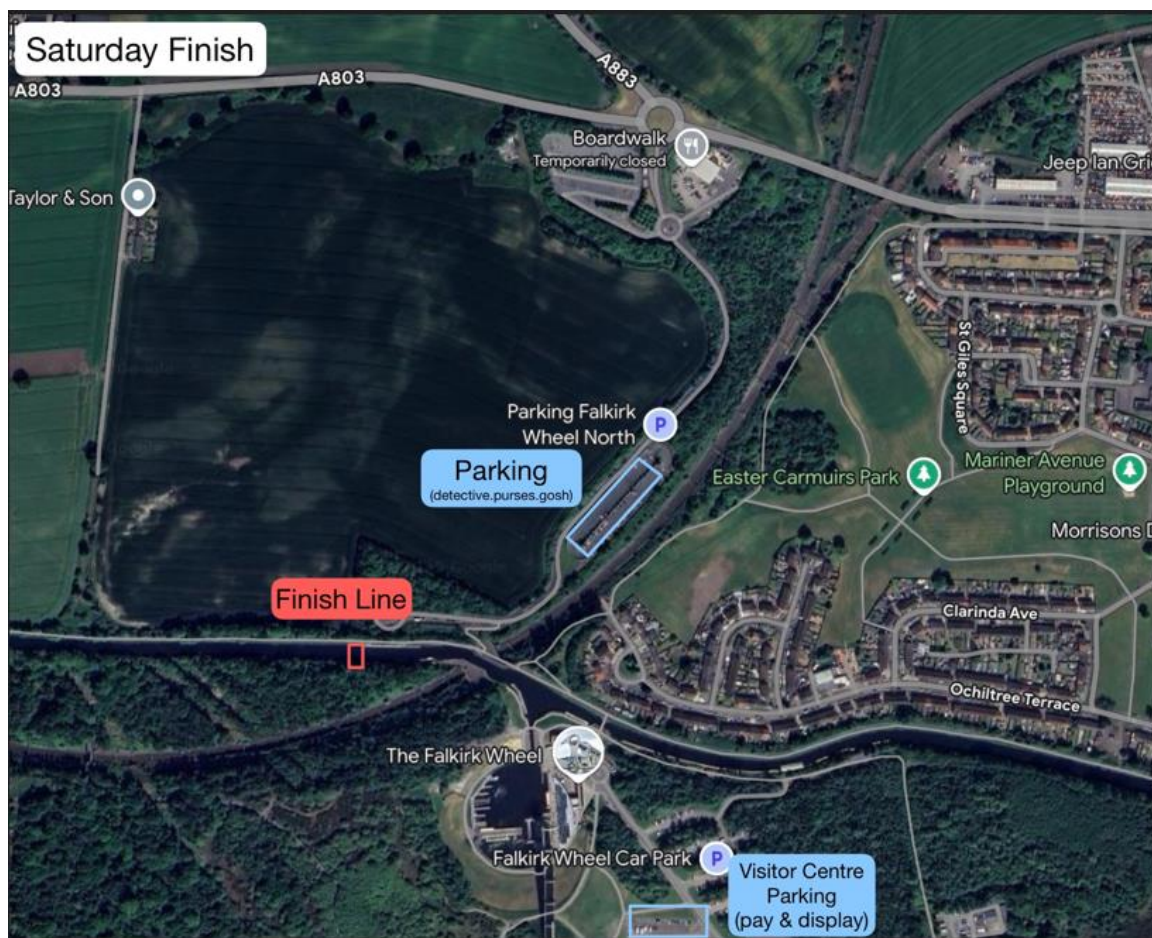
Chief Official & Emergency Phone 07484655525

Event Information (please read in conjunction with the G-E race rules document)

**G-E
2025**

E
v
e
n
t

I
n
f
o
r
m
a
t
i
o
n

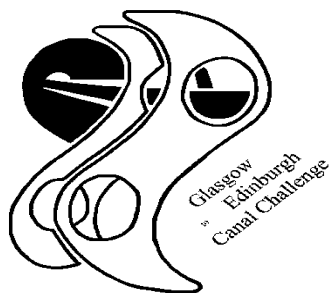


The most convenient parking area on Saturday is in the Falkirk Wheel parking on the North side of the canal rather than in the Falkirk Wheel Visitor Centre car parking on the south side.

For access to the north car park, when approaching from the west on the A803 or A883 follow the Park & Ride signs at the roundabout on the outskirts of Falkirk. Continue past the Park and Ride and into the public car park.

Take care as there is a height restriction on this car park. Higher vehicles can continue past the car park to the drop off area.

G-E 2025



PADDLE
SCOTLAND



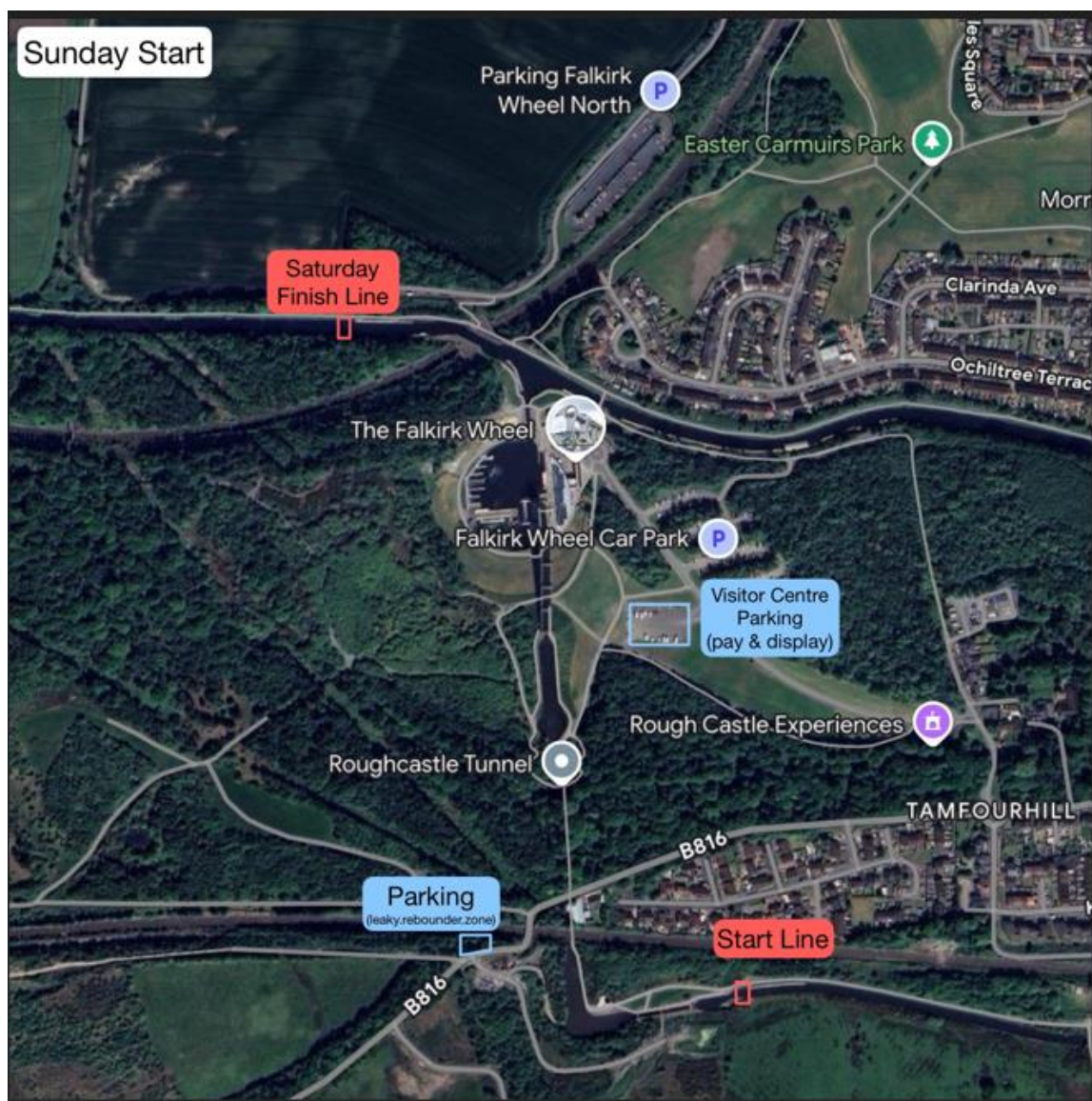
Chief Official & Emergency Phone 07484655525

Event Information (please read in conjunction with the G-E race rules document)

**G-E
2025**

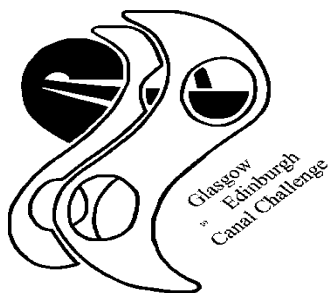
E
v
e
n
t

I
n
f
o
r
m
a
t
i
o
n



The finish on Saturday is on the Forth & Clyde Canal and the Sunday start is on the Union Canal. The access track to the Sunday start and parking is marked above. It is possible to drive the c.400m along the track and park at the locks adjacent to the start line but it is not possible to leave vehicles here after the start as the compound will be locked. Vehicles can be left in the visitor centre car park from where it is possible to walk through the tunnel to get to the start.

G-E 2025



**PADDLE
SCOTLAND**



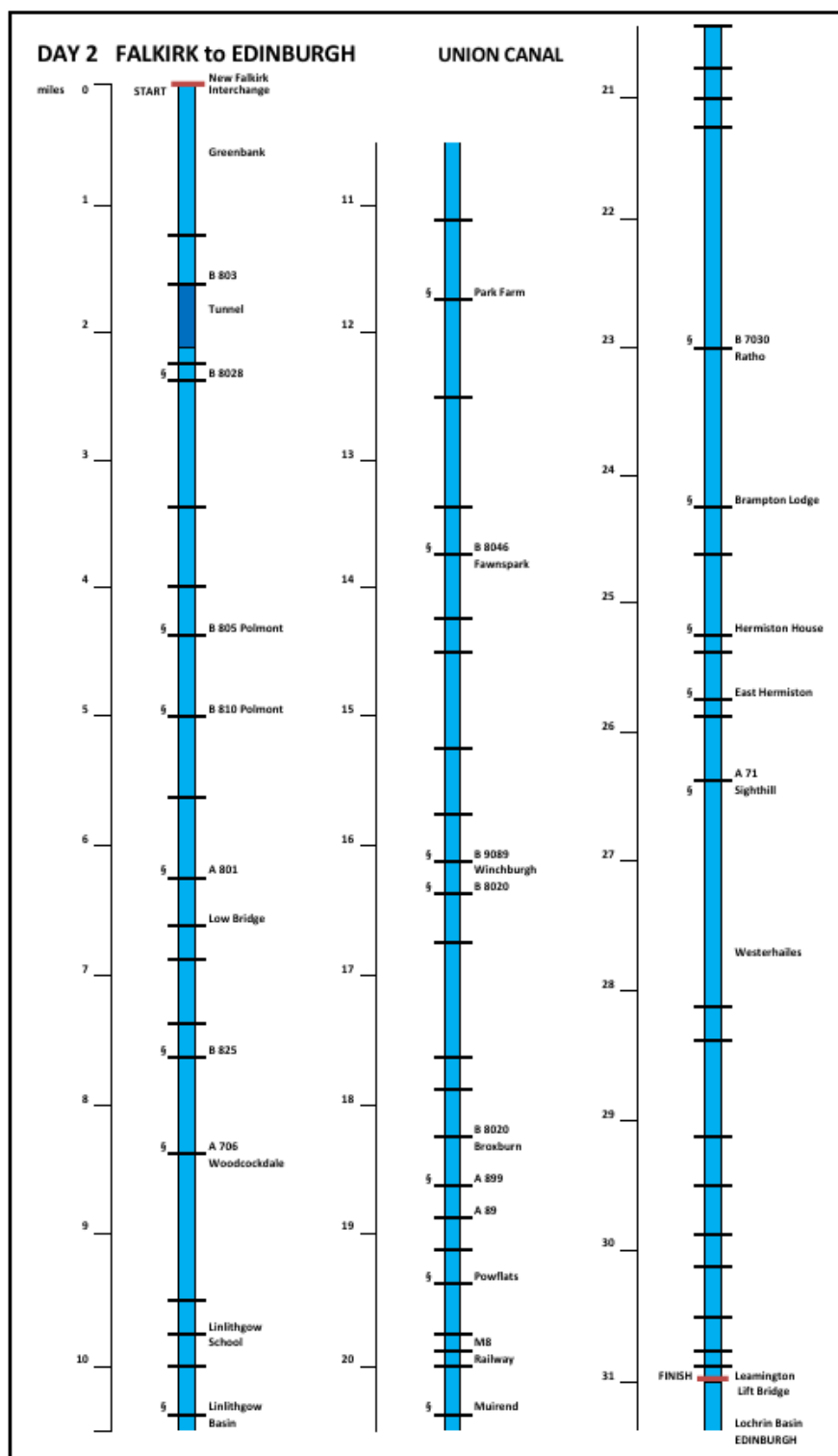
Chief Official & Emergency Phone 07484655525

Event Information (please read in conjunction with the G-E race rules document)

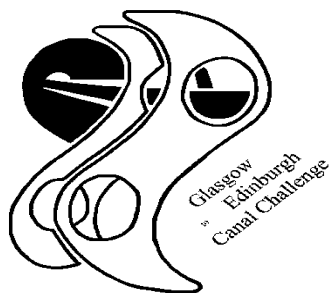
**G-E
2025**

**E
v
e
n
t

I
n
f
o
r
m
a
t
i
o
n**



G-E 2025



PADDLE
SCOTLAND



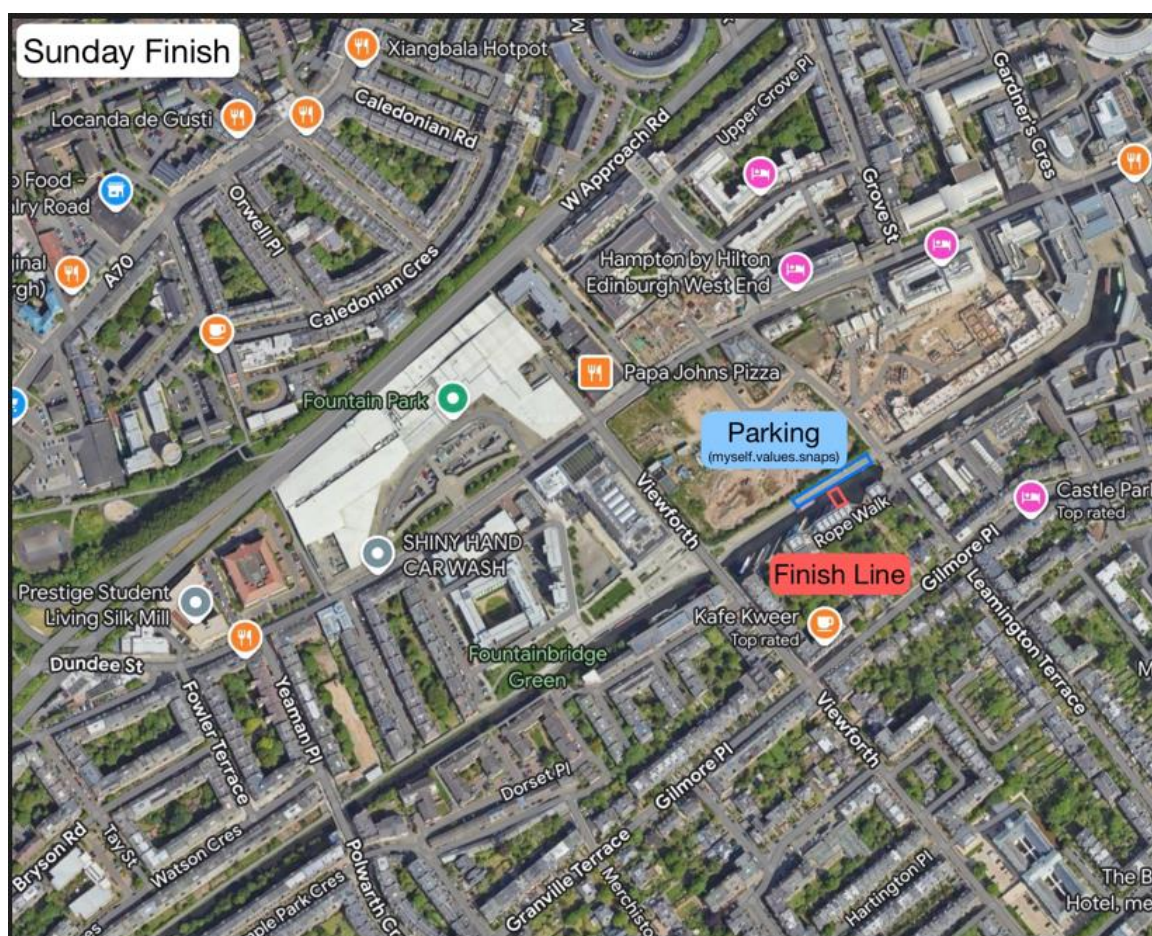
Chief Official & Emergency Phone 07484655525

Event Information (please read in conjunction with the G-E race rules document)

G-E
2025

E
v
e
n
t

I
n
f
o
r
m
a
t
i
o
n



If you wish to do a shuttle at the start of the day on Sunday and leave your car in Edinburgh there is onstreet parking in Gilmore Park which is a dead end road leading to Leamington Lift Bridge from Dundee Street.

From c.2:30pm on Sunday there will be access to park on Scottish Canals land alongside the canal at the finish line. When driving along the canal side you must put on your hazard lights as this is primarily a footpath.