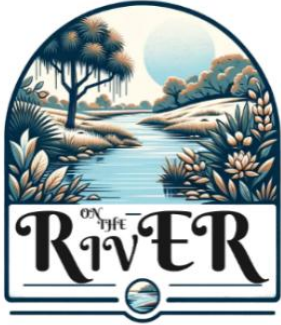


Issue 87, April 2026, Circulation: Over 1,500 subscribers, 12,000 social media readers

As always, please share with anyone. Ken DeWalt, publisher, www.OnTheRiver.org



On The RIVER NEWS

Connecting Caloosahatchee River Communities from Fort Myers Shores to LaBelle
For all our NEIGHBORS and NEIGHBORHOODS

TO SUBSCRIBE, offer articles, or to contact the publisher/editor with any questions, email:
kendewalt@ontheriver.org

The deadline for receipt of any materials is the 20th of the month. Issues go out before the 1st of each month, and may be edited.

See our commercial advertising terms on the last page of this newsletter. We encourage all subscribers to consider patronizing the paid advertisers. Their support of our mission helps us provide you with local news every month.

FEATURED IN THIS MONTH'S OTR

LOCAL NEWS, Page: 2

Contributing Columnists: Page: 6

ALVA, Page: 14

BUCKINGHAM & FORT MYERS SHORES, Page: 20

LABELLE AREA, Page: 26

NORTH FORT MYERS & NORTH OLGA, Page: 31

FOR ALL OF US, Page: 33

SOME LOCAL CHURCHES, Page: 51



Katrina Salokar

The area we cover for news and non-profit events



- 1 -

Access link to our ARCHIVE of ALL OTR issues from day 1:

<https://www.ontheriver.org/archive>

LOCAL NEWS



Motorists who travel across the Wilson Pigott Bridge should prepare for a temporary full closure anticipated in mid-April to allow crews to install a new bridge deck as part of the ongoing replacement project.

The Florida Department of Transportation (FDOT) originally considered a March start date; however, the timeline has been adjusted due to the fabrication and delivery schedule of the specialized bridge deck materials. The deck grating is currently being manufactured and must also undergo galvanizing before it can be delivered to the project site. Based on the latest production schedule, delivery is expected the week of March 30.

Once materials arrive, FDOT will confirm the exact closure date and provide advance notice to the public.

When construction begins, the bridge will be fully closed to all traffic for approximately 10 days to allow crews to safely install the new deck. During the closure, all vehicles—including passenger cars, commercial trucks, buses, and delivery vehicles—will be required to follow the posted detour.

Local businesses located just south of the bridge remain open during their regular business hours and are accessible from SR 31 traveling northbound from SR 80.

Emergency services personnel, including fire rescue, law enforcement, and EMS, will be strategically staged on one side of the bridge throughout the closure to ensure emergency response capabilities remain in place.

Motorists should plan for additional travel time and follow the posted detour route, which will direct traffic to Interstate 75 to cross the Caloosahatchee River as an alternative to Babcock Ranch Road/State Road 31.

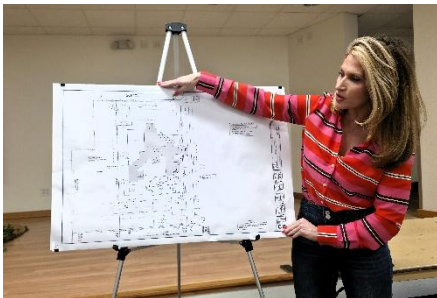
FDOT understands the importance of keeping the public informed and will continue providing updates as construction schedules are finalized. For real-time traffic information, motorists are encouraged to visit FL511.com.

A MAJOR NOTE TO BOATERS:

Contact FDOT for warnings of falling debris.

While the bridge deck is being repaired the entire waterway, Atlantic to the Gulf of Mexico, will be closed to any tall craft.

ALVA INC resident's meeting learns of more new homes planned on North River Road, SR 78



On Tuesday evening March 10 the members of ALVA INC met at their usual monthly meeting at the Alva Community Building to hear Alexis Crespo, Land Use Planner for RVI tell us of a new home development being sought for North River Road, west of Alva, and updates on two other projects.

Bob Case of LAS Engineering joined her on the first project discussed. The former site of the Woodworkers of the World organization meeting

building on Packing house Road south of the Alva Diner and under the current east west high electric lines which follow the original railroad grade from Fort Myers to Labelle of the 1030's and 40's.

The owners, represented by Ms. Sonya Sanchez at this meeting, who purchased the land several years ago, made many errors in environmental destruction, building without permits, etc.

They were given a zoning change to commercial use, build their first plan, a two-acre event center. The site has been empty for several years since.

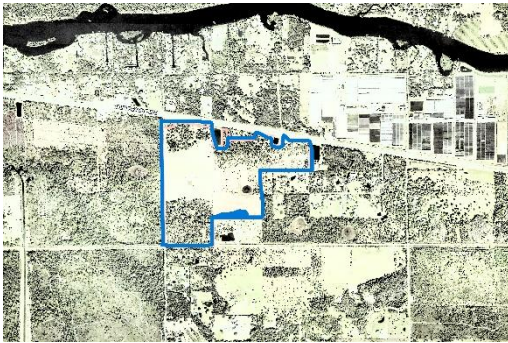


Now, however, a restoration plan will be part of rezoning again and the site must be emptied of all incorrect bldgs. and plants and trees to replace what was destroyed.

Their primary business is as an aluminum installer, not fabricator, so they wish to have a small warehouse, office and some vehicles on the property. There will be no customer traffic here, and no outdoor storage.

This is a 1.88 +/- acre site located at 2850 Packinghouse Rd. Alva, FL 33920 (Parcel ID: 27-43-27-00-00066.0000).

ALVA INC will share more information as it comes to them.

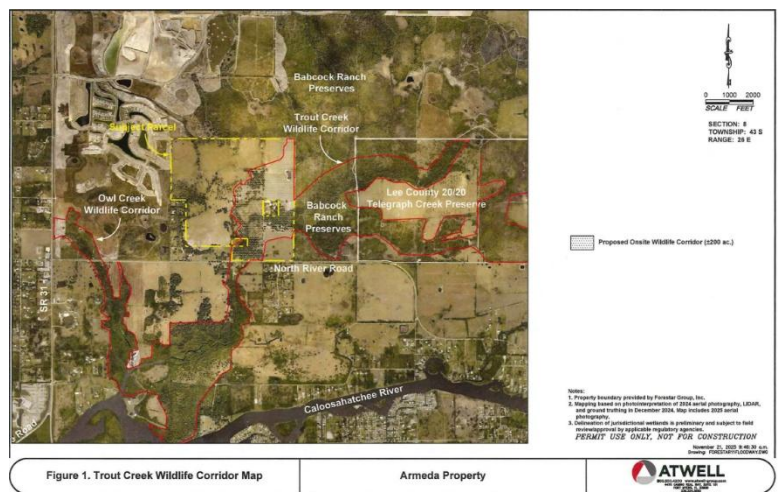


The next discussion centered around another familiar proposal, Calusa 80. 200 acres located at Palm Beach Boulevard SR80 and Bateman Road. The original owner, Stan Whitcomb wanted to put in an RV resort here but later sold it to Neal Developers to develop 690 units, no RVs, and all homes would be single family detached. The plan still allowed Stan to build a small retail strip along Rte 80.

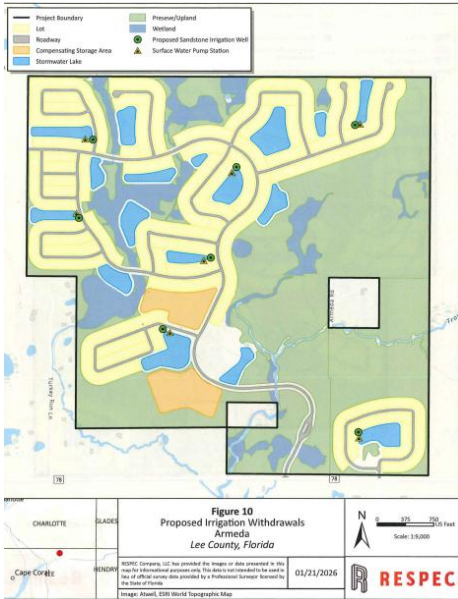
Neal's largest project in Northeast Lee County is still the Cary-Duke land on North River Road, SR78. The only news for ALVA INC was the name change from Cary Duke to Siver Strand. As Babcock Ranch builds south of the Charlotte-Hendry county line other developers begin to gather, and owners of several generations plan how they may turn their cattle range into villa/duplex, 35-foot frontage new homes.

The final item on the agenda for the evening was the new Rezone (DCI2025-00019) of the Suzanne Armeda property on the north side of SR78 from Agricultural (AG-2) to Residential Planned Development (RPD) to allow for the development of a maximum of 737 single-family dwelling units, private, on-site recreation facilities and supportive infrastructure.

FOURSTAR.DEVELOPER, (a DR Horton Affiliate)



There is a small portion of the land, see the lower right corner of the layout) that will be retained under Armeda ownership with an entrance and exit onto rt 78 where only 56 homes will be permitted.



People have asked for all of the years these projects have been planned, “Where will water and sewer come from?” The county now responds emphatically ACROSS THE RIVER, from county wells and new processing plants.

None of the near 10,000 homes discussed this evening will have wells or individual septic. Meanwhile water infrastructure breaks, shortages, and now a year long drought make the question more important by the month.

Much more to come on this project. And several more sellers on the north side of Rte 78 are expected to sell or file for rezoning to build more homes.

IF the water and sewer comes.

ALWAYS



REMEMBER

Contributing Columnists

Improve ANY meeting you LEAD or ATTEND!

By Laurie Dougherty,

Community Meeting Facilitator and Trainer

Laurie@Dougherty-Inc.com



Six Thinking Hats: A Simple Way to Keep Meetings from Going in Circles

Have you ever been in a meeting where people are arguing from different angles — and no one even realizes it?

One person is worried about risks.
Another is excited about possibilities.
Someone else just wants the data.
And a few people are reacting emotionally.

The discussion feels tangled.
That's where the Six Thinking Hats method can help.



Created by Edward de Bono, this approach gives a group a clear structure for thinking together. Instead of debating all angles at once, everyone "wears the same hat" at the same time. The group looks at one type of thinking before moving to the next.

Here's what the hats represent:

White Hat – Facts - What information do we have? What data is missing?
Red Hat – Feelings - What are your gut reactions? Concerns? Excitement?
Black Hat – Caution - What could go wrong? What risks should we consider?
Yellow Hat – Benefits - What are the advantages? What might work well?
Green Hat – Creativity - What new ideas or alternatives could we try?
Blue Hat – Process - What's our goal today? What's our next step?

Why this works....

When everyone focuses on the same "hat," the conversation becomes more organized. Instead of arguing, the group explores. Instead of reacting, people think together.

It also helps quieter participants. They don't have to jump into a debate. They know exactly what kind of input is needed at that moment.

You don't need real hats. The key is discipline. Stay in one hat at a time.

You'll notice something interesting: conflict decreases. Participation increases. The thinking feels cleaner.

If your meetings sometimes feel like everyone is rowing in different directions, Six Thinking Hats is a practical way to get everyone paddling together.

Author: Laurie Dougherty is a professional facilitator and trainer specializing in helping groups run more effective and engaging meetings. With years of experience in leadership training and community engagement, Laurie provides practical, easy-to-implement strategies to improve group discussions. Laurie has made Alva her home since 2021.

RAMONA RECOMMENDS

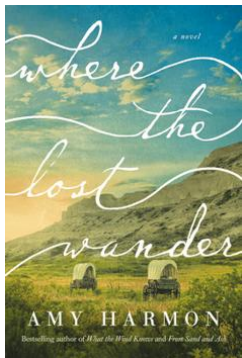


By Ramona DeWalt, Oak Park, Alva, Florida MonaDeWalt1@gmail.com

Mona spent 13 years with Borders Books before she opened her own 5,000 square foot GENTLY USED BOOK Store in Douglassville, Eastern PA, then sold it. The new owner changed the name and added new titles then added a second location, [storehttps://starrbookstore.com/](https://starrbookstore.com/)

Ramona retired along with her husband, Ken, in 2014 and has since made it her purpose to help others learn the joys of reading from helping to build the Children & Youth Library at Charleston Park

You may contact her via email at MonaDeWalt1@gmail.com



Where the Lost Wander by Amy Harmon

"The trail may take their lives....or lead them home."

The Overland Trail, 1853: Naomi May never expected to be widowed at twenty. Eager to leave her grief behind, she sets off with her family for a life out West. On the trail, she forms an instant connection with John Lowry, a half-Pawnee man straddling two worlds and a stranger in both.

But life in a wagon train is fraught with hardship, fear and death. Even as John and Naomi are drawn to each other, the trials of the journey and their disparate parts work to keep them apart. John's heritage gains them safe passage through hostile territory only to come between them as they seek to build a life together.

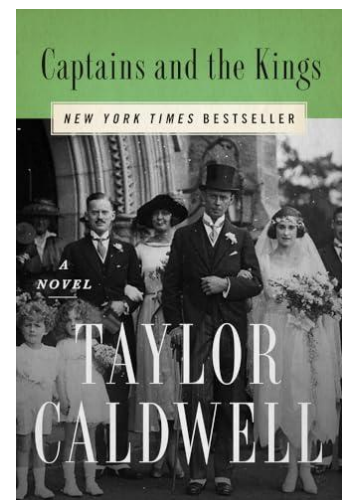
Based on real people and real events and the lives of the author's husband's ancestors.

Captains and the Kings by Taylor Caldwell

In turn-of-the-19th century America, an immigrant family thrives through grit, fortitude, and hubris.

Sweeping from the 1850's through the early 1920's, Captains and the Kings is a towering family saga about the price of ambition and power from one of the American literature's most captivating storytellers.

Published in 1972, the story has amazing parallels to today.



Southwest Florida Cooking by

MAGGIE McMann

of Oak Park, Alva

Contact Maggie to find out more at: Magg1rn@att.net



Key lime icebox pie

Ingredients.

- 2 cups crushed graham cracker crumbs
- 1/2 cup butter melted
- 5 tablespoons sugar divided
- One cup cold, heavy whipping cream
- 1 teaspoon vanilla extract
- 8-ounce package cream cheese softened
- 14 ounce can Eagle brands, milk
- 2 tablespoons tightly packed lime zest
- 1/2 cup Key lime juice
- Green liquid food, coloring optional
- Sweet whipped cream
- Garnish, thin sliced lime slices

Directions

Preheat oven to 350

Stir together, cracker crumbs, melted butter, and 3 tablespoons sugar in a medium bowl. Press mixture into bottom and up sides of a 9-inch-deep dish pie plate using the bottom of a measuring cup

Bake until golden about 10 minutes and then cool completely



Place, cold cream, vanilla, and remaining 2 tablespoons of sugar in the bowl of a stand mixer fitted with a whisk and gradually increase the speed to medium high beating until stiff peaks form should take about two or three minutes. Transfer to a large bowl.

Clean bowl of stand mixer. Using the paddle attachment, beat the cream cheese at a medium low speed until smooth about one to two minutes. Add the condensed milk, lime, zest, and juice, and two drops of food coloring. Be at medium speed until well combined about three minutes.

Fold in whipped cream mixture. Spoon into the prepared crust. Cover with plastic wrap and refrigerate four hours or overnight.

Spread sweetened whipped cream onto the pie just before serving and garnished with thin, sliced limes.

The COLORADO CORNER

For a taste of nature that does not thrive at near sea level this new OTR column comes from wildlife photographer James DeWalt, our son, who has lived in his 9,000 ft high village of Nederland, Colorado for over 25 years. He is an avid wildlife and nature photographer, and we thank the MOUNTAINEER, his local newspaper, for allowing us to share some of his articles which he creates for them.



Itching For Spring

Raggedy Moose and the Winter Ticks

Emerging from winter is often symbolized by a scruffy and unkempt look due to being pent up in the cabin for months. So too does our wildlife carry a similar raggedy look as they transition from winter to summer coats. One species that tends to gain the most attention is our moose, sometimes seen with alarmingly whitened and patchy fur.

No, this is not a normal stage of their shed, nor is it mange or disease. It is also not a cause for a call to CPW to come check on the health and well-being of

the animal. It is the result of a long winter of dealing with a nasty parasite known as the winter tick.

While these ticks can affect several different species of critters, moose tend to be the most common host. This is likely due to their size and ability to maintain a food source for the entire winter.

Many different types of ticks tend to utilize multiple hosts for each stage of their life cycle. Winter ticks differ in that they remain on the same host animal for their entire feeding existence.

Eggs begin hatching in the late summer and early fall, with larvae climbing vegetation in search of a passing host. Once found, they will transition throughout winter to their nymph (mid-life) stage, and then into adulthood. By early spring they maximize their feeding just before dropping off. They will then return to the leaf litter and pine duff to lay their eggs for the next fall before dying.

Infestations can number into the tens of thousands on a single moose. As we know well, a tick's food is blood. The older they get, the more they consume, which can be extremely detrimental to the life of the moose.

Massive blood loss is commonly followed by malnutrition and weight loss. At the same time the ticks are feeding the most in the late winter to prepare for egg laying, the moose's forage has its lowest nutritional value. This adds a much more difficult hurdle to recovery and can often spell the demise of younger animals.

Once the body runs out of fat stores, it turns to muscle mass for sustenance. Calves with larger infestations can lose up to 30% of their body weight, and by spring can reach mortality levels of loss. Adults tend to fare better, with greater weight and muscle mass from which the ticks and body can feed on.

Another mortality factor is due to the incessant itchiness of it all. The irritation of the ticks causes the moose to scratch, sometimes incessantly. This begins the process of hair loss, which can prove fatal in the winter. By spring, the loss is such that they can rub down to bare skin, and white fur is the resulting broken and dead underlayer laid bare from endless scratching.

Thankfully, most adults seen at this stage will recover. The ticks will soon fall off, and they will finally be able to begin their recovery, usually returning to normal health. By early summer they are showing off their shiny new summer coat.

Here in Colorado, infestations are common, but thankfully nowhere near as detrimental to the overall population. In New England, the infestations have caused mortality rates in calves to reach levels as high as 70-90%, decimating their numbers. The sight of these white, semi-hairless and greatly emaciated creatures has born the name "Ghost Moose".

If you see them here, have heart knowing they will likely be just fine and survive without much issue. It is also comforting to know that these ticks do not carry disease, and they do not affect humans (or our pets) in any way. Know that we can all safely share space (from a safe distance, of course) and show off our raggedy spring selves in all its glory!

For additional information about James DeWalt Photography, check out <https://jamesdewaltphotography.com>

Please consider supporting our paid advertisers below with your business. They are supporting the mission of ON THE RIVER for you.

(Paid Ad – 12/26)



GROW YOUR BUSINESS IN SW FLORIDA!

EAST LEE COUNTY NEWS is a monthly direct mail local newspaper for the Daniels Corridor, Gateway, Lehigh Acres, Alva, Buckingham, and The Shores areas! Advertise in the East Lee County News to reach our 20,000+ direct mail readers and up to 2,500 more from our free pickup locations. Share news and special offers with consumers every month!

ADVERTISE IN THE ROAR

NOW SERVING

33936 • 33971 • 33972 • 33974 • 33913 • 33966 • 33912
ALVA • MOST OF BUCKINGHAM AND THE SHORES

2024 THE EAST LEE COUNTY NEWS RATE TABLE

*Ask about our Island Ads!
Custom Sizing & Premium Placement

AD SIZES	FULL PG	3/4 PG	2/3 PG	1/2 PG	1/3 PG	ISLAND*	1/4 PG	1/6 PG	1/8 PG	BUSINESS BILLBOARD
OPEN	1850	1525	1445	1045	760	PCI	575	445	325	1x Business Card \$145
3 TIMES	1640	1425	1280	930	720	PCI	530	420	310	
6 TIMES	1475	1260	1170	900	675	PCI	515	390	300	2x Business Card \$190
12 TIMES	1325	1130	1040	825	610	PCI	490	360	285	



(239) 470-5611 | PRESS@EASTLEENews.COM | WWW.EASTLEENews.COM

(Paid Ad – 4/26)



CAPABILITY. COMMITMENT. COMMUNITY.
CALL FOR A FREE QUOTE



GOODLAD & SWANK
INSURANCE, LLC

Why Not Insure It All Under One Roof?



239-674-7630

www.goodladandswank.com

702 Leeland Heights Blvd W Lehigh Acres, FL 33936

(Paid AD – 6/26)

Manatee & Eco River Tours

March through November – join us for an ECO RIVER TOUR where we leave from Sweetwater Landing Marina on SR 31 in Fort Myers and travel eastbound on the Caloosahatchee River through the original river course (oxbows) learning of the history of the area. Travel through the W.P. Franklin Locks and then return to the marina after a lovely 2-hour narrated cruise.



SUNSET CRUISE!

Join us for a sunset cruise from Sweetwater Landing Marina going westbound on the Caloosahatchee River. A nice spread of hors d'oeuvres is provided along with water and soda. You are welcome to bring your own beverage if you'd like. Enjoy a leisurely cruise on the Caloosahatchee, watch the birds come into rest for the night and enjoy the spectacular southwest Florida sunsets!



All tours leave from Sweetwater Landing Marina located at 16991 S.R. 31, Fort Myers, FL 33905

To book visit our website at: www.ManateeAndEcoRiverTours.com

(Paid Ad-5/26)



Patricia (Patty) Walker
REALTOR®
Referrals welcome!

239-340-3904
PattyWalkerREMAX@gmail.com

RE/MAX GULF COAST LIVING
12928 Palm Beach Blvd Ste C
Fort Myers, FL 33905

Each  Independently Owned and Operated



Earth Day is EVERY DAY

ALVA EVENTS And Services



ALVA INC



21471 N River Rd, Alva, FL 33920

ZOOM access: <https://zoom.us/join>

Meeting ID: 852-1643-8980 Passcode: 302401

Info@AlvaFL.org www.ALVAFL.org NEXT MEETING: Every Second Tuesday, 7pm, Alva Community Center



Alva Fire Control & Rescue Service...

2660 Styles Road, Alva, FL

Sunday • April 12, 2026

📍 2660 Styles Road
Alva, Florida

🕒 Serving starts 11:30 AM
— Until sold out —

\$13.00 BBQ PLATE

- Slow-Grilled BBQ Chicken
- Baked Beans
- Creamy Coleslaw
- Roll & Drink



LVA USS HANNAH CHAPTER

<https://usshannahnsdar.org/>



Alva Fire Protection & Rescue Service District

Join Our Team!



BENEFITS

- Florida Retirement System
- Medical, Dental & Vision Insurance
- Employee Health & Wellness
- Uniform Maintenance Allowance
- College Degree & Cert Incentives
- Training Allowance
- Salary Progression Base on Industry Years of Service

OPPORTUNITIES

- Marine Operations
- Public Outreach
- Career Advancement
- Special Events

REQUIREMENTS

- Valid Driver's License
- Good Driving Record
- Fl. Bureau of Fire Standards & Training Certification
- Alva CPR/First Provider
- Pass a Physical Assessment
- Current EMT Certification

The Alva Fire District is seeking qualified applicants for the position of **Firefighter/EMT**. The individual should demonstrate good moral character and judgement, be able to handle high pressure situations and display effective problem solving and leadership skills. The Alva Fire District consists of a tobacco and drug free workplace environment. Experience preferred.

Please forward a current resume, application and certs to Chief Echeverry at jetechevry@alvafirecontrol.org or drop-off your resume to Firehouse 121, 2680 Styles Road, Alva, Florida between the hours of 9 AM - 4 PM. Applications and Acknowledgement & Full Release of Liability may be downloaded from the District's website at www.alvafirecontrol.org. Applications accepted through March 23, 2025.



Alva Youth Baseball League is in full "swing" and parking can be a but challenging at the Community Center. There is additional parking behind the ball field as shown in the image below. Please utilize that as needed. The closer to 7pm you arrive at the park, the more likely there will be available parking.



BUCKINGHAM YOUTH BASEBALL

SPONSORSHIPS

ALVA & BUCKINGHAM

<p>DOUBLE</p> <p>WEBSITE LOGO SOCIAL MEDIA MENTIONS LOGO ON GROUP BANNER</p> <p>\$150</p>	<p>TRIPLE</p> <p>WEBSITE LOGO SOCIAL MEDIA MENTIONS LOGO ON GROUP BANNER LOGO ON TEAM BANNER PLAQUE</p> <p>\$300</p>
<p>HOME RUN</p> <p>WEBSITE LOGO SOCIAL MEDIA MENTIONS LOGO ON GROUP BANNER LOGO ON TEAM BANNER PLAQUE 3X5 INDIVIDUAL BANNER</p> <p>\$600</p>	<p>GRAND SLAM</p> <p>WEBSITE LOGO SOCIAL MEDIA MENTIONS LOGO ON GROUP BANNER LOGO ON TEAM BANNER PLAQUE 3X5 INDIVIDUAL BANNER 6X10 BANNER IN OUTFIELD</p> <p>\$1000</p>




SCAN FOR MORE INFORMATION OR EMAIL
SPONSORSHIPS@BUCKINGHAMYOUTHBASEBALL.NET

BUCKINGHAM YOUTH BASEBALL IS A 501(c)3 ORGANIZATION
TAX EXEMPT FORMS AVAILABLE UPON REQUEST



The Alva Library Museum

21420 Pearl St, Alva, FL
33920



Public Library, Alva

Originally a public library built in 1909, it now serves as a museum of artifacts from the original settlers. The library-museum Board is making the building available as small group venue for parties, clubs, etc.

THE LIBRARY IS OPEN FOR FREE TOURS Every Saturday between 10am and 2pm

See a virtual video tour of the Museum at: <http://alvaflmuseum.com>

Grant Fichter is overseeing the museum for the board.

ALVA GARDEN CLUB

Each month we have special speakers presenting interesting and relevant information. We also plan field trips that enhance our knowledge and inspire good garden practices.



Membership in the Alva Garden Club is still only \$10 per person. We meet in the Alva Methodist Church Fellowship Hall the 3rd Tuesday of each month at 1 pm.

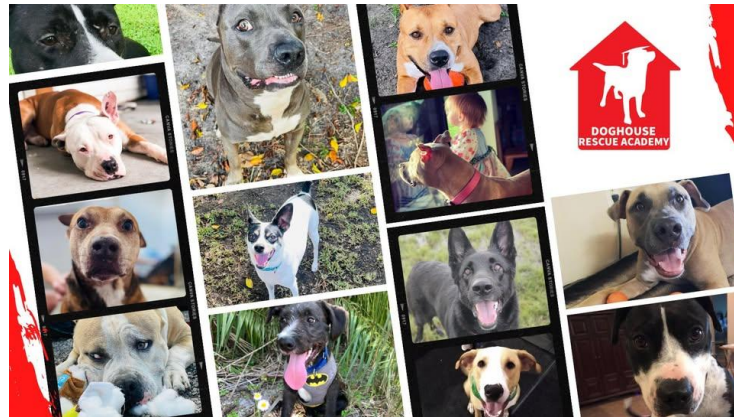




Charleston Park Neighborhood Association

2541 Charleston Park Drive, Alva, FL 33920. 239-728-8895
Charlestonpark1926@gmail.com

Community Center Activities & Training, Lee County Children's and youth sport park, Events throughout the year, Meetings for all every second Monday of the month at 6pm at the Community Center are also available virtually via ZOOM.



We are Doghouse Rescue Academy - a 501(c)(3) nonprofit organization in Alva focused on helping make the world around us a better, happier place. We are a network of foster-based rescuers whose sole mission is to help adoptable dogs find homes.

Let us help you find your happily "fur" ever after!

<https://doghouserescueacademy.org/>

<https://www.facebook.com/DogHouseRescueAcademy/>



ALVA MIDDLE FFA

Find us on **FACEBOOK**



[https://www.facebook.com/AlvaMiddleFFA/?show_switched_toast=0&show_invite_to_follow=0&show_switched_tohttp=0&show_podcast_settings=0&show_community_review_changes=0&show_community_rollback=0&show_follower_visibility_disclosure=0](https://www.facebook.com/AlvaMiddleFFA/?show_switched_toast=0&show_invite_to_follow=0&show_switched_tohttp=0&show_podcast_settings=0&show_community_review_changes=0&show_community_rollback=0&show_follow_visibility_disclosure=0)

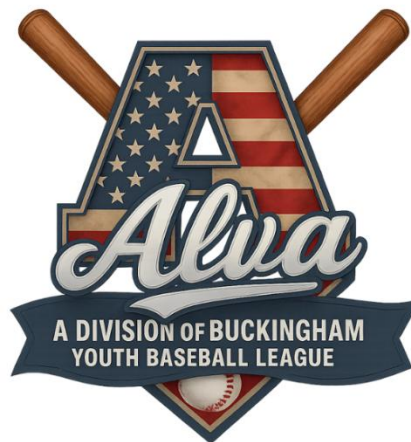


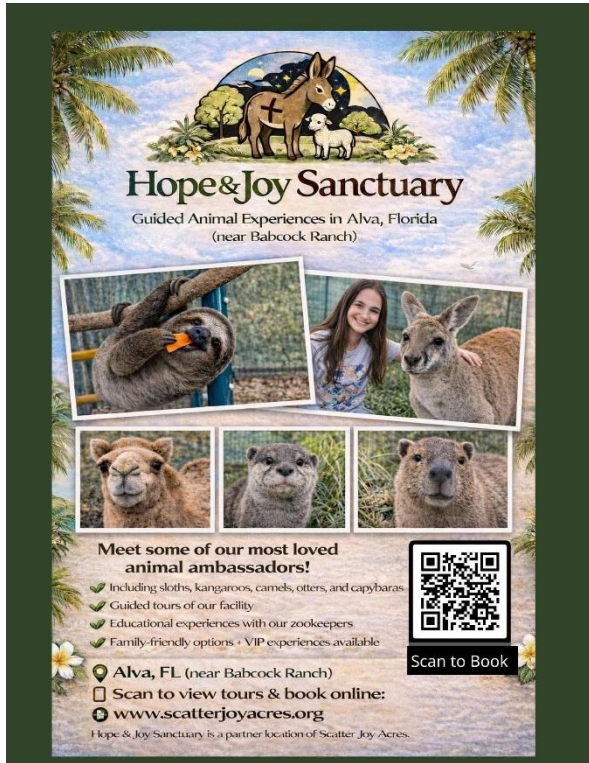
Alva Middle FFA Chapter (L to R) Florida State Fairgrounds.
Florida State Fairgrounds.
So excited to be at this year's COTY Conference in Tampa at the Florida State Fairgrounds. The annual Chapter Officer Leadership Training is a great way for officers to further their leadership skills, build relationships with other Florida FFA Chapter as well as bring new ideas to their chapter.

Buckingham Youth Baseball has partnered with ALVA INC to create and oversee a NEW

ALVA YOUTH BASEBALL LEAGUE

<https://buckinghamyouthbaseball.sportsengine-prelive.com/page/show/9256737-alva-league>





Hope & Joy Sanctuary
Guided Animal Experiences in Alva, Florida
(near Babcock Ranch)

Meet some of our most loved animal ambassadors!

- ✓ Including sloths, kangaroos, camels, otters, and capybaras
- ✓ Guided tours of our facility
- ✓ Educational experiences with our zookeepers
- ✓ Family-friendly options - VIP experiences available

Alva, FL (near Babcock Ranch)
Scan to view tours & book online:
www.scatterjoyacres.org

Hope & Joy Sanctuary is a partner location of Scatter Joy Acres.

Scan to Book



Rotary Pet Food Pantry
CHARITY GOLF SCRAMBLE

Saturday, May 2, 2026 at 8:30 AM
3rd Annual Golf Tournament
Public · Event by Rotary Club of Fort Myers East

Interested Going

River Hall Country Club
3500 River Hall Pkwy, Alva, FL 33920-6002,
United States · 6 mi



Friday, April 10, 2026 at 7:30 PM
Pete Schlegel @
Riverlandings Motor Coach
Resort
Public · Event by Pete Schlegel

Interested Going

Riverlandings, A Premier
Motorcoach Enclave
5154 Waterfront Way, Labelle, FL 33935, United
States · 4 mi



RiverLandings
A Premier Motorcoach Enclave
Presents
2026
3rd Annual
Car Show

Saturday
April 11, 2026
\$15 Entry Fee
Registration
Opens @ 9am
Awards @ 2pm
Food Trucks will
be on site
Location
5942 FL-80
LaBelle, FL

Free Admission for
Spectators

Awards

- Best of Show
- Resort Choice
- Top 10
- Best Paint
- Best Engine
- Best Interior
- Best Modified
- Best Truck

Dash Plaques for the
first 50 cars registered

50/50 Raffle
For more info call:
(239) 292-0896

Hot Rod
Nights

BUCKINGHAM & FORT MYERS SHORES EVENTS

And Services



FORT MYERS EAST ROTARY CLUB

Fort Myers East Rotary Club has been in existence since 1973, and helps with so many community projects in East Lee County and with District and International Rotary activities.

They meet Wednesday mornings for breakfast at 7:30 AM at the River Hall Country Club. Stop by and join us for an invigorating meeting with good food, stimulating conversation and great speakers! For more information, contact

FMERC.Secretary@gmail.com <https://www.fmeastroty.com/>

Ham Dinner



Thursday, April 9th, 4-7 pm
Ham, scalloped potatoes, coleslaw, baked beans, drink, and dessert

\$10.00 adult \$5.00 child

Eat in or take out

Bethlehem Lutheran Church

14531 Old Olga RD S.E.

Fort Myers, FL 33905

(239) 694-3878

- 20 -

Access link to our ARCHIVE of ALL OTR issues from day 1:

<https://www.ontheriver.org/archive>

Celebrate Buckingham Returns for 76th Anniversary

Spring Fling

The Buckingham Community Association invites the public to attend Celebrate Buckingham – 76th Anniversary Spring Fling, a community celebration honoring Buckingham’s rural heritage and strong neighborhood spirit. The event will take place Saturday, April 11, 2026, from 11:00 a.m. to 4:00 p.m. at the Buckingham Blues Bar, 5461 Buckingham Road in Fort Myers.

This free, family-friendly event will feature local vendors, food, live entertainment, raffles, auctions, and activities for the entire family. Celebrate Buckingham has become a popular annual gathering where residents, local businesses, and visitors come together to enjoy a day of community fellowship and fun.

Proceeds from the event benefit the Buckingham Community Association, a 501(c)(3) nonprofit organization, whose mission is to preserve Buckingham’s unique rural character while supporting programs that strengthen the local community. This year, the association is focusing on improving school bus stops throughout Buckingham, helping make them safer and more visible for local children.

Local businesses and community members are encouraged to participate as sponsors, vendors, or donors. Their support helps fund community projects and keeps Buckingham’s traditions alive for future generations.

Everyone is welcome to attend and enjoy a great day celebrating the Buckingham community.

For additional information, contact Terri Lodge at (239) 989-5690.





Our Mission Statement

The mission of Special Equestrians, Inc. is to enhance physical, emotional, and cognitive growth for individuals with disabilities through equine-assisted activities and therapies. The organization serves people referred to Special Equestrians by doctors, therapists and teachers. The participant application is on this website on the Classes Page. There is a waiting list to ride in the program, although those potential riders who have flexible schedules will be able to ride sooner.

Call Us: 239-226-1221

Email Us: spequestrians@gmail.com

Map Us: 5121 Staley Road Fort Myers, FL 33905

Mailing: PO Box 61528, Fort Myers, FL 33906-1528

Fax Us: 239-226-1279



April In-Branch Events
All library events and programs are free and open to the public.
[Visit Our Online Calendar of Events](#)

Registration is required for events marked with an asterisk (*) and opens 30 days before program date.

For Children

- | | |
|--|--|
| <p>Family Storytime
10 a.m. Friday, April 3, 10, 17
10 a.m. Saturday, April 4</p> <p>Lego Build
1 p.m. Saturday, April 4</p> | <p>Mario Kart Tournament
1 p.m. Saturday, April 18</p> <p>Baby Rhyme Time
10 a.m. Friday, April 24</p> |
|--|--|

For Teens

- | | |
|---|--|
| <p>Anime Hour
2:30 p.m. Tuesday, April 7</p> | <p>Paint a Flowerpot
3 p.m. Tuesday, April 21</p> |
|---|--|

For Adults

- | | |
|---|--|
| <p>Knit and Stitch
1 p.m. Wednesday, April 1, 15</p> <p>Book Discussion: "The Astral Library" by Kate Quinn
10:30 a.m. Thursday, April 2</p> <p>Spanish Conversation Club*
6 p.m. Tuesday, April 7, 14, 21, 28</p> | <p>All Hazards Preparedness with Lee County Emergency Management
10:30 a.m. Thursday, April 9</p> <p>Design Your Own Beach Hat*
1 p.m. Saturday, April 11</p> <p>Navigating Alzheimer's
10:30 a.m. Wednesday, April 22</p> <p>Dungeons and Dragons
2 p.m. Saturday, April 25</p> |
|---|--|

Registration is required for events marked with an asterisk (*) and opens 30 days before program date.

April Online Events

- | | |
|---|---|
| <p>Author Event with Valerie Neal*
2 p.m. Thursday, April 2</p> <p>Beginner Spanish*
6 p.m. Thursday, April 2</p> <p>Photo Identification Techniques*
10 a.m. Wednesday, April 8</p> <p>Author Event with Brad Taylor*
7 p.m. Tuesday, April 14</p> | <p>Author Event with Miranda Cowley Heller*
2 p.m. Wednesday, April 22</p> <p>Beginner Chinese*
6 p.m. Thursday, April 30</p> <p>Author Event with Jason Reynolds*
7 p.m. Thursday, April 30</p> |
|---|---|

BUCKINGHAM

BASEBALL




WEE-BALL

ages 3-5
non-competitive
no evaluation required

T-BALL

ages 5-6
competitive with outs and score
keeping

COACH PITCH

ages 6-7
bridges the gap between T-ball and
machine pitch

ROOKIES

ages 7-8
machine pitch
designed to elevate play and
prepare players for upper
divisions

MINORS

ages 9-10
evaluation required
draft process by coaches for
team placement after evals

MAJORS

ages 11-12
evaluation required
draft process by coaches for
team placement after evals

JUNIORS

ages 13-16
evaluation required
draft process by coaches for
team placement after evals

BASE RUTH LEAGUE, INC.
BIRTH CHART FOR 2026 - BASEBALL DIVISIONS

	2022	2021	2020	2019	2018	2017	2016	2015	2014	2013	2012	2011	2010	2009	2008	2007
January	4	5	6	7	8	9	10	11	12	13	14	15	16	17	18	19
February	4	5	6	7	8	9	10	11	12	13	14	15	16	17	18	19
March	4	5	6	7	8	9	10	11	12	13	14	15	16	17	18	19
April	4	5	6	7	8	9	10	11	12	13	14	15	16	17	18	19
May	3	4	5	6	7	8	9	10	11	12	13	14	15	16	17	18
June	3	4	5	6	7	8	9	10	11	12	13	14	15	16	17	18
July	3	4	5	6	7	8	9	10	11	12	13	14	15	16	17	18
August	3	4	5	6	7	8	9	10	11	12	13	14	15	16	17	18
September	3	4	5	6	7	8	9	10	11	12	13	14	15	16	17	18
October	3	4	5	6	7	8	9	10	11	12	13	14	15	16	17	18
November	3	4	5	6	7	8	9	10	11	12	13	14	15	16	17	18
December	3	4	5	6	7	8	9	10	11	12	13	14	15	16	17	18

All player ages are determined by the birth chart shown above. May 1 in any year shall be the deciding date.

Season of 2026

Cal Ripken - Any player born prior to May 1, 2022 and on or after May 1, 2013 will be eligible for Cal Ripken Baseball League competition.

Any player that turns 4 years old in the months of May, June, July, and August born in 2022 is eligible to participate in the Cal Ripken T-Ball Division.

13-16 - Any player born prior to May 1, 2013 and on or after May 1, 2008 will be eligible for Base Ruth 13-16 League competition.



**SCAN CODE TO
REGISTER NOW**

Please Help Us To Help Them



Abuse Counseling & Treatment, Inc.
Domestic Abuse Shelter



*We are looking for donations of New
OR*



*Gently Used Outdoor Toys
for the Children.*



Cash Donations also Accepted.



They need our help.



*Questions: Please call 239-693-0351
If you can help, please bring items by March 10, 2026 to:
American Legion Auxiliary Unit 351
4800 Palm Beach Blvd., Fort Myers, FL 33905*

MEET THE CANDIDATES!
The candidates for Lee County Board of County Commissioners District 5, representing Buckingham, Alva and Lehigh Acres will address the Buckingham Community


6:30 p.m. Monday, June 22nd
Lee County Mosquito Control, 15191 Homestead Road

 Amanda Cochran

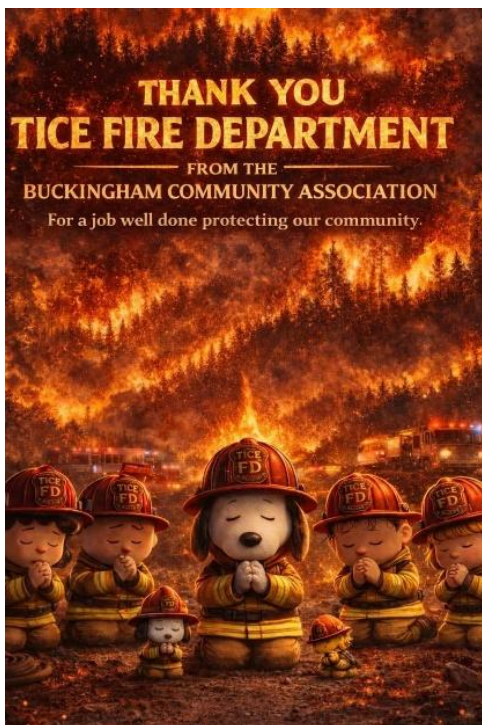
- Hear the candidates' plans for preserving our rural community lifestyle
- How can we manage growth in the Buckingham area?
- Learn about the single-member districts amendment
- Ask questions, get answers

 Trish Petresky

• Get your **PRESERVE BUCKINGHAM** tee shirt!



Follow us on Facebook!
Buckingham Community Association
Presented by the
Buckingham Community Association, Inc.
A Florida Not-For-Profit Corporation




Buckingham Community Association, Inc.
A Florida Not-For-Profit Corporation

**Celebrate
BUCKINGHAM!**

SATURDAY APRIL 11
11:00AM - 4:00PM FREE ENTRY

The *World Famous*
**Buckingham
Blues Bar**

BUCKINGHAMBAR.COM

**5641 BUCKINGHAM RD
FORT MYERS
LIVE MUSIC**
TOMMY LEE COOK
AND THE BUCKINGHAM BLUES BAND

**AUCTIONS
FOOD TRUCKS**


**VENDORS
RAFFLES
AND MORE!**

**HELP US RAISE FUNDS
TO PROVIDE SAFE &
FUNCTIONAL BUS
STOPS FOR THE
CHILDREN OF
BUCKINGHAM!**

THANK YOU TO OUR
CORPORATE SPONSORS!

 INTEGRITY BUILDERS
OF SWFL

 P&T

BUCKINGHAM PRESERVE COMMUNITY ASSOCIATION
100% OF THE PROCEEDS FROM THE AUCTION ITEMS AND RAFFLES GO DIRECTLY TO OUR COMMUNITY
TO UNITE THE RESIDENTS OF BUCKINGHAM COMMUNITY PRESERVE BY KEEPING THEM EDUCATED AND INFORMED SO WE
MAY ALL CONTINUE TO PROTECT AND DEFEND THE RURAL CHARACTER OF THIS SPECIAL COMMUNITY FOR GENERATIONS
TO COME.

LABELLE AREA EVENTS

And Services

Barron Library

Barron Library

461 N Main St, LaBelle, FL 33935



HERITAGE MUSEUM:
LaBelle's century-old
landmark

NOW Open Saturday's 10am to 2pm

<https://www.facebook.com/labelleheritagemuseum/>



BECOME A HEALTHIER You!

PHYSICAL HEALTH **MENTAL & EMOTIONAL HEALTH** **SPIRITUAL & SOCIAL HEALTH** **FINANCIAL HEALTH**

HEALTHIER HENDRY & GLADES
<https://healthierhendryglades.org/>

Humane Center 1200 Pratt Blvd, LaBelle

OUR MISSION

The Mission of Caloosa Humane Society is to serve, shelter, and protect the homeless pets in our care. We are dedicated to finding permanent and loving adoptive homes for our companion animals in need. Our no-kill facility provides low cost

Access link to our ARCHIVE of ALL OTR issues from day 1:

<https://www.ontheriver.org/archive>



LaBelle Downtown Revitalization Corporation

proudly announces the Downtown LaBelle Historic Walking Tour! Take a walk into Old Florida's past through our new self-guided tour, featuring audio clips of those that helped make LaBelle what it is today.

Visit Downtownlabelle.com/walking_tour.com to start your tour today, or download the app with your Apple or Android device by searching "Downtown LaBelle." Happy trails!

NOW HIRING
Full-time Firefighter/E.M.T.
LaBelle Fire application and job description available on website
www.citylabelle.com
Submit applications in person at 481 W. Hickpochee Ave, or email to lisawbrey@citylabelle.com by November 1, 2024

CITY OF LABELLE
Commission Meetings
SECOND THURSDAY OF EVERY MONTH @ 5:30 P.M.
City Hall
Commission Chambers
481 W. Hickpochee Ave.
Scan the QR Code
For full agenda packet
More information: 863-675-2872
www.citylabelle.com
Meeting are open to the public
IF YOU REQUIRE SPECIAL AID OR SERVICES AS ADDRESSED IN THE AMERICAN DISABILITIES ACT, PLEASE CONTACT THE CITY CLERK'S OFFICE AT 863-675-2872, NO LESS THAN FIVE (5) DAYS PRIOR TO THE ABOVE STATED HEARING DATE.





DOWNTOWN SUPPORTER MEMBERSHIP PROGRAM

Support the heart of LaBelle and grow with us!

The LaBelle Downtown Revitalization Corporation (LDRC) is powered by community memberships, fundraising efforts, and a strong public-private partnership. Our success comes from being a local initiative—driven by local people, funded by local support, and focused entirely on revitalizing and preserving the heart of LaBelle. By becoming a member, you're not just supporting a cause—you're investing in a vibrant, thriving downtown for generations to come.

INDIVIDUAL \$50.00

For residents and supporters who want to show love for downtown!

- Monthly e-newsletter
- Advance notice of LDRC events
- Be seen in our public supporter showcase online

NONPROFIT \$100.00

Exclusive rate for nonprofit organizations.

- Discounted participation at select LDRC events
- Listing in our online directory
- Featured in member promotions (newsletter & social media)
- Invitations to exclusive networking events and workshops

COMMUNITY PARTNER \$300.00

Perfect for small businesses and individuals wanting more visibility.

- Business listing in online directory
- Featured in our monthly e-newsletter with options for spotlights, ad placement, and special promotions
- Social media shares on LDRC channels
- Invitations to exclusive networking events and workshops
- Early access to event sign-up

BUSINESS \$500.00

For businesses who want visibility, impact, and a stronger downtown.

- Business listing in online directory
- Featured in our monthly e-newsletter with options for spotlights, ad placement, and special promotions
- Access to member-only referrals and features
- Social media shares on LDRC channels
- Invitations to exclusive networking events and workshops
- Early access to event sign-up
- 1 free booth at an LDRC Shop Downtown event.

READY TO JOIN?

Visit downtownlabelle.com

firehouse community theatre inc.

THE FIREHOUSE COMMUNITY THEATRE
PRESENTS



by Jones Hope Wooten

April 10, 11, 12 and 17, 18, 19

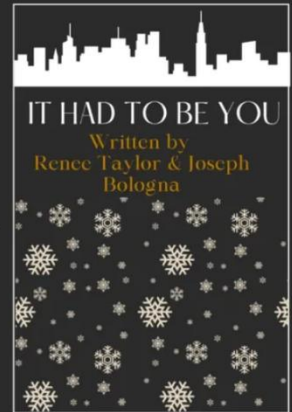
Five Southern women, whose friendships began many years ago on their college swim team, set aside a long weekend every August to recharge.

THE FIREHOUSE COMMUNITY THEATRE
PRESENTS

OUR 33RD SEASON

FEBRUARY 27, 28
MARCH 6, 7 AT 7PM
AND
MARCH 1, 8 AT 2PM

THEDA BLAU, A FAILED ACTRESS,
HEALTH FOOD NUT, AND
WOULD-BE PLAYWRIGHT
WANTS TO FIND
LOVE AND SUCCESS IN
NEW YORK.



IT HAD TO BE YOU

Written by
Renee Taylor & Joseph
Bologna



The NEWEST Theater in LaBelle!

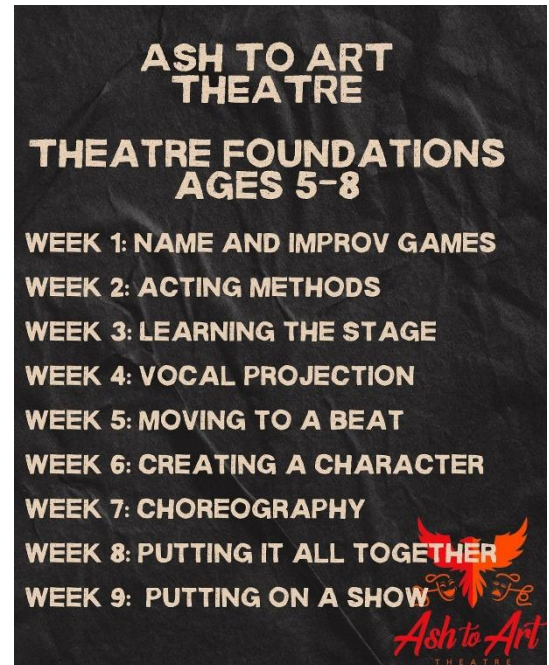
On Saturday evening, November 8th, the cast, crew, and directors of the YOUTH THEATER COMPANY performed a whimsical and fun stage play of ANNIE.

This was their FIRST public program, and it ran through two shows to large crowds. Of course, lots of family and friends of the kids. However, don't believe those youngsters and teens didn't give a heartwarming performance.

Watch for more programs in the future, and I'd advise you not miss a single one.

<https://www.ashtoarttheatre.com/>

atatheatreco@gmail.com



They are accepting donations to purchase new sound equipment for every performer.



<https://www.facebook.com/search/top?q=muse%20community%20association>

NORTH FORT MYERS & NORTH OLGA EVENTS

And Services



BIT BY BIT SADDLE CLUB, INC.

**"A Fun Show for Horse Lovers of
All Ages, Disciplines and Skill Levels"**

9:00 am Show Begins  Public Welcome!

2025 - 26 SHOW DATES: Oct 19; Nov 9; Dec 7; Jan 11; Feb 15; March 8; April 19

Classes

- 1 In-Hand Showmanship ←
- 2 Lead Line Class ← *IN Practice Arena!*
- 3 In-Hand Trail/Obstacle ←
- 4 Trail/Obstacle
- 5 Barrel Race *Can be lead line*
- 6 Gaited Pleasure ----W/T
- 7 Gaited Pleasure ----W/T/C
- 8 Slow Western Pleasure ---- W/T
- 9 Slow Western Pleasure ---- W/T/C
- 10 Ranch Rail Pleasure ---- W/T
- 11 Ranch Rail Pleasure ---- W/T/C
- 12 Pole Bending
- 13 Novice Box Reining/Boxing --- pattern -- W/T
- 14 Novice Box Reining/Boxing --- pattern -- W/T/C
- 15 W/E Ranch Riding class ---- pattern--W/T
- 16 W/E Ranch Riding class ----pattern--W/T/C
- 17 Basic Western Freestyle Dressage ----W/T
- 18 Fun Speed Class
- 19 English Rail Pleasure ----W/T
- 20 English Rail Pleasure ----W/T/C
- 21 English Equitation ----on the rail ----W/T
- 22 English Equitation ----on the rail ----W/T/C
- 23 Command Class ----W/T
- 24 Command Class ----W/T/C
- 25 Fun Class

TENTATIVE SHOW BILL

Year Membership (single) \$35.00
Year Membership (family) \$55.00
Show Cost for Unlimited # of Classes
Members \$50.00 Family \$70.00
Non-members \$70.00 per rider
Cost per class: \$15.00

★★ **Riders Must Choose W/T or W/T/C. Cannot do both.**

"Show Clinics" are offered on Saturday, a week before the show! *Members Only!*

★ **NEGATIVE COGGINS REQUIRED**
PLEASE, NO STALLIONS!

★★ **Riders Receive Placement Awards** ★★

Members also receive points from each show for year end prizes at the club party in late spring.

 **FACEBOOK PAGE**
Bit by Bit Saddle Club

Contact **Adele Smith** for more information
305-799-4651 or E-mail bitbybit338@gmail.com

FREESTYLE PERFORMANCES (In Hand & On Back) → These classes are non-judged & will run during lunch break

LOCATIONS: Oct 19; Nov 9; Dec 7; Lee Civic Center 11831 Bayshore Rd, North Fort Myers, FL
Jan 11; Feb 15; March 8; April 19 Lee County Posse Arena 17401 Palm Creek Dr N. Ft Myers, FL

★ **ABSOLUTELY NO HITTING/ ABUSING OF HORSE ANYWHERE, AT ANYTIME!**
★ **PROPER DISCIPLINE EQUIPMENT, HEELED BOOTS, SUGGESTED ATTIRE: SHORT OR LONG SLEEVE SHIRT OR 'CLUB' T-SHIRT, JEANS, BREECHES, LONG PANTS. 18 YEARS OLD and Under MUST WEAR a HELMET!**
★ **MULTIPLE ATTIRE AND TACK CHANGES IN BETWEEN CLASSES ARE NOT NECESSARY!**



OCTAGON WILDLIFE SANCTUARY



**41660 Horseshoe Road • Punta Gorda, FL
33982 • 239-543-1130**

Most mentioned offerings



Tiger Viewing



Lion Viewing



Guided Wildlife Tours



Bear Encounters

Ft Myers Blueberry Fest



Ft Myers Blueberry Fest – May 2 & 3, 2026 at the Mike Greenwell Regional Park (formerly called the Lee Civic Center) in Ft Myers. Saturday & Sunday 10am-5pm.

Family Fun & Festivities, Fresh Blueberries, Art & Crafts, Free Frisbee Dog Show, Delicious Food, Beer & Wine, Free Bounce Houses, Berry Shortcake, Live Entertainment, Axe Throwing, Free Rock Painting, Blueberry Fudge, Pony Rides, Free Blueberry Relay, Face Painting, Free Hula Hoop Contest, Pie Eating Contest, Free Petting Farm, Berry Cute Baby Contest, Free Sack Races, Free Corn Hole, Yummy Treats & Much More!

Admission \$7 (cash only admission), Kids 2 & Under Free. For \$1 off admission visit our website for coupon or bring a canned good for discount. Benefits the local food pantry.

Mike Greenwell Regional Park – 11831 Bayshore Rd, N Ft Myers, FL 33917.

www.FtMyersFest.com 386-860-0092

FOR ALL OF US



East Lee Wildlife Stewardship Group

Donate Today:



<https://www.paypal.com/US/fundraiser/charity/5100941>

Contact <https://www.facebook.com/james.kennedy.96155>



Big Brothers Big Sisters of the Sun Coast

Would your child benefit from having a mentor?
WE CAN HELP!

COMMUNITY-BASED PROGRAM
Community-based mentoring relationships involve one-on-one meetings and activities. Doing things like Big and Little enjoy together. Some Bigs meet their Littles on the weekends. Others get together with their Littles on weekday evenings. Each match is unique and develops a schedule that works for them.

SCHOOL-BASED PROGRAM
School-based mentoring takes place at school during one class period a week. Mentors inspire their students to reach their potential as they work on school assignments, promote self-confidence and develop a friendship.

INSPIRE POTENTIAL BECOME A "BIG" TODAY

Community-Based Program
Community-based mentoring relationships provide one-on-one support and activities. Bigs get together with their Littles on weekends. Some Bigs meet their Littles on weekdays. Others get together with their Littles on weekday evenings. Each match is unique and develops a schedule that works for them.

Site-Based Program
Site-based programs are implemented at schools and other educational sites. Bigs help Littles with homework, reading, and other school-related activities. Bigs and Littles meet at the site of the program, such as the school. It is a safe and structured environment for mentoring.

TOGETHER, WE ARE DEFENDERS OF POTENTIAL

Learn more about the organization and how your child can benefit from a mentor!
Contact Laurie Waininger at 863-343-0187 or lwaininger@bbsun.org

For the Sun Coast, please call us at 863-343-0187 or visit us at www.bbsun.org

[Big Brothers Big Sisters of the Sun Coast](http://www.bbsun.org) is here for you and your child.
Reach out to them today.
Or, are you interested in beginning a BIG? There are kids waiting for you!

South Florida Wildlands Association



a non-profit organization dedicated to the protection of wildlife and habitat in the Greater Everglades.

<https://www.southfloridawild.org/> <https://>

Lee County Florida 4-H

Are you a 4-H member ages 8-18 and showing a livestock animal? You will need to ensure that your ethics is up to date in order to show at our local livestock shows.

If you're in need of an ethics class, please visit Florida State Fair Agribusiness website at <https://floridastatefairag.com/ethics/>

- Please note classes fill up quickly, and you as the exhibitor/family are encouraged to stay on top of registration. For the full list of classes, please visit the Florida State Fair website (this is updated as classes are added).

2024/2025 Youth Livestock Show Ethics and Animal Care Workshop

For a list of available virtual and in person workshops, please visit the website. Note that new workshops are being added as needed.

WEBSITE:
<https://docs.google.com/document/d/1QcGj7R-BtCdNkjheHF3oG-mpo1qDIYE1aCct3IW-922o/edit>

Please note all youth must register to attend an ethics session. They are first come, first serve - don't wait to sign up! If these dates don't work in your families schedule, please see the master list for other dates available from other counties!

Can't remember if your Ethics Number is still valid? Or what it is? If you need your current number or have any questions, please email us at Emily.Smith@FloridaStateFair.com or call (813) 627-4229.



STATE OF OUR WATER
QUARTERLY SPEAKER SERIES



Algal Toxins & Alzheimer's Disease: A Brain Bank Prospective



KEYNOTE SPEAKER
Dr. David A. Davis

Research Associate Professor
University of Miami, Miller School
of Medicine Basik Endowment Bank

Gain insights from a leading expert on the relationship between environmental toxins and their potential role in causing neurodegenerative diseases.

Join us as we explore current research centered on how exposure to algal toxins can contribute to the onset of dementia and examine approaches to protect against exposure and neurotoxicity.



FREE RSVP

April 11, 2026 | 9:30 am - Noon
Room U-102
Florida SouthWestern State College
8099 College Pkwy, Fort Myers, FL 33919

Join us for the State of Our Water quarterly meeting

Learn more about our monitoring programs

Check out our ground-breaking aerosol detector for algae monitoring (ADAM) device!

Sign up to support our mission: become a member!

Network with other CWK members



CALUSAWATERKEEPER.ORG



BATTERY DISPOSAL SERVICES



HOUSEHOLD

Alkaline batteries such as:

- AA, AAA, C and D

Can be thrown in your curbside **garbage** bin.

- 9 Volt

Posts should be covered with tape then thrown in the **garbage**.



RECHARGEABLE

Rechargeable batteries cause fires and should be dropped off at a recycling facility. Solid Waste's centralized facility

Household Chemical Waste and Electronics Recycling Facility takes these items free of charge.



CAR

Car batteries are made of materials that are harmful to the environment. You can drop these batteries off for free to be recycled at the **Household Chemical Waste and Electronic Recycling Facility**.

Take Charge Lee County!

When certain batteries are improperly disposed of, they can become a fire hazard. This is why we are asking our residents and visitors to take charge and learn more about proper battery disposal.

Lithium-ion batteries continue to be a major fire hazard at our waste and recycling facilities. An increasing number of products contain lithium-ion batteries, which is why Lee County Solid Waste is encouraging residents to be aware of these products and to dispose of them properly. These batteries can be found in the following products:

Electronic devices, such as mobile phones, laptops, tablets, computer peripherals, Bluetooth devices and smart wearables

Power tools Remote car keys Vaping devices Game controllers Digital cameras Portable power packs Greeting cards Electric toothbrushes Toys Medical equipment Smoke/Fire/Carbon monoxide detectors E-bikes, e-scooters and hover boards

Rechargeable batteries, especially lithium-ion and nickel-cadmium batteries, can be recycled at the Household Chemical Waste and Electronics Recycling Facility for free.

Remember, no batteries should go in your recycling cart.



PROVIDING SUPPORT AND ASSISTANCE FOR CITIZENS AND INVESTIGATIVE JOURNALISTS WORKING FOR GOVERNMENT TRANSPARENCY AND ACCOUNTABILITY IN FLORIDA

The Florida Center for Government Accountability gives citizens the necessary tools and information to engage government officials more effectively by helping them better understand what is happening in their local communities and the effect big money has on local politics.

Traditional news outlets, particularly at the local level, face pressures never before seen and are increasingly unable to meet the informational needs of the public due to limited and dwindling resources.

Florida has the most progressive open government laws in the nation, yet citizen and media demands for public records too frequently result in questionable agency-imposed rules and restrictions and unlawful delays and denials. Also, the lack of accessibility of accurate reporting and over accessibility of inaccurate and biased information on or through the internet and social media more often results in misinformation, rather than accurate and well-researched facts. Citizens need access to reliable, fact-based, non-partisan information in order to hold government accountable.

NICK PENNIMAN, PRESIDENT, NAPLES, FL

**INTERACTIVE Crime Location Map for
Lee County**



<https://www.sheriflee.org/crime-map-2-0/>

Updated constantly



-----Fatherhood Mentors & Volunteers of Lee County, Florida

Sean Ryan, Fatherhood Mentors & Volunteers Administrator,
nearbyclinic@hotmail.com

Joshua Krakow, Active Dads Administrator

Single Dads Outreach has leadership opportunities on its Advisory Council for professions, retired or active, in the fields of social work, law enforcement, corrections and education. In addition, Single Dads Outreach services include mentoring from prior, seasoned fathers. Please contact www.SingleDadsOutReach.org or your local United Way in Lee County to learn about these volunteer opportunities.

Your Best Friend is Waiting

Lee County Domestic Animal Services (LCDAS) has lovable pets of all ages, sizes and breeds waiting to meet you. Every adoption includes spay or neuter surgery, age-appropriate vaccinations, a microchip and a county pet license, making adoption both simple and affordable. Whether you're searching for a playful puppy, a calm senior or something in between, your new best friend may be just a visit away.

Click here to learn more or visit leelostpets.com to browse adoptable animals today!



Calusa Humane Society and Veterinary Clinic

★ 🌟 Sponsorship Spotlight 🌟 ★

We are thrilled to announce that NASCAR's very own **Ross "Melon Man" Chastain** 🍉 has stepped up as a Tailwagger sponsor!

You might've just seen him at the Daytona 500!

His generous donation will make a huge difference in the lives of rescue animals, and we couldn't be more grateful. 🐾 🔄

Be sure to cheer him on this season—because he's not just winning on the track, he's winning for the paws! 🐾 🍉 🏠

SWAMP STOMP 5K
CALOOSA HUMANE SOCIETY

TAIL WAGGER SPONSOR

Melon Man

Ross CHASTAIN
MELONMANBRAND.COM

Watch Ross Chastain  NASCAR
www.melonmanbrand.com

protect and preserve the rights and liberties of all people in the United States



FOR



<https://www.aclufl.org/>

Did you know? Criminals can try to steal your home or property by illegally recording a fraudulent deed.



Sign up for free Property Fraud Alerts and get notified within 24 hours if someone tries to file a fraudulent deed or mortgage in your name.

<https://www.facebook.com/leclerkofcourt>



LWVLee Educational Events

March 7, 2026, 9-11am, Affordable Housing. --Part 3, Data, Barriers, Solutions, at the Collaboratory. <https://LWVLeeAffordableHousingUpdate.eventbrite.com>

April 4, 2026, 9-11am, Environment, at the Collaboratory. <https://LWVLeeEnvironmentUpdate.eventbrite.com>

May 2, 2026, 9-11am, Partnering and Networking for Voter Engagement at the Collaboratory. <https://LWVLeePreparingfor2026Election.eventbrite.com>

SCORE Florida

2201 Second
Fort Myers, FL

(239) 533-3102, ch.admin0219@scorevolunteer.org

[Grab your reader's attention with a great quote from the document or use this space to emphasize a key point. To place this text box anywhere on the page, just drag it.]

South West

Street, Suite 500,
33901

Serving Lee and Hendry Counties

We provide free and confidential one-on-one business counseling by phone, email, and in-person in Lee and Hendry counties We also conduct workshops for both start-up entrepreneurs and seasoned small business owners. SCORE is a fully independent private 501-3C non-profit with accountability to and some funding from the SB

SCORE Mentors...with experience in virtually every business category you can imagine help with:

- Business plan development, sales and marketing strategies
- Financing, taxes and E-commerce
- Management, administrative and operational procedures
- Ongoing advice to help your decision making

Life-Long Learning Made Easy

SCORE mentors, sponsors and local business owners with a specific areas of expertise conduct a variety of very popular, regularly scheduled, low-cost and free educational seminars and online workshops for establishing and managing a successful small business.

Free Resources

With access to a wide variety of documents, templates and tools to assist you in starting or growing your business, the information provided here covers a wide range of subjects including initial business planning, capital sources, government agencies, and much more.

BONSAI SOCIETY OF SWFL

THE Bonsai Society of SW Florida **2026 Annual Auction**
Saturday, April 18, 2026 9AM-2PM at the Berne Davis Gardens, 2166 Virginia Ave. Fort Myers, FL
Dave's "Grab 'n Go": 9AM to Noon: An assortment of items, \$10 or less.
Two Auctions: Silent and Live. You are welcome to participate in both.
The **Silent Auction**, from 9AM to 11:30 is a display of Trees and related items. You may also "Buy It Now" at the price on the tree.
The **Live Auction starts at 12PM to 1:00PM.** This is a chance to purchase some marvelous trees, often at a very low price.
These Auctions will give you the opportunity to acquire basic, as well as professionally developed trees, at the best prices in the area. Start your collection now.....
Free Parking.....Free Admission Visit us at www.bonsaiswfl.org





Major William M. Footman

Sons of Confederate Veterans

Camp 1950, Fort Myers, Florida



Consider joining us at our monthly meeting every 4th Saturday at

Smoke'n Pit Bar-B-Q, 1641 N. Tamiami Trail, North Ft. Myers, FL 33903

Lunch and fellowship - 11:00am, Meeting - 12:00pm

Brigade Commander: Sean McFall

Find out more about us at

Camp Adjutant: Gerald W. Shell, email: adjutant@camp1950.flscv.org

<https://www.camp1950.flscv.org/>



We care for local grave sites of Confederate Civil War and United States veterans of all wars

The Great Calusa Blueway Paddling Trail

A 190-mile marked canoe and kayak trail that meanders through the coastal waters and inland tributaries of Lee County, Florida. It attracts everyone from first-time kayakers to advanced paddlers and is home to abundant marine life, shore birds and crustaceans.



<https://www.fortmyers-sanibel.com/calusablueway>

www.RichAndLaurieInSouthFlorida.com



Listen to the Podcast and follow on Youtube, and more!

For information on where to go and what to do in SWFL!

<https://www.youtube.com/channel/UCvcRaJr9jghdQOgsnU2B6Pw>



The global farm is not only a hands-on training ground for those searching for help in tropical agriculture, but also an educational tool to make the public aware of hunger related issues and the answers there are to alleviate malnutrition and starvation.



17391 Durrance Road, North Fort Myers, FL 33917 | 239.543.3246 | info@echonet.org
<https://www.echonet.org>

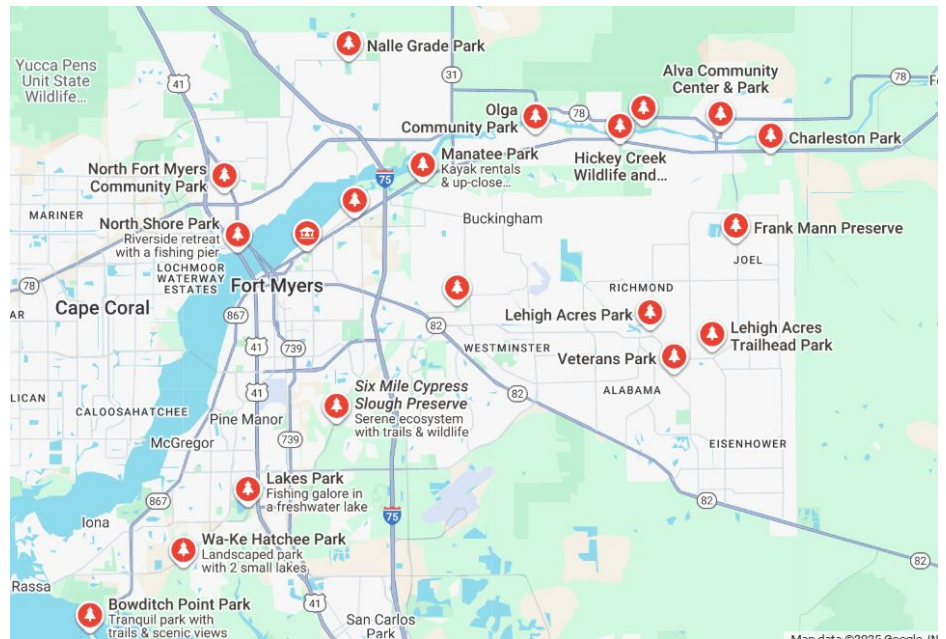


There are six fenced-in "Dog Parks" which allow for off-leash play. On-leash dog walking is allowed at many locations (listed below).

Dogs must be accompanied by an adult and must remain on-leash at all times while walking in the park. Find out more at: <https://www.leegov.com/parks/dog-parks>

Click to link below to all
**LEE COUNTY
PARKS**

Contact information and
interactive map



https://www.google.com/search?q=Lee+County+Parks&scasv=33d7c6e47e76292a&rlz=1C1CHBDen-GBUS1185US1185&sxsrf=AE3TifON_7qOfPqpR4DZQeqGWYYKd4mXTw:1764776637500&udm=1&lsack=vVowaciiHuWOwbkPj7DsiQ0&sa=X&ved=2ahUKewi9dek4aGRAxVIRzABHQ8YO9EQjGp6BAGlEAE&biw=1536&bih=695&dpr=1.25



Click the link below for contact, direction, and use information for

LEE COUNTY 20/20 PRESERVES



<https://www.leegov.com/parks/preserves>



April 2026 Mobile Medical Clinic Schedule

Florida residents without health insurance that can show proof of income below 200% of the Federal Poverty Guidelines pay nothing for care. Patients who do not meet income guidelines are provided care at significantly reduced rates.

<p>Tuesday, April 7th East Naples United Methodist Church 10:00 am to 2:00 pm 2701 Airport Road, Naples, FL 34112</p>	<p>Multiple Days a Month Mount Hermon Ministries Call 239-222-1829 to make an appointment 2856 Douglas Ave, Fort Myers, FL 33916</p>
<p>Thursday, April 9th Pine Manor Community Center 9:00 am to 1:00 pm 5547 Tenth Ave Fort Myers, FL 33907</p>	<p>Wednesday, April 15th Gladiolus Food Pantry 10:00 am to 2:00 pm 10511 Gladiolus Drive Ft. Myers, FL 33908</p>
<p>Saturday, April 11th Our Lady of Guadalupe Catholic Church 10:00 am to 2:00 pm 207 South 9th St, Immokalee, FL 34142</p>	<p>Tuesday, April 21st Community Cooperative 9:00 am to 1:00 pm 3429 Dr Martin Luther King Jr Blvd #4403 Fort Myers, FL 33916</p>
<p>Tuesday, April 14th & 28th Cafe of Life 9:00 am to 1:00 pm 26724 Nomad Dr Bonita Springs, FL 34135</p>	<p>New Location Coming Soon! Date to be announced Sunshine Health 4901 Palm Beach Boulevard #80 Fort Myers, FL 33905</p>
<p>April is Autism Acceptance Month If you have a family member in the IDD community and you are uninsured: Contact us for information about free medical screenings</p>	<p>Spring Wellness Fair Sat., April 11th 10 am to 2 pm The McGregor Clinic 2070 Carrell Road, Fort Myers, FL 33901</p>

Walk-in Clinic/Main Office
10676 Colonial Blvd, Suite 20, Fort Myers, FL 33913
Mon. to Fri. 8:30 am to 5 pm -- www.PremierMobileHealth.org
(239) 222-1829 or (239)-288-7949

**Premier Mobile Health Services screenings are supported by the Florida Department of Health through the C-Health Care Screening Grant Program and are provided at no cost to Florida residents who qualify under the 200% of the Poverty Guidelines.
*Through this program, we screen for cancer, diabetes, hypertension, heart disease. In addition, we screen for scoliosis in children ages 11-15.



www.lwvlee.org

Public Invited – Free

Overdevelopment in SWFL: Sacrificing Wildlife and Erasing Agriculture

Saturday April 4, 2026 9:00-11:00am

9:00 Registration & Networking, 9:30 Program Begins
At The Collaboratory, 2031 Jackson Street, Fort Myers & virtual, via Zoom



Information and Registration
<https://LWVLeeEnvironmentUpdate.eventbrite.com>
Email: lwvlee@lwvlee.org Call: 239-278-1032

How does fast-tracking overdevelopment of agricultural lands threaten food security and endanger Florida's farms?
How is destruction of habitat and depriving food jeopardizing species?

Amber Crooks specializes in wildlife and water policy as Senior Environmental Policy Advisor for the Conservancy of Southwest Florida. Amber represents the Conservancy on the U.S. Fish and Wildlife Service Panther Recovery task force to minimize wildlife being hit on the roadways and other committees focusing on the protection of black bears, burrowing owls, and manatees.



Expert Speaker
Amber Crooks
Conservancy of SWFL



Expert Speaker
Katrina Shadix
Bear Warriors United

Katrina Shadix is the Executive Director of Bear Warriors United, a nonprofit dedicated to defending Florida's wildlife and ensuring peaceful coexistence between humans and nature. In 2025, a federal judge ruled in favor of Bear Warriors United in a lawsuit against the FDEP finding that nutrient pollution violated the Endangered Species Act by destroying seagrass and causing mass manatee starvation. This ruling is considered a landmark victory for Florida's environmental protection efforts.



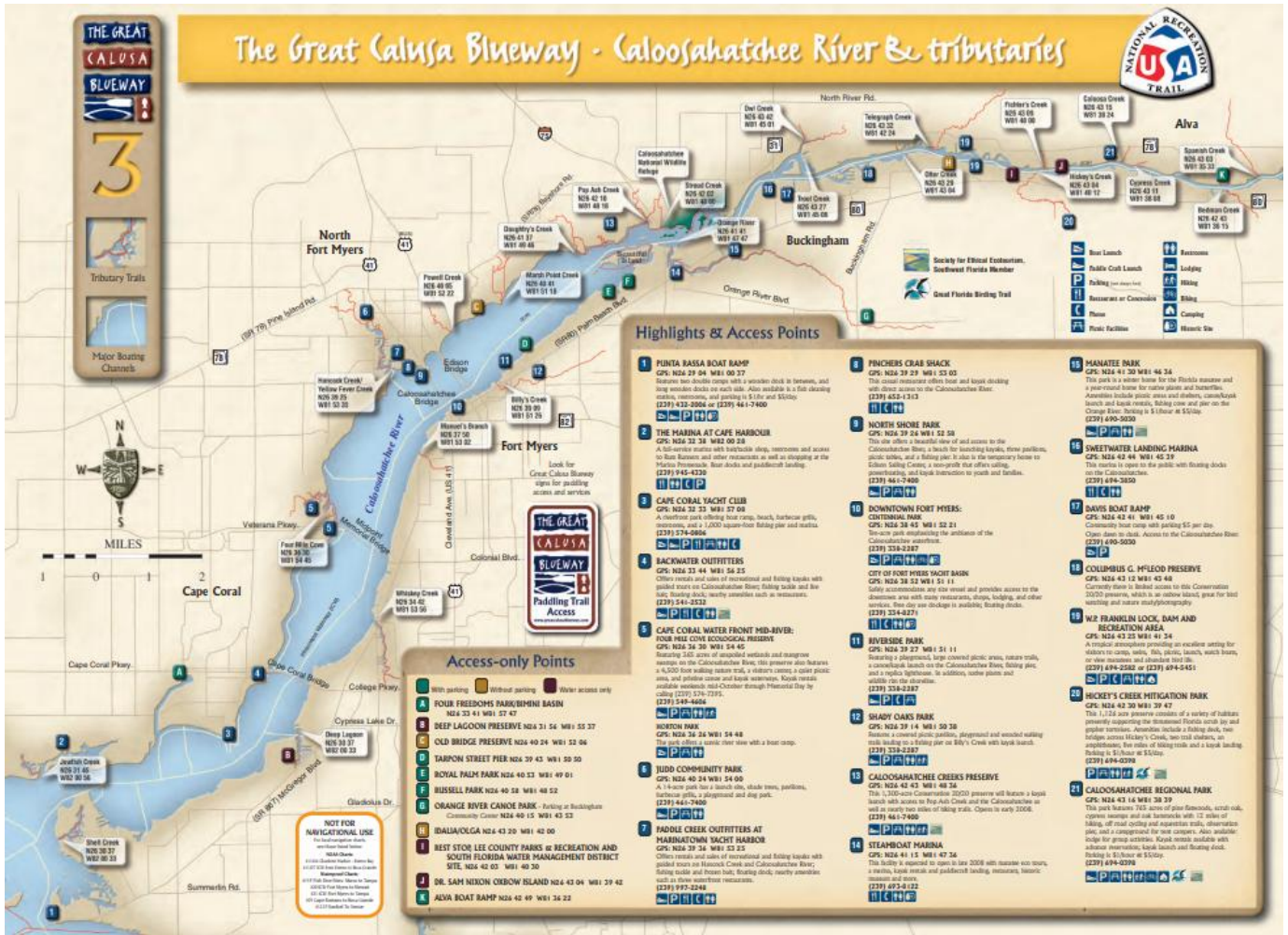
Expert Speaker
John Hallman
Defending Rural Florida

John Hallman hails from a long line of Florida cattle ranchers spanning seven generations. With a rich family heritage rooted in cattle ranching, John's passion for preserving Florida's working farms and ranches comes naturally. He has an extensive experience in legislative affairs in Tallahassee, navigating complexities of state government and public policy. John's strategic insights into the legislative process have been instrumental in shaping policies that address the needs of diverse communities. His ability to engage with both political and community leaders reflects his commitment to fostering collaboration and advancing initiatives.

The League of Women Voters of Lee County, Inc. is a nonpartisan organization that encourages informed and active participation in government, works to increase understanding of major public policy issues and influences public policy through education and advocacy.

The League of Women Voters does not support or oppose candidates and/or political parties.
The League of Women Voters is fully committed to diversity, equity, and inclusion in principle and in practice.

www.lwv.org, www.lwvfl.org, www.lwvlee.org Call 239-278-1032 or e-mail lwvlee@lwvlee.org
[Sign Up for LWVLee Email Notices](#) [Join LWV](#)





CIVIL AIR PATROL

U.S. AIR FORCE AUXILIARY

Whatever Your Skill or Interest,
There Is a Place for You in the
CIVIL AIR PATROL

JOIN US!

LEE COUNTY COMPOSITE SQUADRON
Adults Ages 19+ and Young Adults Ages 12-18
Non-Pilot, Drone, Communications and Many Others
All Training Provided and No Military Experience Required

FORMATION MEETING • DEC 7TH • 10AM-12PM
Base Operations, 5200 Captain Channing Page Drive, Fort Myers, FL
Contact Lt. Jesse Spencer at jesse.spencer@fiwgap.us or 239-788-7820



VOLUNTEERS SERVING AMERICA!

GoCivilAirPatrol.com



WHAT HAPPENS NEXT? COPING AFTER FINANCIAL FRAUD

According to [Fraud.org](#), reports indicate that consumers lost \$12.5 billion in 2024 to scams and fraud. However, the [Federal Trade Commission](#) (FTC) reports that number is closer to \$196 billion due to under reporting. Although there are millions of victims each year, many feel humiliated and alone as this type of crime happens silently and out of view of others. In addition to financial loss, fraud victims may suffer emotionally and physically as well. Feelings may range from lack of trust in oneself and others, embarrassment, shame, and betrayal. It is important to address these feelings and get the support needed to overcome them.

Help Yourself

The first step, according to [TD Bank](#), is by being kind – to yourself. You are not at fault and acknowledging that you have no control over a criminal's actions is crucial. The perpetrator took advantage of you by choosing to commit a crime, removing your culpability. Scams and fraud are an intentional exploitation of human nature. Knowing that you are not alone is also significant and can help with feelings of guilt. Remember there are estimated millions of people in the U.S. alone in your position.

To regain your financial confidence and peace of mind, add layers of protection. Monitor your accounts frequently so you can act quickly if you notice anything amiss. Implementing a credit freeze will bar anyone from opening any new accounts in your name, and adding two-factor authentication on online accounts will deter cyber fraud. Over time, the additional security should increase your self-assurance.

Get Support

While it may take some time to recover psychologically, it should not be prolonged and substantially affect your daily activities. If you find your day being drained by dwelling over your losses, or your quality of life is not what it was prior to the experience, it may be time to look for help and support elsewhere. Loss of sleep, feelings of hopelessness, or the desire to hurt yourself or someone else is not a normal reaction and needs to be addressed immediately. Look for local support groups or a financial therapist to provide some relief. Connecting with someone about your experience, particularly those who have faced similar situations may help with feelings of isolation and shame.

There are several nationwide resources available to those who have experienced financial loss due to fraud or scam. If you feel that you would benefit from talking to others about your experience, consider one of the following:

- If you feel you are in crisis and need immediate assistance, contact the [National Suicide & Crisis Lifeline](#) at 988 OR text SIGNS to 741741 for the Crisis Text Line. Both services are free and available 24/7.
- The [AARP Fraud Victim Support Group](#) provides individuals with an online forum to meet and interact with others who have experienced similar events. Sessions are a safe environment to give and receive valuable feedback and support from others who are on the road to emotional healing and recovery.
- [Give an Hour](#) is a national organization offering free mental health support by providing clinical counseling with licensed professionals or connecting you to a peer support group.
- [Cybercrime Support Network](#) (CSN) is a 501(c)(3) nonprofit organization on a mission to serve individuals and small businesses impacted by cybercrime, including peer support groups facilitated by CSN and a licensed counselor in a safe, virtual environment, and a military and veteran program.
- The Federal Bureau of Investigation (FBI) Victim Services Division informs, supports, and assists victims of crimes investigated by the FBI in navigating the aftermath of crime and the criminal justice process with dignity and resilience.

The first step in recovering is reporting the incident. If you suspect you have been a victim of fraud or scam, contact your local law enforcement agency immediately. The sooner it is reported, the more likely police will be able to catch the suspect. The more often this criminal activity is reported, the less it will happen to anyone in the future.





SWFL CRIME STOPPERS
SAY IT HERE!
WHY?
We guarantee anonymity!
We pay cash rewards.
HOTLINE: 1-800-780-TIPS
CLICK HERE TO SUBMIT A TIP
DOWNLOAD OUR PS TIPS MOBILE APP FOR FREE

SWFL Crime Stoppers is NOT a substitute for calling 9-1-1. In the event of an emergency, please call 9-1-1. Those who submit a tip are called "tipsters" and will remain 100% anonymous. No caller ID. No recorded lines. No tracking of phone calls. We want your information, not your name!

Put simply it is a three-part approach to solving the crime problem. SWFL Crime Stoppers relies on cooperation between our community, the media, and law enforcement to provide a flow of information about crime, wanted fugitives and suspicious activities.



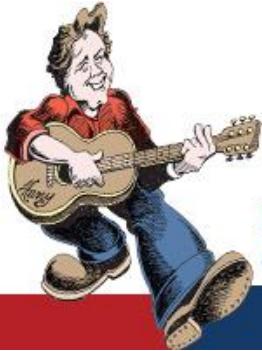
Mission

Volunteer Florida strengthens Florida's communities through national service, fostering volunteerism and leveraging resources.

<https://volunteer.volunteerflorida.org/>



Effective immediately, persons who are experiencing homelessness (living outside, in a car, or other place not meant for human habitation) and seeking permanent housing resources in the Lee County CoC should contact 239-533-7900, and select options 1, 5, then 3, to complete a Coordinated Assessment.



Harry Chapin Food Bank
OF SOUTHWEST FLORIDA

Fighting Hunger, Feeding Hope

Give TIME. Give MONEY. Give FOOD.

To make a donation, **call (239) 334-7007** or visit

www.harrychapinfoodbank.org

We do our best to keep you all informed on where you can get food and how you can help.

For Food pickup locations:

<https://harrychapinfoodbank.org/?s=Food+locations>

A promotional flyer for Big Brothers Big Sisters of the Sun Coast. It features a photo of a man and a boy sitting on a bench, and a smaller circular photo of a boy. The text promotes a virtual open house for becoming a mentor (BIG).

Big Brothers Big Sisters
OF THE SUN COAST

All young people **DREAM** of a bright future—one that's full of **OPPORTUNITIES. POSSIBILITIES.**

MENTORSHIP MATTERS!

Today's mentee is tomorrow's leader, so let's help them shape a **strong future.**

Join us for a **virtual open house** to learn more about becoming a **MENTOR (BIG)**

EVERY WEDNESDAY FROM 4 PM - 4:30 PM

Contact **Teresa Taft** at **941-586-0707** | ttaft@bbbssun.org

JOIN US ON ZOOM AT:
<https://us02web.zoom.us/j/81091089176>
Meeting ID: 810 9108 9176

The **Florida IMMIGRANT Coalition** asks that you copy and print these information cards to share with any person, documented or not, you may know who may be in danger.

ICE and local enforcement of immigration policies have escalated in Southwest Florida. Be aware of your rights.

WHAT TO DO WHEN YOUR LOVED ONE WAS PICKED UP BY ICE



First, report the raid!

Contact your local community organization if you have one and share the raid information. If you do not know of any organizations, you can report the raid to the Immigrant Defense Project (IDP) at 212-725-6422. Be ready to provide details about the raid.

Second, retrieve your loved one's information. It is important to have your loved one's complete name, date of birth, country of origin, and their A-Number if possible. An A-Number begins with an "A" and is followed by eight or nine digits. This is an identifying number issued by the Department of Homeland Security for anyone who has had contact with any immigration agency.

Q: WHAT HAPPENS IMMEDIATELY AFTER ICE DETAINS MY LOVED ONE?

A: If ICE arrests your loved one, they will first be taken to an ICE office for processing and then to a jail where they will be detained. Families will often get a call from their loved one a few hours after the arrest.

Q: HOW DO WE KNOW WHEN THE FIRST COURT DATE WILL BE?

A: If your loved one does NOT have an order of removal, in most cases they will be placed in removal proceedings, which means they can fight their case in front of an immigration judge while detained. You can find out when and where the court date will be by calling the Executive Office for Immigration Review (EOIR) Automated System at 1-800-898-7180 or by visiting EOIR's automated website: <https://acis.eoir.justice.gov/en/>.

Q: HOW WILL THEY GET A LAWYER?

A: Most detained people are unrepresented, because the U.S. government does not provide an immigration lawyer, even if the person cannot afford one. In New York, some detained non-citizens will be appointed an immigration attorney through the New York Immigrant Family Unity Project (NYIFUP) after their first court date but before their second court date. This program provides a free attorney to individuals who are detained and do NOT have a prior order of removal (see the information sheet on NYIFUP included on page 27). *Important: if you hire a private attorney before the first court date, you will be disqualified from NYIFUP, even if you cannot afford to pay that attorney in the future.*

Q: SHOULD WE TALK TO AN IMMIGRATION ATTORNEY NOW?

A: If a loved one has an order of removal you should consult with an immigration attorney right away. It is important to determine whether the loved one already has a prior order of deportation because they will be at imminent risk of deportation and might need immediate attorney intervention.

Q: HOW LONG WILL THEY BE DETAINED?

A: If a loved one qualifies for a way to legally stop the deportation in court, they may be detained for many months and sometimes years, all while fighting their case. Under immigration law, some people qualify for a "bond hearing" within the first few months to try and fight their case from the outside while other people are not eligible. Even with a "bond hearing" many people will not be released or they may not be able to afford the bond amount set. Families should make financial plans in order to have money ready for bond and support themselves, for a potentially long period of time, without their loved one's income.

Q: HOW CAN I VISIT THEM AND SEND THEM MONEY?

A: Each jail has different rules. Specific updated information can be found here: <https://www.ice.gov/detention-facilities>. In the following page you can find information for the most common detention centers.

Q: CAN WE PREPARE NOW WHILE WAITING FOR COURT?

A: Yes. There are documents that the family can start to collect that may help. In addition, if the loved one had an ongoing obligation to report (maybe to criminal court to pay a fee, probation, a rehabilitative program, etc.), it is important to let the point of contact for that reporting know that your loved one is detained. This can be a long to do list - and a great way for organizers or community members to support the family through this process.

Community of Care How Heart Wounds Heal

A group experience to bring healing to wounds of the heart—emotions, spirit, soul—from the unique hurt, trauma or loss experienced by many in their lives. People experiencing deep hurt of all kinds may find relief, reassurance and healing in this offering of care.

Often, those with heart wounds experience exhaustion, increased irritability or, feeling overwhelmed, isolated, or weighed down by grief or seemingly unending need.

These reactions require the security of a safe fellowship space to facilitate healing. The group will be led by compassionate, faith filled facilitators who are trained in Bible based trauma healing.

Together, we will make a safe space for group members to:

- Discover what the Bible says about those who hurt
- Learn about heart or soul hurt and its effects
- Experience being heard and valued
- Release some emotional pain
- Build resilience for the future



12 Tuesdays
3/4 - 5/20

Time: EST
6:30 - 8:00

Email for Registration
HurtMending@gmail.com
or
Follow us on
Eventbrite

HurtMending Facilitators:
Tee Ormiston, Adult and Generational Trauma Facilitator/Trainer
George Ormiston, Adult and Generational Trauma Facilitator/Traine
Register at: Eventbrite
Contact: HurtMending@gmail.com
 Grace for Registration fee waived by emailed request



HurtMending Ministry Offering,
in collaboration with





NOW HIRING

EARLY LEARNING TEACHERS & ADMINISTRATORS



Child Care of Southwest Florida is now hiring full and part-time positions at our locations across Lee County and our centers within Lee County schools.



COME GROW WITH US! APPLY NOW

Current Locations

- Children's Garden of LaBelle, *LaBelle*
- Joseph H. Messina Children's Center, *Fort Myers*
- P.A. Geraci Development Center, *Fort Myers*
- The Children's Learning Center, *Fort Myers*
- The Community Children's Center, *Lehigh Acres*
- G. Weaver Hipps Early Learning Center, *Lehigh Acres*

Opening Soon
In-School Early Learning Centers

- Harns Marsh Middle, *Buchingham*
- Bonita Springs Middle, *Bonita Springs*
- San Carlos Park Elementary, *Fort Myers*
- Ray V. Pottorf Elementary, *Fort Myers*
- Pelican Elementary, *Cape Coral*

SCAN THE QR CODE
to explore career opportunities and apply for open positions online or call (239) 320-7799



The school district is neither endorsing nor sponsoring this event, product or service, nor endorsing the views of the sponsoring organization.





**Big Brothers
Big Sisters.**
OF THE SUN COAST



BECOME A MENTOR MANAGER- MAKE A DIFFERENCE TODAY!

- Big Brothers Big Sisters of the Sun Coast is seeking an outgoing, experienced Human Services professional with a passion for working with youth in the role of Mentor Manager.
- BBBS Sun Coast is an Agency that promotes the mentoring relationships between Bigs and Littles for the purpose of igniting the potential in each child served.

JOIN OUR MISSION APPLY AT

- bbbsun.org



Please Help Us To Help Them



Abuse Counseling & Treatment, Inc.
Domestic Abuse Shelter

We are looking for donations of *New*
OR
Gently Used Outdoor Toys
for the Children.
Cash Donations also Accepted.







They need our help.



Questions: Please call 239-693-0351
 If you can help, please bring items by March 10, 2026 to:
 American Legion Auxiliary Unit 351
 4800 Palm Beach Blvd., Fort Myers, FL 33905



Alva Area FOOD PANTRIES

Grace Church, Fort Myers Shores

2nd Saturday every month

Food pick-up is by appointment.
Call the church office at 239-694-2797 for information.

Charleston Park Community Center

239-728-8895

FOOD PANTRY

Every week, Friday, 10am-2pm

ALVA Methodist Church

Food Pantry @ Bethany House

Food Pantry: 9am-12pm 2nd & 4th Wednesdays

239-728-2277

CALVARY NATIONS Church

19850 Palm Beach Boulevard, Alva

Every Saturday, 3pm until supplies run out.

239-7285566

St. Vincent DePaul RC

Our Lady's Cupboard Food Pantry

Call (239) 694-3985 for hours open.

Some LaBelle

Area Churches:

Issue 87, April 2026, Circulation: Over 1,500 subscribers, 12,000 social media readers

Assemblies of God

915 Lake Manor Dr Labelle, FL 33935

(863) 675-0900

Carlson Memorial Church

310 Campbell St Labelle FL, 33935

(863) 675-0656

The Channel UMC Ft Myers/LaBelle

Fully ONLINE LIVE, Mondays, 7pm, EST

<https://www.facebook.com/TheChannelUMC/>

ZOOM LINK:

<https://us02web.zoom.us/j/89527254110?pwd=bWEyL283YW9sck52R2V5UDVqTEJiQT09>

Church of Christ Central

60 Hendry St, Labelle, FL 33935

(863) 675-4796

Eastside Baptist Church

1110 S Carlyle St, Labelle, FL 33935

(863) 675-3595

El Faro Assemblies of God of LaBelle

431 Bryan Ave, Labelle, FL 33935

(863) 675-5947

Grace Baptist

4200 Ne Eucalyptus Blvd, Labelle, FL 33935

(863) 675-3349

International Christian Fellowship

233 Clark St, Labelle, FL 33935

(863) 675-4227

Pentecostal Church of God

55 Orange Ave, Labelle, FL 33935

(863) 675-0938

LaBelle Assembly of God

915 Lake Manor Dr Labelle FL

(863) 675-0900

LaBelle First Baptist

330 N Main St, Labelle, FL 33935

(863) 675-2171

Our Lady Queen of Heaven Parish

355 S Bridge St, Labelle, FL 33935

(863) 675-0030

Christ Central LaBelle, Reformed

540 1st Ave LaBelle FL

(863) 675-2100

Good Shepherd Episcopal

1098 Collingswood Pkwy, LaBelle FL

(863) 675-0385

<https://goodshepherd.dioswfl.org>

Christ The King Lutheran

1362 Thigpen Rd, Labelle, FL 33935

(941) 675-2733

New Testament Assembly

60 Calhoun St, Labelle, FL 33935

(863) 674-0444

Paynes Creek Primitive Baptist

83 Campbell St, Labelle, FL 33935

(863) 675-1435

Saint Matthews Missionary Baptist

929 Caloosahatchee Ave, Labelle, FL 33935

(863) 675-4451

Bethel Holiness

1153 Cornelia Dr SW, Labelle, FL 33935

Some Alva & Fort Myers Shores Churches:

Church of Peace

814 Fordson Ave, Labelle, FL 33935 (863) 674-0074

New Bethel Baptist

874 Suwanee Ave, Labelle, FL 33935

(863) 675-3205

Upper Room Church of God

345 S Bridge St, Labelle, FL 33935

(863) 675-7001

St. Vincent DePaul's RC Church

13031 Palm Beach Boulevard, Fort Myers, FL 33905

www.stvincentftmyers.org 239-693-0818

Alva Methodist Church

21440 Pearl St. P.O Box 96

Alva, FL 33920

Alvamc@embarqmail.com

www.alvamethodist.org 239-728-2277

Alva Church of God

21520 Park St, Alva, Florida 33920

239-728-2644

Liberation International Church

Avenue D, Charleston Park

Alva, FL 33920,

239-601-4870

New Hope Faith Temple of Jesus Christ

23210 Avenue D, Charleston Park

Alva, FL, 33920 239-770-4974

Buckingham Presbyterian Church

4241 Buckingham Road

Fort Myers, FL 33905

www.buckinghampc.org

Light of the Nations Filipino Congregation

19850 Palm Beach Blvd (at Calvary Church)

Alva, FL, 33920

239-728-5566

First Spanish Assembly of God Church

2219 Joel Blvd

Alva, FL

Countryside Wesleyan Church

17750 Palm Beach Blvd, Alva, FL 33920

239-368-3270

Calvary Nations Church

19850 Palm Beach Blvd

Alva, FL 33920

CalvaryChurchSwfl@yahoo.com

www.calvarynations.org 239-728-5566

First Baptist Church of Alva

2790 Joel Blvd, Alva, FL, 33920

www.alvabaptist.com 239-728-2034

Grace Church, Ft Myers Shores
14036 Matanzas Drive, Ft Myers, Florida 33905
www.egracechurch.com 239-694-2797

Bethlehem Lutheran Church
14531 Old Olga Road,
Fort Myers, FL 33905
www.blcefm.org 239-694-3878

Olga Baptist Church
2364 South Olga Drive
Fort Myers, FL 33905
www.olgabaptist.org 239-694-2012
olgabapch1@embarqmail.com

Crossroads Baptist
10721 Palm Beach Blvd, Fort Myers, FL 33905
(239) 693-2777

Fort Myers Shores Seventh Day Adventist
14830 Palm Beach Blvd, Fort Myers FL
(239) 693-0341

Olga-Fort Myers Shores Methodist
14036 Matanzas Dr, Fort Myers, FL 33905
(239) 694-2797

Olga Baptist
2364 S Olga Dr, Fort Myers, FL 33905
(239) 694-2012
olgabaptistchurch@gmail.com

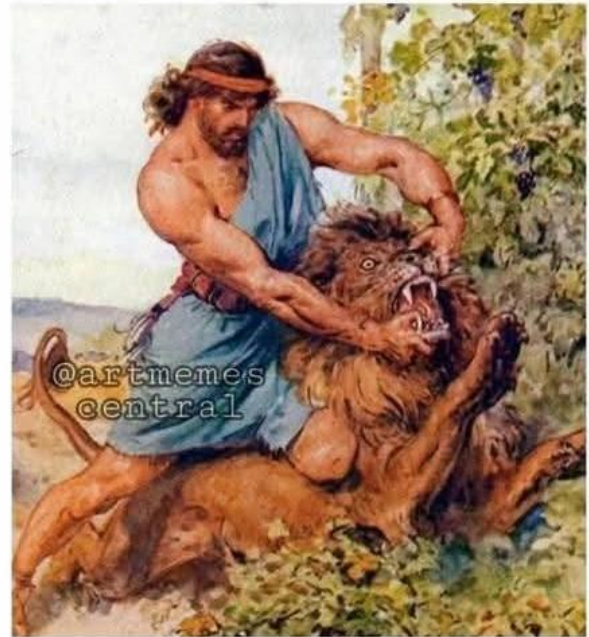
Rosa De Saron Assemblies of God
13235 Palm Beach Blvd, Fort Myers FL

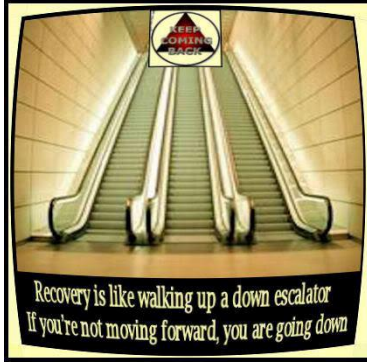
(239) 694-8777

Victory Christian Center Assemblies of God
11431 Palm Beach Blvd, Fort Myers, FL 33905
(239) 694-5131

Cielo's Abierto's Ministries
10721 Palm Beach Blvd, Fort Myers, FL 33905
(239) 297-6472

People in the Bible struggled with
the same challenges we face today.
Here we see Samson trying to give
his cat a pill...





12 Step Programs along the Caloosahatchee

Because Alcoholics Anonymous was exclusive to people who struggled with alcohol addiction, a vast array of other programs were formed to aid and support those in recovery from other addictive disorders. These include the following groups:

Any type of group you do not find listed below may be sought at this website:
<https://www.addicted.org/directory/category/lee-county-3.html>

Before going to the meeting, confirm time and place by phone

ALVA:

Alva Community Center, 21471 N River Rd, Alva, FL 33920

-AA Way, 8pm Wednesdays, Big Book, OPEN

St. Matthews House, Cypress Creek & North River (rte 78) Roads, Alva

Jill's Place (for women) AND Justin's Place (for men), 239-687-7633 or intake@stmatthewshouse.org.

<https://stmatthewshouse.org/whatwedo/justinsplace/jills-place-retreat-center>

FORT MYERS SHORES:

St. Vincent De Paul RC, 13031 Palm Beach Blvd, Fort Myers: Fort Myers Shores Group OStAH – Tuesday, 8:00 pm

Calvary Assembly of God, 11431 Palm Beach Blvd, Fort Myers:

-Night Owls OD – Saturday, 10:05 pm

LEHIGH ACRES:

-AA SUNRISE GROUP - MONDAYS, WEDNESDAYS, FRIDAYS & SATURDAYS 7AM

705 Leeland Heights Blvd E, Lehigh Acres

(239) 275-5111

-AA MONDAY AT A TIME - MONDAY 6:30PM

5513 8th St W, Lehigh Acres

(239) 275-5111

-AA CHAIR'S CHOICE - TUESDAY 6:30PM

5513 8th St W, Lehigh Acres

(239) 275-5111

-AA SPIRITUAL SEARCH GROUP - TUESDAY 8PM

705 Leeland Heights Blvd E, Lehigh Acres

(239) 275-5111

-AA THIRSTY THURSDAYS - THURSDAY 6:30PM

5513 8th St W, Lehigh Acres

(239) 275-5111

-AA HERE AND NOW- SUNDAY 6:30PM

5513 8th St W, Lehigh Acres, 33971,

(239) 275-5111

-NA HOPE WITHOUT DOPE - THURSDAY & SATURDAY 6:30PM

705 Leland Heights Blvd. E., Lehigh Acres,

(866) 819-5346

-AA LEHIGH SUNDAY NIGHT - SUNDAY 8PM

705 Leeland Heights Blvd E, Lehigh Acres

(239) 275-5111

-AA HEARD IT THROUGH THE GRAPEVINE - FRIDAY 6:30PM

5513 8th St W, Lehigh Acres

(239) 275-5111

-AL ANON MOVING FORWARD AFG - MONDAY 10AM

705 Leeland Heights Blvd E, Lehigh Acres

(888) 425-2666

-AA FIRST THINGS FIRST - MON-SUN 7AM

5513 8th St W, Lehigh Acres

(239) 275-5111

-AA NOONERS - MON-SUN 12PM

705 Leeland Heights Blvd E, Lehigh Acres

(239) 275-5111

LABELLE:

Good Shepherd Church, (239) 275-5111, 1098 Collingswood Pkwy, Labelle

-AA-PORT LABELLE GROUP – ODH- SUNDAY 7PM

-MAKING THE EFFORT -OLbHD- MONDAY 7:00 PM

-AS BILL SEES IT- OD- SATURDAY 9:00AM

-WED BIG BOOK GROUP- OBBH- WEDNESDAY NOON

-OPEN DISCUSSION -ODH- FRIDAY 7:00PM

First Christian Church, Rte 29 & Ford Ave, LaBelle

-LABELLE GROUP-ODAH- THURSDAY 7:00PM

-STEP GROUP-Cst- TUESDAY 7:00PM

-Al Anon- AFG - THURSDAY 7PM

138 Ford Ave, Labelle

(888) 425-2666

-AA-THURSDAY 7PM

138 Ford Ave, Labelle

(239) 275-5111

-AA-MEETING AT THE INN - WEDNESDAY 7:15PM

Port LaBelle Inn, 1568 Oxbow Dr, Labelle

(239) 275-5111

NOT TODAY - MONDAY 6:00PM

133 N Bridge St, Labelle

(866) 819-5346

Other 12 step or non-12 step recovery group

**in the Alva area
(From Hendry
County Line to
Fort Myers
Shores, north
and south of our
river) please let
me know its
name, location
and the phone
number for
information to
list here.**

TY

Kendewalt1@gmail.com

Recovery Meetings at Grace Shores		
Meeting Time	Meeting Type	Location
Monday 12 Noon	AA Open	The Lighthouse
Monday 7 PM	Al-Anon	Room 1
Monday 7 PM	Men's AA	The Lighthouse
Monday 7PM	CA	The Cafe!
Tuesday 12 Noon	AA Open	The Lighthouse
Tuesday 7 PM	Men's SAA	Room 2
Tuesday 7 PM	Women's AA	The Community Center
Wednesday 12 Noon	AA Open	The Lighthouse
Thursday 12 Noon	AA Open	The Lighthouse
Thursday 7 PM	AA Open	The Community Center
Thursday 8PM	AA Open	Room 1
Friday 12:00 Noon	Co-ed	The Lighthouse
Friday 12:00 Noon	Al-Anon	Room 1
Friday 7PM	AA Big Book	The Lighthouse
Saturday 7PM	AA Speaker	The Community Center
Sunday 7PM	AA Big Book	The Lighthouse

Celebrate Recovery @ all 3 campuses

Dinner at 6:00, followed by large group then small group meetings.		
Monday 6:45-9pm	Central Campus 2415 Grand Ave., Fort Myers, FL 33901	
Wednesday 6:30-8:30	Ft. Myers Shores Campus 14036 Matanzas Dr, Ft. Myers, FL 33905	
Friday 6:45-9PM	Cape Coral Campus 13 SE 21st PL., Cape Coral, FL 33990	

The Lighthouse is located at 14006 Matanzas Dr. on the west end of campus. All other meeting spaces are on the main campus at 14036 Matanzas Dr. If you have questions or would like someone from our Recovery Team to call you, please call 239-694-2797




14036 Matanzas Dr.

Caregiver Respite and Support 12:15-2pm every 4th Friday

The challenges of being a caregiver of a loved one can be demanding. We invite you to an afternoon of support and care for you. We will serve you and your loved one (if they are able to attend) a delicious, free lunch. We have activities to engage your loved one while you restore with some relaxation and fun. This is monthly gathering is free and open to any caregiver.

You can register by emailing Paula pwinters@egracechurch.com or by calling the church at 239-694-2797 and leave a message. We will return your call.

I have sponsored and recommended these well led and overseen groups for over 30 years in ministry -Ken DeWalt

<https://www.griefshare.org/>

<https://www.divorcecare.org/>

HOPE & Healing
divorce recovery support groups

Find a DivorceCare support group

“It was the best thing I did for my kids and myself.”
Melissa



Important Phone Numbers & Websites

Font Size: [Share & Bookmark](#) [\[+\] Feedback](#) [Print](#)

AGENCY	NORMAL BUSINESS	EMERGENCY
American Red Cross (Local Chapter)	239-278-3401	239-278-3401
Arson Alert HotLine	800-342-5869	800-342-5869
Blood Donor Centers	888-9-DONATE	
- Lee Memorial Blood Center	239-343-2333	
- Florida's Blood Centers	239-574-3170	
Cape Coral Emergency Management	239-573-3022	911
Cape Coral Police Department (non-emergency)	239-574-3223	911
Dept. of Financial Services (Insurance)	239-461-4001	800-22-STORM
Federal Emergency Management Agency	800-621-3362	800-462-7585
Florida Division of Emergency Management	850-413-9969	
Fort Myers Police Department	239-321-7700	911
Lee County Animal Services	239-533-7387	239-533-7387
Lee County Emergency Information Hotline / United Way 211	239-433-2000	211
Lee County Emergency Management	239-533-0622	239-533-0622
Lee County Government	239-533-2111	
Lee County Health Department	239-332-9501	239-332-9501
Lee County Public Safety & EMS	239-533-3911	911
Lee County Sheriff's Office	239-477-1000	911
Mobile or Manufactured Home Residents	850-617-3004	
National Weather Service/Tampa Bay	813-645-2323	
Poison Information	800-222-1222	800-222-1222
Salvation Army, The	239-278-1551	239-278-1551
Sanibel Police Department	239-472-3111	911
Traffic Conditions in Florida (Current)	511	511
United Way of Lee, Hendry, Glades & Okeechobee Counties	239-433-2000	211

AGENCY	WEB ADDRESS
Community Emergency Response Teams (CERT)	www.ready.gov/cert
Department of Financial Services (Insurance)	www.myfloridacfo.com
Department of Homeland Security	www.dhs.gov/
Florida Lightning Safety	www.weather.gov/safety/lightning
Mobile or Manufactured Home Residents	www.flhsmv.gov/mobilehome
American Sign Language Preparedness Videos	www.lee.gov/publicsafety/emergencymanagement/plan
StormReady	www.weather.gov/stormready/



You can donate to a number of charities that help Ukraine, including these reported by Google as reputable charities

Ukrainian Red Cross Society, A long-standing and trusted charity that provides humanitarian aid and emergency response

Come Back Alive Foundation, Provides technology, training, and accouterments to the Armed Forces of Ukraine

Razom for Ukraine, Provides humanitarian relief and recovery, evacuates vulnerable populations, and advocates for Ukraine

United Help Ukraine, A charity that has been awarded 4 stars on Charity Navigator and Gold Transparency on Candid

Hope for Ukraine, A 501(c)3 tax-exempt organization

Other organizations that help Ukraine

World Central Kitchen

Sunflowers for Peace

Caritas Ukraine

Voices of Children

Vostok SOS

Before you donate funds to ANY relief organization, Protect Yourself

Give to established charities or groups whose work you know and trust.

Be aware of organizations with copycat names or names similar to reputable organizations.

Be wary of new organizations that claim to aid victims of recent high-profile disasters.

Do your research. Use the Federal Trade Commission's resources to examine the track record of a charity.

Give using a check or credit card. If a charity or organization asks you to donate through cash, gift card, virtual currency, or wire transfer, it's probably a scam. Learn more about this trick from the FTC.

Practice good cyber hygiene:

Don't click links or open email attachments from someone you don't know.

Manually type out links instead of clicking on them.

Don't provide any personal information in response to an email, robocall, or robotext.

Check the website's address—most legitimate charity organization websites use .org, not .com.

After a natural disaster or other emergency, carefully vet any contractors before hiring them to work on your home or business.

ON THE RIVER Alva Community Newsletter – Advertising Rates as of March 21, 2025

The FREE monthly online OTR E-Newsletter is circulated to 12,000+ readers including 1,500 individual subscribers. We encourage all to share it as well.

Ads run full across the 9x11" OTR page, then down the fraction of the page you choose.

Advertising rates per each month :

¼ Page... one issue: \$40.00, six issues: \$30.00each, twelve issues: \$25.00each

½ Page... one issue: \$60.00, six issues: \$50.00each, twelve issues: \$40.00each

Full Page... one issue: \$100.00, six issues: \$90.00each, twelve issues: \$70.00each

Upon request we can format ads for you with WORD.doc copy and j.peg photos or logos. We can also scan any copy and/or photos you provide to create a single j.peg of your ad.

You will receive a screenshot proof of the ad for your approval as soon as we have it formatted before its issue is published. Lack of response to the proof will be considered acceptance.

Full payment for all issues contracted for is to be made by the 15th of the month preceding the first month in which the ad is to appear, which is also the date the ad copy is to be received. Payments are to be by check made out to Ramona DeWalt, noted: OTR.

Special thanks to all whose advertising and donations support the mission of ON THE RIVER.

FGCU Community and Public Health Nursing Students



Breast Cancer Awareness

Who?

- Breast cancer is the most common cancer in American women
- Breast cancer can also affect men

When should I screen?

- Ages 40–44: Option to begin annual mammograms
- Ages 45–54: Mammogram every year
- Ages 55+: Every 1–2 years (or as advised by a doctor)

Risk factors

You Can't Control

- Family history/genetic mutations
- Advanced age
- Dense breast tissue

You Can Control

- Physical inactivity
- Alcohol consumption
- Smoking
- Maintaining a healthy weight

Warning signs

- Lump or thickening in breast or underarm
- Change in breast size or shape
- Dimpling or puckering of skin
- Nipple discharge
- Redness, scaliness, or swelling

Prevention


- Exercise 30 minutes a day
- Limit alcohol intake
- Eat a balanced diet
- Avoid smoking
- Perform regular self-checks
- Attend recommended screenings



For more information: www.nationalbreastcancer.org

TAKE ACTION
KNOW YOUR NUMBERS
GET SCREENED REGULARLY
SEEK FOLLOW-UP CARE WHEN NEEDED

MADE BY: FGCU BSN COMMUNITY & PUBLIC HEALTH STUDENT




SCREENING SAVES HEARTS!

EARLY DETECTION CHANGES OUTCOMES!


When to Seek Follow-Up Care

- BLOOD PRESSURE READINGS ARE CONSISTENTLY HIGH OR LOW
- PULSE FEELS IRREGULAR, FAST, OR UNUSUALLY SLOW
- ONGOING SYMPTOMS SUCH AS DIZZINESS, CHEST DISCOMFORT, SHORTNESS OF BREATH, OR SWELLING
- SYMPTOMS DO NOT IMPROVE OR WORSEN OVER TIME
- A HEALTHCARE PROVIDER RECOMMENDS FURTHER EVALUATION




WHY IT MATTERS

- HEART CONDITIONS OFTEN HAVE NO SYMPTOMS
- SIMPLE SCREENINGS CATCH PROBLEMS EARLY
- EARLY CARE PREVENTS SERIOUS COMPLICATIONS



HOW TO GET SCREENED

- FREE COMMUNITY HEALTH CLINICS
- COMMUNITY CENTERS, SHELTERS, AND CHURCHES
- MOBILE SCREENING EVENTS AND HEALTH FAIRS
- PUBLIC HEALTH AND NONPROFIT PROGRAMS




SCAN HERE FOR MORE INFORMATION!

HEART HEALTHY DIET: NUTRITION FOR CARDIOVASCULAR HEALTH

Created by: FGCU BSN Community Health Students

What is a Heart Healthy Diet?

A heart healthy diet is an eating pattern that supports cardiovascular function by helping maintain healthy blood pressure, cholesterol levels, and body weight.




Fruits and Vegetables

It is important to eat at least 5 servings of fruits and vegetables per day.

Fruits: 1 to 2 cups of fruit daily

Vegetables: 2-3 cups of vegetables daily



Types of Fats

Trans Fats:


- Found in processed and fried food
- Strongly linked to increased risk of heart disease

Unsaturated Fats:

- Found in olive oil, nuts, seeds, fish, and avocados
- Help lower LDL cholesterol and reduce inflammation
- Support heart and blood vessel health


Saturated Fats:

- Found in red meat, butter, cream, and full-fat dairy
- Increase LDL cholesterol levels
- High intake is associated with increased risk of heart disease




Sodium

- Reducing sodium intake helps lower blood pressure, cholesterol levels, and support overall cardiovascular health
- Most adults should limit sodium to less than 2,300 mg per day
- Lower intake may benefit individuals with hypertension or heart disease



Types of Cholesterol

- LDL (Low-Density Lipoprotein):** Often referred to as "bad" cholesterol; high levels increase cardiovascular risk
- HDL (High-Density Lipoprotein):** Known as "good" cholesterol; helps remove excess cholesterol from the bloodstream



SCAN HERE FOR MORE INFORMATION!