

[View as Webpage](#)



[Become A Member](#)

Insights Newsletter

It is the mission of the Irwindale Chamber of Commerce to BUILD solid relationships and provide quality services which SUPPORT chamber members and businesses, in order to DRIVE the economic vitality of our community.

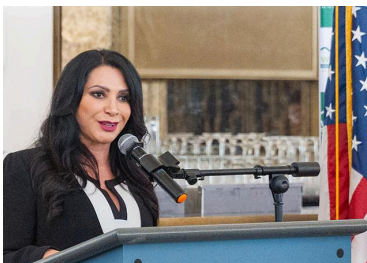
News & Updates

February 2026 | Volume 46, Issue 6

Santa Anita Park Hosts Irwindale Chamber's 46th Board Installation & Awards Brunch



Installation guests in Santa Anita Park Chandelier Room.



Sen. Rubio makes special appearance to honor Irwindale Chamber and its members.



Hillgren thanks chamber CEO and board team before handing over the



Traino greets the audience and shares vision for 2026.

The Irwindale Chamber of Commerce held its 46th Annual Board Installation and Awards on January 23, 2026, at Santa Anita Park, recognizing local businesses, nonprofit organizations, and community leaders for their contributions and service. The program opened with remarks from Chamber President and CEO Lily Phan, and sponsorship and VIP recognition by Presenting Sponsor IDS Real Estate VP, Hugh Seifert. The event was especially honored to have Senator Susan Rubio who came to show support and to give certificates to the chamber honorees.

The morning started out with the ceremonial Passing of the Gavel, with 2025 Board Chair Steven Hillgren introducing Matt Traino as the 2026 Chair of the Board.



Steven Hillgren (left) handing gavel to Matt Traino (right) Chair of 2026.

Santa Anita Park (SAP) received the Joe DiShanni Business of the Year Award, honoring its impact on the local economy and its role as a historic venue and community gathering place. This year SAP was recognized for its generosity in aiding fire relief efforts during the 2025 LA fires. The venue was also acknowledged by the Los Angeles County Board of Supervisors as one of nine “Eaton Fire Community Heroes.” The Chamber team assembled a video highlighting the Eaton Fires Response at the SAP parking lot in January 2025 where scores of participating companies and agencies were distributing food and clothing to victims and their families.

The program proceeded with the board installation, sworn in by Mayor H. Manuel Ortiz. The new board team was thoroughly prayed over by Pastor Tim Anderson of Calvary Chapel Burbank to kick off the start of the new term.

The board team gained 4 new members this year, including Paxton Gross of Georg Fischer LLC, Paul Heredia of Kaiser Permanente, Denaee Amaya of Athens Services, and Eric Dritley of Kearny Real Estate who all bring relevant expertise and strong support for the chamber under the leadership of the incoming Chair Matt Traino.



Board members cheering incoming members.



Pastor Tim Anderson prays over the new Irwindale Chamber Board.

List of Honorees



2026 Joe Di Shanni Business of the Year
Chelsea Jones
Santa Anita Park



2026 Business Ambassador of the Year
Christina Held
Foxdale Properties, LLC



2026 Businessperson of the Year
Gaby Flores
Le Meridien Hotel Pasadena Arcadia



2026 Spirit of the Chamber
Kam Kalantari
Rize Credit Union



2026 Non-profit of the Year
Steve Gunther
Maryvale



2026 Citizen of the Year
Linda Marez



Lucy Lin represented David Reynoso to make his acceptance speech for the Employee of the Year

2026 Employee of the Year
David Reynoso
Absolute International Security



Left to right: Kam Kalantari, Rosemary Luna, Andre Saldivar, Chelsea Jones, Paxton Gross, Anita Ron, Gaby Flores, Anita Hernandez, Deneae Amaya, Matt Traino, and Ted Koerner.

2026 Board Officers

Chairman

Matt Traino
IDS Real Estate

Vice Chair

Ted Koerner
Martin Marietta

Treasurer

Gaby Flores
Le Meridien Pasadena Arcadia

Secretary

Anita Ron
BriteWorks, INC

Past Chair

Anita Hernandez

Joining them were the 2026 Board Directors: Chelsea Jones, Kam Kalantari, Krystle Barraza, Lucy Lin, Denaee Amaya, Andre Saldivar, Rosemary Luna, Paxton Gross, Eric Dritley and Paul Heredia. One of the standout moments of the installation was the auction, which added energy and excitement to the event. With a great mix of luxury getaways, Lakers tickets, hotel stays, gift baskets, etc. the auction saw enthusiastic participation and generous support. The funds raised play a significant role in helping the Chamber continue its work in supporting local businesses, advocating on their behalf, and creating programs that benefit the community year-round. Overall, the awards, board installation, and auction came together to make the 46th Annual Board Installation and Awards a meaningful and memorable event.

The program concluded with a delicious reception hosted by Santa Anita Park, after which attendees were invited to continue networking and enjoy a Day at the Races featuring live horse racing.



Guests in food line in Chandelier Room.



Arlene Miranda and son Casey Miranda (Planning Commissioner) looking through race booklet.

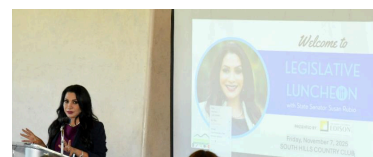
Legislative Luncheon with Senator Rubio



CEO Lily Phan introduces keynote speaker Sen. Rubio.



Sen Rubio and chamber staff G. Camacho and A. Anaya.



Sen. Rubio discusses key topics before Irwindale Chamber businesses.

The Irwindale Chamber and Presenting Sponsor, Southern California Edison, had the honor of having Senator Susan Rubio as keynote speaker for its 4th quarter legislative forum in 2025, held at the prestigious South Hills Country Club in W. Covina. The 70 guests were treated to a delicious Italian buffet set outdoor. Among the topics shared were the risk of AI companionship among youth, the impact of federal policies on the San Gabriel/LA area business community.

Southern California Edison (SCE) and BriteWorks were recognized as the Chamber's Businesses of the Month. The SCE team was honored for hosting and contributing to the highly successful October Job and Career Fair, which attracted nearly 600 attendees. BriteWorks was commended for its strong commitment to the community, serving as a donor and sponsor of key local events, providing motivational speaking at Chamber functions, volunteering time to support Chamber initiatives, and offering leadership on the Chamber Board.

Both businesses received certificates of recognition from Senator Rubio's Office, Assembly member Rubio's Office, and Representative Cisneros' Office, whose representatives were present in support of the Senator and the Irwindale business community. The luncheon concluded with an engaging Q&A session, giving guests the opportunity to ask questions and share their input.



Left to right: Sen. Rubio District Rep S. Hernandez, G. Ruiz, Sen. Rubio; REP Cisneros District Rep. S.Hernandez, ASM Rubio District Rep. A.Cassanova, Jade Centeno.



Pledge of Allegiance led by Irwindale Mayor H. Manuel Ortiz.



Irwindale Chamber President Phan starts the luncheon with opening remarks..



Left to right: Lucy Lin, AIS and board member; David Reynoso, Acting Ambassador Chair; Anita Ron, CEO BriteWorks and board member; Eric Ron, Ambassador.



City of Irwindale Table, left to right: Councilman M. Garcia, Councilman A. Ambriz and Annie Ambriz, Mayor Pro Tem M. H.M. Ortiz, Iris Espino, Elsa Koo, and Linda Garcia.



Pooya Mahmoudian, Board member Paxton Gross, Board member Kam Kalantari, Frances Harsono.



Senator Rubio, BriteWorks CEO Anita Ron and son Eric Ron, and Chamber President Lily Phan.



Marissa Castro-Salvati of SCE co-MC'd the event with President Lily Phan.



Senator Rubio, Abel Cassanova (left), Lily Phan, Stephanie Hernandez (right) with honoree SCE staff (center).

First Ever Networking Brunch at Newly Renovated Georg Fischer Building in Irwindale



President Lily reads off list of Businesses of the Month, with November honoree Anita Ron of BriteWorks (on right), and Ambassador Sona (on left).

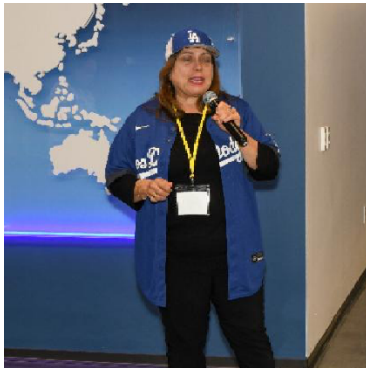
The last networking mixer of 2025 took place at the newly renovated Georg Fischer building. Due to rain the event was moved inside, which gave the 35 guests a good glimpse of the swanky GF building interior. The event was planned during the World Series and ICOC wove in the Dodgers theme (a 'repeat' of 2024 when the new member orientation also celebrated the boys in blue's 2024 World Series victory).

Decorations and prizes were mostly *blue*, and the happy fans came dressed in their best Dodger gear. The agenda was run as usual but with many new companies in attendance and had a new member caterer, Waffa's Kitchen, presenting a full Middle Eastern brunch spread with shawarma, hummus, kibbeh, wara aynaab (stuffed grape leaves), fresh out of the oven mahmoul and bakhlavah for desserts.

Present were Payroll Vault, Rogers & Associates, OPPSWell, Rize CU, Amanda Price Designs, Marriott Monrovia, Hilton Pasadena, Monterey Park Chamber of Commerce and guest businesses, El Monte Chamber of Commerce, Baldwin Park Business Association, Action Public Adjusters, Danny Lee Consulting, Le Meridien Hotel Pasadena, Mt SAC, OFL, E-marketing Associates, SCE, Spectrum, Human Interest, GF, and REACH. These companies came from as far as Ontario and Las Vegas to the east and Pasadena/Monterey Park to the west of Irwindale, creating a highly dynamic networking environment.

Door prizes were raffled out after the highly charged elevator pitches made by the 25+ companies in attendance.

Georg Fischer Signet was formed in 1802 in Switzerland. The company currently has a presence in 46 countries, including the US. Its Irwindale site focuses on high-performance components for water treatment, including pH/ORP, flow, conductivity, and dissolved oxygen sensors. GF specializes in safe transport of liquids and gases and has been developing and manufacturing sensors, transmitters, and instruments for water and chemical applications for over six decades.



CEO Anita Ron pitches BriteWorks' successful business month.



Ade Rogers elevates Payroll Vault's work in the community.



Stephanie Harrison highlights Action Public Adjusters' unique service.



Alfonso and Sona reading off winning raffle ticket.



Bianca Quezada of OFL won wine bottle donated by Payroll Vault.



Alfonso advertising upcoming events.



President Lily reads off list of Businesses of the Month, with November honoree Anita Ron of BriteWorks to the left, and Ambassador Sona to the right.



Victoria Rogers (Payroll Vault), Aysha Haaq (AIS), Kam Kalantari (Rize CU), and Jill Dolan (MT SAC)



Stephanie Harrison is the happy winner of the signed Dodgers photo.



Guests enjoying the Middle Eastern spread at the dining area.



GF, BriteWorks, Hilton Pasadena.



Networking taking place at baseball themed cocktail tables.



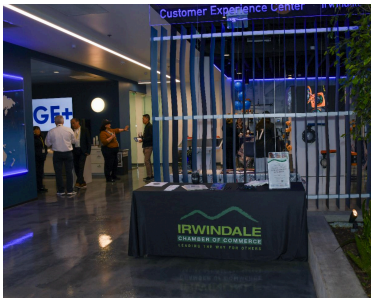
Stephen Blaine of Courtyard by Marriott Monrovia.



Carolina Ruiz Wills of West Coast Property.



Sabrina Bow of Shepherd's Pantry.



Marketing table.



Paxton Gross, GF host.



Monterey Park and El Monte Chamber representatives.

2025 Irwindale Chamber Holiday Luncheon & Milestone Recognition



The festive Irwindale Chamber Christmas celebration was held at Le Meridien Hotel Pasadena for the second year in a row. The chosen venue was fully adorned with a 10-foot Christmas tree, accompanied by Santa Claus on his velvety sofa, and his helpful elves bouncing up and down to keep the party rhythm flowing. The nearly 100 guests were divided into 12 tables to compete in the longtime chamber tradition singing competition of the 12 Days of Christmas, which *Day 9 table (SoCal Gas)* took the trophy this year.



Elf Nel and Elf Nicole at the registration table.



Chamber staff, ambassadors and Santa.



SoCalGas table 9, winner of the singing competition.

The chamber team also added a twist to the milestone recognition by having ‘Shohei Ohtani’ video-in his congratulations to the 18 milestone honorees. CEO Lily had the honor of passing out

Welcome New Members!

PROone
• PRODUCTIONS •
CREATIVE SOLUTIONS

 **OPPSWell**

**TRENDY
THAI** 



DECEMBER
Business of the Month

COURTYARD[®]
BY MARRIOTT

[Website](#)

This month, we are featuring Courtyard by Marriott Monrovia, a top choice for travelers seeking

personalized Dodger hats to the 45-year members, honoring both the chamber milestones and the Dodgers for winning back-to-back World Series.



Anita Hernandez of City Brewing Company crowned a Dodger fan alongside the other 45-year milestone members.

Towards the end of the program, Santa's 2 elves brought to stage a giant blank check of \$1000 to be given to the 2026 Non-Profit of the Year. And as Irwindale holiday tradition has it, the event ended with all guests leaving with a case of 'homebrew' beer by the Irwindale City Brewing Company (formerly Coors/Miller).



Elves Aysha, Nel, and Sona in front of the City Brewery beer tree.

[Read More](#)

Why Join the Irwindale Chamber of Commerce?

The success of the **Job & Career Fair** and **Legislative Luncheon Series** reflects the **Irwindale Chamber's** ongoing mission to create opportunities for business success.

comfort and convenience. With modern rooms, inviting common areas, and attentive staff, the hotel offers a seamless experience for both businesses and guests.

Beyond accommodations, Courtyard by Marriott Monrovia is a hub for meetings, events, and social gatherings, supporting the local community while welcoming visitors from near and far. Their commitment to excellent service and a welcoming atmosphere makes them a standout in Monrovia's hospitality scene. We're proud to honor them as our Business of the Month.

JANUARY Business of the Month

REALTYONEGROUP

[Website](#)

Sona Baghdassarian is a highly respected real estate professional with over 30 years of experience and multiple NAR designations, including Senior Real Estate Specialist and Green Realtor. She partners with local cities and attorneys to host workshops on real estate, estate planning, and VA services, and has led First-Time Home Buyer classes for eight years.

Sona is a Business Ambassador for the Irwindale and San Dimas Chambers, she volunteers at senior centers providing free notary services and is launching the San Gabriel Valley Business Leads Alliance to foster regional growth. Sona is also active with Homenetmen and has been honored as Woman of

Members of the Chamber enjoy access to:

- ✓ **Exclusive networking events** that foster business growth
- ✓ **Advocacy and support** to help businesses thrive in the community
- ✓ **Marketing and promotional opportunities** to increase visibility

For those looking to **expand their network, gain business exposure, and become part of a thriving business community**, joining the Irwindale Chamber of Commerce is a smart investment.

Stay Connected!

If you missed this event, don't worry—the Irwindale Chamber of Commerce regularly hosts **networking and business development events** to support its members. Be sure to follow the Chamber and stay informed about upcoming opportunities to **connect, grow, and succeed**.

📍 For membership details and future events, visit [The Irwindale Chamber of Commerce](#) or contact us today!

Irwindale Chamber of Commerce wishes you a Happy Lunar New Year!



Upcoming Events

Tuesday
February 17

Tuesday
March 13



WELCOME
City of
IRWINDALE

IRWINDALE
CHAMBER OF COMMERCE

The Irwindale Chamber of Commerce and the City of Irwindale invites you to

THE MAYOR'S RECEPTION

Join us for an evening reception with
Mayor H. Manuel Ortiz



CITY BREWING COMPANY
15801 W. 1ST, IRWINDALE, CA 91706

TUESDAY, FEBRUARY 17, 2026 | 5-7 PM
REGISTRATION OPENS AT 4:30 PM

\$40 FOR MEMBERS | \$55 FOR NON-MEMBERS
Dinner and refreshments will be served.

REGISTER NOW

Special Thanks to our Sponsors

Platinum Sponsor: IRWINDALE
Presenting Sponsor: KEARNY Real Estate Company
Title Sponsors: Martin, Pacific States, SoCalGas, American Services, EDISON
Major Sponsors: Vulcan




MULTI-CHAMBER BUSINESS MIXER

Irwindale, Baldwin Park, El Monte/S El Monte

MEET. PROMOTE. NETWORK.

Friday, March 13
10:00 - 11:30 AM (Registration opens at 9:30)
\$35 for Irwindale, Baldwin Park & El Monte/S El Monte Members | \$50 for Non-Members

JOIN US AT
CITY BREWING COMPANY
15801 First St, Irwindale, CA 91706 (Brew Yard Pub)

Register Now: irwindalechamber.org/mixer

THANK YOU TO OUR SPONSORS

SUPPORTING SPONSORS: Foothill Transit, Martin, Kaiser Permanente

SCAN TO REGISTER

SPONSORSHIP OPPORTUNITIES AVAILABLE!
For more information, contact the Irwindale Chamber of Commerce: admin@irwindalechamber.org

Major's Reception
5 - 7 PM
City Brewing Company
Irwindale, CA

REGISTER

Joint Chamber Networking Brunch
10:00 - 11:30 AM
City Brewing Company
Irwindale, CA

REGISTER

Wednesday
February 25

Tuesday
March 26



IF YOU CAN NEVER GET ENOUGH
BOOKS
INTO THE HANDS
OF ENOUGH
CHILDREN



INSPIRE A LOVE OF READING
Help us expand
Dolly Parton's Imagination Library in the
West San Gabriel Valley region by joining our
Community Meet, Greet & Discussion
Wednesday, February 25, 2026.
10:30am

Co-Hosted by: Rize Credit Union
Location: 12701 Schabarum Ave.
Irwindale, CA 91706

[RSVP Here](#)

Dolly Parton's Imagination Library is dedicated to inspiring a love of reading by gifting books free of charge to children from birth to age five, through funding shared by Dolly Parton and local community partners in the United States, United Kingdom, Canada, Australia and Republic of Ireland.

WANT TO CONNECT?
MANISHA BRAITHWAITE
Community Engagement Coordinator
Dolly Parton's Imagination Library Of California
(79) 221-6162 | imaginationlibrary.com
mbraithwaite@ca.imaginationlibrary.com

Save the Date

46TH ANNUAL GOLDEN PLATE AWARDS
SEEDS OF HOPE
PLANTED BY OUR COMMUNITY HEROES

THURSDAY, MARCH 26TH, 2026
11:30 AM TO 1:30 PM

COURTYARD MARRIOTT MONROVIA
700 W. HUNTINGTON DR.
MONROVIA, CA 91016

TO BECOME A DISTINGUISHED SPONSOR VISIT:
FOOTHILLUNITY.ORG/GALA



Dolly Parton Imagination Library Community Meet, Greet, & Discussion

10:30 am
12701 Schabarum Ave.
Irwindale, CA

REGISTER

46th Annual Golden Plate Awards Seeds of Hope

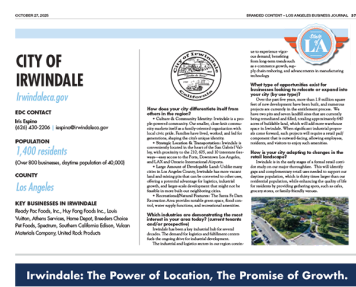
11:30 AM - 1:30 PM
Courtyard Marriott- Monrovia

★ Member News

Irwindale among Best Cities to Live, Work, & Play

LA Business Journal

The October LA Business Journal highlights cities within LA County and its surroundings, utilizing data and Q&As with local officials. The feature article showcases cities and their unique strengths in culture, entertainment, and quality of life.



Make a Difference

Rio Hondo CDC invites community members to get involved by joining our general membership program. As a member, you can support affordable housing, economic development, and neighborhood revitalization efforts across the San Gabriel Valley.

For more information, please contact:
Kenneth Ferreira | Executive Director
Rio Hondo Community Development Corporation
11401 Valley Blvd | Suite 207 | El Monte, CA 91731
T: 626.401.2784 | kenfer@riohondocdc.org
www.riohondocdc.org

Learn More



Rio Hondo Community Development Corporation
Make A Difference

RHDCDC is building a network of engaged community members who believe in affordable housing, economic development, and revitalizing underserved neighborhoods.

As a general member, you'll receive:

- Invitations to exclusive events and community forums
- Opportunities to serve on committees and task forces
- Early updates on RHDCDC programs and housing initiatives
- A voice in shaping the future of local development

Who Should Join
Residents, business owners, educators, service providers, and anyone committed to making a difference in the San Gabriel Valley.

How To Join
Complete a short interest form at: <https://riohondocdc.org/join>
Or scan the QR Code

Rio Hondo Community Development Corporation
11401 Valley Blvd #207
El Monte, CA 91731
info@riohondocdc.org
www.riohondocdc.org

Ontario & Upland are offering new housing support

Ontario Offers Homeowner Financial Assistance:

The city is offering the "Keys to Community" program to assist potential and current homeowners. [Submit an interest form here](#)

- First Time Homebuyer Program: Provides up to a \$120,000 deferred loan for down payment and closing costs.



- Housing Rehabilitation Loan: Offers a \$30,000 no-interest loan for eligible homeowners to make essential home repairs like roofing, plumbing, and electrical work.
- Exterior Beautification Grant: Provides up to \$10,000 for homeowners to make façade repairs, including painting, siding, and landscaping. For more information, you can email the city at KeysToCommunity@OntarioCA.gov

Upland Provides Grants for Property Owners:

The city is offering grants of up to \$50,000 for owners of small multi-family properties (eight units or fewer) to make exterior repairs and safety upgrades. To qualify, the property must be at least 51% occupied by low- to moderate-income households. For more information, contact the Housing Division at 909-931-4300.

Whether you're looking to buy, sell, or simply curious about your home's current value, I'm here to help.

[What's my home worth?](#)

Job Postings

Meet your next employer - [Register Now!](#)



Absolute Security International is hiring in-office and guard positions!

[Careers Page](#)



Athens Services is now hiring at their Irwindale locations!

[Careers Page](#)



BriteWorks is now hiring!

[Application Form](#)



City Brewery Irwindale is now hiring!

[Careers Page](#)



City of Hope is hiring at their Irwindale location!

[Careers Page](#)



City of Irwindale is now hiring!

[Careers Page](#)



Foothill Transit is now hiring!

[Careers Page](#)



Georg Fischer Signet is now hiring at their Irwindale location!

[Careers Page](#)



Groupe Bonduelle is hiring at their Irwindale location!

[Careers Page](#)



Kaiser Permanente is now hiring at their Irwindale location!

[Careers Page](#)



Martin Marietta is now hiring at their Irwindale location!

[Careers Page](#)



Rexford Industrial is now hiring!

[Careers Page](#)



Rize Credit Union is hiring at their Irwindale HQ!

[Careers Page](#)



Santa Anita Park is now hiring!

[Careers Page](#)



Southern California Edison is now hiring at their Irwindale location!

[Careers Page](#)



Vulcan Materials is now hiring at their Irwindale location!

[Careers Page](#)

- [Become a Member](#)
- [Calendar](#)
- [Staff & Board of Directors](#)



To ensure that you receive our emails, please add us to your Contacts & Safe Sender list.

Lily Phan, President & CEO: ceo@irwindalechamber.org

Angelica Rodriguez, Communications Coordinator/Staff Assistant: angelica@irwindalechamber.org

[View as Webpage](#)



Try email marketing for free today!