



Comprehensive Downpipes & Accessories

Downpipes & Accessories

KFC Roofing supplies an extensive range of Round Downpipes, complementing all types of gutter systems. Downpipes are available with a full range of standard accessories as well as fully customised fabrications.

Materials & Finishes

Refer to metals compatibility chart prior to selection. For COLORBOND ULTRA®, COLORBOND® is used, as interior coating is identical.

Material	Gauge
ZINCALUME® Steel	0.55mm
COLORBOND® Steel	0.55mm
Galvanised Steel	0.55mm
Stainless Steel 304 and 316 Grades	0.55mm
PREFA® Aluminium (Painted)	0.70mm
Rheinzink Titanium Zinc	0.70mm
VM Zinc Quartz	0.70mm
Copper	0.60mm

Round Downpipes

Round downpipes can be supplied to match conventional and half round gutters. Combined with Half Round Gutters, Round Downpipes provide excellent performance and aesthetic properties.

For range, materials, and lengths, see page 3.

For architectural downpipes, see our stainless steel downpipe brochure.

Accessories

KFC Roofing provides the widest range of imported and manufactured accessories including Nozzles, Chinahats, Ventilation caps and more. See pages 4, 5 & 6 for full range.

Astragals & Clamps

Astragals, downpipe clamps and downpipe straps can be supplied to match all stocked diameters of Round Downpipe.

For range and materials, see page 6 & 7.

Smooth Bends

With the largest range of Elbows and S Curves imported from Europe, KFC Roofing Supplies offers smooth transitions with a clean finish.

For availability and angles see page 8.

Elbows can be combined with downpipe sections to allow the offset distance to be infinitely customisable. Downpipe sections do not require expanded ends when joined to elbows.

Contact us to enquire about custom mitred offsets or mitred elbows.

Click-On Outlets

Click-On Outlets provide up to 33% more water flow and are largely self cleaning. The use of Click-On Outlets significantly reduces installation time, particularly when paired with European Bead Half Round Gutter. Furthermore, when combined with European Bead, no rivets are required and no scalloping of the downpipe is required.

For range and materials, see page 5.

Product Range

Downpipes

Diameter	Length	ZA	Ga	CB	SS	Cu	RZ	VMQ	PREFA
75mm	1.8m	✓	✓		✓				
	2.4m	✓	✓	✓	✓				
80mm	3.0m		✓			✓	✓	✓	✓
90mm*	2.4m	✓	✓	✓	✓				
	3.0m	✓		✓					
*Cut to length 1.0 - 6.0m available. Subject to minimum order quantity, colour availability, and lead time.									
100mm*	2.4m	✓	✓	✓	✓				
	3.0m	✓	✓	✓		✓	✓	✓	✓
	4.0m	✓	✓	✓					
*Cut to length 1.0 - 6.0m available. Subject to minimum order quantity, colour availability, and lead time.									
150mm	2.4m	✓	✓	✓	✓	✓			
	3.0m	✓	✓	✓		✓			✓
	4.0m	✓	✓	✓					

CB: COLORBOND® Steel
Cu: Copper
Ga: Galvanised Steel

PREFA: PREFA® Aluminium
SS: Stainless Steel
VMQ: VM Zinc® Quartz


ZA: ZINCALUME® Steel
ZMF: Zinc Mill Finish
ZP: Zinc Plated

Accessories


Miscellaneous

Nozzles	Diameter	Za	Ga	CB	SS	ZMF	Cu
 <p>SAP Code: NO*****</p>	50mm	✓	✓				
	80mm	✓	✓	✓	✓	✓	✓
	90mm	✓	✓	✓	✓		
	100mm	✓	✓	✓	✓	✓	✓
	150mm	✓	✓	✓	✓	✓	✓

China Hat	Diameter	Za	Ga	CB	SS	ZMF	Cu
 <p>SAP Code: CH*****</p>	50mm		✓		✓	✓	✓
	75mm	✓	✓	✓	✓	✓	✓
	100mm	✓	✓	✓	✓	✓	✓
	125mm	✓	✓	✓	✓		✓
	150mm	✓	✓	✓	✓	✓	✓
	175mm	✓	✓				
	200mm	✓	✓	✓	✓		✓
	250mm	✓	✓				

Reducer	Diameter	Za	Ga	CB*	SS	ZMF	Cu
 <p>SAP CODE: DPR*****</p>	100 / 80mm						✓
	100 / 90**mm			✓		✓	

*CB = Powder Coated Zinc Mill Finish **To suit 90mm stormwater

Pipe Cover	Diameter	Za	Ga	CB*	SS	ZMF	Cu
 <p>SAP CODE: PIPECOVER*****</p>	80 / 115mm			✓		✓	
	100 / 115mm			✓		✓	✓

*CB = Powder Coated Zinc Mill Finish

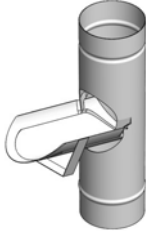
CB: COLORBOND® Steel
Cu: Copper
Ga: Galvanised Steel

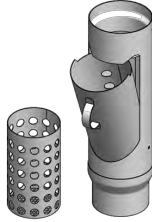
PREFA: PREFA® Aluminium
SS: Stainless Steel
VMQ: VM Zinc® Quartz

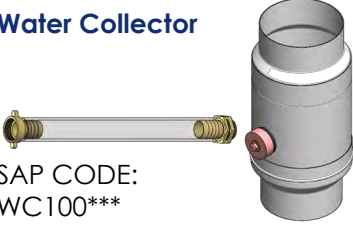
ZA: ZINCALUME® Steel
ZMF: Zinc Mill Finish
ZP: Zinc Plated

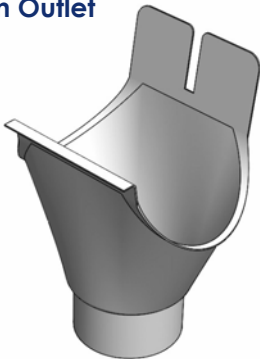
Miscellaneous (Continued)

Gutter Sieve Basket	Diameter	Za	Ga	CB	SS	ZMF	Cu
 SAP CODE: GSB*****	50mm		✓		✓		
	80mm		✓		✓		✓
	100mm		✓		✓		✓
	150mm		✓		✓		

Pipe Flap	Diameter	Za	Ga	CB*	SS	ZMF	Cu
 SAP CODE: PF*****	100mm	✓		✓		✓	✓
	*CB = Powder Coated Zinc Mill Finish						

Leaf Catcher	Diameter	Za	Ga	CB*	SS	ZMF	Cu
 SAP CODE: LC*****	100mm			✓		✓	✓
	*CB = Powder Coated Zinc Mill Finish						

Water Collector	Diameter	Za	Ga	CB*	SS	ZMF	Cu
 SAP CODE: WC100***	100mm			✓		✓	
	*CB = Powder Coated Zinc Mill Finish						

Click-On Outlet	Diameter	Outlet	Za	Ga	CB*	Al	ZMF	Cu	RZ
 SAP CODE: HRG***CO*****	100mm	80	✓		✓			✓	
	125mm	80	✓		✓			✓	
	150mm	80	✓		✓	✓		✓	✓
		90			✓	✓			
	200mm	100		✓	✓	✓	✓	✓	✓
		150	✓		✓				
	250mm	100			✓	✓			
		150			✓	✓			

*CB = Powder Coated Aluminium, ZINCALUME® Steel or Zinc Mill Finish

CB: COLORBOND® Steel
Cu: Copper
Ga: Galvanised Steel

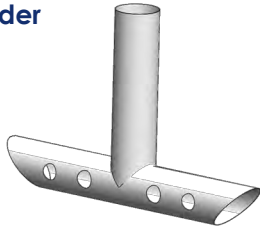
PREFA: PREFA® Aluminium
SS: Stainless Steel
VMQ: VM Zinc® Quartz

ZA: ZINCALUME® Steel
ZMF: Zinc Mill Finish
ZP: Zinc Plated

Accessories

Miscellaneous (Continued)

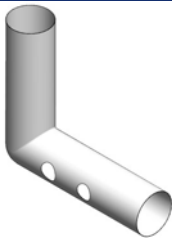
T Spreader



Diameter	Za	Ga	CB	Al	SS	ZMF	Cu	RZ
----------	----	----	----	----	----	-----	----	----

Custom Tradework. Enquire for Size and Material Availability.

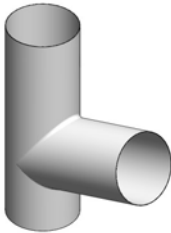
L Spreader



Diameter	Za	Ga	CB	Al	SS	ZMF	Cu	RZ
----------	----	----	----	----	----	-----	----	----

Custom Tradework. Enquire for Size and Material Availability.

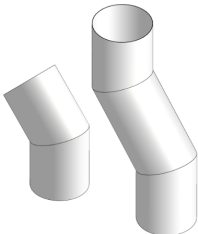
72° Downpipe Junction



Diameter	Za	Ga	CB	Al	SS	ZMF	Cu	RZ
----------	----	----	----	----	----	-----	----	----

Custom Tradework. Enquire for Size and Material Availability.

Mitred Elbow & Offset



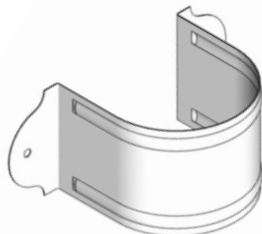
Diameter	Za	Ga	CB	Al	SS	ZMF	Cu	RZ
----------	----	----	----	----	----	-----	----	----

Custom Tradework. Enquire for Size and Material Availability.

Mitred Offset - Mitred Elbows

Astragals & Downpipe Clamps

Astragals



Diameter	Za	Ga	CB	SS	Cu
50mm	✓	✓			✓
80mm		✓			✓
90mm	✓	✓	✓	✓	
100mm	✓	✓	✓	✓	✓
150mm	✓	✓	✓	✓	✓


SAP CODE:
AST*****

CB: COLORBOND® Steel
Cu: Copper
Ga: Galvanised Steel

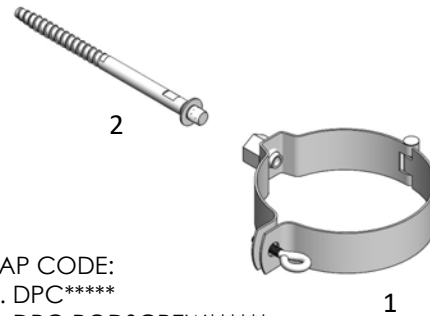
PREFA: PREFA® Aluminium
SS: Stainless Steel
VMQ: VM Zinc® Quartz

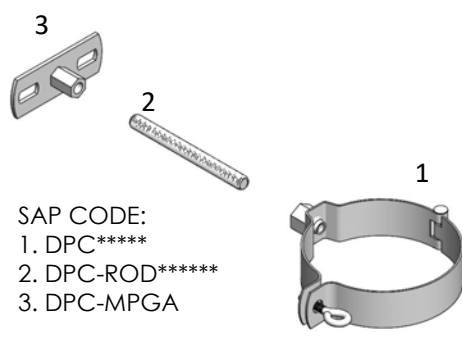
ZA: ZINCALUME® Steel
ZMF: Zinc Mill Finish
ZP: Zinc Plated

Downpipe Clamps

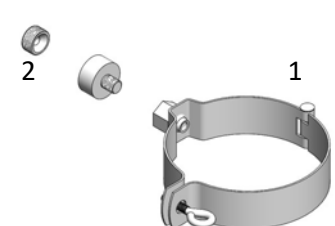
Downpipe Clamps with Spiked Clamp	Diameter	Al	Ga	CB*	SS	Cu
 <p>SAP CODE: 1. ASTSTO***** 2. ASTSTO-PLUGS</p>	80mm					✓
	100mm		✓	✓		✓

CB* = Powder Coated Galvanized

Downpipe Clamps with Rod Screw	Clamp Diameter	Al	Ga	CB*	SS	Cu	RZ
 <p>SAP CODE: 1. DPC***** 2. DPC-RODSCREW*****</p>	80mm	✓	✓	✓	✓	✓	✓
	90mm		✓	✓			
	100mm	✓	✓	✓	✓	✓	✓
	150mm	✓	✓	✓	✓	✓	
	Rod Screw Length	ZP	Ga	CB*	SS	Cu	ZP
	100mm	✓	✓	✓	✓		✓
	140mm	✓		✓	✓		

Downpipe Clamps With Threaded Rod & Mounting Plate	Clamp Diameter	Al	Ga	CB*	SS	Cu	RZ
 <p>SAP CODE: 1. DPC***** 2. DPC-ROD***** 3. DPC-MPGA</p>	80mm	✓	✓	✓	✓	✓	✓
	90mm		✓	✓			
	100mm	✓	✓	✓	✓	✓	✓
	150mm	✓	✓	✓	✓	✓	
	Threaded Rod Length	ZP	Ga	CB*	SS	Cu	ZP
	50mm			✓	✓		
	100mm			✓	✓		
	140mm			✓	✓		

CB* = Powder Coated Galvanized or Aluminium

Downpipe Clamps with Facade Adaptor	Diameter	Al	Ga	CB*	SS	Cu	RZ
 <p>SAP CODE: 1. DPC***** 2. DPC-FA</p>	80mm	✓	✓	✓	✓	✓	✓
	90mm		✓	✓			
	100mm	✓	✓	✓	✓		✓
	150mm	✓	✓	✓	✓	✓	
	Facade Adaptor	Al	Ga	CB*	SS	Cu	ZP
	OFFSET 40mm	✓	✓	✓			

CB* = Powder Coated Galvanized or Aluminium


CB: COLORBOND® Steel
Cu: Copper
Ga: Galvanized Steel

PREFA: PREFA® Aluminium
SS: Stainless Steel
VMQ: VM Zinc® Quartz

ZA: ZINCALUME® Steel
ZMF: Zinc Mill Finish
ZP: Zinc Plated

Accessories

Elbows

S Curve	Diameter	Za	Ga	CB*	Al	SS	Cu	RZ	VMQ
	80mm			✓	✓				✓
	100mm			✓	✓		✓		✓

SAP CODE: ELS****

CB* = Powder Coated Aluminium



Elbows	Diameter	Angle	Za	Ga	CB*	Al	Cu	RZ	VMQ
 40° Elbow	80mm	40°			✓	✓	✓	✓	✓
		72°			✓	✓	✓	✓	✓
		85°			✓	✓	✓	✓	✓
 72° Elbow	100mm	40°	✓		✓	✓	✓	✓	✓
		60°			✓				
		72°	✓		✓	✓	✓	✓	✓
 85° Elbow	150mm	85°	✓		✓	✓	✓	✓	✓
		72°			✓	✓			

SAP CODE: EL***40****

SAP CODE: EL***72****

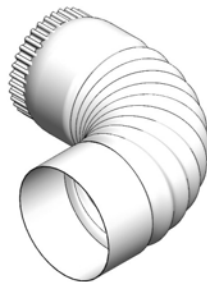
SAP CODE: EL***85****

CB* = Powder Coated Aluminium or Zinc Mill Finish

90mm Elbows	Diameter	Angle	Za	Ga	CB*	Al	SS	Cu	RZ
 45° Elbow	90mm	45°			✓	✓			
 90° Elbow	90mm	90°			✓	✓			

SAP CODE: EL90*****

CB* = Powder Coated Aluminium

Crimped Bend	Diameter	Angle	Za	Ga	CB	SS	Cu
	50mm	45°/90°	✓	✓	✓		
	75mm	45°/90°	✓	✓	✓		
	90mm	45°/90°	✓	✓	✓		
	100mm	45°/90°	✓	✓	✓		

SAP CODE: CB*****

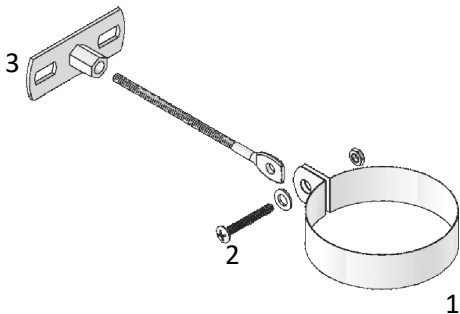
CB: COLORBOND® Steel
Cu: Copper
Ga: Galvanised Steel

PREFA: PREFA® Aluminium
SS: Stainless Steel
VMQ: VM Zinc® Quartz

ZA: ZINCALUME® Steel
ZMF: Zinc Mill Finish
ZP: Zinc Plated

Downpipe Straps to suit 90mm Round

Threaded Rod to Mounting Plate	Rod Length	Suitable OFFSET
--------------------------------	------------	-----------------



100mm
150mm

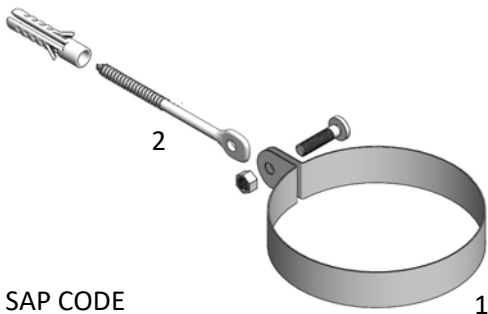
Suitable to fix into: **Timber, Metal** or **Mortar**

SAP CODE:

- 1. DPS90****
- 2. DPS-RODGA100 / DPS-RODSS316100
- 2. DPC-MPGA

Downpipe Strap with Threaded Rod Screw	Diameter	Za	Ga	CB	SS
--	----------	----	----	----	----

90mm ✓ ✓

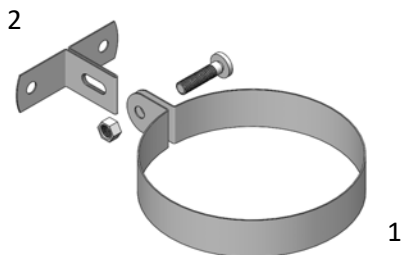


SAP CODE

- 1. DPS90****
- 2. DPS-RODSCREWGA100

Downpipe Strap with Plate	Diameter	Za	Ga	CB	SS
---------------------------	----------	----	----	----	----

90mm ✓ ✓



SAP CODE

- 1. DPS90*****
- 2. DPS-TBRACKET

CB: COLORBOND® Steel
Cu: Copper
Ga: Galvanised Steel

PREFA: PREFA® Aluminium
SS: Stainless Steel
VMQ: VM Zinc® Quartz

ZA: ZINCALUME® Steel
ZMF: Zinc Mill Finish
ZP: Zinc Plated

Contact & Ordering

Contact

Our expert team can consult with you on any questions regarding our product lines.

Address: Unit 2/42 Raymond Avenue
Matraville NSW 2036

Phone: (02) 9810 0915

Email: sales@kfcrs.com.au

Our Product Range

KFC Roofing Supplies stocks a complete range of roofing supplies for all projects and applications.

Browse our line of half round gutters [here](#), or view our complete range of roofing tools [here](#).

Contact us to discuss all range items, or come into our conveniently located Matraville showroom.

Ordering

To order, please contact sales and submit an order form.

