



Comprehensive Downpipes & Accessories

Downpipes & Accessories

KFC Roofing supplies an extensive range of Round Downpipes, complementing all types of gutter systems. Downpipes are available with a full range of standard accessories as well as fully customised fabrications.

Materials & Finishes

Refer to metals compatibility chart prior to selection. For COLORBOND ULTRA®, COLORBOND® is used, as interior coating is identical.

Material	Gauge
ZINCALUME® Steel	0.55mm
COLORBOND® Steel	0.55mm
Galvanized Steel	0.55mm
Stainless Steel 304 and 316 grades	0.55mm
PREFA® Aluminium (Painted)	0.70mm
Rheinzink Titanium Zinc	0.70mm
Copper	0.60mm

Round Downpipes

Round downpipes can be supplied to match conventional and half round gutters. Combined with Half Round Gutters, Round Downpipes provide excellent performance and aesthetic properties.

For range, materials, and lengths, see page 3.

For heavy duty downpipes, see our heavy duty storm water downpipe brochure.

Accessories

KFC Roofing provides the widest range of imported and manufactured accessories including china hats, ventilation caps and more.

See pages 4, 5 & 6 for full range.

Astragals & Clamps

Astragals, downpipe clamps and downpipe straps can be supplied to match all stocked diameters of Round Downpipe.

For range and materials, see page 6 & 7.

Smooth Bends

With the largest range of Elbows and S Curves imported from Europe, KFC Roofing Supplies offers smooth transitions with a clean finish.

For availability and angles see page 8.

Elbows can be combined with downpipe sections to allow the offset distance to be infinitely customisable. Use the MASC downpipe expander to properly overlap pipes, or order double end expanded pipes.

Contact us to enquire about custom mitred offsets.

Adjustable Offsets

Adjustable offsets are an efficient offset solution, significantly reducing installation time, while also being great for optics. Adjustable offsets have a 72° angle.

For range and materials, see page 8.

Clip On Outlets

Clip-On Outlets provide up to 33% more water flow and are largely self cleaning. The use of Clip-On Outlets significantly reduces installation time, particularly when paired with European Bead Half Round Gutter. Furthermore, when combined with European Bead, no rivets are required and no scalloping of the downpipe is required.

For range and materials, see page 5.

Product Range

Downpipes

Diameter	Length	ZA	Ga	CB	SS	Cu	RZ
75mm	1.8m	✓	✓		✓		
	2.4m	✓	✓	✓	✓		
	3.0m						
80mm	1.8m						
	2.4m						
	3.0m		✓			✓	✓
90mm*	1.0m	✓		✓			
	2.4m	✓		✓	✓		
	3.0m	✓		✓			
*Cut to length 1.0 - 6.0m available. Subject to minimum order quantity, colour availability, and lead time.							
100mm*	1.0m	✓	✓				
	2.4m	✓	✓	✓	✓		
	3.0m	✓	✓	✓		✓	✓
	4.0m	✓	✓	✓			
*Cut to length 1.0 - 6.0m available. Subject to minimum order quantity, colour availability, and lead time.							
120mm	2.0m	✓	✓			✓	
	3.0m	✓	✓	✓		✓	✓
	4.0m	✓	✓	✓		✓	
150mm	2.0m	✓	✓	✓		✓	
	2.4m	✓	✓	✓	✓	✓	
	3.0m	✓	✓	✓		✓	
	4.0m	✓	✓	✓			

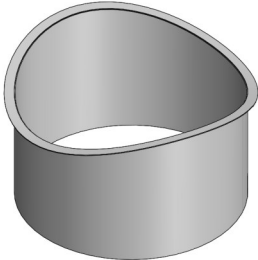
Al: PREFAL® Aluminium
CB: COLORBOND® Steel
Cu: Copper

Ga: Galvanized Steel
SS: Stainless Steel
RZ: Rheinzink Titanium Zinc


ZA: ZINCALUME® Steel
ZMF: Zinc Mill Finish
ZP: Zinc Plated

Accessories

Miscellaneous

Nozzles		Diameter	Za	Ga	CB	SS	ZMF	Cu
	50mm		✓	✓				
	80mm		✓	✓	✓	✓	✓	✓
	90mm		✓	✓	✓	✓		
	100mm		✓	✓	✓	✓	✓	✓
	120mm		✓	✓	✓		✓	✓
	150mm		✓	✓	✓	✓	✓	✓

China Hat		Diameter	Za	Ga	CB	SS	ZMF	Cu
	50mm			✓		✓	✓	✓
	75mm		✓	✓	✓	✓	✓	✓
	100mm		✓	✓	✓	✓	✓	✓
	125mm		✓	✓	✓	✓		✓
	150mm		✓	✓	✓	✓	✓	✓
	175mm		✓	✓				
	200mm		✓	✓	✓	✓		✓
	250mm		✓	✓				

Ventilation Cap		Diameter	Za	Ga	CB*	SS	ZMF	Cu
	80mm				✓		✓	✓
	100mm				✓		✓	✓
	120mm				✓		✓	

*CB = Powder Coated Zinc Mill Finish

Reducer		Diameter	Za	Ga	CB*	SS	ZMF	Cu
	100 / 80mm							✓
	100 / 90**mm				✓		✓	
	120 / 100mm				✓		✓	✓

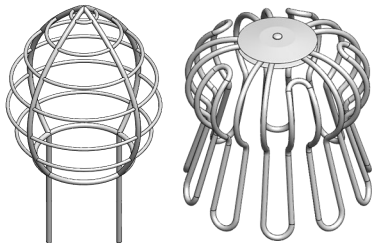
*CB = Powder Coated Zinc Mill Finish **To suit 90mm stormwater

Pipe Cover		Diameter	Za	Ga	CB*	SS	ZMF	Cu
	80 / 115mm				✓		✓	
	100 / 115mm				✓		✓	✓

*CB = Powder Coated Zinc Mill Finish

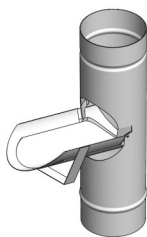
Miscellaneous (Continued)

Wire Cowl Baskets



Diameter	Za	Ga	CB	SS	ZMF	CU
50mm		✓		✓		
80mm		✓		✓		✓
90-100mm		✓		✓		✓
150mm		✓		✓		

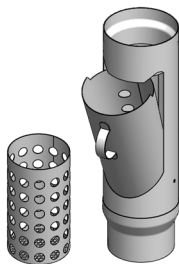
Pipe Flap



Diameter	Za	Ga	CB*	SS	ZMF	Cu
100mm	✓		✓		✓	✓

*CB = Powder Coated Zinc Mill Finish

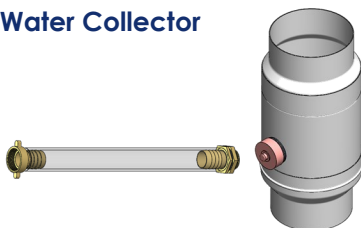
Leaf Catcher



Diameter	Za	Ga	CB*	SS	ZMF	Cu
100mm			✓		✓	✓

*CB = Powder Coated Zinc Mill Finish

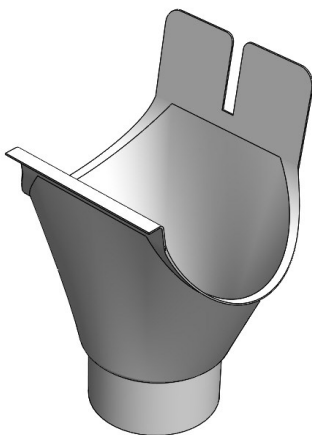
Water Collector



Diameter	Za	Ga	CB*	SS	ZMF	Cu
100mm			✓		✓	

*CB = Powder Coated Zinc Mill Finish

Clip-On Outlet



Diameter	Outlet	Za	Ga	CB*	Al	ZMF	Cu	RZ
100mm	80	✓		✓			✓	
125mm	80	✓		✓			✓	
150mm	80	✓		✓	✓	✓	✓	✓
	90			✓	✓			
200mm	100		✓	✓	✓	✓	✓	✓
	150	✓		✓				
250mm	150			✓	✓			

*CB = Powder Coated Aluminium, ZINCALUME® Steel or Zinc Mill Finish

Al: PREFAL® Aluminium
CB: COLORBOND® Steel
Cu: Copper

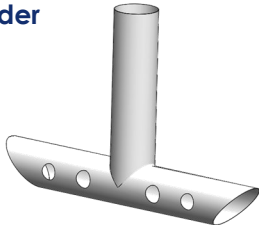
Ga: Galvanized Steel
SS: Stainless Steel
RZ: Rheinzink Titanium Zinc

ZA: ZINCALUME® Steel
ZMF: Zinc Mill Finish
ZP: Zinc Plated

Accessories

Miscellaneous (Continued)

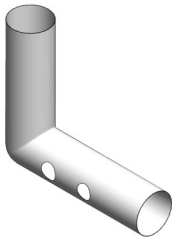
T Spreader



Diameter	Za	Ga	CB	Al	SS	ZMF	Cu	RZ
----------	----	----	----	----	----	-----	----	----

Custom Tradework. Enquire for Size and Material Availability.

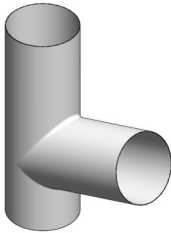
L Spreader



Diameter	Za	Ga	CB	Al	SS	ZMF	Cu	RZ
----------	----	----	----	----	----	-----	----	----

Custom Tradework. Enquire for Size and Material Availability.

72° Downpipe Junction

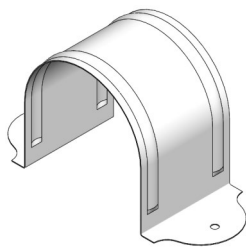


Diameter	Za	Ga	CB	Al	SS	ZMF	Cu	RZ
----------	----	----	----	----	----	-----	----	----

Custom Tradework. Enquire for Size and Material Availability.

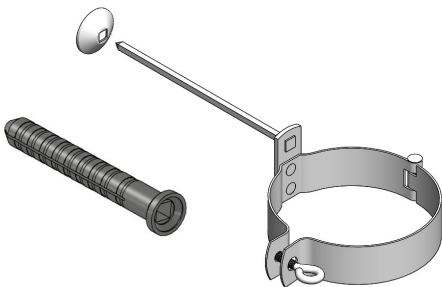
Astragals and Downpipe Clamps

Astragals



Diameter	Za	Ga	CB	SS	Cu
50mm	✓	✓			✓
80mm	✓	✓		✓	✓
90mm	✓	✓	✓	✓	
100mm	✓	✓	✓	✓	✓
120mm	✓	✓	✓		✓
150mm	✓	✓	✓	✓	✓

Downpipe Clamps with Spiked Clamp



Diameter	Al	Ga	CB*	SS	Cu
80mm		✓	✓		✓
100mm		✓	✓		✓
120mm		✓	✓		✓
150mm		✓			

CB* = Powder Coated Galvanized

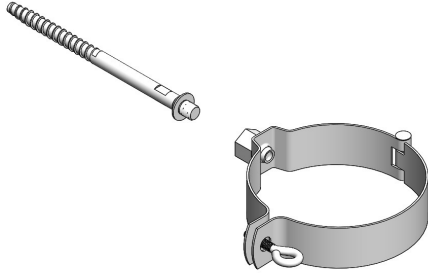
Al: PREFA® Aluminium
CB: COLORBOND® Steel
Cu: Copper
 ©KFC Roofing Supplies Pty Ltd 2018

Ga: Galvanized Steel
SS: Stainless Steel
RZ: Rheinzink Titanium Zinc

ZA: ZINCALUME® Steel
ZMF: Zinc Mill Finish
ZP: Zinc Plated

Downpipe Clamps (Continued)

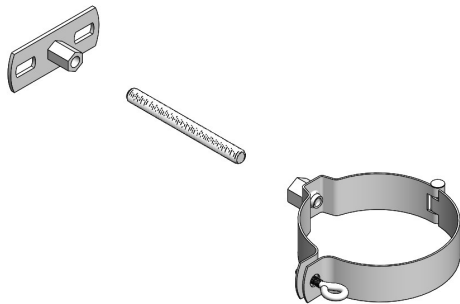
Downpipe Clamps with Rod Screw



Clamp Diameter	Al	Ga	CB*	SS	Cu	RZ
80mm		✓	✓	✓	✓	✓
100mm	✓	✓	✓	✓	✓	✓
120mm		✓	✓			
150mm		✓	✓			

Rod Screw Length	ZP	Ga	CB*	SS	Cu	Zn
100mm	✓	✓	✓	✓		✓
140mm	✓		✓	✓		

Downpipe Clamps With Threaded Rod & Mounting Plate

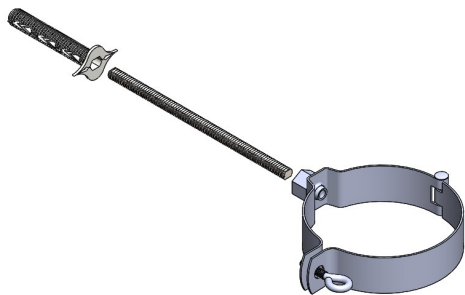


Clamp Diameter	Al	Ga	CB*	SS	Cu	RZ
80mm		✓	✓	✓	✓	✓
100mm	✓	✓	✓	✓	✓	✓
120mm		✓	✓			
150mm		✓	✓			

Threaded Rod Length	ZP	Ga	CB*	SS	Cu	Zn
50mm		✓	✓	✓		
100mm		✓	✓	✓		

CB* = Powder Coated Galvanized or Aluminium

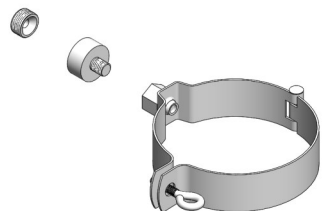
Downpipe Clamps with Drehfix Rotary Fix



Clamp Diameter	Al	Ga	CB*	SS	Cu	RZ
80mm		✓	✓	✓	✓	✓
100mm	✓	✓	✓	✓	✓	✓
120mm		✓	✓			
150mm		✓	✓			

Drehfix Rotary Fix Length	ZP	Ga	CB*	SS	Cu	Zn
100mm	✓		✓	✓		
150mm	✓		✓	✓		
200mm	✓		✓	✓		

Downpipe Clamps with Facade Adaptor



Diameter	Al	Ga	CB*	SS	Cu	RZ
80mm		✓	✓	✓	✓	✓
100mm	✓	✓	✓	✓	✓	✓
120mm		✓	✓			
150mm		✓	✓			

CB* = Powder Coated Galvanized or Aluminium


Al: PREFAL® Aluminium
CB: COLORBOND® Steel
Cu: Copper

Ga: Galvanized Steel
SS: Stainless Steel
RZ: Rheinzink Titanium Zinc

ZA: ZINCALUME® Steel
ZMF: Zinc Mill Finish
ZP: Zinc Plated

Accessories



Curved Bends

S Curve	Diameter	Za	Ga	CB*	Al	SS	Cu	RZ
	80mm			✓	✓			
	100mm			✓	✓		✓	


CB* = Powder Coated Aluminium

Elbows	Diameter	Angle	Za	Ga	CB*	Al	SS	Cu	RZ
 40° Elbow	80mm	40°			✓	✓	✓	✓	✓
		72°			✓	✓	✓	✓	✓
		85°			✓	✓	✓	✓	✓
 72° Elbow	100mm	40°	✓	✓	✓	✓		✓	✓
		60°			✓				
		72°	✓	✓	✓	✓	✓	✓	✓
 85° Elbow	120mm	85°	✓	✓	✓	✓	✓	✓	✓
		40°			✓				
		72°			✓				✓
	150mm	72°			✓	✓			

CB* = Powder Coated Aluminium or Zinc Mill Finish

90mm Elbows	Diameter	Angle	Za	Ga	CB*	Al	SS	Cu	RZ
 45° Elbow	90mm	45°			✓	✓			
 90° Elbow	90mm	90°			✓	✓			

CB* = Powder Coated Aluminium

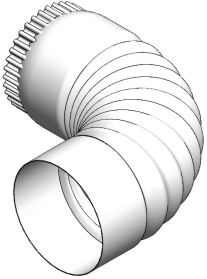
Adjustable Offset 72°	Diameter	Offset	CB	Cu	Al
	80mm	500-700mm	✓	✓	
	100mm	500-700mm	✓	✓	✓
	100mm	700-1100mm	✓	✓	

Al: PREFA® Aluminium
CB: COLORBOND® Steel
Cu: Copper

Ga: Galvanized Steel
SS: Stainless Steel
RZ: Rheinzink Titanium Zinc

ZA: ZINCALUME® Steel
ZMF: Zinc Mill Finish
ZP: Zinc Plated

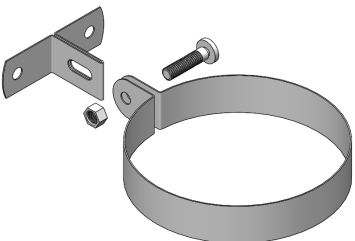
Curved Bends (Continued)

Crimped Bend		Diameter	Angle	Za	Ga	CB	SS	Cu
		50mm	45°/90°	✓	✓	✓		
		75mm	45°/90°	✓	✓	✓		
		90mm	45°/90°	✓	✓	✓		
		100mm	45°/90°	✓	✓	✓		

Downpipe Clamps Straps

Downpipe Strap with Hex Bolt					
	Diameter	Za	Ga	CB	SS
	90mm	✓		✓	

Downpipe Strap with Threaded Rod					
	Diameter	Za	Ga	CB	SS
	90mm	✓		✓	

Downpipe Strap with Plate					
	Diameter	Za	Ga	CB	SS
	90mm	✓		✓	

Al: PREFA® Aluminium
CB: COLORBOND® Steel
Cu: Copper

Ga: Galvanized Steel
SS: Stainless Steel
RZ: Rheinzink Titanium Zinc

ZA: ZINCALUME® Steel
ZMF: Zinc Mill Finish
ZP: Zinc Plated

Contact & Ordering

Contact

Our expert team can consult with you on any questions regarding our product lines.

Address: 8 Mansfield Street Rozelle, NSW 2039

Phone: (02) 9810 0915

Fax: (02) 9555 8909

Email: sales@kfcroofing.com.au

Training

KFC Roofing offers training workshops to ensure you gain the maximum benefit from your products.

Our Product Range

KFC Roofing Supplies stocks a complete range of roofing supplies for all projects and applications.

Browse our line of half round gutters [here](#), or view our complete range of roofing tools [here](#).

Contact us to discuss all range items, or come into our conveniently located Rozelle showroom.

Ordering

To order, please contact sales and submit an order form.

