



Retail For Lease

308 5th Ave. SE, Osseo, MN

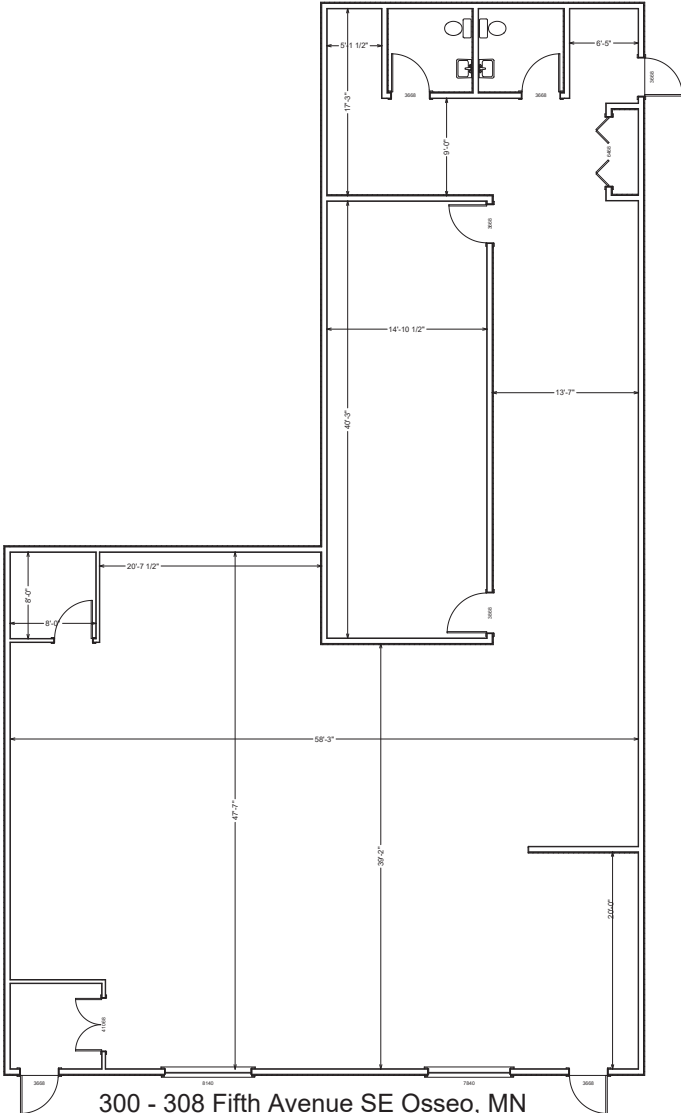
Mike Wiley
(612) 490-7052
mikewiley@wileyproperties.com

www.wileyproperties.com
315 1st Aveune NE, Osseo, MN 55369

Lease offering only. Details are approximate, subject to change without notice and should be independently verified.



Floor Plan



300 - 308 Fifth Avenue SE Osseo, MN
Total Square Footage - 4,461 SF

Mike Wiley
(612) 490-7052
mikewiley@wileyproperties.com

www.wileyproperties.com
315 1st Avenue NE, Osseo, MN 55369

Lease offering only. Details are approximate, subject to change without notice and should be independently verified.



Photos



Mike Wiley
(612) 490-7052
mikewiley@wileyproperties.com

www.wileyproperties.com
315 1st Avenue NE, Osseo, MN 55369

Lease offering only. Details are approximate, subject to change without notice and should be independently verified.



Demographics



Population 38,379



Median Age 40



Median Household Value \$112,541



Average Worker Earnings \$64,532



97%
High School Graduate



33%
Bachelor's Degree

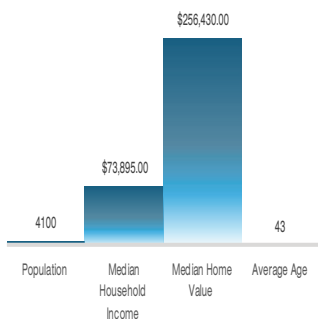


14%
Graduate/Professional Degree

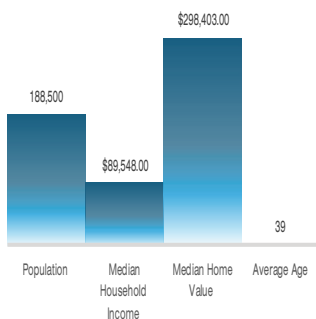


Total Businesses: ~1,587
Total Employees: ~28,724

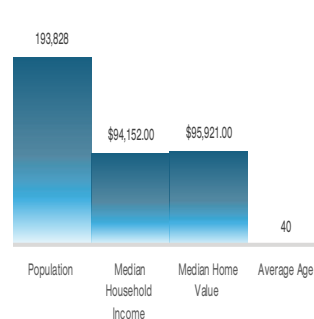
1 MILE RADIUS



5 MILE RADIUS



10 MILE RADIUS



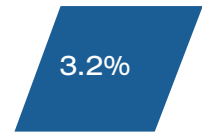
White Collar 82.41%



Blue Collar 17.59%



Self Employed 5.07%



3.2%
Unemployment Rate



Major Transportation Routes:

- » Jefferson Highway
- » U.S. Highway 169
- » Bottineau Boulevard (County Road 81)
- » Close Proximity to I-94 and MN-610

* All demographic data provided herein is approximate and intended for purposes only, accuracy is not guaranteed, and figures are subject to change. Prospective tenants are encouraged to conduct their own independent research and due diligence.

Mike Wiley
(612) 490-7052
mikewiley@wileyproperties.com

www.wileyproperties.com
315 1st Avenue NE, Osseo, MN 55369

Lease offering only. Details are approximate, subject to change without notice and should be independently verified.

