

# 128th SWAN HILL DISTRICT AGRICULTURAL & PASTORAL SHOW



# 2025 SCHEDULE

FRIDAY 3RD & SATURDAY 4TH OCTOBER



Swan Hill District Agricultural & Pastoral Society Inc.

Photo Supplied by Lucia Packer

[www.swanhillshow.com.au](http://www.swanhillshow.com.au)



Swan Hill District Agricultural & Pastoral Society Inc.

# WHITFIELD EXCAVATIONS SWAN HILL SHOW

Friday 3<sup>rd</sup> & Saturday 4<sup>th</sup> October 2025



## PRESIDENT'S MESSAGE 2025

As we count down the weeks to this year's Swan Hill Show, the excitement is building – and I can already feel the buzz starting to ripple through our wonderful community.

There's something truly special about the Swan Hill Show. It's more than just an event – it's a celebration of everything that makes our region so vibrant, resilient, and connected. Whether you've attended every year since childhood or you're planning your very first visit, the Show is a chance to come together, support local talent, and make memories that will last a lifetime.

While many details are still being finalised, I can promise this year's show will be packed with the family favorites we all know and love — along with some exciting new surprises!

Keep an eye out for our feature events and attractions, including fireworks, live music and our popular animal nursery. There will be something for everyone, from the tiniest toddlers to our seasoned showgoers.

I want to take this opportunity to thank the incredible volunteers, local businesses, sponsors, and community groups who help bring the show to life each year. Your dedication, generosity, and spirit are the backbone of this event — and we simply couldn't do it without you.

We're always on the lookout for new volunteers and community members who'd like to get involved. Whether you're handy with a hammer, keen to lend a hand on the day, or want to showcase your skills, we'd love to have you join the team. Getting involved is a great way to meet new people, give back to the community, and be part of something truly meaningful.

Mark the date in your calendar, round up your family and friends, and get ready for a fantastic few days of fun, connection, and country spirit. We can't wait to welcome you to the 2025 Swan Hill Show!

Warm regards,

Jessica O'Shea

President, Swan Hill Agricultural & Pastoral Society

## SWAN HILL DISTRICT A & P SOCIETY INC.

### OFFICE BEARERS 2025/2026

**President:** Jess O'Shea

**Vice President:** Leah Whitfield

**Immediate Past President:** Reg Packer

**Treasurers:** Kate Davison and Taylah Conlan

**Event Administration:** Melanie O'Loughlin

**Committee Members:** Jenny Asling, Ross Cox, Tricia Witney, Janette Davison, Nerida Morrish, David Wenzlau, Peter Angel, Carol Sutton.

**Life Members:** Gwen Blay, Dorothy Brasser, Ann-Louise Crowe, Janette Davison, Shirley Hall, Nanette Large, Reginald Packer, John Parsons, Carol Sutton, David Wenzlau, Tricia Witney, Laurel Parsons & Chris Bryan.

### SHOW OFFICE HOURS

1st September – 10th October

Monday – Friday - 9:30am – 5:00pm

**OUTSIDE OF SHOW TIMES:** 9am -3pm, Wednesdays

**SHOWTIMES:** - Friday 3<sup>rd</sup> October 9am-9pm,

Saturday 4<sup>th</sup> October 9am-5pm

### OFFICE CONTACTS

**Phone & Fax:** (03) 5032 4314

**Post:** PO Box 61, Swan Hill, VIC 3585

**Address:** 106 McCallum St, Swan Hill.

**Email:** enquiries@swanhillshow.com.au

**Website:** www.swanhillshow.com.au

**Facebook:** <http://swanhilldistrictshow>

### ADMISSION CHARGES

**Daily tickets:** Adult \$25, concession & student (secondary) \$10, student (primary) \$5, Child 5 & under Free.

**2 day pass:** Adult \$45, concession & student (secondary) \$15, student (primary) \$10, Child 5 & under Free.

Pension card must be shown to gain concession admission (aged and disability support pension only accepted).

Student ID to be used as proof of age.

## NORTHERN DISTRICT AGRICULTURAL

### SHOW DATES 2025/26

**Wentworth:** 30 - 31 August

**Swan Hill:** 3 - 4 October

**Kerang:** 6 October

**Boort:** 11 October

**Charlton:** 18 October

**Mildura:** 16 -18 October

**Barham/Koondrook:** 17 - 18 October

**Bendigo:** 24 - 25 October

**Echuca/Moama:** 8 - 9 November

**Deniliquin:** 6 -8 March 2026

**Wakool:** 7 March 2026

**Cohuna:** 13 - 14 March 2026



Swan Hill District Agricultural & Pastoral Society Inc.

# WHITFIELD EXCAVATIONS SWAN HILL SHOW

Friday 3<sup>rd</sup> & Saturday 4<sup>th</sup> October 2025



SEPTEMBER				
1 <sup>st</sup>	Monday - Friday 9.30 – 5pm	Office hours & entries open.		
14 <sup>th</sup>	Sunday 12 midnight	Bulk school entries close.		
19 <sup>th</sup>	Friday 5:00pm	Bulk School Exhibits to be into office with tags on. This includes individual entries in Handwriting.		
21 <sup>st</sup>	Sunday 12 midnight	All general entries close except Horticulture. <b>Entries Close</b> Yard Dog.		
25 <sup>th</sup>	Thursday 5pm	Photographic Exhibits to be into office.		
26 <sup>th</sup>	Friday	Public Holiday Office Closed.		
28 <sup>th</sup>	Sunday 12 midnight	<b>Entries Close</b> Beef Hoof & Hook.		
30 <sup>th</sup>	Tuesday 9:30am - 4.30pm	Last day to pre-deliver exhibits to the show office.		
OCTOBER				
1 <sup>st</sup>	Wednesday 12 mid-day	Horticulture Entries Close		
	Wednesday 4:30pm – 6pm	Centenary & Stadium Pavilions open for exhibit delivery. Entry tags <b>must</b> be attached to exhibit. All <b>Patchwork</b> to be delivered to Stadium Pavilion.		
2 <sup>nd</sup>	Thursday 7.30am – 10am	Pavilion open for exhibit delivery. Entry tags <b>must</b> be attached.		
3 <sup>rd</sup>	Friday 9am - 9pm	<b>SWAN HILL SHOW DAY</b>		
	Friday 1pm	Yard Dogs on Tyntynder Oval.		
	Friday night - 9pm	Fireworks		
4 <sup>h</sup>	Saturday 9am – 5.30pm	<b>SWAN HILL SHOW DAY</b>		
	Saturday 9am	Yard Dogs on Tyntynder Oval.		
	Saturday before 11am Saturday before 1pm	Tiny Tots entries due before Judging commences. Pre-Teens entries due before Judging commences.		
	Saturday 4pm – 5pm Saturday 4pm – 6pm	Pavilion closes to prepare for exhibit collection. Winners can collect prize money after 4pm. Pavilion Exhibitors collect entries, cash prize collection closes 6pm.		
7 <sup>th</sup>	Tuesday	Non-perishable & Photography exhibits and prize money may be collected from the Show Office.		
12 <sup>th</sup>	Sunday	Beef Hoof & Hook Competition.		
17 <sup>th</sup>	Friday 9:30am-5:30pm	Last day to collect exhibits or prize money from the Show Office.		
SCHEDULE CONTENTS				
SECTION		PAGE	SECTION	PAGE
Presidents Message		2	PAVILIONS continued	
Important Dates and Contents		3	CWA - Open & Junior	26 - 27
How to enter exhibits		4	Farmyard Produce - Open	27
General Information for exhibitors		4	Farmyard Produce - Junior	28 - 29
ANIMALS			Floral Art - Open & Junior	6 - 8
Beef Hoof & Hook		35	Handwriting	31 - 32
Yard Dogs		4	Horticulture	8 - 10
Horses have their own schedule			Jams & Preserves	10 - 11
Poultry, Pigeons & Caged Birds have their own schedule			Handcrafts & Hobbies - Open	19 - 22
PAVILIONS			Handcrafts & Hobbies - Junior	22 -24
Art - Open		29	Patchwork – Open	25 - 26
Art - Junior		30 - 31	Patchwork - Junior	26
Agricultural Produce		27-28	Photography - Open	32 - 33
Building Blocks		24	Photography - Junior	33 - 35
Cookery - Open		11 - 14	Scrapbooking & Card Making	22
Cookery - Junior		14 – 17	Tiny Tots & Pre - Teens	6
Craft Seniors, Assisted Living & Special Needs		22	Woodwork	24
Crochet & Knitting		18 - 19	Wool	5



Swan Hill District Agricultural & Pastoral Society Inc.

# WHITFIELD EXCAVATIONS SWAN HILL SHOW

Friday 3<sup>rd</sup> & Saturday 4<sup>th</sup> October 2025



## HOW TO ENTER EXHIBITS

- Entries are to be made through Showday Online using our website [www.swanhillshow.com.au](http://www.swanhillshow.com.au) - select 'Competition Schedules' blue tab to view the classes. Or use this schedule.
- Go to the Show Home tab at [www.swanhillshow.com.au](http://www.swanhillshow.com.au) select 'Place an Entry' green tab link on the web page this will take you to Showday Online.
- Go to the Login/Register icon at the top right of page.
- Create a profile – name, address, contact details etc. You don't need to fill in any banking information.
- Use the PLACE AN ENTRY tab to do 'individual' (you and your family). Then tick 'add a new' when moving onto a new family member.
- For groups and school etc. see the following link for [https://youtu.be/cRLuDGt\\_k50](https://youtu.be/cRLuDGt_k50)
- Select your name or add another person using + ADD NEW and fill in details.
- Having selected who the entrant is, go on to SELECT CLASSES drop down box and select the pavilion/Indoor/Display
- Select Classes then choose Select to get to sections.
- Choose the section you want to enter. And then class.
- Next go to bottom of page and select ADD ANOTHER ENTRY.
- When you have made all your entries select Finish Adding Classes. Select payment option.
- Follow the emails that you get to print exhibit cards etc. or we can do them at the office if necessary.
- Please contact the office if you have any questions, need assistance or don't have access to a computer.

## GENERAL INFORMATION FOR EXHIBITORS

1. Exhibits are the actual article that you have made or grown which need to be presented for judging. You enter your exhibit into classes in the schedule, these are your entries which need to be placed via Showday Online.
2. Carefully read rules and instructions relating to your particular section to ensure your entries are correctly entered and exhibits are delivered by the correct date.
3. Professionals are not eligible to compete, which is defined as someone that works professionally or derives the greater percentage of their income in that craft, art form or technique.
4. When entering animals, provide all details requested on the entry form and sign all appropriate waiver forms.
5. Late entries will NOT be accepted.
6. Exhibit Tags MUST be attached to the Exhibit before delivery / benching.
7. Exhibits due EARLY are Handwriting, Photography and Schools – please refer to section notes. These exhibits need to be delivered to the show office.
8. Horticulture Sections allow entries until 12pm on Wednesday 1<sup>st</sup> October, and must be benching in the Stadium

Pavilion by 10am on Thursday 2<sup>nd</sup> October.

9. DELIVERY OF NON-PERISHABLE EXHIBITS: can be delivered to the Show Office after Monday 15<sup>th</sup> September or directly to the Pavilions between 4.30pm-6.00pm Wednesday 1<sup>st</sup> October and 7.30-10am Thursday 2<sup>nd</sup> October. Please deliver exhibits as early as possible to allow stewards time to organize the pavilion.

10. ALL EXHIBITS MUST be benching by 10am Thursday 2<sup>nd</sup> October.

11. COLLECTION PRIZES & EXHIBITS: Pavilions close 4pm & re-open 5pm Saturday 4<sup>th</sup> October for exhibitors to collect exhibits. Prize money can be collected from 5pm in the Centenary Pavilion. Photography and school entries available for collection from the Show Office as from Tuesday 7<sup>th</sup> October. Perishable exhibits not collected by 6pm Saturday 4<sup>th</sup> October will be discarded. Non-perishable exhibits not collected by 6pm Saturday 4<sup>th</sup> October, may be collected from the Show Office between Tuesday 7<sup>th</sup> – Friday 17<sup>th</sup> October.

12. Prize Money may be collected from the Show Office between Tuesday 7<sup>th</sup> – Friday 17<sup>th</sup> October.

13. No exhibit shall be received without an entry and full payment being made by the closing date.

14. The Secretary shall have the power to extend the date of entry in any section.

15. Exhibits must have Exhibit Tags attached when presented. Except animal sections.

16. The Committee of the Society reserves the right of refusing or cancelling any entry without giving reasons for so doing.

17. Unless otherwise specified, all exhibits other than arena competitions must on the day of entry be the property of the exhibitor.

18. The same exhibit cannot enter or compete in two sections except where specially permitted.

19. The committee reserves the right to adjudicate on any questionable entry, or any matter not provided for in the general conditions and regulations of the Society.

20. In case of adverse weather, or any cause whatsoever, the committee reserves the right to vary, alter or amend any competition, display or arena event, or postpone any same to another date should same be considered essential.

21. All entries must be delivered to and removed from the Society's grounds at the expense of the exhibitor.

22. Exhibitors or their agents must (if required) point out to the steward their respective exhibits in order that they may be identified and classified, before being submitted to the judges.

23. Exhibitors shall arrange their exhibits under the direction of the Stewards, or the Chief Steward, no exhibit afterwards shall be moved without the sanction of the Chief Steward under a penalty not exceeding \$50 or the forfeiting of prize money.

24. The Committee shall have the power to retain the exhibit until such fine is paid.

25. When the judge(s) considers an exhibit in any class to not be of enough merit to deserve a prize, no prize will be





Swan Hill District Agricultural & Pastoral Society Inc.

# WHITFIELD EXCAVATIONS SWAN HILL SHOW

Friday 3<sup>rd</sup> & Saturday 4<sup>th</sup> October 2025



awarded. Judges may award a second or third prize if they consider the exhibit not worthy of a first prize.

26. Should a judge have any reason to doubt the age of any animal, they shall refer to the stewards, who shall make enquiries and secure proof of age before the award is made.

27. The committee may withhold any prizes when statements regarding the exhibits are proved to be erroneous, or when an exhibit has not been in accordance with the regulations, and the exhibitor or exhibitors found guilty of false entries or statements shall be liable to be barred from again competing.

28. All perpetual trophies shall be awarded under the following conditions: The winner's name shall be inscribed on the trophy which is retained by the society unless special permission is obtained from the Secretary.

29. Any prize left unclaimed for longer than 14 days shall be forfeited and cancelled by the Society.

30. Should there be any reason to suspect an exhibit is either diseased or dangerous, the Society reserves the right of refusing admittance to or removing the same from the grounds at the expense of the exhibitor.

31. Exhibits must remain throughout the whole of the show unless permission is received in writing from the society.

32. Exhibits of machinery must be securely guarded as to be safe to every person. The Society shall not be liable for damages because of any accident or contravention of this rule.

33. Any protest against any exhibit or the judge's decision must be made in writing and lodged with the Secretary within 3 hours of judging. The sum of \$50 must accompany the protest, and this shall be forfeited and become the property of the Society, if, in the opinion of the Committee, the protest is frivolous.

34. Where there is no competition in any class or section, no cash prizes may be awarded unless the judge certifies special merit.

35. Any competitor in arena and horse sections putting their animals in an unauthorized stall will be liable for disqualification by the stewards.

36. Competitors in all sections (including Arena) will compete at their own responsibility and risk.

37. Entry fees paid will not be refunded under any circumstances.

38. Any person who is in arrears regarding entry fees, subscriptions, or any other Show charge is ineligible to compete at any Show held by or affiliated with VAS Ltd. Proof of payment will be required before any restriction is lifted.

**Nutrien**  
Ag Solutions™

## YARD DOGS

**Chief Steward:** Noel Templeton 0428 353 225

For any enquiries regarding eligibility please contact Noel.

**Entries Open:** 1<sup>st</sup> September

**Entries Close:** 21<sup>st</sup> September

**Venue:** Tyntynder Oval (North side of the main oval)

We encourage you to enter on Showday Online through our website [www.swanhillshow.com.au](http://www.swanhillshow.com.au)

Affiliated with the Victorian Yard Dog Assoc. Inc. Trial will be conducted under Victorian Yard Dog Assoc. Rules.

**Program to commence:** After lunch Friday 3<sup>rd</sup> October with events 20, 21 & 22, entrants will be advised of starting time. On Saturday 4<sup>th</sup> of October events 23 & 24 will be conducted, starting at 9am.

**Entries:** If you are unable to enter online, please use the manual form to enter, make Direct Debit payment & email Form to:

Email: [secretary@swanhillshow.com.au](mailto:secretary@swanhillshow.com.au) Website: [www.swanhillshow.com.au](http://www.swanhillshow.com.au)

**All entry fees** to accompany nomination or a dog will not be included in the draw. Trial affiliated with the V.Y.U.F.D.A and conducted under those rules. Entries may be limited and/or dogs may be balloted.

**Note:** Prize money awarded will be under the Exhibitor's name, the one who signed the entry form. Please read the disclosure statement on reverse side, if you are not willing to accept the Societies conditions of entry we cannot accept your entry.

All competitors except for the Local Class, will need to be financial members of the Victorian Yard, Utility Farm Dog Association Inc, Membership forms can be found on the website [www.vyufda-inc.com/home](http://www.vyufda-inc.com/home)

- **Class 20 Improver Trial**  
**Entry Fee:** \$14 - Competition Friday  
**Sponsor:** Growers Services Swan Hill  
**Prizes:** 1<sup>st</sup> Sash & \$160, 2<sup>nd</sup> Sash & \$120, 3<sup>rd</sup> Sash & \$50, 4<sup>th</sup> Sash
- **Class 21 Open Trial**  
**Entry Fee:** \$17 - Competition Friday  
**Sponsor:** Commonwealth Bank  
**Prizes:** 1st Sash & \$320, 2nd Sash & \$270, 3rd Sash & \$170, 4th Sash & \$120, 5th Sash, 6th Sash
- **Class 22 Local Trial**  
**Entry Fee:** \$11 - Competition Friday  
Competitors do not have to be members of the VYUFDA.  
**Sponsor:** Noel Templeton  
**Prizes:** 1st Sash & \$100, 2nd Sash & \$75, 3rd Sash & \$25
- **Class 23 Encouragement Trial**  
**Entry Fee:** \$11 - Competition Saturday  
**Sponsor:** Shanadan's Whites  
**Prizes:** 1st Sash & \$100, 2nd Sash & \$75, 3rd Sash & \$50, 4th Sash.





Swan Hill District Agricultural & Pastoral Society Inc.

# WHITFIELD EXCAVATIONS SWAN HILL SHOW

Friday 3<sup>rd</sup> & Saturday 4<sup>th</sup> October 2025



- **Class 24 Novice Trial**  
**Entry Fee: \$11** - Competition Saturday  
**Sponsors:** Swan Hill & Manangatang Nutrien Ag Solutions  
**Prizes:** 1st Sash, \$100 gift voucher & \$140, 2nd Sash, \$100 gift voucher & \$110, 3rd Sash, \$100 gift voucher & \$90, 4th Sash.

## WOOL

**Senior Steward:** Carl Fox 0429 855 260  
**Stewards:** Peter Pryor & Tony Fox  
**Entry Fee:** \$2.20  
**Entries Close:** Sunday 21<sup>st</sup> September  
**Exhibits Due:** 4.30pm - 6pm Wednesday 1<sup>st</sup> October at Centenary Pavilion or 7.30am - 10am, Thursday 2<sup>nd</sup> October, **STRICTLY NO LATE ENTRIES**  
**Prizes:** 1<sup>st</sup> Sash & Certificate & \$6, 2<sup>nd</sup> Sash & Certificate & \$3, 3: Sash & Certificate  
**Read Notice to Exhibitors and Rules & Regulations in conjunction with the following Section Rules:**

- Entrants are encouraged to stage their entries on Wednesday afternoon where possible.
- Fleece must not be over 12 months growth and must be the property of the exhibitor.
- Third prize is only awarded if there are 7 entries or more in the class.
- The Committee of the Swan Hill District A & P Society would like to thank our sponsors, donors and assistants for their valued support.

## MERINO CLASSES

- **Class 100** Merino, fine, skirted
- **Class 101** Merino, medium, skirted
- **Class 102** Merino, strong, skirted
- **Class 103** Merino Rams Fleece, skirted
- **Class 104** Lamb's Wool, first shearing
- **Class 105** Doug Lay Memorial Award - 3 Merino Fleeces either fine, medium, or strong skirted.  
**Prizes:** 1: Sash & Certificate & \$100; 2: Sash & Certificate & \$50; 3: Sash & Certificate

## GENERAL CLASSES

- **Class 110** Shedded Sheep Fleece
- **Class 111** Comeback, skirted
- **Class 112** Crossbred, fine, skirted
- **Class 113** Crossbred, medium, skirted
- **Class 114** Crossbred, strong, skirted
- **Class 115** Crossbred Lambs first shearing
- **Class 116** Coloured Sheep Wool
- **Class 117** Fleece - any other type
- **Class 118** Alpaca Fleece, Display only

**CHAMPION FLEECE OF THE SHOW**  
**NORTHERN WOOL PTY LTD**  
Based on highest point score.  
**Sponsor:** Northern Wool Pty Ltd  
**Prizes:** 1: Sash & \$150

## TINY TOTS & PRE-TEENS

**Steward:** Sharon Rogers 0429 794 136  
**Entry Fee:** \$1.10  
**Prizes:** 1<sup>st</sup> Sash & prize, 2<sup>nd</sup> Sash & prize, 3<sup>rd</sup> Sash and prize.  
**Held on Saturday 4th October:** Entries can be registered on the day at the venue Swan Hill Football Clubrooms.  
**Winners** will be announced on the Entertainment Stage, near the Food Court, at 3.30pm.  
**Entry Forms:** Will be available at the venue and must be completed and signed by parent/guardian.  
Before 11am - Pre -Tiny Tots & Tiny Tots – Cassettes 1-6  
Before 1pm - Miss Junior Showgirl/Miss Pre-Teens – Classes 7-10  
**Sponsors:** Aqua Fitness, Aspire Jewellery, Collins Booksellers, Dot Brasser, Clarke's Gift Salon, Shirley Hall, The Rustic Ivy, Mary Heap, Mint Soda, Perfect Fit, The Little Show Shop, Jan Murphy, Jan Sinclair, Peg's Shed.  
**Judging Miss Pre-Tiny Tots:** Commences at 11am, beginning with Miss Pre-Tiny Tot 1 year.  
**Judging Miss Junior Showgirl/Miss Pre-Teens:** Commences at 1pm, beginning with Miss Junior Showgirl 5 & 6 years  
Each class will be judged immediately following the completion of the previous class.  
No district restrictions.  
Dress: 'Suitable for a Country Show' Note: No party dresses

- **Class 1** Miss Pre-Tiny Tot 1 year
- **Class 2** Mr Pre-Tiny Tot 1 year
- **Class 3** Miss Pre-Tiny Tot 2 years
- **Class 4** Mr Pre-Tiny Tot 2 years
- **Class 5** Miss Tiny Tot 3 & 4 years
- **Class 6** Mr Tiny Tot 3, 4 & 5 years
- **Class 7** Miss Junior Showgirl 5 & 6 years
- **Class 8** Mr Junior 6, 7 & 8 years
- **Class 9** Miss Midi Showgirl 7, 8 & 9 years
- **Class 10** Miss Pre-Teen 10, 11 & 12 years

## STADIUM & LEISURE CENTRE PAVILIONS

### PAVILION SECTION AWARDS

#### PAVILION EXHIBITOR AGGREGATE

Award for overall Most Successful Exhibitor in Pavilions.

**Sponsor:** Shirley Hall & Family

Aggregate Certificate & Prize

Sections included: Cookery, Floral Art, Handcrafts & Hobbies, Crochet & Knitting, Horticulture, Jams & Preserves.

#### JUNIOR PAVILION AGGREGATE

Award for overall Most Successful Junior Exhibitor in Pavilions.

**Sponsor:** Ann-Louise Crowe

Aggregate Certificate & \$20

Sections included: Cookery, Floral Art, Handcrafts & Hobbies, Photography, Patchwork, Farmyard Produce, Handwriting & Art.



Swan Hill District Agricultural & Pastoral Society Inc.

# WHITFIELD EXCAVATIONS SWAN HILL SHOW

Friday 3<sup>rd</sup> & Saturday 4<sup>th</sup> October 2025



## FLORAL ART

**Head Steward:** Elizabeth Kaylock 0428 340 527

**Fee:** \$1.10

**Prizes:** 1<sup>st</sup> Certificate & \$2, 2<sup>nd</sup> Certificate & \$1, 3<sup>rd</sup> Certificate

**Entries Close:** Sunday 21<sup>st</sup> September 12am

**Exhibits Due:** 4.30pm - 6pm Wednesday 1<sup>st</sup> October at Centenary Pavilion or 7.30am - 10am, Thursday 2<sup>nd</sup> October.

**STRICTLY NO LATE ENTRIES.**

**Read Notice to Exhibitors, Rules & Regulations in conjunction with the following Section Rules:**

- **Staging Entries:** Entrants are encouraged to stage their entries on Wednesday afternoon where possible.
- **Exhibitors** - shall place their exhibits on the bench, under the direction of the steward, no exhibit shall be moved thereafter.
- **Pavilion Closes** - at 4pm Saturday.
- **Exhibits** - can be collected between 5pm- 6pm Saturday. Perishables will be disposed of if not collected by 6pm.
- **Space allowed** - 75cm, design should use no more than two thirds of space.
- **No artificial flowers permitted** - unless stated.
- **Painted materials** - Limited painted materials are allowed, however horticultural material must predominate.
- **Container** - Any shaped vessel which contains water, unless otherwise specified.
- **Pave** - Shallow container, any shape, oasis or sand maybe used. Materials to be grouped closely together to form a pattern without spaces. It can include flowers, stones, seeds, berries, pods, any natural material etc.

## OPEN

- **Class 200** Minimum Material Maximum Impact
- **Class 201** Submerged - An underwater design. Some materials may be out of water.
- **Class 202** Split Level Design  
A design using two containers of different heights.  
Please note: This section will be exhibited on a cream background which will be provided.
- **Class 203** Natural Beauty - To include Bark
- **Class 204** Pave Design
- **Class 205** Arrangement Incorporating Cane, Bamboo etc

### BEST EXHIBIT OPEN FLORAL ART

Sponsor: Francis Florist - Certificate & \$30

## INTERMEDIATE

A person who has won no more than three (3) first prize awards in the Intermediate section at this or any other show.

- **Class 210** Minimum Material Maximum Impact
- **Class 211** Submerged - An underwater design. Some materials may be out of water.
- **Class 212** Split Level Design -  
A design using two containers of different heights.
- **Class 213** Natural Beauty - To include Bark
- **Class 214** Pave Design
- **Class 215** Arrangement Incorporating Cane, Bamboo etc

### BEST EXHIBIT INTERMEDIATE FLORAL ART

Sponsor: Aspire Jewellery - Certificate & \$30

## NOVICE

A person learning floral art for less than two years.

- **Class 220** In the Pink
- **Class 221** Native Delight - Design using Australian/South African flowers.
- **Class 222** Design in Novelty Container
- **Class 223** Floating Bowl Arrangement
- **Class 224** Wreath - Using silk, artificial or dried materials. Bling may be added e.g., baubles, glitter etc. Maximum 40cm diameter.

### BEST EXHIBIT NOVICE FLORAL ART

Sponsor: The Rustic Ivy - Certificate & \$20 Voucher

## SPECIAL NEEDS

Open to adults with special needs only.

- **Class 230** Design in a Teapot
- **Class 231** Floating Bowl Arrangement -  
Candles may be used.
- **Class 232** Small Posy of Fresh Flowers -  
To be in vase or container. Design not to exceed 35cm in height.
- **Class 233** Wreath - Using silk, artificial or dried materials. Bling may be added e.g., baubles, glitter etc. Maximum 40cm diameter.

### BEST EXHIBIT FLORAL ART SPECIAL NEEDS

Sponsor: Swan Hill Innerwheel - Certificate & \$10

### AGGREGATE IN FLORAL ART

Dorothy Cox Memorial 'Most Successful Exhibitor'  
Aggregate Certificate & \$30

## JUNIOR FLORAL ART

**Head Steward:** Elizabeth Kaylock 0428 340 527

**Fee:** \$0.55

**Prizes:** 1<sup>st</sup> Certificate & \$2, 2<sup>nd</sup> Certificate & \$1, 3<sup>rd</sup> Certificate

**Entries Close:** Sunday 21<sup>st</sup> September 12am

**Exhibits Due:** 4.30pm - 6pm Wednesday 2<sup>nd</sup> October at Leisure Centre or 7.30am - 10am, Thursday 3<sup>rd</sup> October,

**STRICTLY NO LATE ENTRIES**

**Read Notice to Exhibitors, Rules & Regulations in conjunction with the following Section Rules:**

- **Open to juniors** - aged 18yrs & under on the day of show
- **Staging Entries** - Entrants are encouraged to stage their entries on Wednesday afternoon where possible.
- **Pavilion Closes** - at 4pm Saturday.
- **Exhibits** - can be collected between 5pm- 6pm Saturday. Perishables will be disposed of if not collected by 6pm.
- **No artificial flowers permitted** - unless stated.
- **Painted materials** - Limited painted materials are allowed, however horticultural material must predominate.
- **Space allowed** - 75cm, design should use no more than two thirds of space.
- **Exhibitors** - shall place their exhibits on the bench, under the direction of the steward, and no exhibit shall be moved thereafter.



Swan Hill District Agricultural & Pastoral Society Inc.

# WHITFIELD EXCAVATIONS SWAN HILL SHOW

Friday 3<sup>rd</sup> & Saturday 4<sup>th</sup> October 2025



- **Container** - Any shaped vessel which contains water, unless otherwise specified.

## Definitions:

**Floral Saucer:** Blooms should be small, placed on damp sand; the edge of saucer should be concealed with leaves or petals and blooms should form a pattern with colours blending and with no sand visible.

**Decorated Saucer:** this should be similar to Floral Saucer but should incorporate an accessory into the design, this could include seeds or other natural material.

**Necklace:** must be threaded on cotton, fishing line or wire and may be presented on card or in a shallow box.

**Creature:** to be joined with horticultural materials, for example, toothpicks.

**Cup & Saucer Arrangement:** if cup and saucer have a floral design, the flower arrangement inside needs to match.

## 18 YEARS & UNDER

- **Class 240** Design using 3 flowers  
To include fresh flowers & foliage. Candles optional.
- **Class 241** Red Table Centre  
To include foliage and may incorporate bark, wood, branch or stump
- **Class 242** Wreath - Using silk, artificial or dried materials.  
Bling may be added e.g., baubles, glitter etc.  
Maximum 40cm diameter.
- **Class 243** Pave Design  
See definitions at beginning of floral art section.
- **Class 244** Creative Beauty  
Arrangement using bark, flowers & foliage.

### BEST EXHIBIT FLORAL ART 18 YEARS & UNDER

Sponsor: Elizabeth Kaylock - Certificate & \$10

## 15 YEARS & UNDER

- **Class 250** In the Pink  
Table center using fresh materials, candles may be used.
- **Class 251** Creative Beauty  
Design to incorporate 3 flowers. May include bark, wood, branch, stump etc.
- **Class 252** Beauty with Succulents & Flowers
- **Class 253** Miniature Garden - Garden not to exceed 35cm.
- **Class 254** Wreath - Using silk, artificial or dried materials.  
Bling may be added e.g., baubles, glitter etc.  
Maximum 40cm diameter.

### BEST EXHIBIT JUNIOR FLORAL ART 15 YRS & UNDER

Sponsor: Pauline Jardine - Certificate & \$10

## 12 YEARS & UNDER

- **Class 260** Floral Saucer  
Edges are to be covered, incorporating a creative pattern.  
See section notes.
- **Class 261** Decorated Saucer  
Edges are to be covered, incorporating an accessory e.g. ornament or figurine. See section notes.
- **Class 262** Novelty Creature

Creatures to be made from fruit and/or vegetables must be presented on thick card plate.

- **Class 263** Miniature Garden - garden not to exceed 35cm.
- **Class 264** Novelty Container of Flowers  
e.g. boot, teapot etc.

### BEST EXHIBIT JUNIOR FLORAL ART 12 YRS & UNDER

Sponsor: Elizabeth Kaylock - Certificate & \$10

## 9 YEARS & UNDER

- **Class 270** Floral Saucer  
Edges are to be covered, incorporating a creative pattern.  
See section notes.
- **Class 271** Decorated Saucer  
Edges are to be covered, incorporating an accessory e.g. ornament or figurine. See section notes.
- **Class 272** Necklace - May use flowers, berries, seed pods etc. Must be threaded on cotton, fishing line or wire, see section notes.
- **Class 273** Novelty Creature  
Creatures to be made from fruit and/or vegetables, must be presented on thick card plate. Toothpicks can be used.
- **Class 274** Miniature Garden  
Container size no larger than 35cm.
- **Class 275** Artificial Flower Arrangement  
Exhibit using only artificial flowers and foliage, may use baubles, beads etc. Design not to exceed 35cm in height.

### BEST EXHIBIT JUNIOR FLORAL ART 9 YRS & UNDER

Sponsor: Jeannie Finlayson - Certificate & \$10

## 6 YEARS & UNDER

- **Class 280** Decorated Saucer  
Edges are to be covered, incorporating an accessory e.g. ornament or figurine. See section notes.
- **Class 281** Arrangement of fresh flowers in a vase
- **Class 282** Novelty Creature  
Creatures to be made from fruit and/or vegetables, must be presented on thick card plate.
- **Class 283** Decorated Card  
Glue dried plant material to card.
- **Class 284** The Longest Gum Leaf  
Exhibit must be a fresh specimen.
- **Class 285** Necklace  
May use flowers, berries, seed pods etc. Must be threaded on cotton, fishing line or wire see, section notes.

### BEST EXHIBIT JUNIOR FLORAL ART 6 YRS & UNDER

Sponsor: Jeannie Finlayson - Certificate & \$10

## SPECIAL NEEDS JUNIOR

Open to children with special needs 18yrs & under, who work with a teacher aid.

- **Class 290** Flowers in a Mug
- **Class 291** Miniature Garden  
Container size no larger than 35cm.





Swan Hill District Agricultural & Pastoral Society Inc.

# WHITFIELD EXCAVATIONS SWAN HILL SHOW

Friday 3<sup>rd</sup> & Saturday 4<sup>th</sup> October 2025



- **Class 292** The Longest Gum Leaf  
Exhibit must be a fresh specimen.
- **Class 293** Decorated Card  
Glue dried plant material to card.
- **Class 294** Decorated Star

## BEST EXHIBIT JUNIOR FLORAL ART SPECIAL NEEDS

Sponsor: Lorraine Meier - Certificate & \$10

## BEST OVERALL EXHIBIT JUNIOR FLORAL ART

Sponsor: Francis the Florist - Certificate & \$20

## HORTICULTURE

**Head Steward:** Laurel Parsons 0407 875 856

**Entry Fee:** \$1.10

1<sup>st</sup> Certificate & \$2, 2<sup>nd</sup> Certificate & \$1, 3<sup>rd</sup> Certificate

**Entries Close:** Wednesday 1<sup>st</sup> October 12pm

**Exhibits Due:** 4.30pm - 6pm Wednesday 1<sup>st</sup> October at Centenary Pavilion or 7.30am - 10am, Thursday 2<sup>nd</sup> October. **STRICTLY NO LATE ENTRIES**

### Read Notice to Exhibitors and Rules & Regulations in conjunction with the following Section Rules:

- Entrants are encouraged to stage their entries on Wednesday afternoon where possible.
- Please note pavilions close at 4pm Saturday. Exhibits to be collected between 5pm- 6pm, or may be collected from the office the week following the show.
- Perishables not collected by 6pm will be disposed of.
- All entries must be from exhibitor's own garden
- Exhibits may be displayed in own container or in bottles supplied
- Paper or foam etc may be used to stage the exhibits but must not protrude above the container

### Definitions:

- **Container:** any shaped vessel which contains water. A container unless specified otherwise must contain a minimum of three stems to be counted at the top of the container.
- **Vase:** is a vessel of which its height is greater than its width
- **Stem:** must exit from bottles according to schedule e.g. one stem, means that only one stem can protrude from the bottle, all other branches must be well above the top of container.
- **Spike:** elongated axis usually unbranched bearing stalked or stalkless flowers as in cymbidium, foxglove, gladiolus or hollyhock.
- **Truss:** cluster of flowers as in agapanthus.
- **Kinds:** used in classification of plants, flowers, fruit etc. eg daffodils & roses are kinds of flowers.
- **Varieties:** a term recommended for show purposes for all varieties within a "kind" eg 'Golden Bunny' & 'Crimson Glory' are "varieties" of rose; 'Granny Smith' & 'Delicious' are "varieties" of apples.

## POTTED PLANTS

Maximum size of container is to be clean 30cm unless otherwise stated

- **Class 300** Maiden Hair Fern
- **Class 301** Indoor Foliage Plant - not fern, cactus or succulent.
- **Class 302** Fern - any other variety, not Maiden Hair Fern.
- **Class 303** Potted Herb Garden - At least 3 varieties.
- **Class 304** Pot Plant in Flower - Not Azalea or Orchid.
- **Class 305** Azalea
- **Class 306** Cyclamen
- **Class 307** Hanging Pot Plant - With 1 draping/trailing plant variety.
- **Class 308** Potted Cactus/Succulent - 1 variety.
- **Class 309** Cactus/Succulent Garden - At least 4 varieties. Maximum size 25 x 25cm.
- **Class 310** Native Orchid - In bloom.
- **Class 311** Cymbidium Orchid - In bloom.
- **Class 312** Orchid - any other variety, in bloom.

### BEST EXHIBIT POTTED PLANTS

Sponsor: The Rustic Ivy  
Certificate & Voucher \$20

## CUT FLOWERS - Not Natives

Container exhibits generally have 4-6 stems permitted, unless otherwise specified.

- **Class 315** Zonal Pelargonium (Geranium) - 3 stems, 3 colours. Single.
- **Class 316** Zonal Pelargoniums (Geraniums) - 3 stems, 3 colours. Double.
- **Class 317** Ivy Geranium - 3 stems, 3 colours.
- **Class 318** Geraniums - 3 varieties, 3 stems, 3 colours.
- **Class 319** Variegated Geranium Leaves - 3 stems, 3 colours, no buds, staged singly.
- **Class 320** Ranunculus - 6 stems, 3 or more distinct colours.
- **Class 321** Marguerites - 6 stems.
- **Class 322** Gerberas - 3 stems.
- **Class 323** Camellias - 3 stems.
- **Class 324** Sweet Peas - 6 stems.
- **Class 325** Regal Pelargonium - 3 stems, 3 colours.
- **Class 326** Pansies - 4 blooms, 4 colours.
- **Class 327** Container of Alstroemerias
- **Class 328** One Container of Flowers - 3-6 cuts.
- **Class 329** Container of Flowers - 1 variety, bulb, tuber or corm.
- **Class 331** Three Blooms - 1 colour, 1 variety not scheduled.
- **Class 332** Four Blooms - 1 variety not scheduled.
- **Class 333** Four Blooms - 4 varieties, most perfect match in colour.
- **Class 334** Bearded Iris - 3 stems.
- **Class 335** Iris - not Bearded - 3 stems.

### BEST EXHIBIT CUT FLOWERS

Sponsor: Swan Hill & District Garden Club  
Certificate & \$20



Swan Hill District Agricultural & Pastoral Society Inc.

# WHITFIELD EXCAVATIONS SWAN HILL SHOW

Friday 3<sup>rd</sup> & Saturday 4<sup>th</sup> October 2025



## TREES & SHRUBS

Not Australian Natives.

- **Class 340** Lilac - 1 cut.
- **Class 341** Container of flowering shrubs - Containing at least 3 kinds.

### BEST EXHIBIT TREES & SHRUBS

Sponsor - Horticulture Stewards  
Certificate & \$20

## AUSTRALIAN NATIVES

- **Class 345** Australian Natives - 3 cut, 3 kinds
- **Class 346** Bottlebrush - 3 cuts, 1 kind
- **Class 347** Eucalyptus - 1 cut
- **Class 348** Australian Native - 1 cut. Not Eucalyptus.

### BEST AUSTRALIAN NATIVE FLOWER

Sponsor: Francis the Florist  
Certificate & \$20

## SPECIMEN EXHIBITS

Specimen exhibits are to be staged singly with a maximum length of 45cm from the top of container. Containers must be free standing and stable on the bench.

- **Class 352** Bearded Iris, 1 cut
- **Class 353** Orchid, 1 cut
- **Class 354** Banksia Rose, 1 cut
- **Class 355** One Spike - Example - Gladiolus
- **Class 356** One Truss - Example - Agapanthus.
- **Class 357** One Specimen Exhibit, not scheduled

### BEST EXHIBIT SPECIMEN

Sponsor: Rhimahden Nursery  
Certificate & \$20 voucher

## ROSES

- **Class 360** Red Rose, 1 bloom
- **Class 361** Pink Rose, not Peace, 1 bloom
- **Class 362** Peace Rose, 1 bloom
- **Class 363** Rose, any Other Colour, 1 bloom

### BEST EXHIBIT ROSES

Sponsor: Francis the Florist  
Certificate & \$20

### BEST EXHIBIT HORTICULTURE

Sponsor - Rhimahden Nursery  
Certificate & \$30 Voucher

### AGGREGATE IN HORTICULTURE

Sponsor: Rhimahden Nursery  
Certificate & \$50 voucher

## JAMS & BOTTLED PRESERVES

**Head Steward:** Marilyn Chisholm 0421 726 522

**Entry Fee:** \$1.10

**Prizes:** 1<sup>st</sup> Certificate & \$2, 2<sup>nd</sup> Certificate & \$1, 3<sup>rd</sup> Certificate

**Entries Close:** Sunday 21<sup>st</sup> September

**Exhibits Due:** 4.30pm - 6pm Wednesday 1<sup>st</sup> October at Centenary Pavilion or 7.30am - 10am, Thursday 2<sup>nd</sup> October.

**STRICTLY NO LATE ENTRIES**

**Read Notice to Exhibitors and Rules & Regulations in conjunction with the following Section Rules:**

**Pavilion Closes:** Please note pavilions close at 4pm Saturday.

Exhibits can be collected between 5pm- 6pm

**Uncollected Exhibits:** may be collected from the Show Office from the Tuesday following the show for two weeks.

- Entrants are encouraged to stage their entries on Wednesday afternoon where possible.
- All jars/bottles to be clearly labelled, wax or cellophane permitted.
- Lids must be easily removed otherwise they may not be judged.
- Other flavours may be added as long as the named variety predominates.
- Jars/bottles to be of uniform size, maximum size of jar 500gm.
- All jars/bottles to be labelled with variety and date made.
- No advertising to be left on jars/bottles.
- All containers to be glass.

### Hints for Jams & Preserves:

#### Marmalades:

- Peel evenly cut
- Ensure peel thoroughly tender before adding sugar
- Firm consistency
- No crystallisation
- Jars sparkling clean
- Name of product and date on label

#### Jams:

- Fruit nicely diced
- Full flavour of fruit type
- Same rules as above

#### Preserves:

- Nice evenly packed fruit
- No cloudiness in the syrup
- Unmarked fruit
- No staining under lid

#### Differences between Pickles and Pickled:

- Pickles are cooked
- Pickled is to preserve in a brine/ vinegar

## NDAS JAMS & PRESERVES



Winners and second place of these Classes will compete at 2026 Group Final in Swan Hill, Sunday 3<sup>rd</sup> May. Rules for these classes follow.



Swan Hill District Agricultural & Pastoral Society Inc.

# WHITFIELD EXCAVATIONS SWAN HILL SHOW

Friday 3<sup>rd</sup> & Saturday 4<sup>th</sup> October 2025



## • Class 400 NDAS "From My Pantry"

3 Items - Own Choice, eg: Jam, Sauce, Pickles, Jelly, Chutney.  
Each container to be labelled.

Jars/Bottles 250ml – 500ml, cellophane permitted.

Lids must be easily opened

## NDAS Regulations:

1. The entrant must follow the competition specifications provided.
2. Each entry must be the bona fide work of the exhibitor.
3. Open to competitors of any age or gender.
4. **Professionals are not eligible**, which is defined as someone that works professionally or derives the greater percentage of their income in that craft, art form or technique.
5. An exhibitor having won **first or second** at their local Show will make another entry for the 2026 Group Final.
6. If competing at multiple shows you can only represent one show at the group finals in the respective section that you were either first or second placegetter which must be the first show within the Show season that you entered.
7. A new collection of same recipes to be used for Regional Finals. (The jars from this class have already been opened and judged therefore will not be suitable).

## NOVICE CLASSES

Open to all exhibitors who have never won first prize at this or any other show.

- **Class 410** Jar of Jam
- **Class 411** Jar of Relish or Chutney

### BEST EXHIBIT NOVICE JAMS & PRESERVES

Sponsor: Ross & Liz Cox  
Certificate & \$20

## OPEN CLASSES

Professionals are not eligible to compete see item 3 page 3.

- **Class 420** Apricot Jam
- **Class 421** Fig Jam
- **Class 422** Plum Jam
- **Class 423** Strawberry Jam
- **Class 424** Jam, Any Other Variety
- **Class 425** Orange Marmalade
- **Class 426** Lemon Marmalade
- **Class 427** Grapefruit Marmalade
- **Class 428** Marmalade using food processor
- **Class 429** Marmalade - Any Other Variety
- **Class 430** Small jar of Candied Peel
- **Class 431** Lemon Butter
- **Class 432** Quince Jelly
- **Class 433** Apple Jelly
- **Class 434** Jar of Jelly, any other variety
- **Class 435** Tomato Sauce
- **Class 436** Plum Sauce
- **Class 437** Sauce, any other variety - Must be labelled with variety.

- **Class 438** Relish, any variety - Must be labelled with variety.
- **Class 439** Chutney, any variety - Must be labelled with variety.
- **Class 440** Pickles, any variety - Must be labelled with variety.
- **Class 441** Jar of Pickled Vegetables - In brine or vinegar, any variety, labelled.
- **Class 442** Bottle of Flavoured Oil/Vinegar
- **Class 443** Honey - Jar to be 300ml - 500ml.
- **Class 444** One Bottle Fruit Cordial - Must be clip sealed.

### BEST EXHIBIT FEATURING STONE FRUIT

Must contain stone fruit. To include Novice Section.  
Sponsor: Sharp Fruit  
Certificate & \$20.00

### BEST EXHIBIT JAMS & PRESERVES

Sponsor: Sharp Fruit  
Certificate & \$20

## ALCOHOL

All bottles MUST be labelled with variety and date made, no advertising on bottles.

- **Class 450** Beer
- **Class 451** Alcoholic Ginger Beer
- **Class 452** Non-Alcoholic Ginger Beer
- **Class 453** Liqueur

### BEST EXHIBIT ALCOHOL

Sponsor: Ann Young  
Certificate & \$25

## COOKERY

**Head Steward:** Jenny Asling 0497 382 077

**Entry Fee:** \$1.10

**Prizes:** 1<sup>st</sup> Certificate & \$2, 2<sup>nd</sup> Certificate & \$1, 3<sup>rd</sup> Certificate

**Entries Close:** Sunday 21<sup>st</sup> September

**Exhibits Due:** 4.30pm - 6pm Wednesday 1<sup>st</sup> October at Centenary Pavilion or 7.30am - 10am, Thursday 2<sup>nd</sup> October,

### STRICTLY NO LATE ENTRIES

- **Pavilion Closes:** Please note pavilions close at 4pm Saturday. Exhibits can be collected between 5pm- 6pm.
- **Uncollected Exhibits:** Perishables not collected by 6pm will be disposed of.

### Read Notice to Exhibitors, Rules & Regulations in conjunction with the following Section Rules:

- Entrants are encouraged to stage their entries on Wednesday afternoon where possible.
- Plates to exhibit entries on are provided by the Society.

### Show Cooking Hints:

**Chocolate Cake:**



Swan Hill District Agricultural & Pastoral Society Inc.

# WHITFIELD EXCAVATIONS SWAN HILL SHOW

Friday 3<sup>rd</sup> & Saturday 4<sup>th</sup> October 2025



- For fine soft mixture, blend cocoa with a little warm water and cool before adding to mixture.
- Add vanilla at the creaming butter and sugar stage. This applies for all butter cake mixtures. This will enable you to get the full flavour and aroma right through the cake.

## Boiled Fruit Cake:

- Fruit well mixed in
- Should have nice shiny surface
- No cracks, no soggy core

## Plain Scones:

- Dainty 5cm round
- Uniform in shape & colourings
- Free from excess flour, particularly base
- Texture light & fluffy when opened

## Plain Patty Cakes, 4cm:

- Moist fine texture
- Peak to rise above paper
- If oven not hot enough they spread rather than rise

## Biscuits:

- Daintiness of size & shape, uniform size
- Where distinct varieties are called for, separate mixtures must be used
- Should be crisp i.e., snap in half cleanly

## Cooked Slices:

- Dainty even shapes
- Do not exhibit the outside crusty pieces
- If weeping, sign of over cooking

## Sponge Sandwich:

- 2 layers of identical thickness & colour
- Must be from the same mixture

## Rich Fruit Cake:

- Add essence with butter and sugar
- Bake at least 3 weeks before exhibiting, allowing cake to get full bloom & aroma
- All fruit & nuts should be a similar size
- Slow oven 130 – 150 degrees

## Rum Balls:

- To get the rum balls an even size, weigh them

## Muffins:

- Muffins must be cooked in paper cases
- Any muffin cooked in a tin & then placed in paper case will be disqualified

## Rack marks on cakes:

- Rack marks should not be seen on cakes. To ensure this place a tea towel on the rack before turning cake onto it.
- Turn the cake over so the bottom is on the tea towel and the top can then cool naturally and without marks.

- **Class 501** VAS Ltd Carrot Cake - Sponsored by Rocky Lamattina & Sons. Use recipe provided at end of this section.

## VAS Ltd. Rules and Regulations:

1. The entrant must follow the recipe and specifications provided below.
2. Each cake entered must be the bona fide work of the exhibitor.
3. **Professionals are not eligible**, which is defined as someone that works professionally or derives the greater percentage of their income in that craft, art form or technique.
4. The **Rich Fruit Cake** competition follows the three levels of competition: Show Level, Group Level and State Level.
5. An exhibitor having won at their local Show will bake another cake for the 2026 Group Final. The winner of the Group Final will bake another cake for the State Final at the 2026 Royal Melbourne Show.
6. The **Carrot Cake** competition follows the three levels of competition: Show Level, Group Level and State Level. An exhibitor having won at their Local Show will bake another Carrot Cake for the 2026 Group Final and then the winner of the Group Final will bake another Carrot Cake for the Annual VAS Ltd. Convention.
7. An exhibitor having won at Show Level is not eligible to enter the VAS rich Fruit Cake or Carrot Cake competition at any other Show until after the Group Final judging.
8. An exhibitor is only eligible to represent one Group in the State Final
9. If for any reason a winner is unable to compete at Group or State Final Level, then the second placegetter is eligible to compete.
10. If an exhibitor is found to have won more than one Group Final the exhibitor must forfeit/refund all prizes and will be disqualified from exhibiting for 12 months.

## State Final prizes:

Fruit Cake 1st: \$300 & VAS State Final Trophy; 2nd: \$150, 3rd: \$50  
Carrot Cake 1st: \$250 & VAS State Final Trophy; 2nd: \$100, 3rd: \$50

## VAS Ltd Rich Fruit Cake

Don't over mix as it creates a dry cake.

## Ingredients - Preferred 100% Australian Grown Produce

- 250g sultanas
- 250g chopped raisins
- 250g currants
- 125g chopped mixed peel
- 90g chopped red glace cherries
- 90g chopped blanched almonds
- 1/3 cup sherry or brandy
- 250g plain flour
- 60g self-raising flour
- 1/4 tsp grated nutmeg
- 1/2 tsp ground ginger

## VAS LTD COOKERY



Winners of these Classes will compete at 2026 Group Final in Swan Hill, Sunday 3<sup>rd</sup> May. Winners at the Group Final will then compete at the 2026 VAS Ltd Finals in Wangaratta Sunday 21<sup>st</sup> June. Rules for these Classes are as follows.

- **Class 500** VAS Ltd Rich Fruit Cake - Use recipe provided at end of this section. Only this recipe to be used



Swan Hill District Agricultural & Pastoral Society Inc.

# WHITFIELD EXCAVATIONS SWAN HILL SHOW

Friday 3<sup>rd</sup> & Saturday 4<sup>th</sup> October 2025



## NDAS COOKERY



Winners and second place of these Classes will compete at 2026 Group Final in Swan Hill, Sunday 3<sup>rd</sup> May. Rules for these classes follow.

- **Class 502** NDAS Anzac Biscuits – 4 - recipe provided.
- **Class 503** NDAS Chocolate Mud Cake - recipe provided.

### All competitors are to ensure that they follow these regulations for NDAS competitions

1. The entrant must follow the specifications provided.
2. Each entry must be the bona fide work of the exhibitor.
3. Open to competitors of any age or gender.
4. Professionals are not eligible, which is defined as someone that works professionally or derives the greater percentage of their income in that craft, art form or technique.
5. An exhibitor having won first or second at their local Show will make another entry for the 2026 Group Final.
6. If competing at multiple shows you can only represent one show at the group finals in the respective section that you were either first or second placegetter which must be the first show within the Show season that you entered.
7. Exhibit to be displayed on a plate supplied by NDAS on the day of the group finals.



### VAS Ltd Carrot Cake

only this recipe to be used

#### Ingredients:

- 375g plain flour
- 2tsp baking powder
- 1 ½ tsp bicarb soda
- 2tsp ground cinnamon
- ½ tsp ground nutmeg
- ½ tsp allspice
- pinch salt
- 345g castor sugar
- 350ml vegetable oil
- 4 eggs
- 3 medium carrots, grated (350g)
- 220g tin crushed pineapple, drained
- 180g pecan nuts, coarsely crushed

#### Method:

1. Preheat the oven to 180C (160C fan), Grease a 23cm (9 inch) round cake tin and line with baking paper.
2. Sift the dry ingredients together into a bowl. In a separate bowl, beat the eggs and oil, then add to the dry ingredients. Mix well then add the carrots, crushed pineapple and pecans. Mix to form a smooth batter and pour into the cake in.
3. Bake for approximately 90-100 min.
4. Remove from the oven and allow to cool for 10 minutes in the tin on a wire rack. Upend and allow to cool on the wire rack.

### NDAS Anzac Biscuits

only this recipe to be used

#### Ingredients:

- 1 cup Quick Oats
- 1 cup Self-Raising Flour
- 1 cup Desiccated Coconut
- 2 tbsp Boiling Water
- 1 cup Sugar
- 125 gm Butter
- 1 tbsp Golden Syrup
- 1 tsp Bicarbonate Soda

#### Method:

1. Mix all the above dry ingredients in bowl, melt together Butter, Golden Syrup, then add Bicarb Soda which has been dissolved in the Boiling Water.
2. Add to dry ingredients and mix well to a firm consistency.
3. Place 17gms of mixture (a tsp full) on well-greased baking tray (or baking paper lined), leaving room to spread.
4. Bake in moderate oven until brown.
5. Cool on tray.

Note – Roll mixture into balls before placing on tray – makes neat round shape biscuits for the show bench.

### NDAS Mud Cake Uniced

only this recipe to be used

#### Ingredients:

- 250g unsalted Butter, roughly chopped
- 1 cup (240g) Castor Sugar
- 200g Milk Chocolate block, roughly chopped
- 1 ½ cups (375ml) Milk
- 1 cup (220g) Brown Sugar, packed
- 3 Eggs (approx. 55g each)
- 1 tbsp (20g) Vanilla Essence or 2 tsp (10g) Vanilla Extract
- 1 ½ cups (225g) Self-Raising Flour
- ½ tsp (2.5g) Salt
- ½ cup (50g) Unsweetened Cocoa Powder



Swan Hill District Agricultural & Pastoral Society Inc.

# WHITFIELD EXCAVATIONS SWAN HILL SHOW

Friday 3<sup>rd</sup> & Saturday 4<sup>th</sup> October 2025



## Method:

1. Preheat the oven to 150C / 300F (fan/convection) or 160C / 320F (standard).
2. Grease and line a 20cm round cake tin (no spring tins to be used). The cake rises very high when baking, so make sure that the baking paper rises at least 6cm above the top of the tin.
3. Place chopped butter and chocolate in a large heat-proof bowl. Microwave for 1 minute on high power. Stir well. Microwave for another 30 seconds.
4. Stir until the chocolate is completely smooth and melted. Microwave in further 10 second bursts, if needed, to completely melt the chocolate.
5. Add sugars. Stir well.
6. Add milk, eggs and vanilla. Stir until well combined.
7. Sift flour, cocoa powder and salt. Stir until the batter is well combined.
8. Pour into the prepared tin.
9. Bake 80-90 minutes or until a skewer inserted in the middle of the cake comes out with only a few moist crumbs clinging to it.
10. Avoid opening the oven door during cooking as much as possible or the cake will sink in the middle.
11. Allow it to cool for 20 mins in the tin, then cover it with baking paper and tip tin upside down on wire cooling rack for about 30 minutes (this will help flatten the top of the cake), then tip tin (and cake) upright again and leave cake in tin until cool completely.

## OPEN CLASSES

- **Class 510** Decorated Cake - Uncut, judged on decoration only, can use a fake cake to decorate.
- **Class 511** Business House Cookery Challenge  
Sultana Cake, uniced, business name to be listed

### BUSSINESS HOUSE COOKERY CHALLENGE

Sponsor - Amanda Maher Family  
Certificate, Prize & Perpetual Trophy donated by Pavilion  
Supporters Committee of SHDA&P Society

- **Class 512** Sponge Sandwich Plain
- **Class 513** Tea Cake
- **Class 514** Fruit Loaf - Oblong Tin to be used.
- **Class 515** Boiled Fruit Cake
- **Class 516** Any Other Cake, uniced - Flavour to be listed.
- **Class 517** Vanilla Patty Cakes – 5 cakes
- **Class 518** Plain Scones – 5 Scones to be 5cm in size.
- **Class 519** Date Scones – 5 Scones to be 5cm in size.
- **Class 520** Biscuits – 5 One variety. Flavor to be listed.
- **Class 521** Shortbread – 5 To be cut into triangle shapes.
- **Class 522** Yo Yo's – 5 biscuits. Must be dainty in size.
- **Class 523** Cooked Slice – Plate of 6 pieces. 2 varieties, 3 pieces of each cut to 4cm x 5cm..
- **Class 524** Un-Cooked Slice – Plate of 6 pieces. 2 varieties, 3 pieces of each cut to 4cm x 5cm.
- **Class 525** Tartlets – 3 tarts, 1 variety, no bought pastry cases.

- **Class 526** Truffles – 6 pieces  
Chocolate only, should be presented in patty pan papers.
- **Class 527** Homemade Sweets / Chocolates – 6 pieces  
Any Variety
- **Class 528** Loaf of Sour Dough Bread - To be handmade.

## MEN'S CLASSES

- **Class 540** Chocolate Cake - Cake to be uniced.
- **Class 541** Biscuits – 5 pieces. Flavour to be listed.

### BEST EXHIBIT COOKERY MENS CLASSES

Sponsor: Jan Sinclair - Certificate & \$20.00

## SPECIAL NEEDS

Open to Adults with special needs only

- **Class 550** Packet Cake  
Any flavour, uniced. Packet top to accompany entry.
- **Class 551** Chocolate / Rum Balls - 5
- **Class 552** Uncooked Slice – Plate of 6 pieces. 2 varieties, 3 pieces of each cut to 4cm x 5cm.
- **Class 553** Decorated Cupcakes - 5  
Iced patty cakes, judged on cake & decoration. Decorations must be edible. Use patty pans, not patty cups.
- **Class 554** Honey Joys – 3 Patty pans to be used.

### BEST EXHIBIT COOKERY - SENIOR SPECIAL NEEDS

Sponsor: Swan Hill Innerwheel  
Certificate & \$10

## SHOW SOCIETY COOK OFF

Show Society Members only.

Perpetual Trophy donated by SHDA&P Society

- **Class 560** Uncooked Slice - 5  
One variety. Cut into 4cm x 5cm pieces.

### BEST EXHIBIT COOKERY

Sponsor: Aspire Jewellery  
Certificate & Voucher \$20

### AGGREGATE IN COOKERY

Sponsor: Mrs Shirley Hall - Certificate & Prize

## JUNIOR COOKERY

Head Steward: Jenny Asling 0497 382 077

Entry Fee: \$0.55

Prizes: 1<sup>st</sup> Certificate & \$2, 2<sup>nd</sup> Certificate & \$1, 3<sup>rd</sup> Certificate

Entries Close: Sunday 21<sup>st</sup> September

Exhibits Due: 4.30pm - 6pm Wednesday 1<sup>st</sup> October at  
Leisure Centre or 7.30am - 9am, Thursday 2<sup>nd</sup> October.

**STRICTLY NO LATE ENTRIES**

**Pavilion Closes:** Please note pavilions close at 4pm Saturday.  
Exhibits can be collected between 5pm- 6pm

• **Uncollected Exhibits:** Perishables not collected by 6pm will be disposed of.





Swan Hill District Agricultural & Pastoral Society Inc.

# WHITFIELD EXCAVATIONS SWAN HILL SHOW

Friday 3<sup>rd</sup> & Saturday 4<sup>th</sup> October 2025



## Read Notice to Exhibitors, Rules & Regulations in conjunction with the following Section Rules:

- Cakes must be baked prior to day of judging
- This section is open to all children 18 years of age and under

### Show Cooking Hints:

No springform tins to be used.

### Packet Cakes:

- All components of the packet cake must be used, except icing
- The cake should not be iced
- Include the label/top from the box with your exhibit

### Honey Joys, Chocolate Crackles, Patty Cakes:

- use patty pans, not party cups

## VAS Ltd JUNIOR COMPETITIONS



Winners of these Classes will compete at 2026 Group Final in Swan Hill, Sunday 3<sup>rd</sup> May. Winners at the Group Final will then compete at the 2026 VAS Ltd Finals in Wangaratta Sunday 21<sup>st</sup> June. Rules for these Classes are as follows.

• **Class 600** VAS Ltd Junior Boiled Fruit Cake  
Use recipe provided at end of this section.

• **Class 601** VAS Ltd Junior Carrot & Sultana Muffins - 4  
Sponsored by Rocky Lamattina & Sons.  
Use recipe provided at end of this section.

### VAS Ltd. Rules and Regulations:

1. The entrant must follow the recipe and specifications provided below.
2. The entrant must be under 18 years on the day of their local show.
3. Each cake entered must be the bona fide work of the exhibitor.
4. **Professionals are not eligible**, which is defined as someone that works professionally or derives the greater percentage of their income in that craft, art form or technique.
5. The **Junior Boiled Fruit Cake** competition follows the three levels of competition: Show Level, Group Level & State Level.
6. An exhibitor having won at their Local Show will bake another cake for the 2026 Group Final and then the winner of the Group Final will bake another cake for the State Final at the 2026 Royal Melbourne Show.
7. The **Junior Carrot & Sultana Muffins** competition follows the three levels of competition: Show Level, Group Level and State Level. An exhibitor having won at their Local Show will bake another set of Muffins for the 2026 Group Final and then the winner of the Group Final will bake another set of Muffins for the Annual VAS Ltd. Convention.
8. An exhibitor having won at Show Level is not eligible to enter the VAS Junior Boiled Cake competition at any other Show until after the Group Final judging.
9. An exhibitor is only eligible to represent one Group in the State Final.

10. If for any reason a winner is unable to compete at Group or State Final Level, then the second placegetter is eligible to compete.

11. If an exhibitor is found to have won more than one Group Final the exhibitor must forfeit/refund all prizes and will be disqualified from exhibiting for 12 months.

### State Final prizes:

Fruit Cake 1st: \$300 & VAS State Final Trophy; 2nd: \$150, 3rd: \$50

Carrot & Sultana Muffins: 1st: \$250 & VAS State Final Trophy; 2nd: \$100, 3rd: \$50

### VAS Ltd Junior Boiled Fruit Cake Recipe

only this recipe to be used

#### Ingredients - Preferred 100% Australian

- |                                      |                                 |
|--------------------------------------|---------------------------------|
| • 375g mixed fruit                   | • $\frac{3}{4}$ cup brown sugar |
| • 1 tsp mixed spice                  | • $\frac{1}{2}$ cup water       |
| • $\frac{1}{2}$ tsp bicarbonate soda | • 125g butter                   |
| • 2 eggs, lightly beaten             | • $\frac{1}{2}$ cup sherry      |
| • 2 tablespoons marmalade            | • 1 cup self-raising flour      |
| • 1 cup plain flour                  | • $\frac{1}{4}$ tsp salt        |

#### Method:

1. Place the mixed fruit, sugar, spice, water and butter in a large saucepan and bring to the boil
2. Simmer gently for 3 minutes, then remove from stove, add bicarbonate soda and allow to cool
3. Add the sherry, eggs and marmalade, mixing well
4. Fold in the sifted dry ingredients then place in a greased and lined 20cm round cake tin.
5. Bake in a moderately slow oven for 1.5 hrs or until cooked when tested.



### VAS Ltd Junior Carrot & Sultana Muffins Recipe

only this recipe to be used

#### Ingredients:

- 2  $\frac{1}{2}$  cups self-raising flour
- 1 tsp ground cinnamon
- $\frac{1}{4}$  tsp ground nutmeg
- 1 cup brown sugar (firmly packed)
- $\frac{1}{3}$  cup Sultanas chopped in half
- 1 cup coarsely grated carrot
- 1 tbsp orange marmalade
- 1 cup canola oil
- 2 eggs, lightly beaten
- $\frac{3}{4}$  cup orange juice
- 1 cup reduced fat milk



Swan Hill District Agricultural & Pastoral Society Inc.

# WHITFIELD EXCAVATIONS SWAN HILL SHOW

Friday 3<sup>rd</sup> & Saturday 4<sup>th</sup> October 2025



## Method:

1. Pre-heat oven to 190C (moderately hot).
2. Line a 12 hole muffin pan with round paper muffin cases – Classic white muffin cases size (30 – 40mm Height x 70 – 80mm Wide x 45 - 55mm Base).
3. Sift dry ingredients into a large bowl, stir in sultanas & carrots. Then add the combined marmalade, oil, eggs, juice and milk. Mix until just combined.
4. Spoon mixture evenly into muffin paper cases in muffin pan.
5. Cook for 20 minutes. To test if muffins are cooked insert cake skewer, if it comes out clean the muffins are ready.
6. Stand muffins in pan for 5 minutes before removing to cool.
7. Show Entries: Four (4) muffins per paper plate.

## NDAS JUNIOR COMPETITIONS



Winners and second place of these Classes will compete at 2026 Group Final in Swan Hill, Sunday 3<sup>rd</sup> May. Rules for these classes follow.

- **Class 602 NDAS Junior Chocolate Cake - Uniced**  
**18 years & under** as of day of local show.  
Use recipe provided at end of this section.

- **Class 603 NDAS Orange Cake - Uniced**  
**18 years & under** as of day of local show.  
Use recipe provided at end of this section.

- **Class 604 NDAS Anzac Biscuits - Plate of 4 biscuits.**  
**18 years & under** as of day of local show.  
Use recipe provided at end of this section.

- **Class 605 NDAS Decorated Marie Biscuits – Plate of 3 biscuits**  
Judged on decoration only. Decorations must be edible.  
**12 years & under** as of day of local show.

- **Class 606 NDAS Decorated Cupcakes – Plate of 3 cakes**  
Judged on decoration only. Decorations must be edible.  
Use patty pans, not party cups.  
**12 years & under** as of day of local show.

## NDAS Regulations:

1. The entrant must follow the specifications provided.
2. Each entry must be the bona fide work of the exhibitor.
3. Open to competitors of any age or gender under 18 years as of the date of the local Show.
4. An exhibitor having won first or second at their local Show will make another entry for the 2026 Group Final.
5. If competing at multiple shows you can only represent one show at the group finals in the respective section that you were either first or second placegetter which must be the first show within the Show season that you entered.
6. Exhibit to be displayed on a plate supplied by NDAS on the day of the group finals.

## NDAS Chocolate Cake Uniced

only this recipe to be used

### Ingredients:

- 3 tbs butter
- 1 cup self-raising flour
- ½ cup milk
- 1 cup castor sugar
- 2 large eggs
- ½ tsp vanilla
- 2 tbs cocoa

### Method:

1. Melt butter.
2. Put all other ingredients into a bowl, pour butter in.
3. Stir with a spoon until all ingredients are combined together. Beat on high using electric beater for 5 minutes.
4. Stir with a spoon until all ingredients are combined together, then beat on high using an electric beater for 5 minutes.
4. Pour into a round greased & lined 7" (18cm) round (no spring tins allowed).
5. Bake in oven at 180C (160C for fan forced oven) for approximately 40 minutes until a skewer inserted in the middle of the cake comes out with only a few moist crumbs clinging to it.
6. Cool in tin for 5 minutes.
7. Turn out of the tin onto a tea towel covered cake cooler.

## NDAS Orange Cake - Uniced

only this recipe to be used

### Ingredients:

- 1 Orange
- 1 cup castor sugar
- 180 gms butter, melted
- 3 eggs
- 1 ½ cups self-raising flour

### Method:

1. Grease & line a log/loaf cake tin 4½" x 8½" with baking paper.
2. Preheat oven to 180C.
3. Cut Orange and remove any seeds and place it in food processor.
4. Pulse Orange until liquid, add the remaining ingredients to the food processor and combine well.
5. Pour mixture into prepared tin.
6. Place in preheated oven for 40-45 minutes, or until cooked when tested with a fine skewer.
7. Remove from oven, let stand for five minutes.
8. Turn out onto tea towel covered cooling rack to cool.



Swan Hill District Agricultural & Pastoral Society Inc.

# WHITFIELD EXCAVATIONS SWAN HILL SHOW

Friday 3<sup>rd</sup> & Saturday 4<sup>th</sup> October 2025



## NDAS Anzac Biscuits

only this recipe to be used

### Ingredients:

- 1 cup Quick Oats
- 125gms butter
- 1 cup sugar
- 1 tablespoon golden syrup
- 1 cup self-raising flour
- 2 tbs boiling water
- 1 cup desiccated coconut
- 1 tsp bicarb soda

### Method:

1. Mix all the above dry ingredients in bowl.
2. Melt together butter, golden syrup, then add bicarb soda which has been dissolved in the boiling water.
3. Add to dry ingredients and mix well to a firm consistency.
4. Place 17gms of mixture on well-greased baking tray (or baking paper lined), leaving room to spread, bake in moderate oven until brown.
5. Cool on tray.

Note – Roll mixture into balls before placing on tray – makes neat round shape biscuits for the show bench.

## 18 YEARS & UNDER

- **Class 610** Decorated Cake - Judged on decoration only. Cake or dummy form acceptable.
- **Class 611** Cake of Own Choice - Cake to be round 20cm (8 inch) and uniced. Flavor to be listed.
- **Class 612** Decorated Cupcakes – 4 cakes. Iced patty cakes, judged on cake & decoration. Decorations must be edible. Use patty pans, not party cups.
- **Class 613** Uncooked Slice – 5 pieces cut to 4cm x 5cm.
- **Class 614** Biscuits – 6 biscuits. 2 varieties 3 each variety
- **Class 615** Yo Yo's – 5 biscuits

### BEST EXHIBIT COOKERY 18 YEARS & UNDER

Sponsor: Gorg Lifestyle - Certificate & prize

## 15 YEARS & UNDER

- **Class 620** Biscuits -6 biscuits. 2 varieties 3 each variety
- **Class 621** Cake of Own Choice - Cake to be round 20cm (8 inch) and uniced. Flavor to be listed.
- **Class 622** Biscuits – 6 biscuits. 2 varieties 3 each variety
- **Class 623** Decorated Cupcakes – 4 cakes  
Judged on cake & decoration. Decorations must be edible. Use patty pans, not party cups.
- **Class 624** Uncooked slice. 5 pieces cut to 4cm x 5cm.
- **Class 625** Yo Yo's – 5 biscuits

### BEST EXHIBIT COOKERY 15 YEARS & UNDER

Sponsor: Margaret Kruger - Certificate & \$10

## 12 YEARS & UNDER

- **Class 630** Biscuits – 6 One variety
- **Class 631** Chocolate/Rum Balls - 5

- **Class 632** Honey Joys – 3. Use patty pans, not party cups.
- **Class 633** Decorated Cupcakes - 3  
Judged on cake & decoration. Decorations must be edible. Use patty pans, not party cups.
- **Class 634** Uncooked Slice – 5. cut to 4cm x 5cm pieces.
- **Class 635** Yo Yo's – 5

### BEST EXHIBIT COOKERY 12 YEARS & UNDER - \$10

Sponsor: Sharp Fruit - Certificate & \$10

## 9 YEARS & UNDER

- **Class 640** Chocolate/Rum Balls – 5 pieces
- **Class 641** Honey Joys – 3 items.  
Use patty pans, not party cups.
- **Class 642** Packet Butter Cake. Uniced.  
Packet top to accompany entry.
- **Class 643** Decorated Cupcakes – 3 cakes  
Judged on cake & decoration. Decorations must be edible. Use patty pans, not party cups.
- **Class 644** Uncooked Slice – 5 pieces cut to 4cm x 5cm.
- **Class 645** Yo Yo's – 5 biscuits

### BEST EXHIBIT COOKERY 9 YEARS & UNDER

Sponsor: Jenny Asling - Certificate & \$10

## 6 YEARS & UNDER

- **Class 650** Pikelets – 5 pieces
- **Class 651** Chocolate/Rum Balls – 5 pieces
- **Class 652** Chocolate Crackles – 3 pieces  
Use patty pans, not party cups.
- **Class 653** Decorated Marie Biscuits – 3 biscuits  
Judged on decoration only. Decorations must be edible.
- **Class 654** Uncooked Slice – 5 pieces cut to 4cm x 5cm.
- **Class 655** Yo Yo's – 5 biscuits

### BEST EXHIBIT COOKERY 6 YEARS & UNDER

Sponsor: Lorraine Meier - Certificate & \$10

## SPECIAL NEEDS - UNDER 18 YEARS

- **Class 660** Packet Chocolate Cake - uniced.  
Packet top to accompany entry.
- **Class 661** Honey Joys -3 items  
Use patty pans, not party cups.
- **Class 662** Decorated Cupcakes – 5 cakes  
Judged on decoration only. Decorations must be edible. Use patty pans, not party cups.
- **Class 663** Chocolate/Rum Balls – 5 pieces

### BEST EXHIBIT COOKERY SPECIAL NEEDS UNDER 18 YEARS

Sponsor: Jenny Asling - Certificate & \$10

### BEST EXHIBIT JUNIOR COOKERY

Sponsor: Jan Sinclair - Certificate & \$20

### JUNIOR COOKERY AGGREGATE

Sponsor: Murray Valley Group CWA  
Aggregate Certificate & Cookbook



Swan Hill District Agricultural & Pastoral Society Inc.

# WHITFIELD EXCAVATIONS SWAN HILL SHOW

Friday 3<sup>rd</sup> & Saturday 4<sup>th</sup> October 2025



## CROCHET & KNITTING

\* See also Craft Seniors for more classes

**Head Steward Knitting & Crochet:** Liz Cox 0407 850 418

**Entry Fee:** \$1.10

**Prizes:** 1<sup>st</sup> Certificate & \$2, 2<sup>nd</sup> Certificate & \$1, 3<sup>rd</sup> Certificate

**Entries Close:** Sunday 21<sup>st</sup> September

**Exhibits Due:** 4.30pm - 6pm Wednesday 1<sup>st</sup> October at Centenary Pavilion or 7.30am - 9am, Thursday 2<sup>nd</sup> October.

**STRICTLY NO LATE ENTRIES**

Entrants are encouraged to take entries to the office by Tuesday or to their pavilion on Wednesday afternoon where possible.

**Pavilion Closes:** Please note pavilions close at 4pm Saturday. Exhibits (other than school exhibits) can be collected between 5pm- 6pm.

**Uncollected Exhibits:** may be collected from the Show Office from the Tuesday following the show for two weeks.

**Read Notice to Exhibitors and Rules & Regulations in conjunction with the following Section Rules:**

- Work to have been done within the last 12 months.
- Laundered or soiled work will be disqualified.
- When more than one article makes up an exhibit, each article must bear a card with class and exhibit number on it or all articles must be mounted on one card or board.
- Exhibits cards must be firmly attached to entries with a safety pin.

## VAS Ltd CROCHET & KNITTING

*These VAS classes proudly sponsored by Spotlight*



Winners of these Classes will compete at 2026 Group Final in Swan Hill, Sunday 3<sup>rd</sup> May. Winners at the Group Final will then compete at the 2026 VAS Ltd Finals in Wangaratta Sunday 21<sup>st</sup> June. Rules for these Classes are as follows.

- **Class 700** VAS Ltd Knitting Competition, Hand Knitted Blanket

**VAS Ltd Rules and Regulations 1-10 following as well as the following:**

- ▲ A Hand Knitted Blanket - no more than 1.5 metre on any one side.
- ▲ Knitted in one piece incorporating at least 5 different patterns.
- ▲ Each exhibit must be made from pure wool/wool blend of any ply.
- ▲ Exhibitor to attach label from wool used.

- **Class 701** VAS Ltd Crochet Competition - A 3D item **VAS Ltd. Rules and Regulations 1-10 following as well as the following:**

- ▲ A 3D item, no larger than 50cm on any one side made from pure wool/wool blend or cotton of any ply.
- ▲ Exhibitor to attach label from wool/cotton used.

## VAS Ltd. Rules and Regulations:

1. Each exhibit entered must be the bona fide work of the exhibitor.
2. Professionals are not eligible, which is defined as someone that works professionally or derives the greater percentage of their income in that craft, art form or technique.
3. All work is to have been completed in the last twelve (12) months prior to its entry at a local Show.
4. The competition follows the three levels of competition: Show Level, Group Level and State Level.
5. An exhibit having won at a Show will compete at the 2026 Group Final. The winning exhibit at the Group Final will then compete in the State Final at the 2026 Melbourne Royal Show.
6. An exhibitor having won at Show Level is not eligible to enter the VAS Ltd crochet/Knitting competition at any other Show until after the Group Final judging.
7. An exhibitor is only eligible to represent one Group in the State Final.
8. If for any reason a winner is unable to compete at Group or State Final Level, then the second placegetter is eligible to compete.
9. An exhibit having won at State Final is no longer eligible to compete in the competition.
10. If an exhibitor is found to have won more than one Group Final the exhibitor must forfeit/refund all prizes and will be disqualified from exhibiting for 12 months.

**State Final Prizes:** First Prize: \$300 Spotlight Voucher & VAS State Final Trophy Second Prize: \$150 Spotlight Voucher Third Prize: \$50 Spotlight Voucher

## NDAS CROCHET & KNITTING



Winners and second place of these Classes will compete at 2026 Group Final in Swan Hill, Sunday 3<sup>rd</sup> May. Rules for these classes follow.

- **Class 702** NDAS Crochet Article - any yarn  
No larger than 1m on any one side.
- **Class 703** NDAS Hand Knitted Garment or Article  
Made from pure wool/wool blend, label to be attached.
- **Class 803** NDAS One Person's Work  
One Person's Work - 3 items of different craft  
Eg. Knitting, Painting, Sewing, Crochet etc.  
Non-perishable items.  
To fit space maximum 1 square metre

## NDAS Regulations:

1. The entrant must follow the competition specifications provided.
2. Each entry must be the bona fide work of the exhibitor.
3. Open to competitors of any age or gender.



Swan Hill District Agricultural & Pastoral Society Inc.

# WHITFIELD EXCAVATIONS SWAN HILL SHOW

Friday 3<sup>rd</sup> & Saturday 4<sup>th</sup> October 2025



4. **Professionals are not eligible**, which is defined as someone that works professionally or derives the greater percentage of their income in that craft, art form or technique.
5. An exhibitor having won first or second at their local Show will be eligible for the 2026 Group Final.
6. If competing at multiple shows you can only represent one show at the group finals in the respective section that you were either first or second placegetter which must be the first show within the Show season that you entered.

## OPEN CLASSES

**Babies' articles to fit child up to 18 months in age.**

**Crochet finish allowable on baby knitting.**

- **Class 710** Dressed Doll, crochet or knitted  
Commercial doll may be used.
- **Class 711** Baby's Booties, crochet or knitted
- **Class 712** Baby's Bonnet, crochet or knitted
- **Class 713** Baby's Cardigan/Jacket, crochet or knitted
- **Class 714** Baby's Dress, crochet or knitted
- **Class 715** Baby's 3 Piece Set, crochet or knitted
- **Class 716** Baby's Shawl, 3ply, crochet or knitted
- **Class 717** Baby's Cot/Pram Blanket  
May be knitted or crocheted.

### BEST EXHIBIT BABY'S CROCHET & KNITTING

Phyllis Kirk Memorial  
Certificate & \$20

- **Class 718** Knee Rug, crochet  
Maximum size 1.5m
- **Class 719** Knee Rug, knitted  
Maximum size 1.5m
- **Class 720** Coat Hanger, crochet
- **Class 721** Coat Hanger, knitted
- **Class 722** Child's Cardigan/Jumper/Vest, knitted
- **Class 723** Adult's Cardigan/Jumper/Vest, knitted
- **Class 724** Scarf, crochet or knitted, synthetic
- **Class 725** Scarf, crochet or knitted, wool/wool blend
- **Class 726** Cap/Hat, crochet or knitted
- **Class 727** Toy, crochet or knitted
- **Class 728** Doll, crochet or knitted
- **Class 729** Cotton Article, crochet or knitted
- **Class 730** Doily or Table Center, crochet or knitted
- **Class 731** Crochet Edge on towel/washer
- **Class 732** Blanket, crochet or knitted  
Larger than 1.5m x 1.5m.
- **Class 733** Article made from homespun wool
- **Class 734** Crochet or knitted, Article, not otherwise specified. Maximum size 50cm x 50cm.

## NOVICE CLASSES

- **Class 740** Knitting, Any Article
- **Class 741** Crochet, Any Article

### BEST EXHIBIT CROCHET & KNITTING

Sponsor: Rhonda McInerney - Certificate & \$15

## BEANIE SECTION

- **Class 750** Traditional Beanie - crochet or knitted
- **Class 751** Most Adventurous Beanie
- **Class 752** Most Colourful Beanie
- **Class 753** Beanie - Scintillating Scarlet
- **Class 754** Beanie - any other medium

### BEST EXHIBIT BEANIE

Sponsor: Rebekah Sinclair - Certificate & \$20

### AGGREGATE IN CROCHET & KNITTING

Sponsor: Lillypilly Lane Fabrics  
Aggregate Certificate & \$25 Voucher

## HANDCRAFTS & HOBBIES

### Head Steward Handcrafts & Hobbies:

Sue Brasser 0409 503 010

**Entry Fee:** \$1.10

**Prizes:** 1<sup>st</sup> Certificate & \$2, 2<sup>nd</sup> Certificate & \$1, 3<sup>rd</sup> Certificate

**Entries Close:** Sunday 21<sup>st</sup> September

**Exhibits Due:** 4.30pm - 6pm Wednesday 1<sup>st</sup> October at Centenary Pavilion or 7.30am - 10am, Thursday 2<sup>nd</sup> October.

### STRICTLY NO LATE ENTRIES

Entrants are encouraged to take entries to the office by Tuesday 30<sup>th</sup> September or to their pavilion on Wednesday afternoon where possible.

**Pavilion Closes:** Please note pavilions close at 4pm Saturday.

Exhibits (other than school exhibits) can be collected between 5pm - 6pm

**Uncollected Exhibits:** May be collected from the Show Office from the Tuesday following the show for two weeks.

### Read Notice to Exhibitors and Rules & Regulations in conjunction with the following Section Rules:

- All framed works must have a hanging wire or one will be fitted at a cost of \$5.50 to the entrant, or the work cannot be accepted.
- Work to have been done within the last 12 months.
- Laundered or soiled work will be disqualified.
- When more than one article makes up an exhibit, each article must bear a card with class and exhibit number on it or all articles must be mounted on one card or board.
- Exhibits cards must be firmly attached to entries with a safety pin.

## VAS Ltd HANDCRAFTS & HOBBIES



*These VAS Ltd classes proudly sponsored by Spotlight*

Winners of these sections will compete at 2026 Group Final and if successful, will compete again at 2026 VAS Ltd. Finals. Rules for these classes follow.

- **Class 800** VAS Ltd Sewing Competition - Tote Bag  
VAS Rules and Regulations 1 – 10 as well as the following:



Swan Hill District Agricultural & Pastoral Society Inc.

# WHITFIELD EXCAVATIONS SWAN HILL SHOW

Friday 3<sup>rd</sup> & Saturday 4<sup>th</sup> October 2025



- ▲ Tote Bag up to 30cm width x 40cm height maximum, gusset depth up to 20cms, using approximately 50% recycled components.
- ▲ Machine sewn & may be hand finished, embellishments allowed.
- ▲ Knitted/Crocheted items not acceptable.

- **Class 801** VAS Ltd Embroidery Competition  
**VAS Ltd Rules and Regulations 1 – 10 as well as the following:**
  - ▲ The exhibit to be an article of hand embroidery any type, excluding cross stitch.
  - ▲ Each exhibit entered must be the bona fide work of the exhibitor.

- **Class 802** VAS Ltd Article of Cross Stitch Competition  
**VAS Ltd Rules and Regulations 1 – 10 as well as the following:**
  - ▲ The exhibit to be an article of cross stitch any type up to 60cm on all sides including frame. Minimal embellishments allowed.

## VAS Ltd HANDCRAFTS & HOBBIES

### Regulations:

1. Each exhibit entered must be the bona fide work of the exhibitor.
2. **Professionals are not eligible**, which is defined as someone that works professionally or derives the greater percentage of their income in that craft, art form or technique.
3. All work is to have been completed in the last twelve (12) months prior to its entry at a local Show.
4. The competition follows the three levels of competition: Show Level, Group Level and State Level.
5. An exhibit having won at a Show will compete at the 2026 Group Final. The winning exhibit at the Group Final will then compete in the State Final at the 2026 Melbourne Royal Show.
6. An exhibitor having won at Show Level is not eligible to enter the VAS Ltd sewing/embroidery/cross stitch competition at any other Show until after the Group Final judging.
7. An exhibitor is only eligible to represent one Group in the State Final.
8. If for any reason a winner is unable to compete at Group or State Final Level, then the second placegetter is eligible to compete.
9. An exhibit having won at State Final is no longer eligible to compete in the competition.
10. If an exhibitor is found to have won more than one Group Final the exhibitor must forfeit/refund all prizes and will be disqualified from exhibiting for 12 months.

**State Final Prizes:** First Prize: \$300 Spotlight Voucher & VAS State Final Trophy Second Prize: \$150 Spotlight Voucher Third Prize: \$50

## NDAS HANDCRAFTS & HOBBIES



Winners and second place of these Classes will compete at 2026 Group Final in Swan Hill, Sunday 3<sup>rd</sup> May. Rules for these classes follow.

- **Class 803** NDAS One Person's Work  
One Person's Work - 3 items of different craft eg. Knitting, Painting, Sewing, Crochet etc.  
Non-perishable items. To fit space maximum 1 square metre.
- **Class 804** NDAS Needlework - Cushion  
Any Medium - maximum 50cm x 50cm.
- **Class 805** NDAS - Men's Handcraft - One article of craft or hobby - Item up to 1 metre on any one side.  
Open to competitors of male gender only.
- **Class 806** NDAS Handmade Greeting Card  
Maximum size 20cm x 30cm. Must have envelope - but does not have to be handmade. Not to be made from a kit.  
Regulations at beginning of the Handcrafts & Hobbies section.

### NDAS Regulations:

1. The entrant must follow the competition specifications provided.
2. Each entry must be the bona fide work of the exhibitor.
3. Open to competitors of any age or gender.
4. **Professionals are not eligible**, which is defined as someone that works professionally or derives the greater percentage of their income in that craft, art form or technique.
5. An exhibitor having won first or second at their local Show will be eligible for the 2026 Group Final.
6. If competing at multiple shows you can only represent one show at the group finals in the respective section that you were either first or second placegetter which must be the first show within the Show season that you entered.

## NEEDLE & FANCYWORK

- **Class 810** Any other Hand Embroidery eg. bookmark
- **Class 811** Counted Threadwork on Aida Cloth  
Article may be framed.
- **Class 812** Counted Threadwork on Even Weave Linen  
Article may be framed.
- **Class 813** Counted Cross Stitch
- **Class 814** Fabric/Mesh Bag, machine or handsewn
- **Class 815** Cushion, decorated any style
- **Class 816** Machine Made Garment Child's  
Size up to 12yrs old, some hand sewing allowed.
- **Class 817** Machine Made Garment - Adult  
Some hand sewing allowed.
- **Class 818** Fidget Article  
Any medium, 77sq cm. maximum, to be sensory with zips, buttons etc.eg Book, Cushion, Quilt

# SPOTLIGHT





Swan Hill District Agricultural & Pastoral Society Inc.

# WHITFIELD EXCAVATIONS SWAN HILL SHOW

Friday 3<sup>rd</sup> & Saturday 4<sup>th</sup> October 2025



- **Class 819** Waist Apron
- **Class 820** Utility Apron
- **Class 821** Article/Garment, using denim
- **Class 822** Article, not scheduled
- **Class 823** Something new from something old

## BEST EXHIBIT NEEDLE & FANCYWORK

Sponsor: Sue Brasser  
Certificate & \$25

## CANVAS WORK

**Read Pavilion Regulations at beginning of Section and use with the following:**

- All work to be done by exhibitor and mounted.
- No commercial petit points allowed.
- Any framed work must NOT exceed 80cm x 60cm including frame.
- All work to be done on canvas (other classes under Needlework and Fancywork for items not on canvas)

- **Class 824** Any Canvas Article  
Sponsor: Newton Williams

**Prizes:** 1: Certificate & \$25 2: Certificate & \$1, 3: Certificate

## TEDDY BEAR & DOLL SECTION

- **Class 825** Bear
- **Class 826** Dressed Doll - home sewn outfit
- **Class 827** Sculptured Doll
- **Class 828** Reborn Doll

## BEST EXHIBIT BEARS / DOLLS

Sponsor: Aspire Jewellery - Certificate & Voucher \$20

## HANDCRAFTS & HOBBIES

- **Class 835** Rhinestone Art, Framed
- **Class 836** Folk Art
- **Class 837** Coat Hanger, not crochet or knitted
- **Class 838** Pin Cushion, any medium
- **Class 839** Wrapped Special Occasion Box  
Most attractive box, maximum size 25 sq cm
- **Class 840** Dreamcatcher
- **Class 841** Papercraft
- **Class 842** Macrame
- **Class 843** Christmas Decoration  
Includes decorated Christmas Tree- see notes for Novelty decorated Christmas tree in Junior Section
- **Class 844** Felt Article, using commercial felt
- **Class 845** Felt Article, using handmade felt
- **Class 846** Arrangement, using artificial/dried flowers
- **Class 847** Any Other Craft, not scheduled

## BEST EXHIBIT HANDCRAFTS & HOBBIES

Sponsor: Priceline Pharmacy  
Certificate & \$25 voucher

## SCRAPBOOKING & CARD MAKING

**Read Pavilion Regulations and use with the following:**

- **Scrapbooking:** pages must include one or more photos, journaling and a variety of techniques used.
- **Off the page:** projects must make use of paper and embellishments. Photos are not required except for in frames.
- **Card making:** cards must be embellished and employ a range of techniques.
- Entrants in this section are encouraged enter the NDAS Handmade Greeting Card section.

- **Class 850** Adult's - Birthday Card  
Cards must be embellished and employ a range of techniques.
- **Class 851** Child's Birthday Card  
Cards must be embellished and employ a range of techniques
- **Class 852** Special Occasion Greeting Card  
Cards must be embellished and employ a range of techniques.
- **Class 853** One Page - Baby  
Must include at least one photo and journaling.
- **Class 854** One Page - Traditional  
Minimal embellishments
- **Class 855** One Page, mixed medium
- **Class 856** Double Page - Any Theme  
Must include at least one photo and journaling, 30cm sq. maximum.
- **Class 857** Off the Page - Any Project  
Paper & embellishments must be used.

## BEST EXHIBIT SCRAPBOOKING

Sponsor: Sue Brasser – Certificate & Prize

## CALLIGRAPHY

Calligraphy on card, max. 13x18cm

- **Class 860** Calligraphy on Card  
Maximum size 13cm x 18cm using verse provided.

*When your hobbies  
get in the way of your work  
-that's ok; but when your  
hobbies get in the way of  
themselves...well.*

## BEADING SECTION

- **Class 861** Any Beaded Work

## CRAFT SENIORS

All work to be commenced by competitors after the age of 65 years

- **Class 865** Crochet/Knitted Blanket. May be crocheted together.



Swan Hill District Agricultural & Pastoral Society Inc.

# WHITFIELD EXCAVATIONS SWAN HILL SHOW

Friday 3<sup>rd</sup> & Saturday 4<sup>th</sup> October 2025



- **Class 866** Crochet/Knitted Scarf
- **Class 867** Crochet/Knitted Tea Cosy
- **Class 868** Crochet/Knitted Article, not scheduled
- **Class 869** Greeting Card
- **Class 870** Toy
- **Class 871** Coat Hanger
- **Class 872** Any other Craft
- **Class 873** Any other Artwork

## BEST EXHIBIT - SENIORS CRAFT

Sponsor: Kara Jade Candles  
Certificate & prize

## CRAFT ASSISTED LIVING

Open to those living in nursing homes and residential care facilities.

- **Class 875** Crochet/Knitted Article
- **Class 876** Toy
- **Class 877** Any other craft

## BEST EXHIBIT ASSISTED LIVING

Sponsor: Georgie Lifestyle  
Certificate & prize

## CRAFT SPECIAL NEEDS

Open to Adults with special needs only

**Sponsor:** Swan Hill Innerwheel

**Cash Prize:** \$10 for 1<sup>st</sup>

- **Class 880** Wool/Thread Article
- **Class 881** Woodwork/Metalwork
- **Class 882** Clay Article
- **Class 883** Mosaic Craft
- **Class 884** Paper/Fabric Craft
- **Class 885** Any other Craft

## BEST EXHIBIT - SPECIAL NEEDS

Sponsor: Sue Brasser  
Certificate & \$15

## JUNIOR HANDCRAFTS & HOBBIES

**Head Steward:** Mia Harrop 0456 778 578

**Entry Fee:** \$0.55

**Prizes:** 1<sup>st</sup> Certificate & \$2, 2<sup>nd</sup> Certificate & \$1, 3<sup>rd</sup> Certificate

**Encourage certificates:** at least 1 for every 10 entries.

**Bulk School Entries Close:** Sunday 14<sup>th</sup> September

**Entries Close:** Sunday 21<sup>st</sup> September

**Exhibits Due:** Centenary Pavilion between 4.30 – 6.00pm

Wednesday 2<sup>nd</sup> October or 7.30am - 10am Thursday 3<sup>rd</sup>

October. **STRICTLY NO LATER.**

Entrants are encouraged to take entries to the office before Tuesday or to their pavilion on Wednesday evening where possible.

• **Pavilion Closes:** Please note pavilions close at 4pm Saturday. Exhibits (other than school exhibits) can be collected between 5pm- 6pm.

- **Uncollected Exhibits:** May be collected from the Show Office from the Tuesday following the show for two weeks.

## Read Notice to Exhibitors and Rules & Regulations in conjunction with the following Section Rules:

- First prize winning exhibits at previous Swan Hill Shows CAN NOT compete again in the same class.
- Work to have been done within the last two years.
- Laundered or soiled work: will be disqualified.
- When more than one article makes up an exhibit, each article must have a card with class and exhibit number on it or all articles must be mounted on 1 card or board.
- **Exhibits cards:** must be firmly attached to entries with a safety pin.
- **School Teachers please note:** School exhibitors are asked not to collect exhibits from the pavilions. Schools should collect ALL work from the show office between Tuesday after the show and before the end of the second week of term.
- Note: Paintings, drawings etc are to be no bigger than A3.

## NDAS JUNIOR HANDCRAFTS & HOBBIES



Winners and second place of these Classes will compete at 2026 Group Final in Swan Hill, Sunday 3<sup>rd</sup> May. Rules for these classes follow.

- **Class 890** NDAS Handmade Greeting Card.  
Maximum 20 x 30cm. Must have envelope - but doesn't need to be handmade. Not to be made from a kit.  
Open to competitors of any age or gender under 18 years as of the date of the local Show.
- **Class 891** NDAS Cushion.  
Any medium, max. 50cm X 50cm

## Regulations:

1. The entrant must follow the specifications provided.
2. Each entry must be the bona fide work of the exhibitor.
3. Open to competitors of any age or gender under 18 years as of the date of the local Show.
4. An exhibitor having won first or second at their local Show are eligible for entry to the 2026 Group Final.
5. If competing at multiple shows you can only represent one show at the group finals in the respective section that you were either first or second placegetter which must be the first show within the Show season that you entered.

## 18 YEARS & UNDER

- **Class 892** Needlecraft Article
- **Class 893** Crochet/Knitted Article
- **Class 894** Key Ring. Handmade, using any medium.
- **Class 895** Easter Decoration
- **Class 896** Rhinestone Art. Artwork to be framed.
- **Class 897** Wood/Metalwork Article
- **Class 898** Origami
- **Class 899** Bookmark
- **Class 900** Any other Needlework/Craft



Swan Hill District Agricultural & Pastoral Society Inc.

# WHITFIELD EXCAVATIONS SWAN HILL SHOW

Friday 3<sup>rd</sup> & Saturday 4<sup>th</sup> October 2025



## BEST EXHIBIT HANDCRAFTS & HOBBIES 18 YEARS & UNDER

Sponsor: Paige Davison  
Certificate & \$10

### 15 YEARS & UNDER

- **Class 901** Needlecraft Article
- **Class 902** Crochet/Knitted Article
- **Class 903** Key Ring. Handmade, using any medium.
- **Class 904** Easter Decoration
- **Class 905** Rhinestone Art. Artwork to be framed.
- **Class 906** Wood/Metalwork Article
- **Class 907** Origami
- **Class 908** Bookmark
- **Class 909** Modelling, clay, dough, pottery etc
- **Class 910** Any other Needlework/Craft

## BEST EXHIBIT HANDCRAFTS & HOBBIES 15 YEARS & UNDER

Sponsor: Mandhi Sutton  
Certificate & \$10

### 12 YEARS & UNDER

- **Class 915** Needlecraft Article
- **Class 916** Key Ring. Handmade, using any medium.
- **Class 917** Easter Decoration
- **Class 918** Rhinestone Art. Artwork to be framed.
- **Class 919** Wood/Metalwork Article
- **Class 920** Origami
- **Class 921** Bookmark
- **Class 922** Modelling, clay, dough, pottery etc
- **Class 923** Paper Machè
- **Class 924** Pet/Painted Rock
- **Class 925** Decorated Wooden Spoon
- **Class 926** Craft Assembled from a Kit
- **Class 927** Any other Needlework/Craft

## BEST EXHIBIT HANDCRAFTS & HOBBIES 9 YEARS & UNDER

Sponsor: Mandhi Sutton – Certificate & \$10

### 9 YEARS & UNDER

- **Class 930** Key Ring. Handmade, using any medium.
- **Class 931** Easter Decoration
- **Class 932** Rhinestone Art. Artwork to be framed.
- **Class 933** Origami
- **Class 934** Bookmark
- **Class 935** Modelling, clay, dough, pottery etc
- **Class 936** Paper Machè
- **Class 937** Pet/Painted Rock
- **Class 938** Craft Assembled from a Kit
- **Class 939** Decorated Wooden Spoon
- **Class 940** Decorated Disposable Plate
- **Class 941** Article made from Recycled Material  
Creations to fit within a 45cm x 45cm allocated display space.
- **Class 942** Any other Needlework/Craft

## BEST EXHIBIT HANDCRAFTS & HOBBIES 9 YEARS & UNDER

Sponsor: Mandhi Sutton  
Certificate & \$10

### 6 YEARS & UNDER

- **Class 945** Easter Decoration
- **Class 946** Bookmark
- **Class 947** Modelling, clay, dough, pottery etc
- **Class 948** Paper Machè
- **Class 949** Pet/Painted Rock
- **Class 950** Craft Assembled from Kit
- **Class 951** Decorated Wooden Spoon
- **Class 952** Decorated Disposable Plate
- **Class 953** Article made from Recycled Material  
Creations to fit within a 45cm x 45cm allocated display space.
- **Class 954** Threaded Necklace/Bracelet
- **Class 955** Any other Needlework/Craft  
eg. loom bands

## BEST EXHIBIT HANDCRAFTS & HOBBIES 6 YEARS & UNDER

Sponsor: Ornamental Glass  
Certificate & \$10

### SPECIAL NEEDS 13 -18 YEARS

- **Class 956** Key Ring  
Handmade, using any medium.
- **Class 957** Easter Decoration
- **Class 958** Rhinestone Art. Artwork to be framed.
- **Class 959** Bookmark
- **Class 960** Pet/Painted Rock
- **Class 961** Craft Assembled from Kit
- **Class 962** Decorated Wooden Spoon
- **Class 963** Any other Needlework/Craft

## BEST EXHIBIT HANDCRAFTS & HOBBIES SPECIAL NEEDS 13 - 18 YEARS

Sponsor: Paige Davison - Certificate & \$10

### SPECIAL NEEDS 6 -12 YEARS

- **Class 965** Easter Decoration
- **Class 966** Bookmark
- **Class 967** Pet/Painted Rock
- **Class 968** Craft assembled from Kit
- **Class 969** Decorated Disposable Plate
- **Class 970** Decorated Wooden Spoon
- **Class 971** Article made from Recycled Material  
Creations to fit within a 45cm x 45cm allocated display space.
- **Class 972** Threaded Necklace/Bracelet
- **Class 973** Any other Needlework/Craft

## BEST EXHIBIT HANDCRAFTS & HOBBIES SPECIAL NEEDS 6 TO 12 YEARS

Sponsor: Paige Davison  
Certificate & \$10



Swan Hill District Agricultural & Pastoral Society Inc.

# WHITFIELD EXCAVATIONS SWAN HILL SHOW

Friday 3<sup>rd</sup> & Saturday 4<sup>th</sup> October 2025



## JUNIOR SCRAPBOOKING & CARD MAKING

**Read Pavilion Regulations and use with the following:**

**Scrapbooking pages:** must include one or more photos, journaling and a variety of techniques used.

**Off the page projects:** must make use of paper and embellishments. Photos are not required except for in frames

**Card making:** cards must be embellished and employ a range of techniques.

- **Class 975** One Page, 18 years & under
- **Class 976** One Page, 15 years & under
- **Class 977** One Page, 12 years & under
- **Class 978** One Page, 9 years & under
- **Class 979** One Page, 6 years & under

Entrants in Handmade Greeting Cards are invited to enter the NDAS Handmade Greeting Card section.

- **Class 980** Handmade Greeting Card, 18 years & under  
Must have envelope to fit, doesn't have to be handmade.
- **Class 981** Handmade Greeting Card, 15 years & under  
Must have envelope to fit, doesn't have to be handmade.
- **Class 982** Handmade Greeting Card, 12 years & under  
Must have envelope to fit, doesn't have to be handmade.
- **Class 983** Handmade Greeting Card, 9 years & under  
Must have envelope to fit, doesn't have to be handmade.
- **Class 984** Handmade Greeting Card, 6 years & under  
Must have envelope to fit, doesn't have to be handmade.

### BEST EXHIBIT - JUNIOR SCRAPBOOKING

Sponsor: Sue Brasser  
Certificate & \$10

## BUILDING BLOCKS eg. Lego

All exhibits in these classes must be own design and firmly mounted on a base or appropriately presented in a shoe box lid or similar to fit within 45cm x 45cm allocated display space.

No copies from Lego or similar books.

Special Needs section open to children with special needs, who work with a teacher aid.

- **Class 985** Building Blocks, 12 years & under
- **Class 986** Building Blocks, 9 years & under
- **Class 987** Building Blocks, 6 years & under
- **Class 988** Building Blocks, 13 to 18 years - Special Needs
- **Class 989** Building Blocks, 6 to 12 years - Special Needs

## NOVELTY DECORATED CHRISTMAS TREE

Must use wooden Christmas Tree provided. Tree to be collected from the Show Office. Trees are \$2 each and are paid at the time of collection. This section has no entry fee. Trees are to be decorated on both sides.

- **Class 990** Novelty Decorated Christmas Tree  
18yrs & under

- **Class 991** Novelty Decorated Christmas Tree  
15yrs & under
- **Class 992** Novelty Decorated Christmas Tree  
12yrs & under
- **Class 993** Novelty Decorated Christmas Tree  
9yrs & under
- **Class 994** Novelty Decorated Christmas Tree  
6yrs & under
- **Class 995** Novelty Decorated Christmas Tree  
Special Needs 13-18yrs
- **Class 996** Novelty Decorated Christmas Tree  
Special Needs 6-12yrs

### BEST EXHIBIT JUNIOR HANDCRAFTS & HOBBIES

Sponsor: Alison Bennett  
Certificate & \$20

## WOODWORK

**Head Steward:** Paige Davison

**Entry Fee:** \$1.10

**Prizes:** 1<sup>st</sup> Certificate & \$2, 2<sup>nd</sup> Certificate & \$1, 3<sup>rd</sup> Certificate

**Entries Close:** Sunday 21<sup>st</sup> September

**Exhibits Due:** 4.30pm - 6pm Wednesday 1<sup>st</sup> October at Centenary Pavilion or 7.30am - 10am, Thursday 2<sup>nd</sup> October.

**STRICTLY NO LATE ENTRIES**

**Pavilion Closes:** Please note pavilions close at 4pm Saturday. Exhibits to be collected between 5pm - 6pm or may be collected from the office after Tuesday 7<sup>th</sup> October.

**Uncollected Exhibits:** may be collected from the Show Office from the Tuesday following the show for two weeks.

**Read Notice to Exhibitors and Rules & Regulations in conjunction with the following Section Rules:**

- Section items judged on wood working techniques.
- An exhibitor can only exhibit a maximum of two entries in any class.
- This is an open aged section
- When more than one article makes up an exhibit, each article must bear a card with class and exhibit number on it.
- Exhibits cards must be firmly attached to entries

- **Class 1000** Turned Object
- **Class 1001** Scroll Saw Article
- **Class 1002** Recycled or Pallet Wood Article
- **Class 1003** Box with lid
- **Class 1004** Piece of Furniture  
Maximum size 1m square.
- **Class 1005** Any other Woodwork not scheduled
- **Class 1006** Article of Woodwork under 18 years.

### BEST EXHIBIT WOODWORK

Sponsor Bunnings  
Certificate & \$20 Bunnings voucher



Swan Hill District Agricultural & Pastoral Society Inc.

# WHITFIELD EXCAVATIONS SWAN HILL SHOW

Friday 3<sup>rd</sup> & Saturday 4<sup>th</sup> October 2025



## PATCHWORK

**Head Steward:** Leonie Conway 0407 090 523

**Entry Fee:** \$1.10

**Prizes:** 1<sup>st</sup> Certificate & \$2, 2<sup>nd</sup> Certificate & \$1, 3<sup>rd</sup> Certificate

**Entries Close:** Sunday 21<sup>st</sup> September

Entrants are encouraged to take entries to the office by Tuesday or to Stadium pavilion on Wednesday

**Exhibits Due:** 10am - 6pm Wednesday 1<sup>st</sup> October at Leisure Centre.

**STRICTLY NO LATE ENTRIES**

**Read Notice to Exhibitors and Rules & Regulations in conjunction with the following Section Rules:**

- All Patchwork must have a permanent/temporary sleeve to allow for work to be hung on a rod for display
- All Patchwork to be made by one person unless stated
- MAXIMUM 2 ENTRIES PER CLASS

## VAS Ltd PATCHWORK



Winner of this section will compete at 2026 Group Final and if successful at 2026 VAS Ltd. Finals

- **Class 1100** VAS Ltd Patchwork Competition  
Proudly Sponsored by Spotlight

### VAS Ltd Rules and Regulations

1. The exhibit is to be no larger than 90cm x 125cm.
2. Machine/hand pieced and quilted by exhibitor only.
3. Minimal Embellishments. Small amount only, not to overpower patchwork.
4. Each exhibit entered must be the bona fide work of the exhibitor.
5. Professionals are not eligible, which is defined as someone that works professionally or derives the greater percentage of their income in that craft, art form or technique.
6. All work is to have been completed in the last twelve (12) months prior to its entry at a local Show.
7. The competition follows the three levels of competition: Show Level, Group Level and State Level.
8. An exhibit having won at a Show will compete at the 2026 Group Final. The winning exhibit at the Group Final will then compete in the State Final at the 2026 Melbourne Royal Show.
9. An exhibitor having won at Show Level is not eligible to enter the VAS Patchwork competition at any other Show until after the Group Final judging.
10. An exhibitor is only eligible to represent one Group in the State Final.
11. If for any reason a winner is unable to compete at Group or State Final Level, then the second placegetter is eligible to compete.
12. An exhibit having won at State Final is no longer eligible to compete in the competition.

13. If an exhibitor is found to have won more than one Group Final the exhibitor must forfeit/refund all prizes and will be disqualified from exhibiting for 12 months.

State Final Prizes: First Prize: \$300 Spotlight Voucher & VAS State Final Trophy, Second Prize: \$150 Spotlight Voucher, Third Prize: \$50 Spotlight Voucher

## SPOTLIGHT

## NDAS PATCHWORK



Winners and second place of these sections will compete at 2026 Group Final and if successful, will compete again at 2026 VAS Ltd. Finals. Rules for these classes follow.

- **Class 803** NDAS One Person's Work  
One Person's Work - 3 items of different craft  
Eg. Knitting, Painting, Sewing, Crochet etc.  
Non-perishable items. To fit space maximum 1 square metre.

### NDAS Regulations:

1. The entrant must follow the competition specifications provided.
2. Each entry must be the bona fide work of the exhibitor.
3. Open to competitors of any age or gender.
4. Professionals are not eligible, which is defined as someone that works professionally or derives the greater percentage of their income in that craft, art form or technique.
5. An exhibitor having won first or second at their local Show will be eligible for the 2026 Group Final.
6. If competing at multiple shows you can only represent one show at the group finals in the respective section that you were either first or second placegetter which must be the first show within the Show season that you entered.

## PATCHWORK & QUILTING

- **Class 1102** Patchwork Table Runner
- **Class 1103** Beginners First Piece, Machine / Hand Quilted  
A beginner is a person who has been learning the art for less than 2 years.

### PATCHWORK - BEGINNERS FIRST PIECE

Sponsor: Neet Stitches (Juanita Braden) – Certificate & \$20

- **Class 1104** Bag, pieced / embroidered
- **Class 1105** Article Hand Pieced. May include a little machine sewing. May be hand or machine quilted.
- **Class 1106** Machine Pieced Patchwork. May include a little hand sewing. Machine or hand quilted.
- **Class 1107** Piece of Appliqued Patchwork
- **Class 1108** Wall Hanging. Not exceeding 1m x 1m.
- **Class 1109** Patchwork Baby Quilt. Can be pieced, appliqued or stitched.
- **Class 1110** Any other Quilt or Article



Swan Hill District Agricultural & Pastoral Society Inc.

# WHITFIELD EXCAVATIONS SWAN HILL SHOW

Friday 3<sup>rd</sup> & Saturday 4<sup>th</sup> October 2025



- **Class 1111** Contemporary Art Quilt. Incorporating different mixed media techniques such as collage, painting, beading or stitching.
- **Class 1112** Patchwork Includes Design in Stitchery Patchwork which includes design in Stitchery either by hand or machine pieced which is professionally quilted, to be judged on colour & design.
- **Class 1113** Cushion machine or hand piece, may have embroidery, applique.
- **Class 1114** Appliqued Patchwork Professionally Quilted To be judged on colour & design.
- **Class 1115** Embroidered Patchwork Professionally Quilted. To be judged on colour & design.
- **Class 1116** Patchwork Professionally Quilted Judged on colour & design.

## BEST EXHIBIT PATCHWORK PROFESSIONALLY QUILTED

Sponsor: Annette Brown

1st Prize: Machine Quilting, voucher - \$50

Includes classes 1114, 1115, 1116.

- **Class 1117** Article of Patchwork made by more than one person.
- **Class 1118** Article of Patchwork Design in Stitchery hand or machine pieced – hand or machine quilted.
- **Class 1119** Article of Embroidered Patchwork hand or machine pieced – hand or machine quilted.

## BEST EXHIBIT PATCHWORK APPLIQUED

Sponsor: Kennedy Showcase Jewelers  
Certificate, Voucher \$20

## BEST EXHIBIT PATCHWORK

Sponsor: Murray Mallee Quilters - Certificate, Sash & \$30.00  
Excluding, 1114, 1115, 1116.

## JUNIOR PATCHWORK

Head Steward: Leonie Conway 0407 090 523

Entry Fee: \$1.10

Prizes: 1<sup>st</sup> Certificate & \$2, 2<sup>nd</sup> Certificate & \$1, 3<sup>rd</sup> Certificate

Entries Close: Sunday 21<sup>st</sup> September

Entrants are encouraged to take entries to the office by Tuesday or to Stadium pavilion on Wednesday

Exhibits Due: 10am - 6pm Wednesday 1<sup>st</sup> October at Leisure Centre.

### STRICTLY NO LATE ENTRIES

Read Notice to Exhibitors and Rules & Regulations in conjunction with the following Section Rules:

- All Patchwork must have a permanent/temporary sleeve to allow for work to be hung on a rod for display
- All Patchwork to be made by one person unless stated
  - MAXIMUM 2 ENTRIES PER CLASS

- **Class 1125** Primary Student Patchwork Can be professionally quilted. Will be judged on colour & design.
- **Class 1126** Primary Student Patchwork. To include applique.

## BEST EXHIBIT PATCHWORK PRIMARY

Sponsor: Jan Murphy - Certificate & \$15

- **Class 1127** Secondary Student Patchwork Can be professionally quilted. Will be judged on colour & design.
- **Class 1128** Secondary Student Patchwork To include applique

## BEST EXHIBIT SECONDARY PATCHWORK

Sponsor: Lillypilly Lane Fabrics  
Certificate & \$25 Voucher

- **Class 1129** Quilt or Wall Hanging To be made by more than one person.
- **Class 1130** Piece of Patchwork To be no greater than 40cm x 40cm in any technique may be used.

## PATCHWORK - PEOPLES CHOICE

Sponsor: Swan Hill Conveyancing Services  
Sash, Certificate & \$25

## COUNTRY WOMENS ASSOC

### Group Craft Leader:

Sue O'Halloran 0429 201 744 & Julie Williams

Steward: Meg Irvin 0428 030 161

Entry Fee: \$1.10

Entries Close: Sunday 21<sup>st</sup> September

Exhibits Due: 4.30pm - 6pm Wednesday 1<sup>st</sup> October at Centenary Pavilion or 7.30am - 10am, Thursday 2<sup>nd</sup> October.

STRICTLY NO LATE ENTRIES

Read Notice to Exhibitors and Rules & Regulations in conjunction with the following Section Rules:

- Entrants are encouraged to stage their entries on Wednesday afternoon where possible.
- Backdrops and entries must be set up for overall judging by 10am Thursday.
- Space Allocated for Branch Entries: Depth 76cm x Height 93cm x Length 182cm. No sidewalls allowed.
- All articles must have been completed in the last two (2) years, and not shown previously in the CWA section.
- Each article will be judged on its own merit and points awarded. Ten points will be allocated for variety and ten points for presentation.
- Backdrops must not hang over the edge of the bench.
- Fresh flowers may be used to enhance presentation only, not to be judged. No artificial flowers, leaves, etc. may be used.





Swan Hill District Agricultural & Pastoral Society Inc.

# WHITFIELD EXCAVATIONS SWAN HILL SHOW

Friday 3<sup>rd</sup> & Saturday 4<sup>th</sup> October 2025



## CWA EXHIBITS

- **Class 1200** Homecrafts & Handcrafts  
Exhibit requires 5 items of each type.  
Prizes: 1: Certificate, Ribbon & \$10; 2: Certificate, Ribbon & \$5; 3: Certificate, Ribbon
- **Class 1201** One Woman's Work  
Exhibit requires 3 distinct items of craft.  
Space Allocated: 45cm square.  
1: Certificate, Rosette, \$2; 2: Certificate, \$1; 3: Certificate

### BEST EXHIBIT CWA

## CWA JUNIOR SECTION

**Entry Fee:** \$0.55

**Entries Close:** 12mn, Sunday 21<sup>st</sup> September

**Exhibits Due:** Leisure Centre between 4.30pm – 6.00pm  
Wednesday 1<sup>st</sup> or 7.30am - 10am, Thursday 2<sup>nd</sup> October.

**STRICTLY NO LATER.**

**Read Notice to Exhibitors Rules & Regulations in conjunction with the CWA Section Rules.**

- **Class 1205** Handcraft & Homecraft - Primary  
Exhibit requires 1 item of each craft.  
Sponsor: Murray Valley Group  
Prizes: 1: Certificate, Ribbon, Book, \$2; 2: Certificate, Ribbon, \$1; 3: Certificate, Ribbon.
- **Class 1206** Handcrafts & Homecraft - Secondary  
Exhibit requires 1 item of each craft.  
Sponsor: Murray Valley Group  
Prizes: 1: Certificate, Ribbon, Book, \$2; 2: Certificate, Ribbon, \$1; 3: Certificate, Ribbon
- **Class 1207** Handcrafts & Homecraft - Post Secondary  
Exhibit requires 1 item of each craft.  
Competitor aged 18-25 years.  
Sponsors: Murray Valley Group  
Prizes: 1: Certificate, \$2, 2: Certificate, \$1, 3: Certificate

### CWA - BEST EXHIBIT – JUNIOR

#### GLADYS DEVEREUX MEMORIAL TROPHY

Awarded to entrant with most points in the primary/secondary sections.

Sponsor: Nykora CWA Branch

## AGRICULTURAL PRODUCE

**Head Steward:** Paige Davison

**Entry Fee:** \$1.10

**Prizes:** 1<sup>st</sup> Certificate & \$2, 2<sup>nd</sup> Certificate & \$1, 3<sup>rd</sup> Certificate

**Entries Close:** Sunday 21<sup>st</sup> September

**Exhibits Due:** 4.30pm - 6pm Wednesday 1<sup>st</sup> October at Centenary Pavilion or 7.30am - 10am, Thursday 2<sup>nd</sup> October,

**STRICTLY NO LATE ENTRIES**

**Read Notice to Exhibitors, Rules & Regulations in conjunction with the following Section Rules:**

- Entrants are encouraged to stage their entries on Wednesday afternoon where possible.

- Please note pavilions close at 4pm Saturday. Exhibits to be collected between 5pm- 6pm or may be collected from the office the week following the show. Perishables not collected on Saturday will be disposed of.

- Please supply ABN if applicable
- All sheaves to be at least 46cm (18inches) in circumference
- Grains and clover to be exhibited in a clean 4 litre bucket

- **Class 1300** Wheat, any variety
- **Class 1301** Oats, any variety
- **Class 1302** Barley, any variety
- **Class 1303** Peas
- **Class 1304** Any other seed
- **Class 1305** Sheaf of Barley, green
- **Class 1306** Sheaf of Wheat, green
- **Class 1307** Sheaf of Oats, green
- **Class 1308** Sheaf of any other crop, green
- **Class 1309** Sod of Clover, irrigation
- **Class 1310** Sod of Mixed Pasture

### BEST EXHIBIT SODS

Sponsor: Amanda Maher Certificate & Prize

- **Class 1311** Farm Exhibit - 1 entry per person  
3 varieties, from Agricultural Produce Section,
- **Class 1312** Biggest Weed  
Must be 18 years & under. No prickles please.

### BEST EXHIBIT AGRICULTURAL PRODUCE

Excludes Biggest Weed

Sponsor: Bunnings Swan Hill - Certificate, \$20 Voucher

## FARMYARD PRODUCE

**Head Steward:** Janette Davison

**Entry Fee:** \$1.10

**Prizes:** 1<sup>st</sup> Certificate & \$2, 2<sup>nd</sup> Certificate & \$1, 3<sup>rd</sup> Certificate

**Entries Close:** Wednesday 1<sup>st</sup> October 12pm.

**Exhibits Due:** 4.30pm - 6pm Wednesday 1<sup>st</sup> October at Leisure Centre or 7.30am - 10am, Thursday 2<sup>nd</sup> October.

**STRICTLY NO LATE ENTRIES.**

**Read Notice to Exhibitors and Rules & Regulations in conjunction with the following Section Rules:**

- Entrants are encouraged to stage their entries on Wednesday afternoon where possible.
- All produce must be grown by the exhibitor on their property
- Diseased entries disqualified. No Commercial entries.

## EGGS

Half dozen eggs must be displayed in an egg carton.

Eggs are to be uniform in size and colour, to be clean but not polished and must not be tampered with

- **Class 1400** Hen Eggs, white shells
- **Class 1401** Hen Eggs, brown shells
- **Class 1402** Hen Eggs, light brown
- **Class 1403** Hen Eggs, AOC, not brown



Swan Hill District Agricultural & Pastoral Society Inc.

# WHITFIELD EXCAVATIONS SWAN HILL SHOW

Friday 3<sup>rd</sup> & Saturday 4<sup>th</sup> October 2025



- **Class 1404** Turkey Eggs
  - **Class 1405** Goose/Duck Eggs
  - **Class 1406** Any other Eggs
  - **Class 1407** Decorated Egg - Open Age
- Decorated Egg** - To be freshly hard boiled or blown, supported. Judged on decoration and proportion.

## BEST DECORATED EGG

Sponsor: Jan Sinclair  
Certificate & \$10

## BEST EXHIBIT EGGS

Sponsor: Jan Sinclair  
Certificate & \$10  
Excluding 1407

## VEGETABLES

- **Class 1410** Bunch Asparagus, (5) Spears
- **Class 1411** Cabbage, (1) - with leaves.
- **Class 1412** Green Peas, (10) pods
- **Class 1413** Rhubarb, (3) sticks, pulled not cut  
Approximately 10cm of leaf
- **Class 1414** Beetroot, (3) - with Tops
- **Class 1415** Silverbeet, (3) sticks
- **Class 1416** Butternut Pumpkin (1)
- **Class 1417** Pumpkin any other variety (1)
- **Class 1418** Bunch of Fresh Herbs - More than 3 varieties.
- **Class 1419** Any Other Vegetable

## BEST EXHIBIT VEGETABLES

Sponsor: Swan Hill District Garden Club  
Certificate & \$10

## FRUIT & NUTS

- **Class 1420** Navel Oranges (3)
- **Class 1421** Late Valencia Oranges (3)
- **Class 1422** Oranges any other variety (3)  
Variety to be listed.
- **Class 1423** Lemons (3)
- **Class 1424** Grapefruit (3)
- **Class 1425** Mandarins (3)
- **Class 1426** Citrus any other variety (3)  
Variety to be listed.
- **Class 1427** Any Variety Nuts (10)

## BEST EXHIBIT FRUIT & NUTS

Sponsor: Rhonda McInerney  
Certificate & \$10

## AGGREGATE FARMYARD PRODUCE

Sponsor: Bunnings Swan Hill  
Certificate, \$20 voucher  
Excludes Class 1407

## JUNIOR FARMYARD PRODUCE

**Entry Fee:** \$0.55

**Prizes:** 1<sup>st</sup> Certificate & \$2, 2<sup>nd</sup> Certificate & \$1, 3<sup>rd</sup> Certificate

**Entries Close:** Wednesday 1<sup>st</sup> October 12 pm

**Exhibits Due:** 4.30pm - 6pm Wednesday 2<sup>nd</sup> October at

Leisure Centre or 7.30am - 10am, Thursday 3<sup>rd</sup> October

Entrants are encouraged to stage their entries on Wednesday evening where possible.

### STRICTLY NO LATE ENTRIES

**Read Notice to Exhibitors and Rules & Regulations in conjunction with the following Section Rules:**

- All eggs must be produced by the exhibitor's poultry on their property.
- Open to ages 12 years & under
- Decorated eggs must be freshly hard boiled or blown, supported and will be judged on decoration and proportion.
- Over 12yrs may enter in the Open age.

## JUNIOR EGGS

Half Dozen Eggs must be displayed in an egg carton.

Eggs to be uniform in size and colour, to be clean but not polished and must not be tampered with.

Open to Exhibitors aged 12 years & under.

- **Class 1430** Goose/Duck Eggs
- **Class 1431** Hen Eggs, white shell
- **Class 1432** Hen Eggs, brown shell
- **Class 1433** Hen Eggs, light brown
- **Class 1434** Hen Eggs, AOC, not brown
- **Class 1435** Turkey Eggs
- **Class 1436** Any other Eggs

## BEST EXHIBIT JUNIOR EGGS

Sponsor: Jan Sinclair  
Certificate & \$10

## DECORATED EGG

Must be freshly hard boiled or blown and supported.

Over 12yrs may enter in the open age feature (see Farmyard Produce Section).

- **Class 1437** Decorated Egg - 12 years & under
- **Class 1438** Decorated Egg - 9 years & under
- **Class 1439** Decorated Egg - 6 years & under

## BEST EXHIBIT JUNIOR DECORATED EGG

Sponsor: Kirsty Kaeslin  
Certificate & \$10

- **Class 1440** Decorated Egg - Special Needs - 13 to 18 years
- **Class 1441** Decorated Egg - Special Needs - 6 to 12 years

## BEST EXHIBIT DECORATED EGG - SPECIAL NEEDS

Sponsor: Kirsty Kaeslin  
Certificate & \$10



Swan Hill District Agricultural & Pastoral Society Inc.

# WHITFIELD EXCAVATIONS SWAN HILL SHOW

Friday 3<sup>rd</sup> & Saturday 4<sup>th</sup> October 2025



## DECORATED CHICKEN IMAGE

Decorate image of Chicken using clean, eggshells.

Image of Chicken available from our Show Office or website  
www.swanhillshow.com.au

- **Class 1442** Decorated Chicken Image - 12 years & under
- **Class 1443** Decorated Chicken Image - 9 years & under
- **Class 1444** Decorated Chicken Image - 6 years & under
- **Class 1445** Decorated Chicken Image - Special Needs - 13 to 18 years
- **Class 1446** Decorated Chicken Image - Special Needs - 6 to 12 years

### BEST EXHIBIT DECORATED CHICKEN IMAGE

Sponsor: Pauline Jardine Certificate & \$10

## ART

**Head Steward:** Judy Brawn 0448 918 771

**Entry Fee:** \$1.10

**Sponsor:** Mallee Artists Swan Hill Inc.

**Prizes:** 1<sup>st</sup> Certificate & \$2, 2<sup>nd</sup> Certificate & \$1, 3<sup>rd</sup> Certificate

**Entries Close:** Sunday 21<sup>st</sup> September

**Exhibits Due:** 10am - 12 noon Wednesday 1<sup>st</sup> October at Centenary Pavilion. **STRICTLY NO LATE ENTRIES**

**Please Note:** ALL Art Entries must be delivered to the Show Office with Exhibit Tags attached.

Entrants are encouraged to take entries to the office by Tuesday where possible or to their pavilion on Wednesday morning.

**Pavilion Closes:** Please note pavilions close at 4pm Saturday. Exhibits can be collected between 5pm- 6pm

**Uncollected Exhibits:** May be collected from the Show Office from the Tuesday following the show for two weeks.

### Read Notice to Exhibitors, Rules & Regulations in conjunction with the following Section Rules:

- All framed works must have a hanging wire or one will be fitted at a cost of \$5.50 to the entrant, or the work cannot be accepted.
- All entries must have exhibit entry ticket attached to front bottom corner of exhibit.
- All entries must be the original uncopied work of the exhibitor.
- Work must have been completed in the past 2 years and not previously exhibited at the Swan Hill Show.
- Please note, limit of 2 exhibits per person per class.
- Maximum size including frame is not to exceed 78cm x 81cm.
- All work must be ready to hang.
- Signatures on work: Artists signatures should not be visible to judges & must be taped over by the competitor before exhibiting.



**Mallee Artists  
Swan Hill Inc.**

## NDAS COMPETITIONS



Winners and second place of these sections will compete at 2026 Group Final and if successful, will compete again at 2026 VAS Ltd. Finals.  
Rules for these classes follow.

- **Class 803** NDAS One Person's Work  
- 3 items of different craft  
Eg. Knitting, Painting, Sewing, Crochet etc.  
Non-perishable items. To fit space maximum 1 square metre.  
Regulations are provided at start of Handcrafts & Hobbies section.

## OPEN ART

- **Class 1501** Acrylic
- **Class 1502** Oils
- **Class 1503** Water Colour
- **Class 1504** Pencil, Pen, Charcoal
- **Class 1505** Pastel
- **Class 1506** Mixed Medium - Including collage.
- **Class 1507** Miniatures - Any medium, size restriction of actual art 10 x 10cm
- **Class 1508** Artwork, not scheduled

### BEST EXHIBIT ART

Sponsor: Ann-Louise Crowe  
Certificate & \$20

## SPECIAL NEEDS ART

Open to Adults with special needs.

- **Class 1510** Painting, any medium
- **Class 1511** Pencil, Pen, Charcoal
- **Class 1512** Mixed Medium - Including collage.
- **Class 1513** Artwork, not scheduled

### BEST EXHIBIT ART SPECIAL NEEDS

Sponsor: Swan Hill Innerwheel  
Certificate & \$20

## ASSISTED LIVING

Open to adults who live in nursing homes and residential care facilities.

- **Class 1520** Artwork, any medium
- **Class 1521** Colouring - Pre-drawn picture.

### BEST EXHIBIT ART ASSISTED LIVING

Sponsor: Priceline Pharmacy  
Certificate & \$25 voucher



Swan Hill District Agricultural & Pastoral Society Inc.

# WHITFIELD EXCAVATIONS SWAN HILL SHOW

Friday 3<sup>rd</sup> & Saturday 4<sup>th</sup> October 2025



## JUNIOR ART

**Head Steward:** Lucia Packer 0428 500 514

**Entry Fee:** \$0.55

**Prizes:** 1<sup>st</sup> Certificate & \$2, 2<sup>nd</sup> Certificate & \$1, 3<sup>rd</sup> Certificate  
Judges are encouraged to award at least 1 Encouragement Award per 10 entries.

**School Entries Close:** Sunday 14<sup>th</sup> September

**School Exhibits Due:** Friday 20<sup>th</sup> September. Entries must be delivered to the Show Office with Exhibit Tags attached.

**Individual Entries Close:** Sunday 21<sup>st</sup> September.

Exhibits can be delivered to the show office during September or by Tuesday 30<sup>th</sup> September.

### STRICTLY NO LATE ENTRIES

**School Exhibit Collection:** Exhibits are to be collected from the Show Office between Tuesday 7<sup>th</sup> and Friday 10<sup>th</sup> October 9am - 5pm.

**Pavilion Closes:** Please note pavilions close at 4pm Saturday. Exhibits (other than school exhibits) can be collected between 5pm - 6pm.

**Uncollected Exhibits:** May be collected from the Show Office from the Tuesday following the show for two weeks.

### Read Notice to Exhibitors, Rules & Regulations in conjunction with the following Section Rules:

- All entries must have exhibit tag attached to front bottom corner of exhibit.
- All work must have been completed in the past 12 months
- All junior work to be unframed & unmounted.
- All paintings, drawings and posters in this section are to be no larger than A3 or 29.7cm x 42cm.
- Canvas must be able to be hung.
- Larger work will not be judged.
- Traced work will not be considered.
- Secondary students may enter larger pieces in the Senior Art Open sections which will need to be able to be hung.
- Special Needs Section: is open to all children who have an integration aide or attend a Special Needs School - they can also enter into the other age sections as well.
- We also have an Assisted Living Section open to those who live in Nursing Homes or Residential Care Facilities.
- Please note only two exhibits per person per class.

## 18 YEARS & UNDER

- **Class 1530** Watercolour
- **Class 1531** Oil or Acrylic
- **Class 1532** Pen, Pencil or Charcoal
- **Class 1533** Pastel
- **Class 1534** Artwork, not scheduled

### BEST EXHIBIT ART 18YRS & UNDER

Sponsor: Kirsty Kaeslin –  
Certificate & \$10

## 15 YEARS & UNDER

- **Class 1535** Watercolour
- **Class 1536** Oil or Acrylic
- **Class 1537** Pen, Pencil or Charcoal
- **Class 1538** Pastel
- **Class 1539** Artwork, not scheduled

### BEST EXHIBIT ART 15 YRS & UNDER

Sponsor: Tricia Witney - Certificate & \$10

## 12 YEARS & UNDER

- **Class 1545** Painting
- **Class 1546** Drawing
- **Class 1547** Collage
- **Class 1548** Pastel
- **Class 1549** Artwork, not scheduled

### BEST EXHIBIT ART 12 YRS & UNDER

Sponsor: Tricia Witney - Certificate & \$10

## 9 YEARS & UNDER

- **Class 1555** Painting
- **Class 1556** Drawing
- **Class 1557** Pastel
- **Class 1558** Collage
- **Class 1559** Colouring - Pre-drawn picture.
- **Class 1560** Artwork, not scheduled

### BEST EXHIBIT ART 9 YRS & UNDER

Sponsor: Ornamental Glass - Certificate & \$10

## 6 YEARS & UNDER

- **Class 1565** Painting
- **Class 1566** Drawing
- **Class 1567** Pastel
- **Class 1568** Collage
- **Class 1569** Colouring - Pre-drawn picture.
- **Class 1570** Artwork, not scheduled

### BEST EXHIBIT ART 6 YRS & UNDER

Sponsor: Jenny Asling - Certificate & \$10

## SPECIAL NEEDS 13 to 18 YEARS

Open to children with special needs, who work with a teacher aid. Size no larger than A3 (29.7 x 42cm), do not mount, if canvas must be able to hang

- **Class 1575** Painting
- **Class 1576** Pen, Pencil or Charcoal
- **Class 1577** Pastel
- **Class 1578** Collage
- **Class 1579** Colouring - Pre-drawn picture.
- **Class 1580** Artwork, not scheduled

### BEST EXHIBIT ART SPECIAL NEEDS - 13 - 18 YRS

Sponsor: Margaret Kruger - Certificate & \$10



Swan Hill District Agricultural & Pastoral Society Inc.

# WHITFIELD EXCAVATIONS SWAN HILL SHOW

Friday 3<sup>rd</sup> & Saturday 4<sup>th</sup> October 2025



## SPECIAL NEEDS 6 to 12 YEARS

Open to children with special needs, who work with a teacher aid. Size no larger than A3 (29.7 x 42cm), do not mount, if canvas must be able to hang.

- **Class 1585** Painting
- **Class 1586** Pen, Pencil or Charcoal
- **Class 1587** Pastels
- **Class 1588** Collage
- **Class 1589** Colouring - Pre-drawn picture.
- **Class 1590** Artwork, not scheduled

### BEST EXHIBIT - SPECIAL NEEDS - 6 - 12 YRS

Sponsor: Paige Davison - Certificate & \$10

### BEST EXHIBIT SPECIAL NEEDS ART

Sponsor: Kirsty Kaeslin - Certificate & \$10

## COLOURING COMPETITION

The pre-drawn picture to be used for this section, can be downloaded from [www.swanhillshow.com.au](http://www.swanhillshow.com.au) or in our printed schedule available in August.

- **Class 1595** 5 Years & Under
- **Class 1596** 8 Years & Under
- **Class 1597** 12 Years & Under

## STUDENT HANDWRITING

**Head Steward:** Janette Davison 0408 363 007

**Entry Fee:** \$0.55

**Sponsor:** Janette Davison

**Prizes:** 1<sup>st</sup> Certificate & \$2, 2<sup>nd</sup> Certificate & \$1, 3<sup>rd</sup> Certificate Encouragement Awards to be given as seen fit by Judges.

**Bulk School Entries Close:** Sunday 14<sup>th</sup> September

**Bulk School Exhibits Due:** Friday 19<sup>th</sup> September

Entries must be delivered to the Show Office with Exhibit Tags attached.

**Individual Entries Close:** Friday 19<sup>th</sup> September

**Exhibits Due:** Friday 19<sup>th</sup> September

Entries must be delivered to the Show Office with Exhibit Tags attached.

**School Exhibit Collection:** Exhibits are to be collected from the Show Office between Tuesday 7<sup>th</sup> to Friday 10<sup>th</sup> October 9am – 5pm.

**Style:** Victorian Modern Cursive & NSW Foundation Regular accepted.

**Please Note:** Judge will be looking for:

- Letter formation
- Punctuation
- Overall even slope
- No rub-outs
- No spelling mistakes.
- Correct dotted thirds paper relevant to each grade MUST be used. Photocopied lines acceptable.
- Portrait or Landscape accepted.
- Use verse provided for each year level.
- Photocopied lined paper will be accepted.

- **Class 1600** Prep / Foundation

*Hickory, dickory, dock!*

*The mouse ran up the clock.*

24 mm lines/dotted lines, full sheet of A4, no margin, no framing, B or 2B pencil recommended.

- **Class 1601** Grade 1

*The clock struck one,*

*The mouse did run;*

*Hickory, dickory, dock!*

24mm lines/dotted lines, full sheet of A4 paper, no margin, no framing. HB or 2B pencil recommended.

- **Class 1602** Grade 2

*Hickety, pickety, my black hen,*

*She lays eggs for gentlemen,*

*Sometimes nine and sometimes ten,*

*Hickety, pickety, my black hen.*

18mm lines/dotted lines, 2cm margin, full sheet of A4 Paper, no framing, HB or 2B pencil recommended.

- **Class 1603** Grade 3

*Tipperty Toes, the smallest elf,*

*Sat on a mushroom by himself,*

*Playing a little tinkling tune*

*Under the big, round harvest moon.*

18mm lines/dotted lines, 2cm margin, full sheet of A4 paper, no framing, HB or 2B pencil recommended.

- **Class 1604** Grade 4

*'Tis true I have both face and hands*

*And move before your eye;*

*But, when I move my body stands,*

*And, when I stand, I lie.*

14mm lines/dotted lines, 2cm margin, full sheet of A4 paper, no framing, HB pencil or good quality ballpoint recommended.

- **Class 1605** Grade 5

*Once a Spirit of the hills*

*Where the gum-trees glisten,*

*Met the lyre-birds at their play,*

*Stopped to look and listen.*

*For their pretty minuet,*

*With its airy graces,*

*Seemed to match the lights that dance*

*In such leafy places.*

*The drumming of an army,*

*The steady soaking rain.*

9mm lines/dotted lines, 2cm margin, full sheet of A4 paper, no framing, flourished capitals accepted, good quality ballpoint recommended.



Swan Hill District Agricultural & Pastoral Society Inc.

# WHITFIELD EXCAVATIONS SWAN HILL SHOW

Friday 3<sup>rd</sup> & Saturday 4<sup>th</sup> October 2025



## • Class 1606 Grade 6

*Horns outspread and heads bent low,  
Two and two the bullocks go;  
Black and brown, and white and red,  
Heads bent low and horns outspread;  
Red and white, and brown and black,  
Curving up the rugged track;  
Plodding, patient, steady, slow,  
Two and two the bullocks go.*

9 mm lines/dotted lines, 2cm margin, full sheet of A4 paper, no framing, flourished capitals accepted, good quality ballpoint recommended.

## PHOTOGRAPHY

**Head Steward:** Paige Davison 0457 149 347

**Entry Fee:** \$1.10

**Venue:** Leisure Centre

**Prizes:** 1<sup>st</sup> Certificate \$2, 2<sup>nd</sup> Certificate \$1, 3<sup>rd</sup> Certificate  
Exhibits must be delivered to the Show Office with Exhibit Tags attached, this section will be judge prior to the Show.

**Entries Close:** Sunday 21<sup>st</sup> September.

**Exhibits Due:** Thursday 25<sup>th</sup> September.

Exhibits must be delivered to the Show Office with Exhibit Tags attached, this section will be judge prior to the Show.

**Pavilion Closes:** Please note pavilions close at 4pm Saturday. Exhibits can be collected between 5pm- 6pm.

**Uncollected Exhibits:** May be collected from the Show Office from the Tuesday following the show for two weeks.

## Read Notice to Exhibitors and Rules & Regulations in conjunction with the following Section Rules:

- Photos MUST be a maximum of 15 x 21 cm (6" x 8 ") unless otherwise stated.
- Photographs should be mounted on BLACK or WHITE card only with a maximum border of 3cm.
- No framed photographs.
- This is an amateur competition, open to all ages.
- Professional photographers are not eligible to enter. A Professional is someone that derives the greater percentage of their income as a Photographer.
- All work is to have been completed in the last 12 months prior to its entry at a local Show
- All exhibits must be photographed by the exhibitor.
- All entries are to be plainly marked with the name and address of the exhibitor on the BACK of the photograph. Please do not use permanent marker.
- Maximum of 2 prints may be entered per class.

## VAS Ltd COMPETITIONS



Winners of these Classes will compete at 2026 Group Final in Swan Hill, Sunday 3<sup>rd</sup> May. Winners at the Group Final will then compete at the 2026 VAS Ltd Finals in Wangaratta Sunday 21<sup>st</sup> June. Rules for these Classes are as follows.

- **Class 1700 VAS' Ltd Architecture - Bridge, Building or Structure in Australia.**

## VAS Ltd Rules and Regulations:

1. Unframed.
2. Print no larger than 20cm by 30cm.
3. Must be mounted on thick card (mount no larger than 3cm).
4. Each exhibit entered must be the bona fide work of the exhibitor.
5. **Professionals are not eligible**, which is defined as someone that works professionally or derives the greater percentage of their income in that craft, art form or technique.
6. All work is to have been completed in the last twelve (12) months prior to its entry at a local Show.
7. The competition follows the three levels of competition: Show Level, Group Level and State Level.
8. An exhibit having won at a Show will compete at the 2026 Group Final. The winning exhibit at the Group Final will then compete in the State Final at the 2026 Melbourne Royal Show.
9. An exhibitor having won at Show Level is not eligible to enter the VAS Photography competition at any other Show until after the Group Final judging.
10. An exhibitor is only eligible to represent one Group in the State Final.
11. If for any reason a winner is unable to compete at Group or State Final Level, then the second placegetter is eligible to compete.
12. An exhibit having won at State Final is no longer eligible to compete in the competition.
13. If an exhibitor is found to have won more than one Group Final the exhibitor must forfeit/refund all prizes and will be disqualified from exhibiting for 12 months.

State Final Prizes: First: \$70 & VAS State Final Trophy, Second: \$20, Third: \$10

## NDAS COMPETITIONS



Winners and second place of these Classes will compete at 2026 Group Final in Swan Hill, Sunday 3<sup>rd</sup> May. Rules for these classes follow.

- **Class 1701 NDAS - Community Event**  
Black and white or coloured print.  
Maximum size -20cm x 30cm. (8" x 12")  
Mounted on cardboard with edge/border up to 3cm

## NDAS Regulations:

1. The entrant must follow the competition specifications provided.
2. Each entry must be the bona fide work of the exhibitor.
3. Open to competitors of any age or gender.
4. Professionals are not eligible, which is defined as someone that works professionally or derives the greater percentage of their income in that craft, art form or technique.
5. An exhibitor having won first or second at their local Show will be eligible for the 2026 Group Final.





Swan Hill District Agricultural & Pastoral Society Inc.

# WHITFIELD EXCAVATIONS SWAN HILL SHOW

Friday 3<sup>rd</sup> & Saturday 4<sup>th</sup> October 2025



6. If competing at multiple shows you can only represent one show at the group finals in the respective section that you were either first or second placegetter which must be the first show within the Show season that you entered.

7. For Group Final photos must have hooked Velcro tabs on the back of the mounting suitable to attach to a carpet display wall.

## OPEN PHOTOGRAPHY

Colour and black & white prints accepted.

- **Class 1705** Open Feature - Portrait or Group of People  
Sponsor: Imogen Photography - 1<sup>st</sup> \$15, 2<sup>nd</sup> \$5.
- **Class 1706** Monochrome - any subject  
A photograph or picture developed or executed in black and white or in varying tones of only one colour.
- **Class 1707** Nature Study
- **Class 1708** Landscape or Panoramic  
Max print size accepted is 15cm x 45cm (16" x 18")
- **Class 1709** Night Lights  
Sponsor - Southern Cross Fireworks - 1<sup>st</sup> \$20, 2<sup>nd</sup> \$10.
- **Class 1710** Sunrise/Sunset
- **Class 1711** Series of 3 Photographs  
Mounted on backing no larger than 30 x 40cm.  
Photo sizes as appropriate to backing.
- **Class 1712** Close Up
- **Class 1713** Reflections
- **Class 1714** My Mallee - Photo representing theme.
- **Class 1715** All Creatures Great & Small
- **Class 1716** Structure
- **Class 1717** Artistically Enhanced Photo
- **Class 1718** Event/Special Occasion
- **Class 1719** Any Other Subject

### BEST EXHIBIT OPEN PHOTOGRAPHY

Sponsor: Kara Wilson – Certificate & Prize

## NOVICE OPEN

Open to people learning photography for less than two years, and who have never won a first prize at this or any other show.

Colour and Black & White prints accepted for all sections

- **Class 1720** Nature Study
- **Class 1721** Portrait or Group of People
- **Class 1722** Structure
- **Class 1723** Any Other Subject

### BEST EXHIBIT NOVICE PHOTOGRAPHY

Sponsor: Kennedy's Showcase Jewellers  
Certificate & Voucher \$20

## SPECIAL NEEDS

Open to Adults with special needs

- **Class 1725** Nature Study
- **Class 1726** Portrait or Group of People
- **Class 1727** Animals
- **Class 1728** Any Other Subject

### BEST EXHIBIT PHOTOGRAPHY SPECIAL NEEDS

Sponsor: Ornamental Glass - Certificate & \$20

### PHOTOGRAPHY JUDGES CHOICE

Sponsor: Southern Cross Fireworks  
Certificate & \$30

## JUNIOR PHOTOGRAPHY

Colour and Black & White prints accepted for all sections.

**Entry Fee:** \$0.55

**Prizes:** 1<sup>st</sup> Certificate & \$2, 2<sup>nd</sup> Certificate & \$1, 3<sup>rd</sup> Certificate

**Individual Entries Close:** Sunday 21<sup>st</sup> September.

**Exhibits Due:** Thursday 25<sup>th</sup> September.

Exhibits must be delivered to the Show Office with Exhibit Tags attached, this section will be judge prior to the Show.

**Venue:** Leisure Centre

**Collection of Exhibits:** Photography exhibits are **NOT** to be collected on show day. Photography exhibits may be collected from the Show Office from the Tuesday following the show for two weeks.

**Read Notice to Exhibitors and Rules & Regulations in conjunction with the following Section Rules:**

- Photos **MUST** be a maximum of 15 x 21 cm or 6" x 8", unless otherwise stated.
- Photographs should be mounted on BLACK or WHITE card only with a maximum border of 3cm.
- No framed photographs.
- This is an amateur competition, open to all aged 18 yrs & Under on the day of the Show.
- Professional photographers are not eligible to enter. A Professional is someone that derives the greater percentage of their income as a Photographer.
- All work is to have been completed in the last 12 months prior to its entry at a local Show.
- All exhibits must be photographed by the exhibitor.
- All entries are to be plainly marked with the name and address of the exhibitor on the **BACK** of the photograph. Please do not use permanent marker.
- Maximum of 2 prints may be entered per class.

## VAS LTD JUNIOR PHOTOGRAPHY COMP



Winners of these Classes will compete at 2026 Group Final in Swan Hill, Sunday 3<sup>rd</sup> May. Winners at the Group Final will then compete at the 2026 VAS Ltd Finals in Wangaratta Sunday 21<sup>st</sup> June. Rules for these Classes are as follows.

- **Class 1750** VAS - 'Architecture - Bridge, Building or Structure in Australia'.

### VAS Ltd Rules and Regulations:

1. Exhibitors to be aged under 18 years on the day of their local show.
2. Unframed.
3. Print no larger than 20cm by 30cm, (8" x 12").
4. Must be mounted on thick card (mount no larger than 3cm).



Swan Hill District Agricultural & Pastoral Society Inc.

# WHITFIELD EXCAVATIONS SWAN HILL SHOW

Friday 3<sup>rd</sup> & Saturday 4<sup>th</sup> October 2025



5. Each exhibit entered must be the bona fide work of the exhibitor.
6. **Professionals are not eligible**, which is defined as someone that works professionally or derives the greater percentage of their income in that craft, art form or technique.
7. All work is to have been completed in the last twelve (12) months prior to its entry at a local Show.
8. The competition follows the three levels of competition: Show Level, Group Level and State Level.
9. An exhibit having won at a Show will compete at the 2026 Group Final. The winning exhibit at the Group Final will then compete in the State Final at the 2026 Melbourne Royal Show.
10. An exhibitor having won at Show Level is not eligible to enter the VAS Photography competition at any other Show until after the Group Final judging.
11. An exhibitor is only eligible to represent one Group in the State Final.
12. If for any reason a winner is unable to compete at Group or State Final Level, then the second placegetter is eligible to compete.
13. An exhibit having won at State Final is no longer eligible to compete in the competition.
14. If an exhibitor is found to have won more than one Group Final the exhibitor must forfeit/refund all prizes and will be disqualified from exhibiting for 12 months.

State Final Prizes: First: \$30 & VAS State Final Trophy,  
Second: \$15, Third: \$10

## NDAS JUNIOR PHOTOGRAPHY COMP



Winners and second place of these Classes will compete at 2026 Group Final in Swan Hill, Sunday 3<sup>rd</sup> May. Rules for these classes follow.

- **Class 1751 NDAS – Flying**  
Black and white or coloured print.  
Maximum size -20cm x 30cm. (8" x 12")  
Mounted on cardboard with edge/border up to 3cm

### NDAS Regulations:

1. The entrant must follow the specifications provided.
2. Each entry must be the bona fide work of the exhibitor.
3. Open to competitors of any age or gender under 18 years as of the date of the local Show.
4. An exhibitor having won first or second at their local Show are eligible for entry to the 2026 Group Final.
5. If competing at multiple shows you can only represent one show at the group finals in the respective section that you were either first or second placegetter which must be the first show within the Show season that you entered.
6. For Group Final photos must have hooked Velcro tabs on the back of the mounting suitable to attach to a carpet display wall.

## 18 YEARS & UNDER

- **Class 1752** Feathers/Fur
- **Class 1753** Nature Study
- **Class 1754** Landscape/Waterscape
- **Class 1755** Sunrise/Sunset
- **Class 1756** Portrait or Group of People
- **Class 1757** Any Other Subject

### BEST EXHIBIT JUNIOR PHOTOGRAPHY 18YRS & UNDER

Sponsor - Southern Cross Fireworks - Certificate & \$10

## 15 YEARS & UNDER

- **Class 1758** Feathers/Fur
- **Class 1759** Nature Study
- **Class 1760** Landscape/Waterscape
- **Class 1761** Sunset/Sunrise
- **Class 1762** Portrait or Group of People
- **Class 1763** Any Other Subject

### BEST EXHIBIT JUNIOR PHOTOGRAPHY 15 YRS & UNDER

Sponsor - Southern Cross Fireworks - Certificate & \$10

## 12 YEARS & UNDER

- **Class 1764** Animals/Birds
- **Class 1765** Nature Study
- **Class 1766** Landscape/Waterscape
- **Class 1767** Portrait or Group of People
- **Class 1768** Any Other Subject

### BEST EXHIBIT JUNIOR PHOTOGRAPHY 12 YRS & UNDER

Sponsor - Southern Cross Fireworks - Certificate & \$10

## 9 YEARS & UNDER

- **Class 1769** Animals/Birds
- **Class 1770** Nature Study
- **Class 1771** Landscape/Waterscape
- **Class 1772** Portrait or Group of People
- **Class 1773** Any Other Subject

### BEST EXHIBIT JUNIOR PHOTOGRAPHY 9 YRS & UNDER

Sponsor – Jan Sinclair - Certificate & \$10

## 6 YEARS & UNDER

- **Class 1774** Animals/Birds
- **Class 1775** Nature Study
- **Class 1776** Portrait or Group of People
- **Class 1777** Any Other Subject

### BEST EXHIBIT JUNIOR PHOTOGRAPHY 6 YRS & UNDER

Sponsor – Paige Davison - Certificate & \$10

## SPECIAL NEEDS

- **Class 1778** Animals/Birds
- **Class 1779** Nature Study
- **Class 1780** Portrait or Group of People
- **Class 1781** Any Other Subject



Swan Hill District Agricultural & Pastoral Society Inc.

# WHITFIELD EXCAVATIONS SWAN HILL SHOW

Friday 3<sup>rd</sup> & Saturday 4<sup>th</sup> October 2025



## BEST EXHIBIT IN SPECIAL NEEDS JUNIOR PHOTOGRAPHY

Sponsor: Aspire Jewellery - Certificate & \$20 Voucher

## JUNIOR PHOTOGRAPHY JUDGES CHOICE

Sponsor - Southern Cross Fireworks - Certificate & \$30

## BEEF HOOF & HOOK

**Enquiries:** Scott Bruton 0437 852 239

**Entries Close:** Sunday 28th September

**Entry Fee:** \$27.50 per head of cattle (incl. entry in both Hoof & Hook classes).

**Event Date:** Sunday 12th October

**Sponsors:** Woodward Foods, Swan Hill Selling Agents Association, Elsteel and Roofing P/L, Vernon's Steel, Your Regional Butcher, Charles L King & Co. First National, Arnold Family Butcher, Ag Warehouse, Rigley, Black Diamond Speckled Park (Cartage).

**Venues:** All exhibits to be delivered to Swan Hill Abattoirs, River Rd, Swan Hill from 9am -11am Sunday 12<sup>th</sup> October. Cattle will be weighed from 10am.

**Hoof Judging:** Starting at 11.30am at the Swan Hill Abattoirs.

**Classes:** Determined after weighing on Sunday. Cattle are classed according to their live weight categories. Fat measurements are taken at P8 (rump) & rib sites (Rib fat taken between the 10<sup>th</sup> & 11<sup>th</sup> rib on the carcass). Points are gained or lost if they do not fall into the following recommendations within their live weight classes.

### Special Regulations:

- All entrants must compete in both Hoof & Hook sections.
- Heifers or steers are eligible.
- All entrants must be traceable, with all entrants having owner I.D. e.g. Ear tag with Exhibitors Number.
- All entrants must have NLIS tag in accordance with the Dept of Agriculture. No HGP.
- All horned stock must be DEHORNED.
- Vendors must complete a National Vendor's declaration form and Woodward Foods Recipient Created Tax Invoice available online when submitting entry. [www.swanhillshow.com.au](http://www.swanhillshow.com.au)
- All exhibitors shall state on their entry form - breed, cross **breeds or mixture of each animal, so far as is known.**
- The name and breed of sire and dam if known. Any male animal, which in the opinion of the chief steward, shows secondary sex characteristics will be deemed to be a bull and will not be eligible for an award.
- Subject only to general regulations, the chief steward reserves the right to make such determination and directions on any matter in relation to the conduct of the competition as they may think fit, which determinations and decisions shall be final and not be called into any question in any manner, or in any proceedings whatsoever.
- Carcasses will be judged using the Ausmeat Chiller Assessment system & sold in accordance with price grid on the day. Carcasses will be assessed at Swan Hill Abattoirs, River Road, Swan Hill on Sunday 12<sup>th</sup> October 2025.
- Public are not permitted due to facility health and safety regulations.

• All judging for both on Hoof and on Hook will occur at the Swan Hill Abattoirs.

• Presentation of trophy & prize money for on hoof & on hook classes will be awarded at a later date, TBA.

• ABN to be supplied.

## HOOF CLASSES

- **Class 2500** Hoof Class Light 300-399kg
- **Class 2501** Hoof Class Medium, 400-499kg
- **Class 2502** Hoof Class Heavy, 500-600k

### CHAMPION BEAST ON THE HOOF

Ron Hoare Memorial Perpetual Trophy  
Trophy & Sash & \$100.00

### RESERVE CHAMPION BEAST ON THE HOOF

Sash & \$75.00

**JJ Tilbrook Pty Ltd**  
**Livestock & General Carrier**  
**0428 514 885**

## HOOK CLASSES

- **Class 2503** Light, Rib Fat 5-8mm / P8 Fat 6-10mm
- **Class 2504** Medium, Rib Fat 6-10mm / P8 Fat 3-13mm
- **Class 2505** Heavy, Rib Fat 8-13mm / P8 Fat 12-17mm

### CHAMPION BEAST ON HOOK

Perpetual Trophy Sponsor: Sutton Farm Shorthorn Stud  
Trophy & Rosette & \$350.00

### RESERVE CHAMPION BEAST ON HOOK

Rosette & \$200.00

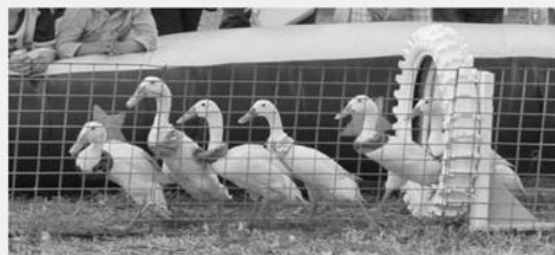
**The Swan Hill Agricultural & Pastoral Society Inc.**  
**thank the following supporters:**

Andrew Peace Wines	Bakker & Glen
Eyles Engineering	Poole's Accountants
Heil Engineering Consultant	Nutri Green
Swan Hill Windows & Kitchens	Logan & Hall
Blue Sky Outdoor Experts	GMG Accounting
Murray Valley Lasers Pty Ltd	Microw Developments
Nuggets Engineering	

WHITFIELD EXCAVATIONS

FRI 3 & SAT 4 OCT

# SWAN



# HILL

# SHOW

## WHAT'S ON AROUND THE GROUNDS

RACING COMEDY DUCKS

BARN BABIES - ANIMAL NURSERY

WOOD CHOPPING

HORSE & MINI HORSE EVENTS

FREE CHILDREN'S ACTIVITIES

YARD DOG TRIALS

ANIMALS OF MAGIC MOUNTAIN

POULTRY, PIGEONS & CAGED BIRDS

AGRICULTURAL MACHINERY

CAMEL RIDES .... AND MORE!



## FEATURING ON THE STAGE

- ELIAS LANYON
- PERFORMANCES FROM LOCAL DANCE GROUPS
- SWAN HILL BAND
- GOLDEN CITY PIPE BAND
- HAPPY WANDERERS



## SWAN HILL SHOW COLOURING COMPETITION

### 5 Years & Under

Name: \_\_\_\_\_ Age: \_\_\_\_\_

**Entries Close:** 5pm, Friday 26<sup>th</sup> September 2025

**PRIZES:** 1st- \$15, 2nd- \$10, 3rd- \$5.

Colour in the picture, fill in your details and deliver to the  
Swan Hill Show Office,  
106 McCallum Street, Swan Hill.

Winners will be contacted by the phone number supplied below.  
There is no entry fee associated with this competition.

Contact Number: \_\_\_\_\_



## SWAN HILL SHOW COLOURING COMPETITION

### 8 Years & Under

Name: \_\_\_\_\_ Age: \_\_\_\_\_

**Entries Close:** 5pm, Friday 26<sup>th</sup> September 2025

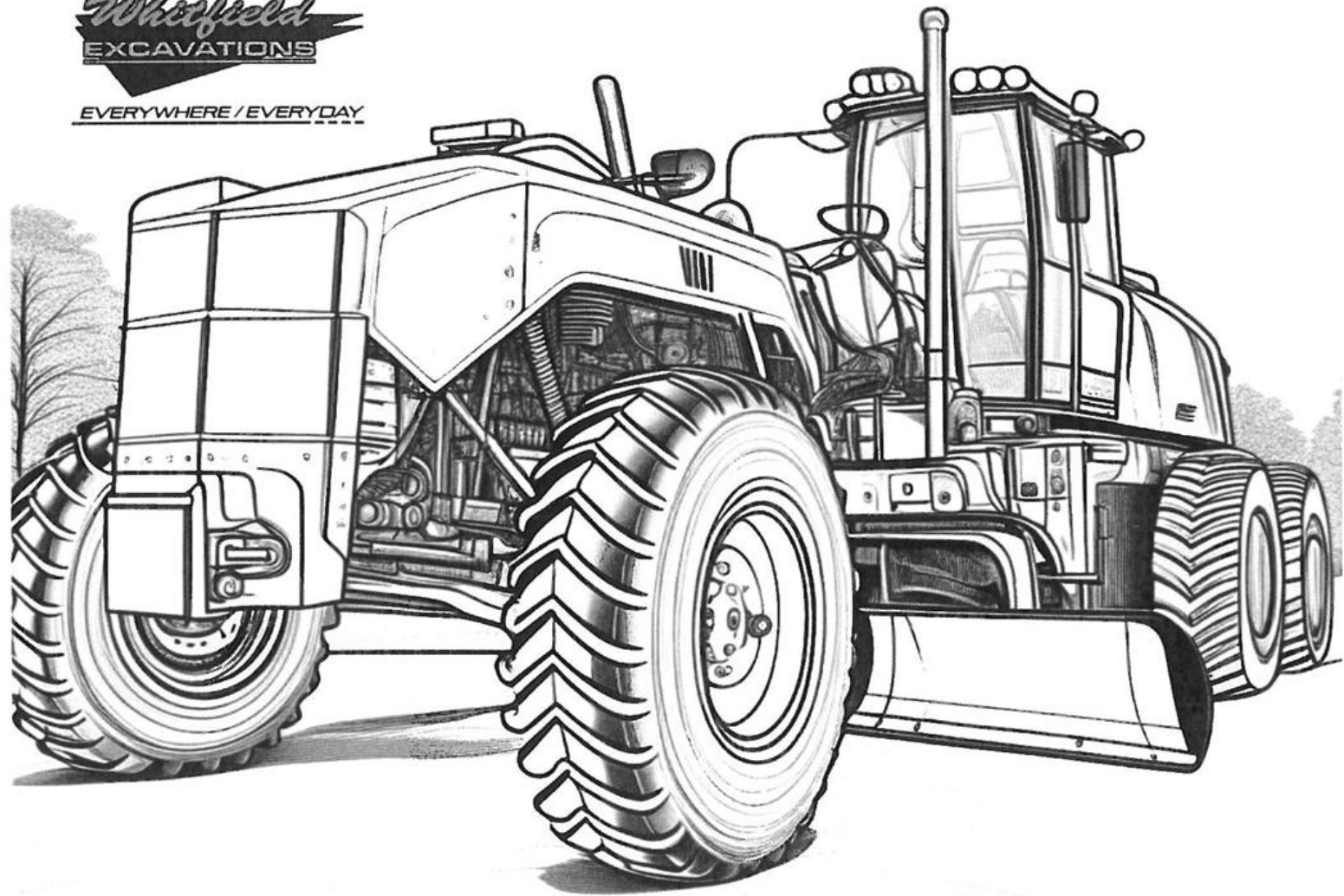
**PRIZES:** 1st- \$15, 2nd- \$10, 3rd- \$5.

Colour in the picture, fill in your details and deliver to the  
Swan Hill Show Office,  
106 McCallum Street, Swan Hill.

Winners will be contacted by the phone number supplied below.

There is no entry fee associated with this competition.

Contact Number: \_\_\_\_\_



## SWAN HILL SHOW COLOURING COMPETITION

### 12 Years & Under

Name: \_\_\_\_\_ Age: \_\_\_\_\_

**Entries Close:** 5pm, Friday 26<sup>th</sup> September 2025

**PRIZES:** 1st- \$15, 2nd- \$10, 3rd- \$5.

Colour in the picture, fill in your details and deliver to the  
Swan Hill Show Office,  
106 McCallum Street, Swan Hill.

Winners will be contacted by the phone number supplied below.  
There is no entry fee associated with this competition.

**Contact Number:** \_\_\_\_\_



# BRONZE SPONSORS



**Swan Hill &  
Kerang Toyota**  
Where the relationship is more  
important than the sale



# BRONZE SPONSORS



**are-able**



**JOHN H SCARESBOOK  
ACCOUNTANTS & BOOKKEEPERS**

**McLardyMcShane**  
INSURANCE & FINANCIAL SERVICES

# SILVER SPONSORS



# HOLTS

Since 1926

Mitsubishi, Hyundai and Isuzu Ute



BILLY CHARNOCK ELECTRICAL



Swan Hill Windscreens  
**COLLISION REPAIR CENTRE**

# GOLD SPONSORS

## The Guardian



Swan Hill  
Community U



MURRAY MALLEE  
**TRAINING**  
CO. LTD.



**AgLink**  
ART TRAIL OF

**Tradelink**

**» Traction AG**



**SWAN HILL**  
*Region* HEART OF THE MURRAY  
SWAN HILL INCORPORATED

**2025**

**PLATINUM SPONSOR**

**Thanks to our wonderful  
Platinum Sponsor  
for their many years  
of support.**

