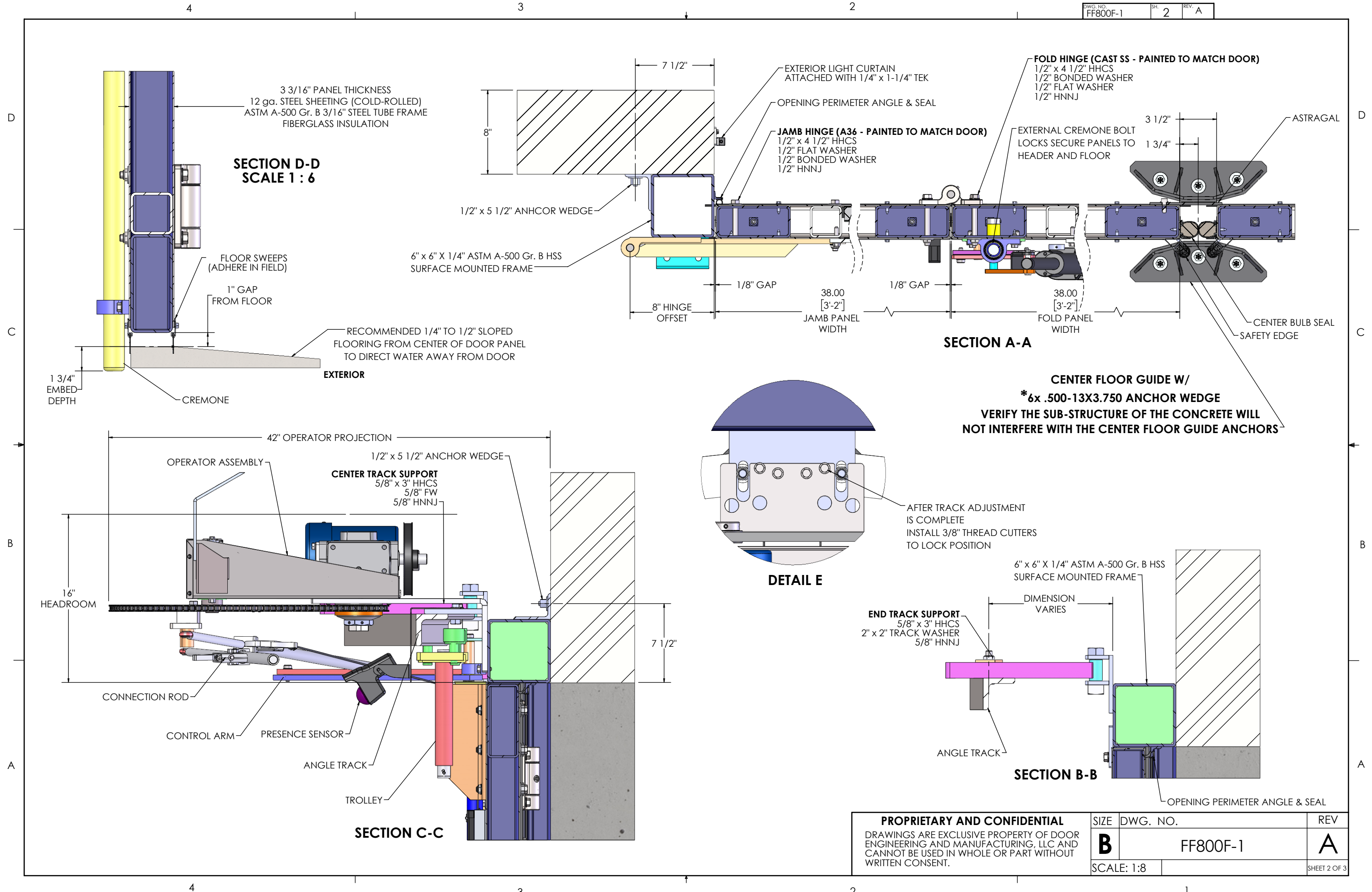


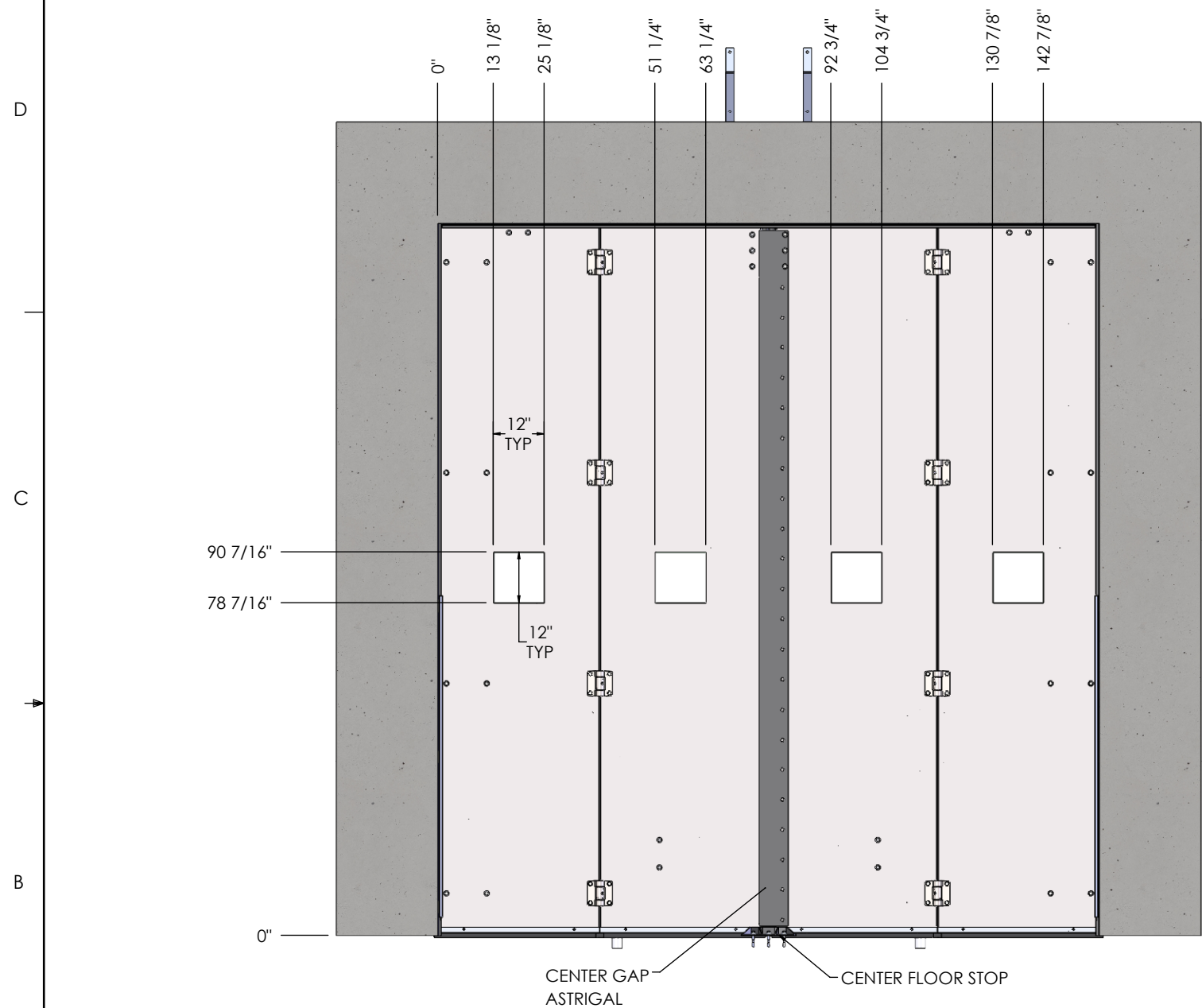
DOOR QUANTITY: X

DRAWINGS ARE THE EXCLUSIVE PROPERTY OF DOOR ENGINEERING AND MANUFACTURING, LLC AND CANNOT BE USED IN WHOLE OR PART WITHOUT WRITTEN CONSENT.

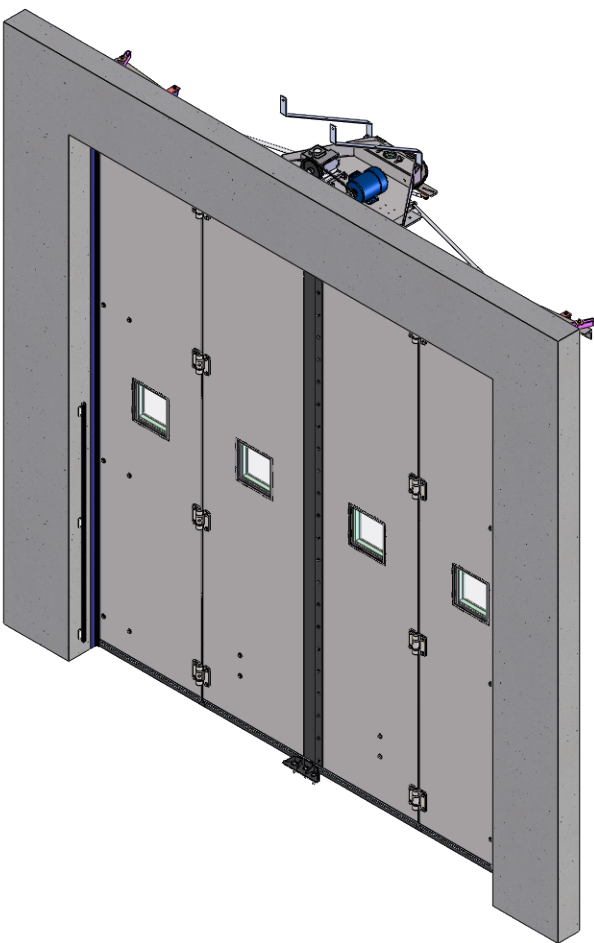
MATERIAL		THICKNESS	
SEE PARTS LIST		N/A	
UNLESS OTHERWISE SPECIFIED: DIMENSIONS ARE IN INCHES TOLERANCES: ANGULAR: ± 2° X.X = ± .1 X.XX = ± .03 X.XXX = ± .015		DO NOT SCALE DRAWING THIRD ANGLE PROJECTION	
NAME		DATE	
DRAWN BY XXX		XX/XX/XXXX	
CHECKED BY		SCALE: 1:36	
TITLE:		FF800	
SIZE		DWG. NO.	
B		FF800F-1	
REV		A	
MASS: 5806.16		SHEET 1 OF 3	







EXTERIOR ELEVATION



NOTES:

1. FACTORY FINISH: COMPLETED DOOR SECTIONS, HINGES, SURFACE MOUNTED FRAME AND WINDOW FRAMES (WHERE APPLICABLE) TO BE EPOXY PRIMED AND POLYURETHANE FINISH PAINTED. CUSTOMER COLOR SPECIFIED IS **RAL #XXXX**.
2. OPERATOR COMPONENTS, TRACK AND LINKAGE TO BE POWDERCOATED ANSI GRAY.
3. CAULK ALL INTERIOR AND EXTERIOR GLAZING AND FRAMES. (CAULK PROVIDED BY OTHERS)
4. CAULK SURFACE MOUNTED FRAME TO WALL (IF APPLICABLE). (CAULK PROVIDED BY OTHERS)
5. GLAZING SHALL BE 1 1/4" CLEAR, POLYCARBONATE ICC-500 RATED SAFETY GLASS. GLASS SHALL BE SHIPPED SEPARATE TO SITE AND INSTALLED BY DOOR INSTALLER.
6. FIELD VERIFY OPENING PRIOR RELEASE TO PRODUCTION.

***DOOR DESIGNED FOR 250PSF WINDLOAD FOR FEMA 361 AND ICC-500**
***DOOR WILL OPEN OR CLOSE IN APPROXIMATELY 7 SECONDS**

PROPRIETARY AND CONFIDENTIAL

DRAWINGS ARE EXCLUSIVE PROPERTY OF DOOR
ENGINEERING AND MANUFACTURING, LLC AND
CANNOT BE USED IN WHOLE OR PART WITHOUT
WRITTEN CONSENT.

SIZE DWG. NO.

B FF800F-1

SCALE: 1:36

REV

A

SHEET 3 OF 3