

4

3

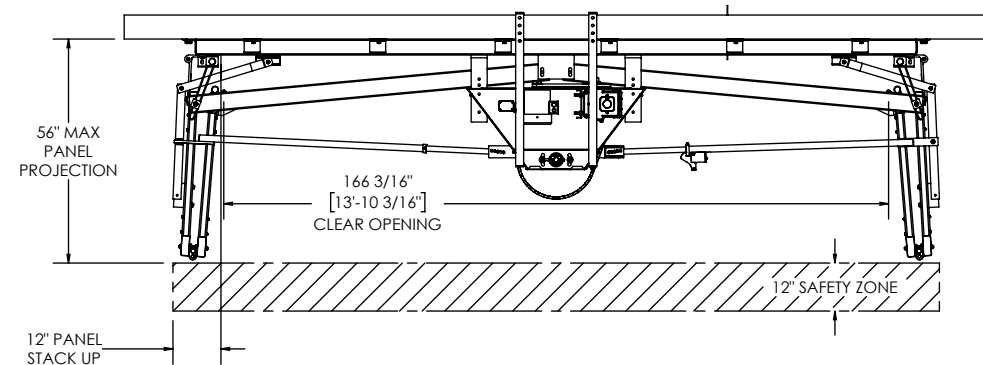
2

DWG. NO. FF200-1

SH. 1

REV. 1

D



2" PANEL THICKNESS
ASTM A500 Gr. B 1 1/4" STEEL TUBE FRAME
CR A1008 14 ga STEEL SHEETING
FIBERGLASS BATT. INS.

FOLD HINGE

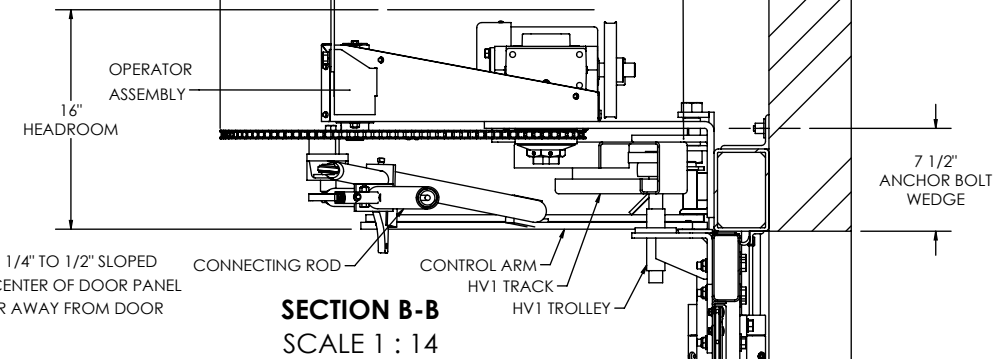
SECTION C-C
SCALE 1 : 8

1 3/8" FLOOR GAP

RECOMMENDED 1/4" TO 1/2" SLOPED
FLOORING FROM CENTER OF DOOR PANEL
TO DIRECT WATER AWAY FROM DOOR

OPERATOR SUPPORT STRAP
FORM AND MOUNT IN FIELD

CENTER TRACK SUPPORT
5/8" x 3" HHCS
5/8" FW
5/8" HNNJ

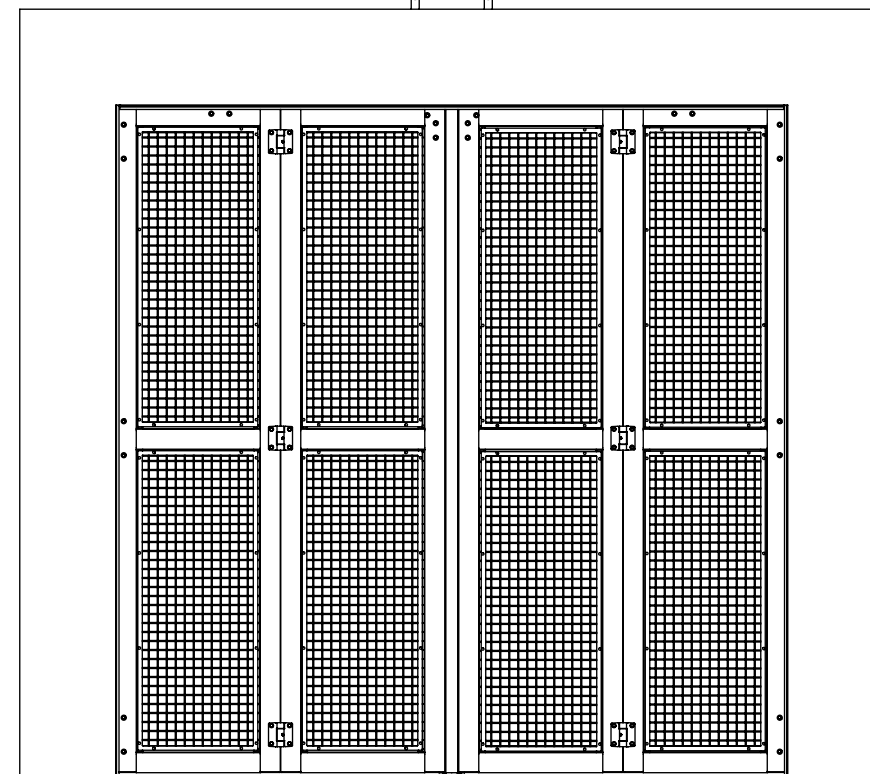
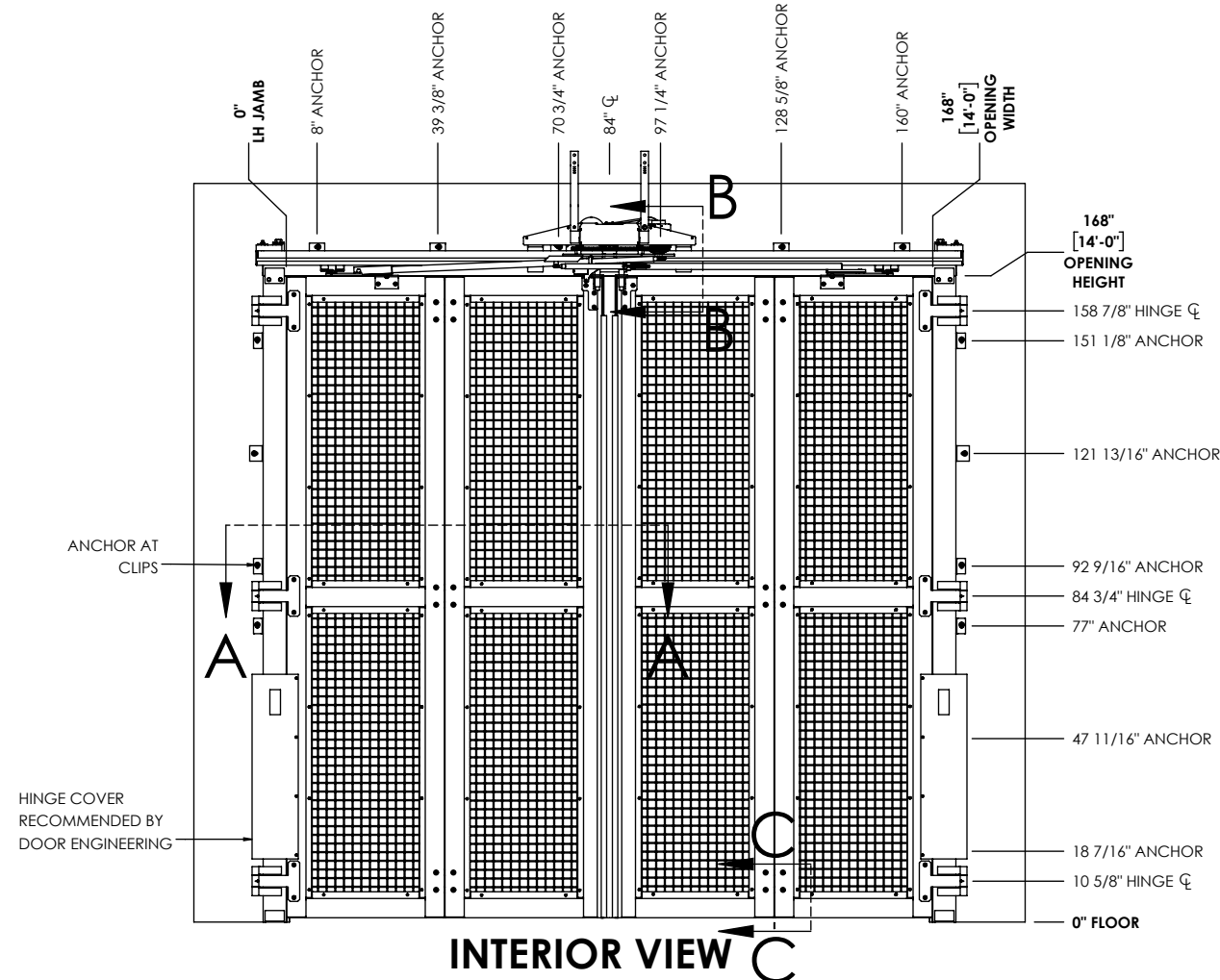


SECTION B-B
SCALE 1 : 14

C

B

A



TYPICAL DETAILS FOR 14'x14'
DESIGNED FOR 25 PSF WINDLOADS
CONSULT MANUFACTURER FOR HIGHER
WINDLOADS, ALTERNATE SIZES, AND LAYOUTS

DRAWINGS ARE THE EXCLUSIVE PROPERTY OF DOOR ENGINEERING AND MANUFACTURING, LLC AND CANNOT BE USED IN WHOLE OR PART WITHOUT WRITTEN CONSENT.

MATERIAL SEE PARTS LIST

THICKNESS N/A

UNLESS OTHERWISE SPECIFIED:
DIMENSIONS ARE IN INCHES
TOLERANCES:
ANGULAR: ± 2°
X.X = ± .1
X.XX = ± .03
X.XXX = ± .015

DO NOT SCALE DRAWING
THIRD ANGLE PROJECTION

TITLE: FourFold 200 Template

NAME DATE

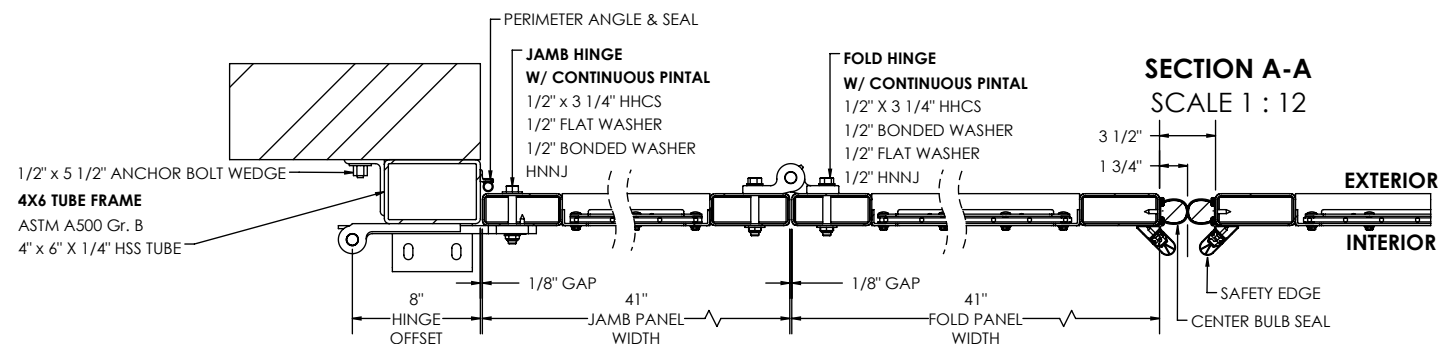
DRAWN BY DSM 12/26/2018

CHECKED BY

SIZE DWG. NO. REV

B FF200-1 1

SCALE: 1:48 MASS: 2584.84 SHEET 1 OF 1



4

3

2

1