



*Bildspec Series 100 Konnect™
Double Glazed Acoustic Operable Walls*



Introduction

Bildspec's Series 100 Konnect™ combines the elegance of glass, with the strength and reliability of a Bildspec Operable wall.

Combined with an unobtrusive panel frame, Series 100 Konnect™ enables maximum visual connectivity between spaces whilst preserving acoustic separation. For internal applications only, the Bildspec Series 100 Konnect™ Operable Wall System is 100mm thick, uses 6.38mm laminated glass (or combinations up to 10.50mm for higher acoustic requirements) and is dry glazed for cost effective maintenance in accordance with AS 1288.

The standard acoustic seal configuration is: fixed dual line triple finger sweep seals top and bottom (offering the smallest frame), however

mechanical retractable floor seals can be optioned to enhance ease of movement and acoustic performance (please note: retractable floor seals require a slightly deeper bottom rail to incorporate the mechanism).

The Bildspec Series 100 Konnect™ (double glazed) system uses the same vertical stile profiles as Bildspec Series 100 (solid) operable wall panels. This provides greater flexibility in design and operation by enabling both double glazed and solid panels within the one operable wall system.

Spatial Flexibility, coupled with visual connectivity and impressive acoustic separation, is key to Bildspec's Series 100 Konnect™ double glazed acoustic operable wall system.



How to Specify Bildspec Series 100 Konnect™

Step 1. Acoustic Performance (Rw):

This is the most important part of an operable wall specification. Please consider that selecting high acoustic ratings may not be necessary for your project or, that the surrounding structure (periphery) may not support it structurally or acoustically. Selecting higher than required acoustic ratings adds to project costs and adds weight to the overall system and components.

Bildspec's range has been tested to Australian Standard AS1191-2002 (R2016) and AS/NZ ISO 717-1 (20040). The following is a guide to selecting what is appropriate for your project from our range:

Rw42 Normal speaking voices intelligible, generally suited to lower end applications where acoustic control is not required and the operable wall is to act more like a physical divide.

Rw45 Normal speaking voices somewhat intelligible, you can understand some words and tonality. Suited to applications like school classrooms (EFSG standard), smaller 4–6 people meeting rooms, church halls and aged care facilities.

Rw47 Normal speaking voices barely intelligible, suited to applications like 6–10 people meeting rooms, school halls, church halls and aged care facilities

Rw49 Raised voices barely intelligible, suited to applications such as boardrooms, larger 8–12 people meeting spaces, smaller conference centres and hotel function rooms.

Series 100 Konnect™ Double Glazed Acoustic Operable walls are available in,

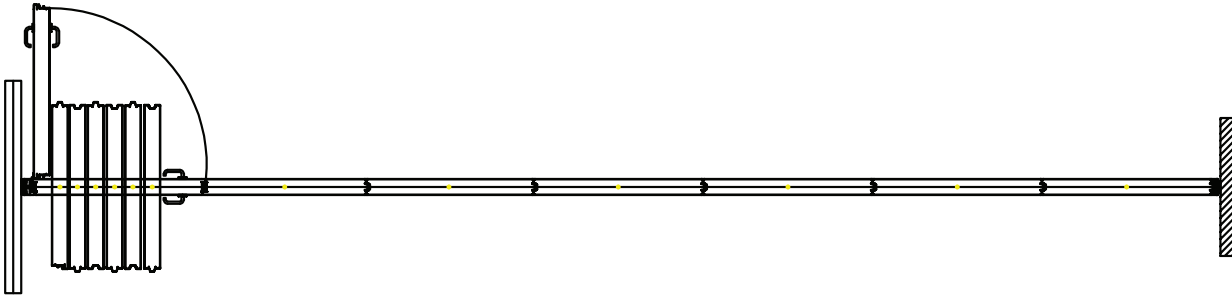
Rw46 1 x 6.38mm + 1 x 6.38mm (both laminated glass) = 42kg/sqm.

Rw48 1 x 10.38mm laminated glass + 1 x 10.5mm Hush glass = 60kg/sqm.

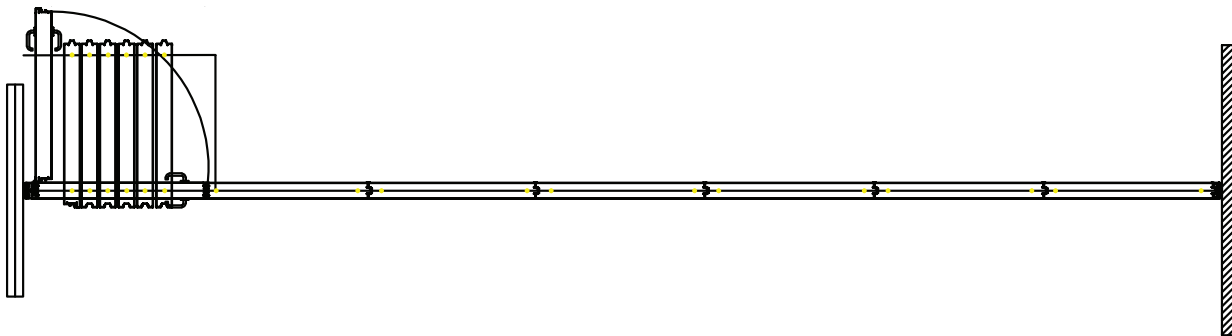
Step 2. Stacking Arrangement:

The next selection for your project is to choose how and to where the panels will stack away. There are 3 standard types to choose from **centre stack, side stack and remote stack**:

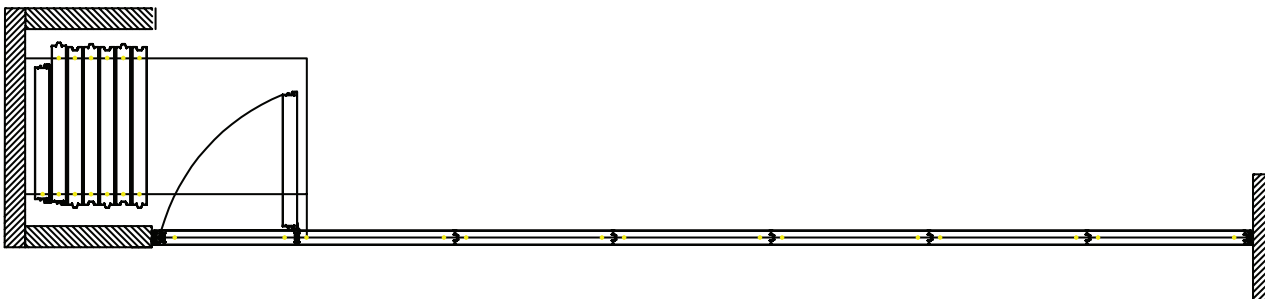
Centre Stack The simplest and most cost-effective stacking solution, featuring a single straight line of overhead track. Panels pivot perpendicular to the track as they fold and are typically hinged in pairs for added stability. Each panel is suspended from four bearing trolleys, allowing the operator to glide the panels into position and transform the space as needed. The carriers (trolleys) are centrally mounted, meaning 50% of each folded panel sits on either side of (and perpendicular to) the track's centreline. While folded panels can stack anywhere along the main track run, they are most commonly stacked at one or both ends. The head track requires continuous overhead support, such as a suitable concrete slab or steel beam.



Side Stack This configuration features a main straight line of track, with the stacking area located to one side of the track in an 'h'-shaped layout. Panels travel along the main track and turn perpendicular as they enter the stacking bay. The carriers (trolleys) move approximately 95% off the track's centreline, with only one carrier remaining on the main track run.*



Remote Stack Like Side Stack, the Remote Stack configuration also includes a main straight line of track, but with the stacking area positioned completely off to one side in a 'one-handed trident' or pitchfork-shaped layout. Panels travel along the main track and turn perpendicular as they enter the stacking bay with both carriers (trolleys) moving 100% off the track's centreline. Panels typically stack within a formed pocket or dedicated stacking bay.*



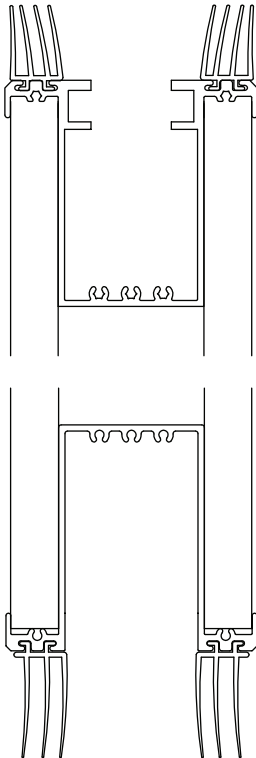
**For both Side and Remote Stack systems: typically, diverters guide the panels smoothly into and out of the stacking bays. Bildspec offers two track systems: the premium Number One Track and Curves, and the cost-effective Number Two Track, which uses high and low rollers to carry the panels. Both main and stack tracks require continuous overhead support, such as a suitable concrete slab or steel beam.*

Step 3. Seals – Top and Bottom:

Our systems incorporate a number of seal configurations dependant on the site conditions and the application.

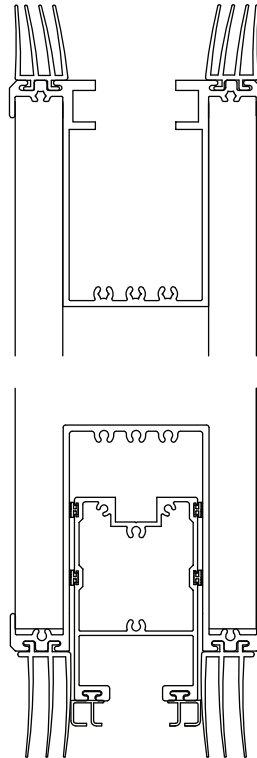
Type 1 Sweep / Sweep

Our standard offering: a dual line of fixed triple finger sweep seals top and bottom, which are trimmed to accommodate floor level inconsistencies. Whilst Type 1 seals are a cost-effective option, they can cause friction when the panels travel over the floor's high points, which in turn may make the panels more challenging to move.



Type 4 Sweep / Sweep & Retractable

For Rw48, Bildspec recommends Type 4 seals: fixed dual line triple finger sweep seals at the top, plus a combination of fixed dual line triple finger sweep seals and mechanical retractable seals to the bottom. This arrangement provides the enhanced manoeuvrability of a retracting bottom seal while the inclusion of dual line triple finger sweep seals achieves a stronger sound barrier.



At Bildspec, customers are at the core of what we do. Here are just some of our service and customer care commitments:

- Bildspec is an Australian-owned and operated company, based at our purpose-built facility in Sydney.
- Designed, engineered, manufactured and tested in Australia to ensure robust quality and superior acoustic performance, all Bildspec products are covered by an industry-leading 2-year conditional warranty, with optional extended warranty/service agreements available.
- We offer early design stage consultation for space planning and costing.
- Handover and demonstration to the end user is offered on all our jobs.
- Our operable wall systems have been designed to move easily with the aid of diverters to ensure the movement of the panels is as smooth as possible .
- We have one of the shortest lead-times on the market and deliver to agreed timelines.
- Bildspec have implemented a continuous improvement program aided by customer feedback, design improvements and continuous laboratory testing.
- Our service department provides a quick response to any service needs through our highly trained service technicians.



Contact us today!

Phone **1300 967 672** Australia-wide

Email **sales@bildspec.com.au**

Sydney / ACT

V5, 391 Park Road, Regents Park NSW 2143

Adelaide

3/55 Gawler Place, Adelaide SA 5000

Melbourne

4/83 Boundary Road, Carrum Downs VIC 3201

Brisbane/Gold Coast

29/97 Creek Street, Brisbane City QLD 4000

QBCC Lic: 15392521

Perth

202/37 Barrack Street, Perth WA 6000