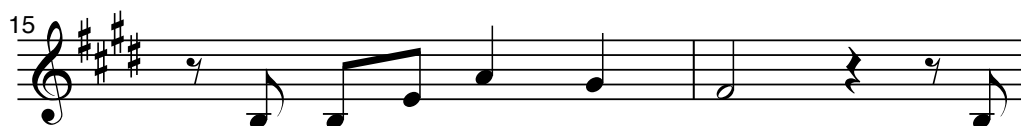


Older Simba - Callback Song 2 - Can You Feel The Love Tonight

**ENSEMBLE:**



Can you feel— the love— to-night,



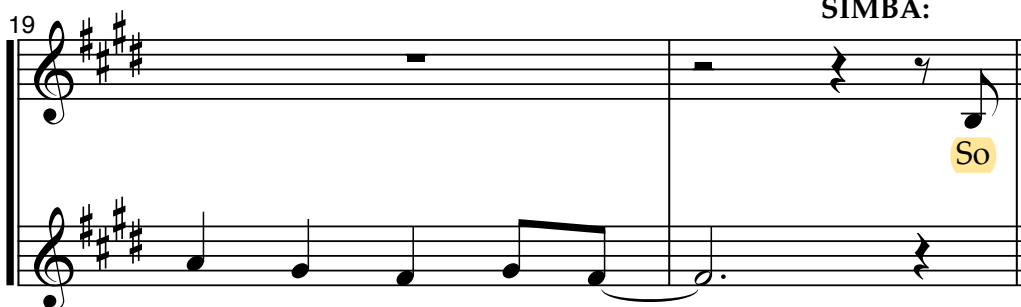
the peace the eve - 'ning brings? The



world, for once, in per - fect har-mo-ny with

*(SIMBA and NALA re-enter separately.)*

**SIMBA:**



So

all its liv - ing things.—



ma - ny things to tell— her, but

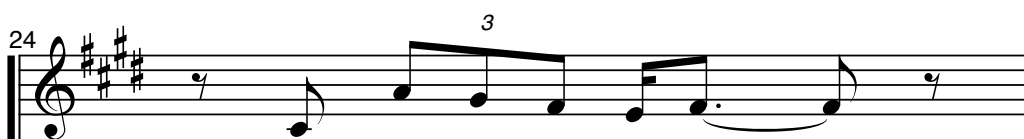


how to make her— see the

(SIMBA):

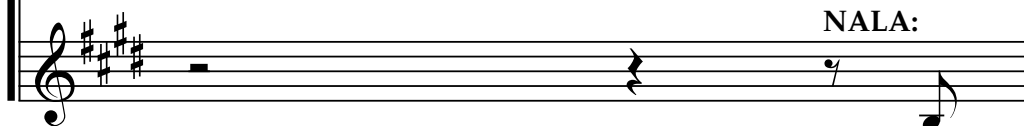


truth a - bout my past? Im-pos - si - ble.



She'd turn a - way from me.

NALA:



He's



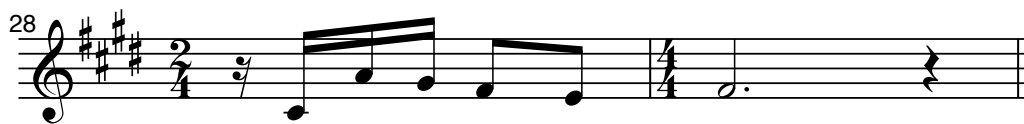
hold - ing back. He's hid - ing. But



what? I can't de - cide. Why



won't he be the king I know he is,




the king I see in - side?


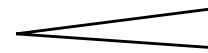
ENSEMBLE:




Can you feel the love to - night,

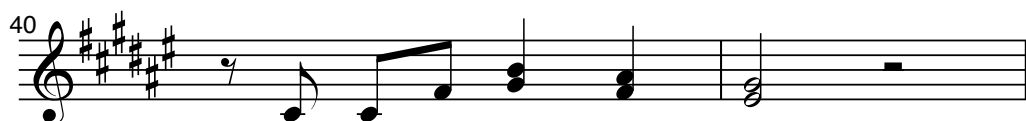
32  the peace the eve - 'ning brings? The

34  world, for once, in per - fect har-mo-ny with

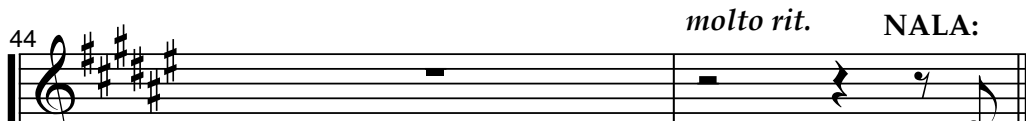

36  all its liv - ing things. 

*(From the Pridelands, RAFIKI enters and cups her ear to hear a far-off melody.)*

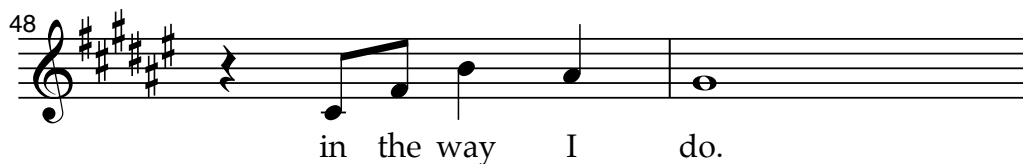
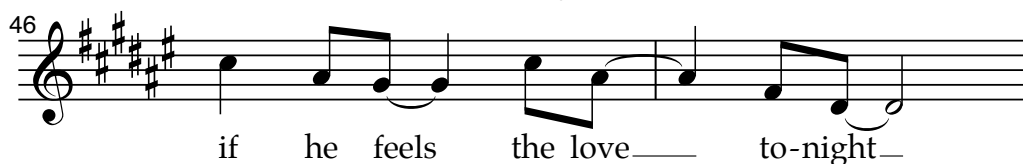
38  Can you feel— the love— to-night?

40  You need - n't look too far.

42  Steal-ing through the night's un - cer-tain-ties,

44  *molto rit.* NALA: And  
love is where we are! 

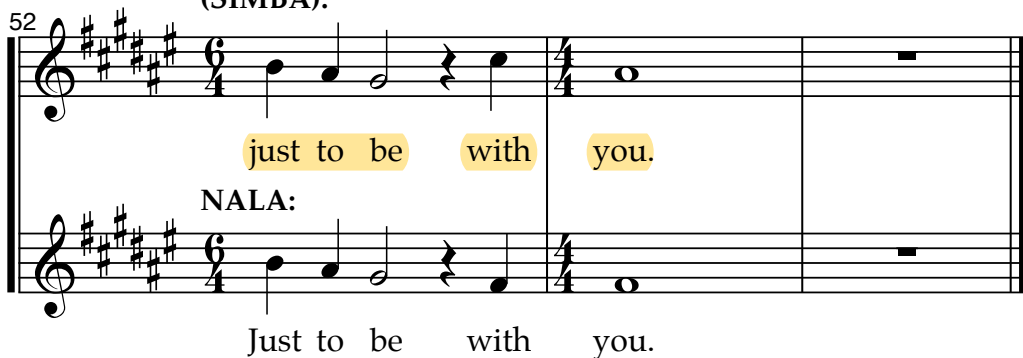
(NALA): Slowly



SIMBA:



(SIMBA):



(SIMBA and NALA hold paws. RAFIKI smiles and exits. SIMBA breaks away, energized.)

SIMBA

Isn't this a great place?

NALA

It is beautiful.

SIMBA

And there's lots more you haven't even seen yet.

NALA

Simba, I don't understand. You've been alive all this time. Why didn't you come back to Pride Rock?